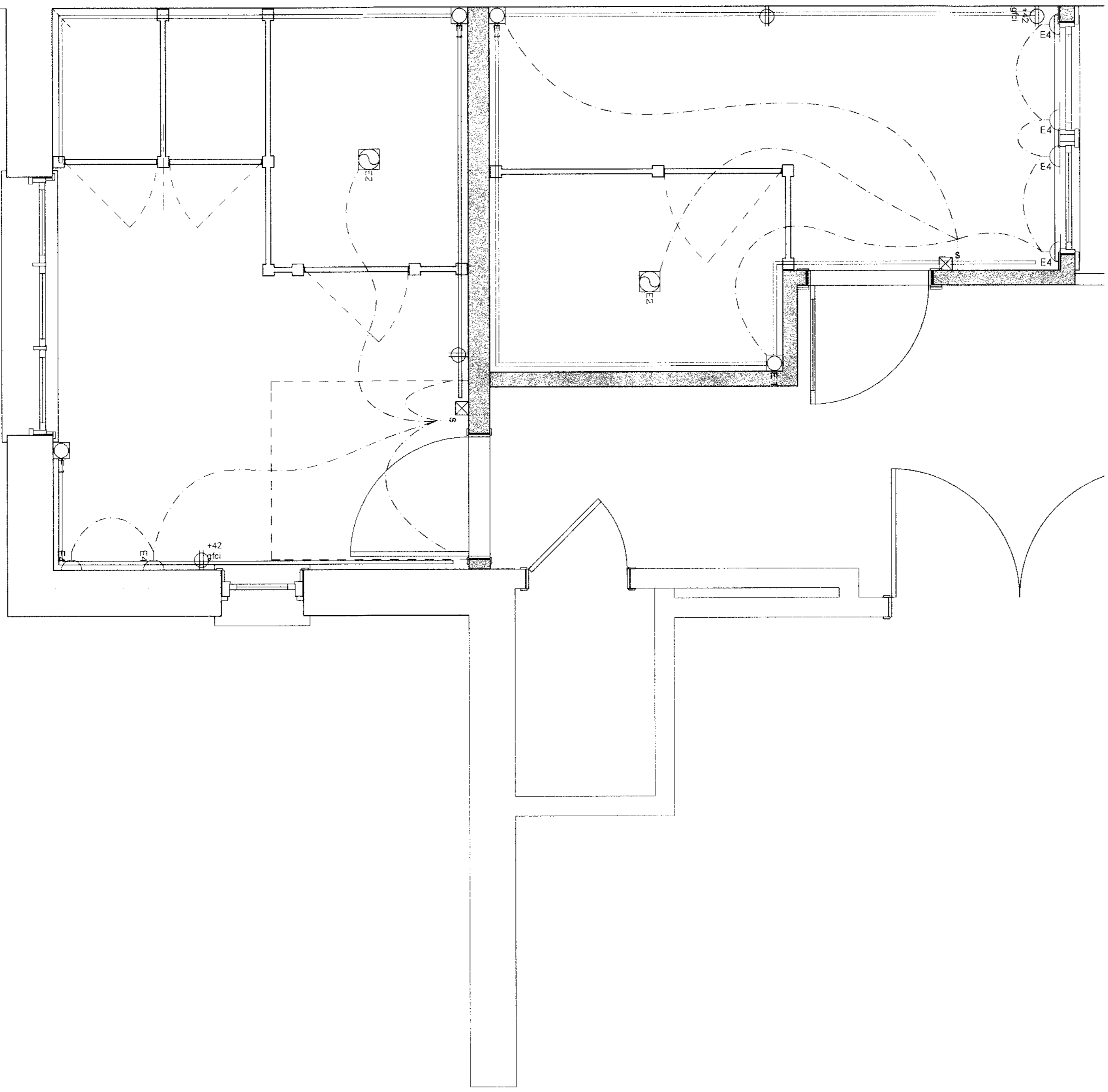


ROOM	MARK	FIXTURE	MANUFACTURER / MODEL	NOTES
MENS / WOMENS	E1	LED COVE LIGHTING	TMOU STRIP LIGHTING: (C/OBELUM LED: CUL-SF-2.5-WW-12)	SEE DETAIL:XXXXX FOR INSTALLATION TECHNIQUE
MENS / WOMENS	E2	EXHAUST FAN	PANASONIC WHISPER CEILING FV-30VQ3	TO BE WIRED W/ LIGHTING
MENS / WOMENS	E3	HEATING UNIT	BERKO FFA 4824 FAN FORCED WALL HEATER	VERIFY LOCATION W/ ARCHITECT PRIOR TO INSTALLATION
MENS / WOMENS	E4	VAULT WALL SOUNDC	RESTORATION HARDWARE SOUNDC (KELLER SOUNDC-POLISHED CHROME)	SEE INTERIOR ELEVATION FOR HEIGHT AND LOCATION OF SOUNDC

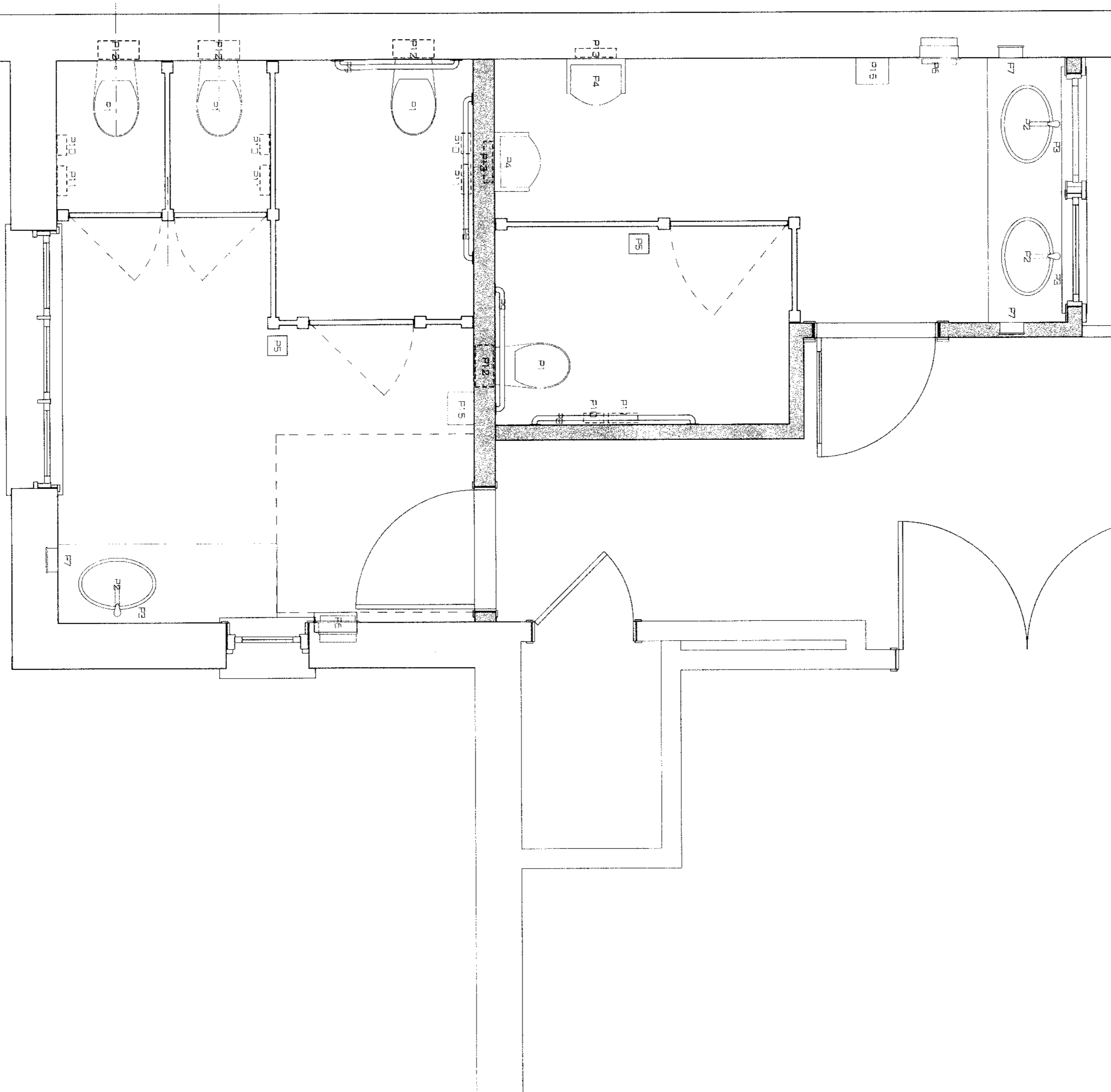
1. Lighting in bathrooms to provide a minimum of 20 foot candles in each

ROOM	MARK	FIXTURE	MANUFACTURER / MODEL	NOTES
MENS / WOMENS	P1	TOILET	Chamberlain toilet (018019) 001-1 White	Chamberlain toilet (00666) 1 White, SEE P. 1, 2 FOR FLUSH MECHANISM
MENS / WOMENS	P2	SINK	Chamberlain SINK (035245) 001-1 White	With OVERFLOW AND TRAP PLUMBING
MENS / WOMENS	P3	FAUCET	American Standard Electronic Precision Faucet (ELECTRONIC 657-22 W/ MIRROR VALVE)	SEE P. 1, 2 FOR FLUSH MECHANISM
MENS	P4	URINAL	Chamberlain (020444) 001-1	
MENS / WOMENS	P5	FLOOR DRAIN W/ SELF PRIMER	Emcock Contura Series Sumpco Mounted Floor Drain, Dispenser (WHITE) (062569)	
MENS / WOMENS	P6	TRASH / TOWEL DISPENSER	Emcock Contura Series Sumpco Mounted Soap Dispenser (062570)	
MENS / WOMENS	P7	SOAP DISPENSER	Emcock Contura Series Sumpco Mounted Soap Dispenser (062571)	
MENS / WOMENS	P8	GRAB BAR	Emcock Grab Bar 1-1/2" Dia. Stainless Steel 146" H (062572)	
MENS / WOMENS	P9	GRAB BAR	Emcock Contura Series Retracted Wall-Mounted Grab Bar (062573)	
MENS / WOMENS	P10	TOILET PAPER DISPENSER	Emcock Contura Series Retracted Wall-Mounted Toilet Paper Dispenser (062574)	
MENS / WOMENS	P11	SEAT COVER DISPENSER	Emcock Contura Series Retracted Wall-Mounted Seat Cover Dispenser (062575)	
MENS / WOMENS	P12	CONCEALED FLUSH TANK	Emcock Concealed Dual Flush Tank For Wall-Hung Toilets (111352) (015)	Emcock Flush Actuator (111352) (015)
MENS / WOMENS	P13	URINAL AUTO FLUSH SYSTEM	Slavin HyValve Electronic Urinal Flush Valve (EL-5) (100) (01)	
MENS / WOMENS	P14	RADIANT HEATING & FLOOR HAND DRYER	Typical Radiant System (referenced per floor plan)	Radiant floor system to be done per equipment system
MENS / WOMENS	P15	HAND DRYER	Emcock Contura Series (062576) (015)	

1. Contractors to include all parts & accessories and labor needed to provide a fully functional, complete unit, including but not limited to drains, drain stoppers and all other required parts.



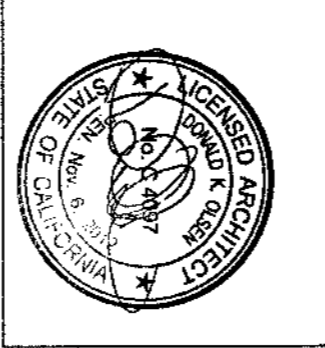
ELECTRICAL LAYOUT  
SCALE: 1/2" = 1'-0"



PLUMBING LAYOUT  
SCALE: 1/2" = 1'-0"

**D O N A L D O L S E N**  
ARCHITECTS & ASSOCIATES

666 BRIDGEWAY, SAUSALITO, CA 94965 TEL: 415/332-0297  
FAX: 415/332-8869 EMAIL: DON@DKOARCHITECTS.COM



**CITY HALL BATHROOMS**  
420 LITHO STREET  
SAUSALITO, CA 94965  
APN#: 064-165-12

**RECEIVED**  
MAR 31 2011  
CITY OF SAUSALITO  
COMMUNITY DEVELOPMENT

REVISIONS	NO.

**E/P1.0**

APRIL 01, 2011

THESE PLANS AND SPECIFICATIONS CONSTITUTE THE ORIGINAL WORK OF THE ARCHITECT AND MAY NOT BE REPRODUCED OR REISSUED IN PART OR IN WHOLE WITHOUT THE WRITTEN CONSENT OF THE ARCHITECT. © DON OLSEN A.I.A. & ASSOCIATES, INC.