

DEPARTMENT OF PUBLIC WORKS
 TREE MAINTENANCE ACTIVITIES PERFORMED AND PENDING
 JULY 2012

Page 1 of 3

<u>ADDRESS</u>	<u>TYPE OF TREE</u>	<u>DIAMETER</u>	<u>ALTERED (TRIM)</u>	<u>REMOVED</u>	<u>COMMENTS</u>
5 Miller Ave	Monterey Pine	54.4-in DBH (171-in CBH estimated)		Top removed, remainder pending PG&E strain guy relocation	Private – still requires PG&E coordination – no permit required (undesirable tree).
ROW at 254 Glen Drive	Pittosporum Quercus	37.7-in CBH	Decision: View Claims Valid 31JAN12 Decision appealed 9FEB12 23FEB12		TRP 11-174 (Pittosporum) & TRP 11-394 (Quercus) received. View claim found valid. Decision appealed. Appeal pending. Trimming postponed.
ROW – Intersection between Sausalito Blvd & Spencer Ave on 40 Cooper Lane	Black Acacia	72" DBH 78" DBH			Co-dominant trunks lean away from each other. 1 trunk leans over Spencer Ave; the other is a threat to property at Cooper Lane. Bartlett Tree exposed root collar, ivy & soil removed from bottom of tree to determine risk of failure. Two arborist reports, 1 from homeowner. Not a hazard. Pending.

DEPARTMENT OF PUBLIC WORKS
 TREE MAINTENANCE ACTIVITIES PERFORMED AND PENDING
 JULY 2012

Page 2 of 3

<u>ADDRESS</u>	<u>TYPE OF TREE</u>	<u>DIAMETER</u>	<u>ALTERED (TRIM)</u>	<u>REMOVED</u>	<u>COMMENTS</u>
ROW at 506 Olive Street	DEDICATED Monterey Pine (see Memorandum with 2FEB12 packet)		Completed 7-12-12		Arborist Report from Bartlett Tree. Dedicated tree dying from bark beetles. Possibility of root damage and/or soil compaction resulted from construction adjacent. Women's Club notified. Posted 1/24/12. Removal approved. Removed by Elite Tree Service.
ROW at 42 & 1/2 Caledonia	2) Indian Laurel Fig	CBH 8'5" (only one tree measured)		Pending	Large tear in main trunk where limb has failed. Pending removal by City following approval of replacement plan.
ROW at 53 Glen Drive	DEDICATED 1) Moraine Locust	21.6" CBH		Pending	Leaning stem over stairway entrance to residence. Four large limbs growing out of a central stump, needs risk reduction of leaning stem. Arborist report from Ed Gurka with corrective recommendations to prune then cable the

Tree Maintenance Activities July 18, 2012

DEPARTMENT OF PUBLIC WORKS
 TREE MAINTENANCE ACTIVITIES PERFORMED AND PENDING
 JULY 2012

Page 3 of 3

<u>ADDRESS</u>	<u>TYPE OF TREE</u>	<u>DIAMETER</u>	<u>ALTERED (TRIM)</u>	<u>REMOVED</u>	<u>COMMENTS</u>
ROW at 49 Glen Drive (Rose Ct)	3) Pine (variety pending)		Pending		leaning stem to tree's other stems to increase stability. Two proposals rec'd for install of cabling and pruning. Low is \$1980 Significant lifting of curb section, branches straining telecommunications cables (see picture). Arborist report pending.
ROW at 1001 Bridgeway	1) Myoporum		Completed 6-1-12		Emergency removal. Trunk of tree had a 4" split. Removed by city crew. Stump needs to be ground with cement repair to follow. No arborist report.
ROW at 115 Harrison Ave	1) Live Oak		Pending		Seasonal pruning. Tree posted 7/17/12. Arborist report.

October 16, 2011

ASSIGNMENT:

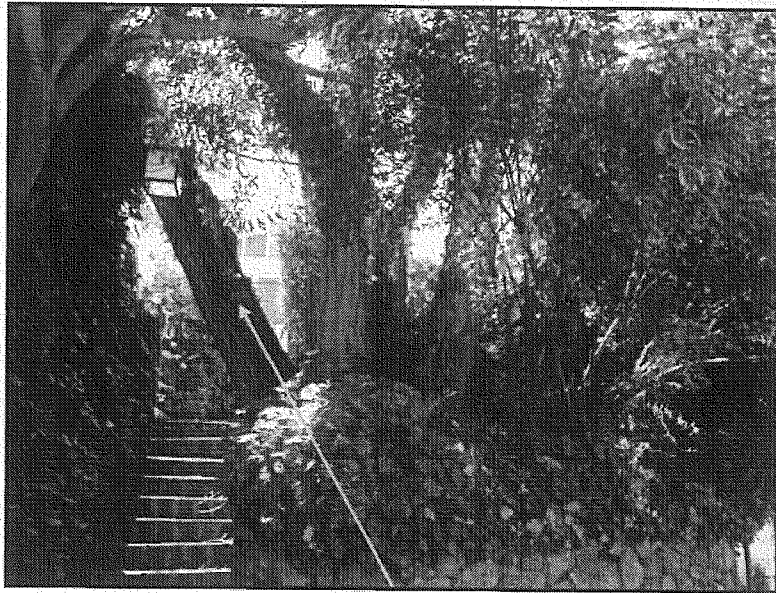
I received a request from Mary Casey to provide information on a Locust tree located just above the stairway entrance to her home at 53 Glen Drive, Sausalito, CA. One of the main limbs is over the stairway and appears to have moved lower over the stairway. This report will provide information on the arboricultural method of compensating for the movement.

OBSERVATIONS and DISCUSSIONS:

I met with Mrs. Casey at 53 Glen Drive on October 7, 2011, to collect information and assess the tree's condition. The tree is described as a *Gleditsia tricanthos*, Moraine Locust, of special significance because it is a thornless and fruitless variety of the Locust family. The tree tolerates a wide variety of soils, temperatures, is wind resistant, and relatively pest and disease free. The tree's canopy structure is four stems with a Circumference at Breast Height, (CBH) of 5.1, 5.9, 5.2 and 5.5 feet. The combined CBH is 21.6 feet. This tree is designated as a "Dedicated Tree" of special significance by the Sausalito Women's Club and Sausalito City Council, Ordinance 1114, 11.12.020 **DEFINITIONS, Dedicated Tree:** A tree that has special significance as provided for by resolution of the City Council.

The limb with a 5.5-foot CBH that extends over the stairway to 53 Glen Drive is leaning at a 28 degree angle. In comparison, the other limbs are leaning at a 10 degree angle. *Gleditsia* trees have a spreading canopy structure, and therefore, a slight lean is expected.

The limb with the 28 degree lean is partially obstructing passage along the stairway leading to and from the residence. A visual inspection of the stem did not reveal open decay cavities. A basic sounding test was performed to a section of the limb to determine if internal decay could contribute to the lean. Hollow tones were noted at breast height levels, and internal wood decay is suspected on the stem area approximately 4.5 feet above the stem's base. Based on the sounding tests the decay area does not appear to be extensive or consume a great deal of trunk area. Sounding tests were performed only to the lower portion of the leaning stem.



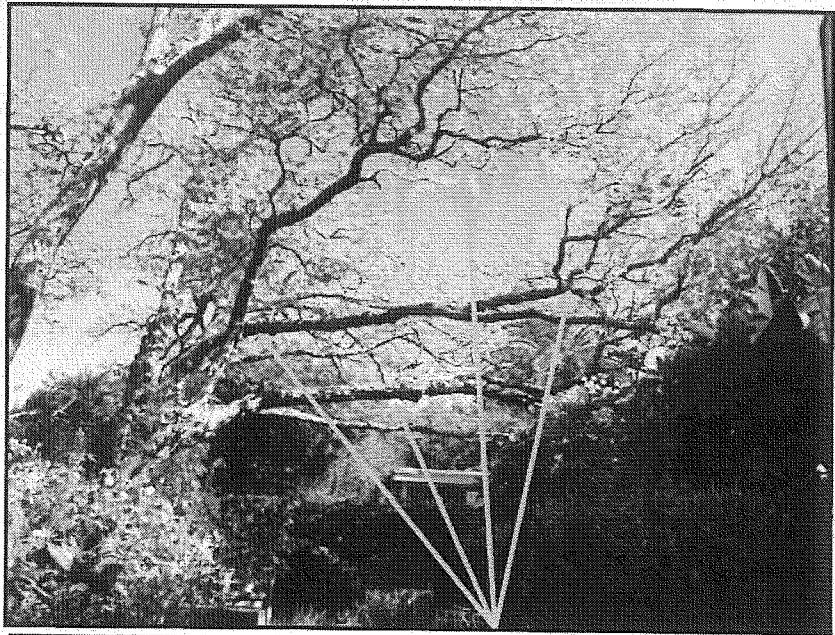
Locust tree with leaning stem over stairway 53 Glen Drive.

RECOMMENDATIONS:

This Locust tree provides considerable benefits to the property. They are privacy, shading, and a wind break for the front yard. Its attributes are foliage that is light green in the summer and turning yellow in the fall. This mature Locust species has special attributes that were considerations for a "Dedicated Tree" status by special proclamation of the Sausalito City Council. Therefore the focus and appropriate action are for risk reduction of the leaning stem. Corrective measures are possible for its management as opposed to a removal. They are as follows:

To reduce excessive leveraged weight on the leaning stem of the Locust tree, pruning operation shall be performed before cabling installation. Work shall be completed by workers skilled and knowledgeable in pruning weight reduction, and cabling methods.

- A reduction of over-extended scaffold limbs requires end reduction pruning cuts to reduce the excessive leverage at limb attachment points and weight reduction on the leaning main stem. Scaffold limbs shall be reduced selectively by 25 percent where possible and cuts made to side branches that can assume future growth.
- Where similar diameter scaffold limbs are extending distally and in parallel to one another the redundant limb shall be considered for removal. The remaining scaffold limbs shall be pruned for end reduction. These two requirements are recommended to reduce weight on the leaning stem.
- The removal of any dead limbs greater than 1 inch shall be performed to the entire Locust tree canopy.
- *ANSI A-300 (Part 1) – for Tree Care Operations – Tree, Shrub and Other Woody Plant Management – Standard Practices (Pruning) and the Best Management Practices Tree Pruning, the companion publication shall be used as requirements and guidelines for the pruning operation.*



Selective end weight reduction of scaffold limbs. The removals of parallel scaffolds are considered pruning objectives to reduce excessive weight on the leaning Locust tree limb.

- To brace and anchor the leaning limb following the pruning operation, cabling the leaning stem to the tree's other stems is recommended to increase stability of the leaning stem. The ANSI A-300 for Tree Care Operations, –Tree, Shrub, and Other Woody Plant Maintenance, Standard Practices, (*Support Systems a*.

Cabling, Bracing, and Guying) are recommended for this cabling and bracing operation. Page 24, a. Direct, Direct cabling consisting of a single cable between two trees parts, e.g. two stems, is the section of the publication that applies for the work.

SUMMARY:

Based on the recommended pruning and cabling standards discussed in this report, the result will be improved conditions of the leaning stem over the walkway to the 53 Glen Drive residence. The recommendations presented in this report are intended to preserve this "Dedicated Tree" designated by the Sausalito City Council. In addition to the recommended work of pruning and cabling, monitoring the tree by a Certified Arborist is necessary to document progress and the effect of the recommended work to the Locust tree. Annual inspection is recommended, and if warranted, the time span of inspection can be increased if the tree is stable.

Contact Information:

Ed Gurka
Independent Services
197 Coleman Drive
San Rafael, CA. 94901
Mobile: 415 601-5337
Email: Edgurka1@aol.com

Affiliations and Licenses:

International Society of Arboriculture, Certified Arborist # 418, 1984 to present.
American Society of Consulting Arborists, Member, 2000 to present.
California Department of Pesticide Regulation, Pest Control Advisor PCA 74846, 1989 to present.
City of Sausalito, Municipal Arborist, 1989-2004
Independent Consulting Arborist Services, 2004-present

49 Glen Drive
Google Street View

