

**ADDENDUM 1**  
**Sausalito Library Renovation Project**  
**420 Litho St.**  
**Sausalito, CA 94965**  
**August 23, 2012**

**THE FOLLOWING ITEMS REPRESENT Addendum NO. 1**

The purpose of this addendum to the current Bid package for the above-referenced project is to provide clarifications, additions, deletions, changes, and / or revisions to the package per the attached documents and sheets.

The Drawings of this Addendum (if any) primarily relate to required documentation for the clarification of scope. General revisions / supplemental information are also included in this Amendment.

**CONTRACTING REQUIREMENTS**

**Bid Due Date:**

- 1) **Section 0100 – Advertisement to Bid - Bid Due Date has been changed. Original Bid Due Date was August 28<sup>th</sup>, 2012. New Bid Date will be August 30<sup>th</sup>, 2012**

**Contract Specifications:**

- 1) **Section 00400 – Bid Form has been changed. Contractor will include as part of Section 00400 Bid Form the Breakdown of Costs Table for scopes of work associated with Bid. Table is included in this addendum. Cost Breakdown will as accurately as possible state costs associated with the various scopes of work.**
- 2) **Section 00400 – Bid Form has been changed. Title of Section modified to accurately reflect Section and Title of Section**
- 3) **Section 00411 – Bond Accompanying Bid – Title of Section and Number has been changed to accurately reflect that it is Section 00411 and that title is Bond Accompanying Bid.**
- 4) **Section 00420 - Bidder Registration and Safety Experience Form has been deleted from Project Manual**
- 5) **Section 00460 - SCHEDULE OF MAJOR EQUIPMENT AND MATERIAL SUPPLIERS has been deleted from Project Manual**
- 6) **Specification has been added for ceiling tiles in Staff Office, specification attached to this addendum.**
- 7) **Specification has been added for sink and fixtures in Staff Office, specification attached to this addendum.**
- 8) **Specification has been added for Door Hardware, specification attached to this addendum.**
- 9) **Specification has been added for under cabinet lighting, specification added to this addendum.**
- 10) **Specified electrical floor boxes shall be installed with standard metal duplex boxes.**

**Contract Drawings:**

- 1) Revised Contract Drawings are attached. Changes have been clouded.
- 2) Sheet A2.0 – Scope Added – Contractor shall include demolition and removal of all built in cabinetry and casework in Office (Staff Office). All contents of cabinets will be removed by DPW. All remaining cabinetry and casework shall be demolished and removed by Contractor.
- 3) Sheet A2.0 – Scope Clarification – At Reading Area 2 and Computer Area, Accessible Station and Accessible Tables are not responsibility of Contractor.
- 4) Sheet A2.0 – Scope Clarification – Installation of Rough Plumbing. If top of page is North, then currently existing on the north wall of the Staff Office is a sink with hot and cold water supply. The rough plumbing will be relocated from the north wall to the East Wall.
- 5) Sheet A2.0 – Change of Scope – In Staff Room, Contractor Shall include in Bid Price New Sink and Fixtures per Specification added to this addendum.
- 6) Sheet A2.0 – Change of Scope – Door and Hardware schedule has been updated to include hardware specification.
- 7) Sheet A3.0 – Storefront – Storefront system shall be Anodized Bronze finish.
- 8) Sheet A3.1 – Change to Scope – Sheet A3.1 has been added to Contractors Scope of Work. Contractor shall include in Bid Price cost to install Casework in Staff Office.

**Questions:**

- 1) **Question: Does Electrical panel have enough space to install new breaker for new circuits? Answer: City does not have this information. Contractor to field verify electrical panel and determine if panel is sufficient or has capacity to add circuits.**
- 2) **Question: What kind of conduits are required to run electrical and data wiring? Answer: Electrical conduits will be required to meet code requirements. Data may be hung without conduit.**
- 3) **Question: Where do we run data to? Answer: Server Room is located at 3<sup>rd</sup> floor, SW corner of building. Existing cabling may be relocated as possible, or new cabling shall be run to Server Room. Cabling does not need to be in conduit, though shall be hung with existing cabling so as to not impede bandwidth (i.e. no staples to be used to attach cabling to structure. Data will need to be tested to ensure bandwidth is not impeded.)**

-End of Addendum #1

**SECTION 00400**  
**Bid Form**

To be submitted **as part of bid** by the time and date specified in Section 00200 (Instructions to Bidders), paragraph 1.

TO THE CITY COUNCIL OF THE CITY OF SAUSALITO

THIS BID IS SUBMITTED BY:

\_\_\_\_\_  
(Firm/Company Name)

RE: CITY HALL LIBRARY RENOVATION PROJECT

1. The undersigned Bidder proposes and agrees, if this Bid is accepted, to enter into an agreement with the City of Sausalito ("City of Sausalito") in the form included in the Contract Documents, Section 00520 (Agreement), to perform and furnish all Work as specified or indicated in the Contract Documents for the Contract Sum and within the Contract Time indicated in this Bid and in accordance with all other terms and conditions of the Contract Documents.

2. Bidder accepts all of the terms and conditions of the Contract Documents, Section 00100 (Advertisement for Bids), and Section 00200 (Instructions to Bidders), including, without limitation, those dealing with the disposition of Bid Security. This Bid will remain subject to acceptance for 60 Days after the day of Bid opening.

3. In submitting this Bid, Bidder represents:

(a) Bidder has examined all of the Contract Documents and the following Addenda (receipt of all of which is hereby acknowledged).

Addendum No.	Addendum Date	Signature of Bidder

(b) Bidder has visited the Site and performed tasks, reviews, examinations, and analysis and given notices, regarding the Project and the Site, as set forth in Section 00520 (Agreement), Article 5.

Bidder has given City of Sausalito prompt written notice of all conflicts, errors, ambiguities, or discrepancies that it has discovered in or among the Contract Documents and as-built **drawings** and actual conditions and the written resolution thereof through Addenda issued by City of Sausalito is acceptable to Contractor.

4. Based on the foregoing, Bidder proposes and agrees to fully perform the Work within the time stated and in strict accordance with the Contract Documents for the following sums of money listed in the following Schedule of Bid Prices:

SCHEDULE OF BID PRICES

All Bid items must be filled in completely. Section 01100 (Summary of Work) describes the scope of work to be performed under this contract. Quote in figures only, unless words are specifically requested.

ITEM	DESCRIPTION	BID PRICE
1	All Work	\$
		\$

Total Bid Price: \_\_\_\_\_  
(Words)

5. The low bidder will be determined by the sum of base bid.
6. Bidder shall include Bid Breakdown Table as part of the Bid Form.
6. The undersigned Bidder understands that City of Sausalito reserves the right to reject this Bid.
7. If written notice of the acceptance of this Bid, hereinafter referred to as Notice of Award, is mailed or delivered to the undersigned Bidder within the time described in paragraph 2 of this Section 00400 or at any other time thereafter before it is withdrawn, the undersigned Bidder will execute and deliver the documents required by Section 00200 (Instructions to Bidders) within the times specified therein. These documents include, but are not limited to, Section 00520 (Agreement), Section 00610 (Construction Performance Bond), and Section 00620 (Construction Labor and Material Payment Bond).
8. Notice of Award or request for additional information may be addressed to the undersigned Bidder at the address set forth below.
9. The undersigned Bidder herewith encloses cash, a cashier's check, or certified check of or on a responsible bank in the United States, or a corporate surety bond furnished by a surety authorized to do a surety business in the State of California, in form specified in Section 00200 (Instructions to Bidders), in the amount of ten percent (10%) of the total of Bid and made payable to "City of Sausalito".
10. The undersigned Bidder agrees to commence Work under the Contract Documents on the date established in Section 00700 (General Conditions) and to complete all work within the time specified in Section 00520 (Agreement). The undersigned Bidder acknowledges that City of Sausalito has reserved the right to delay or modify the commencement date. The undersigned Bidder further acknowledges City of Sausalito has reserved the right to perform independent work at the Site, the extent of such work may not be determined until after the opening of the Bids, and that the undersigned Bidder will be required to cooperate with such other work in accordance with the requirements of the Contract Documents.

11. The undersigned Bidder agrees that, in accordance with Section 00700 (General Conditions), liquidated damages for failure to complete all Work in the Contract within the time specified shall be as set forth in Section 00520 (Agreement).

12. The names of all persons interested in the foregoing Bid as principals are:  
(IMPORTANT NOTICE: If Bidder or other interested person is a corporation, give the legal name of corporation, state where incorporated, and names of president and secretary thereof; if a partnership, give name of the firm and names of all individual co-partners composing the firm; if Bidder or other interested person is an individual, give first and last names in full).

NAME OF BIDDER: \_\_\_\_\_  
licensed in accordance with the act for the registration of Contractors, and with  
License Number: \_\_\_\_\_  
Expiration: \_\_\_\_\_

Where incorporated  
(if applicable): \_\_\_\_\_

Principals \_\_\_\_\_

I certify (or declare) under penalty of perjury under the laws of the State of California that the foregoing is true and correct.

Signature of Bidder: \_\_\_\_\_

NOTE: If Bidder is a corporation, set forth the legal name of the corporation together with the signature of the officer or officers authorized to sign contracts on behalf of the corporation. If Bidder is a partnership, set forth the name of the firm together with the signature of the partner or partners authorized to sign contracts on behalf of the partnership.

Business Address: \_\_\_\_\_  
\_\_\_\_\_  
\_\_\_\_\_

Officers authorized to sign contracts: \_\_\_\_\_  
\_\_\_\_\_  
\_\_\_\_\_

Telephone Number(s): \_\_\_\_\_

Fax Number(s): \_\_\_\_\_  
\_\_\_\_\_

E-Mail address: \_\_\_\_\_

Federal ID Number:

---

Date of Bid:

---

END OF SECTION

SECTION 00411  
Bond Accompanying Bid

KNOW ALL BY THESE PRESENTS:

That the undersigned [ \_\_\_\_\_ ] as Principal and the undersigned as Surety are held and firmly bound unto the THE CITY OF SAUSALITO ("City of Sausalito"), as obligee, in the penal sum of [ \_\_\_\_\_ ] Dollars [(\$ \_\_\_\_\_)] lawful money of the United States of America being at least ten percent (10%) of the aggregate amount of said Principal [ \_\_\_\_\_ ]'s base Bid plus accepted Alternates, for the payment of which, well and truly to be made, we bind ourselves, our successors, executors, administrators, and assigns, jointly and severally, firmly by these presents.

WHEREAS, the said Principal is submitting a Bid for City of Sausalito CITY HALL LIBRARY RENOVATION PROJECT.

THE CONDITION OF THIS OBLIGATION IS SUCH that if the Bid submitted by the said Principal be accepted and the Contract be awarded to said Principal and said Principal shall within the required periods enter into the Contract so awarded and provide the required Construction Performance Bond, Construction Labor and Material Payment Bond, insurance certificates, and all other endorsements, forms, and documents required under Section 00200 (Instructions to Bidders), then this obligation for the Bid Bond shall be void, otherwise to remain in full force and effect.

IN WITNESS WHEREOF, the above bounden parties have executed this instrument this [ \_\_\_\_\_ ] day of [ \_\_\_\_\_ ], 2011.

(Corporate Seal)

By

Principal

Surety

(Corporate Seal)

By

Attorney in Fact

END OF SECTION





# Sausalito Library Renovation

Cost Breakdown to be attached to Bid Form 00400

Carpentry	
Doors and Windows	
Interior Casework	
Storefront	
Paint	
Electrical	
HVAC	

### FEATURES

#### Model LK406GN05L2

- Two hole dual handle top mount faucet
- Quarter turn ceramic disc cartridge
- Solid brass construction
- Chrome finish
- 2.2 GPM VR aerator with 1.5 and .5 GPM inserts
- Includes spout swing restriction pin

#### Model LK406GN05T4

- Same as LK406GN05L2 except with 4" wrist blades handles

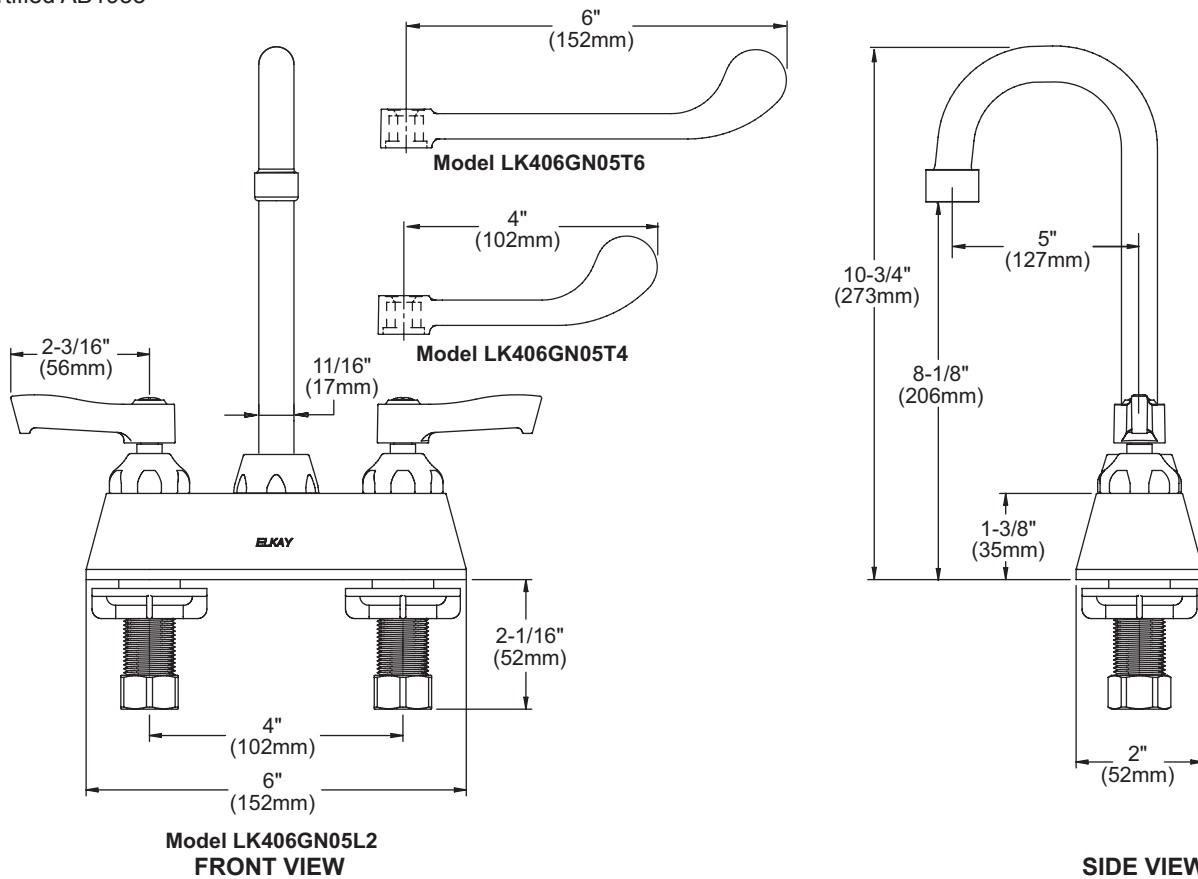
#### Model LK406GN05T6

- Same as LK406GN05L2 except with 6" wrist blades handles

### COMPLIES WITH:

- ASME/ANSI A112.18.1
- CSA B125-01
- NSF/ANSI 61 Annex G
- ADA
- UPC/CUPC
- IAPMO Listed
- Certified AB1953

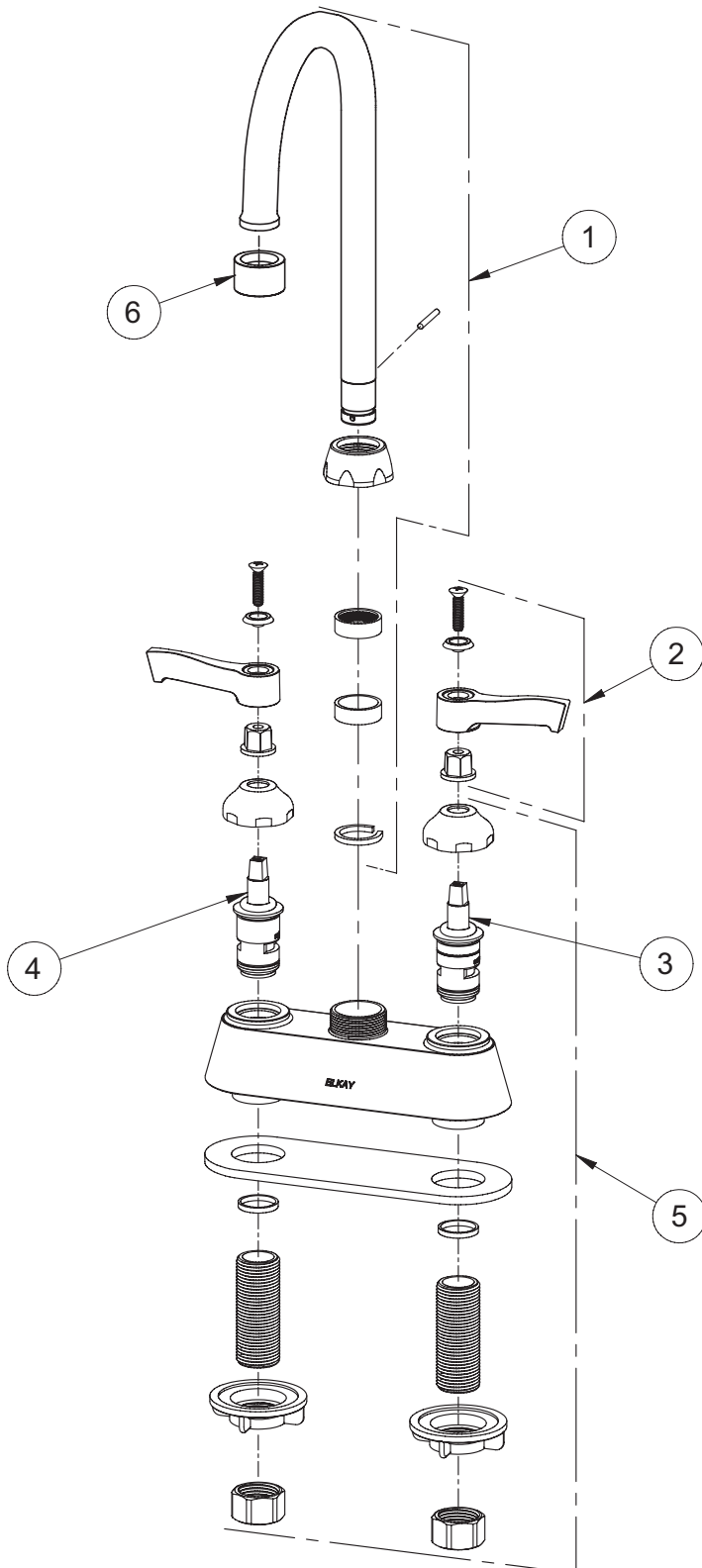
## Deck Mount 4" Center Commercial Faucet Models LK406GN05L2, LK406GN05T4, LK406GN05T6



Job Name:	Item #:
Notes:	
Architect/Engineer Approval:	Date:

SEE OTHER SIDE FOR REPLACEMENT PARTS

**Deck Mount 4" Center Commercial Faucet  
Models LK406GN05L2, LK406GN05T4, LK406GN05T6**



ITEM	IND. PART	DESCRIPTION
1	A55401	Spout
2	45918C	Handle, 2"
2	45919C	Handle, 4"
2	45920C	Handle, 6"
3	45923C	Right Cold Cartridge
4	45924C	Left Hot Cartridge
5	45917C	Body
6	LK734	2.2 GPM VR Aerator

---

## Amerock BP52992

### 3-3/4" Center Contemporary / Modern Bar Cabinet Pull

- Center to Center: 3-3/4"
- Length: 4-1/5"
- Width: 4/7"
- Projection: 1"

#### Specification

Collection	Allison Value Hardware
CTC (inches)	3.78
Length (inches)	4.2
Finish	Satin Nickel
Width Inches	0.58
Width (mm)	14.732
Projection (mm)	25.4
SKU#	BP52992G10



## Schlage AL50PD-619 Satin Nickel Office Lock Neptune Handle

Certification: ANSI A156.2-2003, Series 4000, Grade 2 Lock

Latch: 1-1/8" x 2 1/4", Square corner faceplate, 7/8" housing diameter, 1/2" throw

Strike: 1 1/8" x 2 3/4", Square corner, T-strike, box

Cylinder: 6-Pin solid brass, keyed 6-pin, Standard C-keyway or C-123 keyway

Door range: 1-3/8" – 1-7/8"

Two nickel silver cut keys per lock



# ELKAY<sup>®</sup>

## SPECIFICATIONS

### Gourmet™ Sink and Sink Packages

#### GENERAL

Highest quality sink formed of #18 (1.2mm) gauge, type 304 (18-8) nickel bearing stainless steel. Top mount.

#### DESIGN FEATURES

Bowl Depths: 6-1/8" (156mm) (BLR[Q]1560), 7-1/8" (181mm) (all others).

Coved Corners: 1-3/4" (44mm) vertical and horizontal radius.

Bowl and Faucet Deck Recess: 3/16" (5mm) below outside edge of sink.

Finish: Exposed surfaces are hand blended to a lustrous satin finish.

Underside: Fully undercoated to dampen sound and reduce condensation.

These sinks comply with ASME A112.19.3-2008/CSA B45.4-08.



These sinks are listed by the International Association of Plumbing and Mechanical Officials as meeting the requirements of the Uniform Plumbing Code.

#### SINK PACKAGES

**BLH15C** Package includes:

- (1) **BLR15** Sink.
- (1) **LKDA2438** Faucet.
- (1) **LK36** Basket strainer.

**BLR150C** Package includes:

- (1) **BLR15** Sink.
- (1) **LKD2223** Faucet.
- (1) **LK36** Basket strainer.

#### OTHER

Drain Openings: 3-1/2" (89mm) (BLR[Q]1516), 2" (51mm) (all others).

NOTE: Unless otherwise specified, sink is furnished with 1 faucet hole as shown.

#### OPTIONAL ACCESSORIES

Bottom Grid: LKWBG12090SS (BLH15C, BLR150C, BLR[Q]15, BLR[Q]1560).

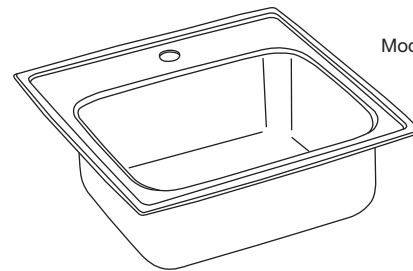
Cutting Board: CB912.

Drains: LK36 (BLH15C, BLR150C, BLR[Q]15, BLR[Q]1560), LK99 (BLR[Q]1516).

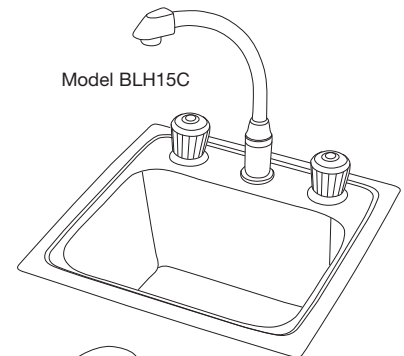
Installation hardware for thicker countertops: LK363 (up to 1-1/2" [38mm] thick); LK463 (up to 2-1/2" [66mm] thick).

Rinsing Basket: LKWRB1209SS.

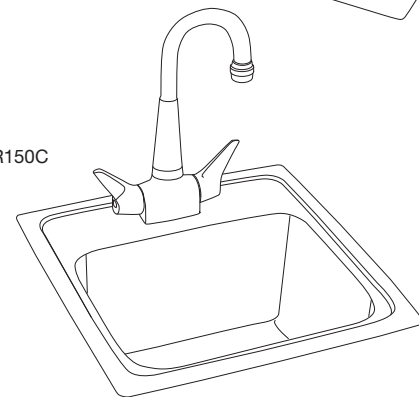
Utensil Caddy for Rinsing Basket: LKWUCSS.



Model BLR(Q)151



Model BLH15C



Model BLR150C

SEE OTHER SIDE FOR PRODUCT DIMENSIONS.

In keeping with our policy of continuing product improvement, Elkay reserves the right to change product specifications without notice. Please visit [elkayusa.com](http://elkayusa.com) for most current version of Elkay product specification sheets.

This specification describes an Elkay product with design, quality and functional benefits to the user. When making a comparison of other producers' offerings, be certain these features are not overlooked.

**Elkay**

[elkayusa.com](http://elkayusa.com)

2222 Camden Court  
Oak Brook, IL 60523

Printed in U.S.A.  
©2008 Elkay

(Rev. 12/08) 1-3E

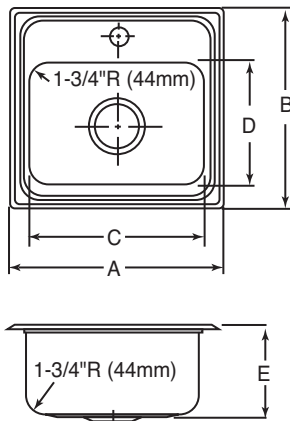
# Gourmet™ Sink and Sink Packages

# ELKAY® SPECIFICATIONS

## SINK DIMENSIONS\*

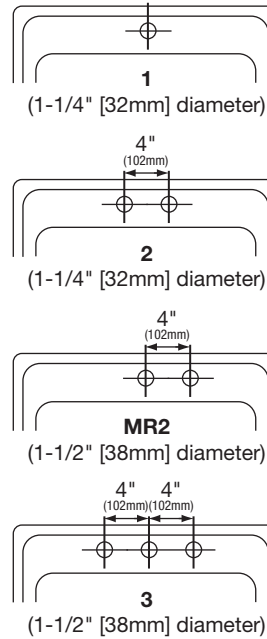
U-Channel Model Number	Quick-Clip® Model Number	Overall		Inside Bowl			Cutout in Countertop (1½" [38mm] Radius Corners)		Drain Opening	No. of 1¼" (32mm) or 1½" (38mm) Dia. Faucet Holes 4" (102mm) Centers	Minimum Cabinet Size
		L	W	L	W	D	L	W			
		A	B	C	D	E	L	W			
BLH15C	-	15 (381mm)	15 (381mm)	12 (305mm)	9¼ (235mm)	7⅞ (181mm)	14⅜ (365mm)	14⅜ (365mm)	2 (51mm)	3	18 (457mm)
BLR150C	-	15 (381mm)	15 (381mm)	12 (305mm)	9¼ (235mm)	7⅞ (181mm)	14⅜ (365mm)	14⅜ (365mm)	2 (51mm)	1	18 (457mm)
BLR15	BLRQ15	15 (381mm)	15 (381mm)	12 (305mm)	9¼ (235mm)	7⅞ (181mm)	14⅜ (365mm)	14⅜ (365mm)	2 (51mm)	1, 2, MR2 or 3	18 (457mm)
BLR1516	BLRQ1516	15 (381mm)	15 (381mm)	12 (305mm)	9¼ (235mm)	7⅞ (181mm)	14⅜ (365mm)	14⅜ (365mm)	3½ (89mm)	1, 2, MR2 or 3	18 (457mm)
BLR1560	BLRQ1560	15 (381mm)	15 (381mm)	12 (305mm)	9¼ (235mm)	6⅞ (156mm)	14⅜ (365mm)	14⅜ (365mm)	2 (51mm)	1, 2, MR2 or 3	18 (457mm)

\*Length is left to right. Width is front to back.

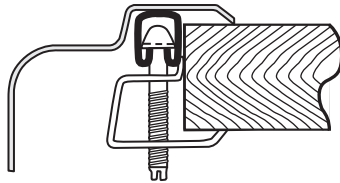


Model BLR151 Illustrated

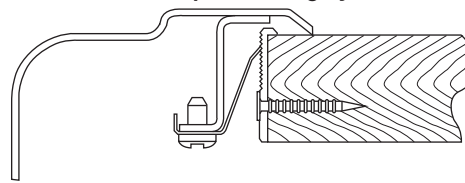
### HOLE DRILLING CONFIGURATIONS



### U-Channel Type Mounting System



### Quick-Clip® Mounting System





# UNDERCABINET LIGHTING

## PRO-SERIES FLUORESCENT

8W, 14W, 21W & 28W

T5 HE Fluorescent Lamps

## UPF12, UPF22, UPF34 and UPF46

Project: \_\_\_\_\_

Fixture Type: \_\_\_\_\_

Location: \_\_\_\_\_

Contact/Phone: \_\_\_\_\_

### PRODUCT DESCRIPTION

Pro-Series Fluorescent modular series luminaires offer highly efficient illumination in a shallow, easy-to-conceal profile. Ideal for undercabinet, undershelf, and task lighting, where maximum energy efficiency, long lamp life, and cool operation are desired. Pro-Series Fluorescent fixtures are optimized for fast permanent installation, mounting either flush to the rear backsplash or to the front lip of cabinetry to suit project conditions and homeowner preference.

### PRODUCT SPECIFICATIONS

**Lamp** Latest generation of high-efficiency (HE), high color rendering 3000K T5 tri-phosphor fluorescent lamps • 10,000 hour rated lamp life.

**Ballast** State of the art 120V electronic ballast instantly starts lamp and operates without flicker or hum.

**Housing** Extruded aluminum • Black, brushed bronze, brushed silver or designer white finish.

**Switch** Convenient on/off rocker switch.

**Diffuser** Extruded non-yellowing clear UV/impact resistant acrylic lens.

**Labels** UL/C-UL Listed.

### INSTALLATION

UPF series fixtures optimized with a center rear wiring access compartment and push-in 3-wire electrical connectors for quick electrical connection without having to open the fixture. Rear wiring access compartment covers provided with push-in connector for non-metallic cable and knockout for feed thru wiring capability. Multiple knockouts provided. Die-cast fitting for 3/8" flexible metal conduit supplied in a hardware pack. Fixtures may be mounted flush to the backsplash or up against the front lip of the cabinetry using captive external mounting screws.

**Portable** To install as a portable fixture, use the 3-wire grounded cord & plug (ULH-CP sold separately).

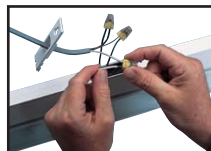
**Optional Direct Wire** Optional direct wire module (ULH-DWM sold separately) facilitates code-compliant installation of fixture at front edge of cabinetry. Supplied with 36" field-shortenable jumper cord to bring power to either end of the fixture.

**Electrically Connecting Multiple Fixtures** Up to 10 fixtures may be electrically joined together using either the straight joiner connector supplied with each fixture or the optional JC3 jumper cords. See accessories table for lengths and finishes.

### PRO-SERIES FLUORESCENT 5 MINUTE DIRECT-WIRE INSTALLATION



**Step 1** Attach supply wires to rear access cover.

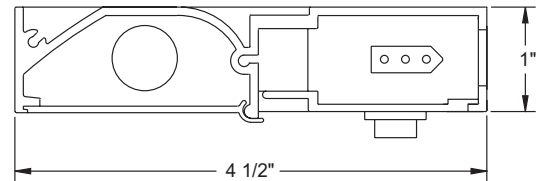


**Step 2** Connect supply wires to fixture leads using push-in connectors.



**Step 3** Mount fixture to cabinet bottom using captive mounting screws.

### DIMENSIONS



### ENGINEERING DATA (120V)

	UPF12	UPF22	UPF34	UPF46
Total input power (watts)	8.4	15.3	22.1	30.3
Total Operating AMPS	.13	.23	.32	.45
Power Factor	.52	.53	.57	.56

### PRODUCT CODES

Catalog Number	Finish	Overall Length	Lamp
UPF12-BL	Black	12 7/16"	8W T5
UPF12-BZ	Brushed Bronze	12 7/16"	8W T5
UPF12-SL	Brushed Silver	12 7/16"	8W T5
UPF12-WH	Designer White	12 7/16"	8W T5
UPF22-BL	Black	22 3/4"	14W T5 HE
UPF22-BZ	Brushed Bronze	22 3/4"	14W T5 HE
UPF22-SL	Brushed Silver	22 3/4"	14W T5 HE
UPF22-WH	Designer White	22 3/4"	14W T5 HE
UPF34-BL	Black	34 1/2"	21W T5 HE
UPF34-BZ	Brushed Bronze	34 1/2"	21W T5 HE
UPF34-SL	Brushed Silver	34 1/2"	21W T5 HE
UPF34-WH	Designer White	34 1/2"	21W T5 HE
UPF46-BL	Black	46 5/16"	28W T5 HE
UPF46-SL	Brushed Silver	46 5/16"	28W T5 HE
UPF46-WH	Designer White	46 5/16"	28W T5 HE

### MAXIMUM ENERGY EFFICIENCY:

8 watts = 40 watts halogen

14 watts = 75 watts halogen

21 watts = 100 watts halogen

28 watts = 150 watts halogen



# UNDERCABINET LIGHTING

PRO-SERIES FLUORESCENT

8W, 14W, 21W & 28W

T5 HE Fluorescent Lamps

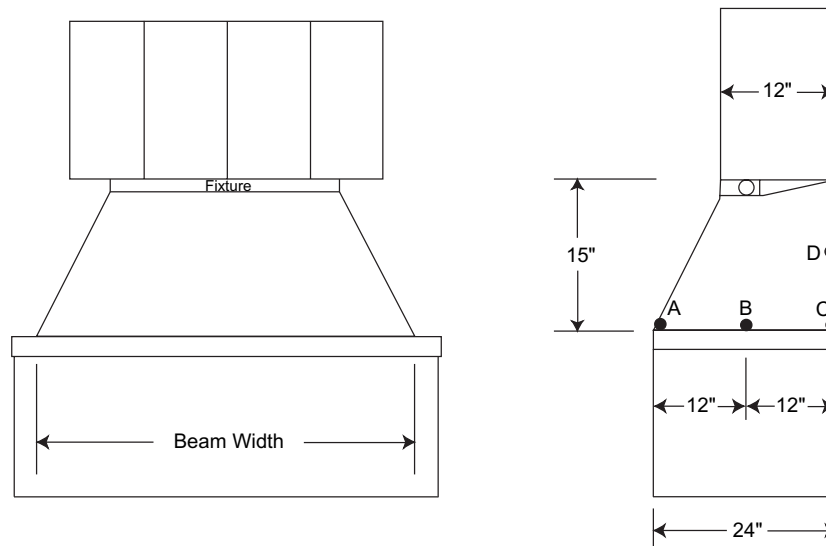
**UPF12, UPF22, UPF34 and UPF46**

## ACCESSORIES

Catalog No.	Description
JC3-8-WH,-BL	8" Jumper Cord
JC3-17-WH,-BL	17" Jumper Cord
JC3-26-WH,-BL	26" Jumper Cord
ULH-CONN	3/8" Miniature Die-Cast Electrical Connector
ULH-CP-WH,-BL	3-Wire Grounded Cord & Plug
ULH-DWM-WH,-BL	Direct Wire Module

## LIGHTING APPLICATION DATA

### FOOTCANDLES ON HORIZONTAL WORK SURFACE



Cat #	Lamp	* Beam Width	Footcandles			
			A	B	C	D
UPF12	8-watt T5	21"	22	64	34	39
UPF22	14-watt T5 HE	27"	37	105	59	65
UPF34	21-watt T5 HE	34"	47	126	75	73
UPF46	28-watt T5 HE	43"	61	162	100	96

\*Beam width defined as 50% of maximum footcandles

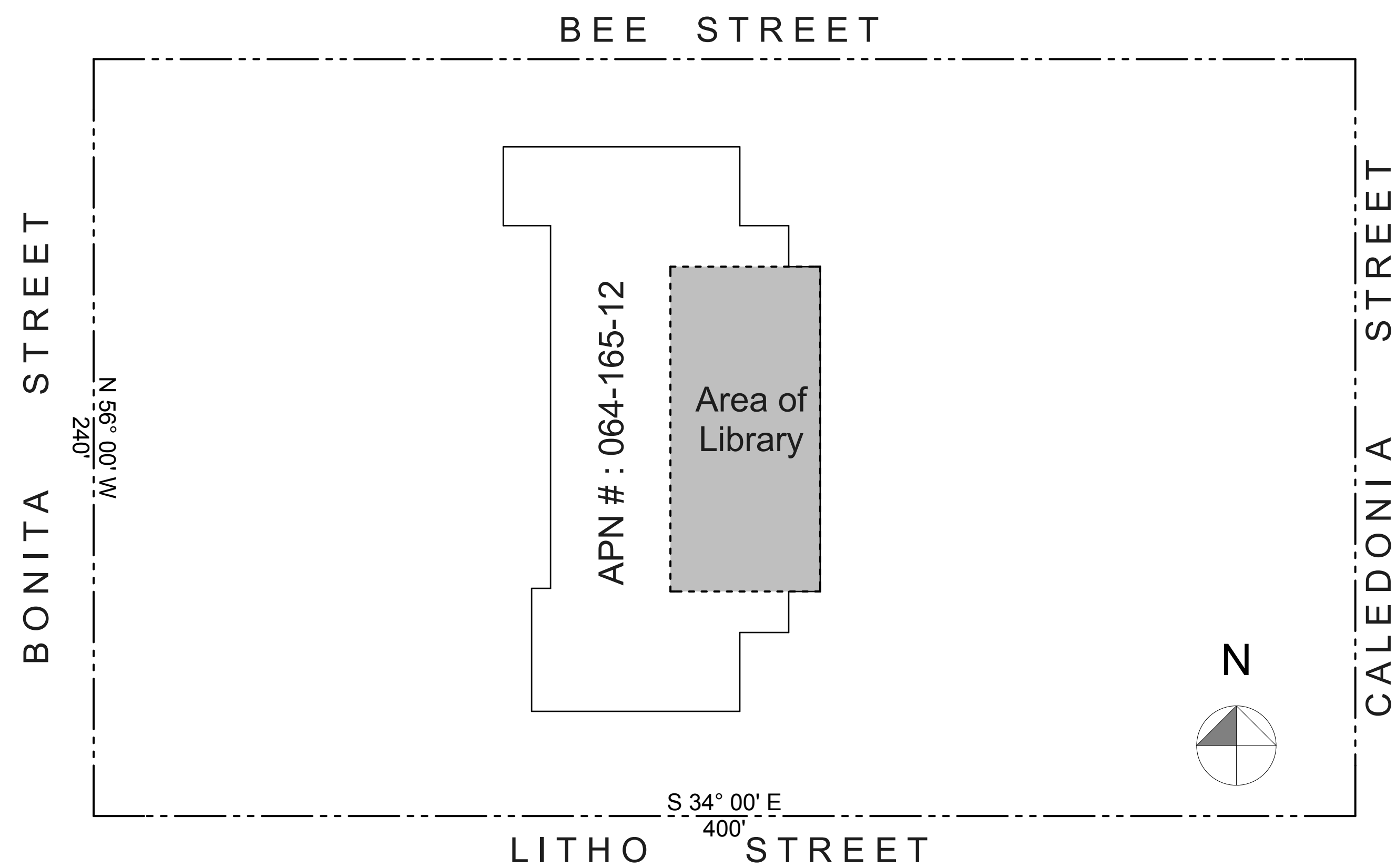
Rear wall reflectance 50%  
Counter Surface Reflectance 20%

8 watts equivalent to 40 watts of halogen  
14 watts equivalent to 75 watts of halogen  
21 watts equivalent to 100 watts of halogen  
28 watts equivalent to 150 watts of halogen



1300 S. Wolf Road • Des Plaines, IL 60018 • Phone (847) 827-9880 • Fax (847) 827-2925  
220 Chrysler Drive • Brampton, Ontario • Canada L6S 6B6 • Phone (905) 792-7335 • Fax (905) 792-0064  
Visit us at [www.junolightinggroup.com](http://www.junolightinggroup.com)

Printed in U.S.A. ©2012 Juno Lighting, LLC.



1 Site Plan  
SCALE: 1/32" = 1'-0"

**OWNER**

City of Sausalito 420 Litho Street  
Sausalito, CA 94965

**CONSULTANTS**

ARCHITECT: John McCoy, AIA  
McCoy Architecture, Inc  
1417 Bridgeway, Suite 2  
Sausalito, CA 94965  
415.332.9910

Furniture Designer: Garen McDonald  
Ross McDonald Company  
1154 Stealth Street  
Livermore, CA 94551  
925.455.1635  
fax: 925.373.1227

**PROJECT INFORMATION**

DESCRIPTION: Interior Remodel to Library. Separate Children's Area from the Main Library. Remodel of the library staff office and reconfigure location of data outlets and electrical receptacle in the main library.

A.P.N. 064-165-12

ZONING PI

OCCUPANCY A-3

CONSTRUCTION TYPE 5A

PARCEL SIZE 96,000 sq. ft.

SETBACKS rear NA  
right NA  
left NA

HEIGHT Existing interior

IMPERVIOUS SURFACE Existing NA  
Addition NA  
TOTAL NA

LOT COVERAGE Existing NA  
Addition NA  
TOTAL NA

FLOOR AREA Existing 3,250 sq. ft. of existing library

FIRE SPRINKLERS Existing system to be retained.

**SHEET INDEX**

- A0 Cover Sheet, Site Plan, Conditions of Approval, Sheet Index, Vicinity
- A1.0 General Notes
- A2.0 Floor Plan
- A3.0 Elevations & Sections
- A3.1 Cabinet Elevations & Section
- A4.0 Electrical & Mechanical Plan
- A5.0 Construction Details and ADA Details

BID SET ONLY  
NOT FOR CONSTRUCTION

**REVISIONS**

07-30-2012
08-22-2012

**PLUMBING / MECHANICAL / ELECTRICAL NOTES**

1. FIXTURE LOCATIONS: Confirm location of all fixtures and outlets with architect.
2. PLUMBING VENTS: All new plumbing vents shall terminate not less than 3'-0" from any property line. Vents must also terminate at least 4' below, 1' above, and 4' horizontally from any door or operable window or air inlet.
3. RELIEF VALVE: Provide water heater pressure/temperature relief valve with drain to outside of building or other approved location. CPC 608  
No part of drain may be installed where it would be subject to freezing. CPC 608.5
4. BACKFLOW PREVENTION: Provide a non-removable backflow prevention device on all exterior hose bibbs and lawn sprinkler/irrigation systems. CPC 603.4
5. METAL WATER PIPING and other interior metal piping shall be bonded to the service equipment enclosure pursuant to CEC 250-80 (a) & (b). The points of attachments to the bonding jumper shall be accessible.
6. SEISMIC ANCHORAGE: Provide seismic anchorage for new and/or existing water heater tanks with straps within the upper and lower one-third of unit, with lower strap at least 4" above controls. CPC 510.5
7. TERMINATION of all environmental air ducts shall be a minimum of 3'-0" from any opening into the building. Exhaust air vent to have back draft damper.
8. GROUNDING ELECTRODE SYSTEM: Electrician shall provide and locate the grounding electrode system conforming to CEC 250-81.
9. SMOKE DETECTORS: Smoke detectors shall be powered by building wiring with battery back-up. Provide smoke detectors in the following areas (as applicable):  
at each story and basement; within each bedroom and centrally located in the corridor or area giving access to each sleeping area; in each room where non-bedroom ceiling heights exceed the hall ceiling height by more than 2'.
10. KITCHEN CIRCUIT: Provide at least two separate 20 amp circuits for small appliances in kitchen, pantry, dining room and similar areas, with no other outlets on the circuits. CEC 210-11 (c)(1), 210-52(b)
11. CLOTHES CLOSET LAMPS shall be enclosed if incandescent type. Light fixture clearances shall conform to CEC 410-8.
12. KITCHEN LIGHTING - at least 50% of the installed wattage shall be high efficacy (fluorescent) and switched separately from the low efficacy lighting.  
The following table defines high efficacy lighting (2008 CA Title 24 Section 150):
13. GARAGE, LAUNDRY & UTILITY ROOM LIGHTING - same requirements as bathrooms.
14. RECESSED LIGHTING FIXTURES shall be rated as air-tight (AT) and, when installed in an insulated ceiling shall have an approved zero clearance insulation cover (IC). (2008 CA Title 24 Section 150)
15. OUTDOOR LIGHTING (attached to the building) - shall be high efficacy (fluorescent) OR controlled by a motion sensor with an integral photocontrol (2008 CA Title 24 Section 150). Metal Halide is also a high efficacy option.
16. OUTLETS: In every habitable room an electrical outlet shall be installed so that no point along the floor line in a wall space is more than six feet measured horizontally, from any outlet in that space, including any wall space two feet or more in width, the wall space occupied by fixed panels in exterior walls, and fixed room dividers. NEC Article 210-52.
17. NEW OUTLETS (including receptacles, switches, lighting, and hard-wired smoke detectors) in must be on circuits protected with a combination arc-fault breaker. (2007 CEC 210.12)
18. RECEPTACLES installed in the following locations must be GFCI protected: exterior, garage, bathrooms, and above the kitchen countertop. (2007 CEC 210.12).
19. LOAD CALCULATIONS: Contractor to submit electrical load calculations for the sizing of the electrical panels to the building department for approval prior to installation.

**DEMOLITION NOTES**

1. Contractor shall carefully check the stability of all elements of the building before doing any work on or demolition to the existing structure. The contractor shall brace or strengthen any portions of the structure that may be weakened by demolition or construction activities. The contractor shall be solely responsible for jobsite safety and preservation of existing construction not slated for demolition.
2. All demolition and removal work shall conform to all applicable codes and regulations, including U.B.C, Chapter 44 and A.N.S.I. A10.6-1983 "Safety Requirements for Demolition". The Contractor shall bear sole responsibility for identifying, testing and disposing of any hazardous materials encountered in the demolition process in accordance with all applicable codes, ordinances and regulations.
3. Contractor shall verify with owner or architect any item to be salvaged and reused. Damage to any such item will be the sole responsibility of the contractor.
4. Removal of wall finishes, floor finishes, and ceiling finishes shall include all material down to framing, exterior sheathing or subfloor.

**DUST MITIGATION PLAN**

1. The Contractor shall submit a satisfactory construction dust mitigation plan to the City. This plan shall specify the methods of control that will be utilized, demonstrate the availability of needed equipment and personnel, and identify a responsible individual who can modify construction activities should complaints be received by the City.
2. The construction dust mitigation plan shall, at a minimum, include the following:  
A. HIGH WINDS: Suspension of earthmoving or other dust-producing activities during periods of high winds when dust control measures are unable to avoid visible dust plumes.  
B. DUST PLUMES: Provide equipment and staffing for watering of all portions of the site subject to vehicle or equipment travel or disturbance. An appropriate dust palliative or suppressant, added to water before application would vary according to the moisture level of the soils on the site, but should be frequent enough to avoid visible dust plumes.  
C. STOCKPILES: Water or cover stockpiles of debris, soil, sand or other materials that can be blown by the wind.  
D. SWEEP STREETS DAILY: of all mud and debris carried out from the site onto the adjacent road, since this material can be pulverized and later resuspended by vehicle traffic.  
E. ALL MATERIALS TRANSPORTED BY TRUCK shall be covered or wetted down prior to exiting the site.  
F. FINAL GRADES shall be treated with an appropriate dust suppressant, covered or seeded as early as practical.

**CONSTRUCTION MANAGEMENT PLAN**

1. JOB SIGN: A sign shall be placed at the jobsite to notify the residence of the prime contractor and major subcontractor and related phone numbers.
2. CONSTRUCTION MANAGEMENT COORDINATOR: The name and phone number of a Construction Management Coordinator shall be posted at the site and shall be available to respond to complaints and questions from area residents.
3. HOURS OF OPERATION: Work at the site shall be limited to the hours of 8:00 AM to 7:00 PM, Mondays through Fridays, and 9:00 AM through 4:00 PM on Saturdays. No work shall be permitted on Sundays and Holidays without prior approval from the Community Development Agency.
4. CONSTRUCTION VEHICLES: All material deliveries and removal from the construction site shall follow a route, both to and from the site, agreed upon by the Community Development Agency and the Construction Management Coordinator. It is the Contractor's responsibility to see that these locations and routes are adhered to.
5. TRAFFIC MANAGEMENT: Vehicular traffic shall not be delayed for more than 5 minutes for more than four consecutive days. Access for emergency vehicles shall be maintained at all times (minimum 12'-0" in width). Traffic management measures shall include the following:  
A. Traffic control measures such as flag persons, signage, etc. shall be utilized to ensure that vehicular traffic and pedestrian movement will continue to occur safely during construction periods.  
B. In the event of additional construction is occurring on the street it is the responsibility of both/all Contractors to coordinate all construction activities to avoid conflict in deliveries and/or construction activities. Coordination shall be made with the notification of the Public Works Department.

**GENERAL NOTES**

1. RULES & REGULATIONS: All work shall conform to the 2010 editions of the California Building Code (CBC), 2010 California Plumbing and Mechanical Codes, 2010 California Energy and 2010 Electrical Codes, complete with all applicable State of California amendments, codes and regulations for each edition including State of California title 24 & a.b. 163 regulations and City of Sausalito Security Ordinance, and City of Sausalito Fire District Ordinance.
2. CONTRACTOR Shall be responsible for construction in conformance with the approved plans, specifications, and all code requirements under which the plans and specifications were approved.
3. MEASUREMENTS: Do not scale drawings. Contractor shall verify all dimensions shown on the drawings, any discrepancy shall be reported to the Architect prior to commencement of related work.
4. EXISTING CONDITIONS: It is the contractor's responsibility to verify all applicable existing conditions, including but not limited to water damage, termite damage, dry-rot, of any other framing or structural issues that may vary from those shown on the drawings, and report any discrepancies to the Architect prior to commencement of related work.
5. SURVEY: Contractor shall have a licensed land surveyor stake the perimeter and/or corners of the building prior to the commencement of work and shall report any discrepancies to the Architect.
6. DRAIN PIPE: Provide a 4 inch perforated pipe (holes down) behind every retaining wall and perimeter footing set in drain rock. Provide clean-outs at dead ends and at turns greater than 45 degrees.
7. TREATED LUMBER: All wood, including posts, within 6 inches of the ground shall be pressure treated or foundation-grade redwood.
8. PRESSURE TREATED: Any area framed with pressure treated material, the connection hardware must be hot-dipped zinc-coated. Fasteners in preservative treated wood must be approved silicon bronze, or copper, stainless steel or hot-dipped zinc-coated steel. This includes the foundation plates.
9. CUT OR NOTCHED WOOD: Any cut or notched wood shall be sealed with epoxy sealer.
10. SOLES AND PLATES: Where plumbing, heating or other pipes are placed in or partially placed in a partition, necessitating the cutting of soles or plates, a metal tie not less than 16 gage galvanized and 1 1/2" wide shall be fastened to each plate across and to each side of the opening with not less than six 16d nails.
11. FIRE BLOCKING: Provide fire blocking at ceilings, floors, furred down ceilings, showers, soffits, and at concealed draft openings not to exceed 10' maximum. CBC 708
12. TYPE "X" GYPSUM: Type "X" gypsum board is to be used at all walls and soffits of enclosed usable space under stairs.
13. INSULATION: Provide minimum R-13 insulation in all new walls and R-30 insulation in all new roofs.
14. METAL FLASHING shall be copper, unless otherwise noted.
15. VAPOR BARRIER shall be roll-on urethane membrane by Division7 (or approved equal).
16. VENT STRIP at roof-edge venting shall be Cor-a-vent RS-400, or equal.
17. INSECT SCREEN: All insect screen at eave vents shall be corrosion resistant metal mesh with mesh openings 1/4" in dimension, unless otherwise noted.
18. PAINTING: Provide 1 coat primer and 2 finish coats of paint at all interior and exterior surfaces.
19. SMOKE DETECTORS: Smoke detectors shall be powered by building wiring with battery back-up. Provide smoke detectors in the following areas (as applicable):  
- at each story and basement.  
- within each bedroom and centrally located in the corridor or area giving access to each sleeping area  
- in each room where non-bedroom ceiling heights exceed the hall ceiling height by more than 2'.
20. CARBON MONOXIDE alarms are to be installed outside each bedroom per CRC 315.2
21. GLASS: All glass shall conform with human impact and safety requirements as per CBC. 2406

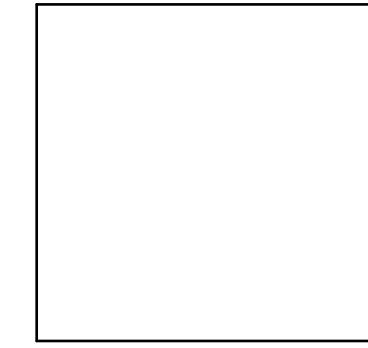
BID SET ONLY  
NOT FOR CONSTRUCTION

**CITY OF SAUSALITO REGULATIONS**

1. DEBRIS BOX SERVICE: All debris box service must be by Bay City Refuse.
2. ENCROACHMENT PERMITS: Contractor shall be responsible for any necessary encroachment permits for all work in the public right-of-way such as construction staging, temporary power, porta potty, debris box, termination of site drainage into City curb and gutter, sewer work, trenching, installation of underground utilities (electric, gas, water, etc.) per SMC 8.04.090. Contact City Engineering Division at 415-289-4112 for details.
3. INSPECTIONS: All inspections agencies and/or individuals and shop fabricators shall be approved by the Building Department prior to the work being preformed. Submit all documentation for approval.
4. SUPPLIES & STORAGE: All work and storage of material to be located on private property. Loading and unloading of supplies to take place on driveway apron. At no time will any vehicle be located on the public road way.
5. REVISIONS: Any revision(s) to the approved plan set shall be submitted to the Sausalito Community Development Department for review. Inspections for revised work shall not be requested until the revision is approved by the Sausalito Community Development Department. Allow a minimum of 2 weeks for the Sausalito Community Development Department review.



REMODEL TO THE  
SAUSALITO LIBRARY  
420 LITHO STREET, SAUSALITO CA 94965  
A.P.N. 064-165-12

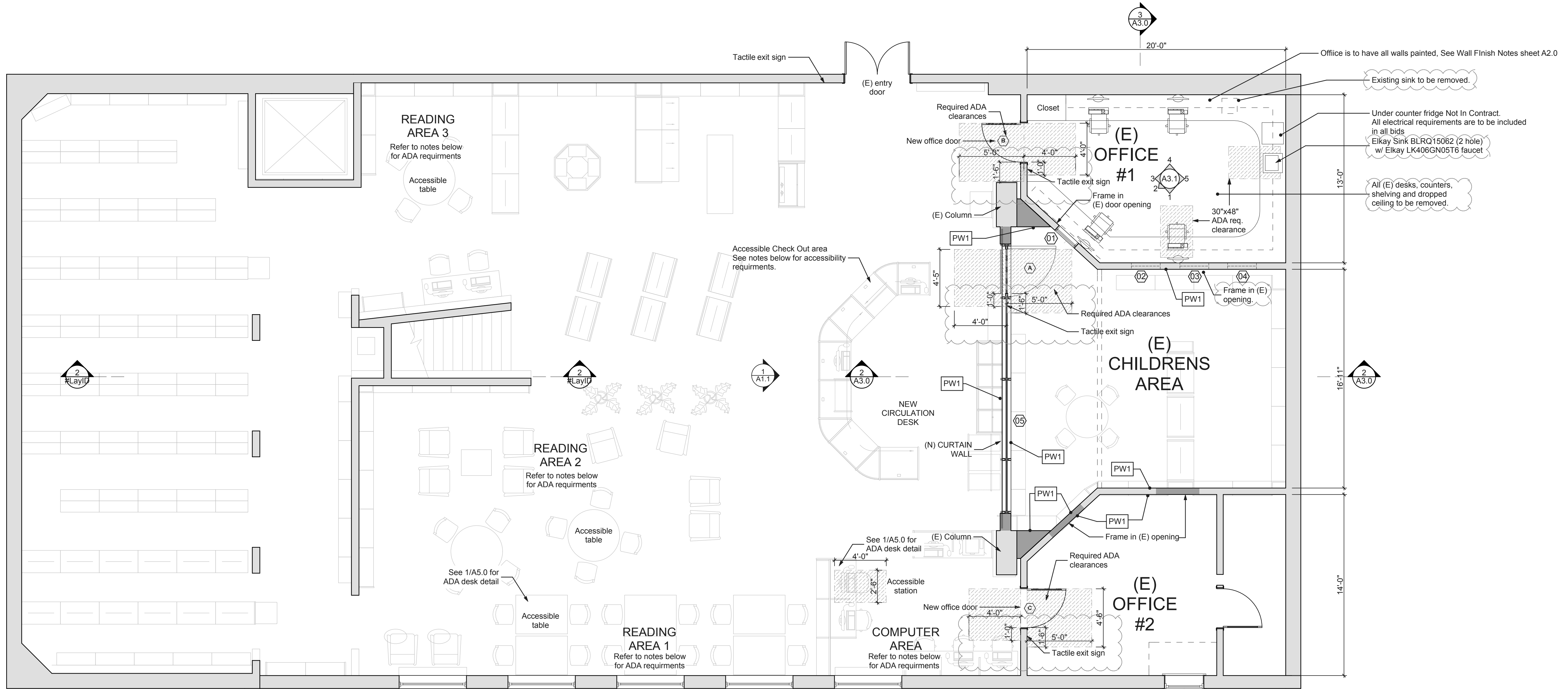


**REVISIONS**

07-30-2012
08-22-2012

**A1.0**

08-22-2012



**1 Floor Plan**  
 SCALE: 1/4" = 1'-0"

**Accessibility Notes: 1106B.4 Library general use areas.**

**1. General.** Library general use areas such as those housing card files, book stacks, periodicals, reading and study areas, reference areas, information desks, circulation counters, reserve areas, special facilities or collections, etc., shall be made accessible to persons with disabilities.

**2. Open book stacks.** Open book stacks (those available for customer use) shall be on an accessible route complying with Section 1114B.1.2, may be of normal height, and shall have main aisles no less than 44 inches (1118 mm) in clear width and side, range and end aisles no less than 36 inches (914 mm) in clear width. In existing buildings, multiterred, closed book stacks (those restricted to employee use) are exempt from these accessibility standards.

**3. Height of book shelves.** Unless an attendant is available to assist persons with disabilities, all book shelving shall be located not more than 54 inches (1372 mm) above the floor.

**4. Card catalogs and magazine displays.** Minimum clear aisle space and maximum reach heights at card catalogs and magazine displays shall comply with Section 1118B, with a height of 48 inches (1219 mm) preferred irrespective of reach allowed.

**5. Reading and study areas.** At least 5 percent or a minimum of one of each element of fixed seating, tables, study carrels, computers or similar workstations shall be on an accessible route complying with Section 1114B.1.2, and shall comply with Section 1118B, "Space Allowance and Reach Ranges", Section 1122B, "Fixed or Built-in Seating, Tables, and Counters" and Section 1133B.6 "Aisles".

**6. Check-out areas.** At least one lane at each check-out area shall be on an accessible route complying with Section 1114B.1.2, and shall have a portion of the counter which is at least 36 inches (914 mm) in length with a maximum height of 34 inches (864 mm) above the finish floor with a 36 inch (914 mm) wide aisle on the customer side.

MARK	SIZE (W x H)	OPERATION	GLAZING	Manufacturer Unit	NOTES
(01)	2'-0" x 2'-0"	fixed	Dual glazed	BLOMBER 880 SERIES	Fixed unit. Trim to match existing
(02)	2'-0" x 2'-0"	fixed	Dual glazed	BLOMBER 880 SERIES	Fixed unit. Trim to match existing
(03)	2'-0" x 2'-0"	fixed	Dual glazed	BLOMBER 880 SERIES	Fixed unit. Trim to match existing
(04)	2'-0" x 2'-0"	fixed	Dual glazed	BLOMBER 880 SERIES	Fixed unit. Trim to match existing
(05)	20'-10" x 15'-0"	Store front system	Dual glazed Tempered	CW-250 OLD CASTLE Storefront system	Anodized bronze finish
(A)	Sized to fit store front	Hinged	Dual glazed Tempered	CW-250 OLD CASTLE Storefront system	To be integral w/ storefront
(B)	3'-0" x 8'-0"	Hinged	Dual glazed Tempered	STEELCRAFT "L" Series	See sheet A3.0 for configuration
(C)	3'-0" x 8'-0"	Hinged	Dual glazed Tempered	STEELCRAFT "L" Series	See sheet A3.0 for configuration

**WINDOW & DOOR NOTES**

1. Contractor to verify all R.O. with manufacturer prior to ordering.

2. All glass doors shall have tempered safety glazing.

3. All glass shall conform with human impact and safety requirements as per 2010 CBC Section 2406.

4. All accessible doors shall be equipped with accessible hardware mounted between 34" & 48". This hardware shall allow the door to be operated with a maximum of 5 foot pounds of force.

5. Maximum threshold height is 1/2".

6. Required ADA clearances @ all doors is conform with 2010 CBC Accessibility requirements. Contractor to verify a level landing per CBC 1133B.2.4. Contractor to make any needed adjustment to floor as required to provide level landing at all doors per CBC 1133B.2.4.

Doors A & B are to have Schlage AL50PD-619 handle w/ lock  
 Doors A & B are to standard butt hinges

**WALL FINISH NOTES**

1. All painted walls are to be single color, color to be chosen by Library.

2. All painted walls are to include one coat of primer and two finish coats.

3. Existing walls with patched areas or newly exposed areas are to be painted completely

**BID SET ONLY**  
**NOT FOR CONSTRUCTION**

REMODEL TO THE  
**SAUSALITO LIBRARY**  
 420 LITHO STREET, SAUSALITO CA 94965  
 A.P.N. 064-165-12

**REVISIONS**

07-30-2012	
08-22-2012	

**A2.0**  
 08-22-2012

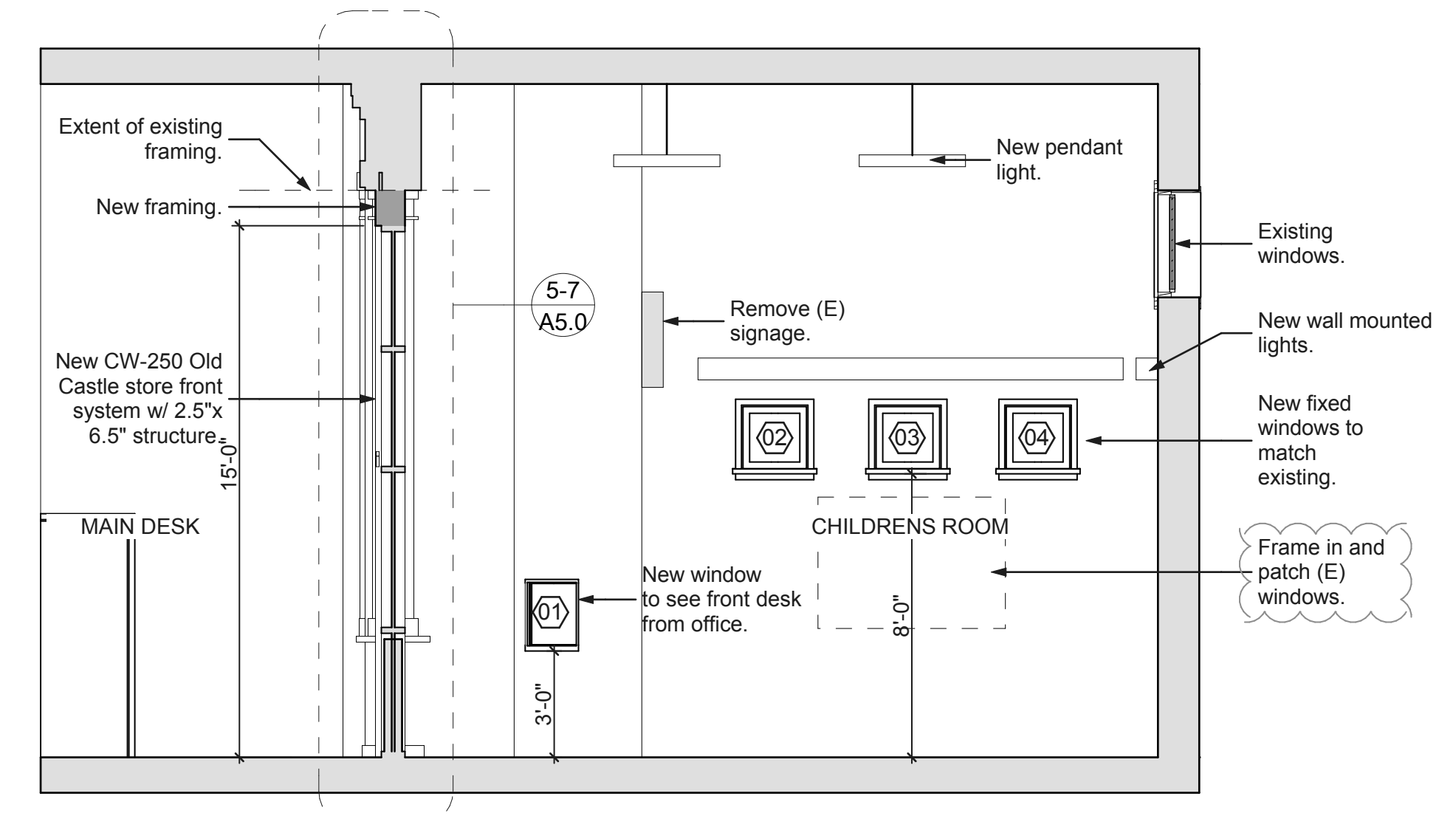


**REVISIONS**

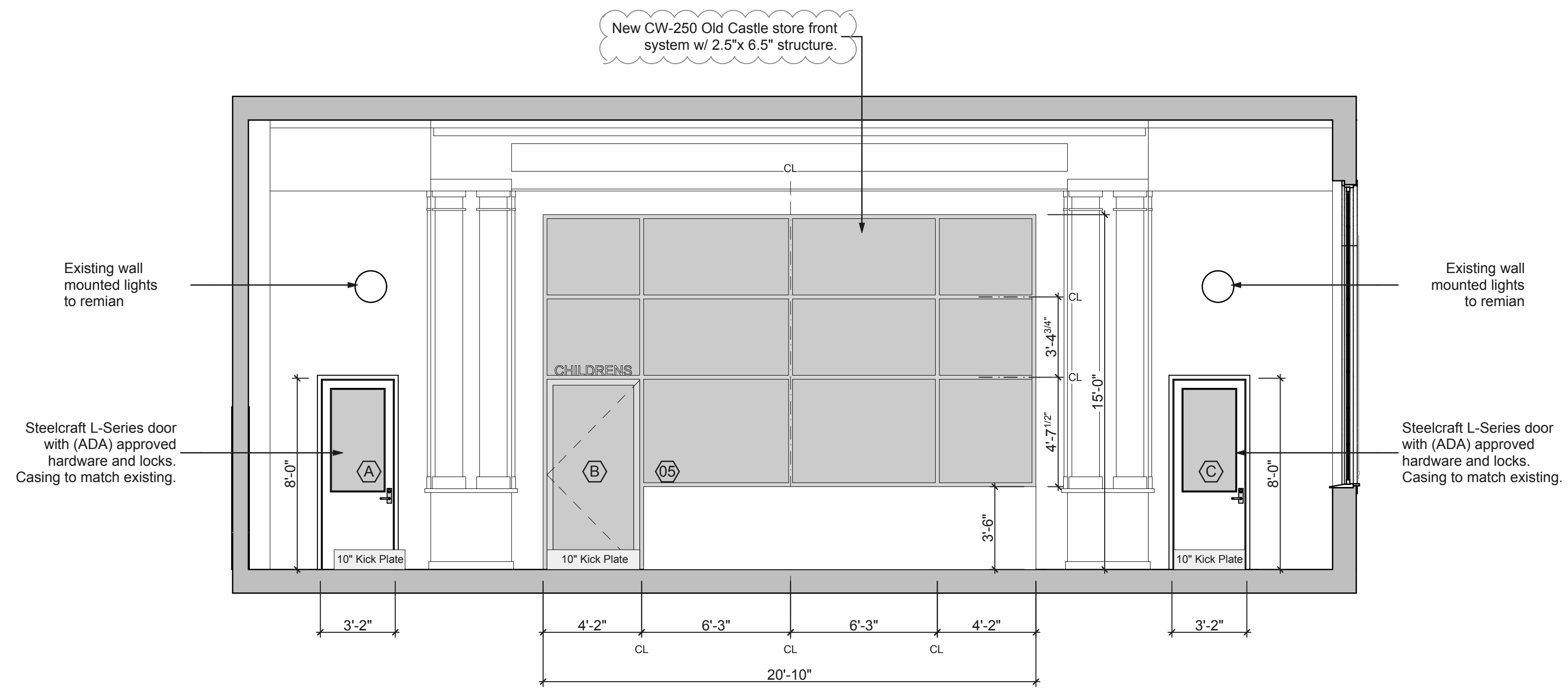
07-30-2012  
08-22-2012

**A3.0**

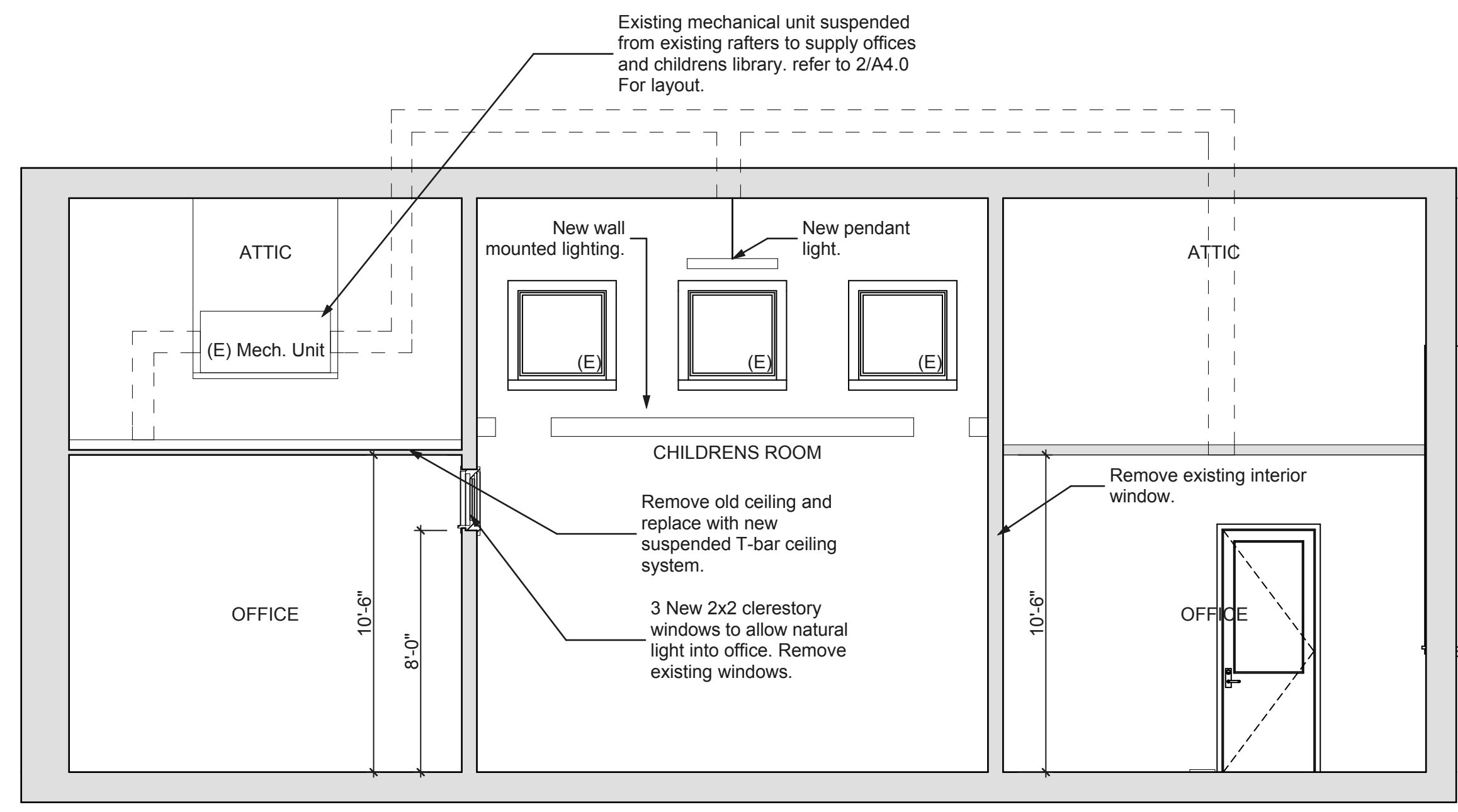
08-22-2012



**2** Elevation / Section  
SCALE: 1/4" = 1'-0"



**1** Elevation  
SCALE: 1/4" = 1'-0"

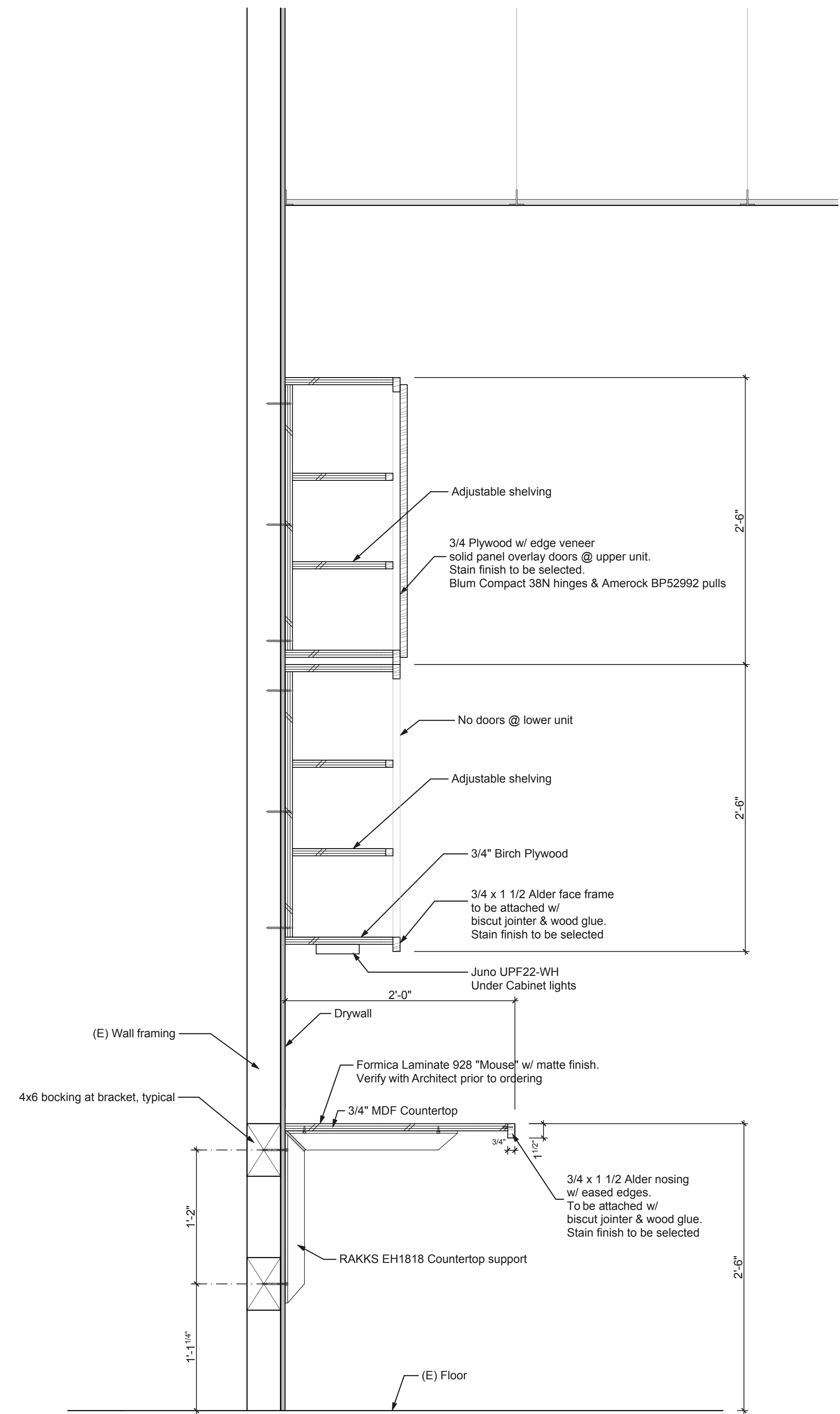


**3** Elevation / Section  
SCALE: 1/4" = 1'-0"

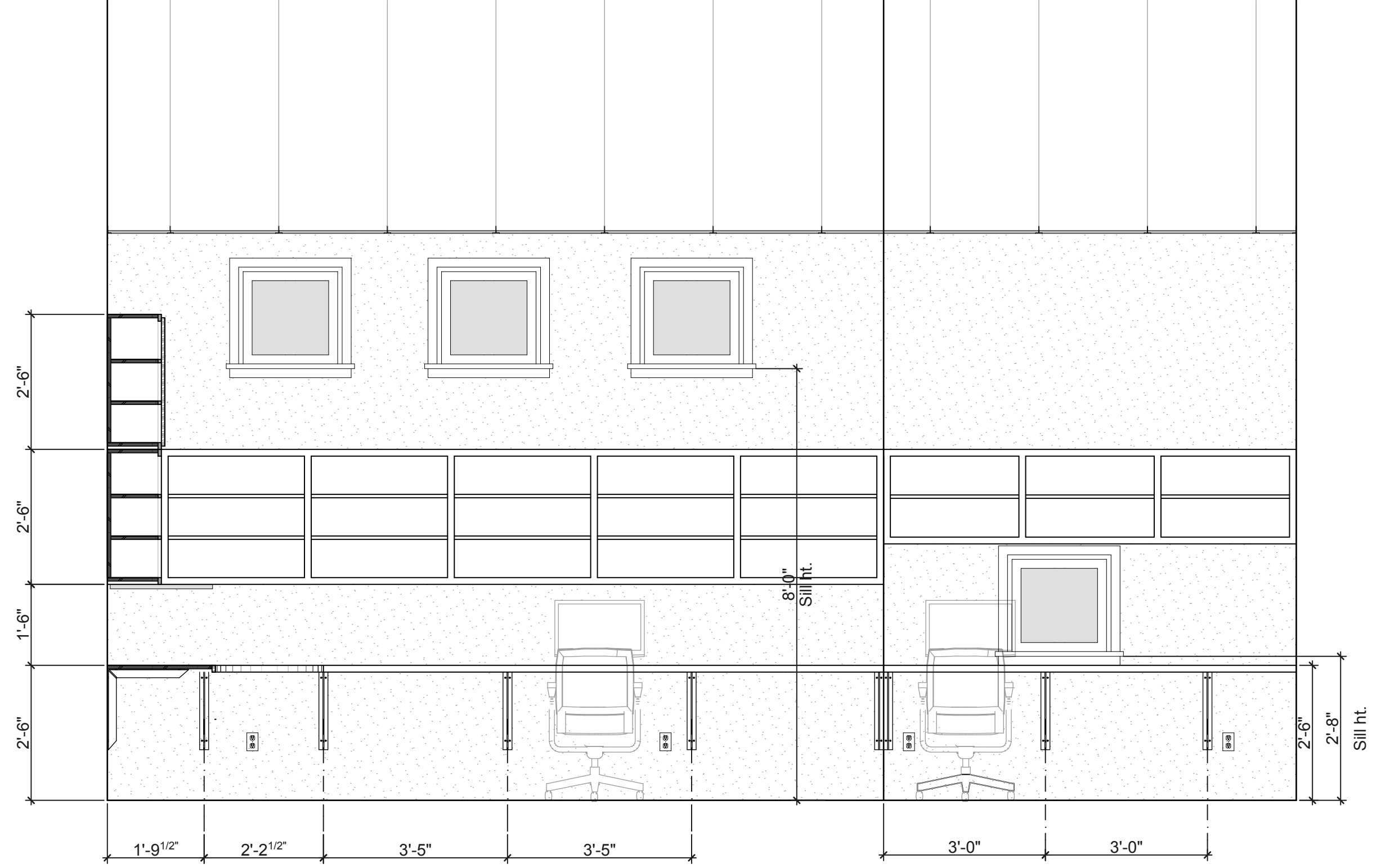
BID SET ONLY  
NOT FOR CONSTRUCTION

**REVISIONS**

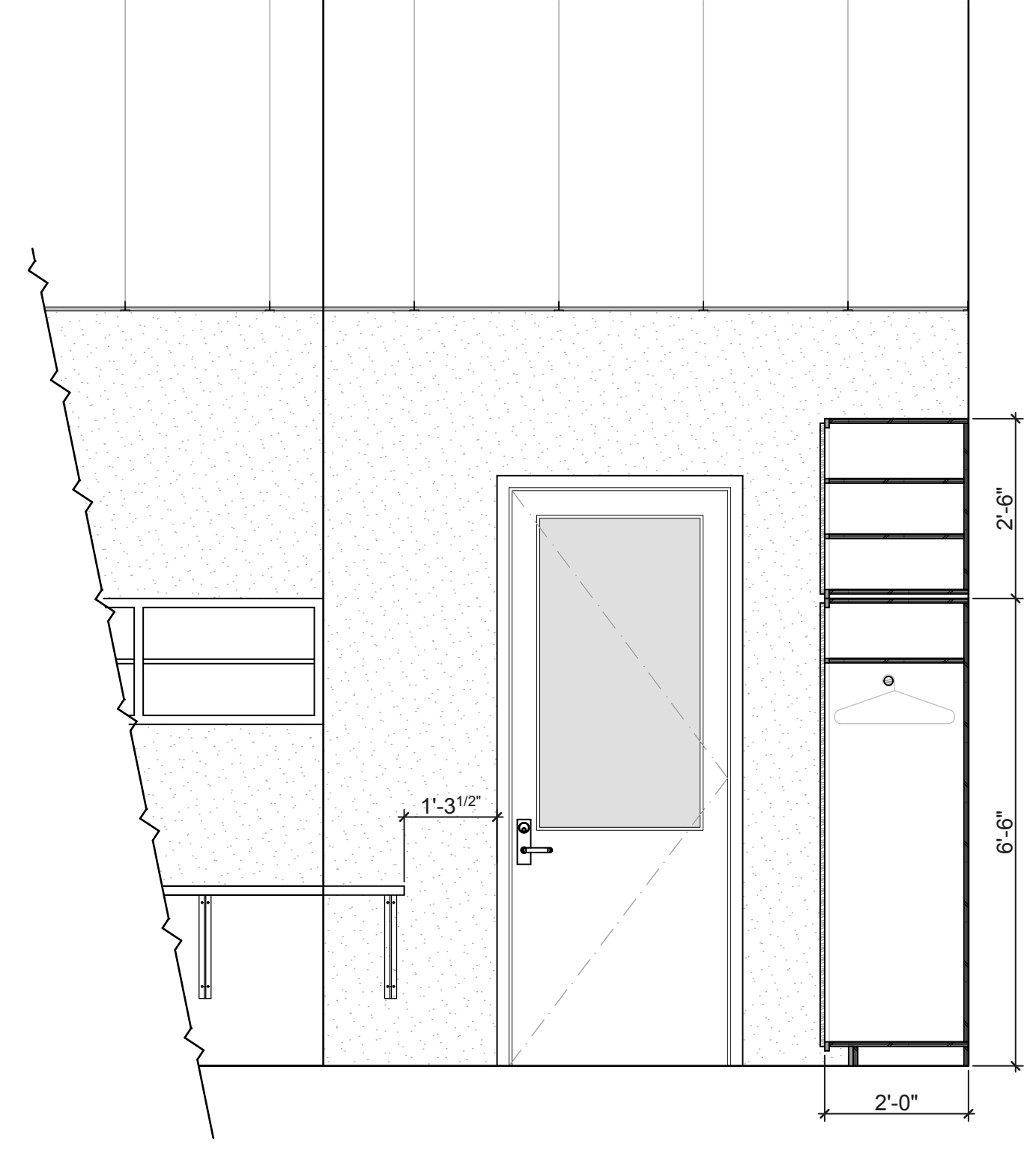
07-30-2012	
08-22-2012	



**COUNTERTOP & SHELVING**  
SCALE: 1 1/2" = 1' - 0"

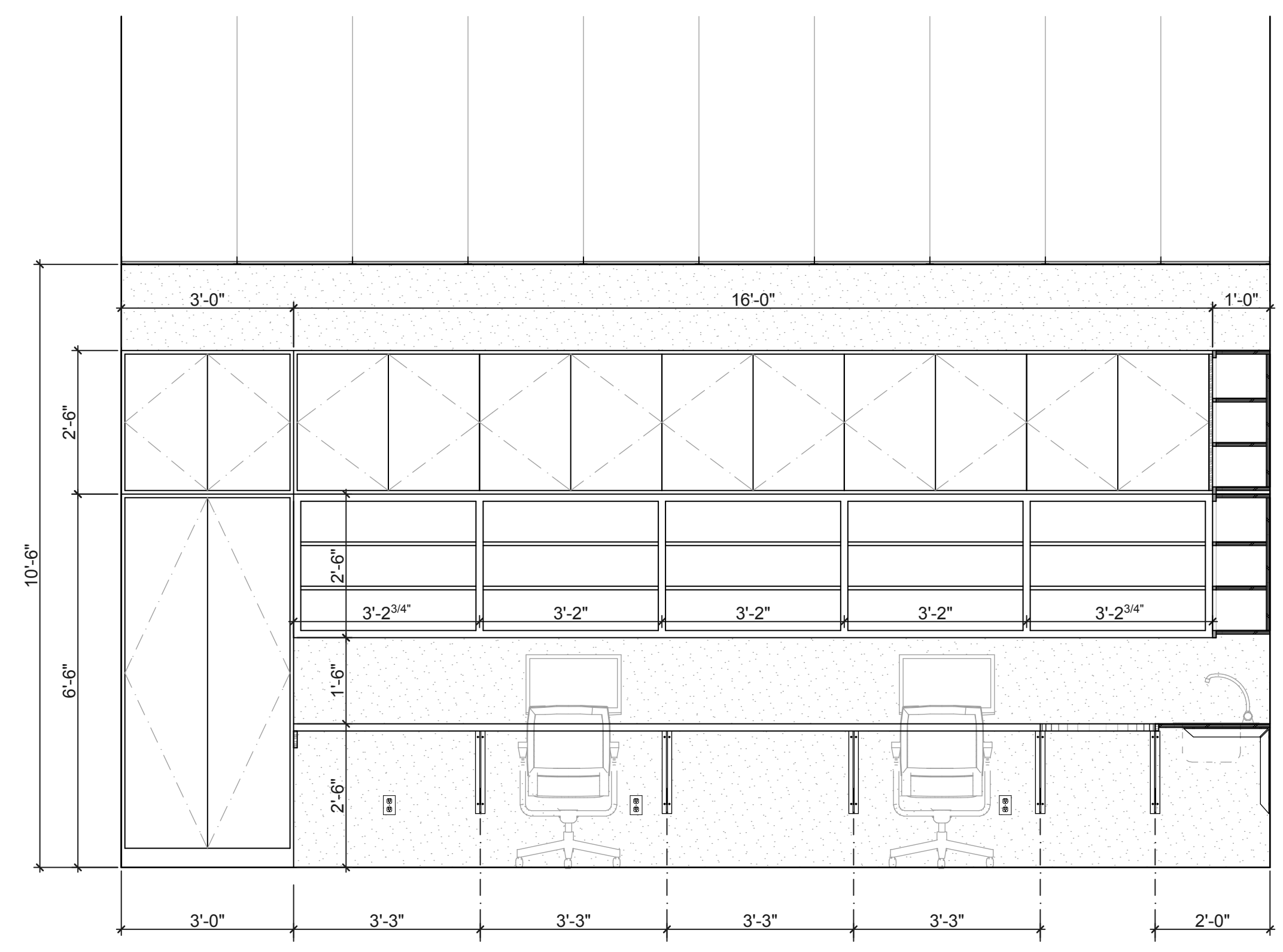


**1 ELEVATION**  
SCALE: 1/2" = 1' - 0"

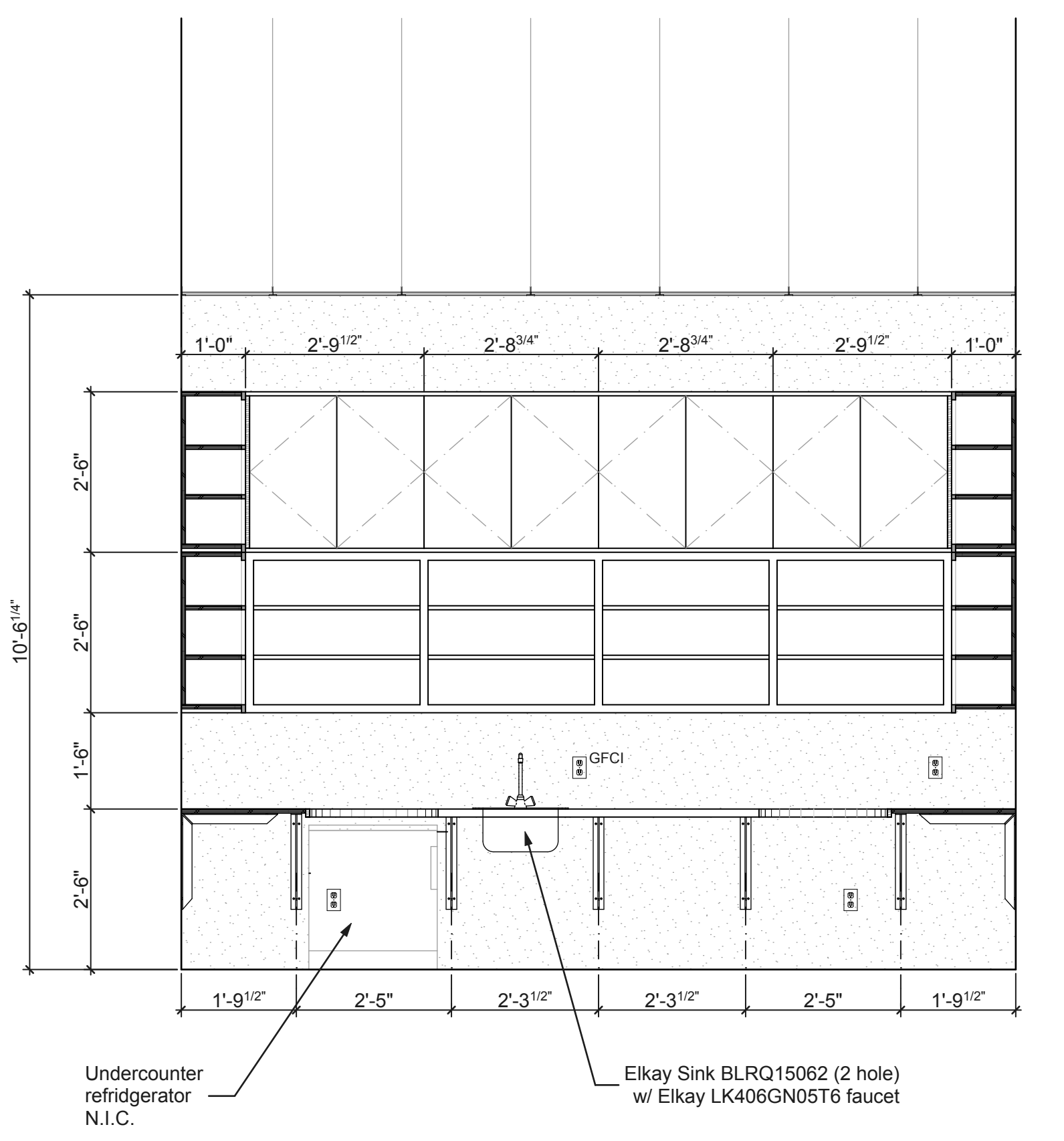


**2 ELEVATION**  
SCALE: 1/2" = 1' - 0"

**3 ELEVATION**  
SCALE: 1/2" = 1' - 0"

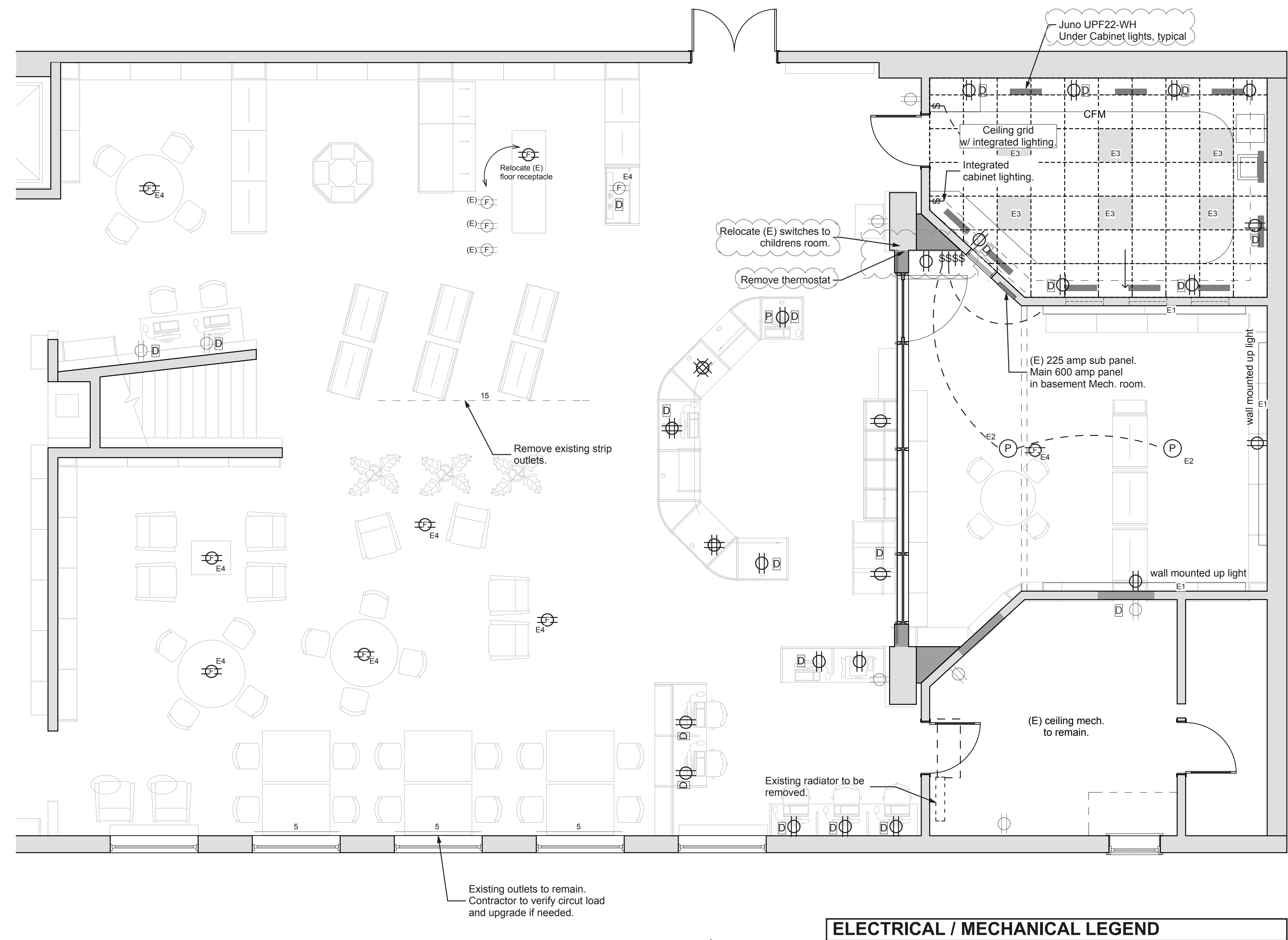
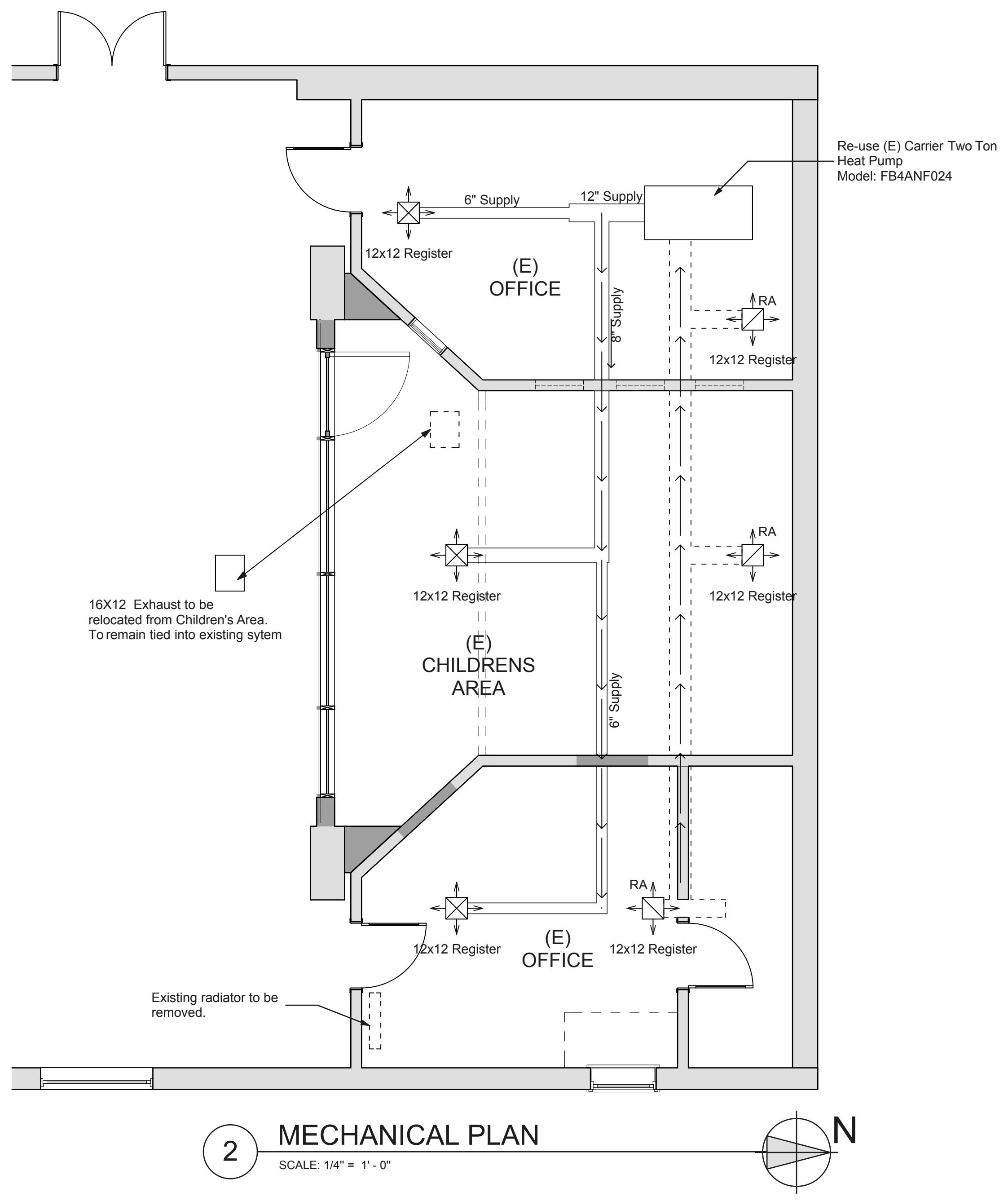


**4 ELEVATION**  
SCALE: 1/2" = 1' - 0"



**5 ELEVATION**  
SCALE: 1/2" = 1' - 0"

**BID SET ONLY**  
**NOT FOR CONSTRUCTION**



- Notes:**
1. Electrical plan is diagrammatic only. All fixture and receptacle locations are to be verified by Architect.
  2. Existing electrical to remain. Contractor to verify outlet locations per NEC Article 210-52.
  3. All outlets, except those dedicated to a specific appliance, shall be mounted a maximum of 48" AFF to the top of the box and a minimum of 15" AFF to the bottom of the box.

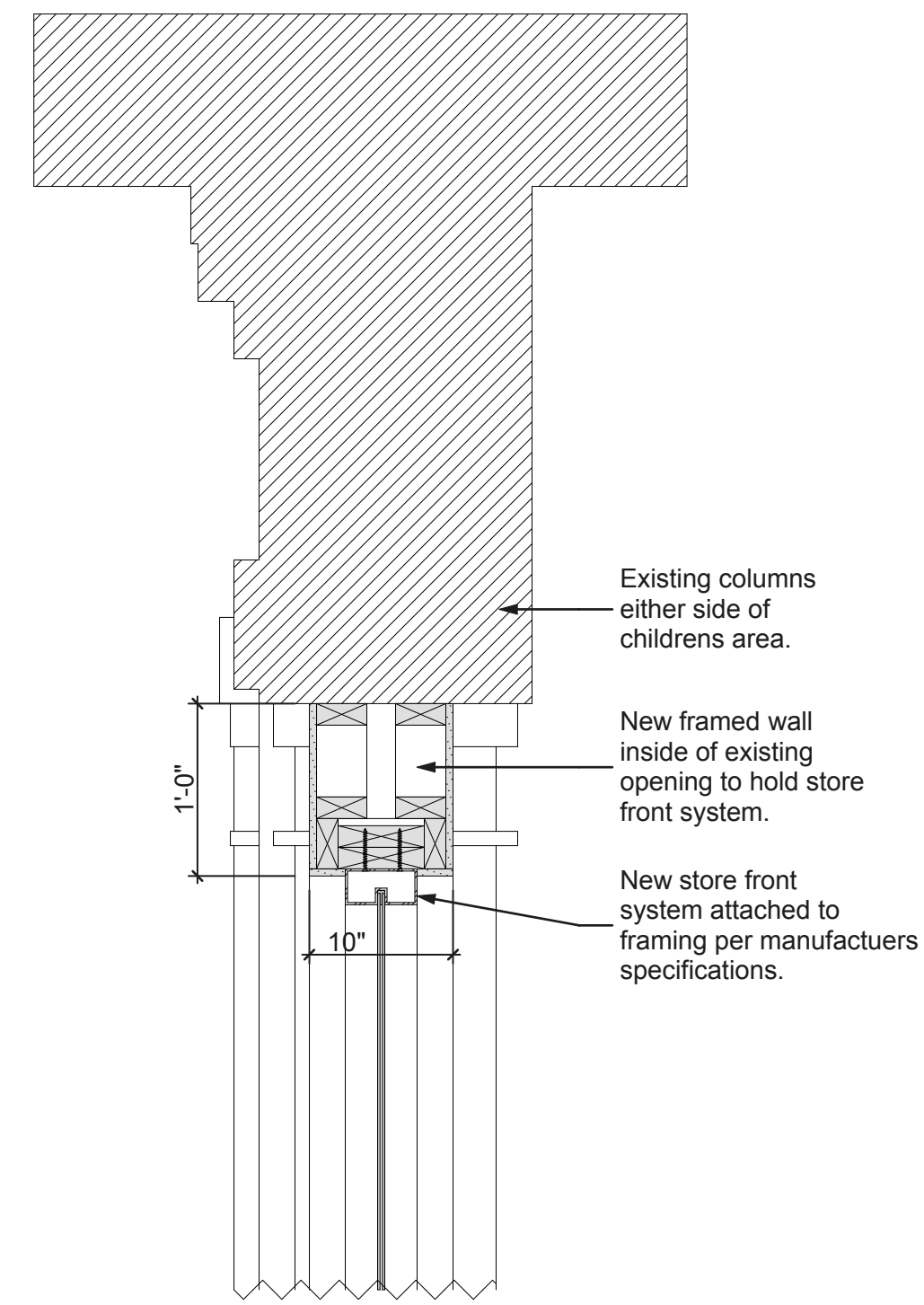
ELECTRICAL SCHEDULE		
Manufacturer	Model Number	Notes:
E1	LITECONTROL W-ID-66N24T8-FP-CSL-ELB-TW-F-120	Wall Mounted General Uplighting - verify height / location with Architect prior to installation
E2	LITECONTROL P-1D-3630BX39/21-2D-FP-CSL-ELB10-F-120	Ceiling Mounted Pendant Lighting - verify height / location with Architect prior to installation
E3	LITHONIA LIGHTING 2TLED	2x2 LED fixture to be integral w/ ceiling system
E4	CARLON B234BFBB	In Floor receptacle box w/ brass cover

ELECTRICAL / MECHANICAL LEGEND			
⌘	Switch	⌘	Panic Button
⌘₃	Three Way Switch	⌘	Telephone
⌘₃	Three Way Switch w/ Dimmer	afci	Arc fault circuit interrupter
⌘	Duplex outlet	+42	Mounting height in inches
⌘	220 Outlet	⌘	Fluorescent Fixture
⌘	Power Strip	⌘	Exhaust Fan
⌘	Pendant light	⌘	Smoke Detector (see Electrical Note #11)
⌘	Recessed fluorescent down light	⌘	Supply ceiling diffuser.
⌘	Wall mounted fixture	⌘	Supply duct.
⌘	Surface mounted fixture	⌘	Return ceiling diffuser.
⌘	Floor Outlet	⌘	Return duct.
⌘	Data / Internet	⌘	Under Cabinet Light
⌘	Thermostat		

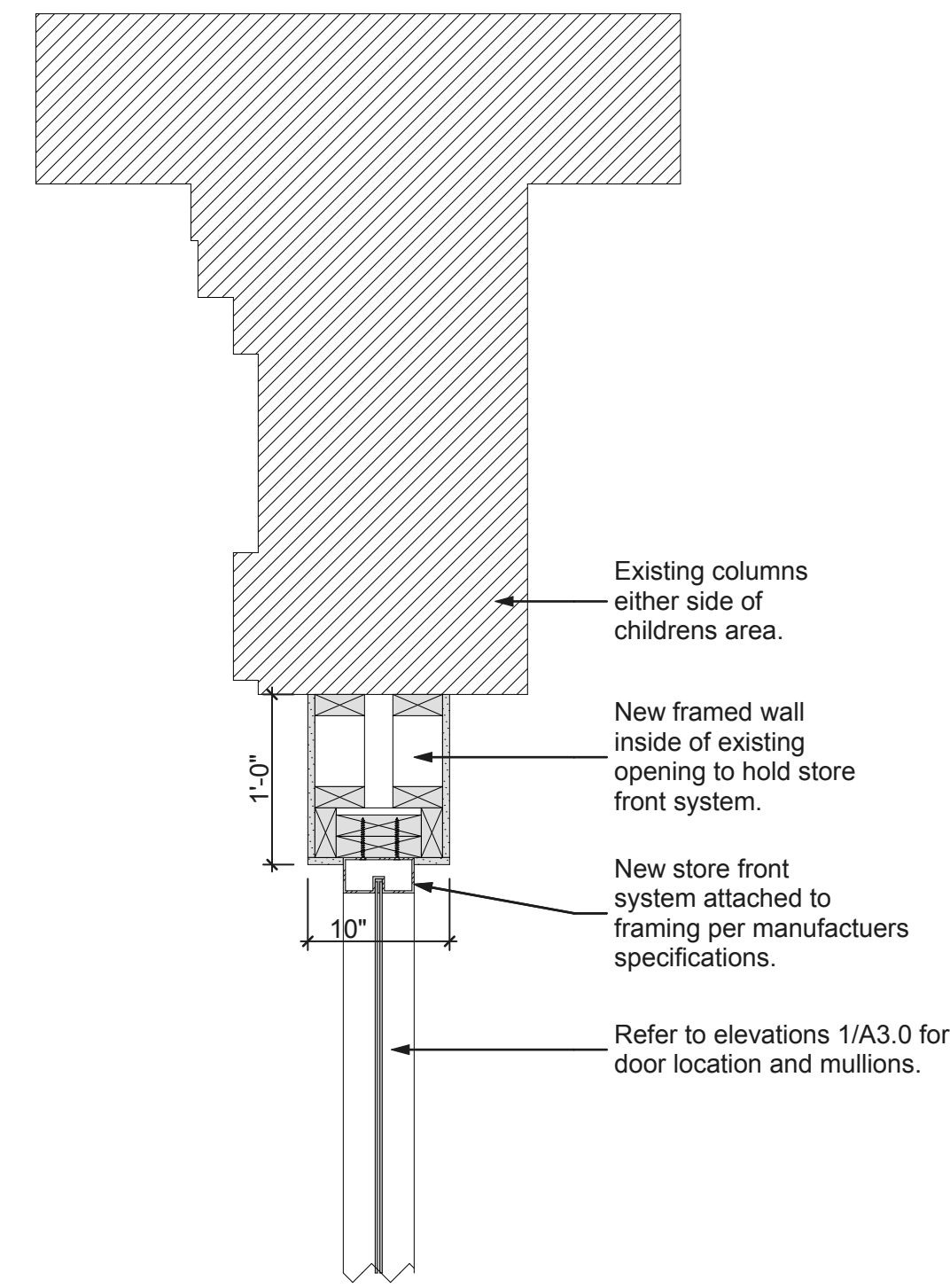
BID SET ONLY  
 NOT FOR CONSTRUCTION

**REVISIONS**

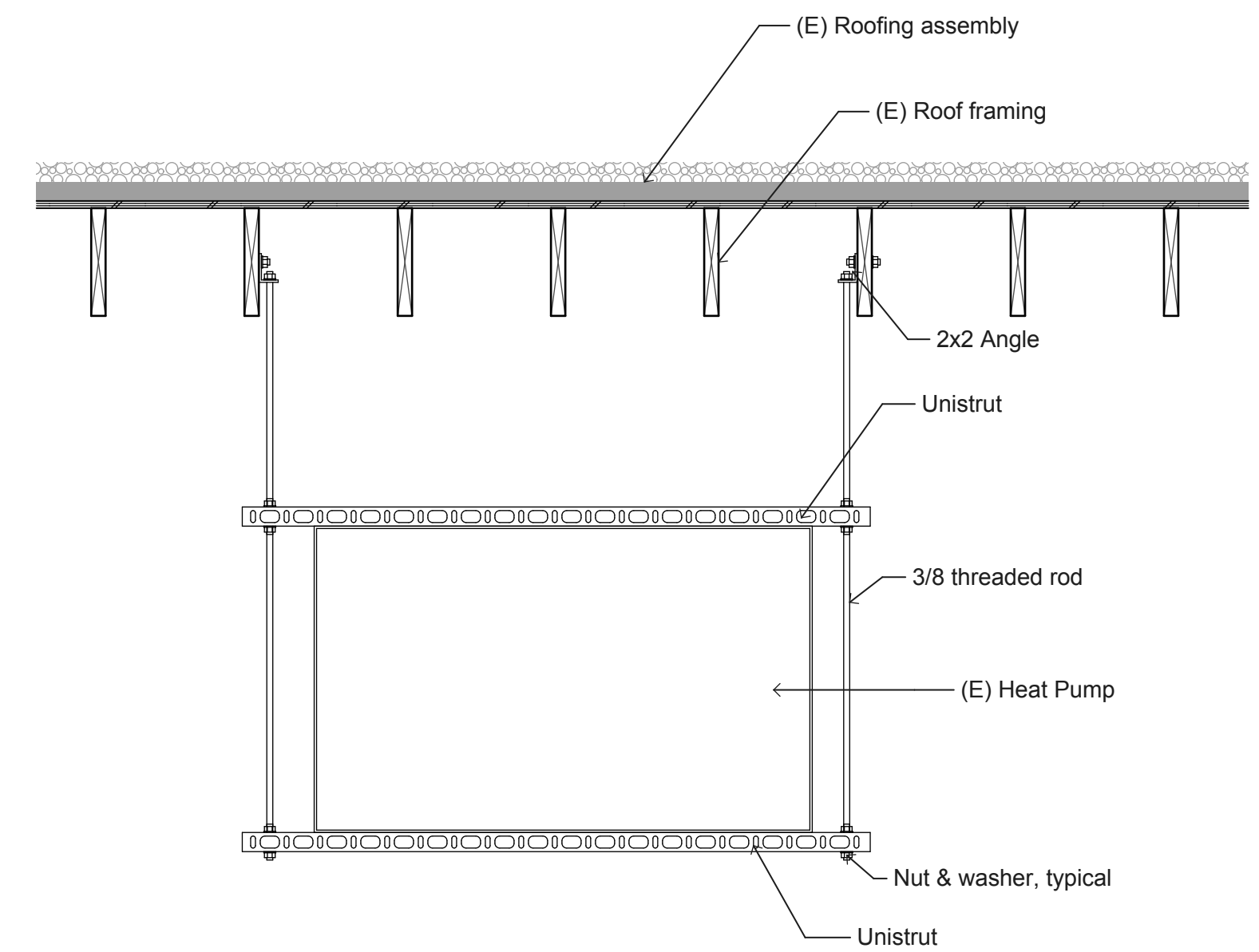
07-30-2012	
08-22-2012	



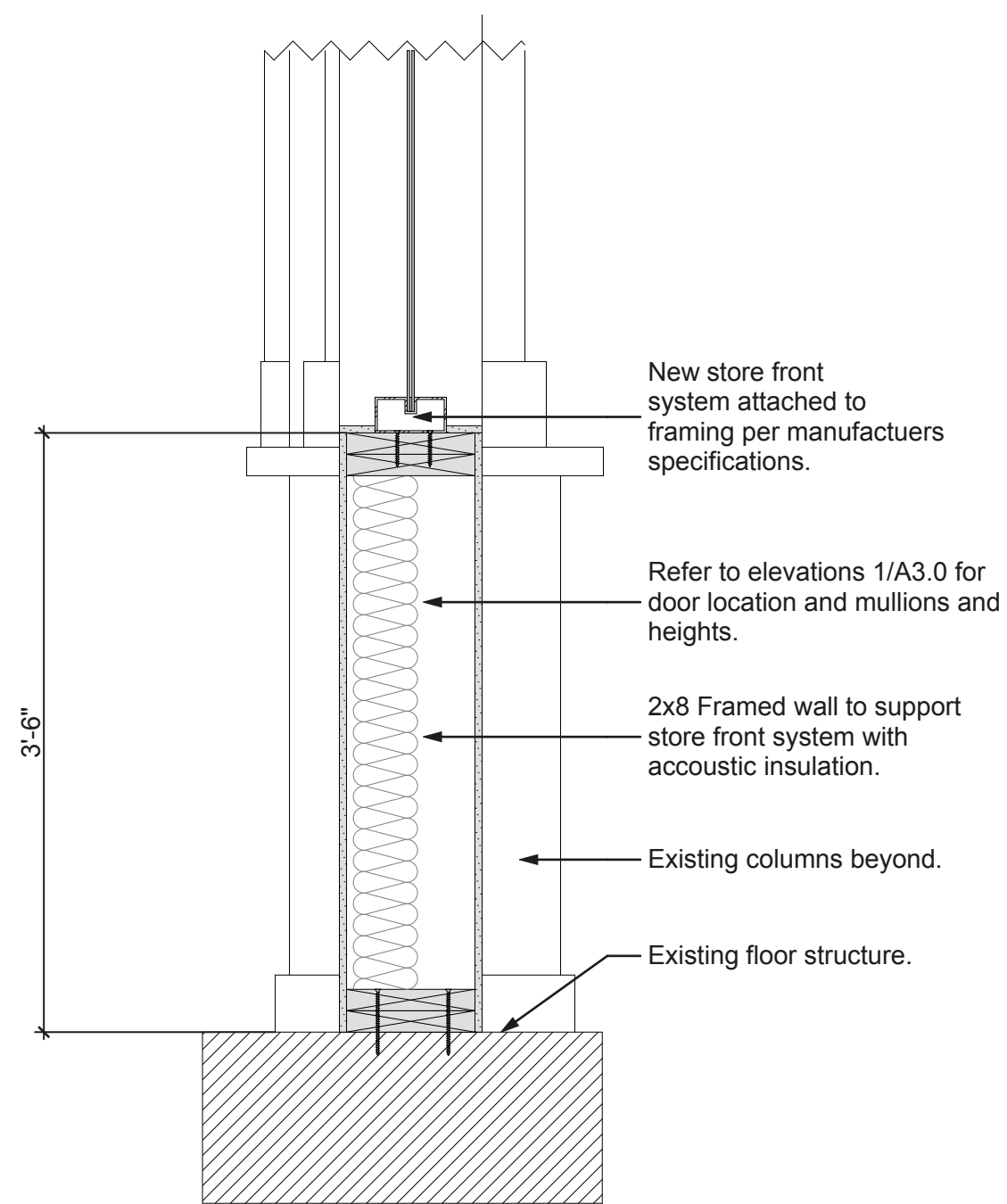
7 ALUM. STOREFRONT HEAD  
SCALE: 1" = 1'-0"



5 ALUM. STOREFRONT JAMB  
SCALE: 1" = 1'-0"



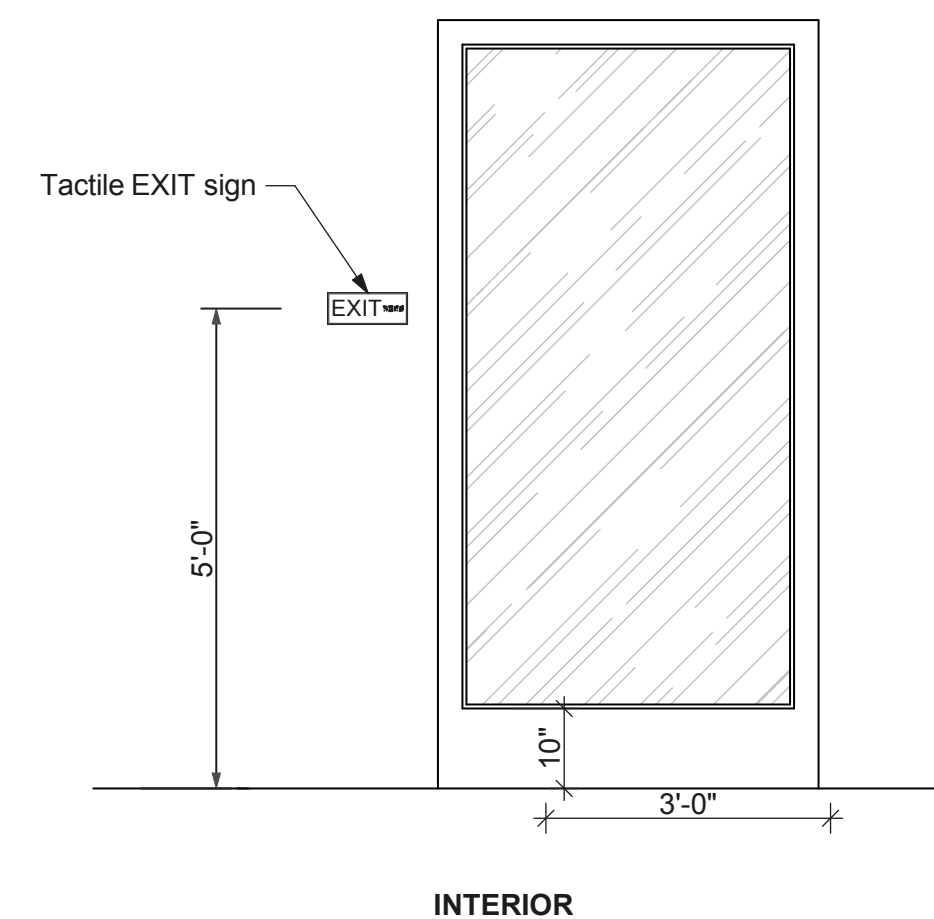
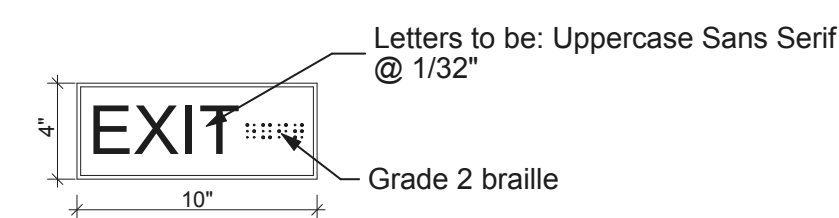
4 HANGING EQUIPMENT, TYPICAL  
SCALE: 3/4" = 1'-0"



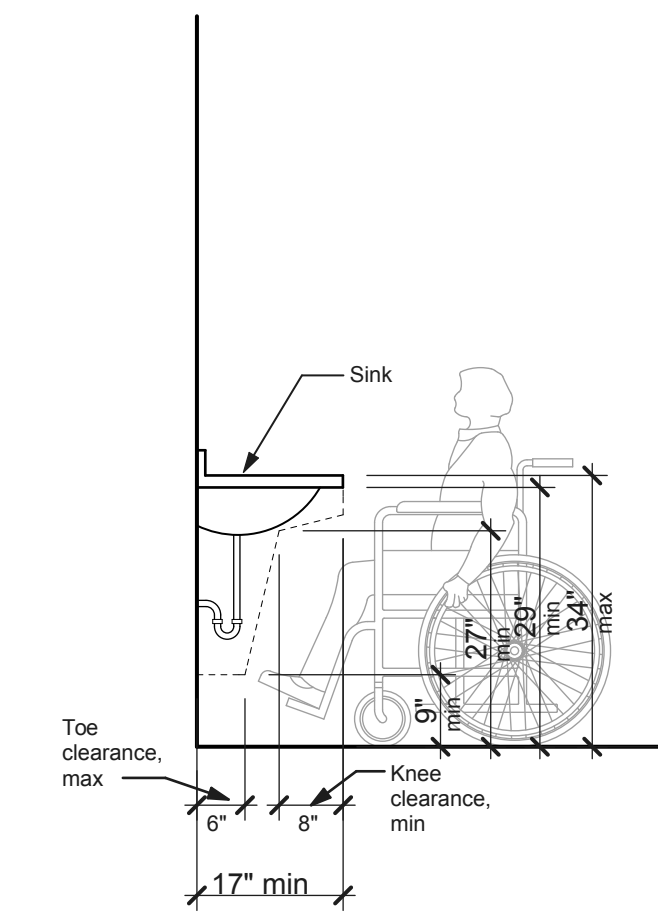
6 ALUM. STOREFRONT SILL  
SCALE: 1" = 1'-0"

**NOTES:**

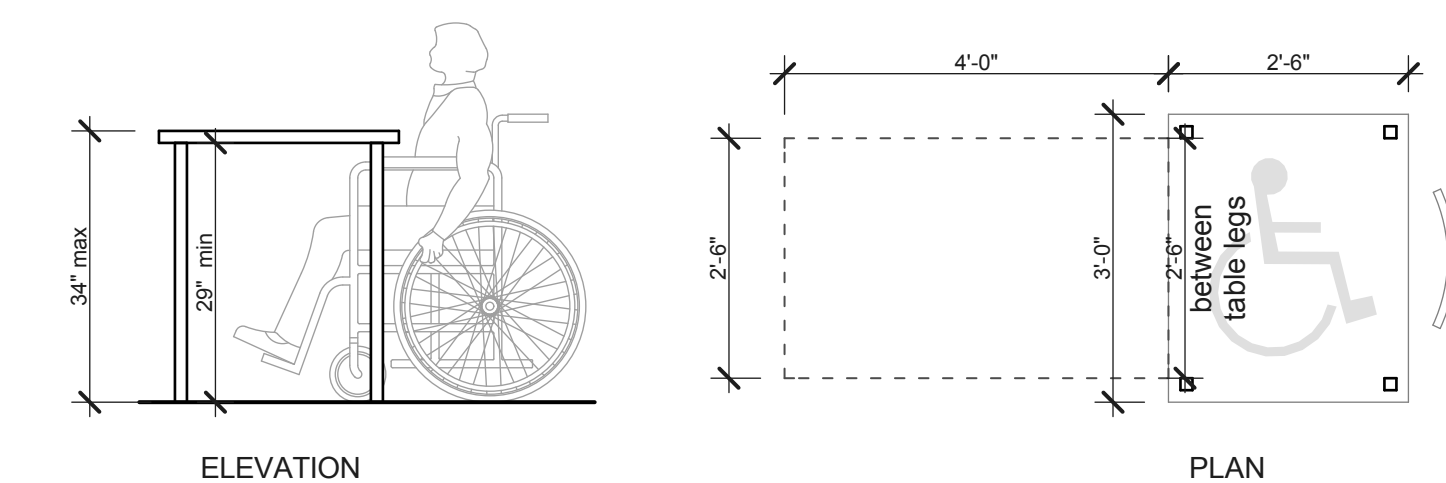
1. Characters will contrast with background light characters with dark background, or dark characters with a light background. Characters and background of signs is eggshell, matte, or non-glare finish. (1003.2.8.6 & 1117B.5.2)
2. Letters on signs have a width-to-height ratio between 3:5 and 1:1, and a stroke width-to-height ratio between 1:5 to 1:10. (1003.2.8.6 & 1117B.5.3)
3. Mounting height is 60" from the finish floor to the centerline of the sign. (1003.2.8.6 & 1117B.5.7)
4. Braille dot to be raised a minimum of 1/40" (1003.2.8.6 & 1117B.5.6)



3 TACTILE EXIT SIGNAGE, TYPICAL  
SCALE: 1/2" = 1'-0"



2 ACCESSIBLE SINK  
SCALE: 1/2" = 1'-0"



1 ACCESSIBLE TABLE  
SCALE: 1/2" = 1'-0"

BID SET ONLY  
NOT FOR CONSTRUCTION

**REVISIONS**

07-30-2012	
08-22-2012	