

CITY OF SAUSALITO



PRIORITY 1 SEWER REPLACEMENT PROJECT 1B SPINNAKER/HUMBOLDT AVENUE SEWER AND ANCHOR PUMP STATION REHABILITATION


MARIN COUNTY, CALIFORNIA
REVISED FOR BIDDING SEPTEMBER 2012

SHEET NO.	DWG NO.	DESCRIPTION
1	G01	TITLE SHEET & LOCATION MAP
2	G02	GENERAL NOTES AND LEGEND
3	G03	EROSION CONTROL NOTES AND DETAILS
4	C01	HUMBOLDT AVENUE IMPROVEMENTS PLAN AND DETAILS
5	CO2	HUMBOLDT AVENUE STA 10+00 TO STA 15+00 PLAN & PROFILE
6	C03	SPINNAKER AVENUE STA 15+00 TO STA 19+50 PLAN & PROFILE
7	C04	SPINNAKER RESTAURANT STA 19+50 TO STA 20+96± PLAN & PROFILE
8	C05	DETAILS 1
9	C06	DETAILS 2
10	C07	ANCHOR PUMP STATION DEMOLITION PLAN
11	C08	ANCHOR PUMP STATION WET WELL/VALVE VAULT PLANS
12	C09	ANCHOR PUMP STATION WET WELL/VALVE VAULT SECTIONS AND DETAILS
13	C10	ANCHOR PUMP STATION WET WELL/VALVE VAULT SECTIONS AND DETAILS
14	C11	MANHOLE 190006 PACKAGE LIFT STATION STA 18+89
15	C12	MANHOLE DETAILS
16	E1	ELECTRICAL SYMBOLS & ABBREVIATIONS
17	E2	TYPICAL ONE LINE DIAGRAM
18	E3	TYPICAL PEDESTAL ELEVATION
19	E4	DISTRICT RTU LAYOUT & DISTRIBUTION DIAGRAM
20	E5	TYPICAL ELEMENTARY DIAGRAM
21	E6	ANCHOR PUMP STATION ELECTRICAL SITE PLAN
22	E7	SPINNAKER PUMP STATION ELECTRICAL SITE PLAN
23	E8	EXAMPLE INTERCONNECT DIAGRAM
24	E9	TYPICAL ELECTRICAL DETAILS NO. 1
25	E10	TYPICAL ELECTRICAL DETAILS NO. 2
26	I1	INSTRUMENTATION SYMBOLS & ABBREVIATIONS
27	I2	ANCHOR PUMP STATION P & ID
28	I3	SPINNAKER PUMP STATION P & ID

N:\Clients\454 City of Sausalito\02-09-02 Priority 1 Sewer Replacement Design\CAD\Design\Project 1B\45402-0902-C01.dwg 09-11-12 03:18:19 PM nichols



LOCATION MAP
NTS

APPROVED: 
 JONATHON GOLDMAN, REGISTERED PROFESSIONAL ENGINEER, R.C.E. 42165
 CIVIL
 STATE OF CALIFORNIA

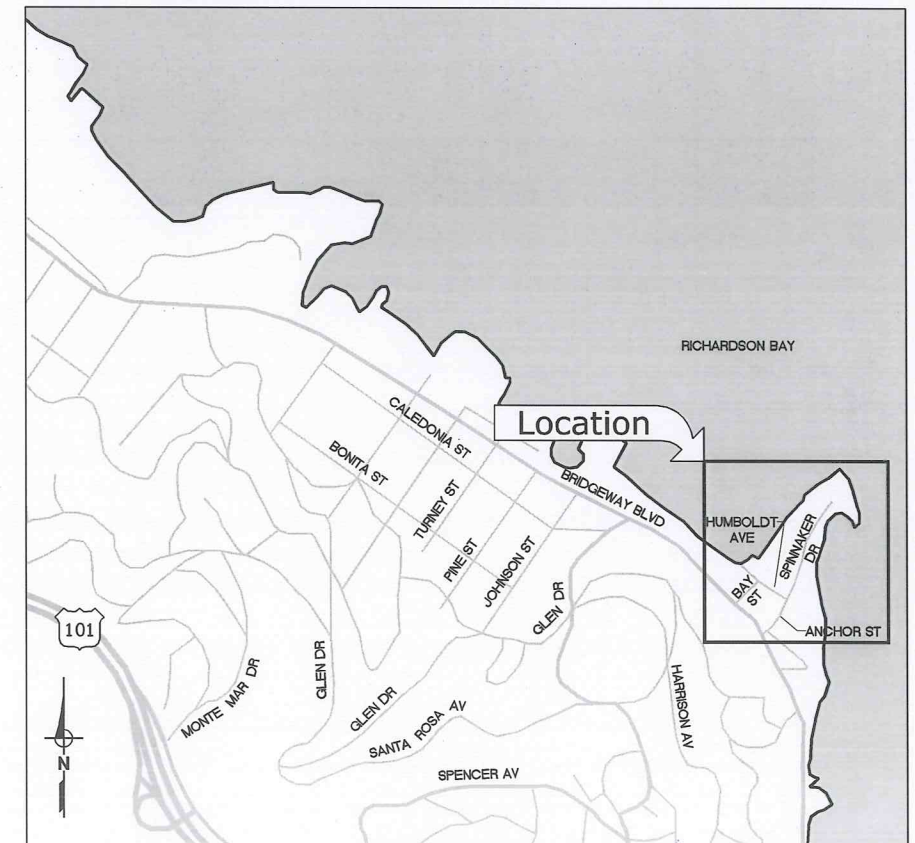
APPROVED: TODD TEACHOUT, CITY ENGINEER, R.C.E. 43056



WEST YOST ASSOCIATES
 Consulting Engineers
 2020 Research Park Drive
 Suite 100
 Davis, California 95618
 (530) 756-5905
 FAX (530) 756-5991



9/11/12



VICINITY MAP
NTS

ABBREVIATIONS

AB	AGGREGATE BASE	(N)	NEW
AC	ASPHALT CONCRETE	NIC	NOT IN CONTRACT
ACP	ASBESTOS CEMENT PIPE	NO.	NUMBER
AVE	AVENUE	NTS	NOT TO SCALE
BIC	BREAK IN CONNECTION	O.C	ON CENTER
BM	BENCHMARK	PG&E	PACIFIC GAS & ELECTRIC
CDF	CONTROLLED DENSITY FILL	PL	PROPERTY LINE
CIP	CAST IRON PIPE	PVC	POLY VINYL CHLORIDE PIPE
CLSM	CONTROLLED LOW STRENGTH MATERIAL	RC	RELATIVE COMPACTION
CO	CLEAN OUT, COMPANY	RCB	REINFORCED CONCRETE BOX
COMM	COMMUNICATIONS	RCP	REINFORCED CONCRETE PIPE
CONC	CONCRETE	ROW	RIGHT-OF-WAY
D	DRAIN	S	SLOPE, SEWER, SOUTH
DIA	DIAMETER	SD	STORM DRAIN
DIP	DUCTILE IRON PIPE	SHT	SHEET
DR	DRIVE, DIMENSION RATIO	SPEC	SPECIFICATION
DS	DOWNSTREAM	SS	SANITARY SEWER
DWG	DRAWING	SSMH	SANITARY SEWER MANHOLE
E, EX, EXIST	EXISTING	ST STL	STAINLESS STEEL
EL, ELEV	ELEVATION	ST	STREET
EP	EDGE OF PAVEMENT	STA	STATION
EW	EACHWAY	STD	STANDARD
FO	FIBER OPTIC	STL	STEEL
FH	FIRE HYDRANT	T	TANGENT, TELEPHONE
FL	FLOW LINE	TEL	TELEPHONE
FT	FOOT, FEET	TS	TRAFFIC SIGNAL
G	GAS	TSB	TRAFFIC SIGNAL BOX
GRND	GROUND	TYP	TYPICAL
HORZ	HORIZONTAL	UGE	UNDERGROUND ELECTRIC
INV	INVERT	UNO	UNLESS NOTED OTHERWISE
L	LENGTH	US	UPSTREAM
LF	LINEAR FOOT, LOAD FACTOR	V	VERTICAL
MAX	MAXIMUM	VCP	VITRIFIED CLAY PIPE
MIN	MINIMUM	VERT	VERTICAL
MH	MANHOLE	W	WEST, WATER, WIRE
MON	MONUMENT	WM	WATER METER
		WV	WATER VALVE

LEGEND

	EXISTING COMMUNICATION
	EXISTING PROPERTY LINE
	EXISTING STORM DRAIN
	EXISTING DRAIN TO BE ABANDONED
	EXISTING DRIVEWAY
	EXISTING OVERHEAD ELEC/CABLE
	EXISTING UNDERGROUND ELEC
	EXISTING GAS
	EXISTING FIRE HYDRANT
	EXISTING LIGHT POLE
	EXISTING PG&E BOX
	EXISTING SEWER WITH MANHOLE
	EXISTING SEWER TO BE ABANDONED
	EXISTING SIGN
	EXISTING TRAFFIC LIGHTS
	EXISTING TELEPHONE WITH BOX
	EXISTING WATER WITH VALVE, METER
	HORIZONTAL OR VERTICAL CONTROL
	PROPOSED LIMITS OF WORK
	PROPERTY LINE
	PROPOSED LIFT STATION
	PROPOSED SEWER WITH MANHOLE

GENERAL NOTES

1. THE LOCATIONS OF THE BUILDING SEWERS (LATERALS) ARE APPROXIMATE AND ARE BASED ON TV LOGS PROVIDED BY THE CITY. EXACT LOCATION OF LATERALS MAY VARY. ANY LATERALS ENCOUNTERED AND DAMAGED DURING CONSTRUCTION MUST BE REPAIRED AS PER DETAILS.
2. CALL UNDERGROUND SERVICE ALERT (U.S.A.) AT 800-227-2600 AT LEAST 48 HOURS BEFORE DIGGING.
3. THE FOLLOWING UTILITIES MUST BE NOTIFIED AT LEAST 48 HOURS PRIOR TO BEGINNING ANY CONSTRUCTION WORK:

MUNICIPALITY/COMPANY	CONTACT	PHONE
SAUSALITO MARIN CITY SANITARY DISTRICT	KEVIN RAHMAN	(415) 332-0244
PG&E (SAN RAFAEL) GAS	MINDEE RAYBURN	(415) 257-3203
PG&E (SAN RAFAEL) ELECTRIC	MINDEE RAYBURN	(415) 257-3203
COMCAST CABLE	PAUL ALABONA	(707) 792-5168
SAUSALITO CITY FIRE DEPARTMENT	DEAN RAFFAINI	(415) 388-8182
MARIN MUNICIPAL WATER DISTRICT	CHI CHEUNG	(415) 945-1438
AT&T	ANITA GABRIELSON	(707) 575-2077

4. CONTRACTOR SHALL PREPARE A TRAFFIC CONTROL PLAN AND SUBMIT IT TO THE CITY FOR APPROVAL.
5. ALL MONUMENTS DISTURBED BY CONSTRUCTION SHALL BE REPLACED BY PROFESSIONAL LAND SURVEYOR REGISTERED IN THE STATE OF CALIFORNIA AT CONTRACTORS EXPENSE.
6. CONTRACTOR SHALL OBTAIN ENCROACHMENT PERMIT FROM CITY OF SAUSALITO. CONTRACTOR SHALL BE RESPONSIBLE FOR MEETING ENCROACHMENT PERMIT REQUIREMENTS. AWARD OF CONTRACT IS GRANT OF PERMIT. CITY WILL NOT CHARGE A FEE.
7. ALL UTILITIES SHOWN ON THESE PLANS WERE SCALED FROM THE UTILITY MAPS RECEIVED FROM THE UTILITY COMPANIES. THEY ARE BASED ON THE INFORMATION AVAILABLE TO THE ENGINEER AT THE TIME THESE PLANS WERE PRODUCED. THE ACTUAL LOCATIONS OF THE UTILITIES SHOWN ON THESE PLANS SHALL BE VERIFIED IN THE FIELD. SUCH VERIFICATION IS PART OF THE WORK.
8. LOCATIONS OF EXISTING UTILITIES SHALL BE MARKED IN THE FIELD BY USA PRIOR TO CONSTRUCTION. POTHOLING OR OTHER EXCAVATIONS MAY BE NECESSARY TO ESTABLISH THE EXISTING ELEVATIONS OF THE VARIOUS UTILITIES. THESE EXCAVATIONS ARE PART OF THE WORK AND SHALL BE AT NO ADDITIONAL COST TO THE CITY.
9. CONTRACTOR SHALL PROVIDE WRITTEN NOTIFICATION TO RESIDENTS AT LEAST 48 HOURS BEFORE SEWER LATERALS ARE DISCONNECTED.
10. PAVED AREA TO MATCH EXISTING. SEE SPECIFICATION 02500.
11. CONTRACTOR MAY CONTACT TODD TEACHOUT AT THE CITY OF SAUSALITO AT (415) 289-4100 OR PATRICK FUSS WITH WEST YOST ASSOCIATES CONSULTING ENGINEERS AT (530) 756-5905 WITH QUESTIONS.
12. EX SEWER FLOWS TO BE MAINTAINED DURING CONSTRUCTION, REFERENCE SPECIFICATIONS 02145.
13. CONTRACTOR SHALL REMAIN WITHIN THE LIMITS OF WORK WHILE INGRESS/ EGRESS FROM THE SITE. ENTER AND EXIT WORK AREA ON HUMBOLDT AVE. ALL STAGING AND STORAGE SHALL BE CONTAINED WITHIN THE ESTABLISHED WORK AREA. NO EQUIPMENT OR MATERIALS SHALL BE STORED ON PUBLIC STREETS OR UNAPPROVED STORAGE AREAS. MAINTAIN ACCESS TO SAUSALITO YACHT HARBOR ENTRANCE ON HUMBOLDT STREET, ALONG WITH ADJACENT PARKING LOT, BOARDWALK, AND BOAT SLIPS.
14. ALL WORK FROM STATION 18+90 TO SPINNAKER RESTAURANT, INCLUDING THE WORK TO BE DONE IN AND AROUND SPINNAKER RESTAURANT WILL BE PERFORMED DURING WORK HOURS INDICATED IN THE SPECIFICATIONS. ALL SEWAGE OUTAGES SHALL BE COORDINATED WITH THE RESTAURANT MANAGER. AT NO TIME SHALL THE SEWER BE OUT DURING BUSINESS HOURS 11AM TO 11 PM. ALL WORK WITHIN SPINNAKER RESTAURANT MUST BE COORDINATED WITH THE RESTAURANT MANAGER, JEFF SCHAROSCH (415) 332-1572.
15. THE CONTRACTOR SHALL PREVENT DEBRIS, INCLUDING SOILS, FROM ENTERING CITY AND/OR SAUSALITO-MARIN CITY SANITARY DISTRICT FACILITIES. IN THE EVENT DEBRIS ENTERS CITY OR DISTRICT FACILITIES, THE CITY AND DISTRICT SHALL BE NOTIFIED WITHIN ONE HOUR.
16. ALL STAINLESS STEEL SHALL BE TYPE 316 STAINLESS STEEL UNLESS NOTED OTHERWISE.

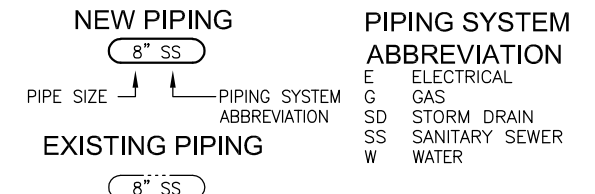
SECTION & DETAIL DESIGNATIONS

SECTION CUT ON DWG 21

ON DWG 23 THIS SECTION IS IDENTIFIED AS:

DETAILS ARE CROSS REFERENCED IN A SIMILAR MANNER, EXCEPT THAT DETAILS ARE IDENTIFIED BY LETTER RATHER THAN NUMBER

PIPING DESIGNATIONS



BENCHMARKS

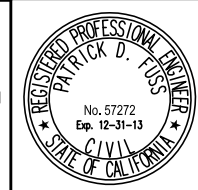
HORIZONTAL DATUM:
CALIFORNIA COORDINATE SYSTEM 83 (CCS83) ZONE 3 EPOCH DATE-2007 BASED UPON NATIONAL GEODETIC SURVEY 941 4819 TIDAL 32,

VERTICAL DATUM:
NORTH AMERICAN VERTICAL DATUM OF 1988 (NAVD 88)

TIDAL BENCHMARK
DESIGNATION: 941 4819 TIDAL 32
PID HT1067
ELEVATION = 11.71' GEOID03 (CONUS)
37 51 47.84052(N) 122 29 35.97900(W)

SURVEY FOR DESIGN PERFORMED BY
MERIDIAN SURVEYING ENGINEERING, INC
(415) 456-5450

N:\Clients\454 City of Sausalito\02-09-02 Priority 1 Sewer Replacement Design\CAD\Design\Project 1B\45402-0902-002.dwg 9-11-12 03:34:14 PM nichols



SUBMITTED:

DATE: 9/11/12

APPROVED: _____

DATE: _____

THIS LINE IS 1 INCH
AT FULL SCALE
IF NOT SCALE ACCORDINGLY

SCALE: AS SHOWN

DRAWN BY: ALN

DESIGNED BY: HLP

PROJ. MGR.: PDF

No.	ZONE	REVISIONS	BY	DATE

WEST YOST ASSOCIATES
Consulting Engineers

2020 Research Park Drive
Suite 100
Davis, California 95618
(530) 756-5905
FAX (530) 756-5991



CITY OF SAUSALITO PRIORITY 1 SEWER REPLACEMENT PROJECT 1B

GENERAL NOTES AND LEGEND

JOB NUMBER	454-02-09-02
DRAWING NUMBER	G02
SHEET NUMBER	2 OF 28
REVISION	

GENERAL

1. RUNNOFF FROM STREETS AND OTHER PAVED AREAS IS A MAJOR SOURCE OF POLLUTION IN SAN FRANCISCO BAY. CONSTRUCTION ACTIVITIES CAN DIRECTLY AFFECT THE HEALTH OF THE BAY. CONTRACTORS AND CREWS SHALL PLAN AHEAD TO KEEP DIRT, DEBRIS AND OTHER CONSTRUCTION WASTE AWAY FROM STORM DRAINS AND LOCAL CREEKS.
2. ALL EXCAVATED AREA SHALL BE PROVIDE WITH TEMPORARY EROSION CONTROL MEASURES.
3. TEMPORARY EROSION CONTROL SHALL BE REQUIRED FOR ALL AREAS WHERE NATURAL GROUND COVER IS DISTURBED AND ALL TEMPORARY EXCAVATION STOCKPILES.
4. PROTECTED AREAS SHALL BE REGULARLY INSPECTED AND MAINTAINED BY THE CONTRACTOR DURING THE COURSE OF THE WORK.

EARTHWORK AND CONTAMINATED SOILS

1. AVOID SCHEDULING EARTH DISTURBING ACTIVITIES DURING THE RAINY SEASON.
2. MATURE VEGETATION IS THE BEST FORM OF EROSION CONTROL. MINIMIZE DISTURBANCE TO EXISTING VEGETATION WHENEVER POSSIBLE.
3. IF SLOPES ARE DISTURBED DURING CONSTRUCTION, PREVENT EROSION BY SEEDING WITH GRASS AND SECURING SOIL WITH EROSION CONTROL BLANKETS, PLACE A SILT BARRIER DOWNSLOPE UNTIL SOIL IS SECURE.
4. REMOVE EXCAVATED SOIL FROM THE SITE, DO NOT STOCKPILE ON THE STREET OVERNIGHT.
5. USE SAND OR GRAVEL BAGS, STRAW WATTLES, SILT FENCES OR OTHER CONTROL MEASURES TO PREVENT THE FLOW OF SILT OFF THE SITE AND INTO STORM DRAINS OR CREEKS.

PAVING/ASPHALT WORK

1. DO NOT PAVE IN WET WEATHER OR WHEN RAIN IS FORECAST.
2. ALWAYS COVER STORM DRAIN INLETS AND MANHOLES WHEN PAVING OR APPLYING SEAL COAT, TACK COAT, SLURRY SEAL OR FOG SEAL.
3. DO NOT SWEEP OR WASH DOWN EXCESS MATERIALS INTO STORM DRAINS, DITCHES OR CREEKS. COLLECT MATERIALS AND DISPOSE OF THEM AS TRASH.
4. DO NOT USE WATER TO WASH DOWN FRESH ASPHALT OR CONCRETE.

MATERIAL STORAGE & WASTE DISPOSAL

1. SWEEP STREETS AND OTHER PAVED AREAS AS NEEDED. DO NOT WASH DOWN STREETS OR WORK AREAS WITH WATER.
2. STORE STOCKPILES OF DIRT SAND OR OTHER MATERIALS UNDER COVER AND AWAY FROM DRAINAGE AREAS. THESE MATERIALS MUST NEVER REACH A STORM DRAIN OR OTHER WATERCOURSE.
3. WASH OUT CONCRETE TRUCKS OFF SITE.

HAZARDOUS MATERIALS MANAGEMENT

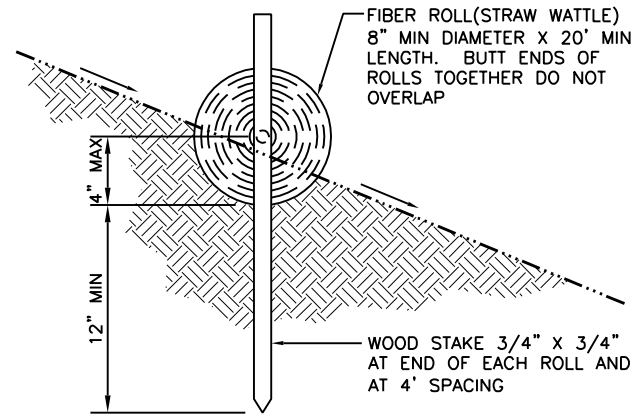
1. LABEL ALL HAZARDOUS MATERIALS/WASTES IN ACCORDANCE WITH CITY, STATE AND FEDERAL REGULATIONS.
2. STORE HAZARDOUS MATERIALS AND WASTES IN SECONDARY CONTAINMENT AND COVER THEM DURING WET WEATHER.
3. FOLLOW MANUFACTURER'S APPLICATION INSTRUCTIONS FOR HAZARDOUS MATERIALS. DO NOT USE MORE THAN NECESSARY.
4. DO NOT APPLY CHEMICALS OUTDOORS WHEN RAIN IS FORECAST WIHTIN 24 HOURS.
5. DISPOSE OF HAZARDOUS MATERIALS/WASTE IN ACCORDANCE WITH CITY, STATE AND FEDERAL REGULATIONS.

VEHICLE & EQUIPMENT MAINTENANCE

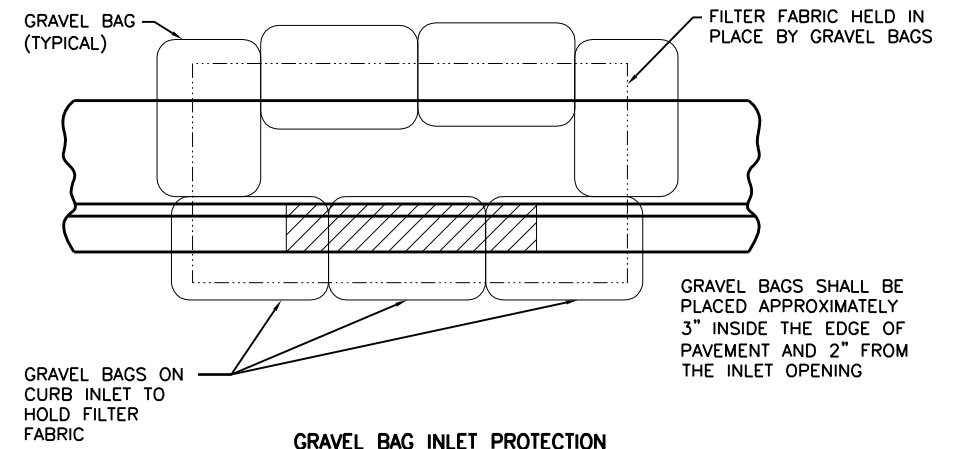
1. FREQUENTLY INSPECT VEHICLES AND EQUIPMENT FOR LEAKS. USE DRIP PANS TO CATCH LEAKS UNTIL REPAIRS ARE MADE; REPAIR LEAKS PROMPTLY.
2. FUEL AND MAINTAIN VEHICLES ON SITE ONLY IN A BERMED AREA OR OVER A DRIP PAN THAT IS BIG ENOUGH TO PREVENT RUNOFF.
3. DO NOT CLEAN VEHICLES ON PUBLIC STREETS.
4. WHEN CLEANING VEHICLES ON PRIVATE PROPERTY, DO NOT USE SOAPS, SOLVENTS, DEGREASERS, STEAM CLEANING EQUIPMENT, ETC. USE WATER ONLY AND CLEAN WITHIN A BERMED AREA TO PREVENT RUNOFF.

SAW CUTTING

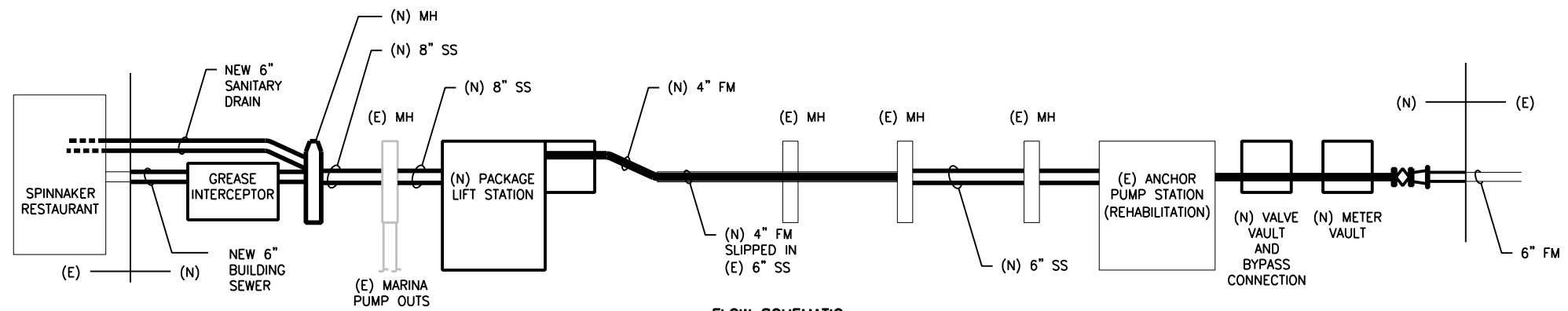
1. COMPLETELY COVER OR BARRICADE STORM DRAIN INLETS WHEN SAW CUTTING. USE FILTER FABRIC AND GRAVEL BAGS AS SHOWN IN DETAIL B TO KEEP SLURRY OUT OF THE STORM DRAIN SYSTEM. IF SAW CUT SLURRY ENTERS A STORM DRAIN, CLEAN UP IMMEDIATELY.
2. SHOVEL, ABSORB, OR VACUUM SAW CUT SLURRY AND PICK UP ALL WASTE AS SOON AS WORK IS COMPLETED IN AN AREA AND AT THE END OF EACH WORK DAY.



**FIBER ROLL
DETAIL A
NTS**

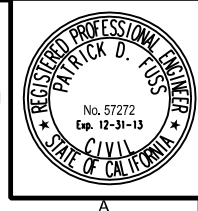


**GRAVEL BAG INLET PROTECTION
DETAIL B
NTS**



**FLOW SCHEMATIC
DETAIL C
NTS**

N:\Clients\454 City of Sausalito\02-09-02 Priority 1 Sewer Replacement Design\CAD\Design\Project 1B\45402-0902-C03.dwg 9-12-12 02:59:12 PM plus



SUBMITTED: *[Signature]*
DATE: 9/11/12
APPROVED: _____
DATE: _____

THIS LINE IS 1 INCH
AT FULL SCALE
IF NOT SCALE ACCORDINGLY
SCALE: **AS SHOWN**
DRAWN BY: **ALN**
DESIGNED BY: **HLP**
PROJ. MGR.: **PDF**

No.	ZONE	REVISIONS	BY	DATE

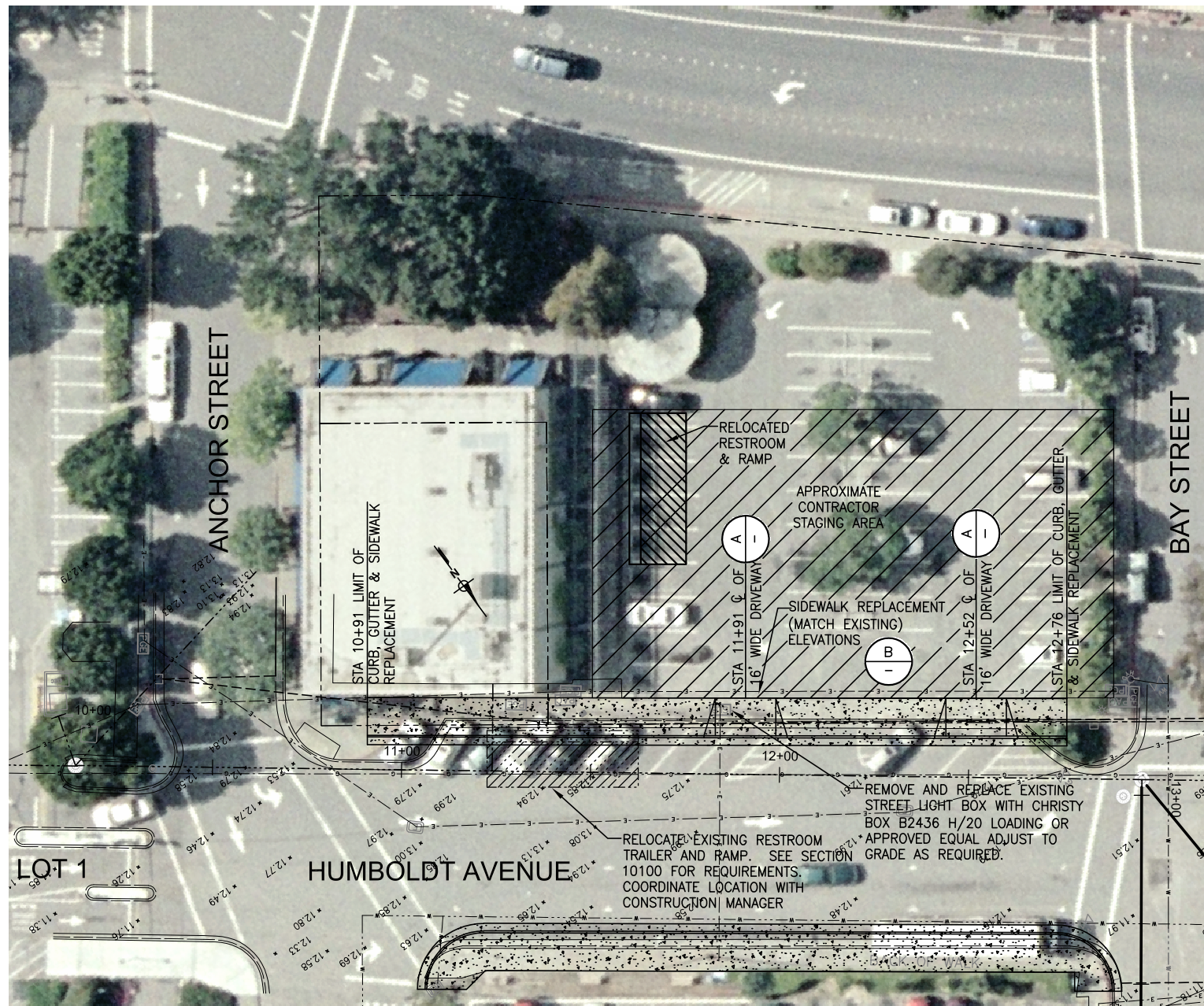
WEST YOST ASSOCIATES
Consulting Engineers
2020 Research Park Drive
Suite 100
Davis, California 95618
(530) 756-5905
FAX (530) 756-5991



**CITY OF SAUSALITO PRIORITY 1 SEWER
REPLACEMENT PROJECT 1B
EROSION CONTROL NOTES
AND DETAILS**

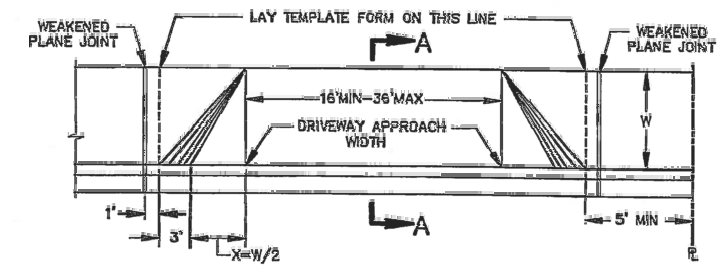
JOB NUMBER 454-02-09-02
DRAWING NUMBER G03
SHEET NUMBER 3 of 28
REVISION

N:\Clients\454 City of Sausalito\02-09-02 Priority 1 Sewer Replacement\Design\CAD\Design\Project 1B\45402-0902-C01-C04.dwg 9-11-12 04:35:03 PM onichols

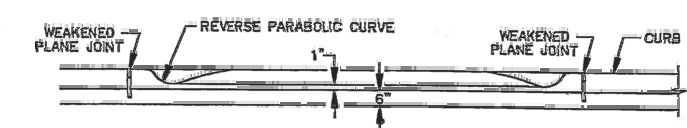


HUMBOLDT AVENUE
 PLAN
 SCALE: 1"=20'

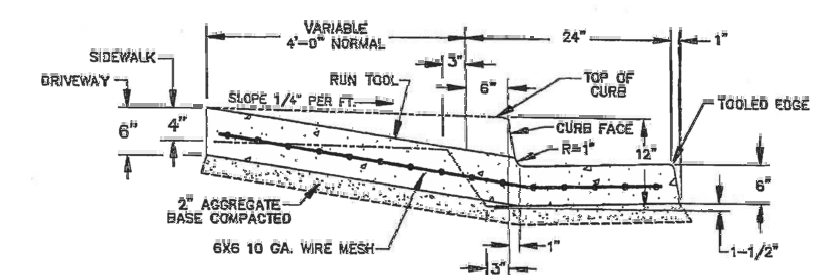
- NOTES:
1. REMOVE APPROXIMATE 400 LF (E) CURB, GUTTER, SIDEWALK, AND DRIVEWAY. REPLACE WITH NEW 10' WIDE SIDEWALK, CURB, GUTTER, AND DRIVEWAY ON BOTH SIDES OF HUMBOLDT AVENUE BETWEEN ANCHOR AND BAY AND BETWEEN SPINNAKER AND BAY. ADJUST STREET GRADES AS NEEDED. NEW THERMOPLASTIC PAVEMENT MARKINGS AS DIRECTED.
 2. COORDINATE STAGING AREA WITH ON-GOING DOWNTOWN RESTROOM PROJECT.
 3. MAINTAIN ACCESS TO PARKING LOT 2 FOR THE DOWNTOWN RESTROOM PROJECT CONTRACTOR AND FOR PUBLIC ACCESS TO THE RELOCATED RESTROOM



PLAN



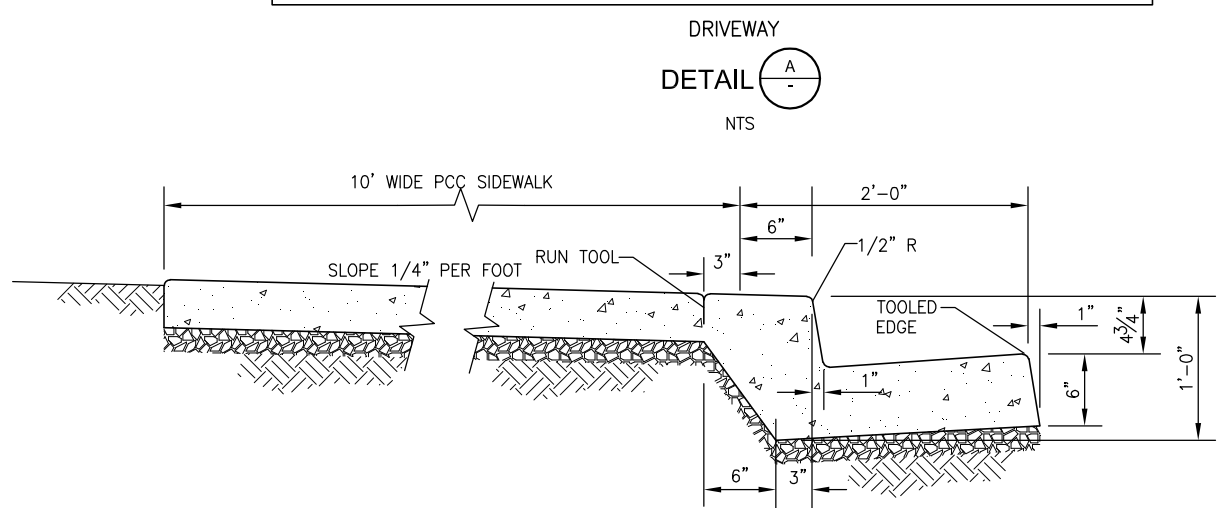
ELEVATION



SECTION A-A

GENERAL NOTES:

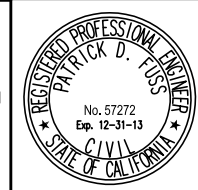
1. DRAW SCREED LATERALLY ACROSS SIDEWALK. KEEP SCREED PARALLEL TO CENTERLINE OF SIDEWALK.
2. WIDTH OF DRIVEWAY APPROACH: 2-WAY TRAFFIC 30' OR 36' ONE-WAY TRAFFIC 16'
3. TOOL SCORE LINE EVERY 4". LONGITUDINAL LINES TO SUIT CONDITIONS OR AS DIRECTED BY ENGINEER.
4. USE PIGMENTED SEALING COMPOUND FOR CURING.
5. WHEN DISTANCE BETWEEN DRIVEWAY FLARES IS LESS THAN 5' ELIMINATE ADJACENT FLARES AND CONSTRUCT AS COMMON DRIVEWAY.



DRIVEWAY
 DETAIL A
 NTS



SIDEWALK
 DETAIL B
 NTS



SUBMITTED: *[Signature]*
 DATE: 9/11/12
 APPROVED: _____
 DATE: _____

THIS LINE IS 1 INCH
 AT FULL SCALE
 IF NOT SCALE ACCORDINGLY

SCALE: AS SHOWN
 DRAWN BY: ALN
 DESIGNED BY: TTT
 PROJ. MGR.: PDF

No.	ZONE	REVISIONS	BY	DATE

WEST YOST ASSOCIATES
 Consulting Engineers

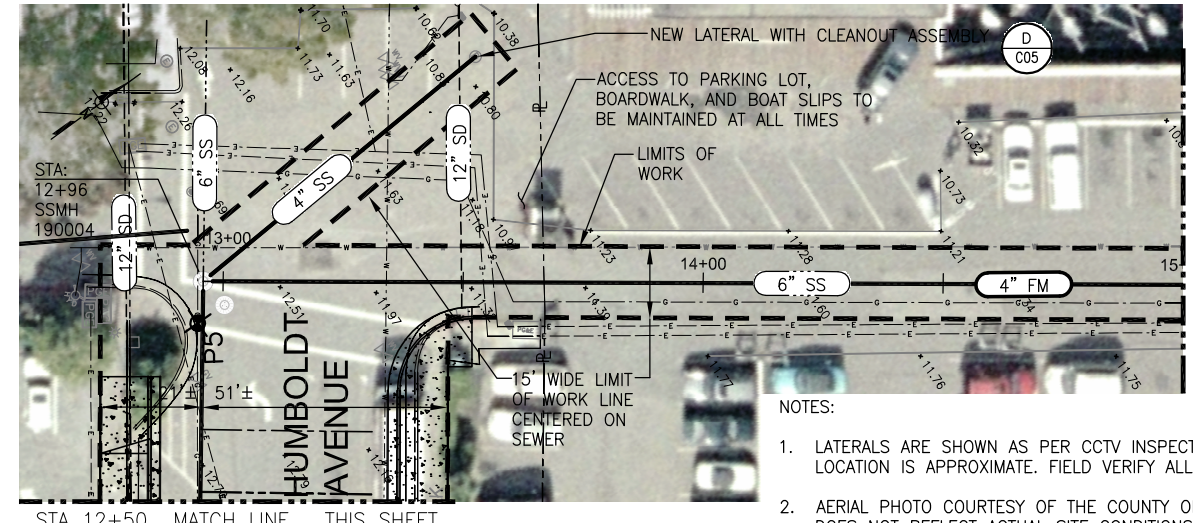
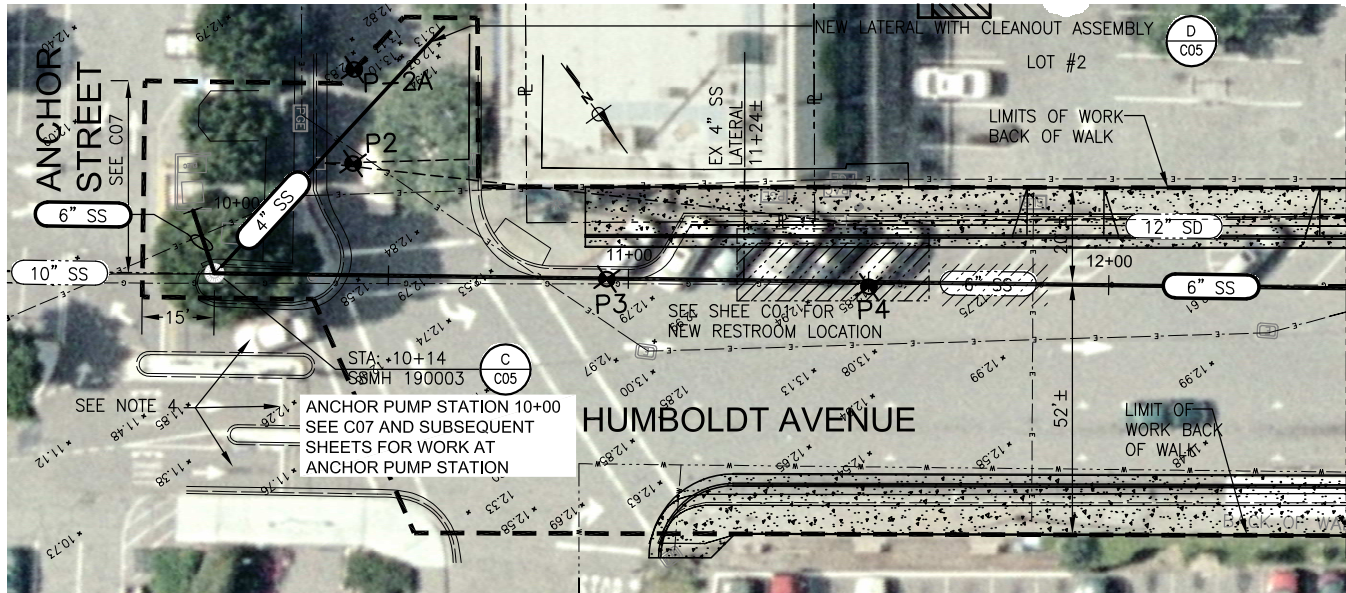
2020 Research Park Drive
 Suite 100
 Davis, California 95618
 (530) 756-5905
 FAX (530) 756-5991



CITY OF SAUSALITO PRIORITY 1 SEWER REPLACEMENT PROJECT 1B

HUMBOLDT AVENUE IMPROVEMENT PLAN AND DETAILS

JOB NUMBER 454-02-09-02
DRAWING NUMBER C01
SHEET NUMBER 4 OF 28
REVISION



TRAFFIC CONTROL NOTES:

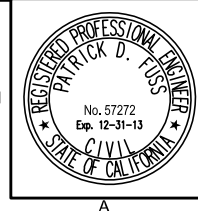
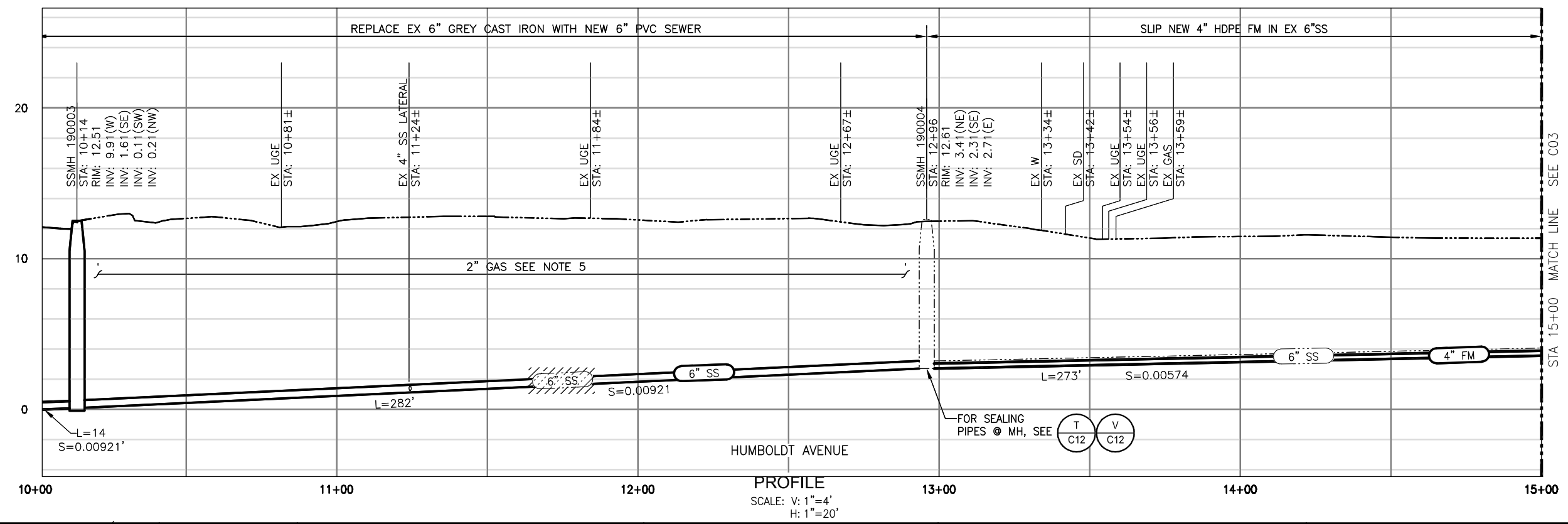
1. MAINTAIN AT LEAST ONE LANE OF TRAFFIC ON HUMBOLDT AVENUE AT ALL TIMES.
2. MAINTAIN AT LEAST ONE LANE OF TRAFFIC ON ANCHOR STREET BETWEEN 11AM AND 11PM.
3. PROVIDE "NO PARKING" SIGNS FOR HUMBOLDT AVENUE LISTING DATES AND TIMES THAT HUMBOLDT WILL BE AFFECTED 48 HOURS IN ADVANCE OF CONSTRUCTION.
4. MAINTAIN INGRESS AND EGRESS LANES TO PARKING LOT 1. LOT 1 TO REMAIN OPEN AT ALL TIMES.

**HUMBOLDT AVENUE
PLAN
SCALE: 1"=20'**

POTHOLE KEY								
POTHOLE #	CUT SIZE	ASPHALT	CONCRETE	SOIL	UTILITY	MATERIAL	DEPTH	COMMENTS
P1	1'X1'	4.5"		DIRT, SAND	2" GAS	STEEL	23.5"	
P2	1'X2.5'	8"		ROCK, BALLAST, DIRT	ELEC? FORCE MAIN?	CONCRETE	TOP: 22.5" BOTTOM 32.5"	HIT CONCRETE AT 22.5". OPENED HOLE 1'X2.5' AND STILL HIT CONCRETE AT 32.5"
P-2A	1'X1'	6"		GRAVEL	FORCE MAIN	DRY HOLE	DRY HOLE	NO LOCATE ON LINES. NO VISUAL DUE TO GRAVEL CAVING IN. CLEARED TO 43"
P3	1'X1'	4"	6"	DIRT, ROCKS	2" GAS	STEEL	17"	
P4	1'X1'	5"		DIRT, ROCKS	1" WATER SERVICE	STEEL	28"	
P5	1'X1'	5"		LOTS OF ROCKS, DIRT	2" GAS	STEEL	42"	

**HUMBOLDT AVENUE
PLAN
SCALE: 1"=20'**

- NOTES:**
1. LATERALS ARE SHOWN AS PER CCTV INSPECTION BY ROTO Rooter, LOCATION IS APPROXIMATE. FIELD VERIFY ALL LATERALS
 2. AERIAL PHOTO COURTESY OF THE COUNTY OF MARIN, 2006, AND DOES NOT REFLECT ACTUAL SITE CONDITIONS.
 3. SEWER SHALL REMAIN IN SERVICE AT ALL TIMES. CONTRACTOR SHALL CONTROL FLOW AND/OR BYPASS AS NECESSARY. SEE NOTE 12 ON G02.
 4. PROTECT EXISTING UTILITIES IN PLACE UNLESS NOTED OTHERWISE. EXISTING UTILITIES NOT SHOWN IN PROFILE SEE NOTE 7 ON G02.
 5. COORDINATE DIRECTLY WITH P.G.&E. REGARDING GAS MAIN ON HUMBOLDT AVENUE, INCLUDING BUT NOT LIMITED TO REQUEST FOR P.G.&E. FIELD OBSERVATION AND P.G.&E. CONTROL OF GAS FLOW. FIELD VERIFY LOCATION AND DEPTH. SUPPORT GAS LINE IN PLACE DURING CONSTRUCTION.
 6. MOVE RESTROOMS TO LOT#2 SEE C01 AND SPECIFICATIONS.
 7. REMOVE EXISTING CURB GUTTER AND SIDEWALK AS NECESSARY (APPROX 20 FT.) RESTORE ORIGINAL CONDITIONS OR BETTER UPON COMPLETION OF PROJECT.

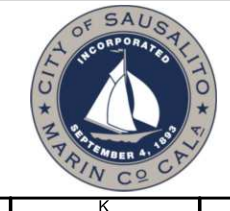


SUBMITTED: *[Signature]*
DATE: 9/11/12
APPROVED: _____
DATE: _____

THIS LINE IS 1 INCH
AT FULL SCALE
IF NOT SCALE ACCORDINGLY
SCALE: AS SHOWN
DRAWN BY: ALN
DESIGNED BY: TTT
PROJ. MGR.: PDF

No.	ZONE	REVISIONS	BY	DATE

WEST YOST ASSOCIATES
Consulting Engineers
2020 Research Park Drive
Suite 100
Davis, California 95618
(530) 756-5905
FAX (530) 756-5991



**CITY OF SAUSALITO PRIORITY 1 SEWER
REPLACEMENT PROJECT 1B
HUMBOLDT AVENUE
STA 10+00 TO 15+00
PLAN & PROFILE**

JOB NUMBER 454-02-09-02
DRAWING NUMBER C02
SHEET NUMBER 5 OF 28
REVISION

N:\Clients\454 City of Sausalito\02-09-02 Priority 1 Sewer Replacement Design\CAD\Design\Project 1B\45402-0902-C01-C04.dwg 9-11-12 03:40:18 PM onichols