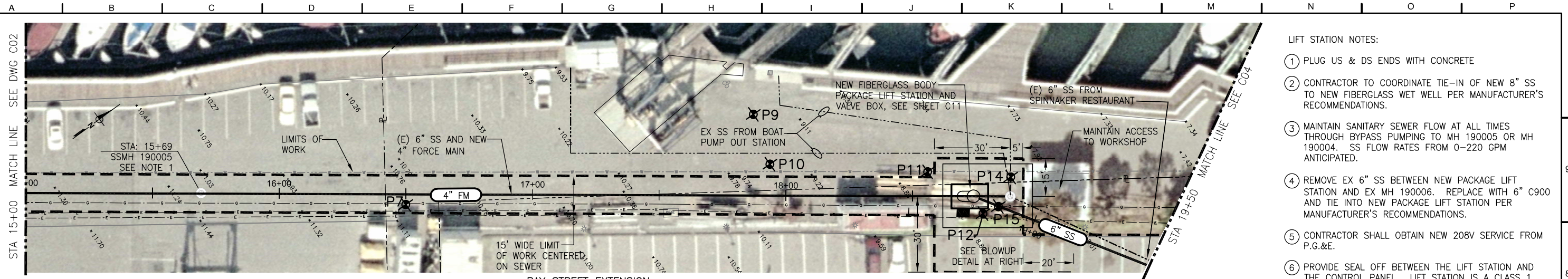


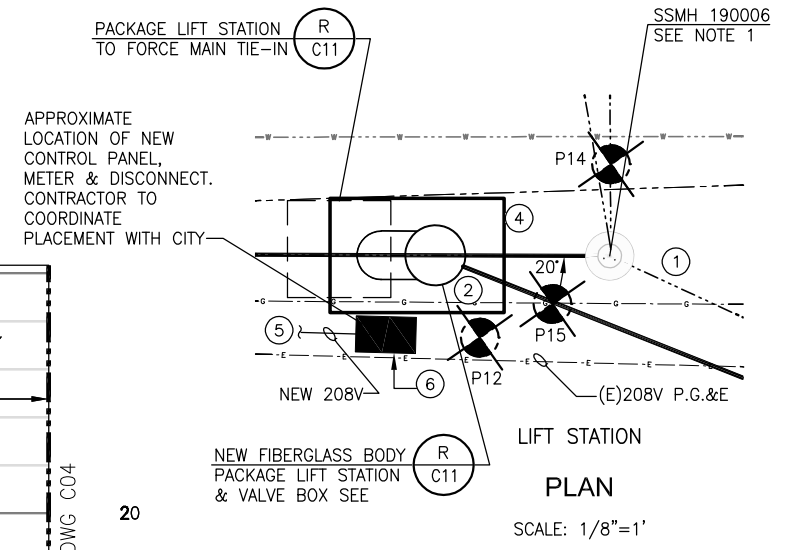
N:\Clients\454 City of Sausalito\02-09-02 Priority 1 Sewer Replacement Design\CAD\Design\Project 1B\45402-0902-C01-C04.dwg 9-11-12 03:39:35 PM omichols



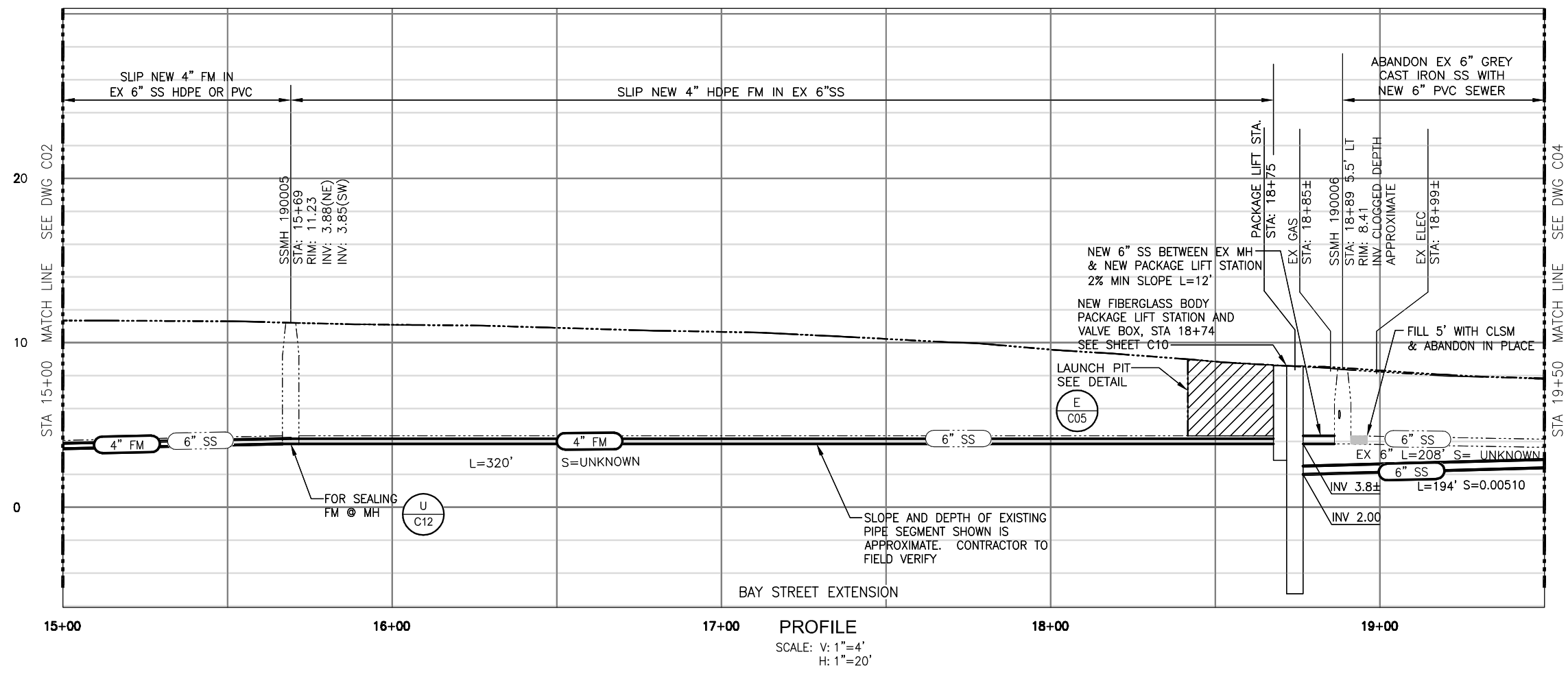
- LIFT STATION NOTES:
- 1 PLUG US & DS ENDS WITH CONCRETE
 - 2 CONTRACTOR TO COORDINATE TIE-IN OF NEW 8" SS TO NEW FIBERGLASS WET WELL PER MANUFACTURER'S RECOMMENDATIONS.
 - 3 MAINTAIN SANITARY SEWER FLOW AT ALL TIMES THROUGH BYPASS PUMPING TO MH 190005 OR MH 190004. SS FLOW RATES FROM 0-220 GPM ANTICIPATED.
 - 4 REMOVE EX 6" SS BETWEEN NEW PACKAGE LIFT STATION AND EX MH 190006. REPLACE WITH 6" C900 AND TIE INTO NEW PACKAGE LIFT STATION PER MANUFACTURER'S RECOMMENDATIONS.
 - 5 CONTRACTOR SHALL OBTAIN NEW 208V SERVICE FROM P.G.&E.
 - 6 PROVIDE SEAL OFF BETWEEN THE LIFT STATION AND THE CONTROL PANEL. LIFT STATION IS A CLASS 1, DIVI SPACE

POTHOLE KEY								
POTHOLE #	CUT SIZE	ASPHALT	CONCRETE	SOIL	UTILITY	MATERIAL	DEPTH	COMMENTS
P7	1'X1'	6"		CLAY, BASE ROCK	4" ATT	PVC	42"	4" ATT WAS UNDER WOOD
P9	1'X1'	5"		DIRT, ROCKS, BASE ROCK	4" SANITARY SEWER	WOOD PLANK	40"	WOOD PLANK 4" PVC SANITARY SEWER RUNNING UNDER WOOD
P10	12"	10"		SLURRY, HARD CLAY LOOSE PEBBLES	2" UNKNOWN CONDUITS	PVC	19"	NOT CLEAR IF WE FOUND ATT OR ELEC ON LOCATION. ONLY FOUND 1 CONDUIT WENT DOWN 5'. PER ANDREW (CITY INSPECTOR)
P11	1'X1'	6"		BASE ROCK	COMM ELEC	CONCRETE CAP	9.5"	HIT GROUND WATER

POTHOLE KEY								
POTHOLE #	CUT SIZE	ASPHALT	CONCRETE	SOIL	UTILITY	MATERIAL	DEPTH	COMMENTS
P12	12"	2"		DIRT, AC DIRT, GROUND WATER	ATT WOOD DUCT SOUTH EDGE	WOOD	39"	
P14	1'X1'	4"		BASE ROCK	4" SANITARY SEWER	PVC	23"	
P15	1'X1'	3"		DIRT, AC HARD CLAY, GROUND WATER	2" GAS	STEEL WITH BLACK WRAP	-	NO LOCATE ATT LINE. CLEARED TO 5' DEEP. FELT POSSIBLE 2" GAS AT 29"



- NOTES:
1. PRESSURE WASH SSMH 190006 PRIOR TO STARTING CONSTRUCTION.
 2. LOCATION OF SS SHOWN FROM BOAT PUMP OUT IS APPROXIMATE. CONTRACTOR TO FIELD VERIFY. VERTICAL DEPTH APPROX. 22" FROM RIM.
 3. AERIAL PHOTO COURTESY OF THE COUNTY OF MARIN, 2006, AND DOES NOT REFLECT ACTUAL SITE CONDITIONS.
 4. SEWER SHALL REMAIN IN SERVICE AT ALL TIMES. CONTRACTOR SHALL CONTROL FLOW AND/OR BYPASS AS NECESSARY.
 5. PROTECT EXISTING UTILITIES IN PLACE UNLESS NOTED OTHERWISE.
 6. VIBRATION AT LIMITS OF WORK SHALL NOT EXCEED 1 INCH PER SEC. WORK PLAN AND MONITORING SHALL BE SUBMITTED TO THE CITY FOR REVIEW AND APPROVAL



SUBMITTED: *[Signature]*
 DATE: 9/11/12
 APPROVED: _____
 DATE: _____

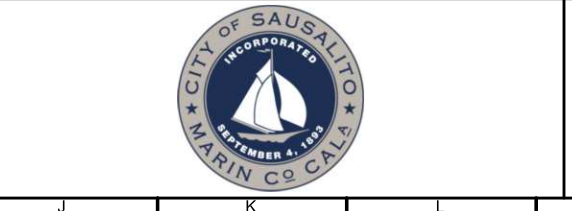
THIS LINE IS 1 INCH AT FULL SCALE IF NOT SCALE ACCORDINGLY

SCALE: AS SHOWN
 DRAWN BY: ALN
 DESIGNED BY: KSB/HLP
 PROJ. MGR.: PDF

No.	ZONE	REVISIONS	BY	DATE

WEST YOST ASSOCIATES
 Consulting Engineers

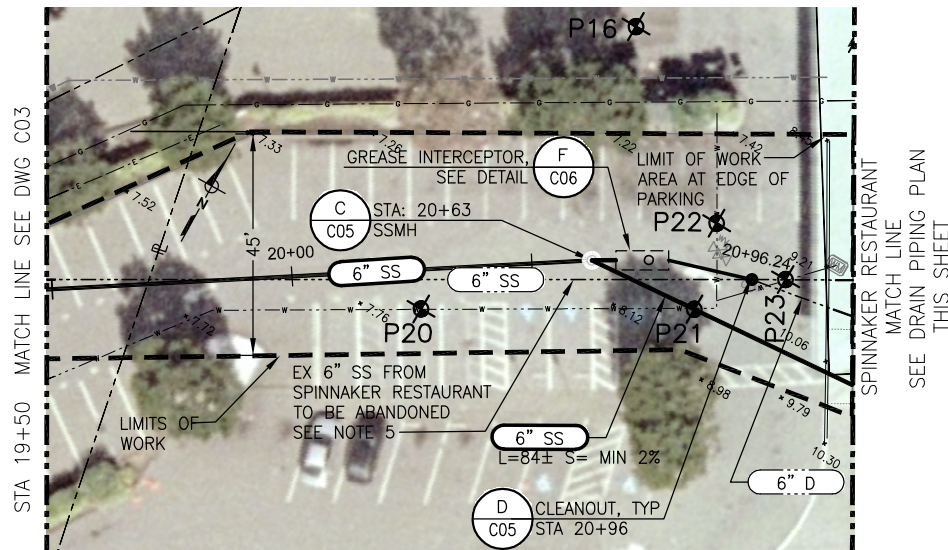
2020 Research Park Drive
 Suite 100
 Davis, California 95618
 (530) 756-5905
 FAX (530) 756-5991



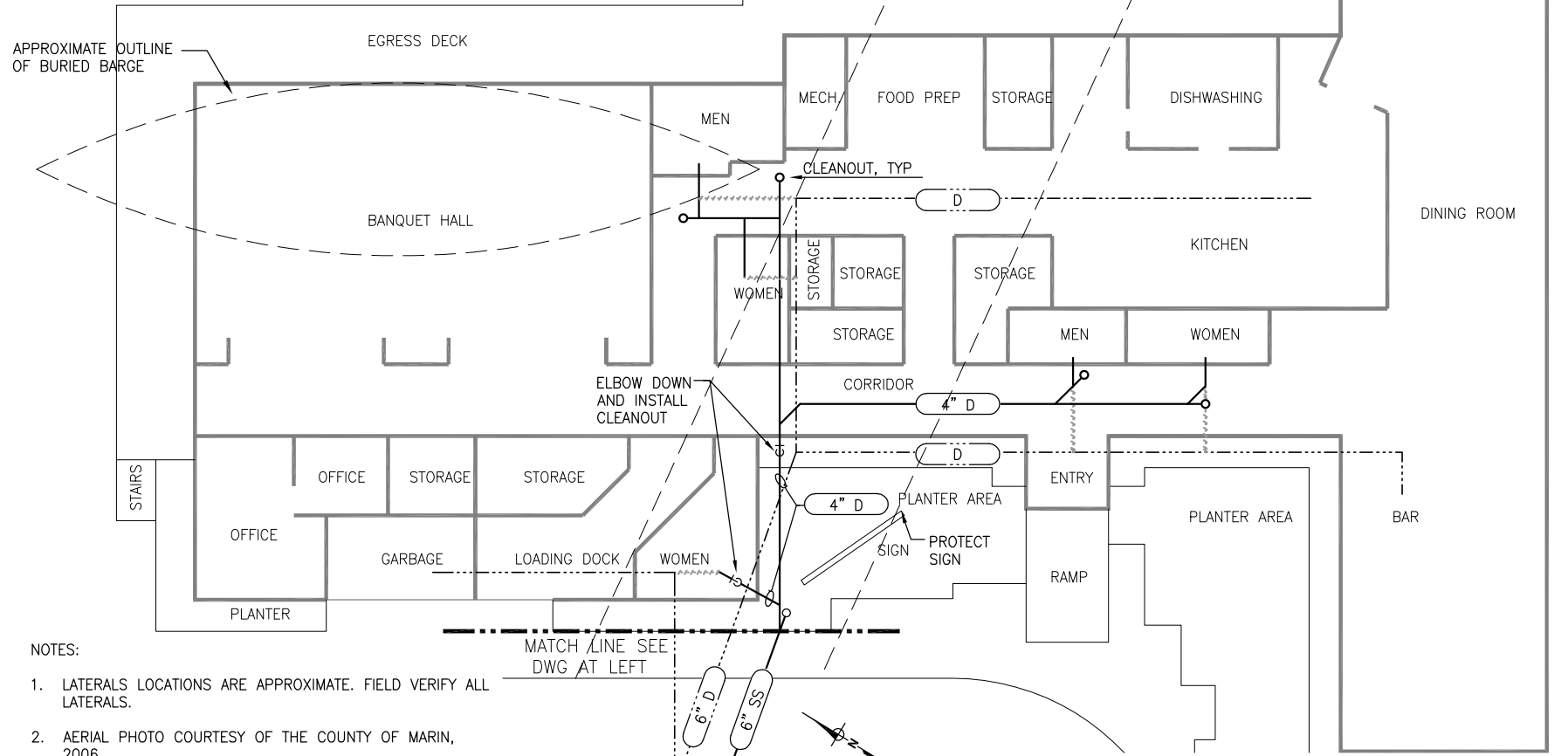
CITY OF SAUSALITO PRIORITY 1 SEWER REPLACEMENT PROJECT 1B
 BAY STREET EXTENSION
 STA 15+00 TO 19+50
 PLAN & PROFILE

JOB NUMBER: 454-02-09-02
 DRAWING NUMBER: C03
 SHEET NUMBER: 6 OF 28
 REVISION: _____

POTHOLE KEY								
POTHOLE #	CUT SIZE	ASPHALT	CONCRETE	SOIL	UTILITY	MATERIAL	DEPTH	COMMENTS
P16	1'X1'	4"		5" SLURRY, SAND	1" ATT CONDUIT	PVC	22"	
P20	1'X1'	8"		DIRT, AC, BASE ROCK	6" WATER	STEEL WITH WHITE WRAP	36"	
P21	12"	3"		DIRT, AC, BASEROCK	6" WATER	STEEL WITH WHITE WRAP	42"	
P22	12"	2"		ATT DUCT	ATT DUCT	CLAY	TOP: 7" BOTTOM: 19"	NO ELEC MIGHT BE UNDERNEATH DUCT
P23	1'X2'	4"		DIRT, SLURRY, AC DIRT	RED CONC. SLURRY Y CAP (N SIDE), SLURRY BELOW	CLAY	36"	NO ELEC, OR SANITARY SEWER BUT THERE AT 41" ON MARK. PER ANDREW (CITY INSPECTOR), SAID THAT'S OK AND THAT THE ELEC MIGHT BE UNDERNEATH CONCRETE CAP AND NOT TO GO THRU SLURRY BECAUSE SANITARY SEWER MIGHT BE UNDER SLURRY



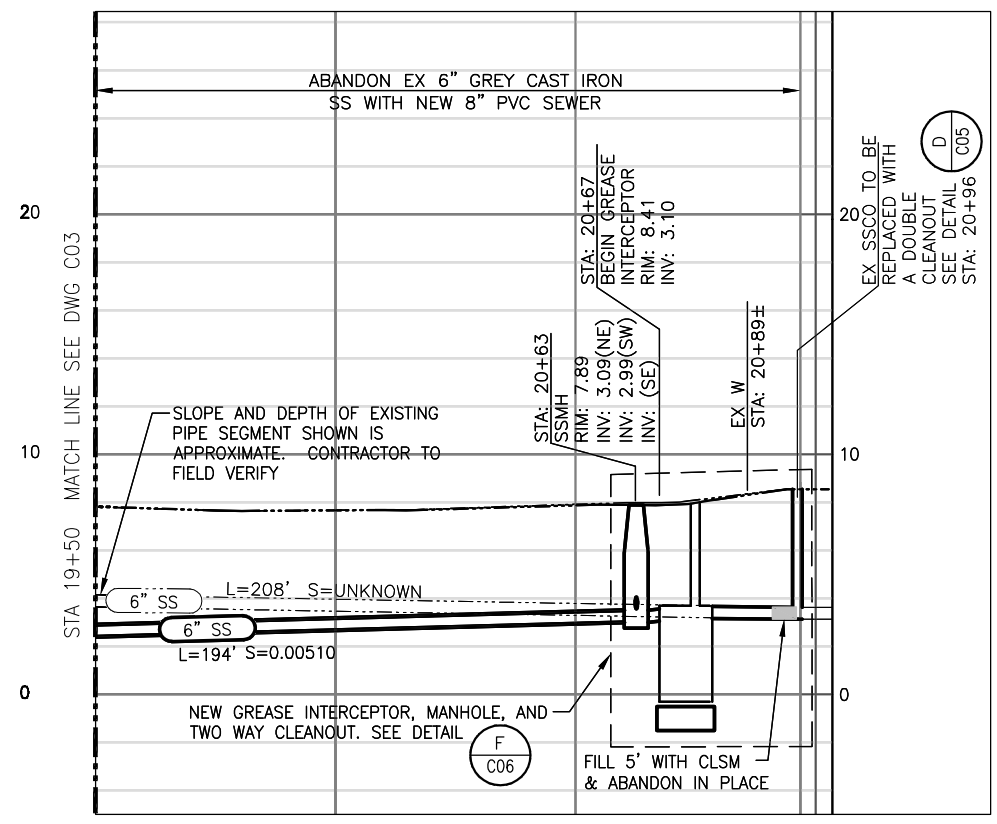
SPINNAKER RESTAURANT
PLAN
SCALE: 1"=20'



SPINNAKER RESTAURANT
DRAIN PIPING PLAN SCHEMATIC
SCALE: NOT TO SCALE

- NOTES:
- LATERALS LOCATIONS ARE APPROXIMATE. FIELD VERIFY ALL LATERALS.
 - AERIAL PHOTO COURTESY OF THE COUNTY OF MARIN, 2006.
 - SEWER SHALL REMAIN IN SERVICE AT ALL TIMES. CONTRACTOR SHALL CONTROL FLOW AND/OR BYPASS AS NECESSARY.
 - PROTECT EXISTING UTILITIES IN PLACE UNLESS NOTED OTHERWISE.
 - PLUG US & DS END OF EXISTING 6" SANITARY SEWER WITH CONCRETE.
 - VIBRATION AT LIMITS OF WORK SHALL NOT EXCEED 1 INCH PER SEC. WORK PLAN AND MONITORING SHALL BE SUBMITTED TO THE CITY FOR REVIEW AND APPROVAL.
 - CITY WILL CONSIDER TRENCHLESS METHODS FOR CONSTRUCTING NEW SANITARY SEWER UPSTREAM OF STA 20+63. CONTRACTOR SHALL DEMONSTRATE ABILITY OF METHOD TO MAINTAIN ACCURATE LINE AND GRADE.
 - MAINTAIN ACCESS TO SPINNAKER RESTAURANT.

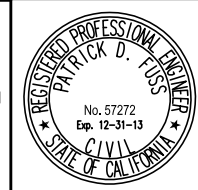
- NOTES:
- FIELD VERIFY EXISTING LINE LOCATIONS. EXISTING LINES SHOWN HEREIN ARE FOR ILLUSTRATIVE PURPOSES ONLY.
 - DRAIN LINE FOR THE KITCHEN, BAR, FOOD PREP, DISHWASHING, AND GARBAGE (IF NECESSARY) SHALL BE ROUTED TO THE NEW GREASE INTERCEPTOR.
 - DISCONNECT RESTROOMS FROM THE EXISTING DRAINS AND CONNECT THEM TO THE NEW DRAIN LINES. ROUTE NEW DRAINS TO MANHOLE AT STATION 20+63 AROUND NEW GREASE INTERCEPTOR.
 - NEW PIPING SHALL BE PVC PIPE. MINIMUM SLOPE FOR NEW DRAINS SHALL BE 2%.
 - NEW PIPING SHALL BE ROUTED BELOW ANY EXISTING PIPING WHERE THERE ARE CONFLICTS.
 - ONLY DRAIN PIPING SHOWN ON THIS PLAN.
 - NEW DRAIN LINES ARE SHOWN SCHEMATICALLY. SUBMIT A PLAN SHOWING PROPOSED LOCATIONS OF NEW DRAINS PRIOR TO WORK ON THE RESTAURANT.



SPINNAKER RESTAURANT
PROFILE
SCALE: V: 1"=4'
H: 1"=20'

- NOTES:
- STATION 20+67 = N 2141262 E 5990536

N:\Clients\454 City of Sausalito\02-09-02 Priority 1 Sewer Replacement Design\CAD\Design\Project 1B\45402-0902-C01-C04.dwg 9-11-12 04:29:07 PM onichols



SUBMITTED: *[Signature]*
DATE: 9/11/12
APPROVED: _____
DATE: _____

THIS LINE IS 1 INCH AT FULL SCALE IF NOT SCALE ACCORDINGLY
SCALE: AS SHOWN
DRAWN BY: ALN
DESIGNED BY: HLP
PROJ. MGR.: PDF

No.	ZONE	REVISIONS	BY	DATE

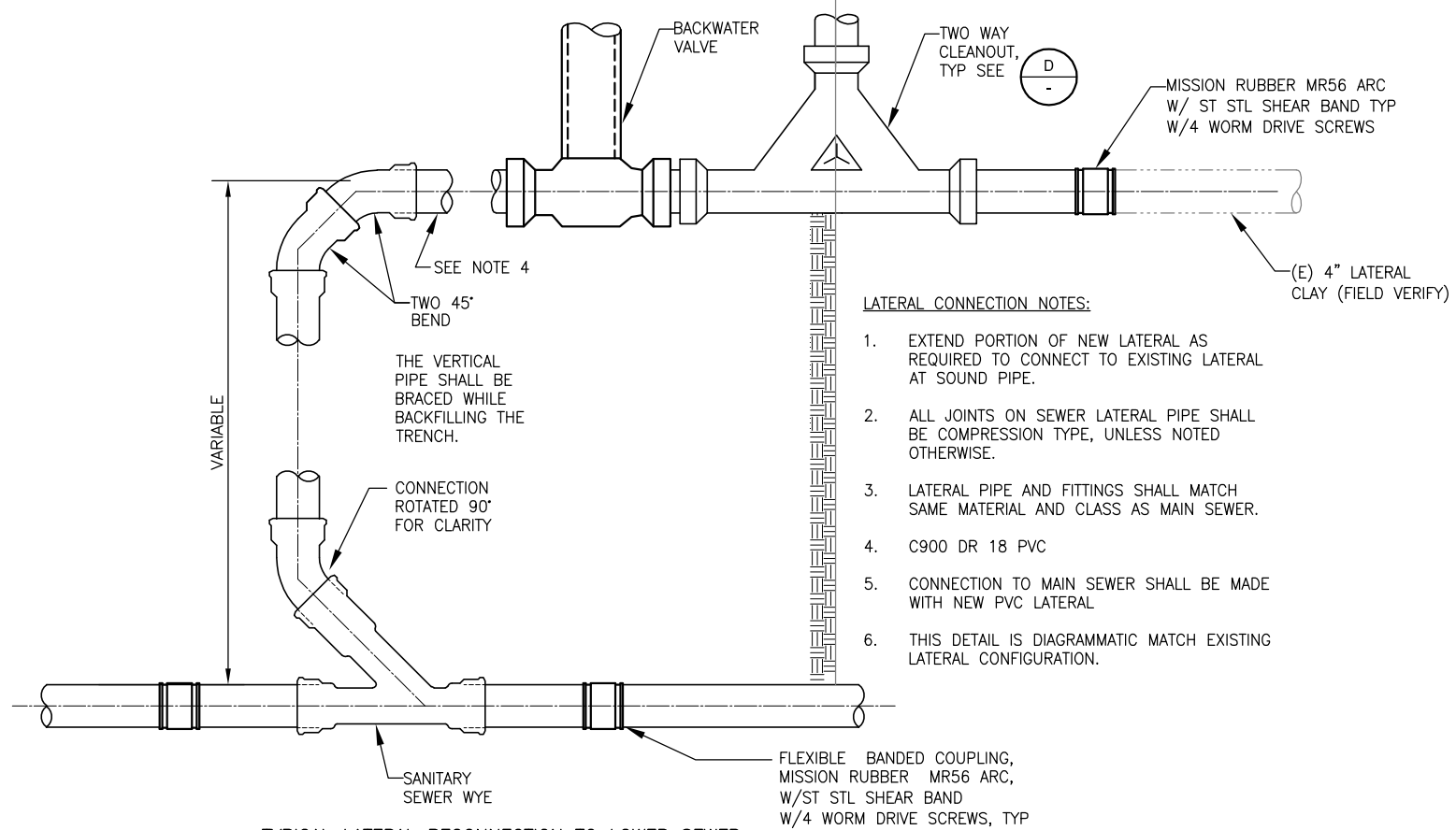
WEST YOST ASSOCIATES
Consulting Engineers
2020 Research Park Drive
Suite 100
Davis, California 95618
(530) 756-5905
FAX (530) 756-5991



CITY OF SAUSALITO PRIORITY 1 SEWER REPLACEMENT PROJECT 1B
SPINNAKER RESTAURANT
STA 19+50 TO 20+96±
PLAN & PROFILE

JOB NUMBER 454-02-09-02
DRAWING NUMBER C04
SHEET NUMBER 7 OF 28
REVISION

N:\Clients\454 City of Sausalito\02-09-02 Priority 1 Sewer Replacement Design\CAD\Design\Project 1B\45402-0902-C05-C06.dwg 9-11-12 03:38:23 PM onichols



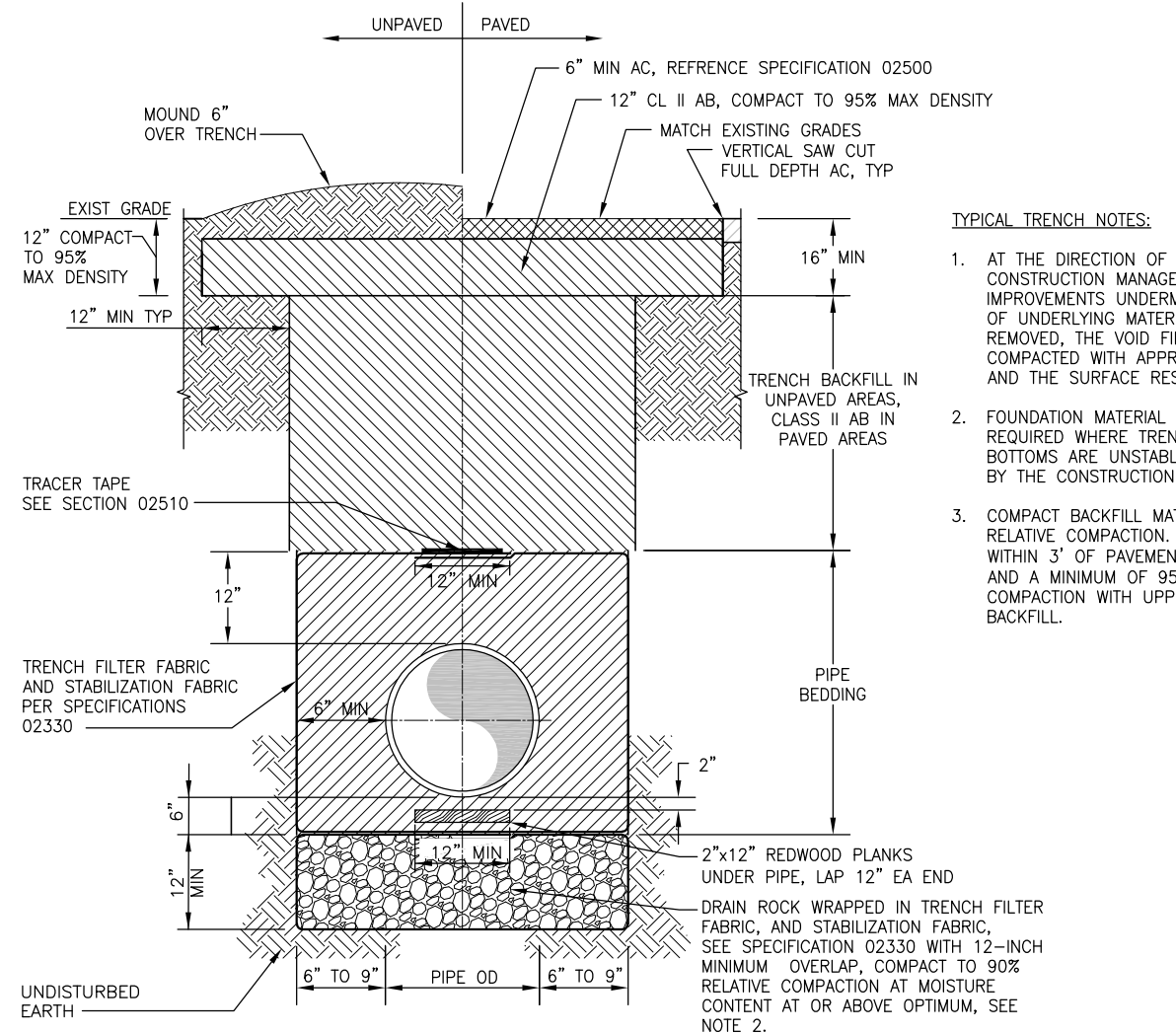
TYPICAL LATERAL RECONNECTION TO LOWER SEWER

DETAIL A VAR

NOT TO SCALE

LATERAL CONNECTION NOTES:

1. EXTEND PORTION OF NEW LATERAL AS REQUIRED TO CONNECT TO EXISTING LATERAL AT SOUND PIPE.
2. ALL JOINTS ON SEWER LATERAL PIPE SHALL BE COMPRESSION TYPE, UNLESS NOTED OTHERWISE.
3. LATERAL PIPE AND FITTINGS SHALL MATCH SAME MATERIAL AND CLASS AS MAIN SEWER.
4. C900 DR 18 PVC
5. CONNECTION TO MAIN SEWER SHALL BE MADE WITH NEW PVC LATERAL
6. THIS DETAIL IS DIAGRAMMATIC MATCH EXISTING LATERAL CONFIGURATION.



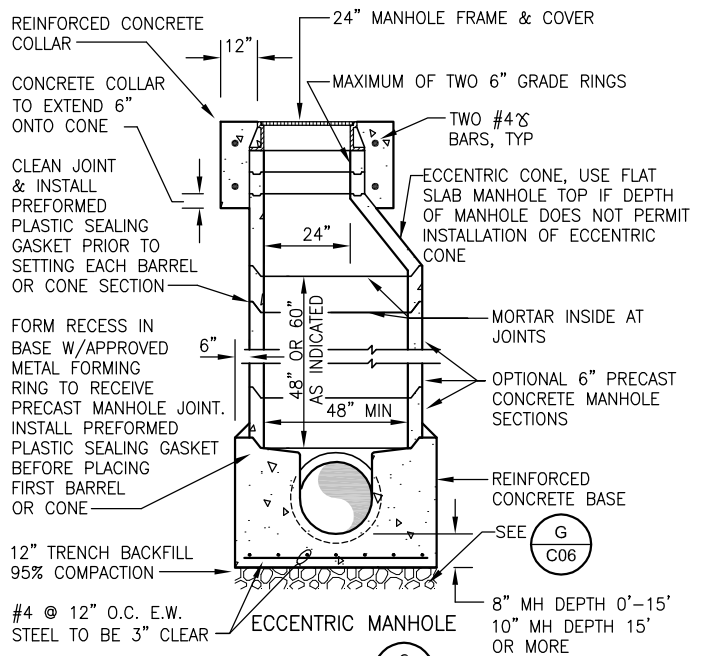
TRENCH SECTION

DETAIL B VAR

NOT TO SCALE

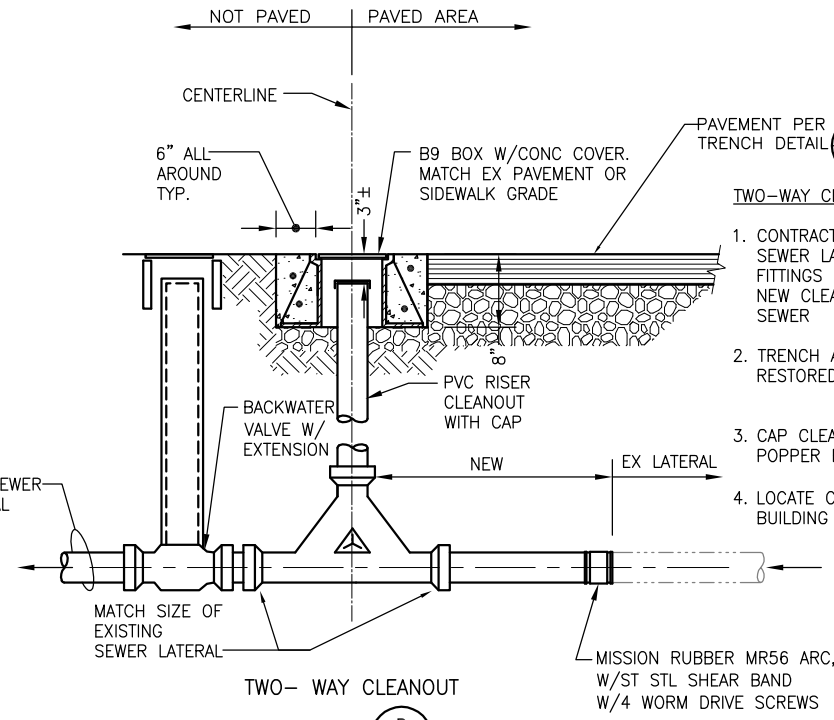
TYPICAL TRENCH NOTES:

1. AT THE DIRECTION OF THE CONSTRUCTION MANAGER, SURFACE IMPROVEMENTS UNDERMINED BY LOSS OF UNDERLYING MATERIAL SHALL BE REMOVED, THE VOID FILLED AND COMPACTED WITH APPROVED MATERIAL, AND THE SURFACE RESTORED.
2. FOUNDATION MATERIAL SHALL BE REQUIRED WHERE TRENCH OR PIT BOTTOMS ARE UNSTABLE, AS DIRECTED BY THE CONSTRUCTION MANAGER.
3. COMPACT BACKFILL MATERIAL TO 90% RELATIVE COMPACTION. COMPACT WITHIN 3' OF PAVEMENT SUBGRADE AND A MINIMUM OF 95% RELATIVE COMPACTION WITH UPPER 3 FEET OF BACKFILL.



DETAIL C VAR

NOT TO SCALE

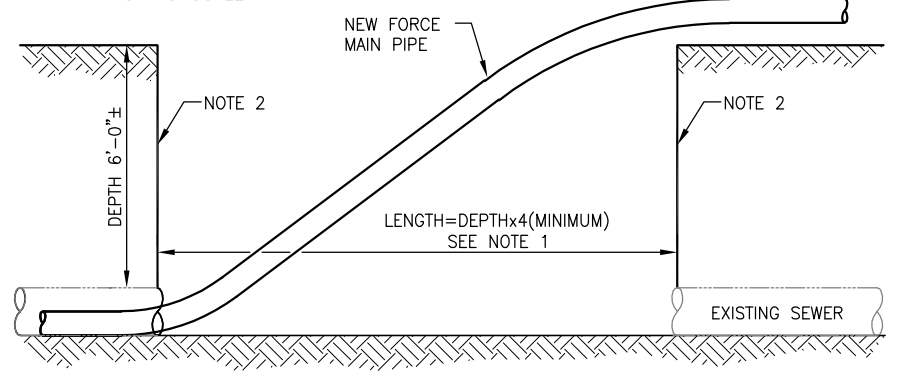


DETAIL D VAR

NOT TO SCALE

TWO-WAY CLEANOUT NOTES:

1. CONTRACTOR TO VERIFY SIZE OF EX SEWER LATERAL AND PROVIDE ALL FITTINGS NECESSARY TO INSTALL NEW CLEANOUT AND CONNECT NEW SEWER
2. TRENCH AND EXCAVATION TO BE RESTORED PER DETAIL B VAR
3. CAP CLEANOUT WITH SEWER POPPER RELIEF VALVE.
4. LOCATE CLEANOUT 18"-24" FROM BUILDING FOUNDATION



LAUNCH PIT DIMENSIONS	
DEPTH	LENGTH
6'	24'

FORCE MAIN LAUNCH PIT
DETAIL E C03
NOT TO SCALE

- NOTES:
1. CONSTRUCT LAUNCH PIT SUCH THAT PIPE MANUFACTURER'S RECOMMENDATIONS FOR MAXIMUM PIPE DEFLECTIONS ARE NOT EXCEEDED.
 2. PROVIDE SHORING AS NECESSARY



SUBMITTED: *[Signature]*
DATE: 9/11/12
APPROVED: _____
DATE: _____

THIS LINE IS 1 INCH AT FULL SCALE IF NOT SCALE ACCORDINGLY
SCALE: AS SHOWN
DRAWN BY: ALN
DESIGNED BY: PDF
PROJ. MGR.: PDF

No.	ZONE	REVISIONS	BY	DATE

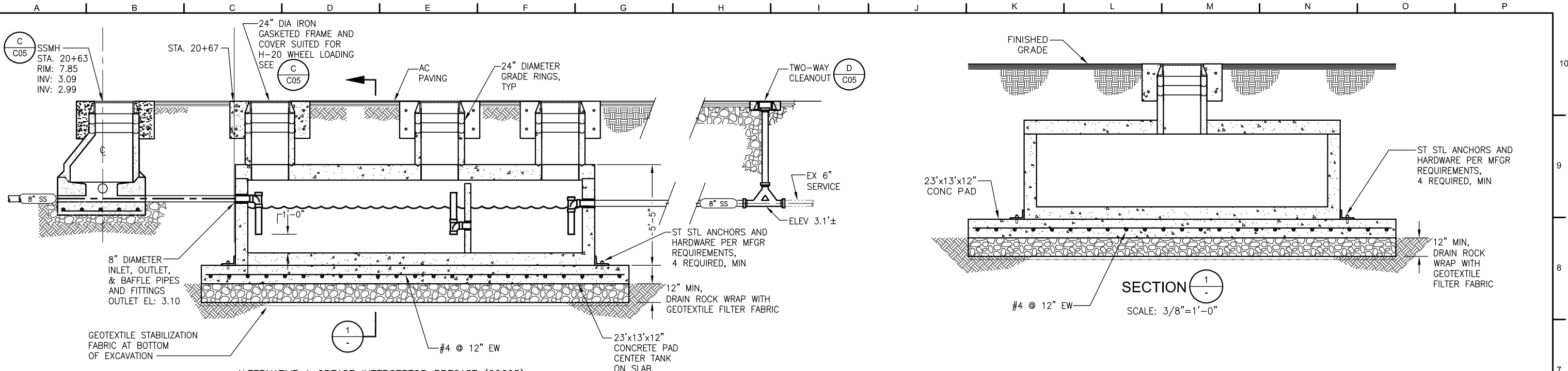
WEST YOST ASSOCIATES
Consulting Engineers
2020 Research Park Drive Suite 100
Davis, California 95618
(530) 756-5905
FAX (530) 756-5991



CITY OF SAUSALITO PRIORITY 1 SEWER REPLACEMENT PROJECT 1B
DETAILS 1

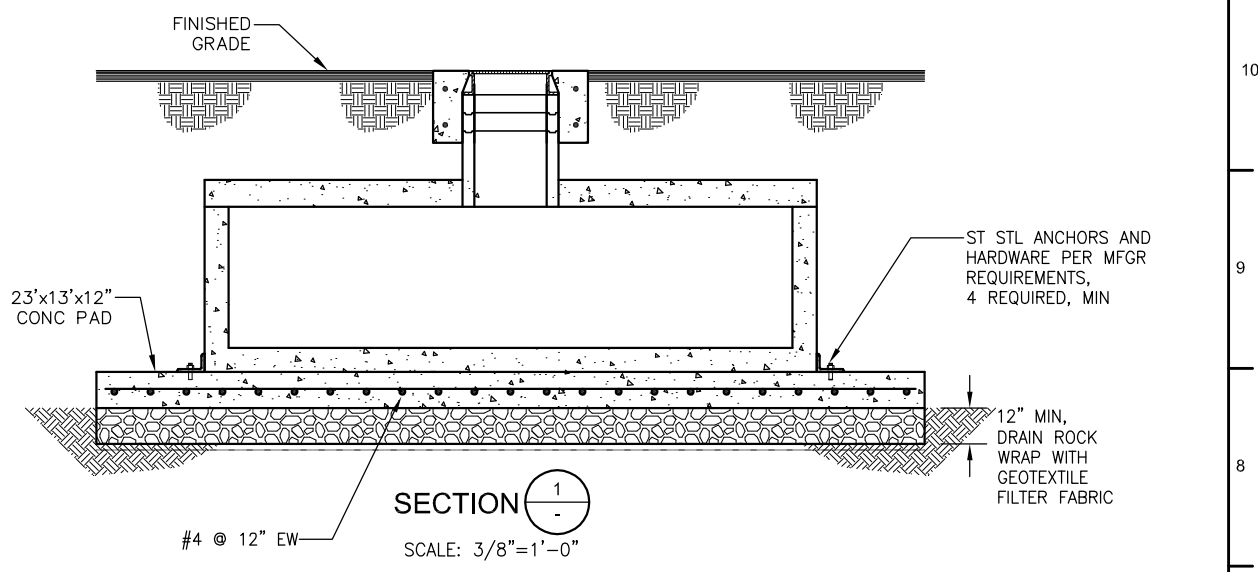
JOB NUMBER 454-02-09-02
DRAWING NUMBER C05
SHEET NUMBER 8 OF 28
REVISION

N:\Clients\454 City of Sausalito\02-09-02 Priority 1 Sewer Replacement\Design\CAD\Design\Project 1B\45402-0902-C05-C06.dwg 9-11-12 04:51:55 PM nichols

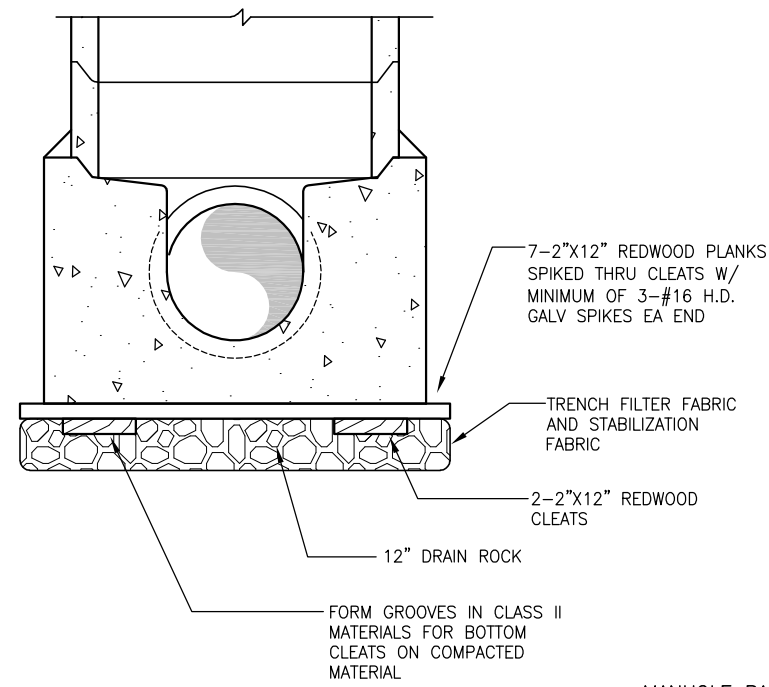


ALTERNATIVE A GREASE INTERCEPTOR PRECAST (02605)

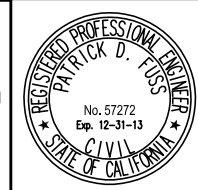
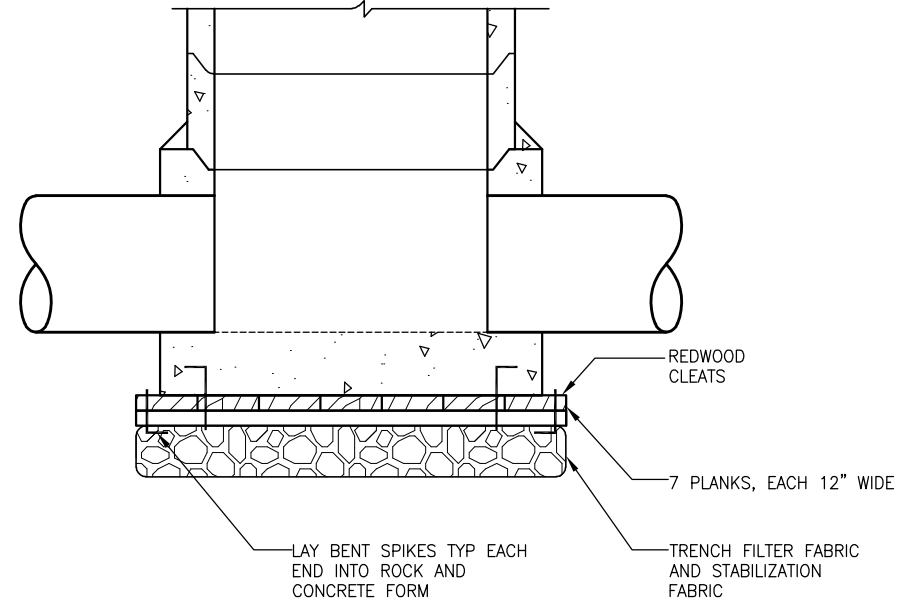
DETAIL $\frac{F}{C04}$
NOT TO SCALE



SECTION $\frac{1}{-}$
SCALE: $\frac{3}{8}'' = 1'-0''$



MANHOLE BASE IN BAY MUD
DETAIL $\frac{G}{C05}$
NOT TO SCALE



SUBMITTED: *[Signature]*
DATE: 9/11/12
APPROVED: _____
DATE: _____

THIS LINE IS 1 INCH
AT FULL SCALE
IF NOT SCALE ACCORDINGLY
SCALE: AS SHOWN
DRAWN BY: AN
DESIGNED BY: HLP
PROJ. MGR.: PDF

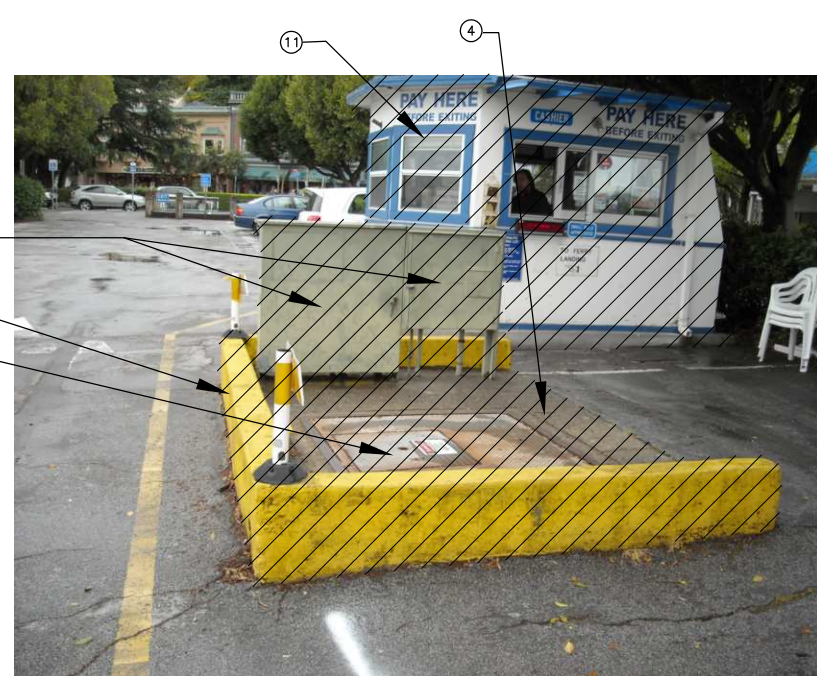
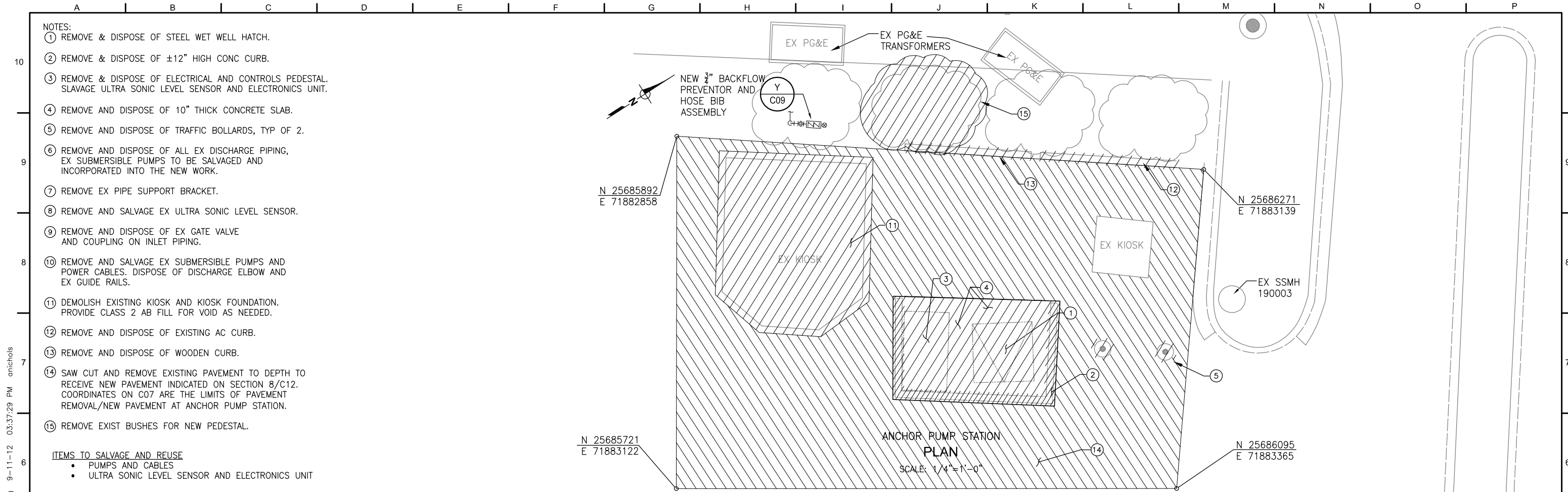
No.	ZONE	REVISIONS	BY	DATE

WEST YOST ASSOCIATES
Consulting Engineers
2020 Research Park Drive
Suite 100
Davis, California 95618
(530) 756-5905
FAX (530) 756-5991



CITY OF SAUSALITO PRIORITY 1 SEWER REPLACEMENT PROJECT 1B
DETAILS 2

JOB NUMBER: 454-02-09-02
DRAWING NUMBER: C06
SHEET NUMBER: 9 OF 28
REVISION:



ANCHOR PUMP STATION
LOOKING WEST

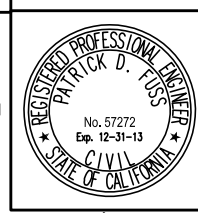


ANCHOR PUMP STATION
WETWELL INLET PIPING



ANCHOR PUMP STATION
WETWELL INTERNAL PIPING

N:\Clients\454 City of Sausalito\02-09-02 Priority 1 Sewer Replacement Design\CAD\Design\Project 1B\45402-0902-C07-C10.dwg 9-11-12 03:37:29 PM onichols



SUBMITTED: *[Signature]*
DATE: 9/11/12
APPROVED: _____
DATE: _____

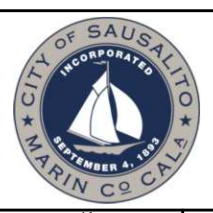
THIS LINE IS 1 INCH
AT FULL SCALE
IF NOT SCALE ACCORDINGLY

SCALE: AS SHOWN
DRAWN BY: ALN
DESIGNED BY: DL
PROJ. MGR.: PDF

No.	ZONE	REVISIONS	BY	DATE

WEST YOST ASSOCIATES
Consulting Engineers

2020 Research Park Drive
Suite 100
Davis, California 95618
(530) 756-5905
FAX (530) 756-5991



CITY OF SAUSALITO PRIORITY 1 SEWER REPLACEMENT PROJECT 1B

ANCHOR PUMP STATION DEMOLITION PLAN

JOB NUMBER 454-02-09-02
DRAWING NUMBER C07
SHEET NUMBER 10 OF 28
REVISION