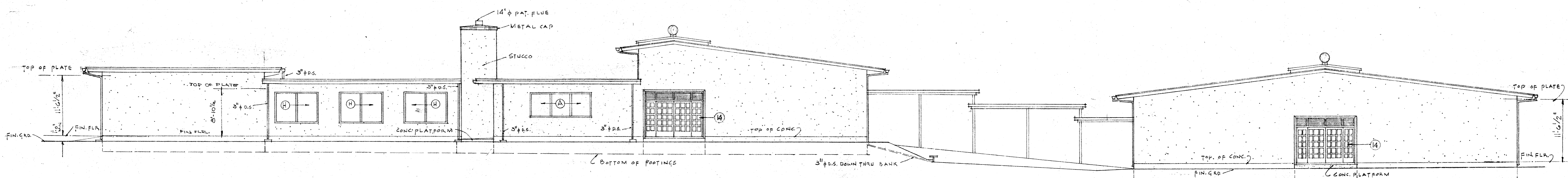
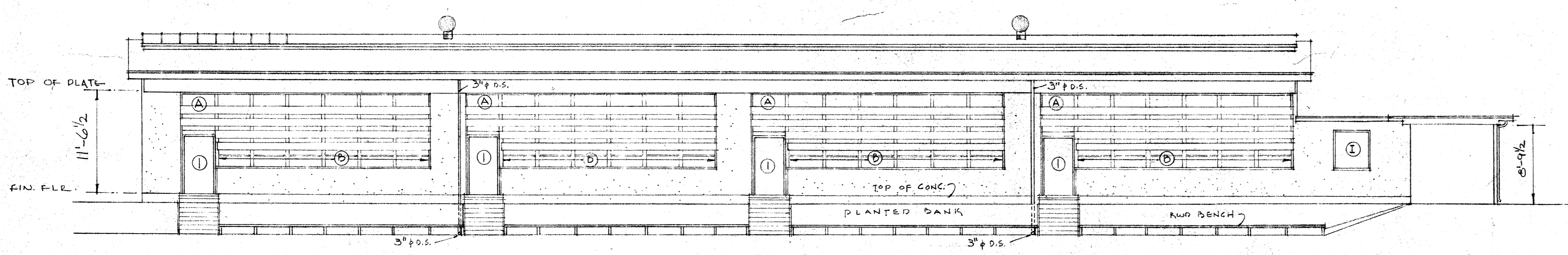


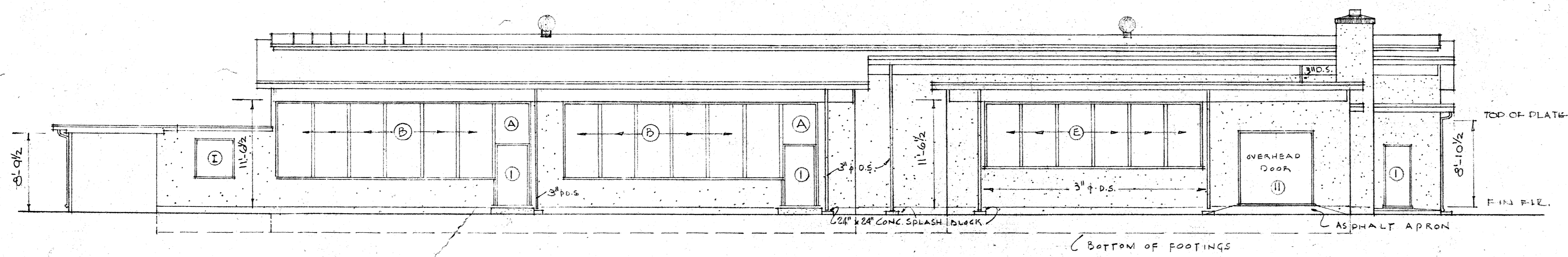
EAST ELEVATION 1/8" = 1'-0"



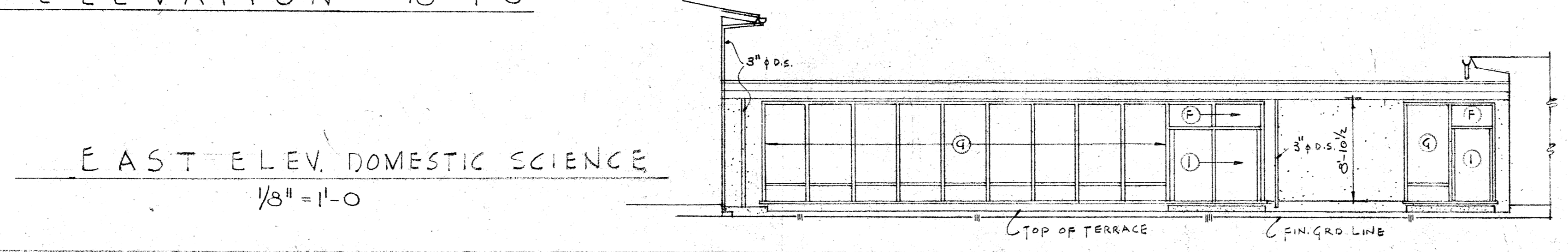
WEST ELEVATION 1/8" = 1'-0"



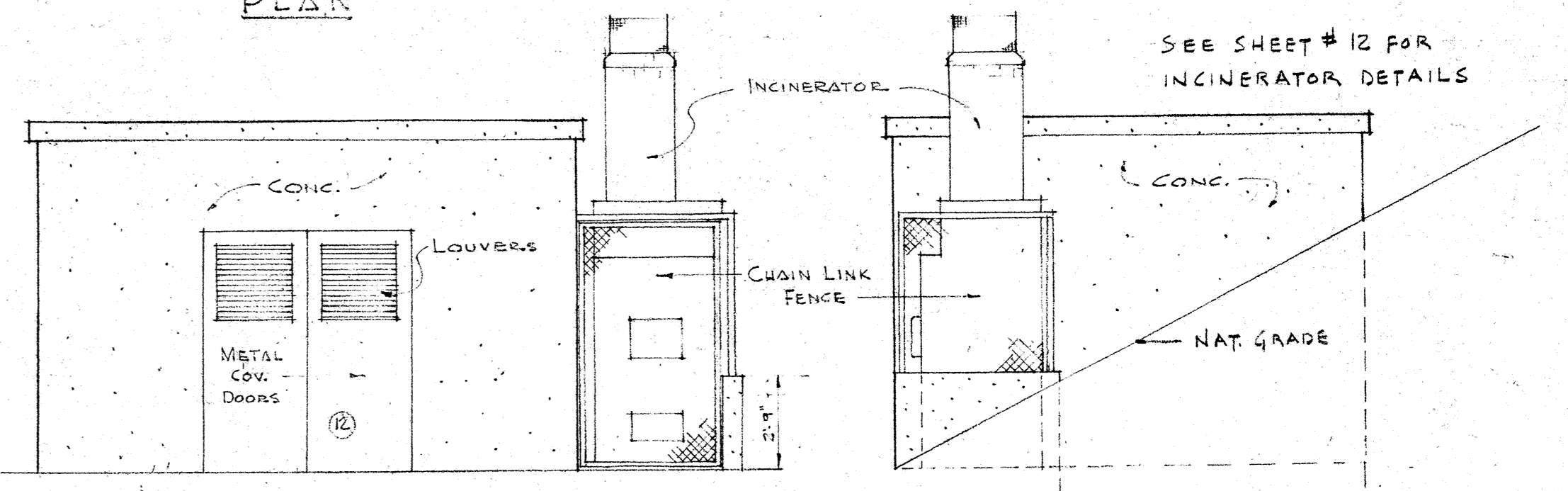
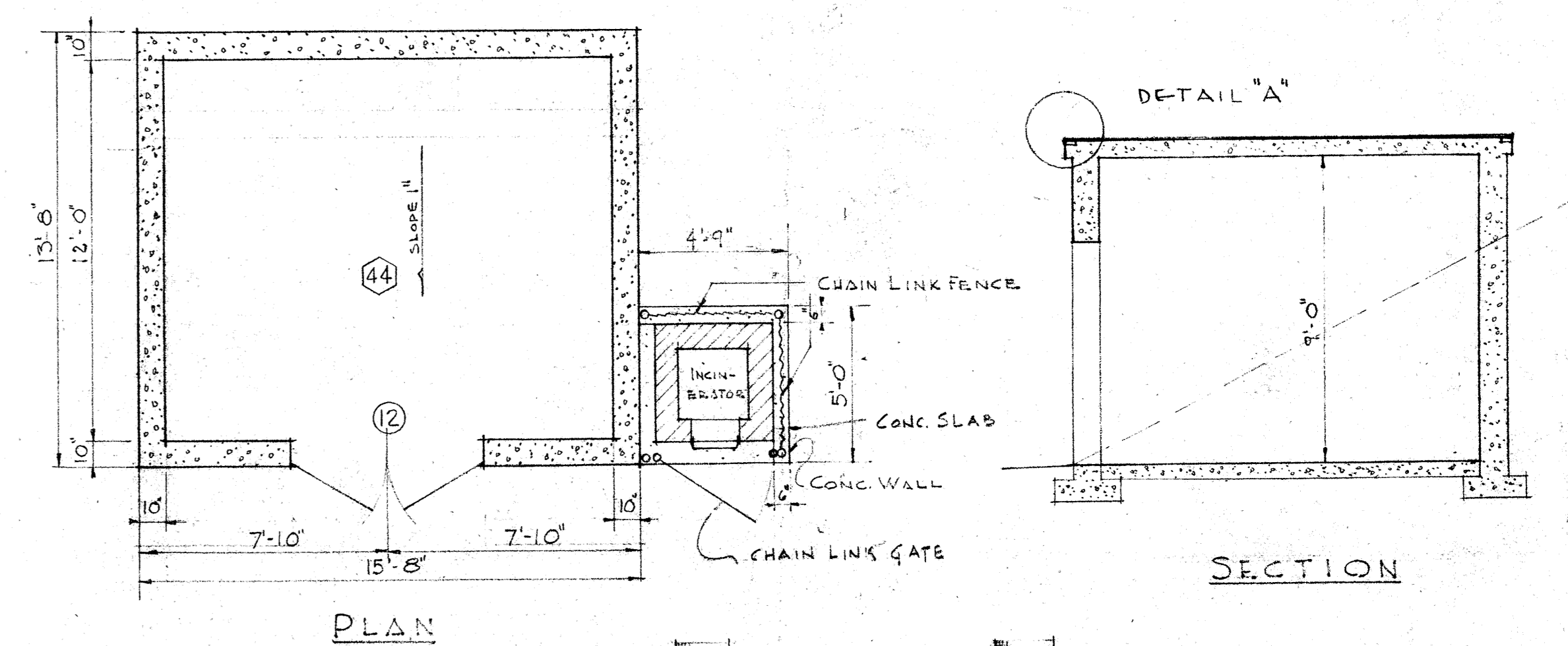
SOUTH ELEVATION 1/8" = 1'-0"



NORTH ELEVATION 1/8" = 1'-0"

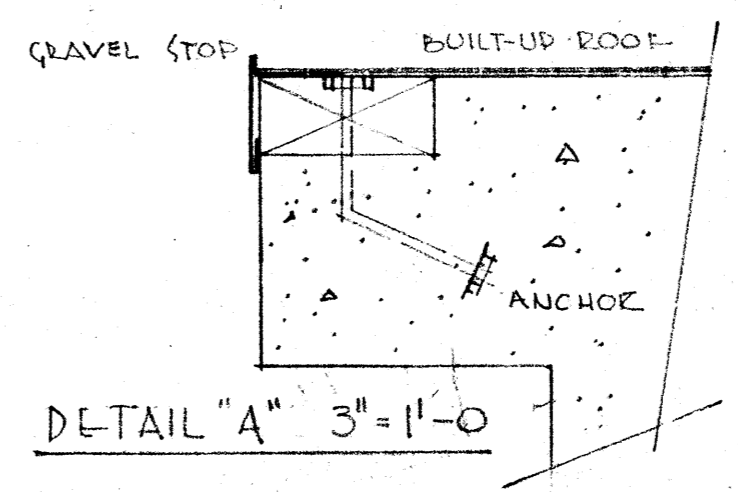


EAST ELEV. DOMESTIC SCIENCE 1/8" = 1'-0"



EAST ELEVATION TRANSFORMER VAULT SCALE 3/4" = 1'-0"

NORTH ELEVATION



DETAIL "A" 3" = 1'-0"

**ELEVATIONS**

SAUSALITO ELEMENTARY SCHOOL  
SAUSALITO, MARIN COUNTY, CALIF.  
ELEVATIONS

MASTEN AND HURD  
ARCHITECTS  
526 POWELL STREET - SAN FRANCISCO, CALIF.

DATE: AUG 6 1949  
SCALE: AS NOTED  
DRAWN BY: D.S.  
TRACED BY: D.S.

APPROVED: [Signature]  
COUNTY SUPERINTENDENT OF SCHOOLS

APPROVED: [Signature]  
REGISTERED CIVIL ENGINEER

STATE OF CALIFORNIA DEPARTMENT OF PUBLIC WORKS  
DIVISION OF ARCHITECTURE  
APPROVED: [Signature]  
AUG 8 - 49

7

Plate changed 11-8-49  
9-0  
15-8-49