

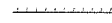



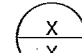
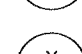
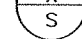
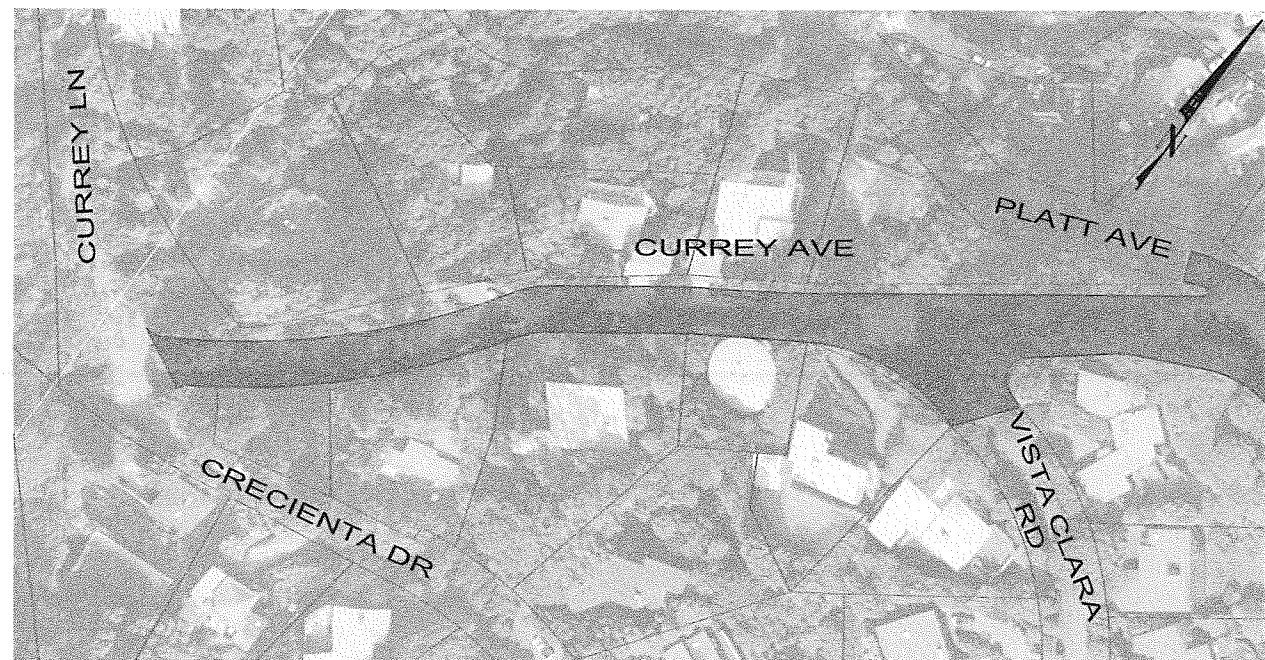


This document, together with the concepts and designs presented herein, is intended only for the specific purpose and client for which it was prepared. Please do not reproduce, reuse or in any way disseminate this document without written authorization and signature of Kimley-Horn and Associates, Inc. prior to without liability to Kimley-Horn and Associates, Inc.

LEGEND:

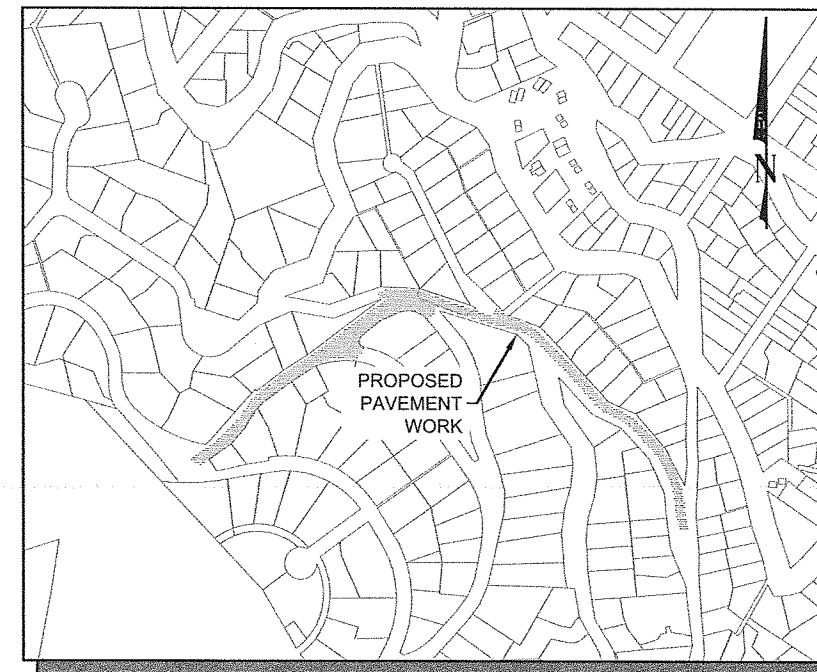
-  AREA OF TREATMENT
-  FAILURE REPAIR AREA
-  SAWCUT
-  BASE FAILURE REPAIR
SEE CD-02 FOR DETAILS
-  PCC FAILURE REPAIR
SEE CD-02 FOR DETAILS
-  PAVEMENT FAILURE REPAIR
SEE CD-02 FOR DETAILS
-  DETAIL NUMBER
-  SHEET NUMBER
-  STANDARD DETAIL NUMBER
CALTRANS STANDARD PLANS



MATCH LINE
SEE BOTTOM LEFT

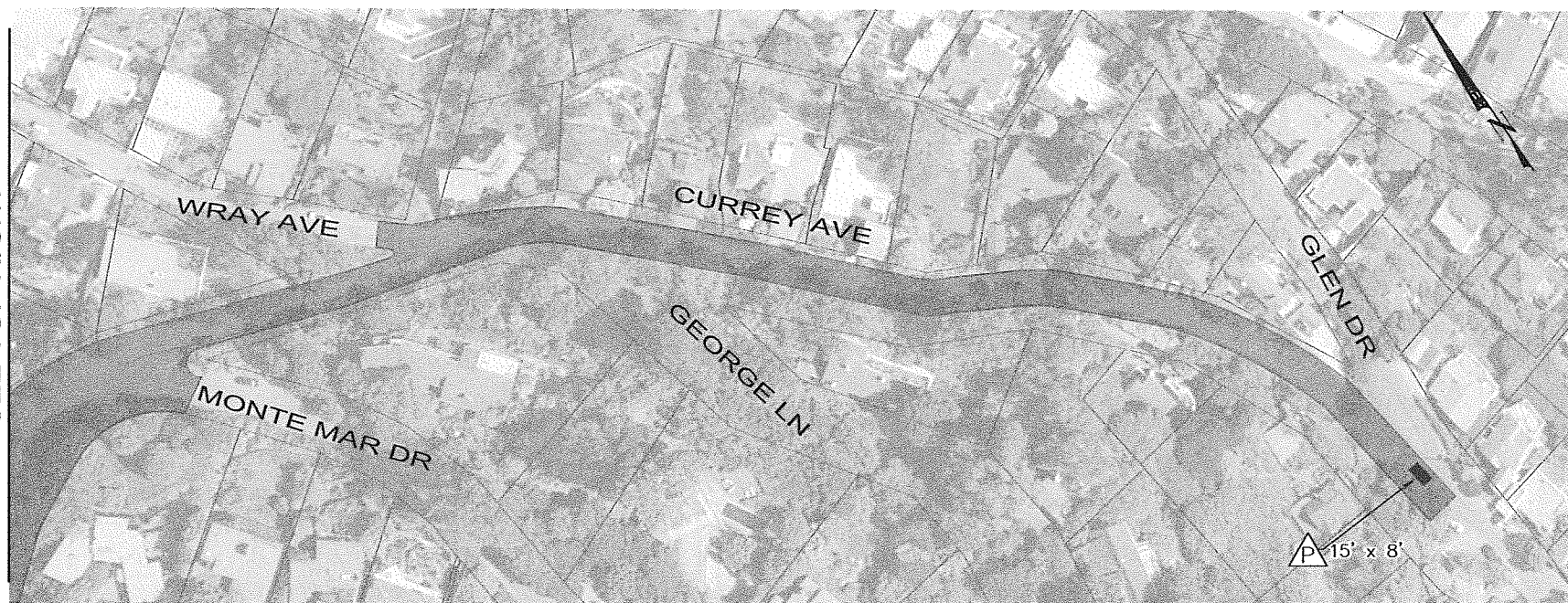
SECTION 17: CURREY AVE (CRECIENTA DR TO GLEN DR)
TREATMENT: CRACK SEAL & CAPE SEAL

NTS



LOCATION MAP

NTS



MATCH LINE
SEE TOP RIGHT

SECTION 17: CURREY AVE (CRECIENTA DR TO GLEN DR)
TREATMENT: CRACK SEAL & CAPE SEAL

NTS



No.	REVISIONS	DATE	BY

Kimley-Horn and Associates, Inc.
 © 2013 KIMLEY-HORN AND ASSOCIATES, INC.
 6130 STONERIDGE MALL RD, STE 370 PLEASANTON, CA 94588
 PHONE: 925-398-4840 FAX: 925-398-4849
 WWW.KIMLEY-HORN.COM



DESIGNED BY TH/JP	DRAWN BY TH/CG	CHECKED BY JP
PLANS PREPARED UNDER SUPERVISION OF:		
JOHN PULLIAM, P.E. REGISTERED CIVIL ENGINEER		
APRIL 2013 DATE	68897 RCE NO.	



PROJECT LAYOUT PLANS
CURREY AVE

CITY OF SAUSALITO 2013 STREET IMPROVEMENT PROJECT

DRAWING NO	PL-11
SHEET	14 of 27
JOB No.	097901001

K:\BAY_BROW\097901001 - Sausalito Street Repair\Design\CAD\Plan Sheets\14 PL-11 - CURREY AVE.dwg, Layout: 14 PL-11 - CURREY AVE Apr 18, 2013 - 9:06am Plotted by: denise.cerrey