

# Gate 6 Rd Intersection Improvements- Vicinity Image

Site



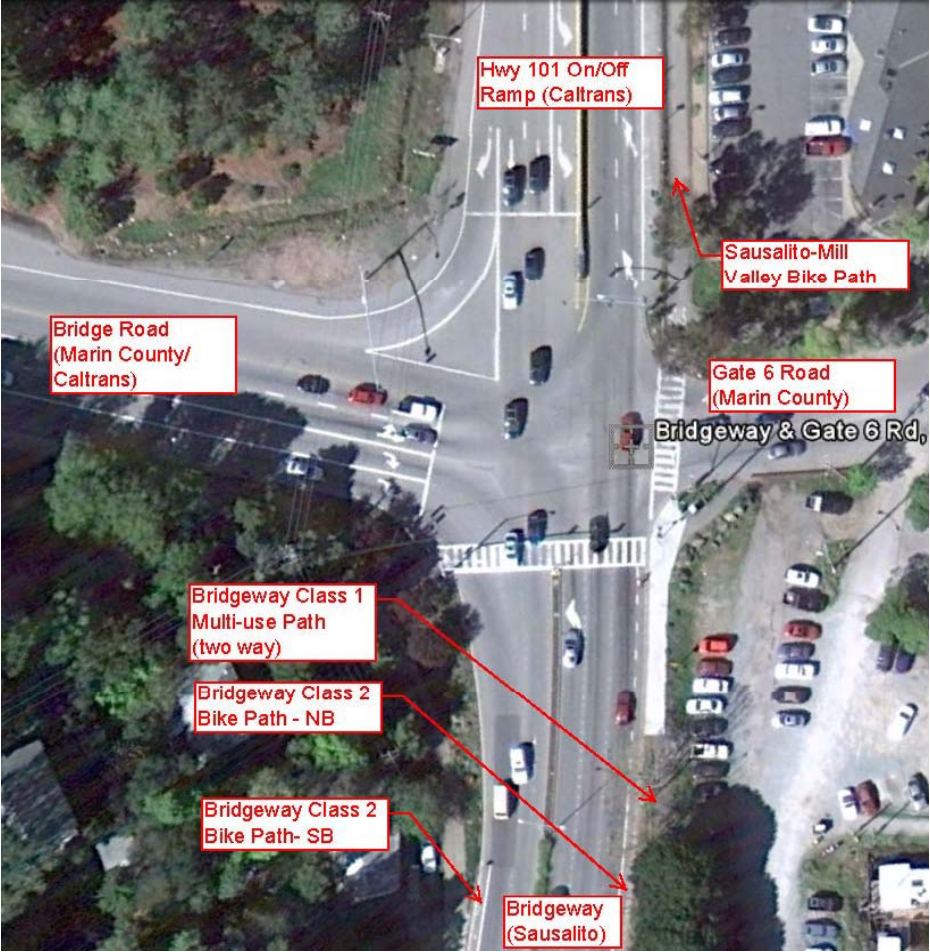
# Gate 6 Rd Intersection

- Agenda
  - Self Introduction-City Representatives
  - Introduction-Project Design Team
  - Discussion of Project – City Powerpoint Presentation
  - Other Alternatives-Richard Pavek/Others
  - Q&A
  - Feedback on Alternatives Exhibit – Charette
  - Concluding Statement

# Gate 6 Rd Intersection

- Purpose of today's Workshop
  - Discuss project with Attendee's
  - Solicit feedback and new ideas on addressing intersection problems
  - Take comments into consideration to develop "final" concept that tries to address feedback that was received

# Gate 6 Rd. Intersection - Site Image





# Gate 6 Rd Intersection Existing Operator Views



Looking Westerly



Looking Northerly into Bike Path

# Gate 6 Rd Intersection Existing Operator Views

Looking Easterly



# Gate 6 Rd Intersection

## Problem Statement

- Departing Travelers on Gate 6 have no active indication when it is ok to turn left
- Pedestrians Xing Bridgeway don't have a protected movement
- Awkward movement for Southbound Cyclists transitioning from Sausalito-Mill Valley Path to Southbound Bridgeway Class 2 Path
- Movement conflicts between Pedestrians, Cyclists, and Motorists

# Gate 6 Rd Intersection

- Sausalito applied for and received a grant to study the intersection and develop improvements to correct problems.
- Consultant Team was hired to study conditions, consider earlier work and develop ideas for improvements
- 6 alternatives developed and analyzed for impacts (signal timing changes, Levels of Service Changes, conformance with standards)



# Gate 6 Rd Intersection

- Sausalito City Council shown Alternatives on December 10, 2013
- City Council directed that a workshop be arranged to allow people interested and/or affected by the project to learn more and express opinions on the project.

# Gate 6 Rd Intersection Project Schedule – Tentative

- December 10, 2013
  - City Council Initial Presentation
- December 20, 2013
  - Public Notification-Comment Period Started,
- January 15, 2014
  - Public Workshop
- February 14, 2014
  - Comment Period ends
- February 25, 2014
  - City Council Updated on Project

# Gate 6 Rd Intersection Project Schedule – Tentative(Cont.)

– February/March

- Caltrans asked to confirm that concept can be implemented
- Marin County Representative asked to review, approve project concept design
- Sausalito City Council asked to approve concept

# Gate 6 Rd Intersection Project Schedule – Tentative(Cont.)

## – April

- Consultants Prepare Construction Plans/Technical Specifications
- Consultants prepare environmental technical studies/analyses for NEPA/CEQA compliance
  - Air Quality Technical Memo
  - Section 4(f) and 6(f) (Impacts to Federal/State/Local Park Lands) Technical Memo
  - Traffic Study/Technical Memo
  - Hazardous Material Technical Memo
  - Water Quality Technical Memo (Const. Pollution Prevention Plan)
  - Equipment Staging Technical Memo (Const. Staging)
  - Floodplain Technical Memo
  - Right-of-Way Technical Memo
  - Marin County Permit (as applicable)
  - Caltrans Encroachment Permit (as applicable)

# Gate 6 Rd Intersection Project Schedule – Tentative(Cont.)

## – May/June

- Finalize Project Design/Cost Estimate
- Seek funds to construct

***Project considered complete when  
Caltrans Issues NEPA Certification/City  
of Sausalito Issues CEQA Notice***

## – After June, 2014

- Coordinate with Caltrans/Marin County on Construction Implementation
- Construction



# Gate 6 Rd Intersection Improvements

Starting Point-

2011 - Gate 6 Rd to Ferry Terminal Feasibility Study

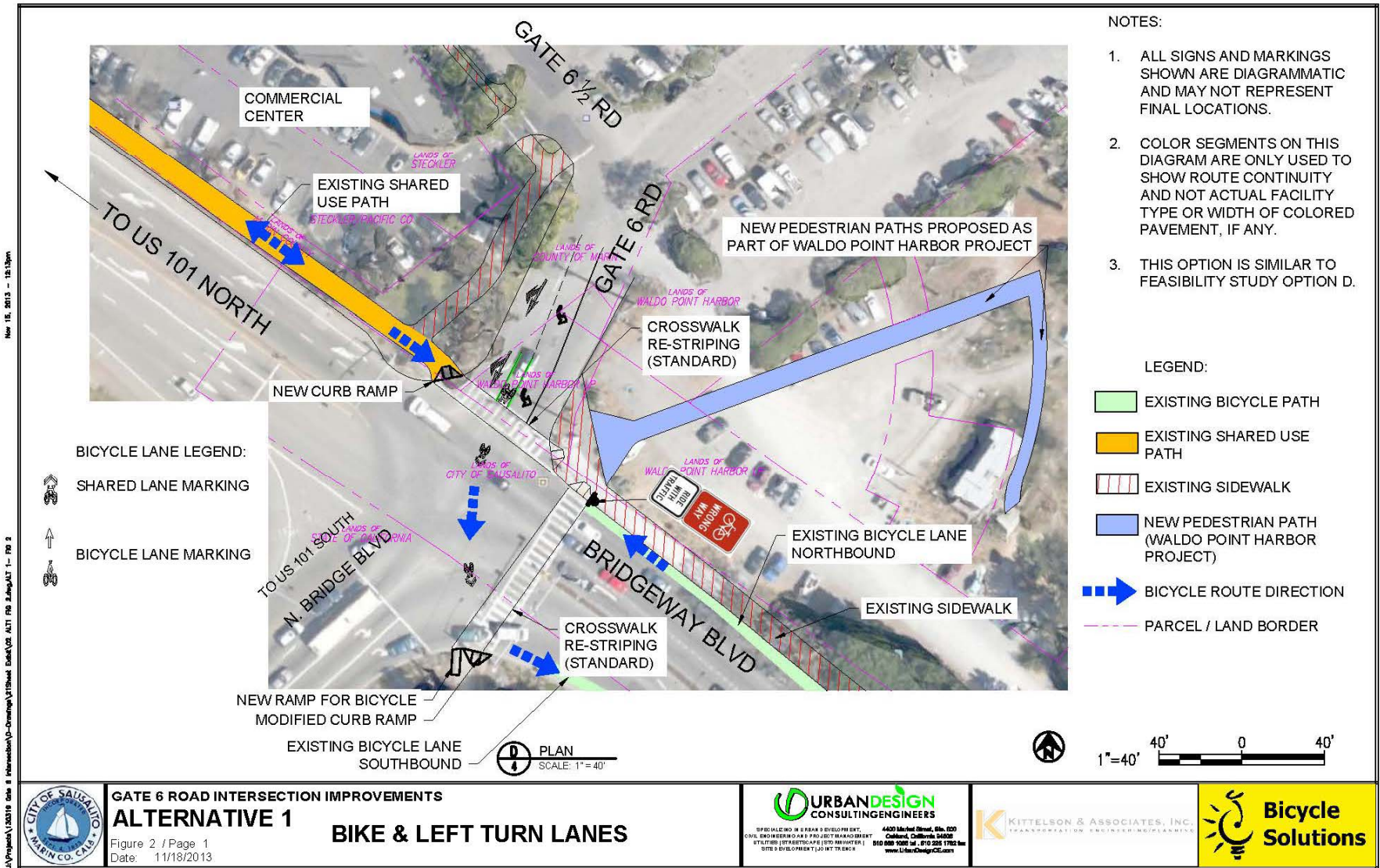
4 Options Suggested for Gate 6 Rd

- 1) Gate 6 ½ Road Connection –Alternative 2
- 2) Bike Signal-Alternative 3
- 3) Gate 6 Rd Path Improvements-Alternative 4
- 4) Bike Box-Alternative 5

Alternative 1 was suggested by Caltrans staff mindful of the traffic conditions and constraints on Signal modifications

Alternative 6 developed collectively by  
Sausalito/Caltrans/Marin County Technical Staff/Consultant

# Gate 6 Rd Intersection Improvements



Nov 18, 2013 - 12:13pm  
 U:\Projects\10310\_sds - Interchange\Drawings\111813\Gate 6\111813\_Gate 6\_Rd\_2.dwg\111813 - Fig 2

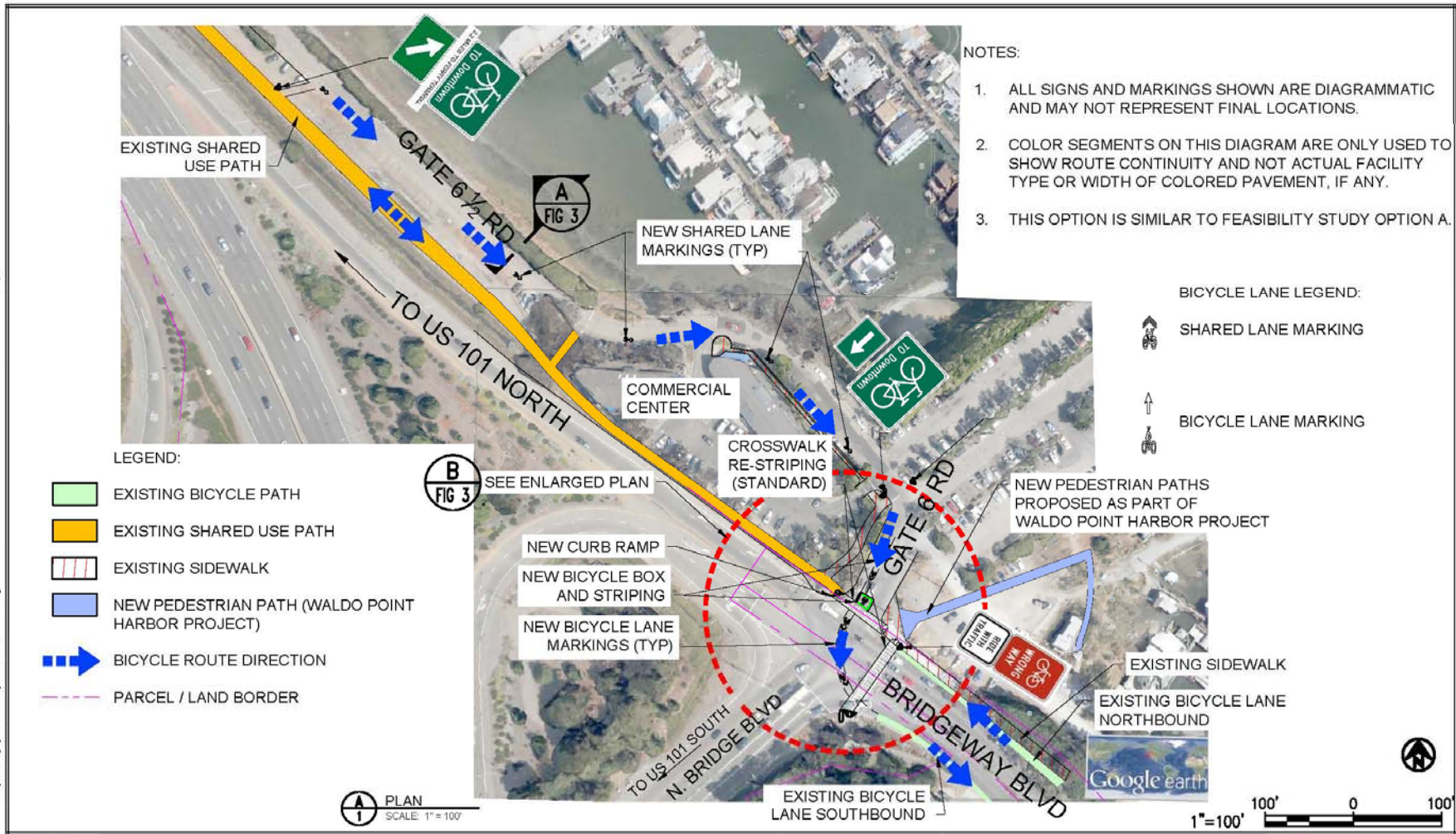
# Alternative 1

## Bike and Left Turn Lanes

- Adds a Class 2 bike lane on Gate 6 Rd
- Adds “sharrow” thru intersection
- Adds left turn indicator
- Moves thru lane to shoulder lane



# Gate 6 Rd Intersection Improvements



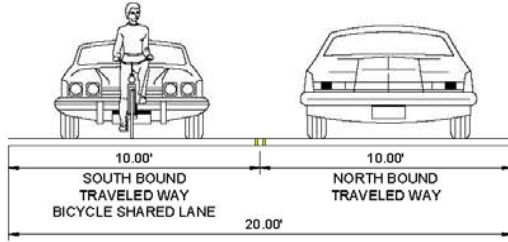
Nov 16, 2013 - 10:13pm  
 C:\projects\120213 Gate 6 Intersection\Drawings\Utility\Sheet\120213-04 AC22 FIG 3-2.dwg, 11/18/2013 FIG 3



**GATE 6 ROAD INTERSECTION IMPROVEMENTS**  
**ALTERNATIVE 2**  
**GATE 6 1/2 ROAD CONNECTOR**  
**(BICYCLE SHARED ROAD CONNECTOR)**  
 Figure 3 / Page 1  
 Date: 11/18/2013



# Gate 6 Rd Intersection Improvements



NOTE:  
SEE FIGURE 2  
FOR SECTION POSITION

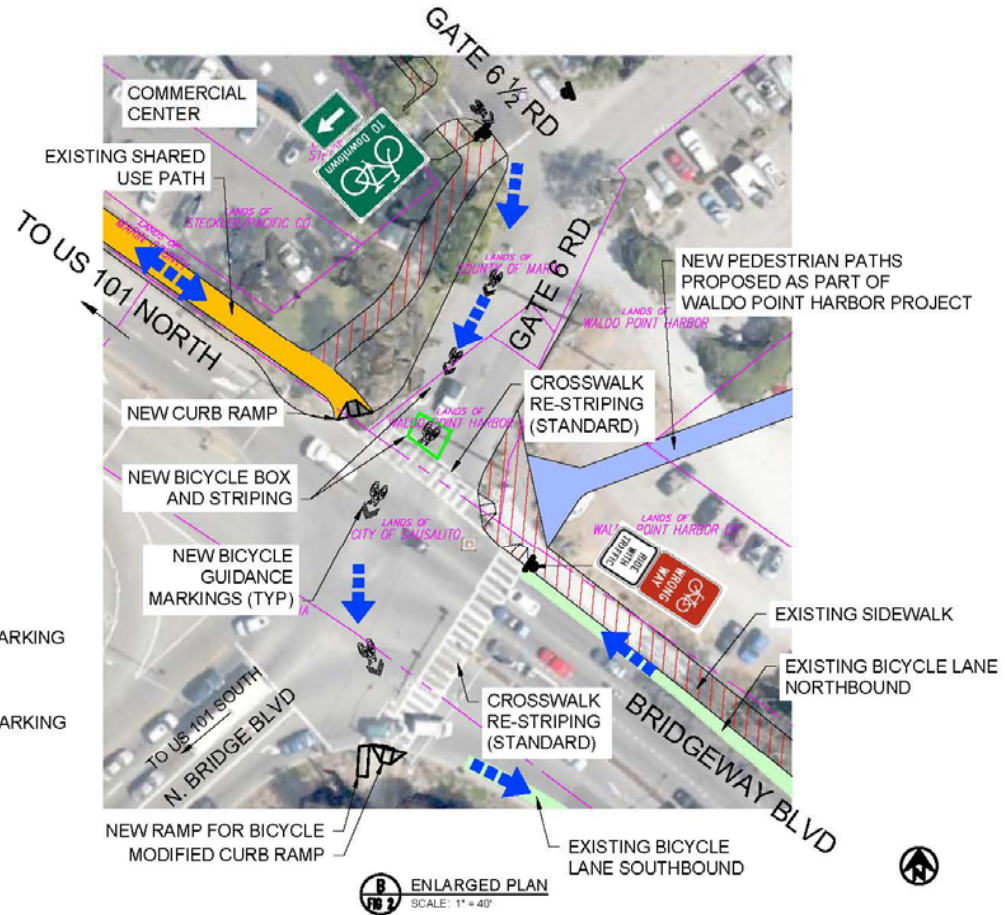
**A** GATE 6 1/2 ROAD CROSS SECTION  
SCALE: 1" = 10'

NOTES:

1. ALL SIGNS AND MARKINGS SHOWN ARE DIAGRAMMATIC AND MAY NOT REPRESENT FINAL LOCATIONS.
2. COLOR SEGMENTS ON THIS DIAGRAM ARE ONLY USED TO SHOW ROUTE CONTINUITY AND NOT ACTUAL FACILITY TYPE OR WIDTH OF COLORED PAVEMENT, IF ANY.
3. THIS OPTION IS SIMILAR TO FEASIBILITY STUDY OPTION A.

LEGEND:

- |  |  |  |                      |
|--|--|--|----------------------|
|  | EXISTING BICYCLE PATH                            |  | SHARED LANE MARKING  |
|  | EXISTING SHARED USE PATH                         |  | BICYCLE LANE MARKING |
|  | EXISTING SIDEWALK                                |  |                      |
|  | NEW PEDESTRIAN PATH (WALDO POINT HARBOR PROJECT) |  |                      |
|  | BICYCLE ROUTE DIRECTION                          |  |                      |
|  | PARCEL / LAND BORDER                             |  |                      |



Rev 15, 2013 - 12:13pm

U:\Projects\2013\08\_8\_Intersection\0-Drawing\01Sheet.dwg\01-01.dwg\01-02.dwg

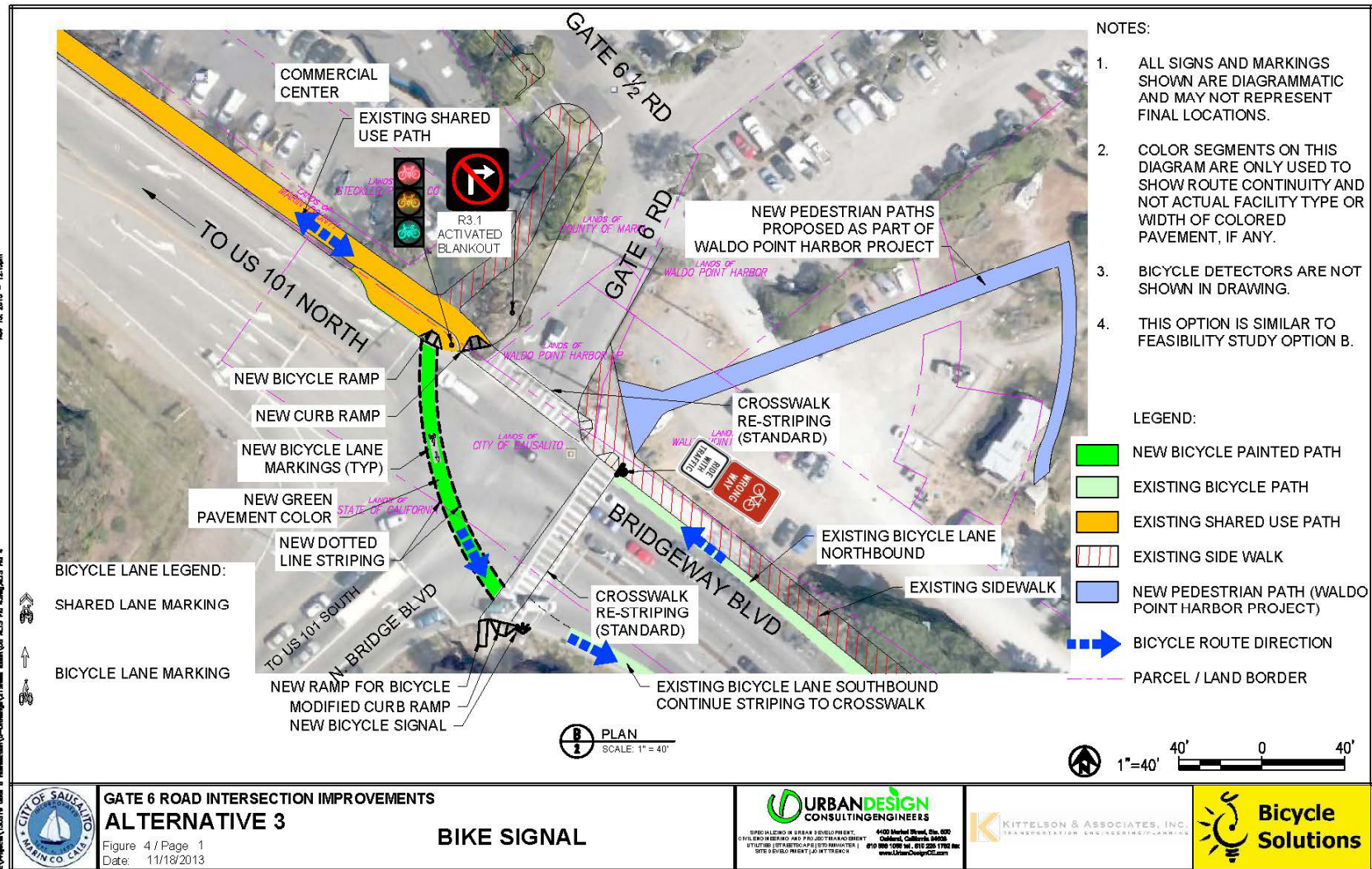


# Alternative 2

## Gate 6 ½ Rd Connector

- Directs SB Cyclists on Trail to Gate 6 ½ Road
- Adds Bike Box
- Adds “Sharrows” thru intersection
- Considers Left turn indicator-possible signal timing changes if does not significantly add to delay/cycle length

# Gate 6 Rd Intersection Improvements



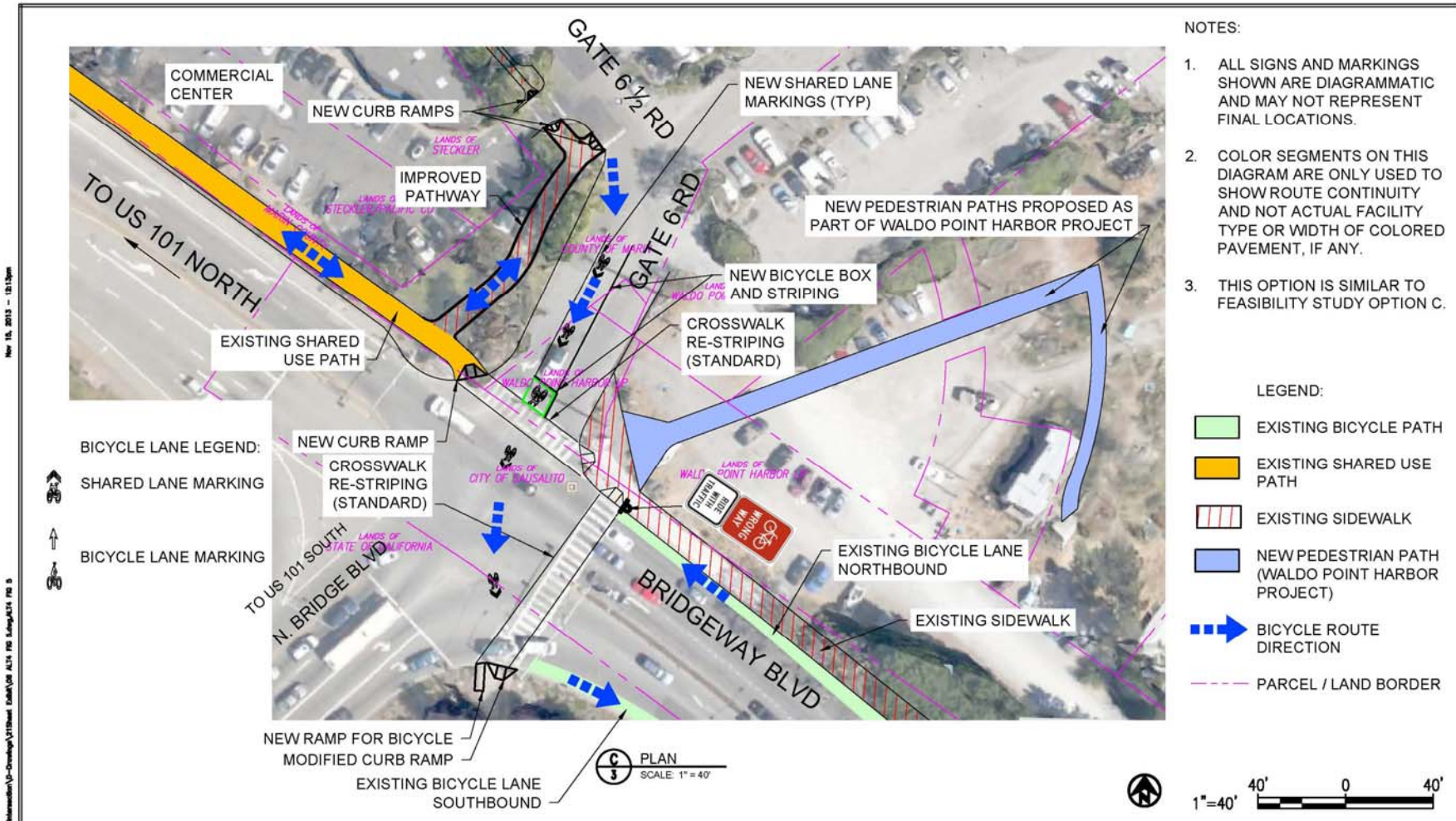
# Alternative 3

## Bike Signal

- Adds Bike Signal-rare facility in region
- Adds Colored pavement-rare facility in the region
- Bike Left turn would be exclusive
- Free motor vehicle right turn from Gate 6 to Hwy 101 restricted



# Gate 6 Rd Intersection Improvements



- NOTES:
1. ALL SIGNS AND MARKINGS SHOWN ARE DIAGRAMMATIC AND MAY NOT REPRESENT FINAL LOCATIONS.
  2. COLOR SEGMENTS ON THIS DIAGRAM ARE ONLY USED TO SHOW ROUTE CONTINUITY AND NOT ACTUAL FACILITY TYPE OR WIDTH OF COLORED PAVEMENT, IF ANY.
  3. THIS OPTION IS SIMILAR TO FEASIBILITY STUDY OPTION C.

Nov 15, 2013 - 10:13am  
 U:\Projects\130219 Gate 6 Intersection\03-Drawings\03Final\Gate6\04 ALTA PDS\Map\ALTA PDS 8



**GATE 6 ROAD INTERSECTION IMPROVEMENTS**  
**ALTERNATIVE 4**  
**GATE 6 ROAD PATH IMPROVEMENT**  
 Figure 5 / Page 1  
 Date: 11/18/2013

**URBANDSIGN**  
 CONSULTING ENGINEERS  
 SPECIALIZING IN URBAN DEVELOPMENT  
 CHAL. ENGINEERING AND PROJECT MANAGEMENT  
 UTILITIES / STREET SCAPES / SITE MANAGEMENT /  
 SITE DEVELOPMENT / JOINT TRENCH  
 4400 Market Street, Ste. 800  
 Oakland, California 94612  
 510 866 1060 fax: 510 225 1762 hsa  
 www.UrbanDesignCE.com

**KITTELSON & ASSOCIATES, INC.**  
 TRANSPORTATION ENGINEERING/PLANNING  
 4400 Market Street, Ste. 800  
 Oakland, California 94612  
 510 866 1060 fax: 510 225 1762 hsa  
 www.kittelson.com



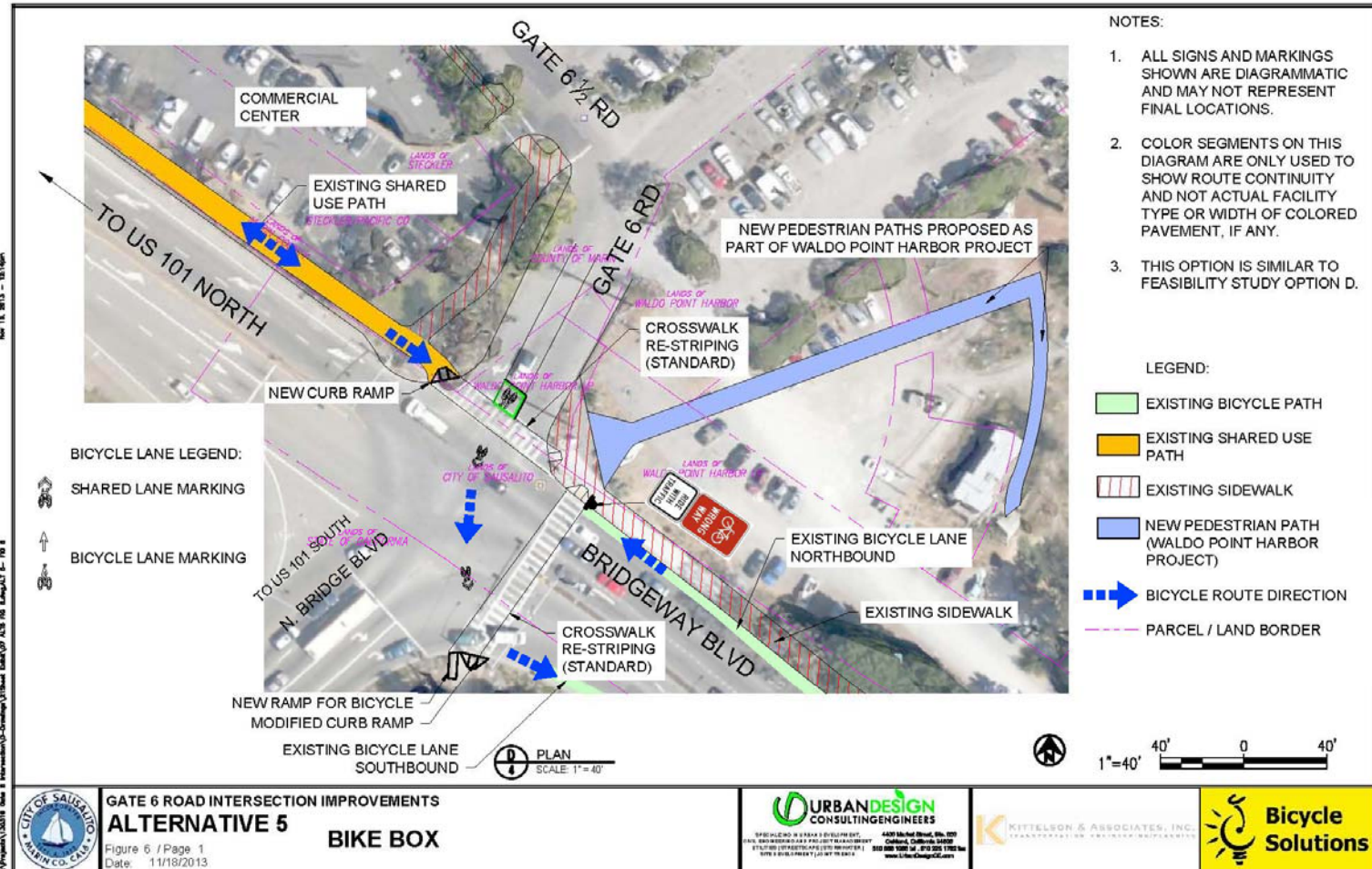
# Alternative 4

## Gate 6 Rd Path Improvements

- Similar to Alternative 2
  - Adds Bike Box
  - Adds “Sharrows” thru intersection
  - Adds Left turn indicator
- Directs bike traffic to Gate 6 ½ along an improved Gate 6 sidewalk



# Gate 6 Rd Intersection Improvements

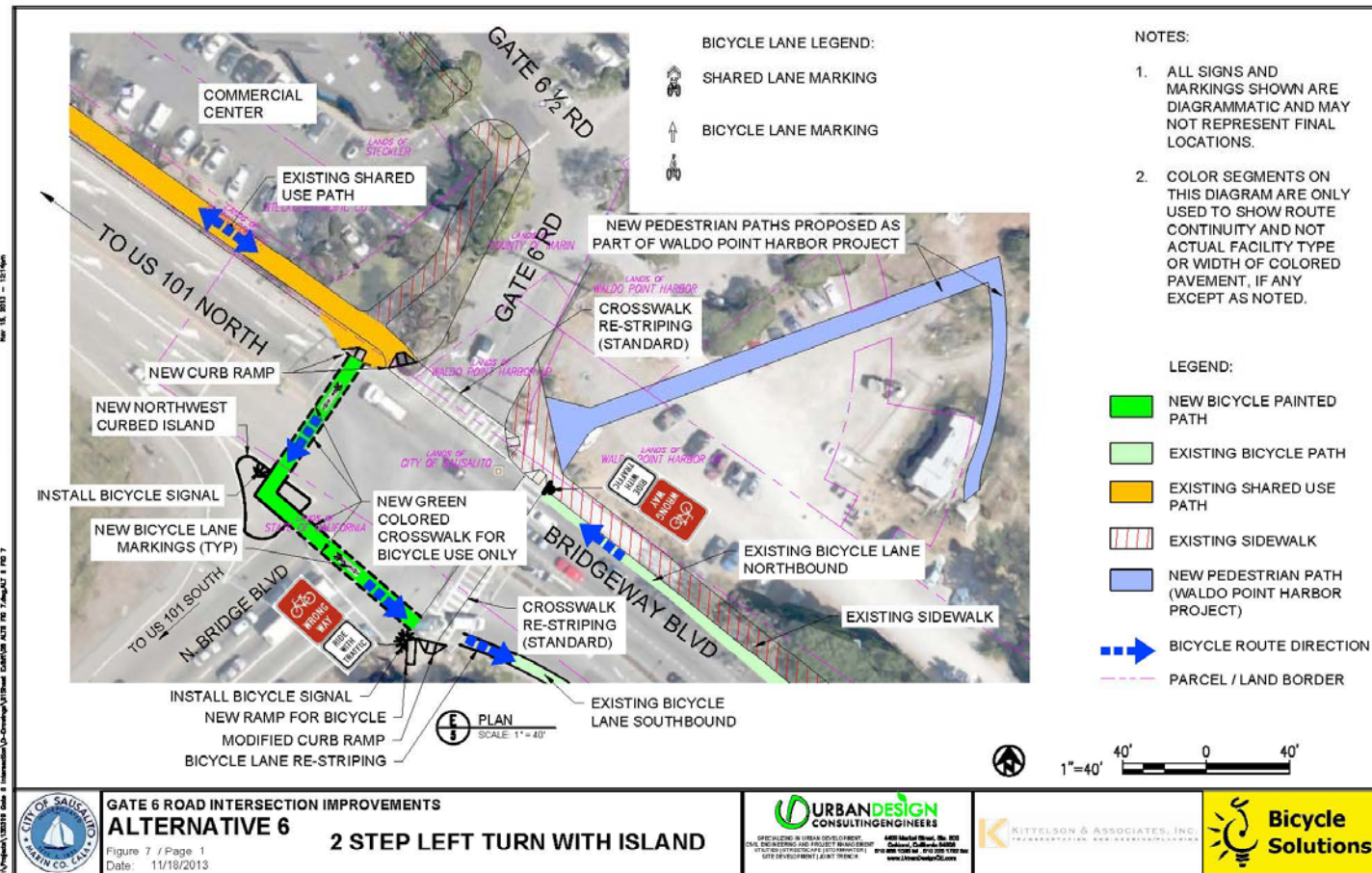


# Alternative 5

## Bike Box

- Adds Bike Box Striping
- Adds Sharrows through the intersection

# Gate 6 Rd Intersection Improvements



# Alternative 6

- Reconfigures a striped “gore” into a corner Island
- Creates second crossing area for cyclists and pedestrians

# Gate 6 Rd Intersection Improvements

- Public Comment- Until February 14, 2014
- Plans and Studies available on-line at:
  - <http://www.ci.sausalito.ca.us/index.aspx?page=2068>
- Plans and Studies available for review
  - Sausalito Public Library Reference Desk



# Gate 6 Rd Intersection Improvements

- Next Steps
  - Review-synthesize comments
  - Report Back to Council
- Future
  - Prepare Project Plans
  - Prepare Specifications
  - Prepare Environmental Review Documents(CEQA/NEPA)

# Gate 6 Rd Intersection Improvements

- Questions/Comments