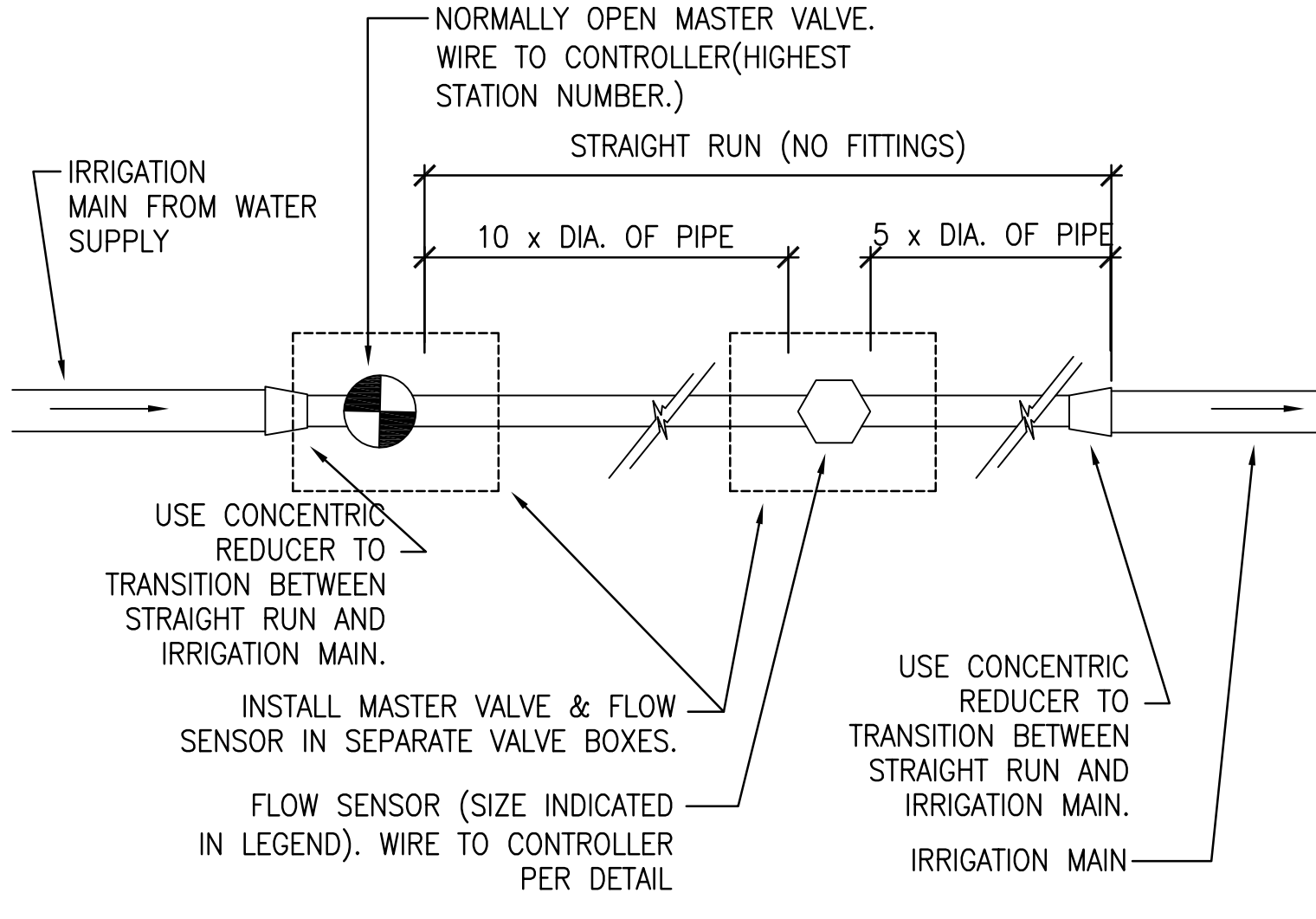


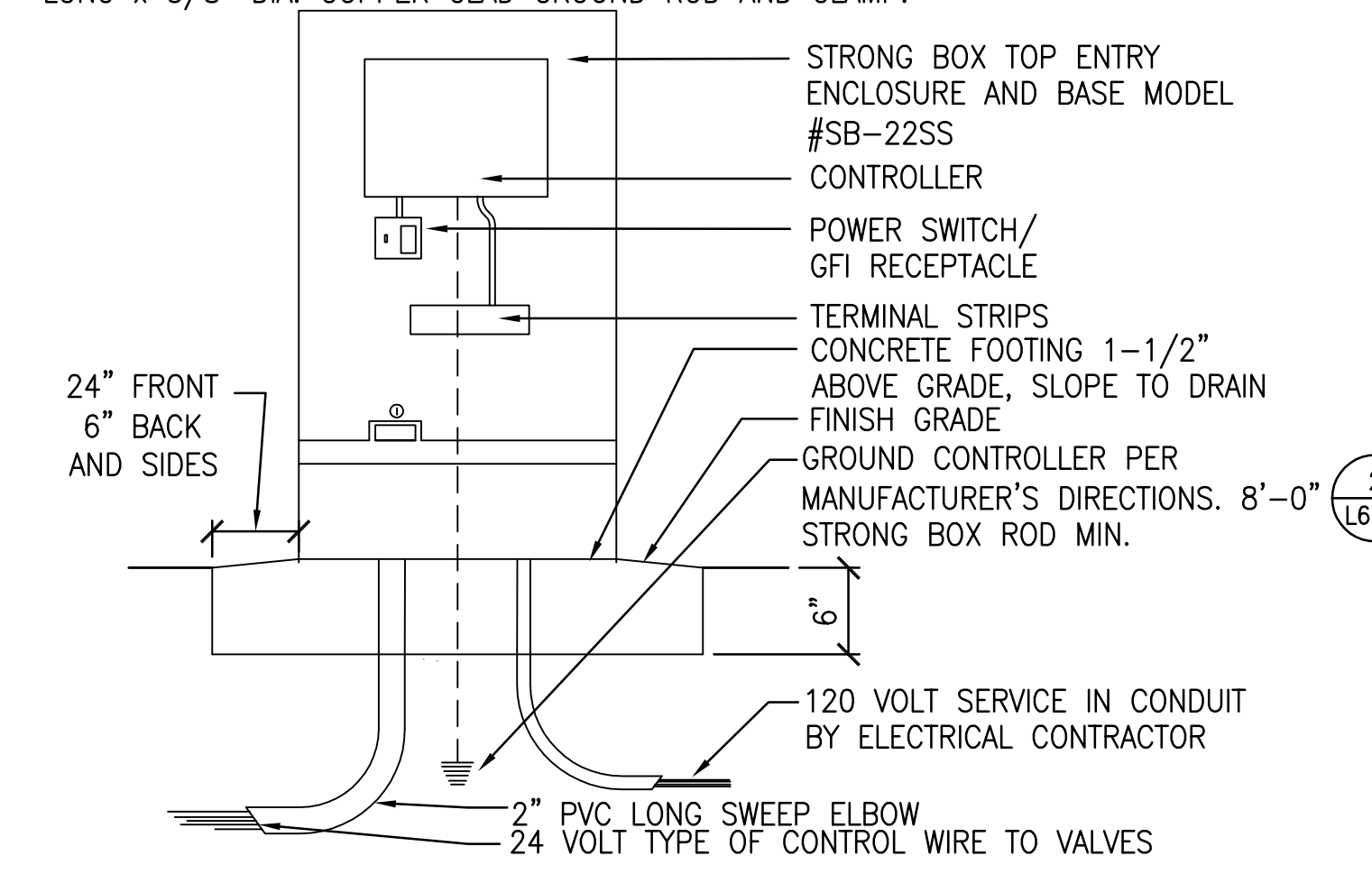
LASCO REDUCING COUPLINGS ARE AVAILABLE IN THE FOLLOWING SIZES AND PART NUMBERS:  
 429-585 8"x6"  
 429-532 6"x4"  
 429-422 4"x3"  
 429-338 3"x2"  
 429-251 2"x1 1/2"  
 429-212 1 1/2"x1 1/4"  
 429-168 1 1/4"x1"

**MASTERVE/ FLOW SENSOR INSTALLATION DETAIL**  
**NOTE:**  
 1. FLOW SENSOR MUST BE INSTALLED WITH INSERT (TOP) POSITIONED VERTICALLY AND BODY (TEE) POSITIONED HORIZONTALLY.  
 2. FLOW SENSOR CABLE MUST BE RUN IN 1" PVC CONDUIT FROM FLOW SENSOR TO CONTROLLER ENCLOSURE.  
 3. MANUFACTURE: UGT\* 130-B SOUTH BUCHANAN CIRCLE, PACHECO, CA 94553, 888-438-7435

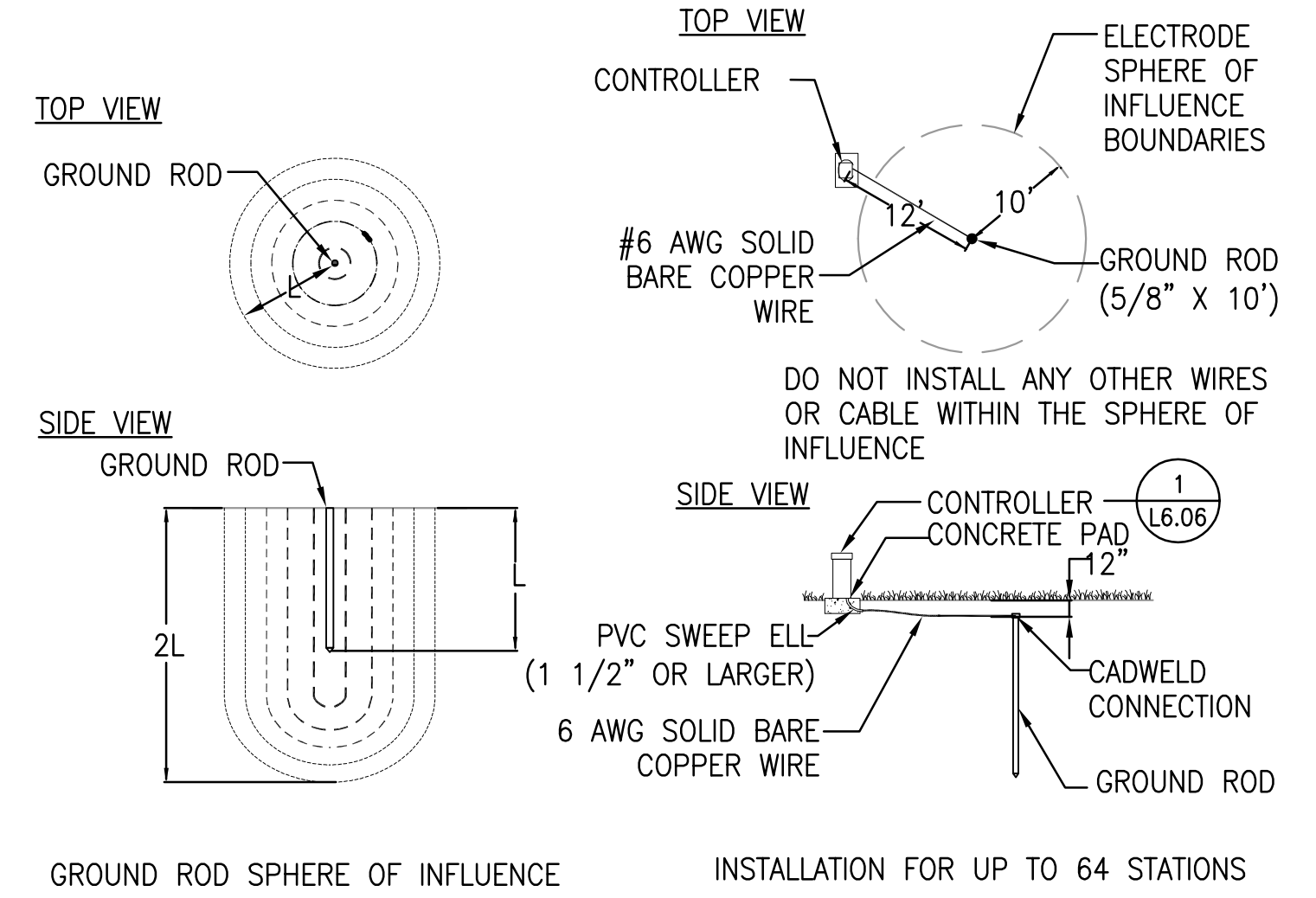


**3 MASTER VALVE & FLOW SENSOR**  
 SCALE: 3/4" = 1'

NOTE: SEE MANUAL FOR MOUNTING INSTRUCTIONS. ALL WIRING TO BE PER LOCAL CODE. PROVIDE GROUND AS REQUIRED BY N.E.C., LOCAL CODE, AND MANUFACTURER. USE 8' LONG x 5/8" DIA. COPPER CLAD GROUND ROD AND CLAMP.



**1 PEDESTAL-MOUNT CONTROLLER**  
 SCALE: 1" = 1'



**2 GROUNDING ROD**  
 SCALE: 3" = 1'



consultant	
<b>CITY OF SAUSALITO</b>	
owner	
<b>ROBIN SWEENEY PARK</b>	
APN 064-165-012	
420 LITHO STREET SAUSALITO, CA, 94965	
project	
1. PLANNING SUBMITTAL	02.01.2013
2. PLANNING SUBMITTAL	10.15.2013
3. PLANNING SUBMITTAL	07.29.2015
4. PERMIT SUBMITTAL	10.02.2015
no.	description

key map	
date	10.02.2015
scale	AS SHOWN
project no.	COS10-01

<b>IRRIGATION DETAILS</b>	
sheet title	
<b>L6.06</b>	
sheet no.	

CITY HALL / LIBRARY

CARDUCCI & ASSOCIATES, INC.  
 LANDSCAPE ARCHITECTURE PLANNING  
 IRRIGATION DESIGN URBAN DESIGN  
 555 BEACH STREET, 4TH FLOOR  
 SAN FRANCISCO, CALIFORNIA 94133  
 PHONE (415) 674-0990 FAX (415) 674-0999  
 © 2015 CARDUCCI & ASSOCIATES, INC.



consultant

CITY OF SAUSALITO

owner

ROBIN SWEENEY PARK

APN 064-165-012  
 420 LITHO STREET  
 SAUSALITO, CA, 94965

project

- 1. PLANNING SUBMITTAL 02.01.2013
- 2. PLANNING SUBMITTAL 10.15.2013
- 3. PLANNING SUBMITTAL 07.29.2015
- 4. PERMIT SUBMITTAL 10.02.2015

no. description

key map

date 10.02.2015  
 scale AS SHOWN  
 project no. COS10-01

SOIL PREPARATION LEGEND & PLAN  
 sheet title

L7.00

sheet no.

LITHO STREET

BEE STREET

CALEDONIA STREET

SOIL PREPARATION LEGEND

SYMBOL DESCRIPTION

- AMEND ON-SITE TOP SOIL 12" DEEP & SALVAGE ON SITE TOPSOIL WHERE (E) PAVED AREAS OCCUR. BLEND TO (E) TOPSOIL AT EDGES, TYP. PROTECT (E) TREE ROOT ZONE, POCKET PLANT NEW PLANTING IN THIS AREA. WHERE (E) PAVING IS REMOVED, FILL TO FINISH GRADE WITH IMPORT TOP SOIL AS NEEDED. (6) 18.02
- RELOCATED (E) TREE SOIL, PROTECT
- AMENDED ON-SITE TOP SOIL (12" DEEP)
- IMPORT TOP SOIL (12" DEEP)
- ANGULAR WASHED SAND TRENCH AT PERF PIPE PER (4) 18.02

(E) TREE, SEE SURVEY & (E) TREES PLAN

PROPOSED TREE, SEE PLANTING PLAN

PROJECT BENCHMARK:  
 SET CUT CROSS  
 ELEVATION = 100.00



0 10 20 FT NORTH

BUILDING PERMIT SUBMITTAL

Only the original, signed hard copy of this drawing constitutes Carducci & Associates professional work product. Carducci & Associates will not be responsible for any modifications made to this drawing electronic or otherwise that is not signed by Carducci & Associates. If the contractor encounters errors or discrepancies on the drawings or site conditions which prevent or delay the completion of work as indicated, the contractor shall notify the owner and landscape architect by the time of bid of all such errors, discrepancies and omissions. The contractor shall indemnify and hold the landscape architect and the owner harmless if either contracting for the work he has monetary damage because of site conditions, errors, discrepancies or omissions at the time of bid.

**PLANTING NOTES**

- PLANT MATERIAL QUANTITIES ARE SHOWN FOR INFORMATION ONLY. CONTRACTOR SHALL VERIFY ALL QUANTITIES PRIOR TO ORDER.
- SUBSTITUTIONS OF PLANT MATERIAL, SPECIES AND/OR VARIETIES ARE NOT PERMITTED.
- SUBMIT PLANT LIST SHOWING QUANTITIES AND AVAILABILITY OF PLANT MATERIAL WITHIN 30 DAYS OF NOTICE TO PROCEED.
- ALL PLANT MATERIAL SHALL CONFORM TO THE ANSI Z601 "STANDARD FOR NURSERY STOCK".
- AMEND SOILS PER SOIL TEST RECOMMENDATIONS, SEE SPECIFICATIONS & SOIL PREPARATION PLAN.
- APPLY A THREE INCH (3") LAYER OF MULCH IN ALL NON-TURF AND NON-GRASS/PLUG AREAS AND TREE/SHRUB BASINS. KEEP BARK SIX INCHES (6") AWAY FROM TREE CROWNS, EXCEPT AS NOTED ON PLAN.
- ALL LANDSCAPED AREAS SHALL BE MAINTAINED IN A HEALTHY AND WEED-FREE CONDITION. DEAD PLANT MATERIAL SHALL BE REPLACED IMMEDIATELY. ALL TREES SHALL BE MAINTAINED AND PRUNED IN ACCORDANCE TO THE INTERNATIONAL SOCIETY OF ARBORICULTURE (ISA).
- INSTALL PLANT MATERIAL PER SPECIFICATIONS.
- NOTIFY PROJECT MANGER 48 HOURS PRIOR TO PLANT DELIVERY. ALL PLANTS TO BE REVIEWED AND ACCEPTED PRIOR TO PLANTING.
- ALL PLANTS LISTED ABOVE TO BE INSTALLED BY CONTRACTOR.
- POT HOLE ALL TREE PLANTING LOCATIONS TO IDENTIFY CONFLICTS UNDERGROUND UTILITIES BEFORE TREE PLANTING.
- WHERE POSSIBLE LOCATE TREES AT LEAST 5' FROM EDGE OF WALKS, PAVING, AND UNDERGROUND UTILITIES. ADJUST LOCATION IN FIELD AS REQUIRED AND AS APPROVED BY LANDSCAPE ARCHITECT.
- SEE ELECTRICAL DRAWINGS AND LANDSCAPE DRAWINGS FOR APPROXIMATE LOCATION OF UTILITIES.
- SLOPE PLANTING AREAS TO DRAIN.
- SUBMIT PHOTOS OF TREES FOR REVIEW & INITIAL ACCEPTANCE PRIOR TO PURCHASE & DELIVERY TO SITE. INITIAL ACCEPTANCE FROM PHOTOS DOES NOT EXEMPT TREES FROM ON-SITE REVIEW & ACCEPTANCE.
- SUPPLY BENTGRASS SIGNAGE IN SPANISH & ENGLISH (SIGN TO BE PROVIDED BY SOD PRODUCER). ONE SIGN IN EACH LANGUAGE.

**TRANSPLANTING NOTES**

- TRANSPLANTING OF TREES IN ACCORDANCE TO THE INTERNATIONAL SOCIETY OF ARBORICULTURE (ISA).
- TRANSPLANTING OF TREES TO BE CONDUCTED BY LANDSCAPE CONTRACTOR UNDER SUPERVISION OF ARBORIST.
- ARBORIST TO INSTRUCT THE PROPER TECHNIQUES FOR ROOT TRIMMING, MOVING OF TREE AND PLANTING.
- TREE TO BE MOVED IN A MANNER THAT IT IS LOCATED WITH THE SAME ORIENTATION TO THE SUN AS IT WAS PRIOR TO TRANSPLANTING. MEASURE TO TRUE NORTH PRIOR TO MOVING AND ORIENT IN SAME DIRECTION WHEN PLANTING.
- IF TRANSPLANTED TREE FAILS TO SURVIVE, THE TREE IS TO BE REPLACED BY NO LESS THAN A 72" BOX OF THE SAME TYPE OF TREE.

**PLANTING LEGEND**

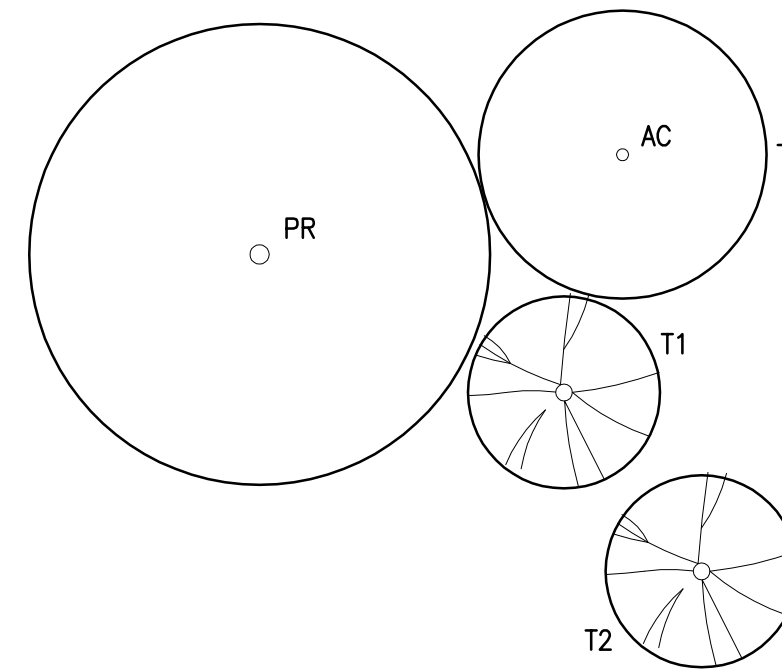
SYMBOL	DESCRIPTION
■ ■ ■ ■	IRRIGATION REMOTE CONTROL VALVES & QUICK COUPLER VALVES, TYP.
▨	100% OF AREA: SOD W/ BROADCAST CALIFORNIA COASTAL WILDFLOWER SEED MIX SEEDING RATE: 15 LBS/ACRE
▨	PLATANUM TE PASPALUM (SEASHORE PASPALUM) SAND BASED SOD MIX
▨	MULCHED PLANT BED WHERE NO PLANTING IS SHOWN. ALL CONTAINER PLANTING SHALL RECEIVE MULCH TYPICALLY. 1" MINUS MULCH - SEE SPECIFICATIONS, DARK BROWN COLOR

**NOTE:**  
 PLATANUM TE PASPALUM AVAILABLE FROM WEST COAST TURF (888-893-8873)  
 NATIVE BENTGRASS AVAILABLE FROM DELTA BLUEGRASS (800-637-8873)  
 CALIFORNIA BAY AREA WILDFLOWER SEED MIX AVAILABLE FROM PACIFIC COAST SEED (800-733-3462)

**LEGEND**

SYMBOL	DESCRIPTION
---	PROPERTY LINE/PUBLIC ROW EASEMENT
—LOW—	LIMIT OF WORK
▨	(E) CONDITIONS, SEE TOPOGRAPHIC SURVEY
-----	ENLARGEMENT
-----	WORK BY CITY
○	(E) TREE, PROTECT IN PLACE, TYP.

**TREES**



COUNT	KEY	BOTANICAL NAME	COMMON NAME	SPACING	SIZE	TRUNK	WATER USE WUCOLS_1	MATURE HEIGHT	MATURE WIDTH	NOTES
3	AC	ACER CIRCINATUM	VINE MAPLE	AS SHOWN	24" BOX	MULTI-TRUNK	M	5'-35'	--	--
1	PR	PLATANUS RACEMOSA	CALIFORNIA SYCAMORE	AS SHOWN	48" BOX	STANDARD	M	30'-80'	20'-50'	--
1	T1	EXISTING RELOCATED FLOWERING CHERRY	FLOWERING CHERRY	AS SHOWN	72" MIN DIAM PROTECTED ROOT AREA		M			EXISTING SPECIMEN
1	T2	EXISTING SCHINUS TEREBINTHIFOLIUS	PEPPER TREE	AS SHOWN	72" MIN DIAM PROTECTED ROOT AREA		M			EXISTING SPECIMEN

**SHRUBS AND GROUND COVERS**

COUNT	KEY	BOTANICALNAME	COMMONNAME	SPACING	SIZE	WATER_USE_ (WUCOLS_1)	MATUREHEIGHT	MATUREWIDTH	NOTES
10	Y	ACHILLEA MILLEFOLIUM 'CALISTOGA'	WHITE YARROW	2' OC	1 GAL	L	3' STEMS	SPREADING	--
33	A	AQUILEGIA FORMOSA	WESTERN COLUMBINE	1'-6" OC	1 GAL	L	1.5'-3'	1.5'	--
64	F	ATHYRIUM FELIX-FEMINA	LADY FERN	2' OC	1 GAL	M	3'-4'	2-3'	--
262	C	CAREX TUMULICOLA	BERKELEY SEDGE	1'-6" OC	1 GAL	L	1'-2'	1'-2'	MAY BE COPPIED PRIOR TO GROWTH OF NEW FOLIAGE IN SPRING TO KEEP IT FRESH LOOKING
1	E	GARRYA ELLIPTICA 'JAMES ROOF'	COAST SILKTASSEL	7'-6" OC	5 GAL	L	5'-10'	8'-10'	--
3	GS	GAULTHERIA SHALLON	SALAL	6' OC	15 GALLON	M	4-10 FT	4-10 FT	--
117	I	IRIS DOUGLASIANA	DOUGLAS IRIS	1'-6" OC	1 GAL	L	1'-2'	1'-2'	--
76	D	IRIS DOUGLASIANA 'CANYON SNOW'	CANYON SNOW DOUGLAS IRIS	1'-6" OC	1 GAL	L	1'	2'	--
174	J	JUNCUS PATENS 'ELK BLUE'	CALIFORNIA GRAY RUSH	1'-6" OC	1 GAL	L	2'	2'	--
12	MC	MAHONIA AQUIFOLIUM 'COMPACTA'	COMPACT OREGON GRAPE	4' OC	5 GAL	M	2'-3'	5'	--
30	M	MIMULUS AURANTIACUS 'RUTILUS'	MONKEY FLOWER	2' OC	1 GAL	VL	4.5'	4.5'	--
4	R	MUHLENBERGIA RIGENS	DEER GRASS	3' OC	1 GAL	L	4'	4'	--
3	PM	POLYSTICHUM MUNITUM	SWORD FERN	2'-6" OC	5 GAL	M	2'-4'	2'-4'	--
32	R	RHAMNUS CALIFORNICA 'MOUND SAN BRUNO'	COFFEEBERRY	4' OC	5 GAL	L	4'-6'	4'-6'	--
3	RM	RHODODENDRON MACROPHYLLUM	WESTERN RHODODENDRON	6' OC	15 GAL	M	--	--	--
3	RO	RHODODENDRON OCCIDENTALE 'LEONARD FRISBIE'	WESTERN AZALEA 'LEONARD FRISBIE'	6' OC	15 GAL	M	6-10 FT	6-10 FT	--
7	G	RIBES AUREUM	GOLDEN CURRANT	3' OC	5 GAL	L	3-6'	3'-6'	--
3	RG	RIBES SANGUINEUM GLUTINOSUM	PINK WINTER CURRENT	4'-6" OC	5 GAL	L	5'-12'	5'-12'	--
4	RC	ROSA CALIFORNICA	CALIFORNIA WILD ROSE	4' OC	5 GAL	L	8'	6'	--
14	P	SALVIA LEUCOPHYLLA	PURPLE SAGE	3' OC	1 GAL	L	3' - 5'	3' - 5'	--
77	S	SALVIA SPATHACEA	HUMMINGBIRD SAGE	2' OC	1 GAL	L	1'-2'	3'-4'	--
51	B	STACHYS BULLATA	HEDGE NETTLE	1'-6" OC	1 GAL	L	1' - 1.5'	SPREADING	--
2	O	VACCINIUM OVATUM	EVERGREEN HUCKLEBERRY	3' OC	5 GAL	M	2'-3' SUN, 8'-10' SHADE	2'-3' SUN, 8'-10' SHADE	--
24	W	WOODWARDIA FIMBRIATA	GIANT CHAIN FERN	3'-0" OC	5 GAL	M	4'-5'	3'	--
28	Z	ZAUSCHNERIA CALIFORNICA	CALIFORNIA FUSCHIA	2' OC	1 GAL	L	2'-3'	2'-3'	--

**VINES**

COUNT	KEY	BOTANICAL NAME	COMMON NAME	SPACING	SIZE	WATER USE WUCOLS_1	MATUREHEIGHT	MATUREWIDTH	NOTES
3	L	CLEMATIS LIGUSTICIFOLIA	CLEMATIS	AS SHOWN	5 GAL	M	20'	--	TRAIN TO WALL
8	H	PARTHENOCISSUS 'HACIENDA CREEPER'	RANCHO VIEJO CREEPER	AS SHOWN	15 GAL	M	--	--	TRAIN TO WALL
2	T	TRACHELOSPERMUM JASMINOIDES	STAR JASMINE	AS SHOWN	5 GAL	M	20'-30'	--	TRAIN TO FENCE

MMWD TITLE 13 IRRIGATION EFFICIENCY ORDINANCE COMPLIANCE: I HAVE COMPLIED WITH THE CRITERIA OF THE MMWD ORDINANCE 421 AND APPLIED THEM ACCORDINGLY FOR THE EFFICIENT USE OF WATER IN THE LANDSCAPE DESIGN PLAN.

CARDUCCI & ASSOCIATES, INC.  
 LANDSCAPE ARCHITECTURE PLANNING  
 IRRIGATION DESIGN URBAN DESIGN  
 555 BEACH STREET, 4TH FLOOR  
 SAN FRANCISCO, CALIFORNIA 94133  
 PHONE (415) 674-0990 FAX (415) 674-0999  
 © 2013 CARDUCCI & ASSOCIATES, INC.



consultant

**CITY OF SAUSALITO**

owner

**ROBIN SWEENEY PARK**

APN 064-165-012

420 LITHO STREET  
 SAUSALITO, CA, 94965

project

- 1. PLANNING SUBMITTAL 02.01.2013
  - 2. PLANNING SUBMITTAL 10.15.2013
  - 3. PLANNING SUBMITTAL 07.29.2015
  - 4. PERMIT SUBMITTAL 10.02.2015
- no. description

key map

date 10.02.2015

scale AS SHOWN

project no. COS10-01

**PLANTING LEGEND & NOTES**

sheet title

**L8.00**

sheet no.