

FFRCA

LANDSCAPE ARCHITECTURE + PLANNING



Earl F. Dunphy Park & Southview Park Renovation Projects

May 11, 2016



LANDSCAPE ARCHITECTURE + PLANNING

May 11, 2016

Jonathon Goldman
City of Sausalito
420 Litho Street
Sausalito, CA 94965-1933

Dear Jonathon,

We are pleased to submit this proposal to the City of Sausalito for Dunphy and Southview Parks. We are very excited about the opportunities each of these parks presents. The parks have the potential to become significant amenities for the local community and for visitors. Dunphy Park has strong connections to both downtown and the waterfront and could become a source of civic pride. Southview Park, with its spectacular San Francisco views and location in a residential community, is a unique public space that has the potential to be transformed into a cherished community resource. There are three key areas where our team would provide a benefit to the City for both of these projects: Placemaking, Recreation, and Community.

Placemaking

Both park sites are about creating new environments for park users as well as acknowledging the unique potential of each site. Strengthening Dunphy Park's connection to the Sausalito waterfront and to the Bridgeway corridor is critical to the project's success. Addressing hillside issues, exploiting the world class views, and maximizing uses at Southview Park are equally important. The re-designs of these parks are an opportunity to enhance their 'sense of place' as parks while still meeting the needs of the recreational community. We are landscape architects with the experience to develop plans that represent highest and best use of the sites. Our approach to design goes beyond solving basic functional design problems. Our park designs weave together site specific environmental education elements, ecological elements and recreational components into experiences that help people find a unique connection to their environment. We will approach the designs with this philosophical approach.

Recreation

Sausalito is a city with many active residents, families, and visitors. The City's parks and waterfront can serve as a resource not just for the surrounding neighborhoods but also for all of residents and visitors to the City. The existing facilities are aging and don't reflect the current image of the City. Recreational needs must be evaluated in light of demographic and trend changes. Our team will approach programming with an analysis and exploration of recreational opportunities that may not have been previously considered.

Community

Our experience in park design and planning shows that people are committed to community-based design processes and are passionate in their views. Giving park users a voice and a sense of involvement in the planning process ensures successful outcomes. We propose a public outreach process that will engage all the groups affected by the design including all groups may emerge as part of the process.

ROYSTON HANAMOTO ALLEY & ABEY

225 Miller Avenue, Mill Valley, CA 94941 T 415 383 7900 F 415 383 1433 www.rhaa.com

RHAA is a recognized leader in working with communities to achieve consensus on controversial projects and has a long history of successful park and public space projects. We have a proven process that brings together diverging opinions. Our work with the City of South Lake Tahoe on the El Dorado Beach lake front park resulted in numerous design awards for the City. We are currently working with the City of Hayward to create a central plaza and park that will become the civic open space for the City. We are also completing a park master plan for Stafford Lake Park for Marin County which includes a variety of recreational features. All of these projects had extensive community outreach as well as a strong collaborative spirit with our clients.

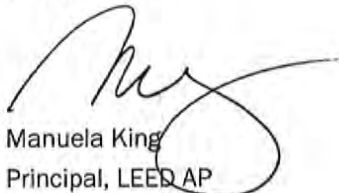
While we allow ourselves to dream big, we are sensitive to project budgets and always consider the cost repercussions to design decisions. We are flexible in our approach and committed to working with you to refine the project approach, scope and design as needed to meet the City's vision for these special parks.

I would act as Principal-in-Charge and lead designer for the project. Jacob Millard would be actively involved as the Project Manager. Assisting us would be a dedicated staff designer with strong experience in community outreach, park design and environmental considerations. We are a firm of 30+ and have the flexibility and resources to handle the demands projects of this scope. We have selected subconsultants for their experience with projects of this nature and our proven working relationship. Our Mill Valley office location will allow us to be available on short notice to meet with the City and visit the project sites.

Our mission is to create beautiful environments that enhance the communities in which they exist. We create memorable parks that engage all the senses, create opportunities for education and recreation and serve as the symbolic 'hearts' for their communities.

If you would like additional information on our firm, please don't hesitate to give us a call.

Sincerely,



Manuela King
Principal, LEED AP
manuela@rhaa.com



contents

Firm Profile	1
Project Understanding and Approach	2
RHAA Qualifications	4
Team Organization and Qualifications	12
Meeting Milestones and Declaration of Non-Affiliation	19
Appendix	
Project Team Resumes	

Firm Profile

Background

Throughout its 58 year history, RHAA has held a commitment to creating places that enrich the fabric of their communities. Whether working in the heart of a city or in a pristine natural environment, the firm strives to find the spirit of the place and weave together history, nature, human relationships, stories, art, environment and culture to create unique and beautiful landscapes. We facilitate a design and visioning process to enable clients to see their ideas become reality. Numerous national and local design awards validate the high quality and success of this work. Testament to our high standard of service is the fact that a high percentage of our work comes from repeat clients.

Qualifications

Our 31 person landscape architecture design and planning firm with offices in Mill Valley and San Francisco has the capability to assist in multiple projects with tight deadlines. RHAA is certified by the state of California and the federal government as a Small, Women-Owned and Disadvantaged Business Enterprise. RHAA has developed particular expertise in working with local, state and federal agencies and their staff, in conducting public meetings and community workshops, in managing multidisciplinary teams, in meeting construction budgets and management requirements, and in preparing construction documents. Staff allocation remains flexible in order to be able to meet the needs of diverse clients at all times.

Collaborative Design

We specialize in a collaborative design and visioning process that engages clients and stakeholder groups with the design team – creating a dialogue where the needs and opportunities of the project are explored. We use sketches, drawings, and three-dimensional computer models to help clients envision design ideas, and we prepare detailed design and construction documents that bring these visions to reality.

Unique Qualifications

Our team brings unique qualifications for the Dunphy and Southview Parks. We have extensive experience working with local communities and are a leader in sustainable site design. We are sensitive to the needs of local communities in creating culturally relevant and environmentally sensitive public spaces. This experience includes local projects in Sausalito, Marin County, and throughout the Bay Area and California. We strive to build trusting relationships with our clients and constituent communities. As an example, at Mission Dolores Park in San Francisco, a very active local community was at odds with the SF Recreation and Park Department and the planned renovation of the park. RHAA successfully engaged the community during the planning process and the biggest community critics became the project's most vocal supporters. We have numerous projects with similar success stories.

LEGAL NAME

Royston Hanamoto Alley & Abey

BUSINESS TYPE

Landscape Architects and Planners

LEGAL STATUS

RHAA is a California corporation in business since 1958. Incorporated in 1967.

MILL VALLEY OFFICE - PRINCIPAL PLACE OF BUSINESS/OFFICE WHERE WORK WILL BE CARRIED OUT

225 Miller Avenue
Mill Valley, CA 94941

POINT OF CONTACT

Manuela King, LEED AP
Principal in Charge
415.383.7900 T
415.383.1433 F
manuela@rhaa.com

TAX IDENTIFICATION NUMBER

94-1649892

Project Understanding and Approach

Dunphy Park

Dunphy Park is an important component of Sausalito's publicly accessible waterfront experience. It has the potential to serve as a community heart, the site of local festivals and civic gatherings. Its connection to the bay and proximity to highly developed surrounding community offer opportunities that inspire RHAA. We understand the Friends of Dunphy Park have undergone an extensive Master Planning process that has resulted in an approved plan. We imagine that plan as the springboard for further design refinement to make this park a place of pride in the Sausalito park system.

As part of our approach we would develop a detailed understanding the process to date, of connections to the downtown, the Bridgeway corridor, adjacent residential communities, and to the waterfront. We would work with adjacent residents, business owners, boaters, schools and the City as required to develop a park that meets everyone's needs.

Southview Park

Southview Park is a hidden gem in the City of Sausalito's park system. It has outstanding views to San Francisco and the Bay. Its hillside site and failing infrastructure is challenging but also presents unique design opportunities. The existing tennis court, basketball court and playground are degraded and the retaining walls are failing. A complete vision for the renovation of this park is critical.

The design process we envision for Southview Park will collaboratively engage the city, stakeholders and the community; and consider a range of options, from renovation of existing facilities to re-imagining a completely new program and a new design for the park.

The following Scope of Services outlines our approach for the project. We have included detailed tasks that we believe will be required to gain community consensus for a design, but were not necessarily outlined in the City's RFP. These include a series of focus group meetings with key stakeholders prior to the first public meeting. These stakeholder meetings will allow us to build a rapport and understanding with key stakeholders and groups. We will work with the City to identify who these groups might be – adjacent residents, property owners, basketball players, tennis players, mothers clubs, dog owners, etc. This strategy allows for a smoother consensus building process.

Both Projects

Both parks have the potential to become a model for sustainable public spaces at the bay edge and to nourish the spirits of the park users through contact with nature and natural systems – spaces to support community events and recreation, thoughtful designed stormwater control, enhanced habitat, materials and features that capture and utilize natural energy, and elements to educate park visitors.

We anticipate regular communication between our project manager and the City project manager to ensure a successful project. We are a local firm with a strong commitment to our community and will make this project a high priority. We have the resources and capacity to handle one or both projects simultaneously with no staffing issues.

rhaa



Bridgeway to Ferry Landing, Sausalito



Stafford Lake Master Plan, Novato



San Mateo Shoreline Parks



El Dorado Beach, South Lake Tahoe

RHAA Relevant Experience

Stafford Lake Master Plan

Novato, CA

On behalf of Marin County Parks, RHAA is preparing a master plan for Stafford Lake Park, a 139-acre regional park three miles west of Novato. Considered one of the county's flagship facilities, the park features picnic and event space, fishing, open lawn, disc golf, and other recreational facilities. RHAA is tasked with taking a fresh look at the park's visioning, expanding upon the park's inherent qualities while adding programmatic, recreational, and environmental value for the park's growing and evolving demographics. Working with the County, RHAA will also conduct extensive community outreach to develop a comprehensive master plan that will improve connectivity, expand programmatic opportunities, and explore innovative elements to enhance park users' experience.

OWNER

City and County of Marin

OWNER REFERENCE

Nancy Peake, Senior Landscape Architect
npeake@marincounty.org
 415.473.2865

PROJECT DATES

Design - 2014

PROJECT SIZE

139 Acres

PROJECT COST

Design: \$177,330

Construction: N/A



RHAA Relevant Experience

El Dorado Beach at Lakeview Commons

South Lake Tahoe, California

RHAA was the competition winner for this 56-acre civic waterfront park in South Lake Tahoe. The site is located on the lakefront with sweeping vistas of the lake and mountains. The civic park will serve as the community hub and primary outdoor civic space for the City of South Lake Tahoe. A large beach and boat launch area will be redesigned to improve access to the lake. RHAA's design concept includes a rejuvenated waterfront with terraced seating areas, a community fire pit, a small boat storage building and food concession, and an elevated walkway for viewing the lake. A themed campground with group fireplace hearths and small "green" buildings provide an alternative camping experience on the site. Water quality basins are designed to process all storm water runoff. An interpretive walk teaching about the natural and cultural history of the site provides an amenity for local schools as well as lake visitors. Designed to enhance the natural beauty of the area, the project brings together the vision of the city, county and community.

OWNER

City of South Lake Tahoe

OWNER REFERENCE

Raymond Lacey
Program Coordinator
(retired - okay to contact)
530.318.8421

PROJECT DATES

Design: 2008
Construction: 2012

PROJECT SIZE

139 Acres

PROJECT COST

Design: \$1.2M
Construction: \$4.5M



RHAA Relevant Experience

Marin Montessori

Corte Madera, California

RHAA is working with Marin Montessori, a private K-8 school located in Marin County. The school is developing an expanded elementary campus adjacent to its existing campus. RHAA is working with Pfau Architects and the school faculty and administration to create a rich, Montessori based outdoor learning environment. The design includes a nature based play area located adjacent to the Bay shore, multiple edible gardens, outdoor classrooms, a meditation garden and a series of decks and seating terraces. The project is in the very early stages of design.

OWNER

Marin Montessori School

OWNER REFERENCE

Deborah Snyder
Director of Finance
415.924.5388
dsnyder@marinmontessori.org

PROJECT DATES

Design: January - December 2016
Construction: 2017

PROJECT SIZE

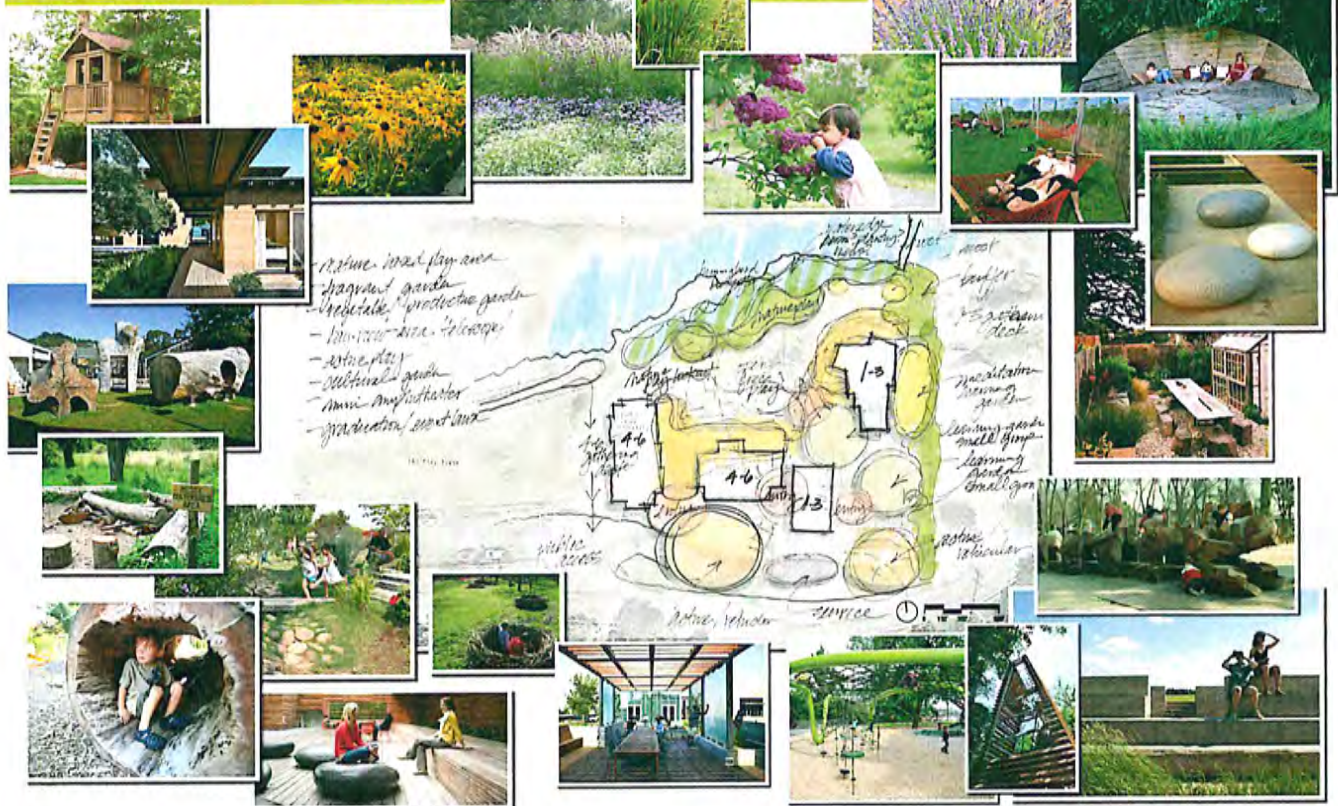
45,000 sf

PROJECT COST

Site Design: \$57,614
Construction: TBD

Marin Montessori School

CONCEPT PLAN



RHAA Relevant Experience

George “Rocky” Graham Park

Marin City, California

George Rocky Graham Park is an approximately 1.2 acre community park in Marin City funded by the State of California Proposition 84 bond act. RHAA worked in partnership with the Trust for Public Land, Marin Grass Roots, and Mack5 Construction as well as with the residents of Marin City to develop a park that reflects the needs, spirit and history of the community. The new park features a variety of elements, including a tot playground, school-aged playground, adult fitness activities, play field, amphitheater with stage, game tables, and barbeque picnic areas. The history of the community is being celebrated by a large mural designed by artist Nancy Peach to show the history of the community from Miwok habitation to current times.

The park was designed for long term sustainability and reduced maintenance. The park incorporates features to reduce water consumption including low flow bathroom fixtures, drought tolerant planting, low flow drip irrigation and a synthetic turf field. The play equipment and site furnishings were chosen for their durability and recycled material content. Stormwater is contained on site by infiltration basins/rain gardens.

OWNER

Marin City Community Services District

OWNER REFERENCE

Johnathan Logan
General Manager
jlogan.mccsd@gmail.com
415.332.1441

PROJECT DATES

Design - 2014
Construction - 2015

PROJECT SIZE

1.2 Acres

PROJECT COST

Design: \$330,891
Construction: \$3.7M



RHAA Relevant Experience

Playground at Martin Luther King Park

Sausalito, California

RHAA worked with Lycee Francais de San Francisco, a French American School, the City of Sausalito and EHDD architects to renovate a publicly owned facility into a state-of-the-art campus for preschool through 5th grade students, faculty and staff. The first phase of work, completed in September of 2013, saw the renovation of three existing classroom buildings, various site improvements throughout the 2-acre campus and the construction of a 6,000 square foot playground for the preschool program. Major accessibility improvements were made throughout the campus and the construction of a 13,000 square foot Kindergarten through 5th grade playground. The K-5 playground was developed for use by both the school and the general public during non-school hours.

OWNER

Lycee Francais de San Francisco

OWNER REFERENCE

Elizabeth Chaponot, Ph.D.
Chief Administrative Officer
415.661.5232 ext. 1791

PROJECT DATES

Design - April 2013 - May 2014
Construction - May-Sept. 2014

PROJECT SIZE

24,000 sf

PROJECT COST

Design: \$173,914
Construction: \$800,000



RHAA Relevant Experience

Sonoma Academy

Santa Rosa, CA

RHAA is working with WRNS architects, Sherwood Design Engineers and Integral Group to develop new Grange and Theater buildings, plazas and student spaces, productive teaching gardens and orchards at Sonoma Academy in Santa Rosa. The 34-acre campus is surrounded by over 1,000 acres of preserved open space and sits the foot of Taylor Mountain.

An innovative approach to stormwater and greywater management has been developed for the main campus entry: stormwater is filtered and stored to reduce flows to the neighboring creek; rainwater is filtered, stored and reused to reduce irrigation demands; and building greywater is filtered through an open air living machine. The new Grange building program includes a flexible indoor-outdoor cafeteria space, maker spaces, and administration offices. The building is being designed for certification as a LEED project, under the Living Building Challenge, and under the International WELL Building Institute certification system. The project will have a ecologically designed landscape and green roof and will include productive edible gardens to support learning and health.

OWNER

Sonoma Academy

OWNER REFERENCE

Derice Hogle
Director of Finance & Operations
derice.hogle@sonomaacademy.org
707.636.2462

PROJECT DATES

Design - Dec 2015 - June 2016
Construction - June 2016 - Sept 2017

PROJECT SIZE

121,000 sf

PROJECT COST

Design: \$1.3M
Construction: estimated \$23M, first phase only



RHAA Relevant Experience

Hayward Library & Heritage Plaza Arboretum

Hayward, California

RHAA is working with the City of Hayward and Noll & Tam Architects on a new City library and the renovation of the City's central park. RHAA developed multiple concepts for the renovation of the 3-acre park to increase activation and create a civic open space with a strong connection to the adjacent City Hall. The design team led community meetings and presentations to generate enthusiasm and consensus on the design direction. Park amenities include a children's garden, central event lawn and stage, arboretum, historical walk and event plazas. Cultural events, farmer's markets, art fairs, civic celebrations and everyday park use will make the park the centerpiece of the downtown civic complex. Rainwater will be harvested from the library, the adjacent parking structure, and the park, held in a storage facility located within the large event lawn in the footprint of the existing library in the center of the park to be replaced with a large event lawn. This rainwater will be utilized for building uses and site irrigation. The project is being developed to comply with the Bay-Friendly Landscape Guidelines.

OWNER

City of Hayward

OWNER REFERENCE

Sean Reinhard
Director of Libraries and Community Services
sean.reinhart@hayward-ca.gov
510.881.7956

PROJECT DATES

Design - 2015
Construction - Anticipated
Completion 2017

PROJECT SIZE

4.5 Acres

PROJECT COST

Design: \$271,728
Construction: \$65.7M



RHAA Relevant Experience

Bayer Neighborhood Park and Garden Master Plan

Santa Rosa, California

The 5.84 acre site was purchased from the Bayer family in the late summer of 2007 with the intent of creating a neighborhood park that would provide opportunities for hands on environmental education, a community garden, active recreational uses, and various programs and events, while promoting conservation and sustainability. The master plan for the park was created in response to the needs expressed through a community planning process and the program developed by the partnership between the local nonprofit group LandPaths and the City of Santa Rosa Recreation, Parks and Community Services Department. The master plan includes a central plaza, children's play area, skate park, new community hall, an environmental education center, kitchen pavilion, and the renovation of the existing livestock barn. The kitchen pavilion provides a variety of cooking options for a variety of different cultures: a Chinese traditional stove, a Mexican stove, an Eritrean mogogo stove, and a traditional American BBQ pit. The plan integrates park and open space areas with the existing community garden, and working farm program, while making the best use of the site and creating a much needed new gathering space for the community.

OWNER

City of Santa Rosa

OWNER REFERENCE

Jennifer Phillips
Assistant City Manager
jphillips@srcity.org
707.543.3021

PROJECT DATES

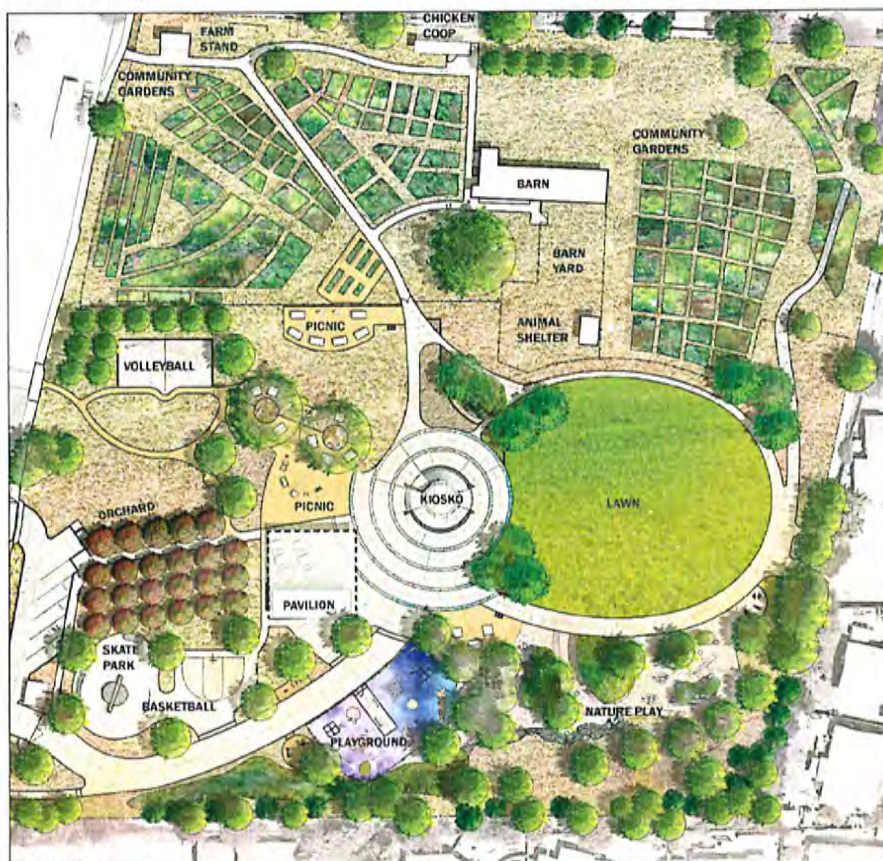
Under Construction

PROJECT SIZE

6 Acres

PROJECT COST

Design: \$1,352,404
Construction: \$6.2M



RHAA Relevant Experience

Mission Dolores Park Rehabilitation Project

San Francisco, California

Mission Dolores Park is a significant cultural landscape and the most intensely used park in San Francisco. RHAA led a multi-disciplinary team for a \$20 million rehabilitation of the park. Character defining features of the historic landscape were preserved, and new facilities were sited to minimize impacts. Improvements included accessibility (a challenge at this hillside park), two new restrooms, a park maintenance facility tucked underneath a new sport court, and rehabilitation of the existing landscape, drainage systems, and irrigation. The project started with an intensive community participation phase, including multiple steering committee meetings, public workshops, and considerable community outreach. Gathering input and data from these dedicated community members was essential in creating a plan that received broad community support.

OWNER

City of San Francisco

OWNER REFERENCE

Jacob Gilchrist
City Project Manager
jacob.gilchrist@sfgov.org
415.581.2561

PROJECT DATES

Design - 2013
Construction - 2015

PROJECT SIZE

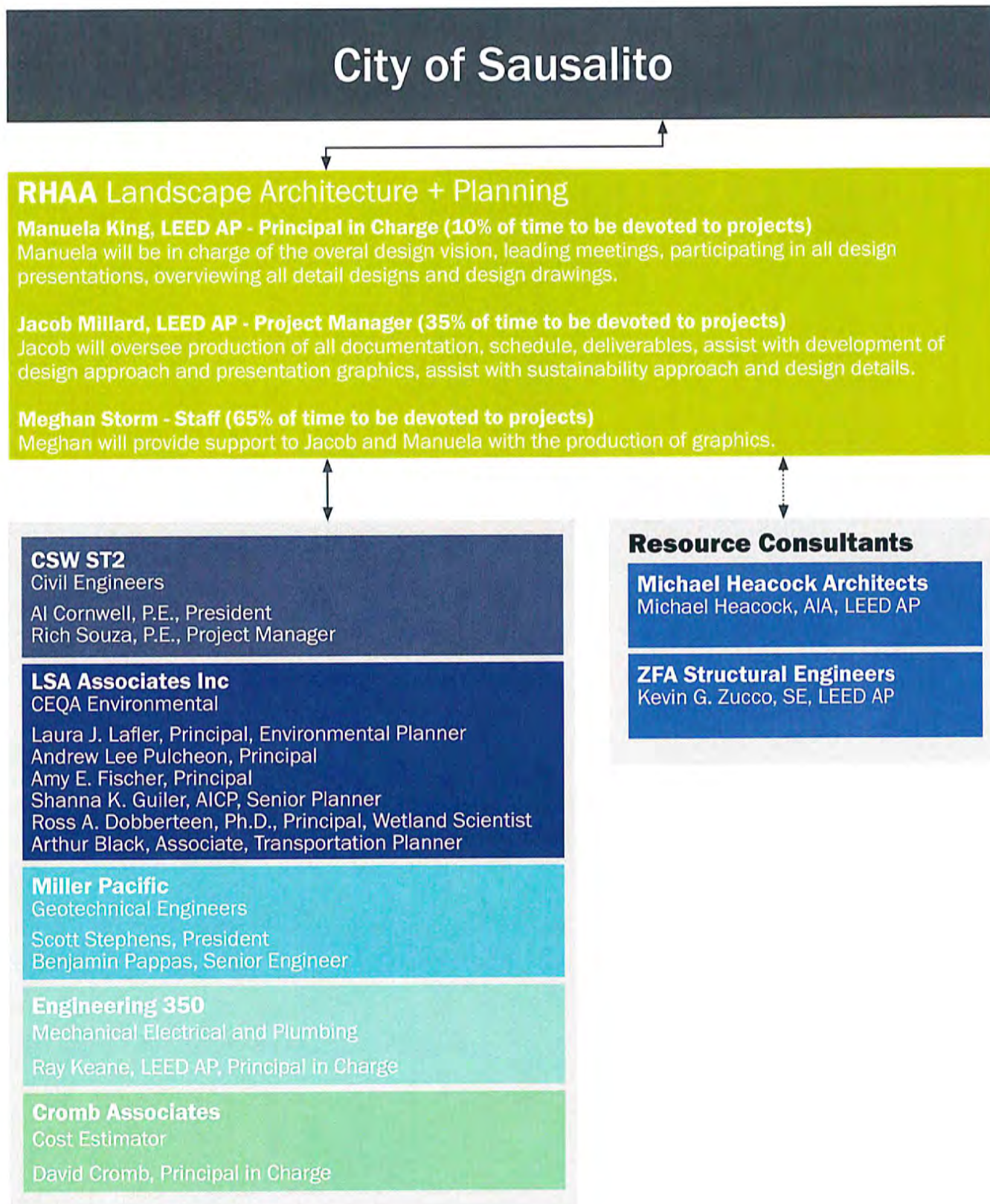
13.7 Acres

PROJECT COST

Design - \$250,000
Construction - \$12M



Team Organization



**Please see appendix for project team member relevant experience.*

Subconsultant Qualifications

PARKS EXPERIENCE

PARADISE BEACH COUNTY PARK, MARIN COUNTY PARKS

Tiburon [Al Cornwell, PIC, Rich Souza, PM]

CSW|ST2 is leading a team of consultants to provide the County of Marin, based on the County's preferred design concept, required land survey work, 10-15% design drawings (plans, sections, details, etc.), specifications and other documents necessary to achieve regulatory agencies acceptance, CEQA requirements and potential grant funding requirements.

PICKLEWEED PARK - San Rafael [Al Cornwell, PIC, Rich Souza, PM]

This project involved the redesign and enhancement of an existing high-use recreational area, adjacent to an environmentally sensitive habitat. A low, receding fence line, bermed area and planting buffer were used to protect the fragile habit from adjacent recreational activity. Additional planting, seating, pathways, barbecue and picnic areas were designed to accommodate large crowds in this culturally diverse area of San Rafael.

ROCKY GRAHAM PARK - Marin City [Al Cornwell, PIC, Rich Souza, PM] CSW|ST2 provided civil engineering services for the redevelopment of the Rocky Graham Park. The design involved significant grading, active play areas and areas for respite, a large play lawn, amphitheater-like seating and a performance stage, a restroom, water-efficient landscaping, and art and history integrated into site features. The project was completed in 2015.

STAFFORD LAKE BIKE PARK, MARIN COUNTY PARKS -

Novato [Al Cornwell, PIC, Rich Souza, PM]

CSW|ST2 is providing civil engineering services for the Bicycle Park Master Plan and trails design for Stafford Lake Park. Our work involved utilities research, surveying services, grading and drainage plan, erosion and sediment control plan, utility plan, storm water pollution prevention plan (SWPPP), and structural engineering for shade structures, an ADA compliant bridge and a restroom pad.

MANNION KNOLLS PARK - Petaluma [Al Cornwell, PIC]

CSW|ST2 provided site and context analysis and development drawings for a community park in West Petaluma. The 20 acre Mannion Knolls Park includes a network of short hiking trails as well as some designated active spaces for the residents of the neighborhood.

TENNESSEE VALLEY/MANZANITA PATHWAY

Marin County, California [Al Cornwell, PIC, Rich Souza, PM]

CSW|ST2 provided design and consulting services for upgrading 3,200 LF of pathway to meet Class I Standards. The pathway incorporates boardwalks, levee type pathways, cantilevered decks, roadside circulation elements, and a pedestrian bridge with a 100 ft. span.

COUNTRY CLUB VISTA COMMUNITY PARK - Richmond

[Al Cornwell, PIC] Located on San Pablo Bay in north Richmond, this 6 acre community park is designed as a gathering place for events, play, and active recreation. Park amenities include baseball and soccer fields, a playground, patio and picnic areas, parking, promenade paths, bike path, custom arbor and plantings.

CSW | ST2

CSW/Stuber-Strooh Engineering Group, Inc.



City of Sausalito, Dunphy and Southview Parks

LSA RELEVANT PROJECTS



Moorland Neighborhood Park IS/MND, Sonoma County

Prepared an IS/MND for the Moorland Park Master Plan, a proposed neighborhood park in unincorporated Sonoma County. LSA addressed potential impacts to cultural resources and biological resources, air and noise impacts associated with construction activities, traffic/circulation impacts and water quality/stormwater impacts.

Client: Sonoma County Regional Parks (subconsultant to RHAA)

Key Staff: Laura Lafler, Shanna Guiler, Dan Sidle, Andrew

Pulcheon, Amy Fischer, Arthur Black



Bayer Neighborhood Park and Gardens IS/MND-Santa Rosa

Assessed site conditions, identified key biologic and cultural resources and constraints a neighborhood park on a former ranch site. LSA prepared CEQA documentation. City adopted the IS/MND in April 2011. Prepared permit applications for the U.S. Army Corps of Engineers, Regional Water Quality Control Board, and the California Department of Fish and Wildlife. (Section 2018 for CTS).

Client: Santa Rosa Recreation and Parks (subconsultant to RHAA)

LSA Staff: Laura Lafler, Shanna Guiler, Tim Lacy, Andrew

Pulcheon, Amy Fischer



Nagasawa Community Park - Santa Rosa

Assisted the City of Santa Rosa in planning for 32.8-acre park in the northeastern portion of the City. LSA prepared a biological survey of the site, including permits, and prepared an Initial Study.

Client: Santa Rosa (subconsultant to Dillingham Associates)

LSA Staff: Laura Lafler, Sean Lohmann

Hiddenbrooke School and Park IS/MND - Vallejo

Prepared an IS/MND for a proposed elementary school and park located in the northeastern portion of the City of Vallejo in Solano County. Addressed potential impacts to natural resources, primarily California red-legged frog that are known to occur in Sulphur Springs Creek, as well as loss of agricultural land and wildlife movement corridors. The Vallejo City Unified School District adopted the IS/MND on December 10, 2008.

Client: City of Vallejo

LSA Staff: Laura Lafler, Shanna Guiler, Andrew Pulcheon, Amy Fischer



Martinez Waterfront Park - Martinez

Providing environmental support for the proposed renovation of the existing Martinez Waterfront Park, an existing 31-acre park at the north edge of Martinez. Conducted a review of biological and cultural resources to assist the project team in assessing potential development constraints. Preparing an IS/MND for the proposed project, consistent with the City of Martinez environmental review process. Will also consult with the regulatory agencies and prepare the necessary permit applications for project approval.

Client: City of Martinez (as a subconsultant to Dillingham Associates Landscape Architects)

Key Staff: Laura Lafler, Shanna Guiler, AICP, Sean Lohmann



Stafford Lake County Park Master Plan IS/MND
Novato, CA

LSA prepared constraints analysis for a Master Plan for the existing 139-acre Stafford Lake County Park in northern Marin County. LSA identified sensitive resource areas and prepared an IS/MND to evaluate the potential environmental impacts of the enhanced park features.

Client: Marin County Parks (subconsultant to RHAA)

Key Staff: Laura Lafler, Shanna Guiler, Clint Kellner, Andrew Pulcheon, Neal Kaptain, Amy Fischer, Arthur Black



Stafford Lake Bike Park IS/MND
Novato, CA

LSA prepared the IS/MND for the 17-acre Stafford Lake Bike Park within the existing Stafford Lake County Park. Key issues: impacts to native oak trees, creek impacts from proposed crossings, erosion and sedimentation from construction and operation, parking and circulation, and visual changes to the existing park. Marin County adopted the IS/MND and approved the project in November 2011.

Client: Marin County Parks

Key Staff: Laura Lafler, Shanna Guiler, Clint Kellner, Andrew Pulcheon, Neal Kaptain, Amy Fischer,



Inkwells Bridge Crossing IS/ND - Marin County

LSA prepared permit applications; grant applications for the Open Space District; and completed environmental documentation, including a Caltrans NES and CEQA Initial Study for the proposed pedestrian, bicycle and equestrian bridge crossing of San Geronimo Creek to connect to a multi-use trail through Samuel P. Taylor State Park. LSA conducted biological assessments for spotted owl, Coho salmon and

freshwater shrimp and cultural resource studies.

Client: Marin County Parks

Key Staff: Laura Lafler, Shanna Guiler, Andrew Pulcheon, George Molnar, Tim Lacy



Miller Avenue Streetscape Project - Mill Valley

Prepared CEQA documentation and regulatory permit applications for the Miller Avenue Streetscape Project. Major issues included: biological resources, cultural resources, traffic, and air quality.

Client: City of Mill Valley (subconsultant to BKF Engineers)

LSA Staff: Laura Lafler, Shanna Guiler, George Molnar, Sean Lohmann, Andrew Pulcheon, Amy Fischer



Magical Bridge Playground - Palo Alto

LSA prepared CEQA environmental documentation for the Magical Bridge Playground Project. The IS/MND addressed short-term, construction related noise and air quality impacts; tree removal; special status species issues; and potential cultural resources impacts.

Client: City of Palo Alto (as a subconsultant to RHAA)

LSA Staff: Laura Lafler, Shanna Guiler, George Molnar, Sean Lohmann, Andrew Pulcheon, Amy Fischer

Similar Past Projects

MILLER PACIFIC
Engineering Group

Novato
504 Redwood Blvd., Suite C
Novato, CA 94947
415 382-3444

Rocky Graham Park – Marin City, California

Engineer: Benjamin S. Pappas

Rocky Graham park is a 1-acre community park that was constructed on a dilapidated vacant parcel. The park improvements included site retaining walls, synthetic turf public areas, concrete pedestrian paths, and play areas. Development of the site required significant site grading to raise grades.

San Francisco City Fields – San Francisco, California

Engineer: Scott A. Stephens

We designed five synthetic turf multi-use playfields field throughout the City.

San Francisco State Multi-Use Field– San Francisco, California

Engineer: Benjamin S. Pappas

The San Francisco State Multi-use field consisted of a 2-acre synthetic and natural turf play and picnic areas. The fields were constructed on saturated soils that required cement treatment to allow construction.

Sycamore Valley Park Bocce Courts – Danville, California

Engineer: Benjamin S. Pappas

Sycamore Valley Park Bocce Court project included constructing four additional courts adjacent to the existing courts and pergola shade structures. The project was constructed on expansive soils requiring lime treatment to prevent seasonal movement of the bocce courts.

Pickleweed Park – San Rafael, California

Engineer: Scott A. Stephens

Pickleweed Park is a 5-acre natural turf park located on reclaimed marshland which includes Bay Mud deposits. The park construction required placing fill to raise grades above the predicted flood elevation. We performed settlement analyses to determine the amount of fill required to assure grades would remain above the flood elevation over the design life of the park.

Firm Profile

We are a collaborative, interdisciplinary firm of innovative building services engineers and consultants. Our goal is to seek solutions that find an optimum balance between environmental benefit, social well-being and financial viability both for the client and the global community. In every project, we encourage the architectural and engineering teams to understand and explore the unique challenges presented by the design brief. We use energy modeling in the early stages of design to communicate concepts and facilitate understanding of the interplay of daylight, solar radiation, thermal comfort, ventilation, and acoustics. We understand that early collaboration with owner, architect and wider design team and community will lead to successful and enduring buildings and communities valued by all stakeholders. Our building system recommendations result from this collaboration and respond to the desired architectural expression. Passive and natural cycle strategies are explored early to minimize reliance of active systems. Carbon emission and life cycle implications of building systems and material choices are all evaluated in the design process. Water and waste cycles are considered in conjunction with energy and emissions in our drive to create and retrofit zero energy, zero waste and water independent buildings and communities.

Engineering 350 is a MEP firm with a wide variety of project type experience. We deliver innovative yet practical solutions through the combined skills of mechanical, electrical and plumbing engineers, and energy analysts. Our services include:

- Building Services Engineering
- Sustainable Economic, Social and Environmental Masterplanning
- Building Simulation
- Facade Optimization
- Building Information
- Modeling Renewable Energy
- Systems Research and
- Development Sustainable
- Assessment Carbon
- Assessment
- LEED Consultancy

Selected Projects

Family House Roof Garden Roof, San Francisco, CA ; Staff Members: Ray Keane Peter Balint, Kim Zylker
 De Young Museum in Golden Gate Park, San Francisco, CA. : Staff Members Ray Keane Peter Balint
 Guadalupe Park Way San Jose, CA. Staff Members, Ray Keane
 San Francisco Botanical Garden, San Francisco, CA Staff Member Ray Keane

256 Moulton Street, San Francisco, CA 94123 • Tel: 415-328-1450 • www.engineering350.com



CROMB ASSOCIATES

CONSTRUCTION COST CONTROL AND MANAGEMENT

51 Bay Vista Drive - Mill Valley, CA 94941

South Lake Tahoe 56-Acre Master Plan, South Lake Tahoe, California

The site is located on the lake front with sweeping vistas of the lake and mountains. The civic park serves as the community hub and primary outdoor civic space for the City of South Lake Tahoe. A large beach and boat launch area will be redesigned to improve access to the lake. RHAA's design concept includes a rejuvenated waterfront with terraced seating areas, a community fire pit, a small boat storage building and food concession, and an elevated walkway for viewing the lake. A themed campground with group fireplace hearths and small 'green' buildings would provide an alternative camping experience on the site. Water quality basins are design to process all storm water runoff. An interpretive walk teaching about the natural and cultural history of the site provides an amenity for local schools as well as lake visitors. The project also includes a new library, senior center, historical museum and outdoor forest amphitheater.

Budget: \$5,500,000

Construction Cost: \$5,147,378

Completion Date: 2012

Antioch Prewett Park Improvements, Antioch, California

RHAA along with the Aquatic Design Group integrated the design of a new sprayground water play feature into the existing 100 acre Prewett Water Park. The focus age group is 0 to 5 years old and includes several "all-abilities" amenities. As a standalone facility, the 3,000 square foot splash pad/spray park is located south of the other water play features adjacent to a shaded picnic facility. Within the spray pad area there are 13 play features. Grass areas for sitting and sand areas for play surround the splash pad. In addition to the new sprayground water feature, RHAA designed an all-abilities, multi-age group playground located outside the fenced area of the Water Park near the parking lot with the goal to make this feature interconnect to some of the other facilities in the area. The fenced 6,000 square foot area, contains several all-abilities play structures placed on resilient matting in a colorful stream-like design.

Budget: \$2,000,000

Construction Cost: \$1,623,267

Completion Date: Ongoing

Bayer Neighborhood Park and Garden Master Plan, Santa Rosa, California

The 5.84 acre site was purchased from the Bayer family in the late summer of 2007 with the intent of creating a neighborhood park that would provide opportunities for hands on environmental education, a community garden, active recreational uses, and various programs and events, while promoting conservation and sustainability. The master plan for the park was created in response to the needs expressed through a community planning process and the program developed by the partnership between the local nonprofit group LandPaths and the City of Santa Rosa Recreation, Parks and Community Services Department. The master plan includes a central plaza, children's play area, skate park, new community hall, an environmental education center, kitchen pavilion, and the renovation of the existing livestock barn.

Budget: \$6,200,000

Construction Cost: \$4,840,000

Completion Date: Ongoing

Burlingame Avenue Streetscape, Burlingame, California

In coordination with planned utility improvements, the Burlingame Avenue Streetscape Improvements Project enhances the experience of the street between El Camino Real and California Drive for visitors and residents alike, creating a memorable street for shopping, dining and strolling. Informed through an elaborate public and stakeholder outreach process, Green infrastructure improvements include: stormwater planters at intersection bulb-outs; colorful drought tolerant planting; LED roadway and pedestrian streetlights that provide ample lighting for nighttime dining and shopping; festive low voltage LED twinkle lights in trees; and a multicolored concrete paver system.

Budget: \$16,700,000

Construction Cost: \$15,900,000

Completion Date: 2014

T (415) 388-1994 - F (415) 388-1996 • crombassoc@comcast.net • www.cromb-associates.com

Schedules and Meeting Milestones

Developing Schedules and Communication Plan

RHAA's strong leadership and project experience combined with the experience of our team of professional consultants will assure the city's schedule is delivered in a timely manner and that the deliverable will be beautiful and reflect the inherent spirit of Sausalito. Our consultant team members have worked together in the past and each of us have proven track records working collaboratively on complex public projects.

Scheduling and Project Management

A project management plan will be developed to anticipate key issues and determine a process and schedule for resolution. It is expected that questions and issues will arise through the course of the projects and RHAA will track all open issues and prioritize responses with the City's project manager and the consultant team. We will work with you to solidify realistic, detailed project schedules and milestones for each phase of the projects. To control and maintain project schedules, we plan thoroughly, focus our efforts on meeting deadlines, and supply ongoing communication with stakeholders, consultants and contractors. Major milestones for public projects needs to address the City's Council and Commission schedules. Public outreach meetings need to be scheduled at convenient times for the team to receive the critical input desired; whether on specific nights, weekends, etc. RHAA tracks project progress on a bi-weekly basis –evaluating internal and sub-consultant labor and expenditures along with progress towards deliverables to ensure that projects remain on budget.

Declaration of Non-Affiliation

RHAA declares, under penalty of perjury, that no employees are affiliated with, nor have any financial interest in, any manufacturer, distributor, supplier or other company connected with RHAA's recommendation and/or installation of any products or services as required by the City.

Appendix



Manuela King

Landscape Architect, LEED AP
Principal in Charge

EDUCATION

University of Oregon, Master of
Landscape Architecture

University of Oregon, Bachelor of
Landscape Architecture

Pennsylvania State University,
Bachelor of Science

CERTIFICATION

Landscape Architect, State of
California #3271

Landscape Architect, State of
Kentucky #734

LEED Accredited Professional US
Green Building Council

ASSOCIATIONS

American Society of Landscape
Architects

AIA Associate Member

Trustee, Marin Horizon School,
2001 - 2006

Chair, Beautification and
Streetscapes Advisory Committee,
Union Square Business Improvement
District, San Francisco

As a Principal in the firm, Manuela King has been instrumental in the design of a wide variety of high-profile projects. These include urban design and planning, park and recreation planning, residential design, and commercial and professional facilities. Her interests include the relationship between art, architecture, landscape architecture and contemporary urban design. She is a strong advocate of sustainable design in all her projects. Over her time with the firm, her work has expanded to include many international projects, including work in Chile, Taiwan, Malaysia, Israel, Korea, the Philippines, China, Australia and Japan.

Select Project Experience

Vina Del Mar Park, Sausalito, California

RHAA developed improvements in collaboration with the City of Sausalito. Design Fee: \$7,410; Construction Cost: Unknown Project Completed: 2013

Lycee Francais de San Francisco, Sausalito Campus, Sausalito, California

Manuela was the Principal in Charge for the renovation of the school playground. Design Fee: \$173,914; Construction: \$800,000, Project Completed: 2014

Bridgeway to Ferry Landing, Sausalito, California

Manuela was Principal in Charge of this project. She worked with the City of Sausalito to study option for developing a bicycle-pedestrian promenade along the waterfront. Design Fee: \$101,255, Project Completed: 2012

Stafford Lake Park Master Plan, Novato, California

Manuela was the Principal in Charge for the master planning efforts of Stafford Lake in Novato. Design Fee: \$177,330, Project Completion: Estimated June 2016

El Dorado Beach Park at Lakeview Commons, South Lake Tahoe, California

Manuela was the Principal in Charge for design through construction administration of El Dorado Beach in South Lake Tahoe. Design: \$1.2M, Construction: \$4.5M, Project Completed: October 2012

San Mateo Shoreline Parks, San Mateo, California

Manuela was Principal in Charge of the Master Plan and construction of the shoreline parks in San Mateo. Design: \$248,000, Construction: \$6.5M, Project Completed: 2005

Hayward's Historic Plaza and Arboretum, Hayward, California

Manuela is Principal in Charge for the design and construction of the new library and central park for the City of Hayward. Design: \$271,728, Construction: \$65M, Project Completion: Anticipated: 2017



Jacob Millard

Landscape Architect, LEED AP
Senior Associate, Project Manager

EDUCATION

University of Washington, Master of Landscape Architecture

University of Washington, Master of Civil & Environmental Engineering

Tufts University, Bachelor of Science, Mechanical Engineering

CERTIFICATION

Landscape Architect, State of California #5497

LEED Accredited Professional US Green Building Council

ASSOCIATIONS

American Society of Landscape Architects

Jacob has over 13 years of experience designing outdoor spaces for clients and communities. His sensitivity to client needs, user experience, and sustainable solutions equals his passion for contemporary site design and place making. Jacob has focused his education and career on understanding and exploring our relationship with natural and built environments; and his background in design, engineering and construction has given him a strong foundation for working with clients, communities and multi-disciplinary teams to facilitate processes within which design can take place.

At RHAA, Jacob has worked on a diverse range of public & private projects; from master planning and conceptual visioning to a wide variety of constructed projects. His work has included urban plazas, streetscapes, and civic spaces; park and recreation projects; health care facilities and corporate campuses; schools and educational campuses; multi-use developments, commercial retail spaces, and residential design.

Select Project Experience

Vina Del Mar Park, Sausalito, California

RHAA developed improvements in collaboration with the City of Sausalito. Design Fee: \$7,410; Construction Cost: Unknown Project Completed: 2013

Lycee Francais de San Francisco, Sausalito Campus, Sausalito, California

Jacob was the Project Manager for the renovation of the school playground. Design Fee: \$173,914; Construction: \$800,000, Project Completed: 2014

Bridgeway to Ferry Landing, Sausalito, California

Jacob was the Project Manager for this project. He worked with the City of Sausalito to study option for developing a bicycle-pedestrian promenade along the waterfront. Design Fee: \$101,255, Project Completed: 2012

El Dorado Beach Park at Lakeview Commons, South Lake Tahoe, California

Jacob was the Project Manager for design through construction administration of El Dorado Beach in South Lake Tahoe. Design: \$1.2M, Construction: \$4.5M, Project Completed: October 2012

Hayward's Historic Plaza and Arboretum, Hayward, California

Jacob is the Project Manager for the design and construction of the new library and central park for the City of Hayward. Design: \$271,728, Construction: \$65M, Project Completion: Anticipated: 2017



Meghan Storm

LEED AP
Staff

EDUCATION

University of Pennsylvania -
Master of Landscape Architecture
Savannah College of Art and Design -
Master of Architecture
Savannah College of Art and Design -
Bachelor of Fine Art Historic
Preservation

CERTIFICATION

LEED Accredited Professional
US Green Building Council

With more than four years of professional experience, Meghan Storm is a well rounded designer with a background in historic preservation, architecture, and landscape architecture. She has worked on a variety of landscape architecture projects including large urban parks and university campus plans. As a landscape and architectural designer, Meghan looks to find 'the heart' or potential of a project, always with the ambition that the built form should positively interact with its historical and cultural context, resulting in unique design solutions.

Select Project Experience

Hayward's Historic Plaza and Arboretum, Hayward, California

Meghan was staff team member for the design and construction of the new library and central park for the City of Hayward. Design: \$271,728, Construction: \$65M, Project Completion: Anticipated: 2017

Prewett Park Improvements, Antioch, California

Meghan was a staff team member for the design of the Prewett Park Improvements which included a new splash pad. Design: \$253,267, Construction: \$1.6M, Project Completion: In Progress

McClellan Ranch Environmental Education Center, Cupertino, California

Meghan was a staff team member for the design of the Environmental Education Center on McClellan Ranch Preserve. Design: \$75,000, Project Completion: In Progress

Stafford Lake Park Master Plan, Novato, California

Meghan is a staff team member for the master planning efforts of Stafford Lake in Novato. Design Fee: \$177,330, Project Completion: Estimated June 2016

George "Rocky" Graham Park, Marin City, California

Meghan was a staff team member for the design for the 1.2 acre George "Rocky" Graham Park in Marin City. Design: \$330,891, Construction: \$3.7M, Project Completion: May 2015

CSW | ST2

Background

Al Cornwell has nearly four decades of experience providing engineering design and project management. He is a graduate of Stanford University, is a licensed engineer in six western states and is LEED® accredited. As President of CSW|ST2, Al Cornwell is responsible for over-all project administration and technical review, as well as taking the lead role managing specific projects. He has managed design and construction of many parks and recreational projects in Marin County and northern California. Al is experienced in all aspects of civil engineering including grading, road and paving design, storm drain hydrology, hydraulic design, writing specifications and knowledgeable of all applicable State and local codes and regulations.

He also is a licensed General Contractor in the State of California, with five years of experience in supervising and estimating construction projects. This combination of design and construction perspectives allows him to bring a unique and valuable insight to civil engineering projects.

Selected Project Experience

- Paradise Beach County Park - Tiburon, California.
- Marin County Parks, Agate Beach Park Improvements – Marin County, California.
- Stafford Lake Bike Park, Marin County Parks - Novato, California.
- Antioch Community Center & Prewett Park - Antioch, California.
- Pickleweed Park Improvements - San Rafael, California.
- Tennessee Valley Multi-Use Pathway - Marin County, California.
- City of Sausalito Multiple Roadway Improvements - Sausalito, California.
- City of Sausalito Downtown Parking Improvements - Sausalito, California.
- Hamilton Pool - Novato, California.
- StoneTree Golf Club - Novato, California.
- Ignacio Boulevard Street Rehabilitation - Novato, California.
- Mannion Knolls Park - Petaluma, California.
- Country Club Vista Community Park - Richmond, California.
- Pointe Marin Senior Housing - Villa Entrada - Novato, California.
- Buck Institute for Age Research - Novato, California.
- Marin General Hospital – Greenbrae, California.
- Marin County Health and Wellness Campus - San Rafael,

AL CORNWELL, P.E. LEED® AP President



Education

M.S., Civil Engineering
Stanford University, Palo Alto, CA,
1972

B.S., Civil Engineering
Stanford University, Palo Alto, CA,
1972

B.A. - Management Engineering
Claremont McKenna College
Claremont, California

Professional Registration

Civil Engineer
CA - RCE #27577
AZ - RCE #12548
CO - RCE #13593
ID - RCE #3894
MT - RCE #5664-E
WA - RCE #18180

General Contractor
CA - License #368026

Memberships

American Council of Engineering
Companies (ACEC) - California -
Member

American Concrete Institute -
Member

CSW/Stuber-Stroeh Engineering Group, Inc.

CSW | ST 2

Background

Richard Souza has 19 years professional engineering experience including ten years of managing projects for public agencies and for private developers. Rich has managed many projects that involved coordination with multiple stakeholders, gaining approvals from multiple agencies and forming consensus from multiple groups of interest. His experience includes ADA design, roadway and parking lot design, multi-use trails design, grading and drainage design, erosion control design, construction management and design team coordination. Rich serves as our office's advocate for Sustainable Design and Business Practices and was instrumental in obtaining our firm's designation as a Certified Green Business in the County of Marin. A summary of his project experience is listed below.

Selected Project Experience

- Paradise Beach County Park - Tiburon, California.
- Marin County Parks, Agate Beach Park Improvements – Marin County, California.
- Stafford Lake Bike Park, Marin County Parks - Novato, California.
- Antioch Community Center & Prewett Park - Antioch, California.
- Pickleweed Park Improvements - San Rafael, California.
- Tennessee Valley Multi-Use Pathway - Marin County, California.
- City of Sausalito Multiple Roadway Improvements - Sausalito, California.
- City of Sausalito Downtown Parking Improvements - Sausalito, California.
- Lawson's Landing Seawall Replacement and Campground Rehabilitation - Dillon Beach, California.
- Bridgeway Boulevard Capital Improvements - Sausalito, California.
- Johnson Street Capital Improvements - Sausalito, California.
- TAM Junction Pedestrian and Bicyclist Pathway Improvements - Marin County, California.
- Aetna Springs Preserve – Pope Valley, California.
- ADA Access for San Rafael City Hall - San Rafael, California.
- Freitas Parkway Las Gallinas Intersection - San Rafael, California.
- Ignacio Boulevard/Highway 101 Interchange Improvements - Novato, California.
- Hamilton Army Airfield Base Reuse - Novato, California.

RICH SOUZA, P.E. QSD / QSP Certified Project Manager



Education

B. S. - Civil & Environmental
Engineering
University of California
Davis, California, 1997

Registration

Civil Engineer
California R.C.E. #67892

QSD/QSP Certificate #01207

CSW/Stuber-Stroeh Engineering Group, Inc.

LAURA J. LAFLERPRINCIPAL
ENVIRONMENTAL PLANNER**EXPERTISE**

Open Space, Resource Management and Recreation Planning
 Site Assessment and Use Feasibility
 Environmental Planning and Analysis
 Local Planning and Entitlements

EDUCATION

University of California, Berkeley, California.
 M.L.A., Landscape Architecture/Environmental Planning, 1980

University of California, Los Angeles, California.
 B.A., Geography / Environmental Studies, 1976

PROFESSIONAL AFFILIATIONS

American Planning Association
 Association of Environmental Professionals
 Land Trust Alliance
 Association of Environmental Professionals
 Former Board Member, The Olompali People, Olompali State Historic Park 2001-2014

PROFESSIONAL RESPONSIBILITIES

Ms. Lafler is an environmental planner with 38 years of professional experience in environmental and land use planning. For parks and trails, her projects include site feasibility studies, resource management plans, infrastructure improvements, and related environmental documentation for both CEQA and NEPA requirements.

PROJECT EXPERIENCE**Moorland Neighborhood Park IS/MND, Santa Rosa, California**

Principal in Charge for IS/MND of a neighborhood park in an unincorporated area of Sonoma County. Key issues include need to serve local neighborhood, potential wetlands, traffic and parking, and noise associated with park events.

Bayer Park Neighborhood Park and Gardens IS/MND, Santa Rosa, California

Project Manager for IS/MND of a neighborhood park in an unincorporated area of Sonoma County. Key issues included need to serve local neighborhood, proximity to elementary school, potential wetlands and traffic associated with park events.

Hudeman Slough Boat Launch IS/MND, Sonoma County, California

For Sonoma County Parks, LSA prepared an IS/MND for proposed improvements to an existing boat launch on Hudeman Slough, including campgrounds and restroom. Key issues included water quality, special status species and wetlands.

Stafford Lake County Park Master Plan IS/MND, Marin County, California.

LSA provided cultural and biological constraints analysis for existing 139-acre regional park; and prepared an IS/MND to evaluate proposed improvements in Park Master Plan. Key issues include sensitive oak woodland and water quality.

Homestead Valley Land Management Plan IS/MND, Marin County, California

Project Manager for IS/MND for Land Management Plan for the lands within Community Service Area 14, known as Homestead Valley. Key issues included fire fuel reduction, native species preservation, and trail and road maintenance.

Stafford Lake Bike Park IS/MND, Marin County, California

Project manager for CEQA documentation of 17-acre bike park within the greater 139-acre regional park approved in 2011. Key issues addressed minimizing runoff and maintaining water quality of reservoir.

Sonoma Developmental Center, Land Use Feasibility Study for the Upper Watershed, Glen Ellen, California

Prepared land use feasibility study for 350-acre undeveloped property west of the Sonoma Developmental Center campus center; concluded that the property served as the primary watershed for the water needs of the Developmental Center, and therefore should remain undeveloped. LSA's work resulted in the transfer of land to Jack London State Historic Park with dedication in Fall 2002.

Lake County Discovery Center Land Use Feasibility Study Lake County

Project Manager working with a local Driving Committee to select a site for a watershed and cultural interpretive center for school children, regional tribes, visitors, and local residents. A Preferred Alternative offered expansive scenic views with easy access from major roadways and adequate space for needed parking.

ANDREW LEE PULCHEON

PRINCIPAL

LSA



EXPERTISE

Prehistoric and Historical
Archaeology

Cultural Resources
Management

Initial Study/Environmental
Impact Report Preparation

EDUCATION

U.C. Davis Extension, Davis,
California.
Certificate in Land Use and
Environmental Planning 2007

Sonoma State University,
Rohnert Park, California.
Thesis: *Portrait of the
Forgotten Fields: Sonoma
County and its Auxiliary
Airfields of WWII.*
M.A., Cultural Resources
Management, 2000

Humboldt State University,
Arcata, California.
B.A., Anthropology, 1994

CERTIFICATIONS

2002, Registered Professional
Archaeologist #11693.
Register of Professional
Archaeologists, Baltimore,
Maryland.

2003, Registered Professional
Historian #581. California
Council for the Promotion of

PROFESSIONAL RESPONSIBILITIES

Mr. Pulcheon has over 23 years of research, field, project management, and collections management experience. His experience includes project coordination and field direction; public/private sector and Native American consultation; field, archival, and laboratory research on projects throughout central and northern California; Section 106 and CEQA historical resource evaluations; NEPA analysis; CEQA document preparation; development of treatment and management plans; and museum curation and collections management. Mr. Pulcheon has extensive experience with archaeological, environmental, ethnographic, and historical research. He has nine years of experience in cultural resources impact assessment and mitigation development. Mr. Pulcheon prepares cultural resource Initial Study and Environmental Impact Report sections for public and private sector clients in urban and rural settings.

RELEVANT PROJECT EXPERIENCE

Mr. Pulcheon's selected experience with park or trail-related projects includes:

- *Buchanan Street Bicycle/Pedestrian Path Project, Albany, Alameda County*
- *Niles Canyon Trail: Mission Boulevard to Sunol, Alameda County*
- *George Miller Regional Trail Project – Martinez Intermodal to Crockett, Contra Costa County*
- *Richmond Greenway Project, Richmond, Contra Costa County*
- *San Francisco Bay Trail – Lone Tree Point Segment Project, Rodeo, Contra Costa County*
- *San Pablo Open Space Feasibility Study, Point Molate, Contra Costa County*
- *Bayer Neighborhood Park and Community Garden, Sonoma County*
- *Tolay Creek Ranch Sonoma Land Trust Access, Sonoma County*
- *Tolay Lake Regional Park Project, Sonoma County*
- *Alum Rock Park Flood Hazard Reduction Project, Santa Clara County*
- *Martial Cottle Park Master Plan Project, Santa Clara County*

AMY E. FISCHER

PRINCIPAL



EXPERTISE

CEQA/NEPA
Air Quality Analysis
GHG Analysis
Climate Change Analysis
Noise Analysis
Transportation Planning
Health Risk Assessment

EDUCATION

B.S., Environmental
Policy Analysis,
minor in Geography
University of Nevada,
Reno 1998

PROFESSIONAL EXPERIENCE

Principal
LSA Associates, Inc.
July 2005-present

Transportation Planner
VRPA Technologies
2002-2005

Planning Coordinator
Council of Fresno County
Governments
2000-2002

Air Quality Planner
San Joaquin Valley Air
Pollution Control District
1999-2000

PROFESSIONAL RESPONSIBILITIES

With 16 years of experience, Amy Fischer serves as principal air quality, climate change and noise analyst for CEQA/NEPA and planning documents. Ms. Fischer has a comprehensive knowledge of the CEQA requirements for air districts throughout California. Her experience is in assessing plan- and project level air impacts ranging from criteria pollutant analysis to dispersion modeling and health risk assessments using the latest air quality modeling tools. She designs emission reduction strategies to reduce project specific air impacts.

Her noise experience includes ambient noise monitoring and the application of local and State noise standards used in impact analysis and the development noise mitigation for residential and commercial development projects.

PROJECT EXPERIENCE

Ms. Fischer has directed or prepared the CEQA air quality, greenhouse gas emissions, and noise analysis for a diversity of project types, including parks, recreation and open space. Some of these projects are listed below:

- *Bayer Park Master Plan IS/MND* for the City of Santa Rosa, as a subconsultant to RHAA
- *Stafford Lake Bike Park Master Plan IS* for the County of Marin
- *Martial Cottle Park General Plan EIR* for Santa Clara County Park and Recreation Department/CA Department of Parks and Recreation
- *Moorland Park Master Plan IS* for Sonoma County Regional Parks, as a subconsultant to RHAA
- *Davenport Park Expansion Project* for the City of Long Beach
- *Martinez Waterfront Park IS/MND* for the City of Martinez, as a subconsultant to Dillingham Associates
- *Stanford Avenue Staging Area Expansion Project EIR* for East Bay Regional Park District

For the Stanford Avenue Staging Area Expansion Project EIR, Ms. Fischer directed the air quality, noise and GHG technical reports that formed the basis for the EIR sections. Mission Peak Regional Preserve, in the hills above Fremont, is a popular park with the majority of visitors using the Stanford Avenue Staging Area to access the park's trails, particularly those that lead to the peak's 2,516-foot summit. To accommodate the influx of visitors and reduce the occurrence of overflow parking on neighborhood streets in the vicinity of the existing parking lot, the District proposed to construct additional parking. LSA prepared an EIR to consider and evaluate two parking area design options, each of which would provide 300 new parking spaces within the Preserve's boundaries.

SHANNA K. GUILER, AICP

SENIOR PLANNER



EXPERTISE

Parks, Recreation, and Open Space Planning

Site Assessment and Use Feasibility

Environmental Planning and Analysis

Community Assessment/Public Involvement

EDUCATION

University of Virginia,
Charlottesville, Virginia.
M.U.E.P., Urban and
Environmental Planning,
2002

University of California,
Los Angeles, California.
B.A., Physics, 1993

PROFESSIONAL EXPERIENCE

Senior Planner
LSA, Point Richmond, CA
2003 to present

Assistant Project Manager,
LSA, Point Richmond, CA
2002-2003

PROFESSIONAL AFFILIATIONS

American Planning Association (APA)

American Institute of Certified Planners (AICP)

PROFESSIONAL RESPONSIBILITIES

Ms. Guiler is an urban and environmental planner with over 14 years of experience in parks and open space planning, resource management, and environmental analysis. She is skilled in analyzing data, assessing site conditions, and developing sound management goals and guidelines to assist both public and private entities in achieving desired outcomes. Ms. Guiler is experienced in managing multi-disciplinary teams for a range of projects. Her experience also includes impact analysis, environmental documentation for project compliance under both the California Environmental Quality Act (CEQA) and the National Environmental Policy Act (NEPA), and permit processing.

PROJECT EXPERIENCE

Bayer Park IS/MND, Santa Rosa, California. Prepared an IS/MND for development of a neighborhood park in an unincorporated area of Sonoma County. Key issues included park improvements and potential wetlands, reuse of existing structures, and potential traffic associated with future park events.

Hudeman Slough Boat Launch Improvements Project, Sonoma County, California. Prepared an IS/MND for the construction of proposed improvements to an existing boat launch on Hudeman Slough for Sonoma County Parks. The IS/MND addressed potential impacts associated with construction and operation of the proposed boat launch, including impacts to water quality, special status species, wetlands, and cultural resources.

Stafford Lake Bike Park IS/MND, Marin County, California. Prepared an IS/MND for a proposed 17-acre bike park within the existing Stafford Lake County Park in Marin County. Marin County Parks adopted the IS/MND in November 2011.

Homestead Valley Land Management Plan IS/MND, Marin County, California. Prepared an IS/MND for the draft Land Management Plan for the lands within Community Service Area 14, known as Homestead Valley. Assessed potential environmental impacts of management actions including fire fuel reduction, native species preservation, trail and road maintenance and community engagement.

Magical Bridge Playground IS/MND, Palo Alto, California. Prepared an IS/MND for a proposed playground in an existing city park in Palo Alto. Addressed issues such as short-term, construction related noise and air quality impacts; tree removal; special status species issues; and potential cultural resources impacts.

Hiddenbrooke School and Park Initial Study/Mitigated Negative Declaration (IS/MND), Vallejo, California. Prepared an IS/MND for a proposed elementary school and park in Vallejo, California. Addressed potential impacts to natural resources, primarily California red-legged frog, as well as loss of agricultural land and wildlife movement corridors.

Inkwells Bicycle Equestrian Pedestrian Bridge, Marin County. Prepared an IS/ND for a proposed bicycle, pedestrian, and equestrian bridge for the Marin County Open Space District. Addressed potential impacts to natural resources, as well as historic and archaeological sites. Assisted the District in preparing grant applications for funding the proposed bridge.

ROSS A. DOBBERTEEN, PH.D.

PRINCIPAL/WETLAND SCIENTIST

LSA



EXPERTISE

Wetland Permitting and Mitigation Plans
 Biological Impact Assessment
 Water Quality Management
 Endangered Species Assessments

EDUCATION

Tufts University, Medford, Massachusetts.
 Ph.D., Environmental Science and Policy, Dissertation: *Scientific analysis and policy evaluation of wetland replication in Massachusetts*, 1989
 Tufts University, Medford, Massachusetts.
 M.S., Biology, 1986
 University of California, Santa Cruz, California.
 B.A., Biology, Honors Thesis, 1982

PROFESSIONAL AFFILIATIONS

Society of Wetland Scientists
 Society of Ecological Restoration and Management

PROFESSIONAL RESPONSIBILITIES

Dr. Dobberteen manages wetland and endangered species permitting projects. He has over 24 years of permitting experience in the Bay area, and has developed excellent working relationships with key regulatory staff from the Corps, USFWS, RWQCB, CDFW, and BCDC. He has extensive experience in all aspects of wetland regulation including: delineating jurisdictional wetlands and other waters; permit preparation at the local, state, and federal levels; and design and implementation of mitigation plans involving creation, restoration, and enhancement of wetland areas. His project experience also includes Section 7 ESA consultations, assessment and permitting for wetland-associated endangered species, as well as development and implementation of construction monitoring programs for protected species.

PROJECT EXPERIENCE

West-of-Bayshore SFGS Recovery Action Plan (RAP), San Francisco, California

Dr. Dobberteen is Project Manager for providing biological support and as-needed technical services to SFO for implementation of the San Francisco garter snake (SFGS) RAP on the West-of-Bayshore property. LSA formulated a preliminary recovery concept, project design details, and cost analyses for review and approval by SFO and USFWS. Following a two-year review and negotiation process with the agencies, LSA then prepared applications for the necessary federal and State permits. LSA is currently working with SFO on implementation of Phase 2 of the RAP.

SFO Runway Safety Area (RSA) Regulatory Permitting Project, San Francisco, California

From 2009 to 2014, Dr. Dobberteen was LSA's Project Manager to assist SFO with obtaining the necessary federal and State regulatory permits to fill approximately 3.5 acres of wetlands for the FAA-mandated RSA Project. In addition to leading the regulatory permitting tasks for the project, LSA provided technical biological support for the preparation of the project's CEQA and NEPA documentation.

Tesoro Avon Wharf Upgrades Project, Martinez, California

Dr. Dobberteen is currently providing as-needed consulting support to Tesoro for their proposed Avon MOTEMS Compliance Project. LSA has conducted field surveys for California clapper (Ridgway's) rails, as well as prepared a wetland delineation and Biological Assessment. Dr. Dobberteen continues to provide as-needed support for the various permit applications.

Vaca Valley Business Park Biological Services and Wetlands Permitting, Vacaville, California

Since the early 1990s, LSA has served as principal biological consultant to Chevron Real Estate Management Company and subsequent developers to prepare Section 404 permit applications and associated wetland mitigation plan for a 350-acre business park.

ARTHUR BLACK

ASSOCIATE/TRANSPORTATION PLANNER

LSA



EDUCATION

California State Polytechnic Institute, Pomona. Masters of Urban and Regional Planning, 2012.

Grove City College. B.S., Industrial Management, 1999.

PROFESSIONAL EXPERIENCE

Transportation Planner, LSA Associates, Inc., environmental, planning, and traffic engineering consultants, Irvine, California, December 2006–present.

Logistical Support, United States Marine Corps, 4th Light Armored Reconnaissance Battalion, Camp Pendleton, California, 2002–2009.

PUBLICATIONS

“Transportation Plan for the 2010 Winter Olympics in Vancouver, British Columbia,” Institute of Transportation Engineers Southern California Section Newsletter 2009-2010 Issue No. 7, April 2010.

PROFESSIONAL RESPONSIBILITIES

Mr. Black’s primary responsibilities include the production of technical reports for the transportation function of LSA in Irvine, CA. This role includes the preparation of traffic and parking studies, operational analysis, and transportation planning research. Mr. Black’s has also provided peer review for traffic and parking studies.

PROJECT EXPERIENCE

Stafford Lake Park, Novato, CA. Mr. Black analyzed traffic impacts for expansion of the Stafford Lake Park. Trip generation for the project was developed based on the total undeveloped/passive area that would become active park space after the expansion. Additional topics addressed included sight distance at proposed new vehicle entrances. While the total size of the park was not changed, refurbishment of park elements would still be expected to draw additional vehicles to the park. Mr. Black recognized that traffic to the park is constrained by parking capacity and the proposed expansion of parking could facilitate additional traffic.

Moorland Park, Santa Rosa, CA. Mr. Black analyzed traffic impacts for this proposed neighborhood park. Trip generation for the project was developed based on picnic sites. Local travel mode data was then used to estimate the number of vehicle trips generated versus walking and bicycle trips from the nearby residential neighborhood.

Martinez Waterfront Park, Martinez, CA. Mr. Black analyzed traffic impacts for the refurbishment of the Martinez Waterfront Park. While the total size of the park was not changed, refurbishment of park elements would still be expected to draw additional vehicles to the park. Mr. Black recognized that traffic to the park is constrained by parking capacity and the proposed expansion of parking could facilitate additional traffic. Trip generation for the project was developed using this method and the impact of additional trips on nearby intersections was analyzed.

San Francisco Bay Trail, Pinole, CA. Mr. Black prepared a construction traffic impact analysis for the closure of this gap in the San Francisco Bay Trail. Mr. Black considered construction phases and based the trip generation on the number of workers, types of equipment used, and materials delivered during each phase. Passenger car equivalent factors were applied to construction equipment and these final project volumes were applied to the local roadway network to determine the potential for traffic impacts.

CURRICULUM VITAE

BENJAMIN PAPPAS

MILLER PACIFIC
Engineering Group

Novato
504 Redwood Blvd., Suite C
Novato, CA 94947
+1 5382-3444



Registration

Geotechnical Engineer
No. 2786, CA, 2008

Civil Engineer
No. 63940, CA, 2002

Education

MSCE, Civil
Engineering,
UC Berkeley,
Berkeley, CA, 2003

BSCE, Civil
Engineering,
California Polytechnic,
San Luis Obispo, CA,
1999

Memberships

ASCE, American
Society of Civil
Engineers

EERI, Earthquake
Engineering Research
Institute

Experience Summary

Ben Pappas serves as a Senior Engineer on a variety of Geotechnical and Geo-Civil Projects and is a registered Civil and Geotechnical Engineer in the State of California. His experience is concentrated in the North and East Bay area, particularly Marin, Sonoma and Alameda Counties.

Ben has extensive experience working with local School Districts and Colleges to improve their campus facilities. Some of the districts Ben has worked with include Novato Unified, San Rafael City Schools, Healdsburg Unified, Peralta Community College District, and Dominican University. The educational facility projects Ben has been involved with required gearing our geotechnical services to comply with the current Division of State Architects (DSA) requirements.

Ben has been responsible for numerous Geo-Civil projects including slide repairs and retaining wall designs. He managed geotechnical investigations for various school sites in Marin, Sonoma, Napa, Alameda, and Contra Costa Counties. For these projects he provided detailed seismic hazard analysis, including up-to-date liquefaction analysis and calculations for seismically induced settlement. He also analyzed global slope stability, for both static and seismic conditions, utilizing sophisticated slope stability programs.



One of Ben's unique projects was the retrofit of an existing structure at the College of Alameda. The subsurface soils consisted of soft, compressible Bay Mud and loose, liquefiable sands. Due to the sensitive soil profile and the size of the structure Ben performed a site specific seismic response analysis to determine the lateral loads exerted on the structure during a seismic event. Additionally, Ben provided various deep foundation recommendations. Based on his recommendations the design team opted to support the structure on mini-piles and Ben provided additional vertical and lateral capacity analyses.

Ben has provided geotechnical design criteria, construction details, quality control and managed the construction observation and testing of many synthetic turf fields throughout the Bay Area. Some of his synthetic turf projects include Terra Linda High School in San Rafael, San Marin and Novato High Schools, Merrill F. West High School, Hercules High/Middle School and Dominican University of California.

Ben has planned and supervised the subsurface exploration of hillside sites, marshland soil and expansive soil areas. In these projects he has used a variety of exploration techniques in addition to conventional drilling and undisturbed sampling. These include specialized Shelby Tube and Piston sampling. Ben is also experienced with advanced in-situ techniques such as cone penetration testing and Slope Inclinator monitoring.

BSP Resume 2009

M P E G



Miller Pacific Engineering Group

504 Redwood Blvd., Suite 220
Novato, CA 94947
415/382-3444

CURRICULUM VITAE

SCOTT STEPHENS



Registration

Geotechnical Engineer
No. 2398, CA, 1998

Civil Engineer
No. 50482, CA, 1993

Education

MSCE, Geotechnical
Engineering
U.C. Berkeley
Berkeley, CA, 1991

BSCCE, Civil Engineering
U.C. Berkeley
Berkeley, CA, 1988

Memberships

ASCE, American Society
of Civil Engineers

ASFE, Professional
Firms Practicing in the
Geosciences

ACEC of California,
American Council of
Engineering Companies.
(Past Chapter President)

Experience Summary

Scott Stephens is President of Miller Pacific Engineering Group and is responsible for the overall business management of the firm. He is also the Senior Project Manager and Reviewer for numerous Geotechnical and Geo-Civil projects.

He has prepared numerous geotechnical planning reports and environmental impact studies and serves as a *Peer Reviewer* for several local governmental agencies.

He has conducted many forensic geotechnical investigations and has provided expert testimony on geotechnical issues including slope instability, retaining wall failure, foundation distress and groundwater seepage.

His projects frequently combine investigation of distressed property and remediation design. Such projects have ranged from compaction grouting to re-support a multi-story building, reconstruction of a tunnel lining collapse, stabilization of a creek channel with a tied back soldier pile retaining wall, and reconstruction of a landslide using subdrains and a reinforced earth buttress.

One of his unique projects was the evaluation of an ancient compound landslide, the subject of major litigation, and the development of a unique stabilization concept. The investigation and analysis was followed by the complete Geo/Civil design for the remediation. It was comprised of 74 three-foot diameter, deep ductile concrete shear pins and a horizontal drainage system.

His geotechnical projects have required detailed seismicity studies, liquefaction analysis, slope stability studies and settlement analyses.

Scott's Geo-Civil projects have included full engineering design, bid documents, contract management, and construction inspection for a variety of projects: retaining structures, landslide repairs, remedial drainage, pedestrian bridges, restoration of distressed foundations, and synthetic turf athletic fields.

Scott has provided geotechnical design criteria, construction details, quality control and managed construction observation and testing of many synthetic turf fields throughout the Bay Area. Some of his synthetic turf projects include Marin Academy in San Rafael, San Marin and Novato High Schools in Novato, Merrill F. West High School, Hercules High/Middle School and Gilman Field in Berkeley.

His technical expertise includes sophisticated computer analyses, many conventional and unique exploration techniques, advanced testing methods including in-situ testing by field vane shear, monitoring with inclinometers and piezometers, field permeability measurement, nuclear density gauge testing and seismic refraction surveys.



Ray Keane, P.E., Principal

EVERY PROJECT COUNTS

Profession

Mechanical Engineer

Qualifications

LEED Accredited Professional

Engineering Diploma
Dublin Institute of Technology
Dublin, Ireland

BSc, Engineering
Trinity College
Dublin, Ireland

IFFI, French Institute of Industrial
Refrigeration
Post Graduate Studies
Paris, France

PE License, Mechanical
CA M31584
AZ 42652

Professional Associations

Member, U.S. Green Building
Council (USGBC)

Member, Chartered Institute of
Building Service Engineers (CIBSE)

Member, American Society of
Heating, Refrigeration and Air
Conditioning
Engineers (ASHRAE)

Institute of Engineers of Ireland

Ray Keane is a Building Services Engineer specializing in Mechanical Engineering and Sustainable Projects. He has been responsible for project management, design management, systems and energy analysis, engineering and construction administration. His experience covers both consulting and contracting which has endowed him with a practical vision of the design and construction process. Ray is an advocate of integrated buildings and has experience designing all types of facilities, including corporate, commercial, residential and institutional.

Residential / Mixed-Use Experience

- Family House, Multi family/Mixed Used Housing Development, San Francisco, CA (Green Point Rated)
- 1036 Mission Street, Multi family, Mixed Used Housing Development, San Francisco, CA (Green Point Rated)
- 430 Turk Street Affordable Housing Renovation, San Francisco, CA
- 939 Eddy Street Affordable Housing Renovation, San Francisco, CA
- 951 Eddy Street Affordable Housing Renovation, San Francisco, CA
- 666 Ellis Street Affordable Housing Renovation, San Francisco, CA
- 201 Turk Street Mixed-Use Housing Renovation, San Francisco, CA (Green Point Rated)
- O'Farrell Towers Affordable Housing Renovation, San Francisco, CA
- 55 Laguna Mixed-Use Housing Development, San Francisco, CA (Targeted LEED Gold)
- 2090 Delaware Mixed-Use Housing Development, San Mateo, CA
- Fargo Senior Living Center, San Leandro, California (Green Point Rated)
- California Hotel Mixed-Use Affordable Housing Development, Oakland, CA (Green Point Rated)
- Grand Avenue Mixed Use/Condominiums, South San Francisco, CA
- Jefferson Housing Mixed-Use Affordable Housing Development, Oakland, CA
- BDK Live Work Building, Berkeley, CA (Targeted Net Zero Energy)
- The Commons at Mount Burdell Conceptual Master Plan, Novato, CA (Targeted for LEED Platinum and Net Zero Energy)
- Market Street Mixed-Use/Condominium Development, San Francisco, CA (Targeted for LEED Gold)
- Oaks Housing Mixed-Use Affordable Housing Development, Oakland, CA
- Project Pride Family Housing Development, Oakland, CA
- Sierra Meadows Senior Housing Center, Visalia, CA (LEED Gold certified and Green Point Rated) and many more

Civic / Community Experience

- City of Tracy Fire Station #97, Tracy, CA (Targeted for LEED Gold)
- San Jose Fire Station #1, San Jose, CA
- Treasure Island Central Cooling and Heating Peer Review, San Francisco, CA
- San Francisco International Airport Boarding Area A, San Francisco, CA

Peter Balint, P.E.

EVERY PROJECT COUNTS

Profession

Electrical Engineer

Qualifications

BS, Engineering
California Institute of Technology

PE License, Electrical
CA E7933

Professional Associations

IEEE Senior Member; Past Director
SF Bay Area Council

Past Chariman IAS SF Chapter

Peter Balint has over 40 years of experience in the design of electrical systems including power, lighting and signal systems for all types of commercial and institutional construction. Peter has worked in the United States, Japan and the United Kingdom, with projects on three continents. He has an extensive knowledge of a wide variety of electrical systems, from low voltage signals to high voltage distribution. He is especially experienced and knowledgeable in the design of electrical systems for public facilities such as museums, performance venues, educational and health care facilities. A number of his projects have involved maximizing the use of daylighting and other energy efficient schemes.

Residential / Mixed-Use Experience/ Civic / Community Experience

- 1036 Mission Street, Multi family, Mixed Used Housing Development, San Francisco, CA (Green Point Rated)
- 201 Turk Street Mixed-Use Housing Renovation, San Francisco, CA (Green Point Rated)
- O'Farrell Towers Affordable Housing Renovation, San Francisco, CA
- 55 Laguna Condos/Housing Development, San Francisco, CA
- 2090 Delaware Mixed-Use Housing Development, San Mateo, CA
- High Horse Ranch Residence and Guest Cabins, Willits, CA
- Wheeler Residence, St Helena, CA
- California Academy of Sciences, San Francisco, CA
- De Young Museum, San Francisco, CA
- Guggenheim Museum, Abu Dhabi, UAE
- Hunters Point Redevelopment, San Francisco, CA
- San Jose City Hall , San Jose, CA
- Seattle Central Library, Seattle, WA
- Treasure Island Redevelopment Plan, San Francisco, CA

Commercial / Corporate Experience

- Bill and Melinda Gates Foundation Headquarters, Seattle, WA
- CalPERS Headquarters Expansion, Sacramento, CA
- Kaiser Medical Center, Santa Clara, CA
- Laguna Honda Hospital, San Francisco, CA
- Parc1, Seoul, Korea
- Transbay Transit Center, San Francisco, CA

Education Experience

- St. Matt's Hall and Day Care Center, St Matthew's Episcopal School, San Mateo, CA
- Milpitas Unified School District School Renovations, Milpitas, CA
- Presidio Hill School, San Francisco, CA
- Walden School, Berkeley, CA
- De Anza College Kirsch Center for Environmental Studies, Cupertino, CA (LEED Platinum Certified)

Kim Zylker, P.E., Associate



EVERY PROJECT COUNTS

Profession

Mechanical Engineer

Qualifications

LEED Accredited Professional

BSME, Mechanical Engineering

California Polytechnic State University

San Luis Obispo, California

PE License, Mechanical

CA M34910

Professional Associations

Member, U.S. Green Building Council (USGBC)

Member, American Society of

Heating, Refrigeration and Air Conditioning

Engineers (ASHRAE)

Kim Zylker has widespread design and project management experience as a mechanical engineering with a sustainable focus. This includes, but is not limited to, projects in housing, hospitality, commercial, and higher education. Kim looks at every project as an opportunity to collaborate closely with the architectural team and create design solutions that are not only fully integrated but deliver on the promise of increased building performance.

Residential / Mixed-Use Experience

- 201 Turk Street Affordable Housing Renovation San Francisco, CA (Green Point Rated)
- O'Farrell Towers Affordable Housing Renovation, San Francisco, CA
- 430 Turk Street Affordable Housing Renovation, San Francisco, CA
- 939 Eddy Street Affordable Housing Renovation, San Francisco, CA
- 951 Eddy Street Affordable Housing Renovation, San Francisco, CA
- 666 Ellis Street Affordable Housing Renovation, San Francisco, CA
- 1036 Mission Street, Multi family, Mixed Used Housing Development, San Francisco, CA (Green Point Rated)
- 55 Laguna Mixed-Use Housing Development, San Francisco, CA (Targeted LEED Gold)
- Family Housing Sponsored Housing Development, San Francisco, CA
- 2090 Delaware Mixed-Use Housing Development, San Mateo, CA
- Fargo Senior Living Center, San Leandro, California (Green Point Rated)
- 72 Townsend Mixed Use/Condos, San Francisco, CA
- California Hotel Mixed-Use Affordable Housing Development, Oakland, CA (Green Point Rated)
- Grand Avenue Mixed Use/Condominiums, South San Francisco, CA
- Jefferson Housing Affordable Housing Development, Oakland, CA
- Oaks Housing Affordable Housing Development, Oakland, CA
- Mission Street Family Housing, San Francisco, CA (Targeted for LEED Silver)
- Sierra Meadows Senior Housing Center, Visalia, CA
- Tananbaum Residence, San Francisco, CA
- BDK Live Work Building, Berkeley, CA (Targeted Net Zero Energy)
- The Commons at Mount Burdell Conceptual Master Plan, Novato, CA (Targeted for LEED Platinum and Net Zero Energy)
- Project Pride Family Housing Development, Oakland, CA
- Civic Housing Development, Oakland, CA
- Union City Housing Development, Union City

Civic / Community Experience

- Boy's and Girl's Club of San Francisco, Mission Clubhouse, San Francisco, CA
- EcoCenter Historic Renovation, Palo Alto, CA (Designed to Obtain LEED Certification)
- Golden Gate Park Stables, San Francisco, CA
- Presidio of San Francisco Archaeology Center, San Francisco, CA (Goal LEED Silver)



CROMB ASSOCIATES

CONSTRUCTION COST CONTROL AND MANAGEMENT

51 Bay Vista Drive ■ Mill Valley, CA 94941

KEY PERSONNEL
(Estimating Department)
TEAM MANAGER

Name and title:

David Cromb, Principal

Education:

BSc Q.S. / 1978 / Quantity Surveying, R.I.C.S.

Project experience:

David has exercised complete cost control of various building projects from inception to completion in both the United Kingdom and United States. He has worked for general contractors, government agencies, and private construction consultants. Exercised cost control on the following building types: institutional, commercial, residential, and industrial, in addition to rehabilitation/stabilization of existing facilities. He is experience in the management and control of all members in the construction and design team.

CHIEF MECHANICAL / UTILITY SYSTEMS.

Name and title:

Arnold Levine, Chief Mechanical Systems Manager.

Education:

BSME / 1971 / Mechanical Engineering.

Project Experience:

Has carried out numerous estimates from conceptual through final for - Navy, Air Force, Army, NASA, GSA, Corps. of Engineers, Livermore and Berkeley Labs. state local and port authorities, and diverse commercial and industrial companies. Has 34 years' experience with mechanical systems including design, construction and cost estimating. Has value engineering, cost reduction, energy conservation, trouble shooting studies, contractor negotiations, and expert witness in court cases.

CHIEF ELECTRICAL SYSTEMS.

Name and title:

Ronald Stehle, Chief Electrical Systems Manager.

Education:

Electrical Engineering, Cogswell Polytechnical, Mechanical Engineering, UC Berkeley. Architectural Design and Construction, Astro-Physics, UC Berkeley.

Project Experience: Mr. Stehle has 40 years of experience having started his construction career as a General Construction and Electrical Contractor in San Francisco. His firm was actively engaged in numerous large scale commercial and industrial projects for 15 years. Subsequently Mr. Stehle has worked as a construction cost consultant specializing in electrical estimating and change order review.

T (415) 388-1994 ■ F (415) 388-1996 ■ crombassoc@comcast.net ■ www.cromb-associates.com

MICHAEL HEACOCK ARCHITECTS, INC.

High Performance Architecture + Planning

FIRM PROFILE

Michael Heacock Architects excels in high-performance, creative design and an integrated team approach. We believe in collaboration with the owner, builder and design team throughout the design and construction process. We provide design and consulting services for high-performance homes, schools, commercial, mixed-use, public, recreational and institutional projects.

Design services include all phases of design and construction administration. We provide an array of additional services to compliment the architecture. Site Planning, Interior Design and Lighting Design are provided to ensure that the design intent of the architecture is fully realized. Ecological design is embedded in every project we build. Essential green building strategies, such as solar orientation, energy and water efficiency, reclaimed and non-toxic materials are natural integrations in each project. We guide the owner and project team through design decisions with a holistic, integrated approach including feasibility and payback considerations. Renewable energy integration, water harvesting, indoor air quality and green materials are coupled with real world building experience and creative design solutions. We consult with building owners and project teams to produce energy efficient, low carbon buildings and campuses. We collaborate with energy consultants and mechanical engineers to achieve Zero Energy buildings.

Additional Services include entitlements consulting, Living Building Challenge coordination, LEED administration, Net-Zero energy, and on-site heat & power systems. We advise owners and project teams throughout design and construction, easing the documentation process. We offer a broad range of ecological consulting services, working on large scale commercial and institutional projects as well as modest public and school buildings. We also provide LEED Green Rater services on high-performance residential projects. Frequently our projects begin with a preliminary design review, followed by a design charrette with the entire project team. From schematic design through the completion of construction, we provide the services required for high-performance green building projects.

Michael Heacock has participated in the planning, design, management and construction of projects ranging in scope from multi-million dollar mixed-use green commercial developments to 1,000 square foot pre-fabricated mountain retreats. With diverse experience and a 20 year focus on ecological design, we work with project teams to design and build high-performance projects. Notable projects include the O'Hanlon Center for the Arts, Mill Valley Lumber Yard, Marin Montessori School, 5 LEED Platinum net-zero faculty residences at Cate School, and a LEED Childcare Center at Cate School. We have collaborated on large scale institutional projects including 3 LEED Pool Facilities, such as Cal Aquatics at U.C. Berkeley and the East Oakland Sports Center. Prior to the existence of LEED, we worked on numerous green building projects at Berea College, including the 28 unit Ecovillage, a K-3 Child Development Center, and a Living Machine which processes all black water at the Ecovillage for reuse.

We opened our firm in 2003 with two green residential projects in Northern California. The award winning Keohane Residence is featured on the cover of two books, Good Green Kitchens by Jennifer Roberts and Green Homes for the 21st Century by Ashley Rooney. A weekend retreat for a young San Francisco couple, the Pioneer Cabin, is also featured on the cover Green Homes for the 21st Century. The LEED Platinum certified Faculty Residences at Cate School were featured in the August 2008 issue of Environmental Design + Construction.

Inspired, timeless, living buildings that delight the senses and grace the landscape.



MichaelHeacock.com

ZFA STRUCTURAL ENGINEERS

▶ resume

Kevin G. Zucco, SE, LEED AP
Executive Principal

Over the course of his 21 year career in the industry, Kevin has performed structural design and analysis of many public, commercial, and educational facilities throughout California. He applies his experience and enthusiasm for the industry to designing buildable and reliable structures with practical construction documents that meet all architectural design features. With ZFA, having current and past contracts as a Department of State Architect (DSA) and an Office of Statewide Health Planning and Development (OSHPD) Structural Plan Check Consultant, he understands the rigorous performance and safety standards required.

Kevin is adept in the use of the California Building Code's Existing Structures chapter, the International Existing Building Code, California **Historic** Building Code, ASCE41. He has evaluated and retrofit many existing buildings for continued occupancy and reuse in both Life Safety and Immediate Occupancy categories. Kevin developed ZFA's program to use ASCE41 as a tool for building evaluations. The standards have been applied across multiple jurisdictions to determine effectiveness of original construction, to identify any structural deficiencies, to provide recommendations for retrofit and to develop cost estimates for remodel and retrofit construction. Through his affiliation with the Structural Engineer's Association of Northern California (SEAONC), Kevin is a member of the association's Sustainable Design committee.

**Education**

B.S., Civil Engineering, 1992,
California Polytechnic State
University, San Luis Obispo

Professional Registration

CA Structural Engineer SE 4861
United States Green Building Council
LEED AP
State of California Department of
Emergency Services Disaster Services
Worker Safety Assessment Program
ID #10826

Professional Memberships

Community College Facility Coalition
State of California Department of
Emergency Services Emergency
Response
Structural Engineer's Association of
Northern California
City of Santa Rosa Design Review
Board

Select Projects

Bayer Park and Gardens
Windsor High School Athletic Facilities
Wackford Community and Aquatic Complex
Finley Park Community Center and Aquatic Center
Brentwood Community Center
Sports City - The Epicenter
Villa Sport Recreation Center Expansion
Healdsburg High School Modernization and New Construction
Napa County Health and Human Services Master Plan
Napa County Health and Human Services, South Campus
Sonoma County Seismic Hazard Mitigation Studies
Gravenstein Unified School District Seismic Evaluations and Master Plan
Yuba Community College, Clear Lake Campus - New Construction
College of Marin - New Academic Center
Roseland Creek Elementary School Campus - New Construction
Aurora Behavioral Healthcare Hospital
Sonoma County Family Justice Center
Petaluma Fire Station No. 2 and No. 3

Santa Rosa, CA
Windsor, CA
Elk Grove, CA
Santa Rosa, CA
Brentwood, CA
Santa Rosa, CA
Colorado Springs, CA
Healdsburg, CA
Napa, CA
Napa, CA
Santa Rosa, CA
Sebastopol, CA
Clear Lake, CA
Kentfield, CA
Santa Rosa, CA
Santa Rosa, CA
Santa Rosa, CA
Petaluma, CA

1212 Fourth Street | Santa Rosa CA 95404 | 707.526.0992 | KevinZ@zfa.com

