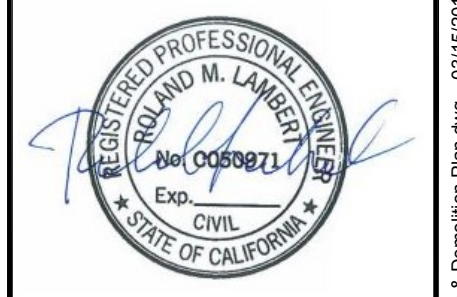


Rev	Date	Description	Designed	Drawn	Checked
-	3/15/18	ISSUED FOR BID			

**MLK ADA & TENNIS COURT IMPROVEMENTS
EXISTING CONDITIONS
& DEMOLITION PLAN
CITY OF SAUSALITO**

City Of
Sausalito
County Of
Marin
State Of
California

Prepared Under the Direction of:



Sheet
C2.0

Scale: 1" = 10'
Date: 03/15/18
Project Number: 4.1162.02
Plan File: D-5471-02

P:\0414\16202\DWG\Sheet_Drawing\C2.0-Existing Conditions & Demolition Plan.dwg 03/15/2018 - 09:56 AM gmbc 11

Rev	Date	Description	Designed	Drawn	Checked
-	3/15/18	ISSUED FOR BID			

MLK ADA & TENNIS COURT IMPROVEMENTS
PAVING PLAN
CITY OF SAUSALITO

City Of Sausalito
 County Of Marin
 State Of California

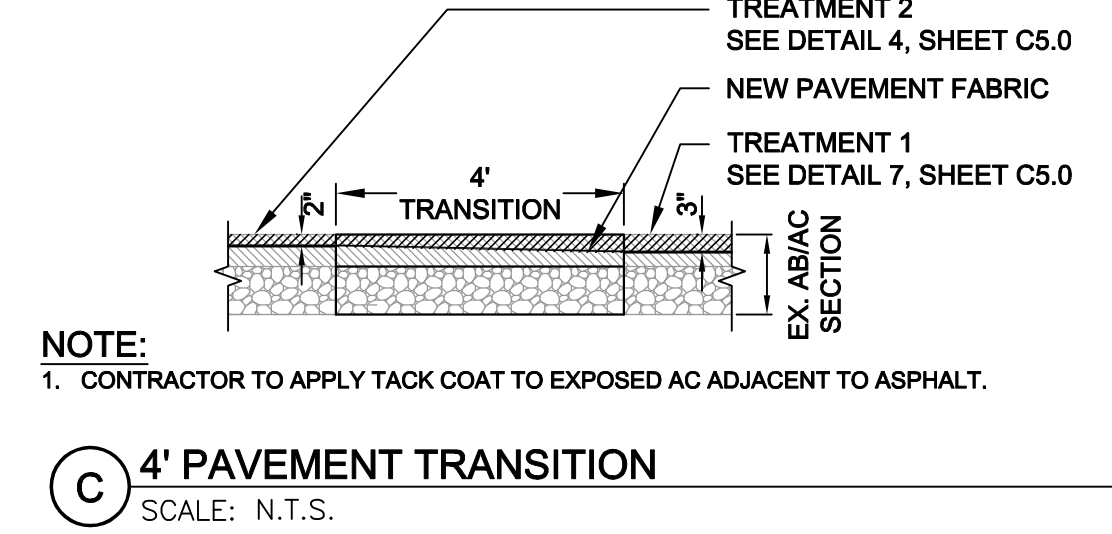
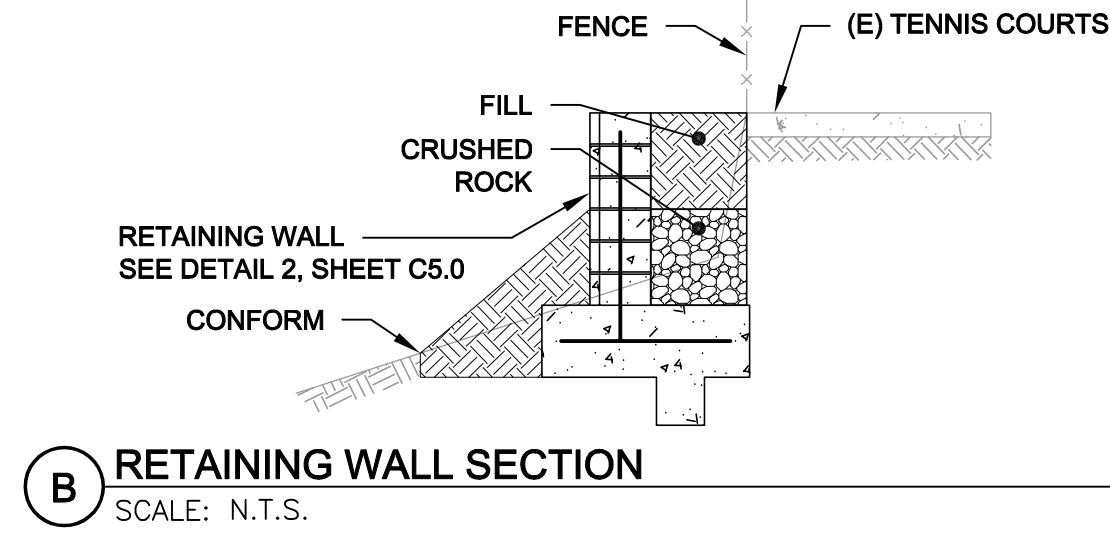
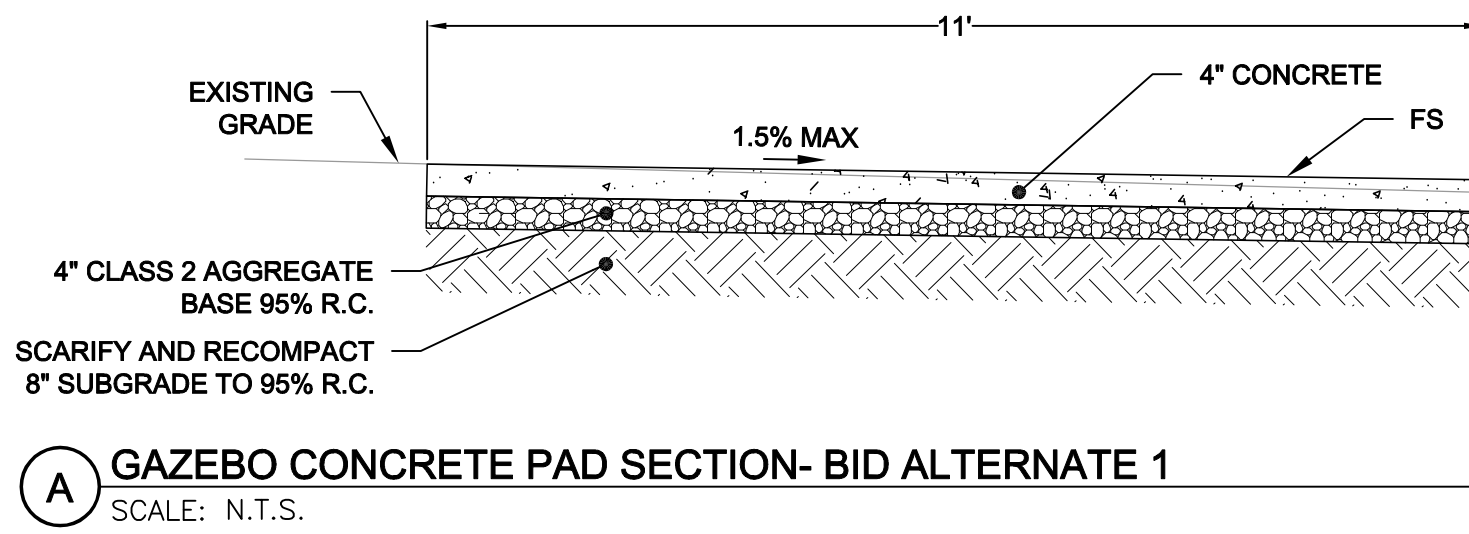
Prepared Under the Direction of:



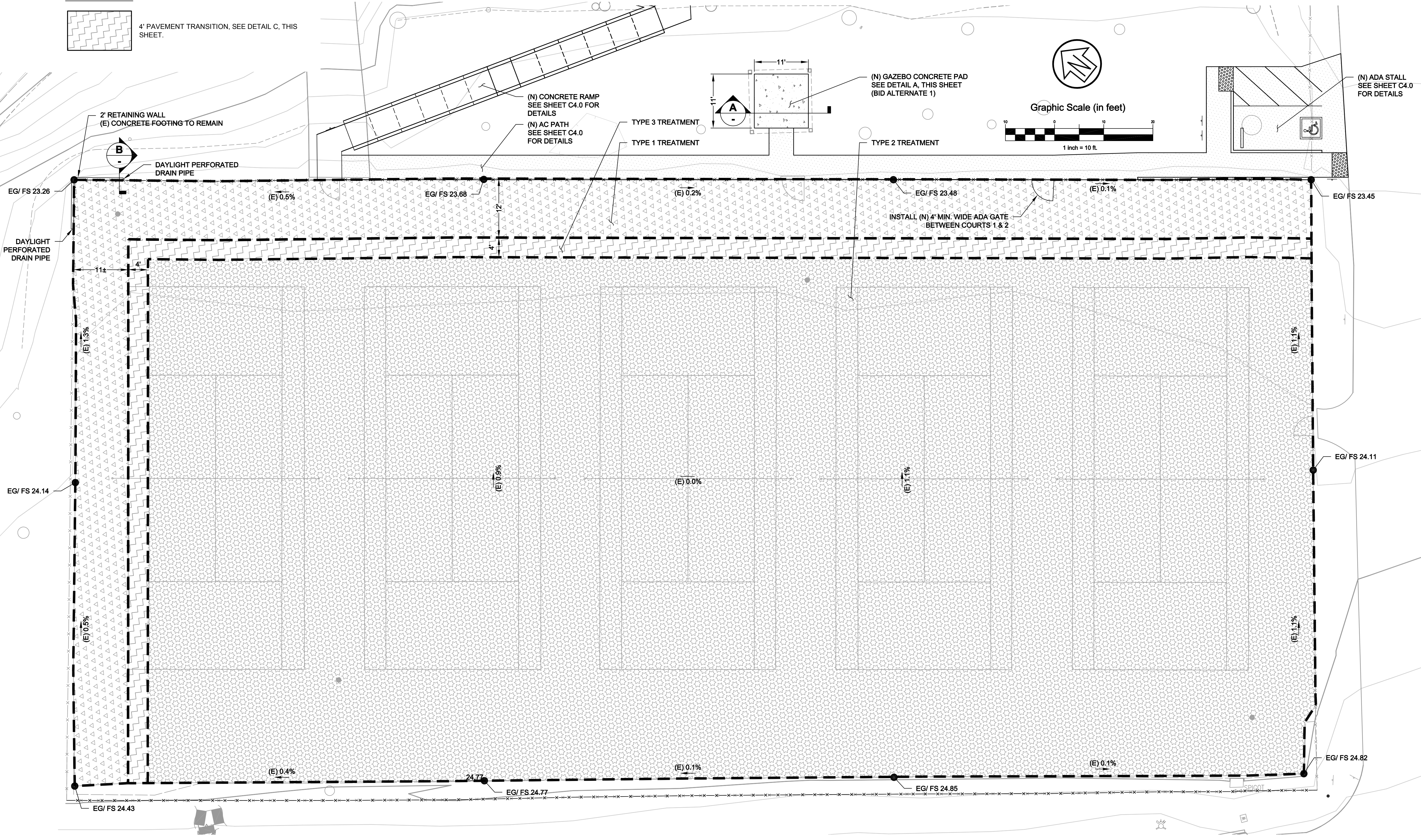
Sheet	C3.0
Scale:	1" = 10'
Date:	03/15/18
Project Number:	4.1162.02
Plan File:	D-5471-03

LEGEND

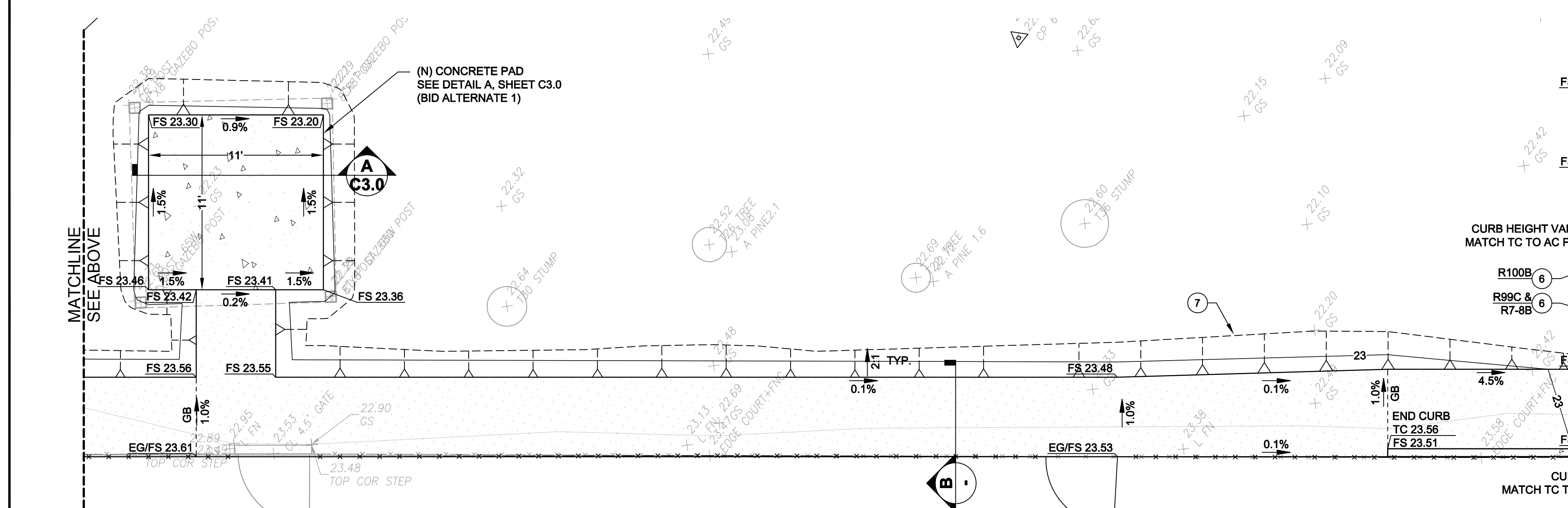
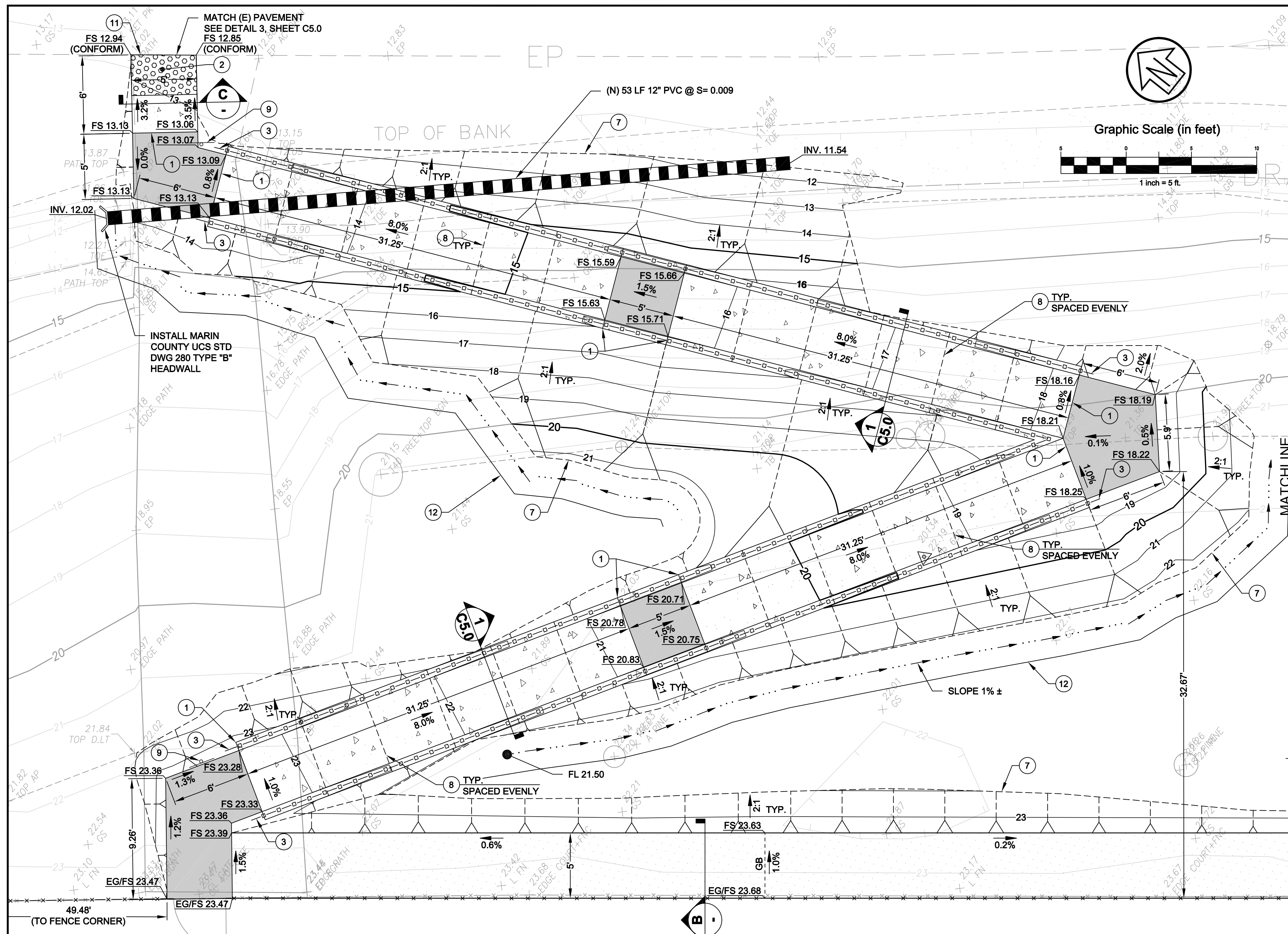
- TREATMENT TYPE 1**
- TREATMENT TYPE 2**
- TREATMENT TYPE 3**



NOTE:
 1. CONTRACTOR TO APPLY TACK COAT TO EXPOSED AC ADJACENT TO ASPHALT.



P:\0414116202\DWG\Sheet_Drawing\C3.0-Paving Plan.dwg 03/15/2018 - 09:56 AM gmane.11

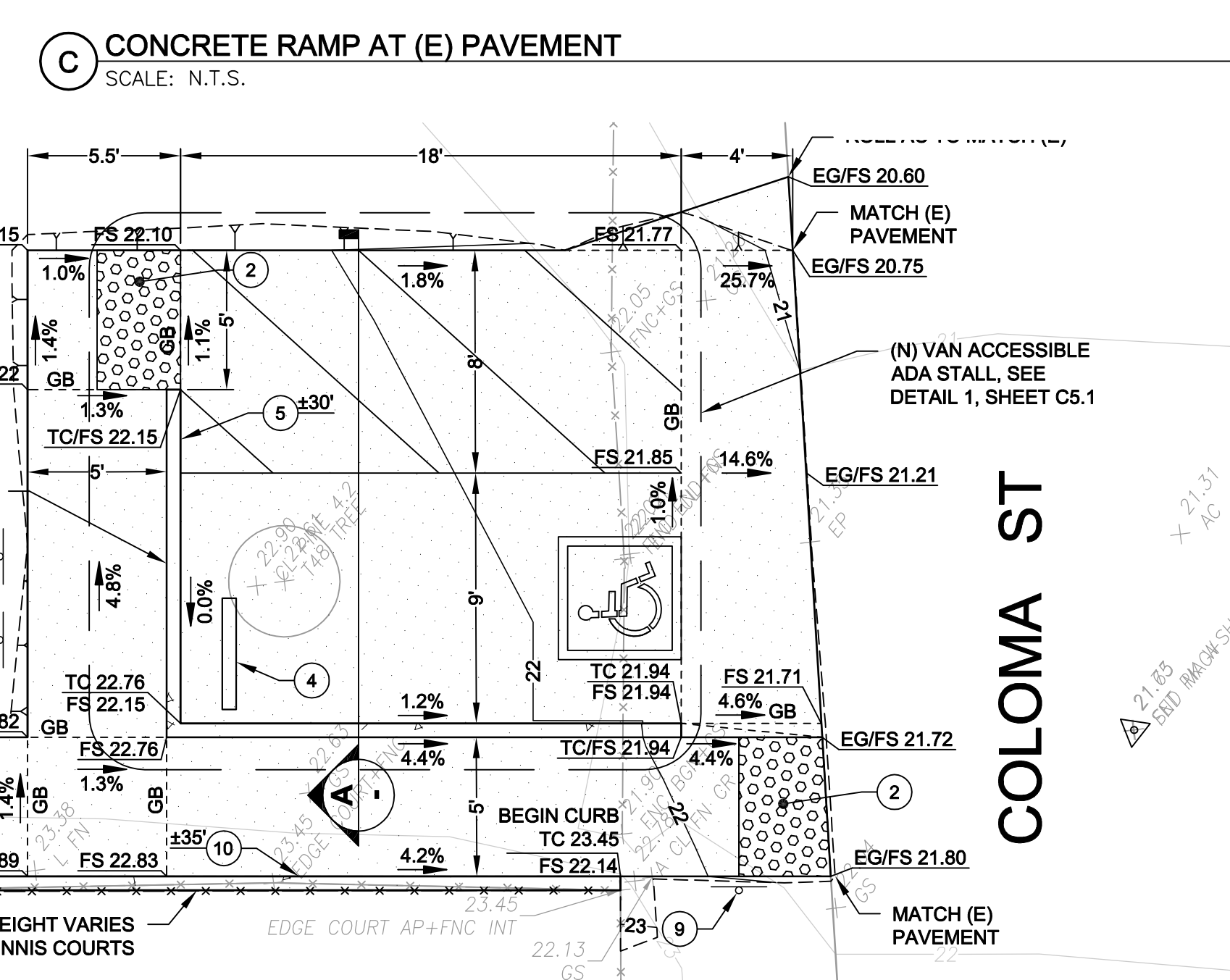
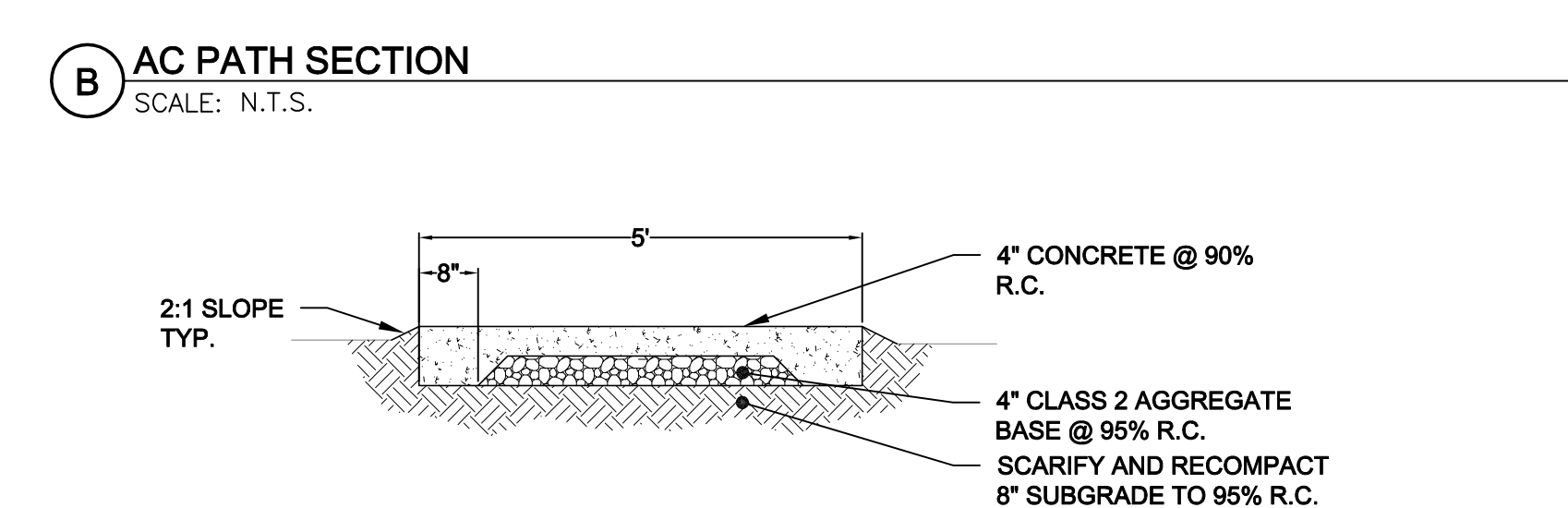
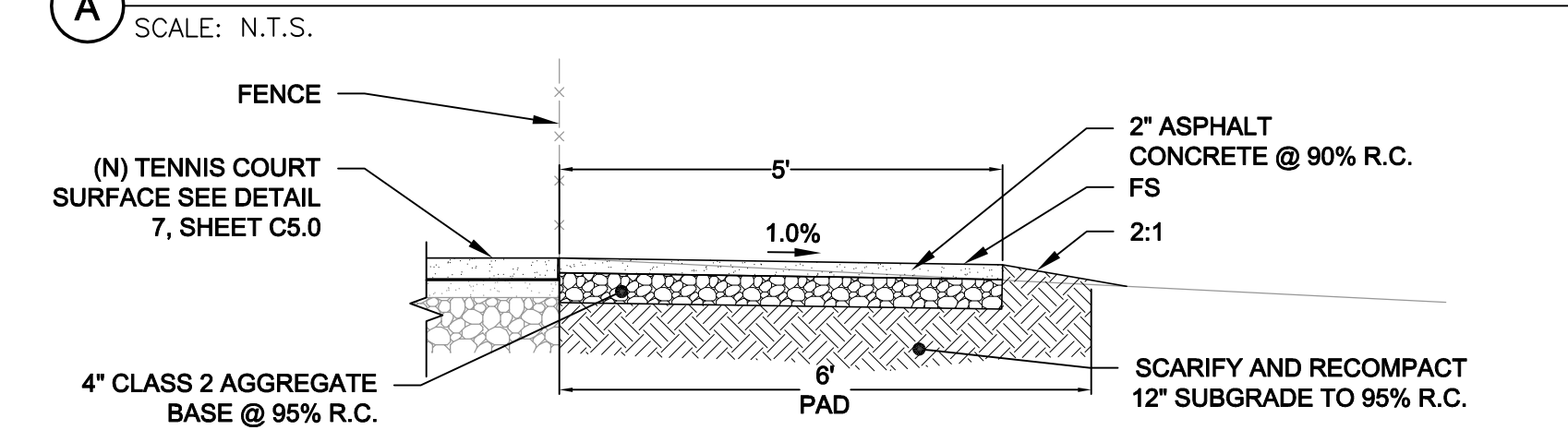
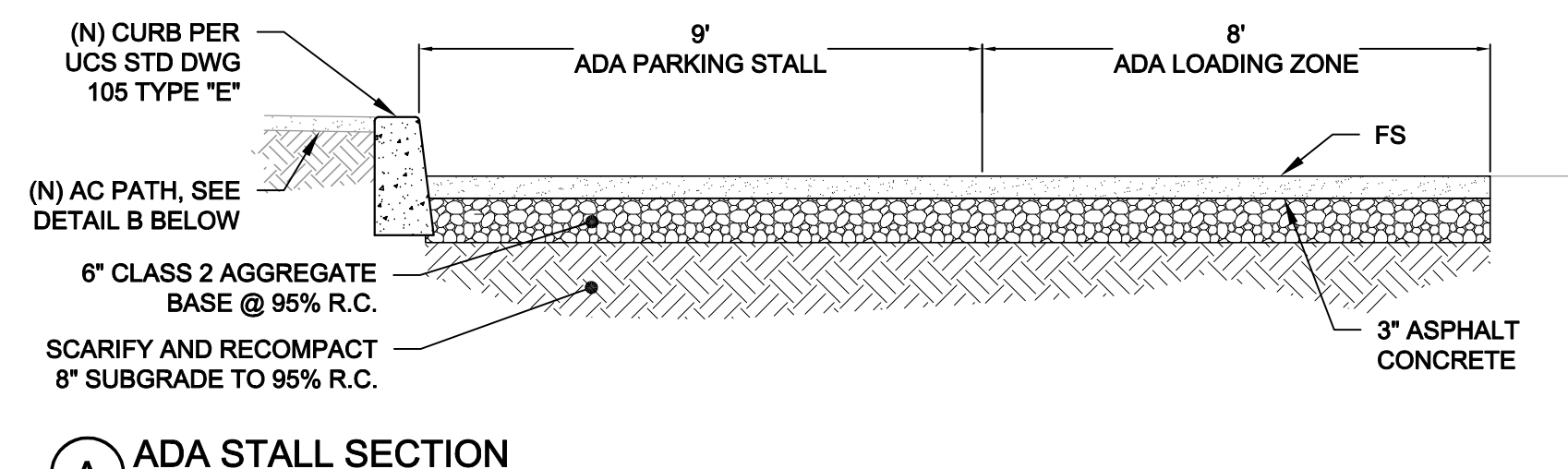
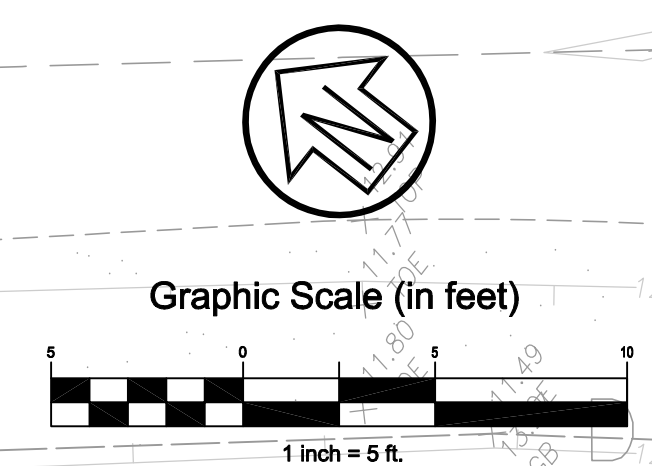


KEYNOTES

- 1 EXPANSION JOINT, SEE DETAIL 10, SHEET C5.0
- 2 TRUNCATED DOMES, SEE DETAIL 9, SHEET C5.0
- 3 PROVIDE 12" EXTENSION AT CONCRETE LANDING, SEE DETAIL 8, SHEET C5.0
- 4 WHEEL STOP, SEE DETAIL 2, SHEET C5.1
- 5 CONCRETE CURB, TYPE "E" PER UCS STD DWG 105, HEIGHT VARIES, SEE PLAN FOR LENGTH AND HEIGHT
- 6 ADA SIGNAGE (R100B, R99C & R7-8B), SEE DETAIL 1, SHEET C5.1
- 7 GRADING DAYLIGHT LINE
- 8 CONTROL JOINT, SPACED EVENLY, SEE DETAIL 11 SHEET C5.0
- 9 DIRECTIONAL ADA SIGNS, SEE DETAIL 6, SHEET C5.0
- 10 15" MAX VERTICAL CURB PER DETAIL 3, SHEET C5.1, HEIGHT VARIES, SEE PLAN FOR LENGTH AND HEIGHT
- 11 EXPANSION JOINT, SEE DETAIL 3, SHEET C5.0
- 12 GRASS LINED SWALE, SEE DETAIL 4, SHEET C5.1

LEGEND

- CONCRETE LANDING, SEE PLAN FOR DIMENSIONS, SLOPES NOT TO EXCEED 2% IN ANY DIRECTION
- CONCRETE WALKWAY AND RAMP
- ASPHALT PAVEMENT PATH
- TRUNCATED DOMES



CSW ST 2
CSW/Stuber-Stroeh Engineering Group, Inc.
 45 Leveroni Court, Novato, CA 94949
 Tel: 415.883.9850 Fax: 415.883.9835
 Civil & Structural Engineers
 Surveying & Mapping
 Environmental Planning
 Land Planning
 Construction Management

Rev	Date	Description	Checked	Drawn	Designed

MLK ADA & TENNIS COURT IMPROVEMENTS
GRADING PLAN
CITY OF SAUSALITO

City Of Sausalito
 County Of Marin
 State Of California
 Prepared Under the Direction of:

 Sheet **C4.0**
 Scale: 1" = 5'
 Date: 03/15/18
 Project Number: 4.1162.02
 Plan File: D-5471-04

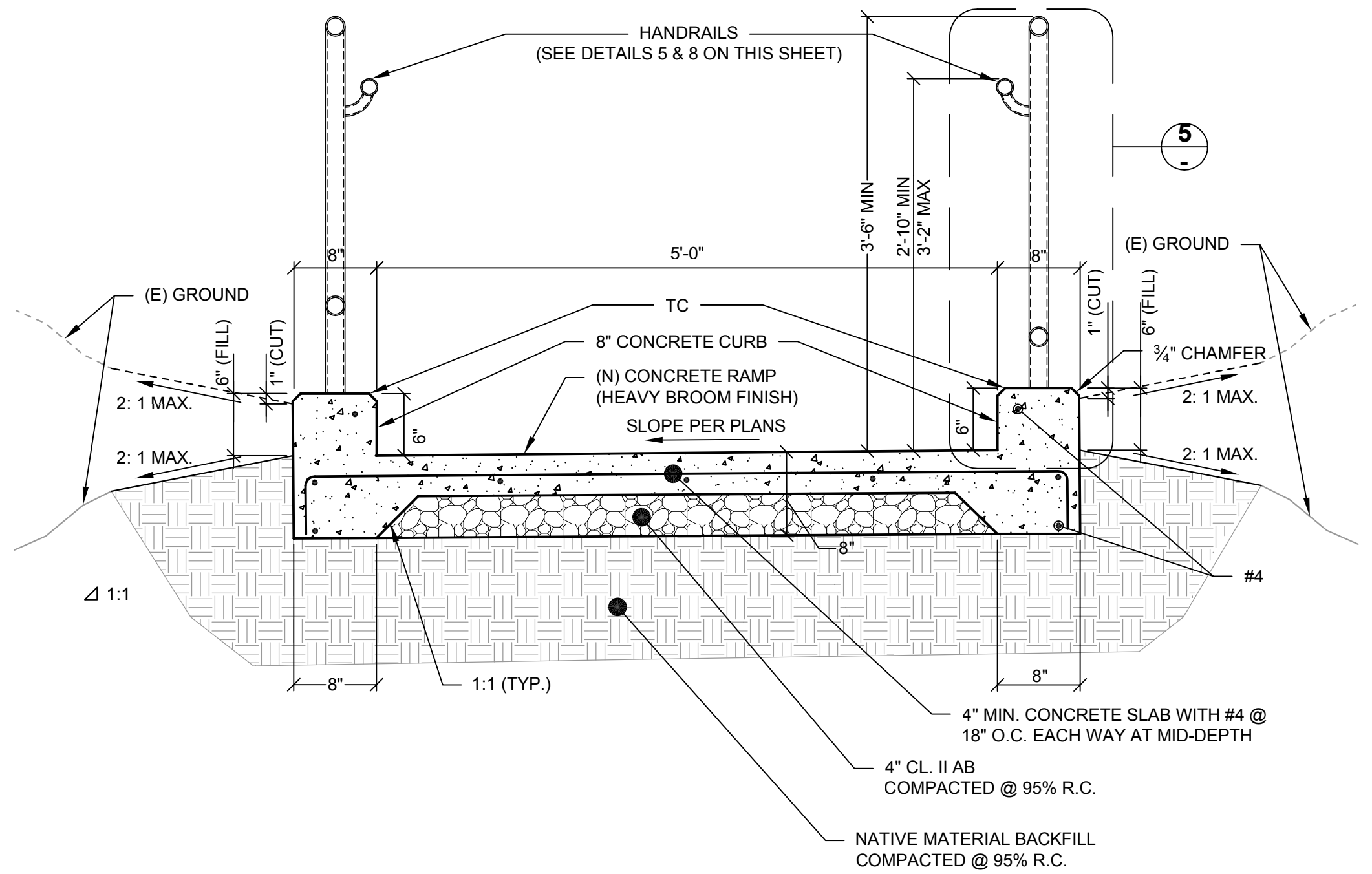
Table with 7 columns: Description, Date, Rev, and 4 blank columns. Includes 'ISSUED FOR BID' stamp.

MLK ADA & TENNIS COURT IMPROVEMENTS DETAILS CITY OF SAUSALITO

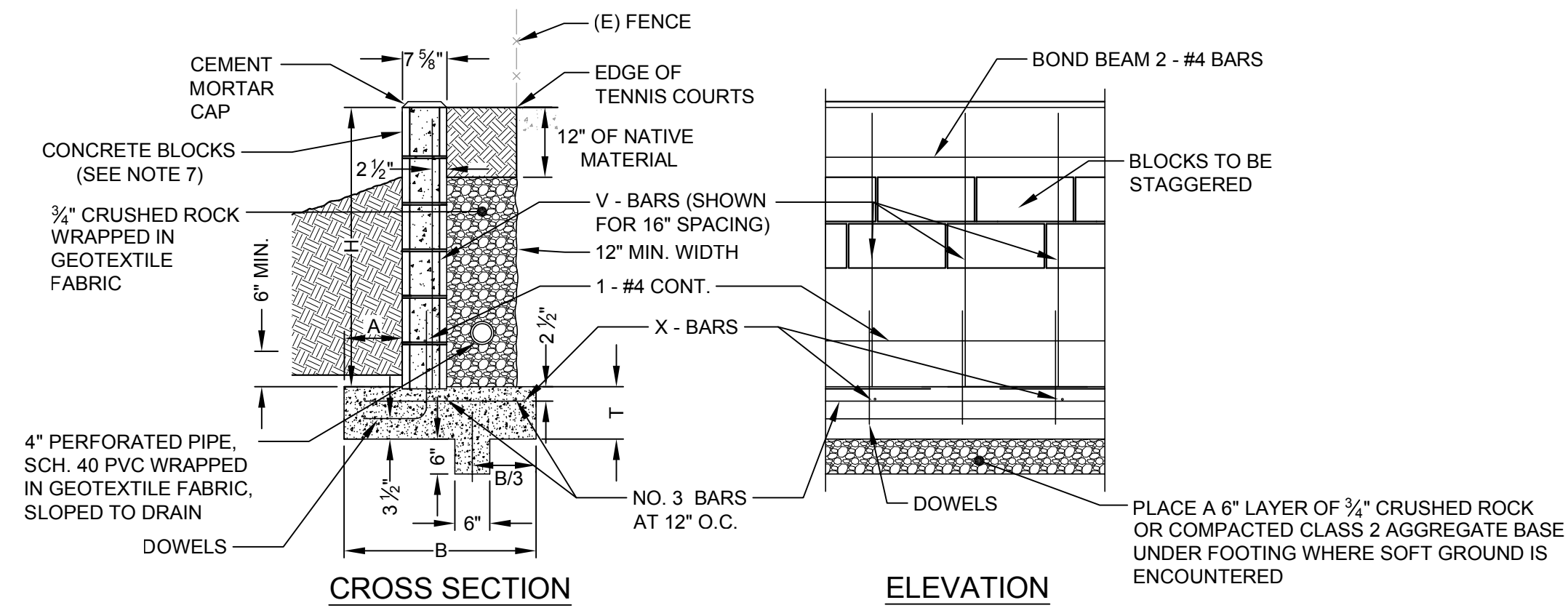
City Of Sausalito County Of Marin State Of California

Prepared Under the Direction of [Professional Engineer Seal]

Sheet C5.0 Scale: N/A Date: 03/15/18 Project Number: 4.1162.02 Plan File: D-5471-05



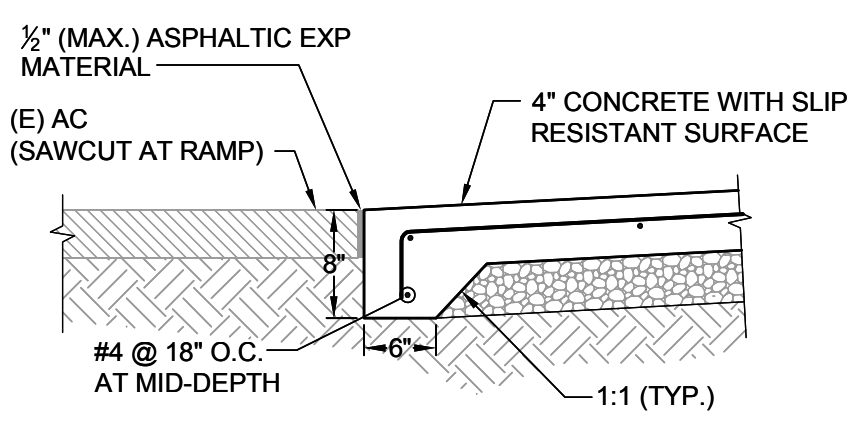
1 RAMP SECTION SCALE: 1" = 1'



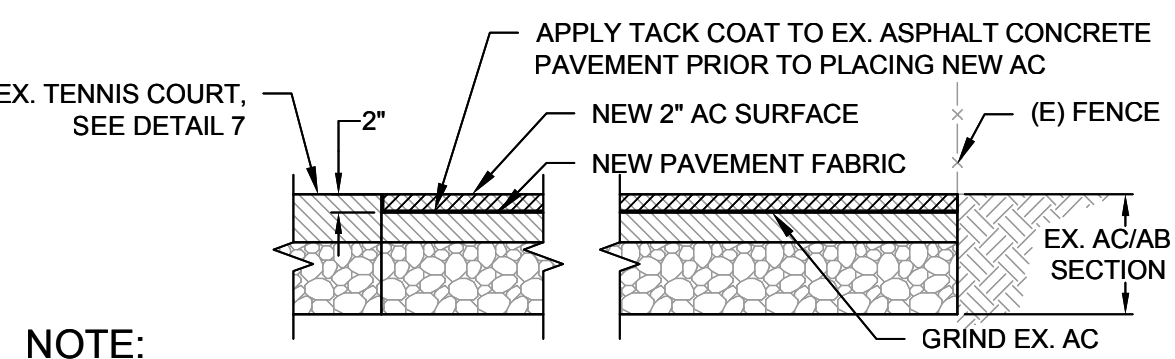
- NOTES: 1. CONCRETE FOR FOOTING TO BE CLASS "A" (6 SACK 3000 PSI) WITH 3/4" AGGREGATE AND 4 INCH MAX. SLUMP. 2. FILL ALL CELLS WITH 7 SACK CONCRETE WITH 3/8" AGGREGATE OR 3:1 MORTAR. 3. DOWELS SHALL BE SAME SIZE AND SPACING AS V-BARS. THEY SHALL PROJECT 40 BAR DIAMETERS, 24 INCH MIN. INTO THE CELLS AND EXTEND TO THE TOE OF FOOTING. LAPPING BARS SHALL BE TIED. 4. WALLS SHALL NOT BE BACKFILLED UNTIL 7 DAYS AFTER CELLS ARE FILLED. 5. WALLS OVER 100' LONG SHALL HAVE VERTICAL EXPANSION JOINTS. WALLS OVER 50' LONG SHALL HAVE VERTICAL CONTRACTION JOINTS. SEE AGENCY ENGINEER FOR DETAILS. 6. NO CONCRETE SHALL BE PLACED UNTIL FORMS AND STEEL HAVE BEEN INSPECTED AND APPROVED BY THE AGENCY ENGINEER. 7. BLOCKS SHALL BE GRADE N OR BETTER (fc=1500 PSI). 8. NO FRONT FACE WEEP HOLES ALLOWED IF SIDEWALK OR PAVEMENT SLOPES AWAY FROM WALL. 9. SUBJECT TO THE APPROVAL OF AGENCY ENGINEER, DESIGN FOR DRAINAGE CONVEYANCE BEHIND WALL MAY BE MODIFIED TO UTILIZE PREFABRICATED DRAINAGE DEVICES.

Table with columns: H, A, B, T, V-BARS, X-BARS. Values: H 2'-0", A 0'-6", B 2'-2", T 0'-9", V-BARS NO. 3 AT 32", X-BARS NO. 3 AT 24"

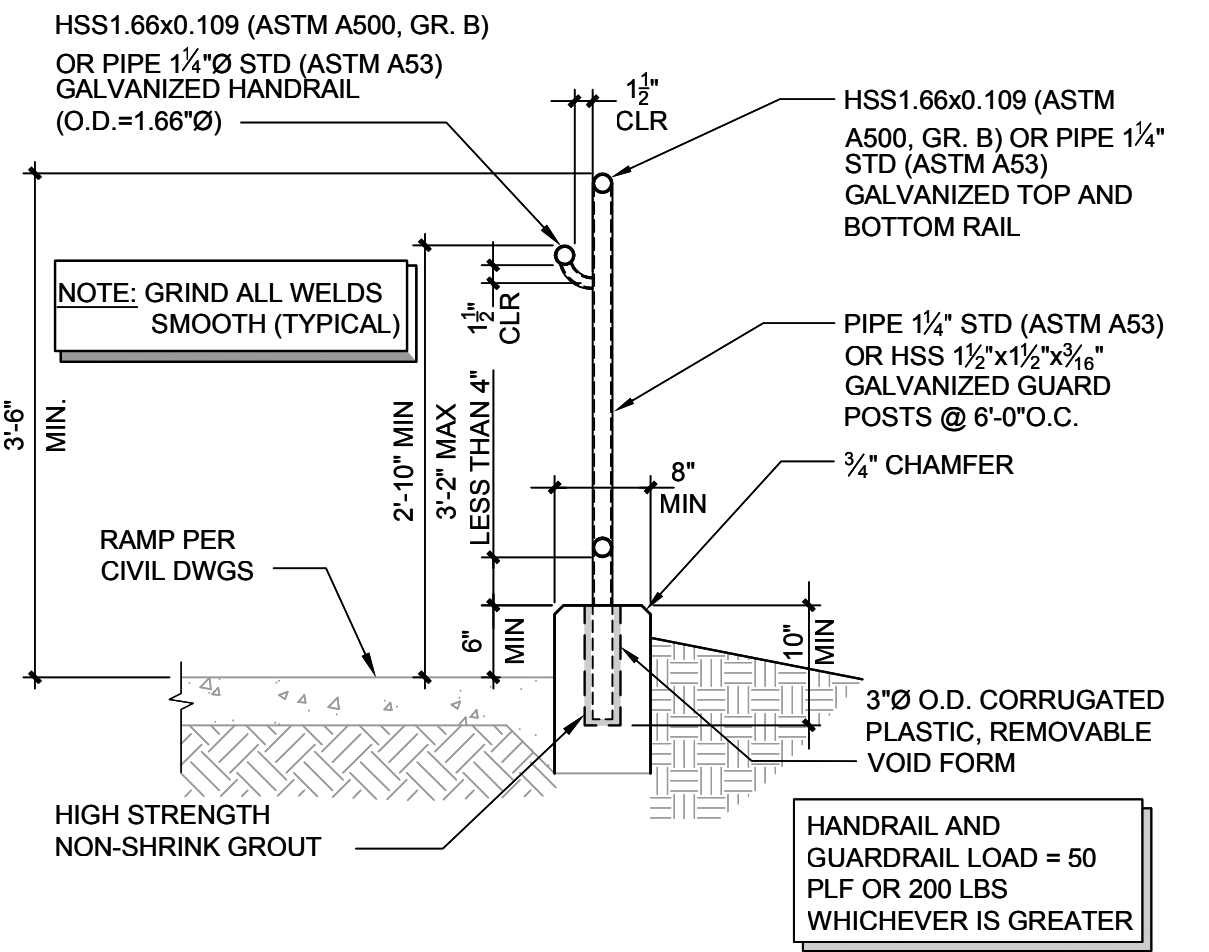
2 RETAINING WALL TYPE "B" SLOPING BACKFILL SCALE: 1" = 2'



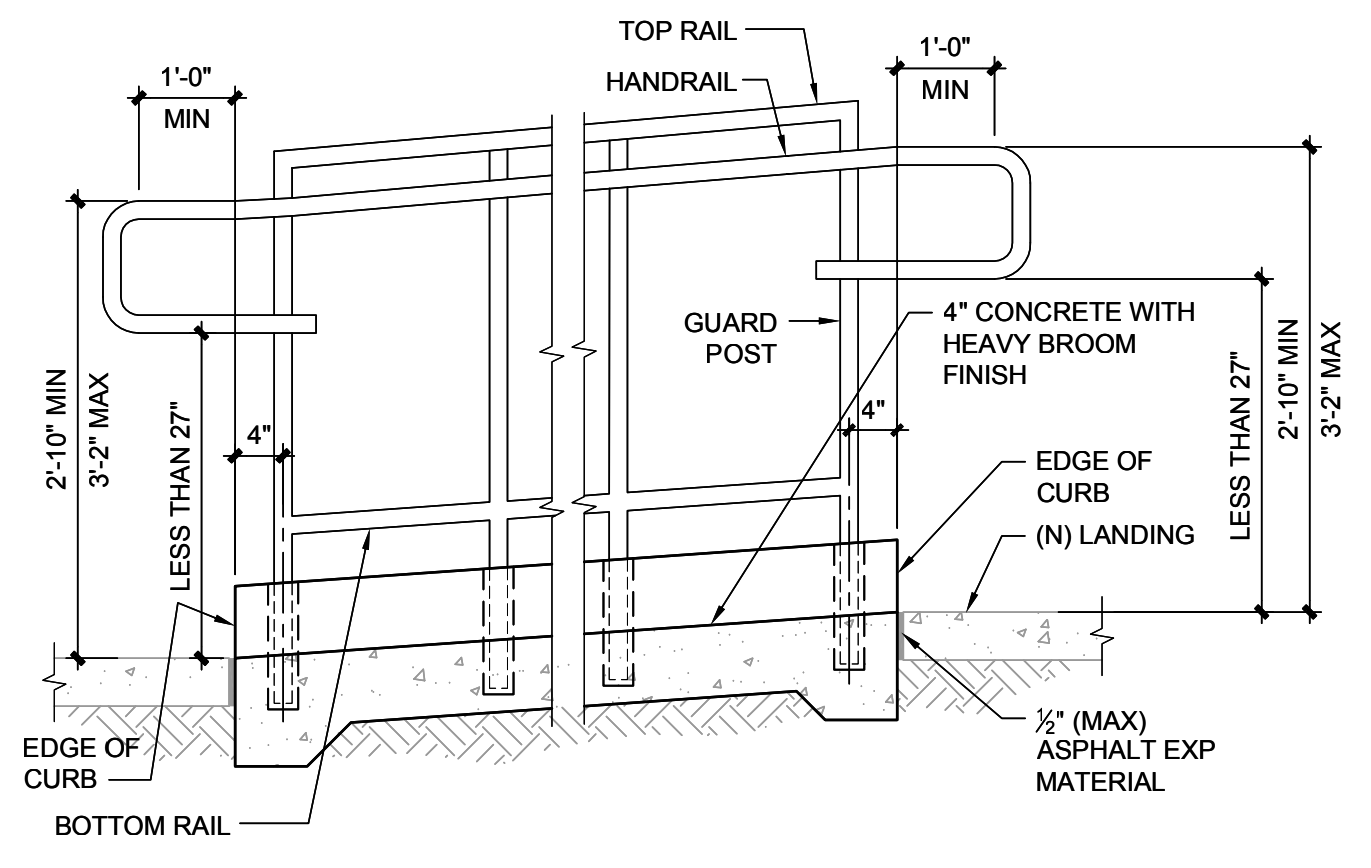
3 WALKWAY SLAB AT (E) PAVEMENT SCALE: 3/4" = 1'-0"



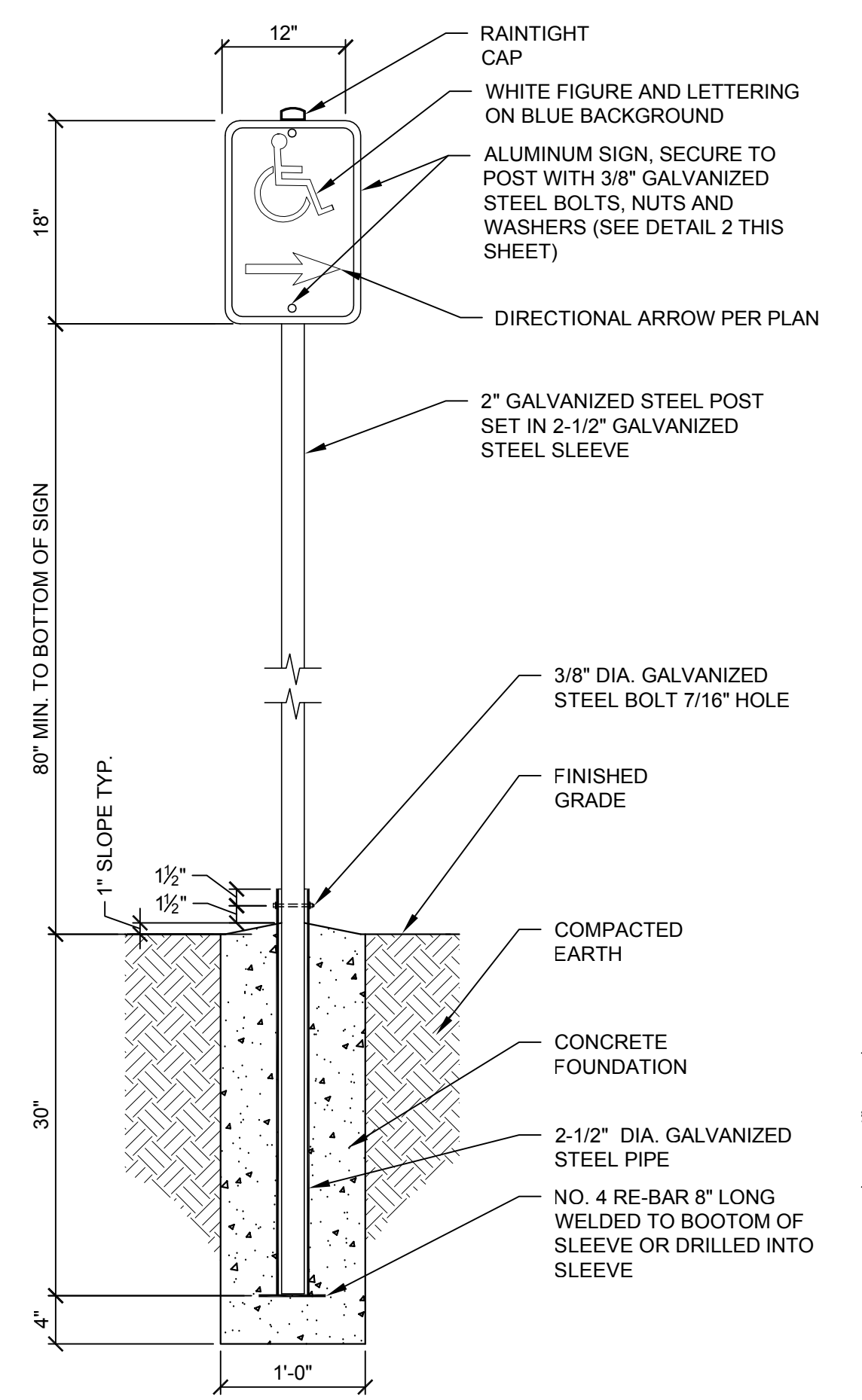
4 A.C. GRIND & OVERLAY SCALE: 3/4" = 1'-0"



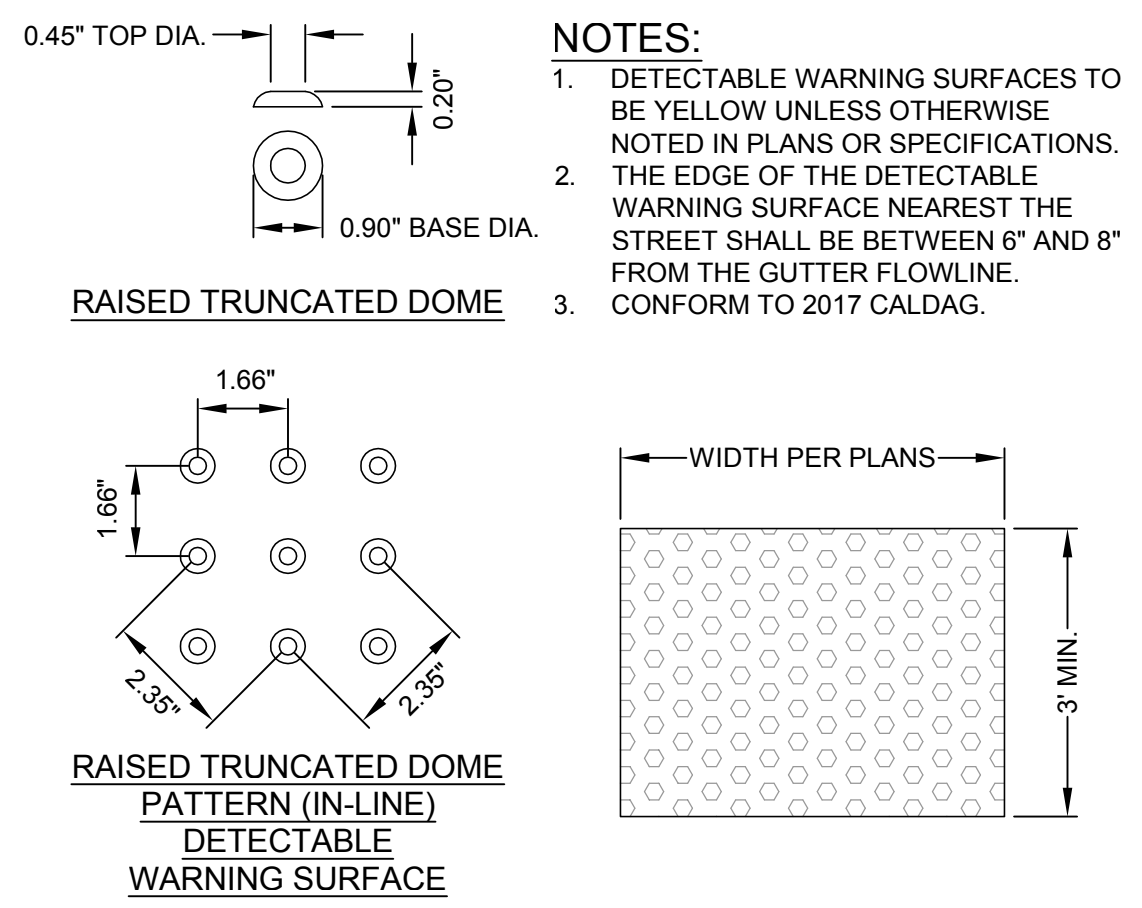
5 RAMP / STEP HANDRAIL SECTION SCALE: 3/4" = 1'-0"



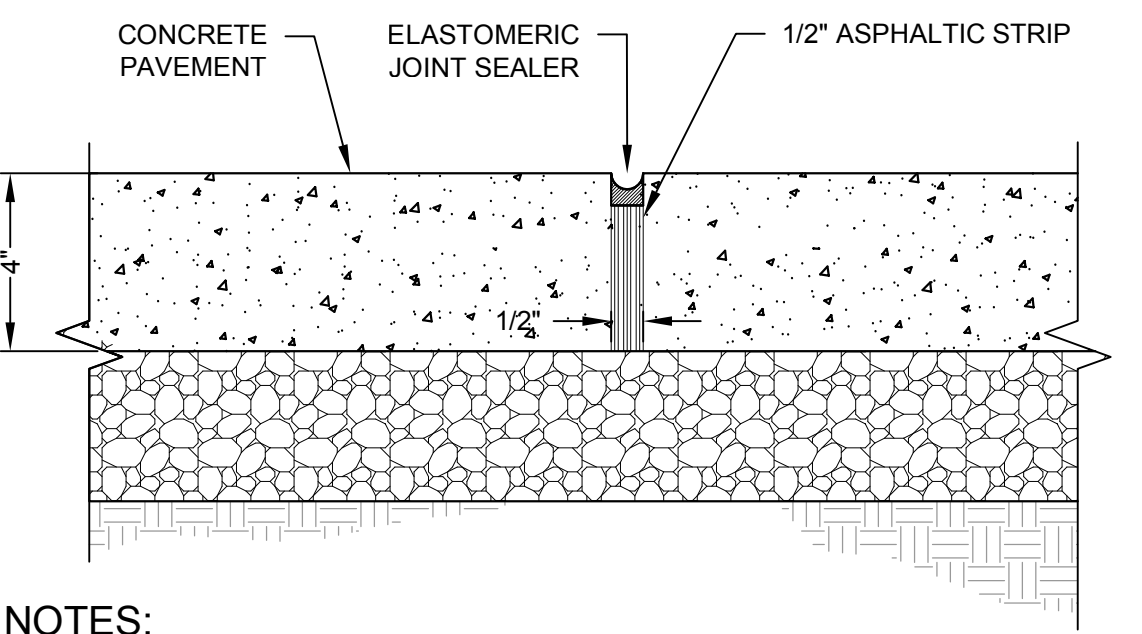
8 HANDRAIL ELEVATION AT RAMP SCALE: 3/4" = 1'-0"



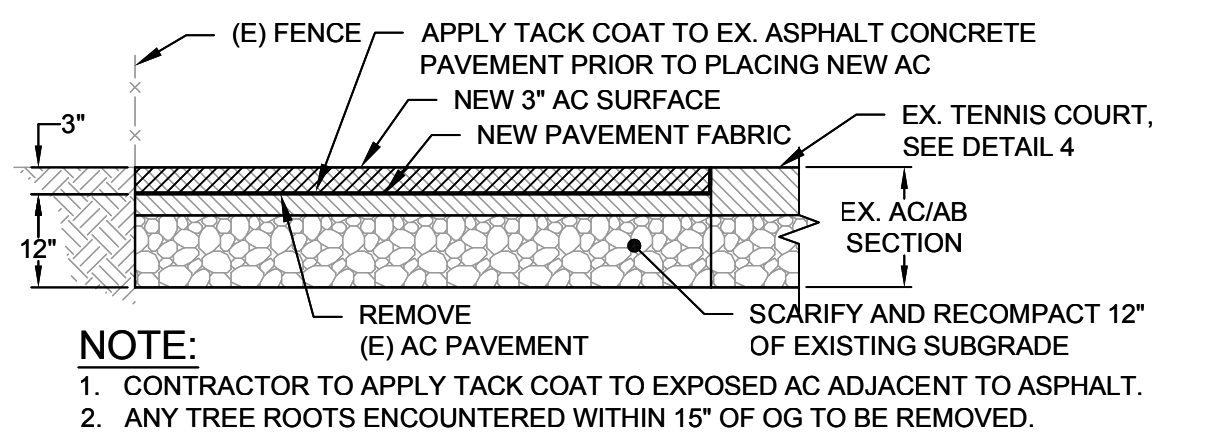
6 SIGN POST DETAIL SCALE: 1" = 1'



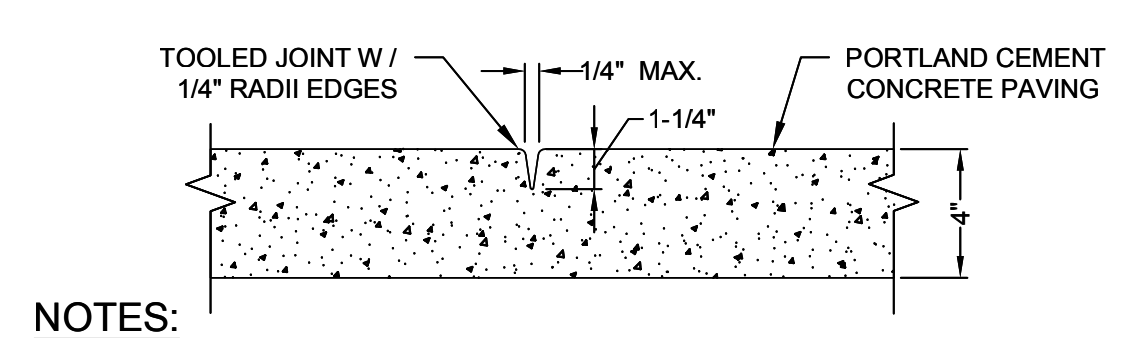
9 DETECTABLE WARNING SURFACE SCALE: NTS



10 EXPANSION JOINT FOR CONCRETE PAVEMENT SCALE: NTS



7 A.C. DIG OUT SCALE: 3/4" = 1'-0"



11 TOOLED CONTROL JOINT FOR PEDESTRIAN CONCRETE PAVEMENT SCALE: 3/4" = 1'-0"

NOTES:

1. THE WORDS "NO PARKING", SHALL BE PAINTED IN WHITE LETTERS NO LESS THAN 1'-0" HIGH AND LOCATED SO THAT VISIBLE TO TRAFFIC ENFORCEMENT OFFICIALS. SEE REVISED CALTRANS STD. PLAN RSP A90B FOR DETAILS OF THE "NO PARKING" PAVEMENT MARKING.
2. WHERE A VAN ACCESSIBLE PARKING SPACE IS PROVIDED, THE LOADING AND UNLOADING ACCESS AISLE SHALL BE 8'-0" WIDE MINIMUM, AND SHALL BE ON THE PASSENGER SIDE OF THE VEHICLE AS THE VEHICLE IS GOING FORWARD INTO THE PARKING SPACE.
3. A R100B (CA) SIGN SHALL BE POSTED IN A CONSPICUOUS PLACE AT EACH ENTRANCE TO OFF-STREET PARKING FACILITIES OR IMMEDIATELY ADJACENT TO AND VISIBLE FROM EACH STALL. THE SIGN SHALL INCLUDE THE ADDRESS WHERE THE TOWED VEHICLE MAY BE RECLAIMED AND THE TELEPHONE NUMBER OF THE LOCAL TRAFFIC LAW ENFORCEMENT AGENCY. (SEE PLAN FOR LOCATION)
4. ISA = INTERNATIONAL SYMBOL OF ACCESSIBILITY



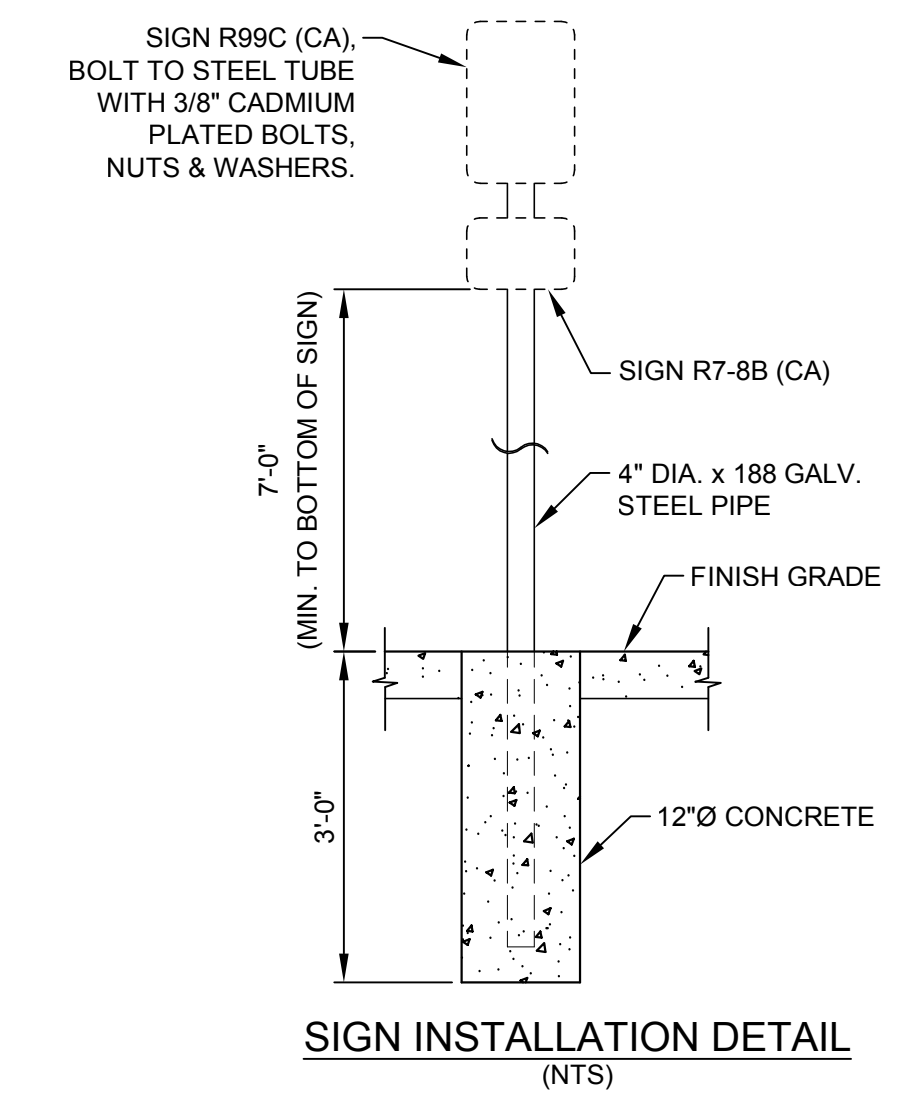
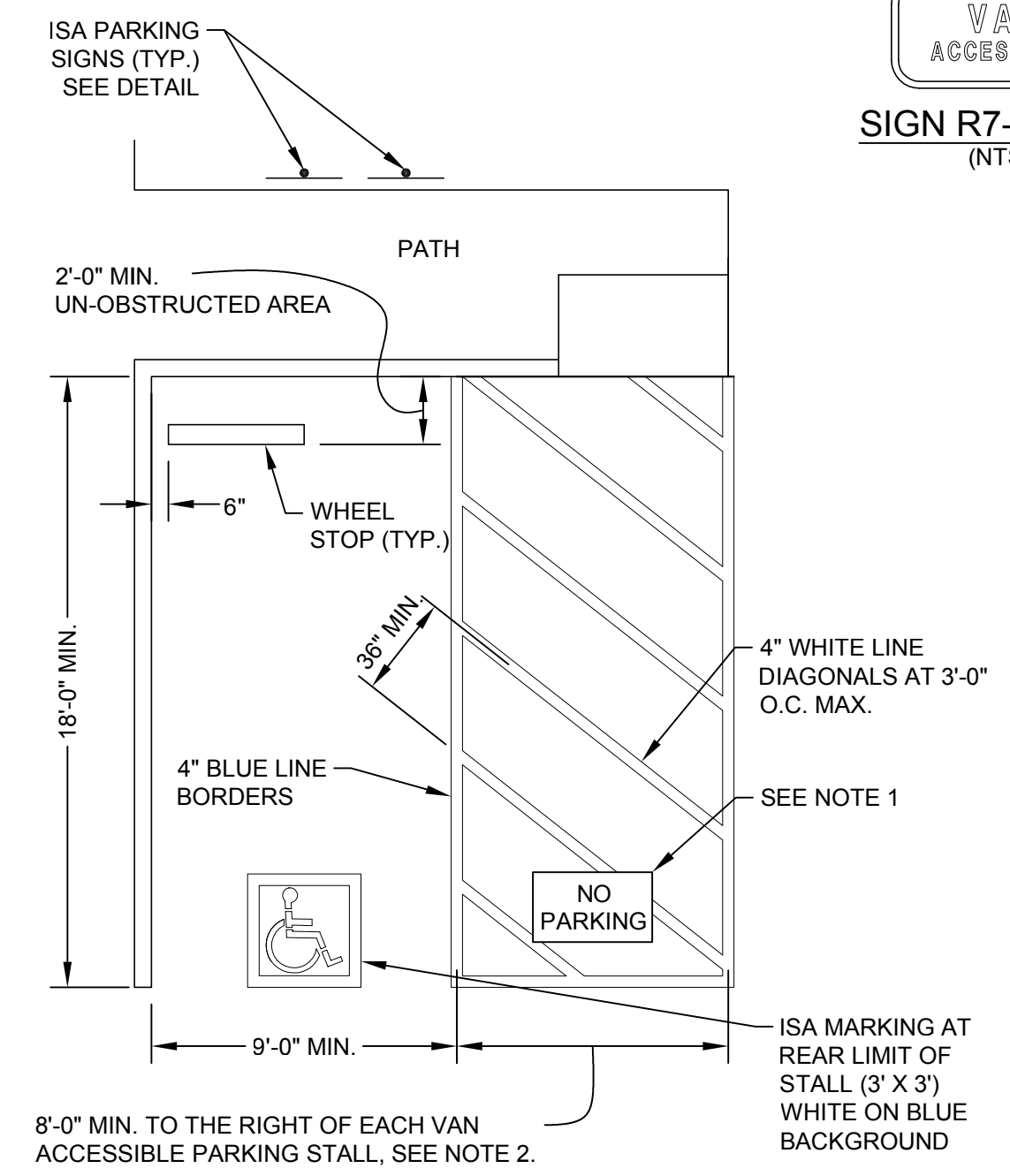
SIGN R7-8B (CA)
(NTS)



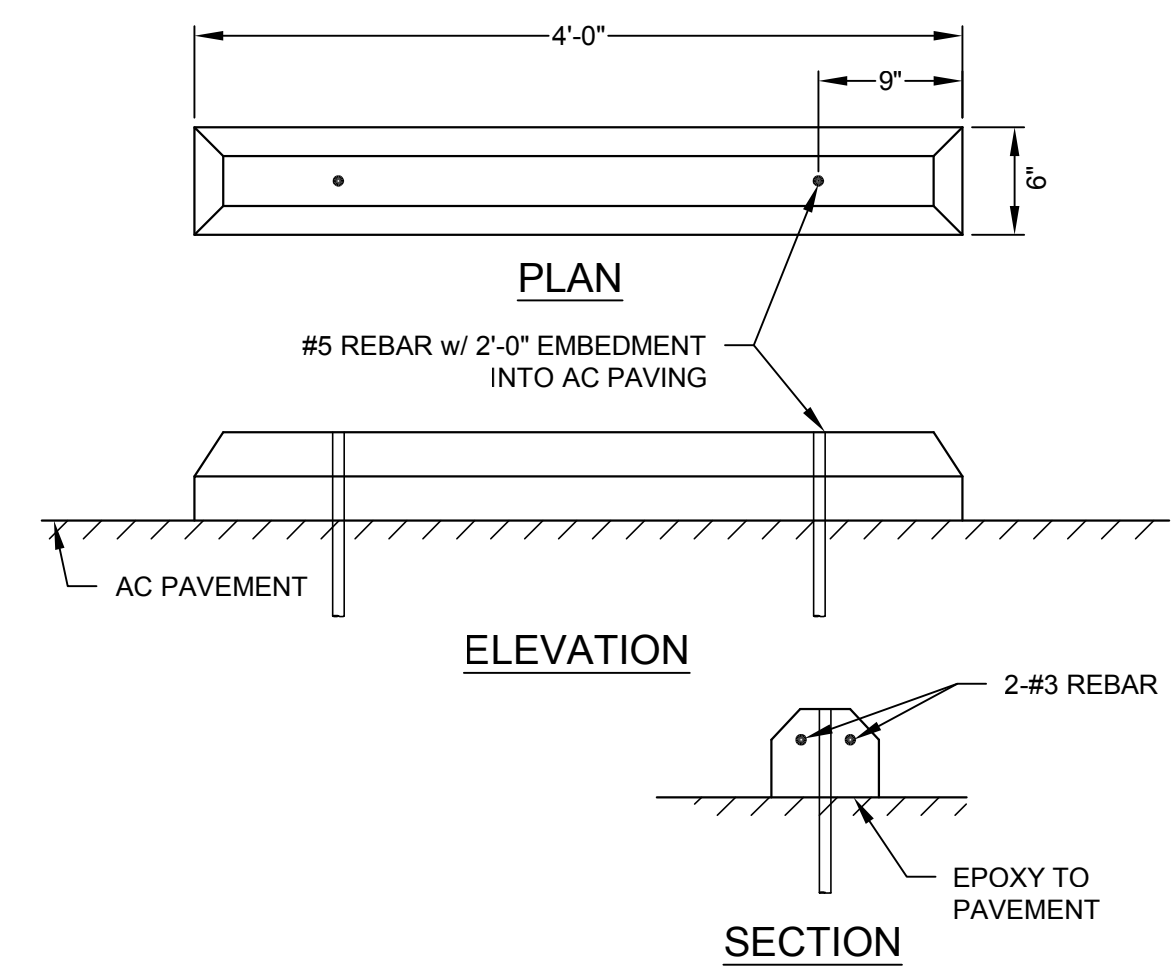
SIGN R99C (CA)
(NTS)



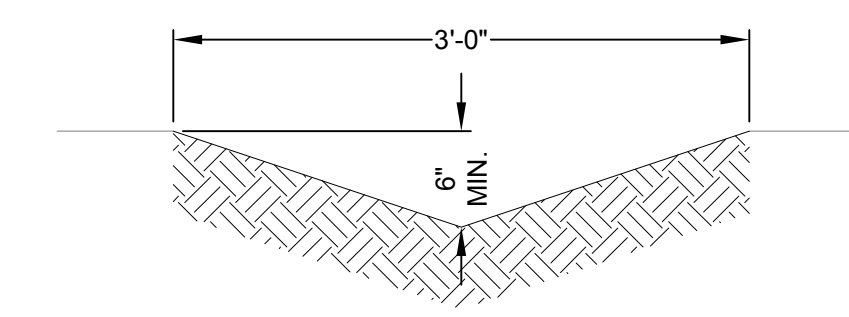
SIGN R100B (CA)
(NTS)



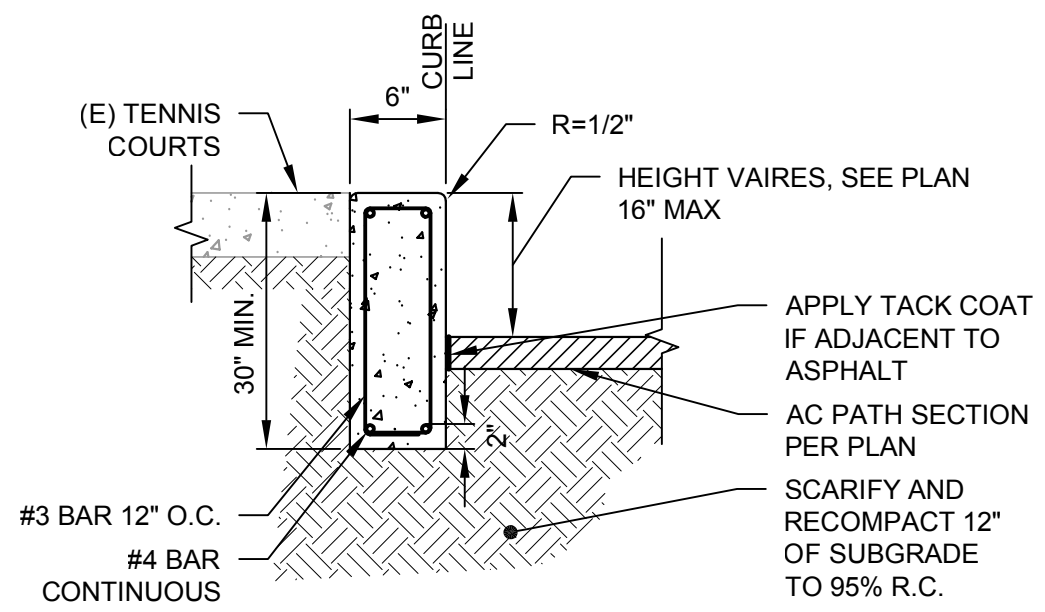
1 ACCESSIBLE PARKING STALL
SCALE: 1" = 5'



2 WHEEL STOP DETAIL
SCALE: N.T.S.



4 GRASS LINED SWALE @ 1%
SCALE: N.T.S.



NOTES:

1. CONTROL JOINTS CONSISTING OF 1" DEEP SCORES SHALL BE PLACED AT 10' INTERVALS O.C. - ALL SIDES EXCEPT BOTTOM.

3 STANDARD CONCRETE CURB
SCALE: N.T.S.

Rev	Date	Description
	3/15/18	ISSUED FOR BID

MLK ADA & TENNIS COURT IMPROVEMENTS
DETAILS
CITY OF SAUSALITO

City Of Sausalito
 County Of Marin
 State Of California

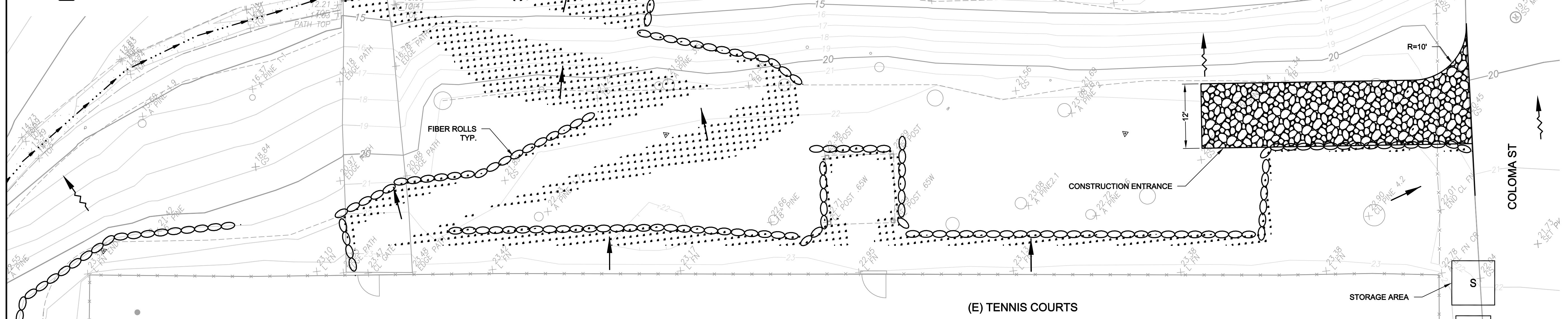
Prepared Under the Direction of:



Sheet	C5.1
Scale:	N/A
Date:	03/15/18
Project Number:	4.1162.02
Plan File:	D-5471-06

EROSION CONTROL LEGEND

- FIBER ROLLS (NOT A FIXED- APERTURE)
- SWALE OR DITCH
- PERMANENT 3-STEP HYDROSEED
- DIRECTION OF FLOW OR SLOPE
- EXISTING DIRECTION OF FLOW OR SLOPE
- CONCRETE WASHDOWN AREA
- NON HAZARDOUS STORAGE
- STORM INLET PROTECTION



POLLUTION CONTROL NOTES:

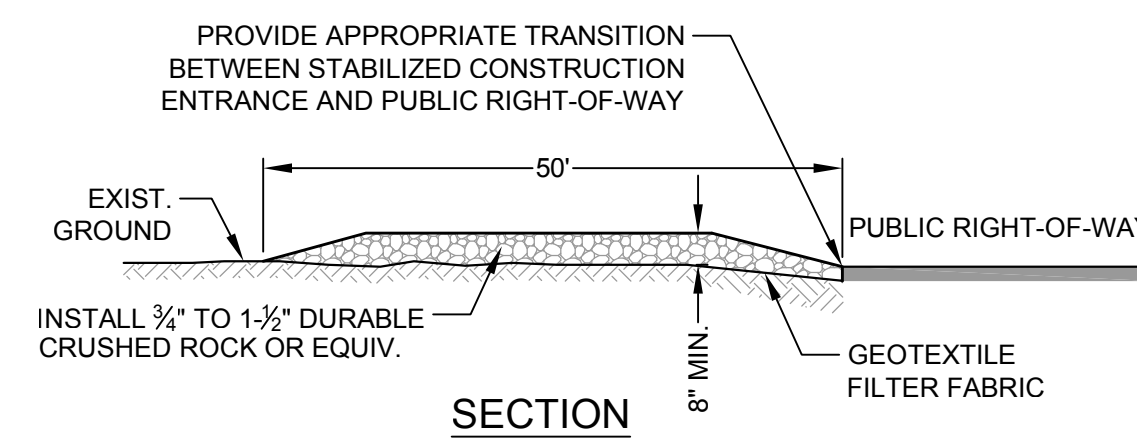
- IF SIGNIFICANT SEDIMENT OR OTHER VISUAL SYMPTOMS OF IMPURITIES ARE NOTICED IN THE STORM WATER, CONTACT THE CIVIL ENGINEER IMMEDIATELY.
- CONTRACTOR IS RESPONSIBLE FOR CONTINUOUS INSPECTION AND RESTORATION OF ALL ASPECTS OF THIS PLAN. SEDIMENT ON SIDEWALKS AND GUTTERS SHALL BE REMOVED BY SHOVEL OR BROOM AND PLACED IN STOCKPILES.
- ALL DUMPSTERS OR OTHER TRASH STORAGE ENCLOSURES SHALL BE UTILIZED SOLELY FOR NON-HAZARDOUS MATERIALS.
- ALL EMPLOYEES, CONTRACTORS, AND SUBCONTRACTORS ARE RESPONSIBLE FOR CONFORMING TO THE ELEMENTS SHOWN ON THIS PLAN OR RELATED DOCUMENTS.
- THE CONTRACTOR IS RESPONSIBLE FOR OBTAINING ALL PERMITS AND FILING ALL PLANS WITH RELATED AGENCIES ASSOCIATED WITH THEIR WORK. THIS SHALL INCLUDE, BUT NOT BE LIMITED TO, PERMITS FOR STORAGE OF HAZARDOUS MATERIALS, BUSINESS PLANS, PERMITS FOR STORAGE OF FLAMMABLE LIQUIDS, GRADING PERMITS, OR OTHER PLANS OR PERMITS REQUIRED BY MARIN COUNTY, THE CITY OF SAUSALITO, OR OTHER AGENCIES. ALL PROPERTY OWNERS, CONTRACTORS, OR SUBCONTRACTORS WORKING ON-SITE ARE INDIVIDUALLY RESPONSIBLE FOR OBTAINING AND SUBMITTING ANY BUSINESS PLANS OR PERMITS REQUIRED BY CITY, STATE OR LOCAL AGENCIES.
- CONTRACTOR MAY RELOCATE STORAGE, DELIVERY, OR WASH-OUT AREAS, TO SUIT THEIR OPERATIONS. RELOCATED LOCATION TO BE SHOWN ON PLANS MAINTAINED AT JOBSITE. CONTACT CIVIL ENGINEER FOR ANY PLAN REVISIONS. PLAN REVISIONS SHALL BE SUBMITTED TO CITY OF SAUSALITO IF REQUESTED. CONTRACTOR TO MAINTAIN SECONDARY CONTAINMENT AS NECESSARY TO PROHIBIT POLLUTION AND TOXIC MATERIALS FROM ENTERING STORM DRAIN.
- AFTER COMPLETION OF THE CURB, GUTTER, AND PAVING, OR CONCRETE V-DITCHES THE SILT FILTERS SHALL BE MODIFIED TO BURLAP SACKS FILLED WITH 3/4" DRAIN ROCK OR OTHER ACCEPTED BMP POSITIONED SURROUNDING EACH CATCH BASIN.

EROSION CONTROL NOTES:

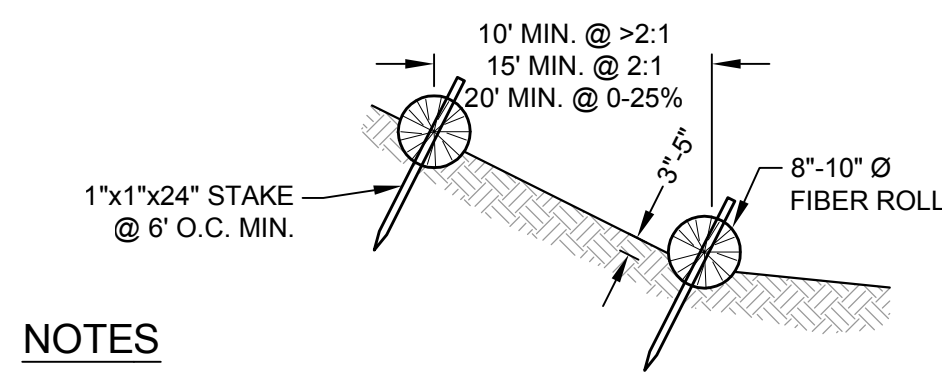
- NO VEHICLES SHALL BE ALLOWED TO TRACK OR SPREAD SOIL FROM THE CONSTRUCTION AREAS ONTO EXISTING PAVED PUBLIC STREETS. ANY VEHICLE OPERATING WITHIN THE PROJECT AREA AND OFF THE PAVED STREET SHALL CROSS A CONSTRUCTION ENTRANCE AS SHOWN HEREIN. THE ENTRANCE MAY BE MODIFIED BY THE CONTRACTOR TO FACILITATE HIS OPERATIONS.
- THE EROSION AND SEDIMENT CONTROL MEASURES WILL BE OPERABLE DURING THE RAINY SEASON, OCTOBER 15TH TO APRIL 15TH. NO GRADING WILL OCCUR BETWEEN OCTOBER 15TH AND APRIL 15TH, UNLESS AUTHORIZED BY THE DIRECTOR OF PUBLIC WORKS.
- DURING THE RAINY SEASON, ALL PAVED AREAS WILL BE KEPT CLEAR OF EARTH MATERIAL AND DEBRIS. THE SITE WILL BE MAINTAINED SO THAT A MINIMUM OF SEDIMENT-LADEN RUNOFF ENTERS THE STORM DRAIN SYSTEM. THESE PLANS SHALL REMAIN IN EFFECT UNTIL THE TRACT IMPROVEMENTS ARE ACCEPTED BY THE CITY OF SAUSALITO, AND ALL SLOPES ARE STABILIZED FROM EROSION.
- STRAW AND TACKIFIER WILL BE APPLIED BY OCTOBER 1ST TO ALL DISTURBED AREAS. ALL EXPOSED SLOPES ADJACENT TO PUBLIC RIGHTS OF WAY SHALL ALSO RECEIVE STRAW AND TACKIFIER. STRAW AND TACKIFIER TO BE APPLIED PER MANUFACTURER'S SPECIFICATIONS AND SHALL BE APPLIED AT A RATE OF 2 TONS PER ACRE MINIMUM.
- ROUGH GRADED DITCHES SHALL BE LINED WITH EROSION CONTROL BLANKETS AND THEN HYDROSEEDED.
- AFTER INSTALLATION OF CONCRETE IN DITCHES, INSTALL ONE SACKED ROCK FILTER DAM AT INLET UNTIL SLOPES ARE STABILIZED FROM EROSION.
- PRIOR TO START OF ANY CONSTRUCTION OR DEMOLITION, INSTALL PERIMETER FIBER ROLL.
- THIS PLAN ASSUMES THE COMPLETION OF GRADING AND STORM DRAIN FACILITIES. IF FACILITIES ARE NOT COMPLETED, CONTACT THE CIVIL ENGINEER FOR PLAN REVISIONS.
- ALL BANKS AND ALL GRADED AREAS SHALL BE HYDROSEEDED TO CONTROL EROSION BY OCTOBER 1ST.

URBAN RUNOFF POLLUTION NOTES:

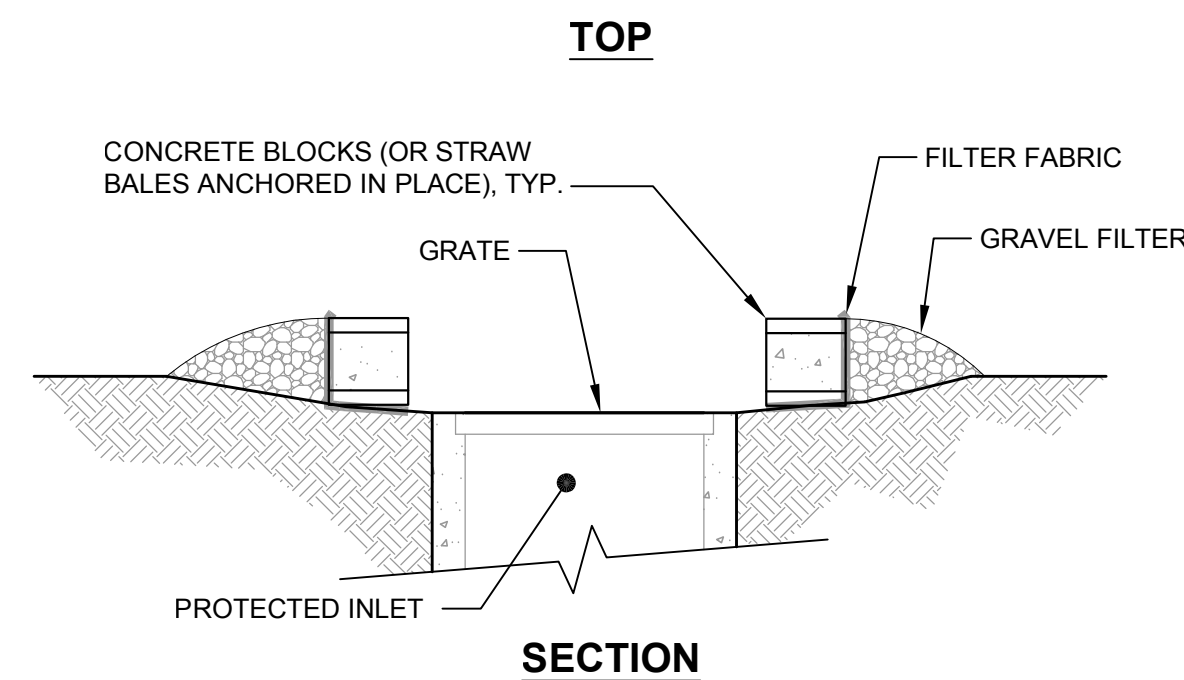
- STABILIZE ALL DENUDED AREAS AND MAINTAIN EROSION CONTROL MEASURES CONTINUOUSLY BETWEEN OCTOBER 15 AND APRIL 15.
- REMOVE SPOILS PROMPTLY AND AVOID STOCKPILING OF FILL MATERIALS WHEN RAIN IS FORECAST. IF RAIN THREATENS, STOCK- PILED SOILS AND OTHER MATERIALS SHALL BE TARPED, AT THE REQUEST OF THE CITY ENGINEER.
- STORE, HANDLE AND DISPOSE OF CONSTRUCTION MATERIALS AND WASTES SO AS TO PREVENT THEIR ENTRY TO THE STORM DRAIN SYSTEM. CONTRACTOR MUST NOT ALLOW CONCRETE, WASHWATERS, SLURRIES, PAINT OR OTHER MATERIALS TO ENTER CATCH BASINS OR TO ENTER SITE RUNOFF.
- USE FILTRATION OR OTHER MEASURES TO REMOVE SEDIMENT FROM DEWATERING EFFLUENT.
- NO CLEANING, FUELING OR MAINTAINING VEHICLES ON SITE SHALL BE PERMITTED IN ANY MANNER THAT ALLOWS DELETERIOUS MATERIALS TO ENTER CATCH BASINS OR TO ENTER SITE RUNOFF.
- USE OF PESTICIDES AND/ OR FERTILIZERS SHALL BE APPLIED AND CONTROLLED TO PREVENT POLLUTION RUNOFF.
- CONTRACTOR TO RELOCATE CONCRETE WASHDOWN, VEHICLE STORAGE DELIVERY, AND NON HAZARDOUS WASTE AREAS AS NECESSARY TO FACILITATE THEIR OPERATION, PROMOTE POLLUTION CONTROL AND TO MAINTAIN ACCESS TO ADJACENT BUILDINGS AND DRIVE AISLES.



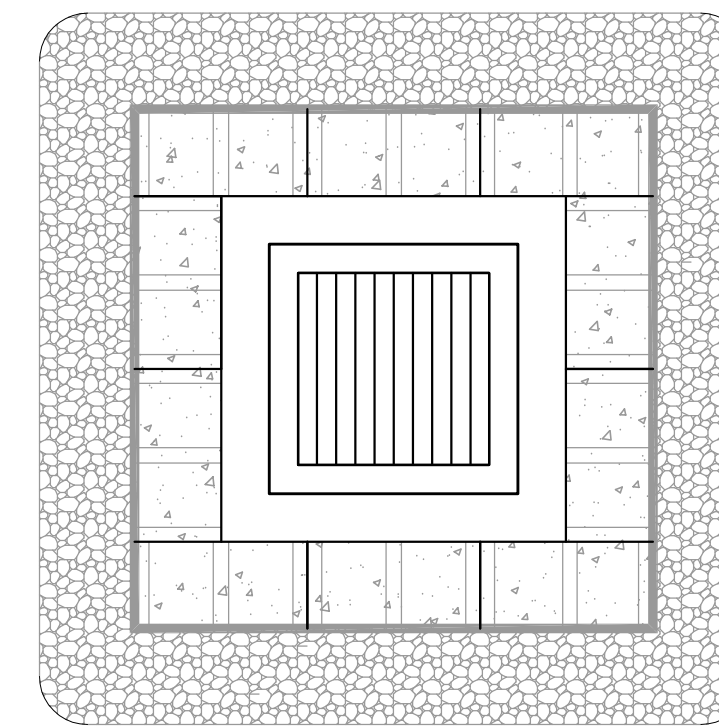
1 TEMPORARY STABILIZED CONSTRUCTION ENTRANCE
SCALE: NTS



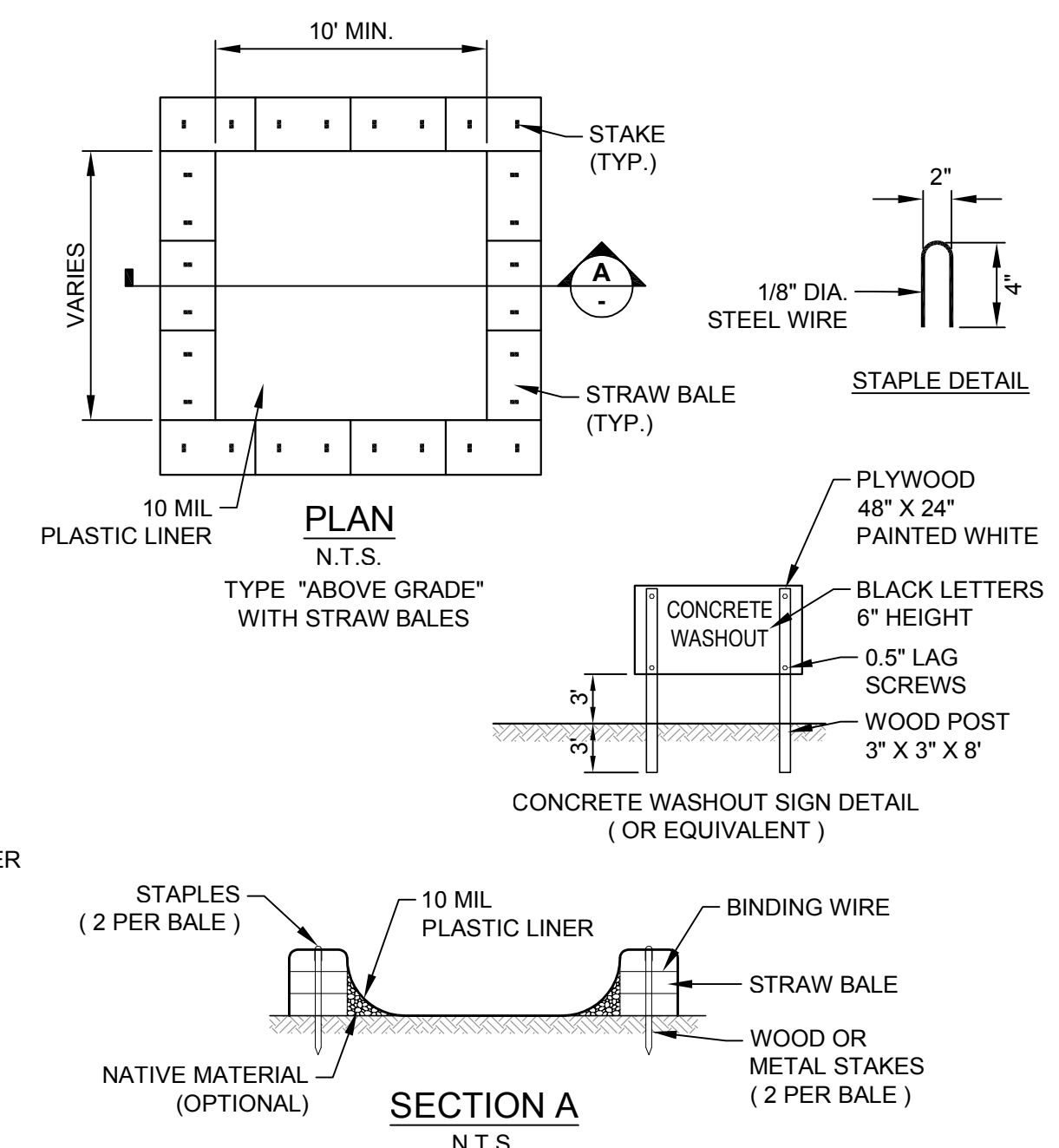
2 FIBER ROLL INSTALLATION DETAILS
SCALE: NTS



3 INLET PROTECTION DETAIL
SCALE: NTS



TOP



- NOTES:**
- ACTUAL LAYOUT DETERMINED IN FIELD.
 - THE CONCRETE WASHOUT SIGN SHALL BE INSTALLED WITHIN 30 FEET OF THE TEMPORARY CONCRETE WASHOUT FACILITY.

4 TEMPORARY CONCRETE WASHOUT DETAIL
SCALE: .

Rev	Date	Description	Designed	Drawn	Checked
	3/15/18	ISSUED FOR BID			

MLK ADA & TENNIS COURT IMPROVEMENTS
EROSION CONTROL PLAN
CITY OF SAUSALITO

City Of Sausalito
County Of Marin
State Of California

Prepared Under the Direction of:



Sheet **C6.0**

Scale: 1" = 10'
Date: 03/15/18
Project Number: 4.1162.02
Plan File: D-5471-07