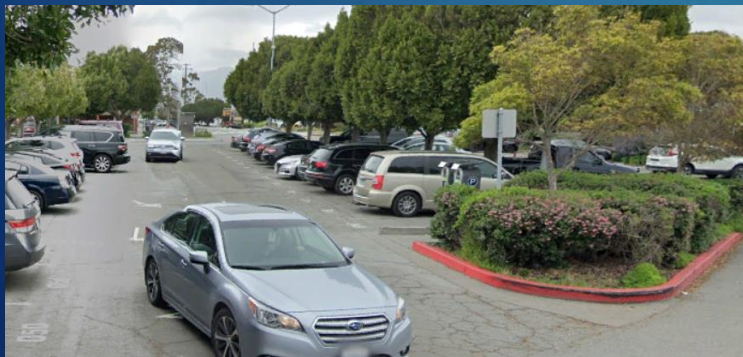




FERRY LANDSIDE IMPROVEMENT PROJECT

LOCAL ARCHITECT'S GROUP
PUBLIC FORUM
JULY 15, 2021



Tonight's meeting

2

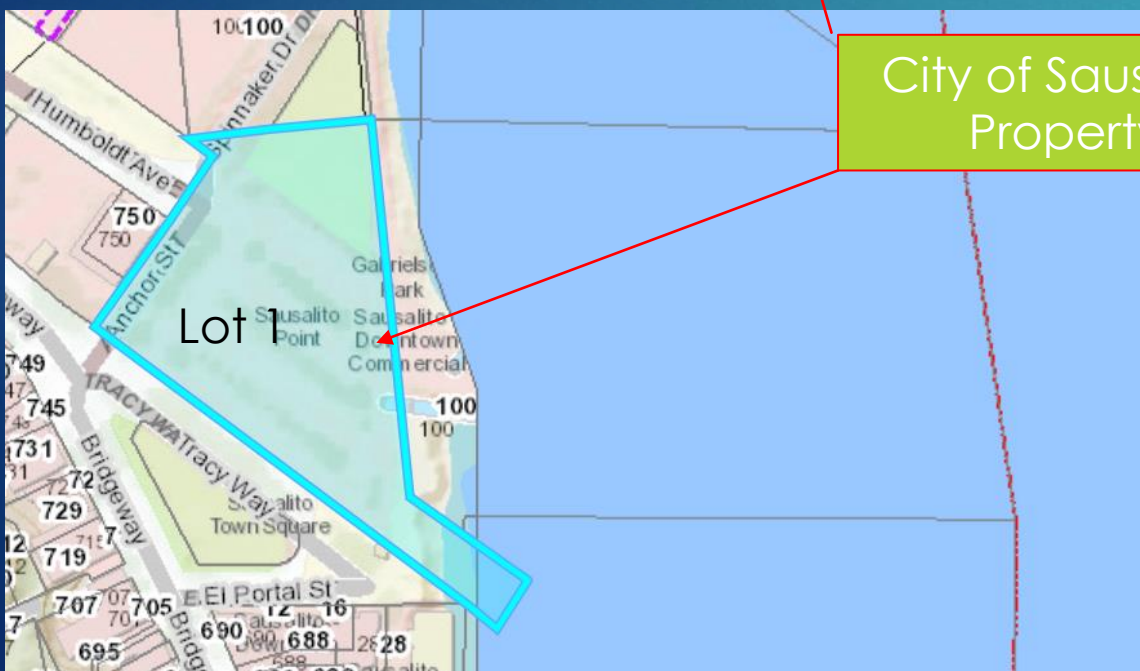
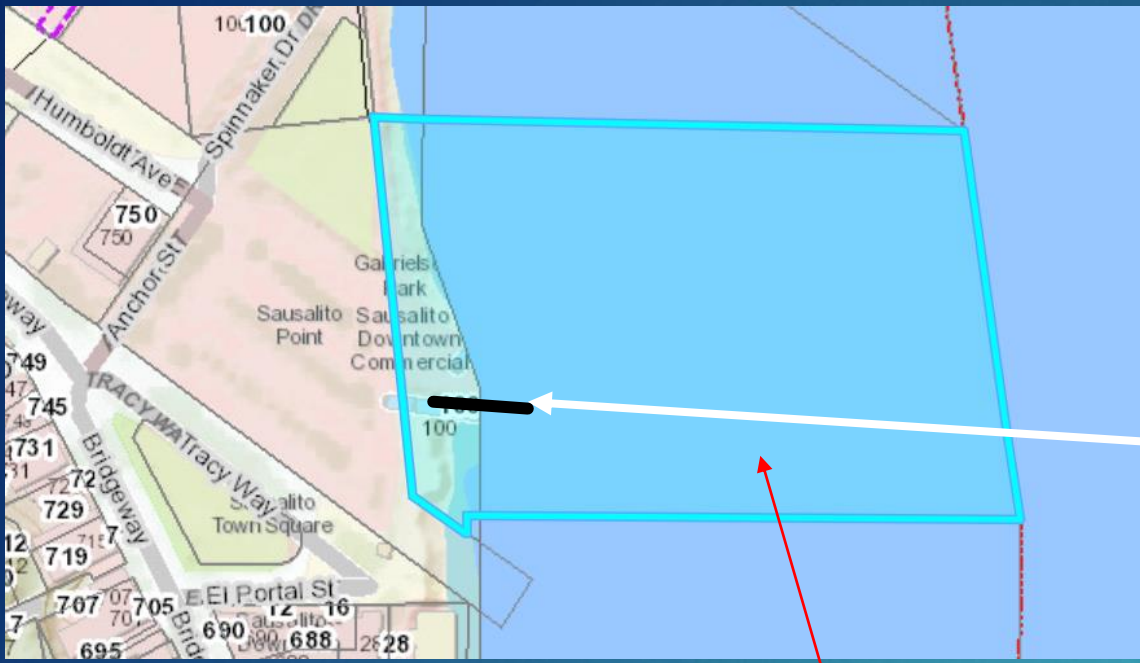
- ▶ Introductions
- ▶ Part 1 - Ferry Landside Review (1Hr)
 - ▶ Public Comment
- ▶ Part 2 - Downtown Parking Area Visioning (1Hr)
 - ▶ Public Comment



Part 1 – Ferry Landside Improvement Project

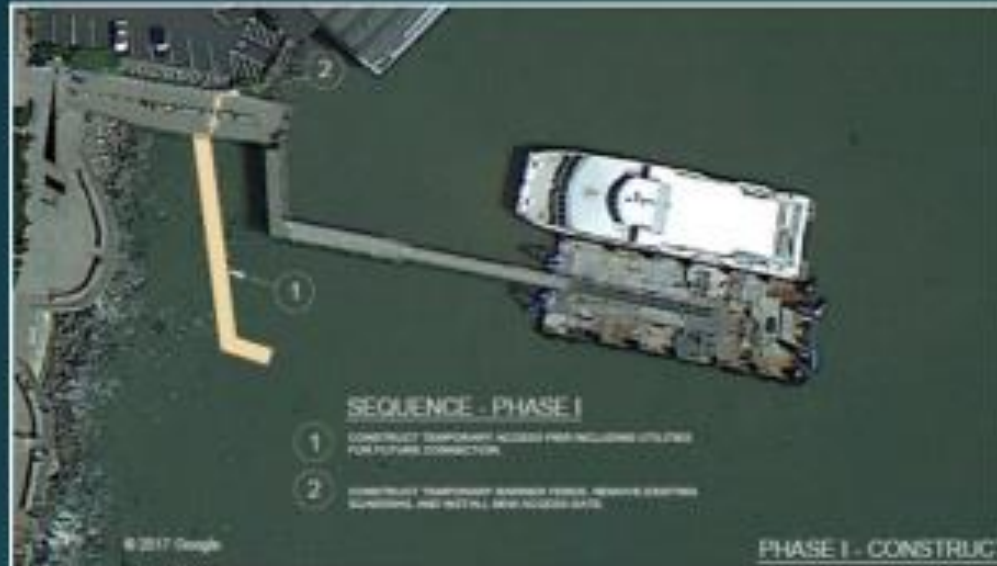


Golden Gate
Bridge Highway
Transportation
District (GGBHTD)
Leases this
property from the
City of Sausalito

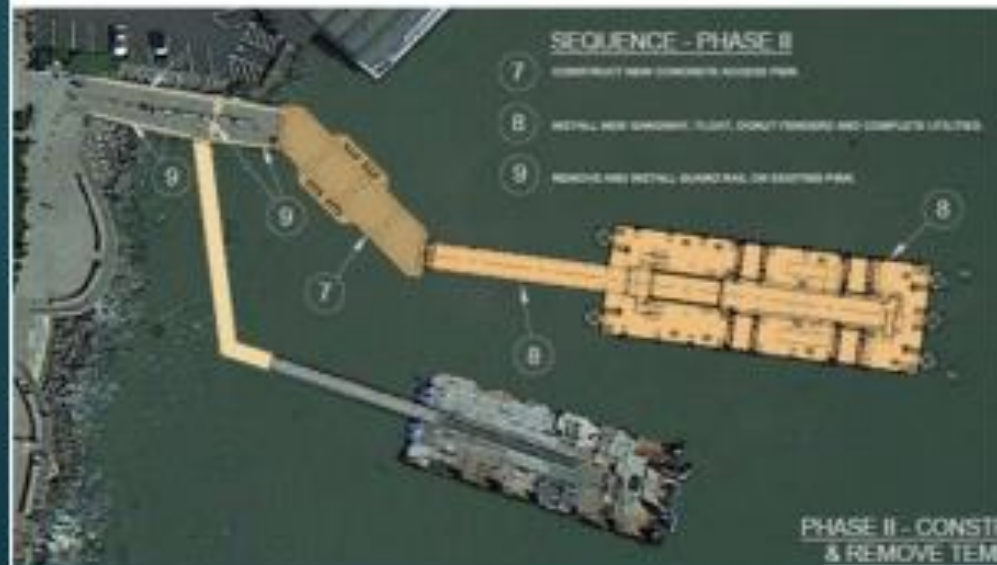
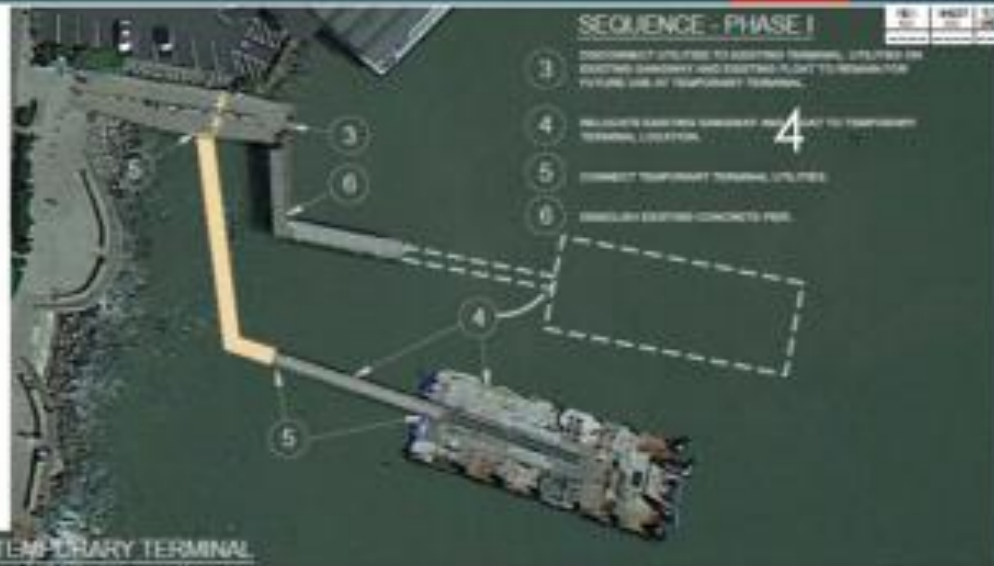


City of Sausalito
Property

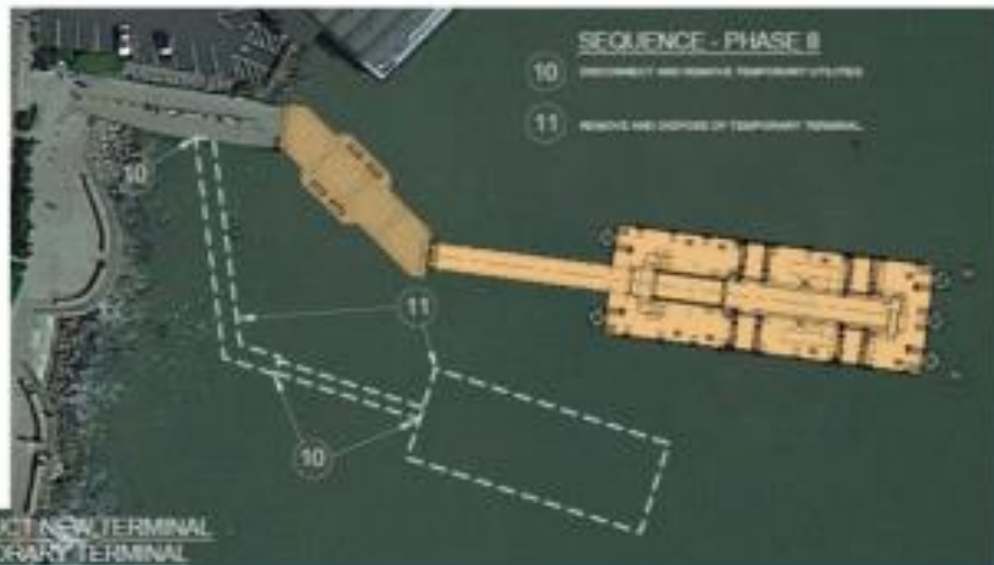
Lot 1



PHASE I - CONSTRUCT TEMPORARY TERMINAL

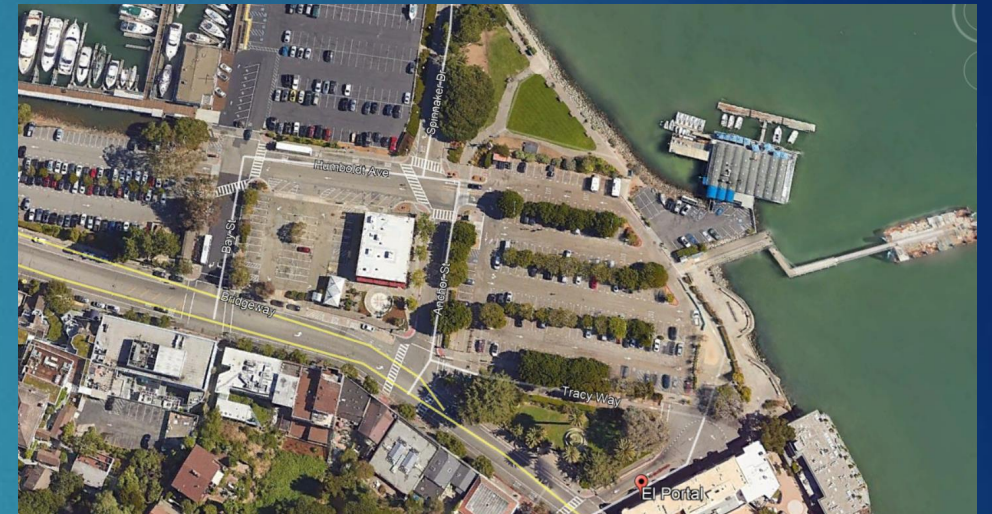


PHASE II - CONSTRUCT NEW TERMINAL & REMOVE TEMPORARY TERMINAL



FTA Grant Funding Guidelines

1. Enhances the Shoreside Ferry Plaza Promenade including passenger staging
2. Enhance Pedestrian and Bicycle Access routes to the Plaza
3. Better delineation for vehicles, pedestrians and bicycles access
4. Improve and widen areas for circulation and staging for the Ferry.
5. Add Ticket Vending Machines

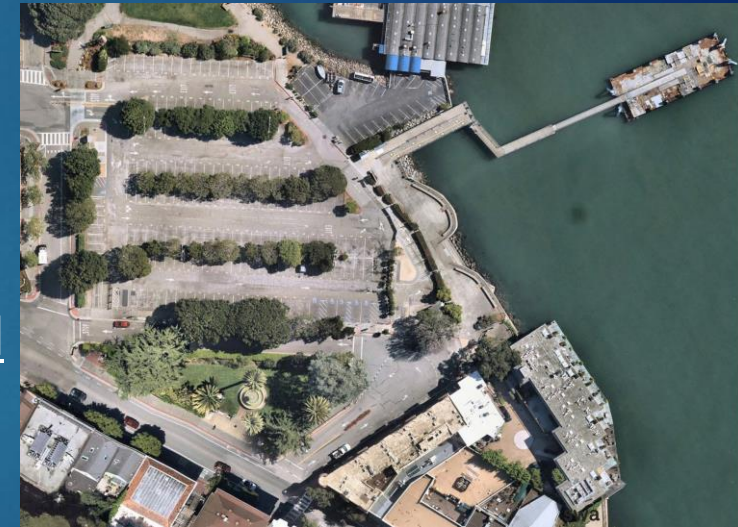


FTA Grant = \$2,000,000 GGBHTD = \$400,000
Total for the entire project = \$2,500,000

City = \$100,000

Local Professional Group Goals

- ▶ Utilize current project opportunities to make improvements to the Ferry Landside area that easily dovetail into future improvements to downtown.
- ▶ Utilization of current space and views
- ▶ Incorporation for future North-South Greenway
- ▶ Improve Pedestrian/Bicycle Circulation
- ▶ Community Identity and welcoming
- ▶ Address possible opportunities for future improvements (Phased Approach to the development of this Downtown area.)



Michael Rex	Jacques Ullman
Barbara Brown	Bill Hynes
Robert Hayes	



Former Bank of America Building

Parking Lot 1

Ferry Dock

Bridgeway

El Portal

EXISTING AERIAL PHOTO



- 1 FERRY LANDING PLAZA
- 2 IMPROVED DROPOFF/WALKWAY
- 3 GATEWAY PLAZA
- 4 BIKE PARKING/QUEUEING
- 5 SEASONAL BIKE VALET
- 6 CONNECTION TO N/S GREENWAY
- 7 WOONERF/LIVING STREET
- 8 OUTDOOR DINING
- 9 EXISTING TREES TO REMAIN
- 10 PLANTING/STORMWATER TREATMENT

OPTION 1 – INTERIM VISION

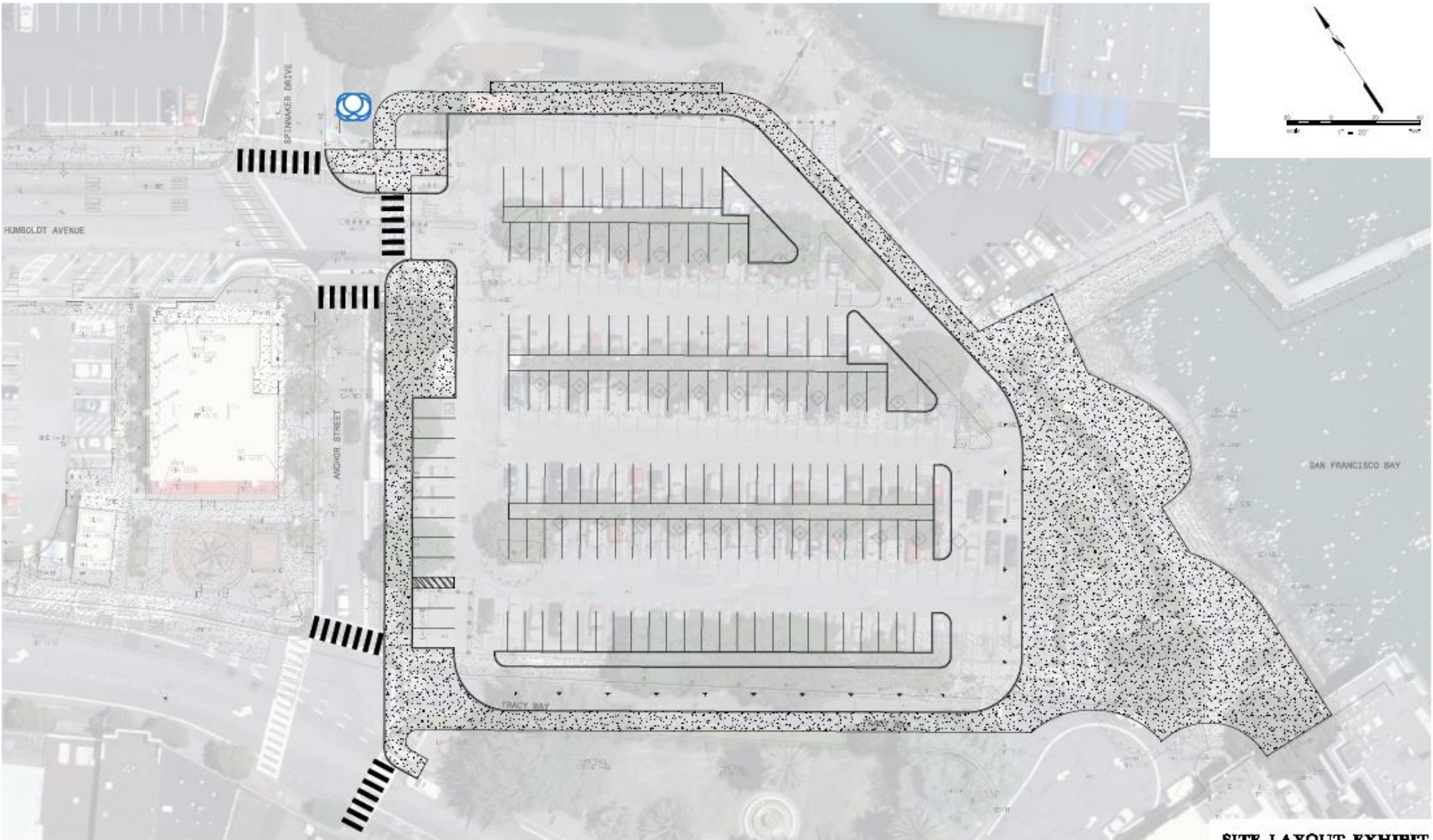


- 1 FERRY LANDING PLAZA
- 2 IMPROVED DROPOFF/WALKWAY
- 3 GATEWAY PLAZA
- 4 BIKE PARKING/QUEUEING
- 5 SEASONAL BIKE VALET
- 6 CONNECTION TO N/S GREENWAY
- 7 WOONERF/LIVING STREET
- 8 OUTDOOR DINING
- 9 EXISTING TREES TO REMAIN
- 10 PLANTING/STORMWATER TREATMENT



- 1 FERRY LANDING PLAZA
- 2 IMPROVED DROPOFF/WALKWAY
- 3 GATEWAY PLAZA
- 4 BIKE PARKING/QUEUEING
- 5 SEASONAL BIKE VALET
- 6 CONNECTION TO N/S GREENWAY
- 7 WOONERF/LIVING STREET
- 8 OUTDOOR DINING
- 9 EXISTING TREES TO REMAIN
- 10 PLANTING/STORMWATER TREATMENT
- 11 NEW PEDESTRIAN WALKWAY

OPTION 2 – INTERIM VISION 2
Additional Elements



NUMBER OF PARKING STALLS

	STANDARD	ACCESSIBLE	COMPACT	TOTAL
EXISTING	171	9	N/A	180
PROPOSED	76	9	72	157

SITE LAYOUT EXHIBIT
 SAUNALITO FERRY LANDINGS
 CITY OF SAUNALITO, CALIFORNIA
 JULY 2022



Part 1 - Comments from the Public

1. Are you in favor of the proposed changes to the Ferry Landside?
2. What are the most important amenities to the plaza?
3. Would you be in favor of this project if it decreases parking in lot 1 (Little or A lot)?
4. Long Vision

Part 2 – Downtown Vision



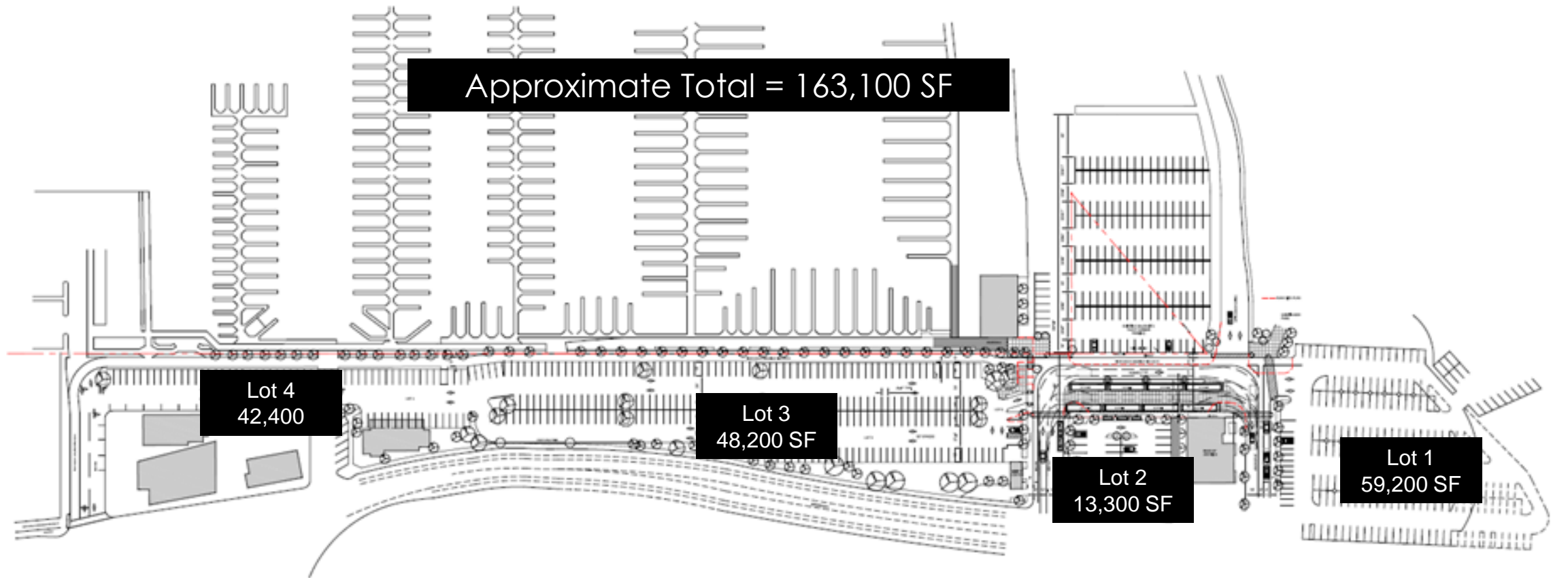
Local Architects Group

- ▶ The Local Architects group has continued to meet to strategize possible improvements to the downtown parking areas and have developed additional concepts that have relevance to the Ferry Landside Project



OPTION 3 – ULTIMATE VISION

Rough Parking Lot Areas



NORTH/SOUTH GREENWAY

Parking Calculations
Lot 3/4 Lot 1
Columns 200 100

▶ BILL HYNES DETAILED VISIONING DOCUMENTS

Part 2 - Comments from the Public

1. What changes should be considered in the Parking Lots in Down Town?
2. Should the City Consider a ballot measure to allow a Park setting or other Pedestrian Civic Improvements in the Parking lots.
3. What Amenities should be considered in a long term vision?

Next steps

- ▶ Return to City Council with Results of this meeting and the survey results.
- ▶ Proceed with the design for the Ferry Landside Project.
- ▶ Continue to search for funding associated with long term improvements for the City Parking lots.

- ▶ Council may consider a ballot measure to change Ordinance 1128



(h) The first sentence of the first full paragraph on page 5-16 of the General Plan is amended to read as follows: “Based on the policies of the General Plan, the amount of public land area provided in the Downtown for public parking would not be increased in any amount or decreased by greater than five percent from the existing level.”

