

City of Sausalito Public Safety Facilities
Police Station 29 Caledonia Street
Fire Station 333 Johnson Street
Sausalito, CA

Monthly Report
No. 2 January 2008



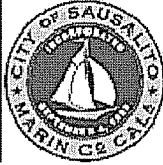
Rendering of the new Buildings



Previous Fire Station and Police Station

Monthly Report – New Construction
No. 2 January 2009

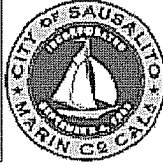
601
1-13-09
1



City of Sausalito Public Safety Facilities
Police Station 29 Caledonia Street
Fire Station 333 Johnson Street
Sausalito, CA

Table of Contents

1. **Project Data**
 - 1.1 Project Description
 - 1.2 Project Team
2. **Executive Summary**
3. **Key Project Issues**
4. **Project Schedule**
 - 4.1 Critical path Schedule
5. **Construction Contract and Budget**
6. **Progress Photos**



City of Sausalito Public Safety Facilities
Police Station 29 Caledonia Street
Fire Station 333 Johnson Street
Sausalito, CA

1 PROJECT DATA

1.1 Project Description

The Project is the Design and Construction of the Public Safety Facilities for the City of Sausalito. These Facilities are the Police and Fire Stations. These will be two separate buildings on two separate sites. The Police station will be located at 29 Caledonia St. and the Fire Station will be located at 333 Johnson St. The approximate square footage of the new fire station has been revised to 11,703 S.F. and the new police station revised to 8,371 S.F. Construction is scheduled to begin in October 2008. Current projection for completion is 14 months.

1.2 Project Team

Owner

City of Sausalito
Sausalito City Council
Adam Politzer, City Manager
Jonathon Goldman, Director of Public Works

Architect

Glass Architects
Eric Glass, Principal

Construction Manager

Swinerton Management & Consulting
John Baker, Project Executive
Loren Umbertis, Project Manager

General Contractor

Alten Construction
Bob Alten, President
Andrew Nortz, Project Manager
Paul Fitzgerald, Superintendent

Civil Engineer - Survey

BKF Engineers

Geotechnical Engineers

Consolidated Engineering

Environmental Engineer

GPI Environmental Management

Initial Study/Mitigated Negative Declaration

Pacific Municipal Consultants



City of Sausalito Public Safety Facilities

Police Station 29 Caledonia Street

Fire Station 333 Johnson Street

Sausalito, CA

2 EXECUTIVE SUMMARY

Notice to Proceed was issued to Alten Construction on October 9th, 2008, for the Public Safety Facilities Project. The contract project duration is 420 calendar days. As of this report, January 5th, the project is approximately 3 months underway.

Fire Department Site: Alten and the City of Sausalito removed the underground tanks in November. Additional soils testing was conducted on the spoils to determine what, if any, contaminants were contained within the soil. Testing concluded that a majority of the soil was considered to be Class II – non hazardous, and in mid-December this soil was off-hauled to a landfill site. A smaller amount of soil, immediately surrounding the location of the tanks, was determined to contain higher levels of gasoline residuals, and was transported to a different landfill capable of accepting this soil. As of mid-December, all spoils from the underground tank site was removed from the site. Alten proceeded to in-fill the excavation area with clean soil. As part of the process, AEW, the City's environmental Engineer, conducted groundwater sampling at multiple locations around the excavation and the results indicated that the existence of any contaminants were below the ESL (Environmental Screening Levels) thresholds as stipulated by the Regional Water Quality Control Board. This was a very good result. We are now in the process of obtaining a Closure Report for our site.

Unfortunately, the existence of the tanks and the processes for their removal will result in approximately a month and a half of delay to the Project.

Getting back on track, Alten delivered the materials for the Tubex Pile System and will begin their installation in early January 2009.

Police Station Site: Alten began installing the Temporary Shoring. However, during the installation, it was discovered that the type of bedrock required for the proper installation, was not present as expected. The bedrock in that area was not at consistent and regular depths as anticipated, but varied slightly from location to location. This required that an underpinning system be designed and installed at the adjacent structure. This underpinning system was completed in December. As a result of the inconsistent soil conditions, it was decided that Alten would provide a temporary shoring system that would incorporate a tie-back system as well as soldier piles to provide support to the adjacent hillside. The soldier pile installation was started in late December and will continue during the first half of January.

As a result of heavy rains and inconsistent soil conditions, a small amount of movement did occur at the southwest corner of the site that resulted in damage to an adjacent property owner's fence and yard area. Swinerton Management & Consulting, along with Alten Construction, has been in contact with this property owner. It will be required to repair this fence and address the additional



City of Sausalito Public Safety Facilities
Police Station 29 Caledonia Street
Fire Station 333 Johnson Street
Sausalito, CA

movement of soil. The extent of the repair will need to be assessed and Alten Construction will be assessed the cost of the repair work.

Alten Construction will continue to install the temporary shoring, which is scheduled to be completed in mid-January, after which, attention will be focused upon the installation of the permanent retaining walls for the Police Department building and site work.

3 KEY PROJECT ISSUES

The discovery of the tanks at the Fire Department site did present a challenge to the Project. It is expected that the delay caused by the discovery, the subsequent removal and testing, and the delivery of new soil may impact the Project Schedule approximately 1.5 months. In addition to the project delay, there will be additional costs including extended General Conditions for the delay period, as well as costs associated with the removal of affected soil. These costs are being calculated and will be presented to the City of Sausalito as a Change Order.

At the time of this report, the Project is back to the regularly scheduled activities. The pile installation will be completed by mid-January and site work for the Fire Department site will proceed.

The shoring of the hillside adjacent to the Police Department has also been a challenge, but all issues related to the temporary shoring appear to have been resolved and that portion of the Project is proceeding as weather and site conditions allow. Our geotechnical consultant has been closely involved with the shoring installation and has been present regularly providing observation. As part of the general progress, surveyors have been hired to conduct periodic monitoring of the adjacent structures and the retaining wall after each significant phase of the Project.

As previously mentioned in the executive summary, there was damage caused to an adjacent property owner's perimeter fence and a portion of landscaped area. This was a result of significant rains and unexpected soil conditions. This damage will need to be addressed and repaired and because this was the result of construction activities, Alten Construction will be responsible for the remediation. SMC and Alten have been in regular contact with the adjacent property owners and the extent of the damage will be assessed and dealt with accordingly. There was no damage to the property owner's residence, but limited to the fence and a portion of landscaping approximately 100' from the residence. Swinerton Management & Consulting is closely monitoring this unfortunate issue.



City of Sausalito Public Safety Facilities
Police Station 29 Caledonia Street
Fire Station 333 Johnson Street
Sausalito, CA

4 PROJECT SCHEDULE

Critical Path Schedule from Alten Construction attached.

Activity ID	Activity Description	Orig Dur	Early Start	Early Finish	Total Float	2009												2010											
						O	N	D	J	F	M	A	M	J	J	A	S	O	N	D	O	N	D	J	F	M	A		
MILESTONES																													
00100	NOTICE TO PROCEED	0	09OCT08A																										
00200	CONTRACT DURATION	420	09OCT08A	02DEC09	55													CONTRACT DURATION											
SUBMITTALS/PROCUREMENT																													
01500	PREPARE / SUBMIT PILING	17	09OCT08A	05NOV08A		PREPARE / SUBMIT PILING																							
01600	REVIEW / APPROVE PILING	5	06NOV08A	14NOV08A		REVIEW / APPROVE PILING																							
01700	PROCURE / DELIVER PILING (INCL IND. PROGRAM)	10	17NOV08A	10DEC08	22	PROCURE / DELIVER PILING (INCL IND. PROGRAM)																							
01720	PREPARE / SUBMIT SHORING	13	09OCT08A	27OCT08A		PREPARE / SUBMIT SHORING																							
01730	REVIEW / APPROVE SHORING	19	28OCT08A	21NOV08A		REVIEW / APPROVE SHORING																							
01800	PREPARE / SUBMIT INTEGRAL COLOR CONCRETE PAVING	40	09OCT08A	22DEC08	134	PREPARE / SUBMIT INTEGRAL COLOR CONCRETE PAVING																							
01900	REVIEW / APPROVE INTEGRAL COLOR CONCRETE PAVING	8	23DEC08	07JAN09	134	REVIEW / APPROVE INTEGRAL COLOR CONCRETE PAVING																							
02000	PROCURE / DELIVER COLOR CONC PAVING MATERIALS	10	08JAN09	22JAN09	134	PROCURE / DELIVER COLOR CONC PAVING MATERIALS																							
02100	PREPARE / SUBMIT PLANTING AND IRRIGATION	60	09OCT08A	03NOV08A		PREPARE / SUBMIT PLANTING AND IRRIGATION																							
02200	REVIEW / APPROVE PLANTING AND IRRIGATION	8	04NOV08A	18NOV08A		REVIEW / APPROVE PLANTING AND IRRIGATION																							
02300	PROCURE / DELIVER PLANTING AND IRRIGATION	20	19NOV08A	15DEC08	268	PROCURE / DELIVER PLANTING AND IRRIGATION																							
02400	PREPARE / SUBMIT CONCRETE REINFORCEMENT	20	09OCT08A	15DEC08	23	PREPARE / SUBMIT CONCRETE REINFORCEMENT																							
02500	REVIEW / APPROVE CONCRETE REINFORCEMENT	8	16DEC08	29DEC08	23	REVIEW / APPROVE CONCRETE REINFORCEMENT																							
02600	PROCURE / DELIVER CONCRETE REINFORCEMENT	5	30DEC08	07JAN09	23	PROCURE / DELIVER CONCRETE REINFORCEMENT																							
02700	PREPARE / SUBMIT CONCRETE MIX DESIGNS	20	09OCT08A	15DEC08	33	PREPARE / SUBMIT CONCRETE MIX DESIGNS																							
02800	REVIEW / APPROVE CONCRETE MIX DESIGNS	8	16DEC08	29DEC08	33	REVIEW / APPROVE CONCRETE MIX DESIGNS																							
03000	PREPARE / SUBMIT VAPOR CONTROL	30	09OCT08A	30OCT08A		PREPARE / SUBMIT VAPOR CONTROL																							
03100	REVIEW / APPROVE VAPOR CONTROL	8	31OCT08A	10NOV08A		REVIEW / APPROVE VAPOR CONTROL																							
03200	PROCURE / DELIVER VAPOR CONTROL (AVAILABLE)	5	11NOV08A	17NOV08A		PROCURE / DELIVER VAPOR CONTROL (AVAILABLE)																							
03300	PREPARE / SUBMIT CMU	30	09OCT08A	01DEC08A		PREPARE / SUBMIT CMU																							
03400	REVIEW / APPROVE CMU	8	02DEC08A	10DEC08	80	REVIEW / APPROVE CMU																							
03500	PROCURE / DELIVER CMU	10	11DEC08	24DEC08	80	PROCURE / DELIVER CMU																							
03600	PREPARE / SUBMIT CAST STONE MASONRY	60	09OCT08A	09JAN09	156	PREPARE / SUBMIT CAST STONE MASONRY																							
03700	REVIEW / APPROVE CAST STONE MASONRY	8	13JAN09	22JAN09	156	REVIEW / APPROVE CAST STONE MASONRY																							
03800	PROCURE / DELIVER CAST STONE MASONRY	40	23JAN09	20MAR09	156	PROCURE / DELIVER CAST STONE MASONRY																							
03900	PREPARE / SUBMIT STRUCTURAL STEEL	27	09OCT08A	14NOV08A		PREPARE / SUBMIT STRUCTURAL STEEL																							
04000	REVIEW / APPROVE STRUCTURAL STEEL	8	17NOV08A	10DEC08	78	REVIEW / APPROVE STRUCTURAL STEEL																							
04100	PROCURE / DELIVER STRUCTURAL STEEL	45	11DEC08	19FEB09	78	PROCURE / DELIVER STRUCTURAL STEEL																							
04500	PREPARE / SUBMIT STEEL DECKING	35	09OCT08A	14NOV08A		PREPARE / SUBMIT STEEL DECKING																							
04600	REVIEW / APPROVE STEEL DECKING	8	17NOV08A	10DEC08	83	REVIEW / APPROVE STEEL DECKING																							
04700	PROCURE / DELIVER STEEL DECKING	40	11DEC08	12FEB09	83	PROCURE / DELIVER STEEL DECKING																							
04800	PREPARE / SUBMIT METAL STAIRS	22	09OCT08A	22DEC08	53	PREPARE / SUBMIT METAL STAIRS																							

Sheet 1 of 15

Start Date: 09OCT08
 Finish Date: 27MAR10
 Data Date: 09DEC08
 Run Date: 10DEC08 23:03

Legend:
 Early Bar
 Progress Bar
 Critical Activity

ALTEN CONSTRUCTION, INC.

SAUSOLITO PUBLIC SAFETY BUILDINGS

12/09/08 UPDATE

ALL ACTIVITIES

Date: _____

Revision: _____

Checked: _____

Approved: _____

1-13-09

7

© Primavera Systems, Inc.

Activity ID	Activity Description	Orig Dur	Early Start	Early Finish	Total Float	2010																
						O	N	D	J	F	M	A	M	J	J	A	S	O	N	D	J	F
11800	REVIEW / APPROVE ACOUSTICAL PANEL CEILINGS	8	20OCT08A	09DEC08	229																	
11900	PROCURE / DELIVER ACOUSTICAL CEILINGS	10	10DEC08	23DEC08	229																	
12000	PREPARE / SUBMIT RESILIENT FLOORING	60	09OCT08A	26JAN09	202																	
12100	REVIEW / APPROVE RESILIENT FLOORING	8	27JAN09	05FEB09	202																	
12200	PROCURE / DELIVER RESILIENT FLOORING	20	06FEB09	06MAR09	202																	
12600	PREPARE / SUBMIT RESILIENT ATHLETIC FLOORING	60	09OCT08A	26JAN09	205																	
12700	REVIEW / APPROVE RESILIENT ATHLETIC FLOORING	8	27JAN09	05FEB09	205																	
12800	PROCURE / DELIVER RESILIENT ATHLETIC FLOORING	20	06FEB09	06MAR09	205																	
12900	PREPARE / SUBMIT CARPETING	60	09OCT08A	09JAN09	212																	
13000	REVIEW / APPROVE CARPETING	8	13JAN09	22JAN09	212																	
13100	PROCURE / DELIVER CARPETING	20	23JAN09	20FEB09	212																	
13200	PREPARE / SUBMIT PAINTING	60	09OCT08A	09JAN09	202																	
13300	REVIEW / APPROVE PAINTING	8	13JAN09	22JAN09	202																	
13400	PROCURE / DELIVER PAINTING	5	23JAN09	29JAN09	202																	
13500	PREPARE / SUBMIT VISUAL DISPLAY SURFACES	60	09OCT08A	09JAN09	234																	
13600	REVIEW / APPROVE VISUAL DISPLAY SURFACES	8	13JAN09	22JAN09	234																	
13700	PROCURE / DELIVER MARKERBOARDS	20	23JAN09	20FEB09	234																	
13800	PREPARE / SUBMIT SIGNAGE	40	09OCT08A	26JAN09	203																	
13900	REVIEW / APPROVE SIGNAGE	8	27JAN09	05FEB09	203																	
14000	PROCURE / DELIVER SIGNAGE	40	06FEB09	03APR09	203																	
14100	PREPARE / SUBMIT TOILET COMPARTMENTS / ACCESS.	40	09OCT08A	31OCT08A																		
14200	REVIEW / APPROVE TOILET COMPARTMENTS / ACCESS.	8	03NOV08A	08DEC08A																		
14300	PROCURE / DELIVER TOILET COMPARTMENTS / ACCESS.	40	09DEC08	10FEB09	239																	
14400	PREPARE / SUBMIT WALL PROTECTION	40	09OCT08A	10NOV08A																		
14500	REVIEW / APPROVE WALL PROTECTION	8	11NOV08A	10DEC08	218																	
14600	PROCURE / DELIVER WALL PROTECTION	40	11DEC08	12FEB09	218																	
14700	PREPARE / SUBMIT FIRE EXTINGUISHERS / CABINETS	40	09OCT08A	20OCT08A																		
14800	REVIEW / APPROVE FIRE EXTINGUISHERS / CABINETS	8	21OCT08A	24NOV08A																		
14900	PROCURE / DELIVER FIRE EXTINGUISHERS / CABINETS	40	25NOV08A	26JAN09	252																	
15000	PREPARE / SUBMIT METAL LOCKERS	40	09OCT08A	27OCT08A																		
15100	REVIEW / APPROVE METAL LOCKERS	8	28OCT08A	24NOV08A																		
15200	PROCURE / DELIVER METAL LOCKERS	40	25NOV08A	26JAN09	232																	
15300	PREPARE / SUBMIT TURNOUT LOCKERS	40	09OCT08A	27OCT08A																		
15400	REVIEW / APPROVE TURNOUT LOCKERS	8	28OCT08A	24NOV08A																		
15500	PROCURE / DELIVER TURNOUT LOCKERS	40	25NOV08A	26JAN09	235																	

Sheet 4 of 15

501A

09OCT08
27MAR10
09DEC08
10DEC08 23:03

6c1
1-13-09
10

© Primavera Systems, Inc.

ALDEN CONSTRUCTION, INC.
SAUSOLITO PUBLIC SAFETY BUILDINGS
12/09/08 UPDATE
ALL ACTIVITIES

Date	Revision	Checked	Approved

Activity ID	Activity Description	Orig Dur	Early Start	Early Finish	Total Float	2008	2009	2010
19200	PROCURE / DELIVER LOW VOLTAGE LIGHTING CONTROL	40	12DEC08	13FEB09	206			
19300	PREPARE / SUBMIT EMERGENCY GENERATOR	50	09OCT08A	01DEC08A				
19400	REVIEW / APPROVE EMERGENCY GENERATOR	8	02DEC08A	11DEC08	222			
19500	PROCURE / DELIVER EMERGENCY GENERATOR	40	12DEC08	13FEB09	222			
19600	PREPARE / SUBMIT FIRE ALARM	22	09OCT08A	01DEC08A				
19700	REVIEW / APPROVE FIRE ALARM (DEFERRED)	22	02DEC08A	06JAN09	141			
19800	PROCURE / DELIVER FIRE ALARM	40	07JAN09	05MAR09	141			
20200	PREPARE / SUBMIT PAVEMENT MARKINGS	60	09OCT08A	03NOV08A				
20300	REVIEW / APPROVE PAVEMENT MARKINGS	8	04NOV08A	10DEC08	239			
20400	PROCURE / DELIVER PAVEMENT MARKINGS	40	11DEC08	12FEB09	239			
20500	PREPARE / SUBMIT U/G UTILITIES (WATER/SEWER/SD)	30	09OCT08A	21NOV08A				
20600	REVIEW / APPROVE U/G UTILITIES (WATER/SEWER/SD)	8	24NOV08A	10DEC08	79			
20700	PROCURE / DELIVER U/G UTILITIES (WATER/SEWER/SD)	40	11DEC08	12FEB09	79			
20800	PREPARE / SUBMIT EROSION CONTROL PLAN	5	09OCT08A	09DEC08	20			
20900	REVIEW / APPROVE EROSION CONTROL PLAN	8	10DEC08	19DEC08	20			
21000	PREPARE / SUBMIT TRASH ENCLOSURE	22	09OCT08A	01DEC08A				
21100	REVIEW / APPROVE TRASH ENCLOSURE (DEFERRED)	22	02DEC08A	06JAN09	50			
21200	PROCURE / DELIVER TRASH ENCLOSURE	30	07JAN09	19FEB09	50			
21300	PREPARE / SUBMIT SUNSCREENS	22	09OCT08A	22DEC08	196			
21400	REVIEW / APPROVE SUNSCREENS (DEFERRED)	22	23DEC08	28JAN09	196			
21500	PROCURE / DELIVER SUNSCREENS	50	28JAN09	09APR09	196			
GENERAL / SITEWORK								
31200	MOBILIZATION	10	09OCT08A	22OCT08A				
31300	IMPLEMENT EROSION CONTROL	1	09OCT08A	09OCT08A				
31350	ID/DISCUSS ADDED UG ELECT WK FOR HIGH VOLT LINES	1	23OCT08A	27OCT08A				
31360	OWNER DIRECTION TO PERFORM U/G ELECT WORK	1	28OCT08A	10NOV08A				
31370	REPUBLIC PROVIDE PRICING FOR UG ELECT WORK	1	11NOV08A	17NOV08A				
31380	LESLIE PROVIDE PRICING FOR ABOVE GR. ELECT WK	1	11NOV08A	21NOV08A				
31390	SCHEDULE REPUBLIC TO START WORK	8	24NOV08A	05DEC08A				
31395	REPUBLIC (CITY SUB) RESCHEDULE ITS WORK	10	08DEC08A	22DEC08	11			
31400	REMOVE / STORE (E) STREET LIGHT	1	23DEC08	23DEC08	11			
31500	DEMO (E) SIDEWALK	10	10OCT08A	23OCT08A				
31600	END OF 2008-2009 WINTER SEASON - RESUME SITEWORK	0		30MAR09*	42			
31700	DEMO (E) CURBS	5	31MAR09	06APR09	42			
31800	TRENCH / UTILITIES ACROSS JOHNSON & CALEDONIA	10	07APR09	20APR09	42			

2008 2009 2010

O N D J F M A M J J A S O N D J F M A

MOBILIZATION

IMPLEMENT EROSION CONTROL

ID/DISCUSS ADDED UG ELECT WK FOR HIGH VOLT LINES

OWNER DIRECTION TO PERFORM U/G ELECT WORK

REPUBLIC PROVIDE PRICING FOR UG ELECT WORK

LESLIE PROVIDE PRICING FOR ABOVE GR. ELECT WK

SCHEDULE REPUBLIC TO START WORK

REPUBLIC (CITY SUB) RESCHEDULE ITS WORK

REMOVE / STORE (E) STREET LIGHT

DEMO (E) SIDEWALK

END OF 2008-2009 WINTER SEASON - RESUME SITEWORK

DEMO (E) CURBS

TRENCH / UTILITIES ACROSS JOHNSON & CALEDONIA

Date	Revision	Checked	Approved

ALTEN CONSTRUCTION, INC.

SAUSOLITO PUBLIC SAFETY BUILDINGS

12/09/08 UPDATE

ALL ACTIVITIES

Start Date: 09OCT08

Finish Date: 27MAR10

Data Date: 09DEC08

Run Date: 10DEC08 23:04

S01A

Legend:
 Early Bar
 Progress Bar
 Critical Activity

601

1-13-09

12

© Primavera Systems, Inc.

Activity ID	Activity Description	Orig Dur	Early Start	Early Finish	Total Float	2008	2009	2010
45800	EDGE FORM ROOF	7	03SEP09	14SEP09	0			
45900	INSTALL REBAR ROOF	7	03SEP09	14SEP09	0			
46000	PLACE ROOF CONCRETE	1	15SEP09	15SEP09	0			
46100	STRIP EDGE FORM ROOF	2	16SEP09	17SEP09	0			
POLICE STATION EXTERIOR								
51200	EXTERIOR FRAMING LEVEL 1	12	09SEP09	24SEP09	8			
51300	EXTERIOR FRAMING LEVEL 2	12	18SEP09	05OCT09	3			
51400	SCAFFOLD FIRE STATION	5	09SEP09	15SEP09	13			
51500	EXTERIOR SHEATHING LEVEL 1	5	23SEP09	29SEP09	8			
51550	INSTALL FLASHINGS LEVEL 1	4	28SEP09	01OCT09	8			
51600	EXTERIOR SHEATHING LEVEL 2	5	02OCT09	08OCT09	3			
51700	INSTALL FLASHINGS LEVEL 2	4	07OCT09	12OCT09	3			
51800	INSTALL STOREFRONTS / WINDOWS LEVEL 1	10	02OCT09	15OCT09	10			
51900	INSTALL ROLL-UP DOORS LEVEL 1	6	30SEP09	07OCT09	16			
52000	INSTALL STOREFRONTS / WINDOWS LEVEL 2	10	13OCT09	26OCT09	3			
52100	LATH / PAPER EXTERIOR	12	02OCT09	22OCT09	8			
52200	SCRATCH / BROWN STUCCO	15	12OCT09	30OCT09	8			
52300	CURE SCRATCH / BROWN STUCCO	5	02NOV09	06NOV09	8			
52500	WATERPROOFING AT BRICK VENEER LOCATIONS	10	09NOV09	20NOV09	8			
52600	INSTALL CAST STONE	15	16NOV09	08DEC09	8			
52700	INSTALL BRICK VENEER	20	23NOV09	22DEC09	8			
53000	REMOVE SCAFFOLDING	5	23DEC09	30DEC09	8			
53100	INSTALL EXTERIOR CANOPIES	5	31DEC09	07JAN10	13			
53200	INSTALL CAST METAL SIGNAGE	2	31DEC09	04JAN10	16			
53250	INSTALL HANDRAILS	3	23DEC09	28DEC09	20			
53300	INSTALL RIGID ROOF INSULATION	7	09OCT09	19OCT09	3			
53400	INSTALL ROOFING / FLASHING	5	20OCT09	26OCT09	3			
53500	BUILDING DRIED-IN	0		26OCT09	3			
53600	INSTALL ROOFTOP EQUIPMENT / PIPING	4	27OCT09	30OCT09	44			
53650	INSTALL ROOF SCREENS	5	02NOV09	06NOV09	53			
53670	INSTALL UNIT SKYLIGHTS	4	27OCT09	30OCT09	58			
53700	INSTALL PATIO HARDWOOD DECKING AT ROOFS	3	31DEC09	05JAN10	15			
POLICE STATION INTERIOR								
61200	LAYOUT / INSTALL HANGERS LEVEL 1	3	09SEP09	11SEP09	2			
61300	INSTALL SPRINKLER ROUGH-IN LEVEL 1	5	14SEP09	18SEP09	2			
61400	LAYOUT / INSTALL HANGERS LEVEL 2	3	18SEP09	22SEP09	0			

Sheet 9 of 15

Start Date: 09OCT08
 Finish Date: 27MAR10
 Data Date: 09DEC08
 Run Date: 10DEC08 23:04

601
1-13-09
15

ALLEN CONSTRUCTION, INC.

SAUSOLITO PUBLIC SAFETY BUILDINGS
12/09/08 UPDATE
ALL ACTIVITIES

Legend: Early Bar
 Progress Bar
 Critical Activity

Date	Revision	Checked	Approved

© Primavera Systems, Inc.

Activity ID	Activity Description	Orig Dur	Early Start	Early Finish	Total Float	2008	2009	2010
61500	INSTALL SPRINKLER ROUGH-IN LEVEL 2	5	23SEP09	29SEP09	0	0	0	0
61600	INSTALL MEP MAINS LEVEL 1	5	21SEP09	25SEP09	2	0	0	0
61700	INSTALL MEP MAINS LEVEL 2	5	30SEP09	06OCT09	0	0	0	0
61800	INTERIOR FRAMING / DOOR FRAMES LEVEL 1	12	28SEP09	13OCT09	2	0	0	0
62000	INTERIOR FRAMING / DOOR FRAMES LEVEL 2	10	07OCT09	20OCT09	0	0	0	0
62100	IN-WALL MEP ROUGH-IN LEVEL 1	15	07OCT09	27OCT09	2	0	0	0
62200	IN-WALL MEP ROUGH-IN LEVEL 2	15	14OCT09	03NOV09	0	0	0	0
62300	INSULATION LEVEL 1	2	28OCT09	29OCT09	2	0	0	0
62400	INSULATION LEVEL 2	2	04NOV09	05NOV09	0	0	0	0
62500	INTERIOR DRYWALL / TAPE / FINISH LEVEL 1	15	30OCT09	19NOV09	2	0	0	0
62550	INSTALL BULLET RESISTIVE CONSTRUCTION	5	04NOV09	10NOV09	9	0	0	0
62600	INTERIOR DRYWALL / TAPE / FINISH LEVEL 2	13	06NOV09	24NOV09	0	0	0	0
62700	PAINT LEVEL 1	5	20NOV09	30NOV09	2	0	0	0
62800	PAINT LEVEL 2	5	25NOV09	03DEC09	0	0	0	0
62900	INSTALL CEILING GRID LEVEL 1	8	01DEC09	10DEC09	2	0	0	0
63000	INSTALL CEILING GRID LEVEL 2	8	04DEC09	15DEC09	0	0	0	0
63100	INSTALL MEP AT ACOUSTICAL CEILINGS /TRIM LEVEL 1	8	03DEC09	15DEC09	2	0	0	0
63200	INSTALL MEP AT ACOUSTICAL CEILINGS /TRIM LEVEL 2	8	08DEC09	18DEC09	0	0	0	0
63300	INSTALL CEILING TILE LEVEL 1	3	16DEC09	18DEC09	2	0	0	0
63400	INSTALL CEILING TILE LEVEL 2	3	21DEC09	23DEC09	0	0	0	0
63500	INSTALL WAINSCOT PANELING LEVEL 2	3	24DEC09	29DEC09	1	0	0	0
63600	INSTALL CERAMIC TILE WALLS / FLOOR LEVEL 1	4	01DEC09	04DEC09	27	0	0	0
63700	INSTALL CERAMIC TILE WALLS / FLOOR LEVEL 2	12	04DEC09	21DEC09	16	0	0	0
63800	INSTALL PLUMBING FIXTURES LEVEL 1	4	07DEC09	10DEC09	27	0	0	0
63900	INSTALL PLUMBING FIXTURES LEVEL 2	6	22DEC09	30DEC09	16	0	0	0
64000	INSTALL TOILET PARTITIONS / ACCESSORIES LEVEL 1	2	11DEC09	14DEC09	27	0	0	0
64100	INSTALL TOILET PARTITIONS / ACCESSORIES LEVEL 2	2	31DEC09	04JAN10	16	0	0	0
64300	INSTALL LOCKERS LEVEL 2	2	04DEC09	07DEC09	16	0	0	0
64400	INSTALL CASEWORK LEVEL 1	5	21DEC09	28DEC09	2	0	0	0
64500	INSTALL CASEWORK LEVEL 2	3	24DEC09	29DEC09	0	0	0	0
64600	INSTALL KITCHEN EQPT LEVEL 2	1	30DEC09	30DEC09	0	0	0	0
64700	INSTALL DECORATIVE WALL PANELING LEVEL 1	3	04DEC09	08DEC09	5	0	0	0
64800	INSTALL DECORATIVE METAL RAILING SYSTEM	5	09DEC09	15DEC09	5	0	0	0
64900	INSTALL FRP LEVEL 1	1	01DEC09	01DEC09	15	0	0	0
64950	INSTALL FRP LEVEL 2	1	04DEC09	04DEC09	17	0	0	0

ALDEN CONSTRUCTION, INC.
SAUSOLITO PUBLIC SAFETY BUILDINGS
12/09/08 UPDATE
ALL ACTIVITIES

Start Date: 09OCT08
Finish Date: 27MAR10
Data Date: 09DEC08
Run Date: 10DEC08 23:04

601
1-13-09
16

© Primavera Systems, Inc.

Date	Revision	Checked	Approved

Activity ID	Activity Description	Orig Dur	Early Start	Early Finish	Total Float	2008	2009	2010
72050	DRILL / INSTALL ELEVATOR RAM	4	27FEB09	04MAR09	19			
72100	FORM / REBAR / PLACE ELEVATOR PIT SLAB / WALLS	10	05MAR09	18MAR09	41			
72150	SET COLUMNS / BEAMS AT GL 3, 4, 8, 9	10	27FEB09	12MAR09	13			
72200	FORM 1 SIDE WALLS	20	13MAR09	09APR09	13			
72300	REBAR WALLS	20	20MAR09	16APR09	13			
72350	INSTALL TEMPLATES / EMBEDS	4	13APR09	16APR09	13			
72400	SCOTCRETE WALLS	5	17APR09	23APR09	13			
72450	STRIP WALLS	2	24APR09	27APR09	13			
72500	INSTALL CMU WALLS (INCL. TRASH ENCLOSURE)	15	05MAR09	25MAR09	36			
72600	INSTALL UNDERGROUND PLUMBING	10	27FEB09	12MAR09	35			
72700	INSTALL UNDERSLAB ELECTRICAL	15	06MAR09	26MAR09	35			
72750	COMPLETE IN-SLAB MEP	3	28APR09	30APR09	15			
72800	ROCK / SAND / VAPOR BARRIER	5	28APR09	04MAY09	13			
72850	FORM SLAB ON GRADE	8	05MAY09	14MAY09	13			
72900	REBAR SLAB ON GRADE	5	11MAY09	15MAY09	13			
73000	SET SCREEDS	5	14MAY09	20MAY09	13			
73100	INSTALL EMBEDS / ANCHOR BOLTS	3	18MAY09	20MAY09	13			
73200	PLACE SLAB ON GRADE	1	21MAY09	21MAY09	13			
73300	ERECT STEEL FIRE STATION / STAIRS / LAY PAN DECK	30	22MAY09	06JUL09	13			
73400	WELD DECKING FIRE STATION	10	29JUN09	13JUL09	13			
73500	EDGE FORM LEVEL 2	7	14JUL09	22JUL09	13			
73600	INSTALL REBAR LEVEL 2	7	14JUL09	22JUL09	13			
73700	PLACE LEVEL 2 CONCRETE	1	23JUL09	23JUL09	13			
73800	STRIP EDGE FORM LEVEL 2	2	24JUL09	27JUL09	13			
74000	EDGE FORM ROOF	7	23JUL09	31JUL09	25			
74100	INSTALL REBAR ROOF	7	23JUL09	31JUL09	25			
74200	PLACE ROOF CONCRETE	1	03AUG09	03AUG09	25			
74300	STRIP EDGE FORM ROOF	2	04AUG09	05AUG09	25			
FIRE STATION EXTERIOR								
81200	EXTERIOR FRAMING LEVEL 1	15	28JUL09	17AUG09	15			
81300	EXTERIOR FRAMING LEVEL 2	15	06AUG09	26AUG09	25			
81400	SCAFFOLD FIRE STATION	5	28JUL09	03AUG09	20			
81500	EXTERIOR SHEATHING LEVEL 1	7	11AUG09	19AUG09	15			
81600	EXTERIOR SHEATHING LEVEL 2	7	20AUG09	28AUG09	25			
81640	INSTALL FLASHINGS LEVEL 2	4	27AUG09	01SEP09	25			

Start Date: 09OCT08
 Finish Date: 27MAR10
 Data Date: 09DEC08
 Run Date: 10DEC08 23:04

6c1
1-13-09
18

Sheet 12 of 15

ALLEN CONSTRUCTION, INC.
 SAUSOLITO PUBLIC SAFETY BUILDINGS
 12/09/08 UPDATE
 ALL ACTIVITIES

Date	Revision	Checked	Approved

© Primavera Systems, Inc.

Activity ID	Activity Description	Orig Dur	Early Start	Early Finish	Total Float	2008	2009	2010
81660	INSTALL STOREFRONTS LEVEL 1	12	20AUG09	04SEP09	34			
81670	INSTALL ROLL-UP DOORS LEVEL 1	6	20AUG09	27AUG09	40			
81680	INSTALL STOREFRONTS / WINDOWS LEVEL 2	12	02SEP09	18SEP09	25			
81700	LATH / PAPER EXTERIOR	17	20AUG09	14SEP09	15			
81800	SCRATCH / BROWN STUCCO	15	03SEP09	24SEP09	15			
81900	CURE SCRATCH / BROWN STUCCO	5	25SEP09	01OCT09	15			
82000	FINISH COAT STUCCO	10	02OCT09	15OCT09	64			
82100	WATERPROOFING AT BRICK VENEER LOCATIONS	10	02OCT09	15OCT09	15			
82200	INSTALL CAST STONE	15	09OCT09	29OCT09	15			
82300	INSTALL BRICK VENEER	25	16OCT09	19NOV09	15			
82400	INSTALL PREFAB METAL CORNICE	10	20NOV09	07DEC09	15			
82500	INSTALL CAST STONE COLUMN CAPITAL	4	08DEC09	11DEC09	15			
82600	REMOVE SCAFFOLDING	5	14DEC09	18DEC09	15			
82700	INSTALL EXTERIOR CANOPIES	5	21DEC09	28DEC09	20			
82800	INSTALL CAST METAL SIGNAGE	2	21DEC09	22DEC09	23			
82900	INSTALL RIGID ROOF INSULATION	7	31AUG09	09SEP09	27			
83000	INSTALL ROOFING / FLASHING	5	10SEP09	16SEP09	27			
83100	BUILDING DRIED-IN	0		18SEP09	25			
83200	INSTALL ROOFTOP EQUIPMENT / PIPING	4	02NOV09	05NOV09	44			
83250	INSTALL ROOF SCREENS	5	06NOV09	12NOV09	49			
83270	INSTALL TUBULAR SKYLIGHTS	4	17SEP09	22SEP09	86			
83300	INSTALL PATIO HARDWOOD DECKING AT ROOFS	3	09DEC09	11DEC09	30			
FIRE STATION INTERIOR								
91100	LAYOUT / INSTALL HANGERS LEVEL 1	3	28JUL09	30JUL09	13			
91200	INSTALL SPRINKLER ROUGH-IN LEVEL 1	5	31JUL09	06AUG09	13			
91250	LAYOUT / INSTALL HANGERS LEVEL 2	3	31JUL09	04AUG09	15			
91300	INSTALL SPRINKLER ROUGH-IN LEVEL 2	5	07AUG09	13AUG09	13			
91400	INSTALL MEP MAINS LEVEL 1	5	07AUG09	13AUG09	40			
91500	INSTALL MEP MAINS LEVEL 2	5	14AUG09	20AUG09	13			
91600	INT. FRAMING / DOOR FRAMES LEVEL 1 & MEZZANINE	8	14AUG09	25AUG09	40			
91650	FLOOR SHEATHING AT MEZZANINE	2	28AUG09	27AUG09	50			
91700	INTERIOR FRAMING / DOOR FRAMES LEVEL 2	15	21AUG09	11SEP09	13			
91800	IN-WALL MEP ROUGH-IN LEVEL 1 & MEZZANINE	15	19AUG09	09SEP09	40			
91900	IN-WALL MEP ROUGH-IN LEVEL 2	20	04SEP09	02OCT09	13			
91920	INSULATION LEVEL 1 & MEZZANINE	2	21SEP09	22SEP09	33			

Start Date	09OCT08	Sheet 13 of 15
Finish Date	27MAR10	Date
Data Date	09DEC08	Revision
Run Date	10DEC08 23:04	Checked
		Approved

ALLEN CONSTRUCTION, INC.

SAUSOLITO PUBLIC SAFETY BUILDINGS
12/09/08 UPDATE
ALL ACTIVITIES

S01A

Early Bar
Progress Bar
Critical Activity

1-13-09
601
19

© Primavera systems, Inc.



City of Sausalito Public Safety Facilities
Police Station 29 Caledonia Street
Fire Station 333 Johnson Street
Sausalito, CA

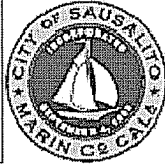
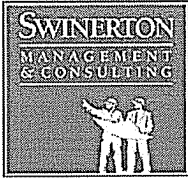
5. PROJECT NEW CONSTRUCTION BUDGET

Original Contract Sum:	\$9,266,000.00
Net Change by Change Order:	\$-0-
Contract Sum to Date:	\$9,266,000.00
Total Completed and Stored to Date:	\$680,029.49
Less Previous Certificates of Payment:	\$-0-
Balance to Finish:	\$8,585,970.51
Project Percentage Complete:	7%

As of January 1st, 2009, no Change Orders have been approved and are not represented above, however, Change orders will be issued to cover the costs of the Tank Removal, changes to the Temporary Shoring at the Police Department site, and temporary removal of streetlights at the site. Once the Change Order Requests are issued by Alten, Swinerton Management & Consulting will review and provide recommendations to the City.

Alten Construction submitted their first draft Pay Application on December 29th, 2008.

601
1-13-09
22



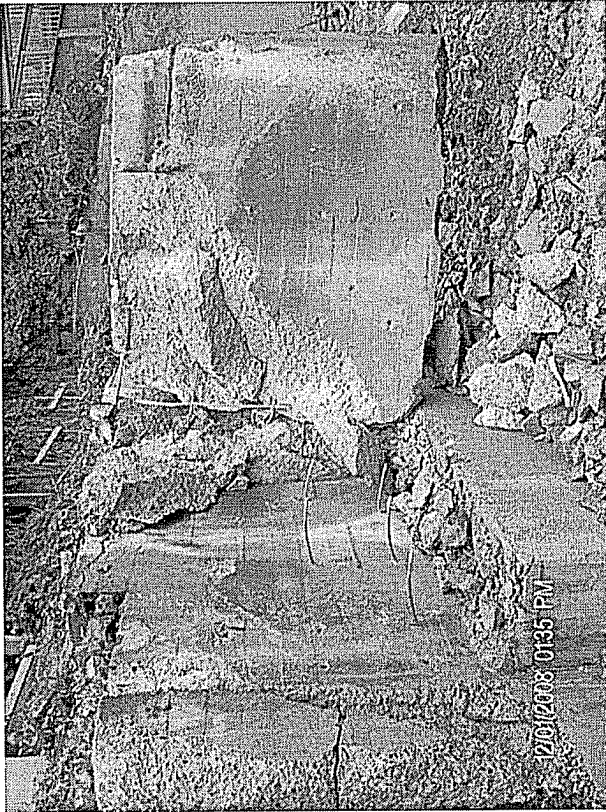
City of Sausalito Public Safety Facilities
Police Station 29 Caledonia Street
Fire Station 333 Johnson Street
Sausalito, CA

6. PROJECT PROGRESS PHOTOS

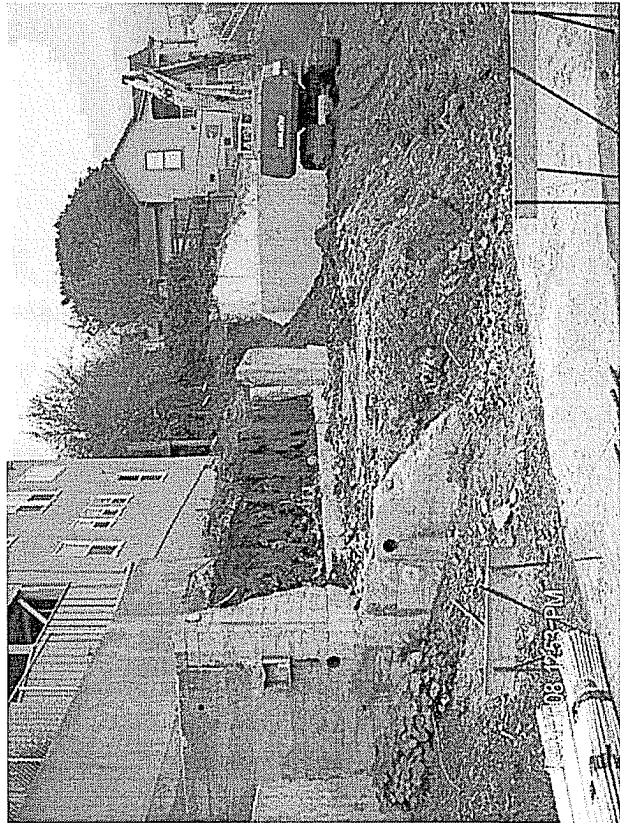
lcl
1-13-09
23



Views of demolition of existing retaining walls at Police Station site.

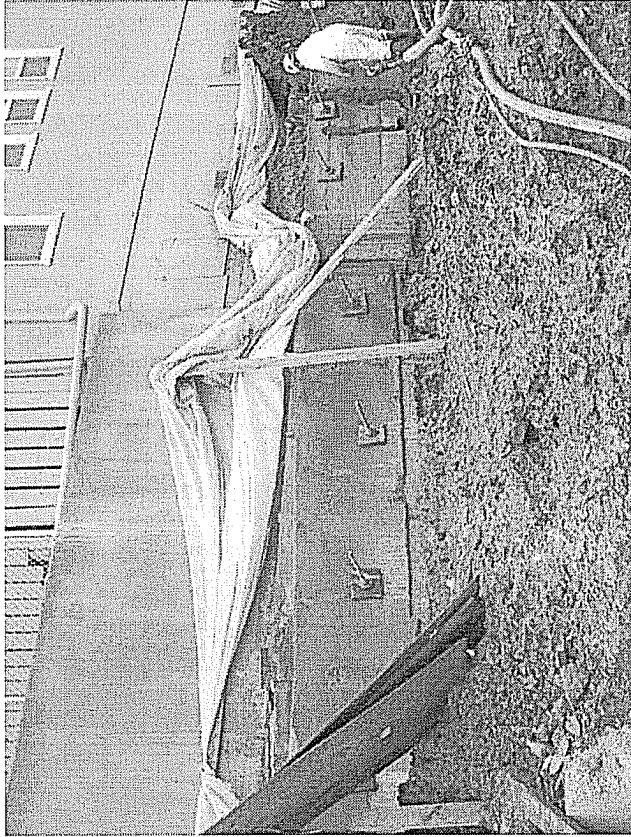


601
1-13-09
24

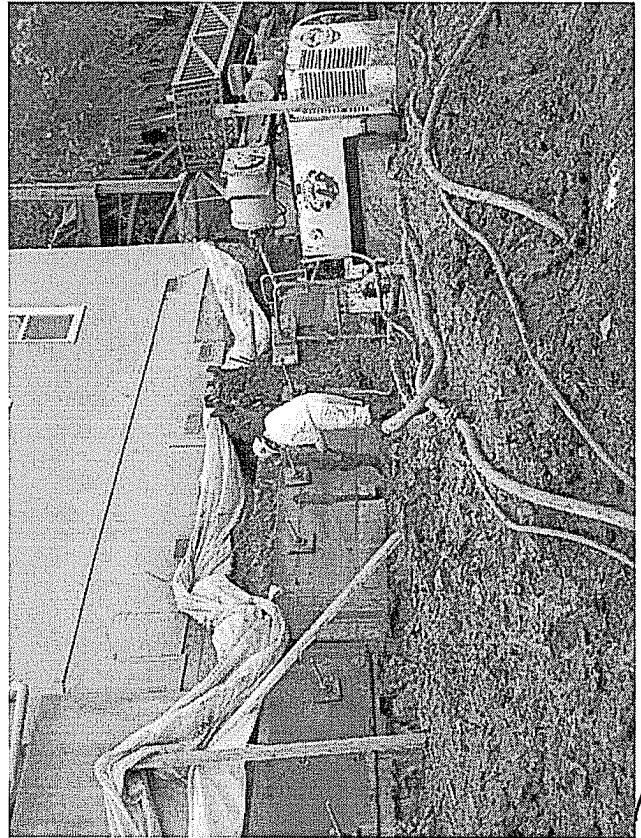
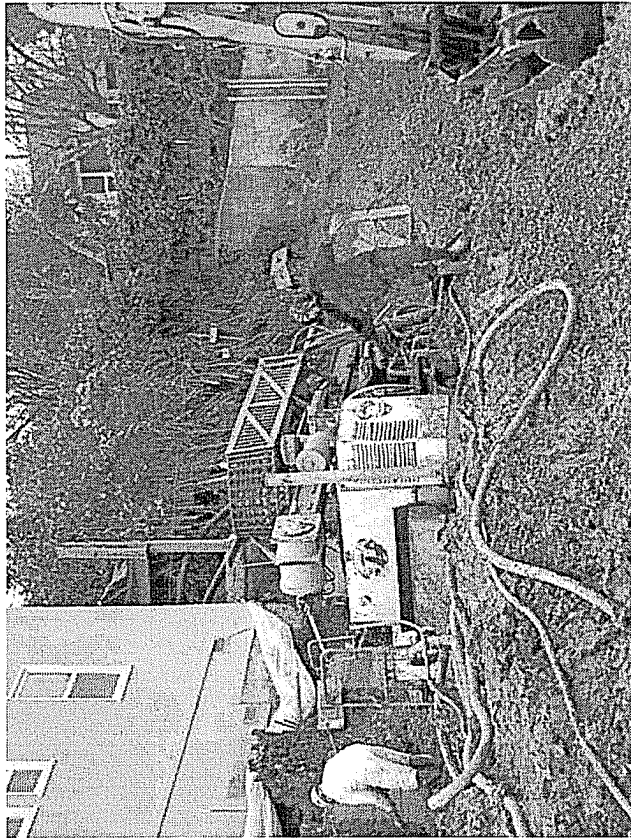


Additional views of existing retaining wall after first phase of demolition at Police Department Site.

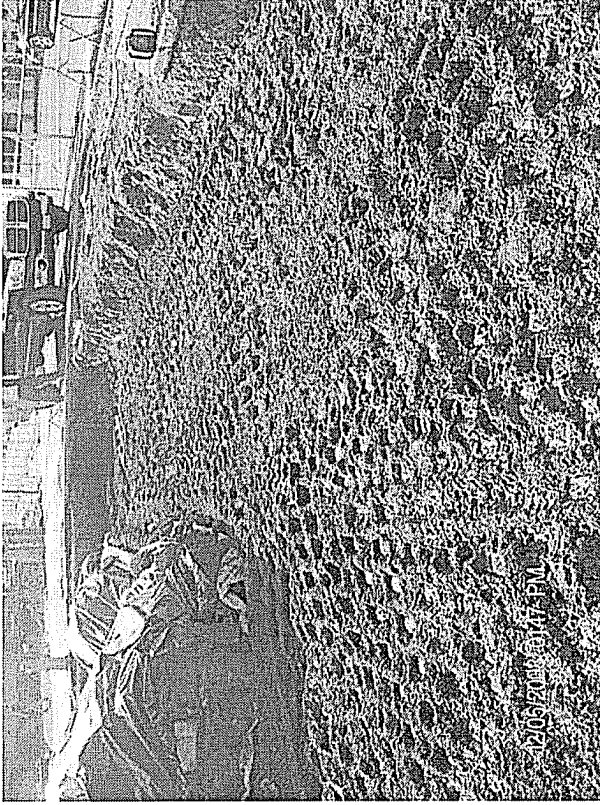
6c1
1-13-09
25



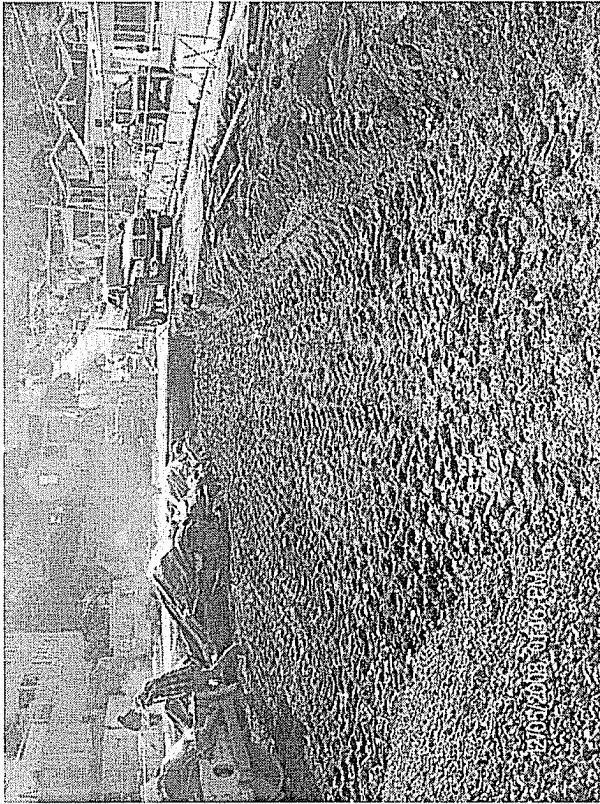
Views of first line of tie-backs for temporary shoring at Police Department Site.



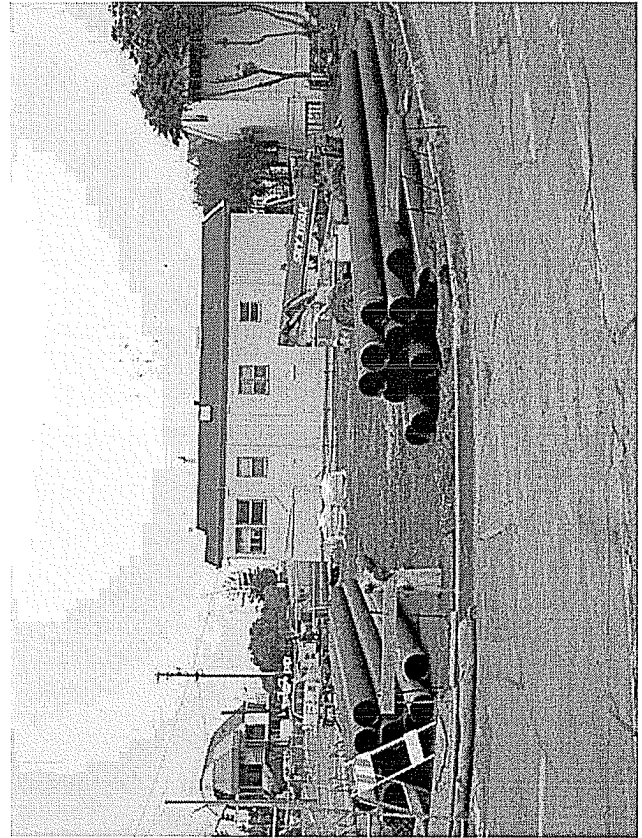
601
1-13-09
26



Location of removed tanks after clean fill placed, above, and picture of soil (under tarp) that was off-hauled.



loc 1
1-13-09
21



View of Fire Department Site
after removal of soil and
tanks, above left, and
delivery of Tubex Piles to
site, above and left.

601
1-13-09
28



Sausalito Public Safety Facilities Budget

January 6th, 2009

Sausalito PSF

Hard Construction Costs		
Demolition	\$291,000	Peak Engineering (completed)
New Construction	\$9,266,000	Alten Construction
Potential Add Alternates	\$66,380	None accepted at this time
Sub-total hard Construction Costs	\$9,623,380	
Contingency (10%)	\$962,338	Recommended
Construction Risk Prevention: Retaining Wall	\$105,920	
Total Hard Construction Costs	\$10,691,638	
Soft Construction Costs		
Sub-total of Professional Fees	\$2,489,022	Various Vendors, See Prev. worksheet
Sub-total Permits and Fees	\$450,417	Permits and PGE
Total Soft Construction Fees	\$2,939,438	
Soft Cost Contingency (7%)	\$205,761	Recommended
Additional Soft Costs	\$314,858	
Sub-Total Soft Costs	\$3,460,056	
TOTAL CONSTRUCTION BUDGET	\$14,151,694	

NOTE:

Budget above does not include the following items:

- Land / property sales
- Revenue capitalization (i.e. rental income)
- Moving / transition
- Administrative
- Furniture, Fixtures or Equipment

GC
1-13-09
29
Page 1



Sausalito Public Safety Facilities

January 6, 2009

Construction Phase --DETAIL

Construction Costs:

Construction (building & sitework)		(As of December 4th, 2008)	\$9,623,380
	Demo		\$291,000
	New Construction	\$	9,266,000
	Add Alternate 1	\$	24,380.00
	Add Alternate 2	\$	(8,000.00)
	Add Alternate 3	\$	50,000.00
♦	Allowance for (e) retaining wall work		0
♦	Owner's Construction Contingency	10.0%	962,338
Subtotal construction costs			10,585,718

Per Contracts with:
 Peak Engineering, includes \$15K alternate
 Alten Construction
 Alten Construction, not yet authorized
 Alten Construction, not yet authorized
 Alten Construction, not yet authorized
 (not required, completed)
 Recommendation for new construction

FF&E Costs

♦	Furniture	0	\$0 per SF
♦	Equipment (police/fire/data/telecom/security)	0	\$0 per SF

Construction Risk Prevention:

	Retaining Wall	105,920
--	----------------	---------

Total Hard Costs \$10,691,638

Professional Fees:

♦	Architecture / Engineering (BSA) (Cancelled)	211,760	
♦	BSA expenses		
♦	Glass Architects (agreement)		
	SD	59,250	
	DD	291,390	
	Demo Docs	35,000	
	CD	437,085	
	Bidding	19,426	
	CA	223,399	
	LEED Design	129,100	
	Furniture Design	25,000	
	Reimbursable	35,000	
	Reimbursable amendment	25,000	Amendment #5 - Under Review
	AEC	10,500	
	Total Glass (&AEC) Agreement		\$1,290,150
♦	Project/Construction Management (SMC)	608,065	
♦	Communications (Data/Telecom/Security)	30,000	allowance
♦	Hazardous Materials testing (GPI)	4,335	(first and added tests)
♦	Geotechnical/soils testing (CEL)	7,800	completed
♦	Assist in CEQA report (CEL)	1,600	completed
♦	Document stone wall & adj. Buildings (CEL)	20,000	(existing conditions plus monitoring)
♦	Topo & record boundary survey (BKF)	15,000	completed
♦	Boundary Survey & Lot Line adjustment (BKF)	17,600	completed
♦	Locate & certify story poles (BKF)	7,700	(both installations)
♦	Install story poles (Swinerton) Swinerton	20,150	(both installations)
			(locate, observe at start & end of
♦	Locate monuments for existing stone wall (BKF)	14,000	construction)
♦	Remove story poles Swinerton	2,416	completed
	Ganyer - survey test pits	1,800	completed
	Live Oak install, certify & remove story poles for P.S.	11,498	completed
♦	Initial Study/Migated Negative Declaration (PMC)	54,696	(previously excluded)
♦	Construction testing / inspections		Prof Serv Agreements

60
1-13-09
30



Sausalito Public Safety Facilities

January 6, 2009

Construction Phase --DETAIL

Smith Emery	59,607	Executed
CEL/Geosphere	32,866	Executed
Underground Tank Discovered and Removed	50,000	CES and AEW, approximate, from Contingency?
Archaeology (Holman & Assoc)	2,875	May exceed this amount
Hazmat Consulting (Monte Deignan)	3,134	Original Agreement
Hazmat Consulting (Monte Deignan)	1,970	Add Serv for Addtl Testing
♦ Design fee for corrective work to exist. stone wall	10,000	allowance
♦ Soil engineering for corrective work to exist. stone wall	10,000	allowance

Subtotal professional fees **\$2,489,022**

Permits and Fees:

♦ Permit allowance	158,000	Approx per fees paid
♦ Utility fees (MWD, PG&E)	1.0%	96,234 estimate
PGE		51,832 If we go for 2nd plan, \$27K
♦ Insurance (Builder's Risk)	1.5%	144,351 estimate

Subtotal Permits and Fees **\$450,417**

♦ **Soft Cost Contingency** **7.0%** **\$205,761** recommendation

Additional Soft Costs

Bond Overhead Costs	97,858
Cost of Issuance	99,500
Bond Accounting Services	100,000
Quint & Thinning LLP	17,500
	\$314,858

Total Soft Costs **\$3,460,056**

TOTAL CONSTRUCTION BUDGET **\$14,151,694**

NOTE: ITEMS, EXCLUDED FROM ABOVE

Land / property sales	Moving / transition
Revenue capitalization (i.e. rental income)	Administrative
Furniture, Fixtures or Equipment	

= Amount carried forward to Summary Schedule

60
1-13-09
30