

**SHEET INDEX**

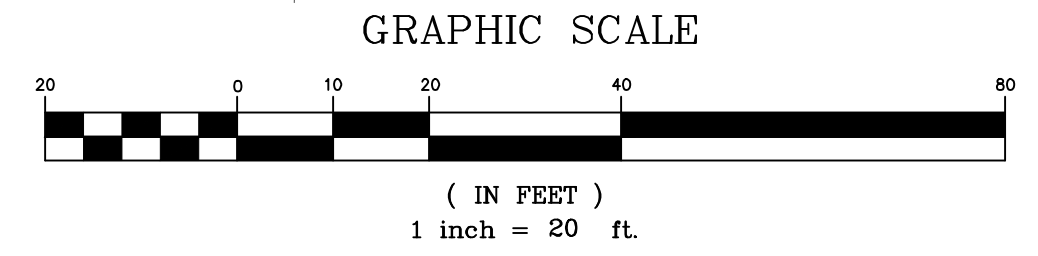
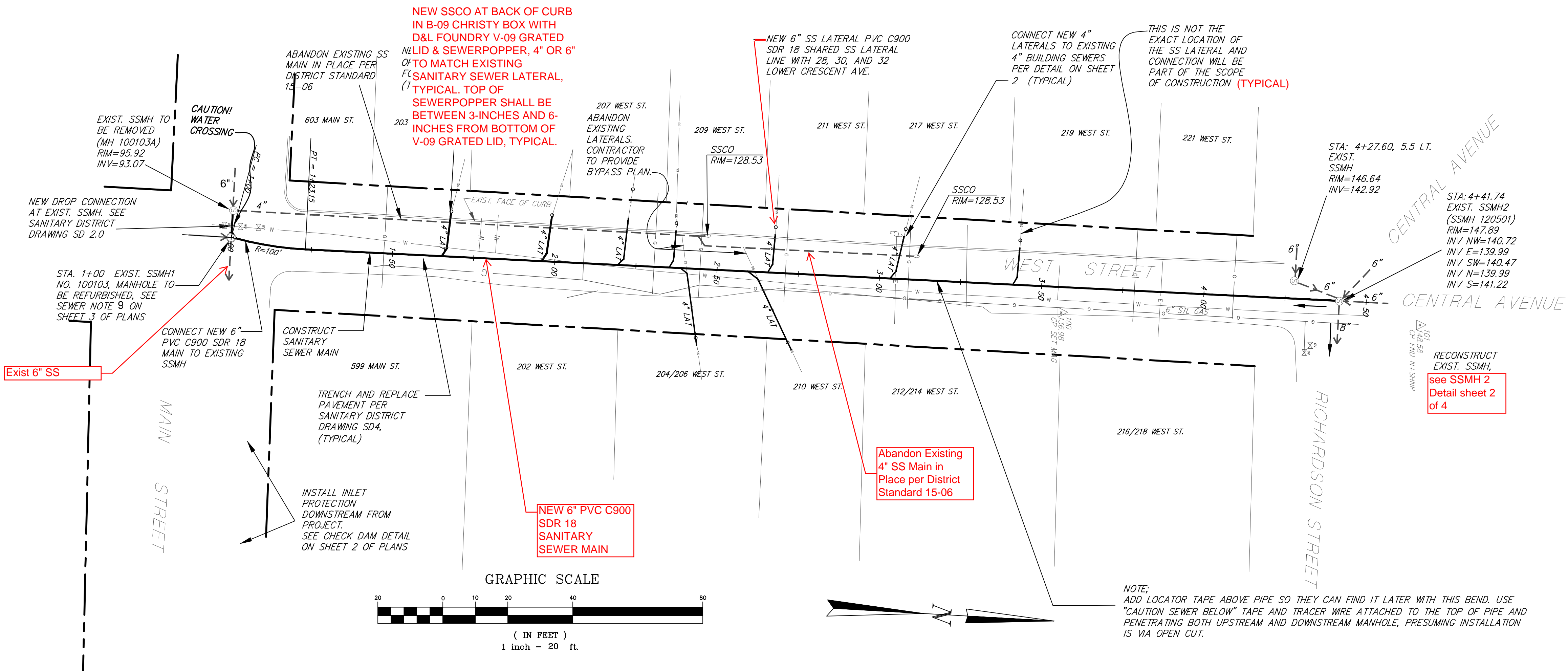
SHEET 1	SANITARY SEWER MAIN REPLACEMENT PLAN
SHEET 2	NOTES AND DETAILS
SHEET 3	NOTES AND DETAILS
SHEET 4	BEST MANAGEMENT PRACTICES

**LEGEND**

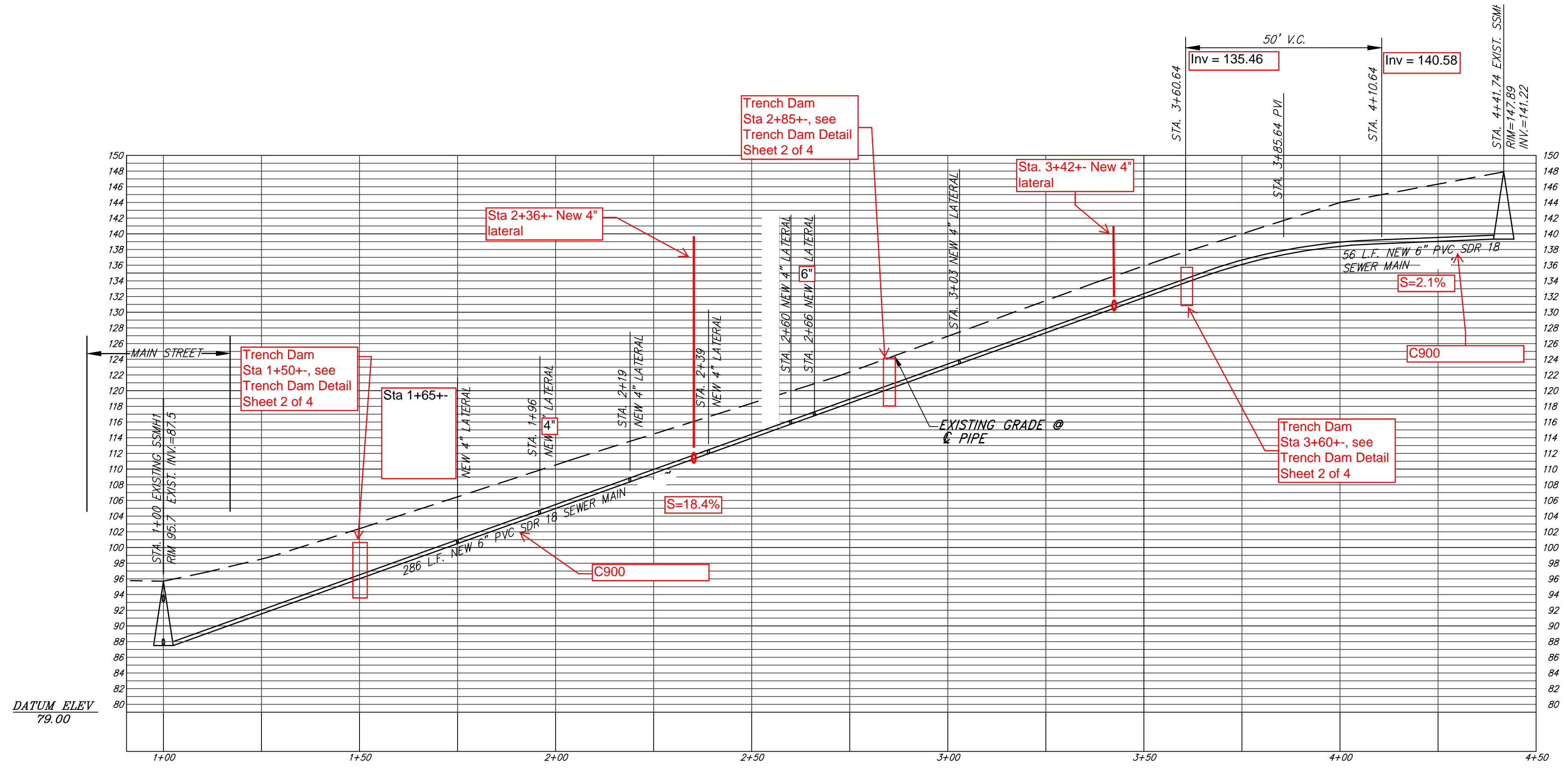
	RANDOM CONTROL FOR SURVEY
	EXISTING FIRE HYDRANT
	EXISTING GUY ANCHOR
	EXISTING JOINT POLE
	SANITARY SEWER MANHOLE
	ASPHALT CONCRETE
	EXISTING STREET/TRAFFIC SIGN
	EXISTING WATER METER
	EXISTING GAS VALVE
	EXISTING WATER VALVE
	EXISTING TREE
	EXISTING CONTOURS
	PROPERTY LINE
	EXISTING EDGE OF PAVEMENT
	PROPOSED SANITARY SEWER MAIN
	EXISTING SANITARY SEWER MAIN
	EXISTING WATER LINE

**SURVEY NOTES**

1. VERTICAL DATUM IS ASSUMED.
2. HORIZONTAL DATUM AND TOPOGRAPHY IS BASED UPON SITE VISIT AND RECORD DATA.



NOTE:  
ADD LOCATOR TAPE ABOVE PIPE SO THEY CAN FIND IT LATER WITH THIS BEND. USE "CAUTION SEWER BELOW" TAPE AND TRACER WIRE ATTACHED TO THE TOP OF PIPE AND PENETRATING BOTH UPSTREAM AND DOWNSTREAM MANHOLE, PRESUMING INSTALLATION IS VIA OPEN CUT.



**PROFILE**  
1"=20' HORIZ.  
1"=10' VERT.

A.P.N.: 000-000-000  
FIELD BOOK NO.: ##

Arthur J. Smith, C.E.  
R.C.E. 67386

**ILS ASSOCIATES, INC.**  
CIVIL ENGINEERING AND LAND SURVEYING  
79 GALLI DRIVE, SUITE A NOVATO, CA 94949-5717 (415)883-9200 FAX (415)883-2763

**200 BLOCK OF WEST STREET**  
SAUSALITO  
MARIN COUNTY CALIFORNIA

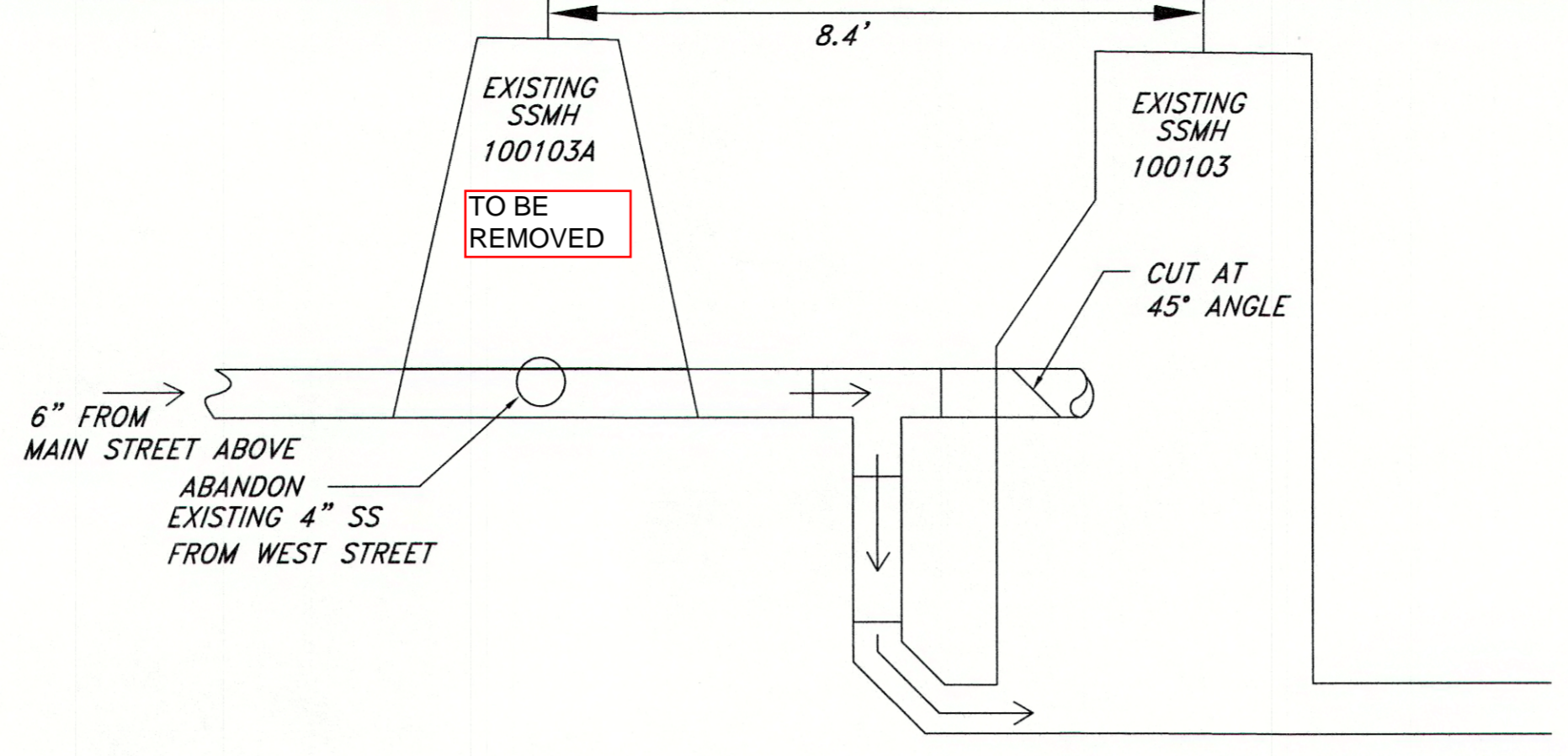
**SANITARY SEWER MAIN REPLACEMENT PLAN**

DATE: 07-05-2022  
JOB NO.: 9293  
SHEET NO.: 1 OF 4

X-REFS: I:\CS-PROJECTS\11\127\_12084-CIVIL\Source\WestStreet\12084\_S558.dwg Time: Dec 15, 2022 - 07:48am Logon: rmond Dimascale: 20

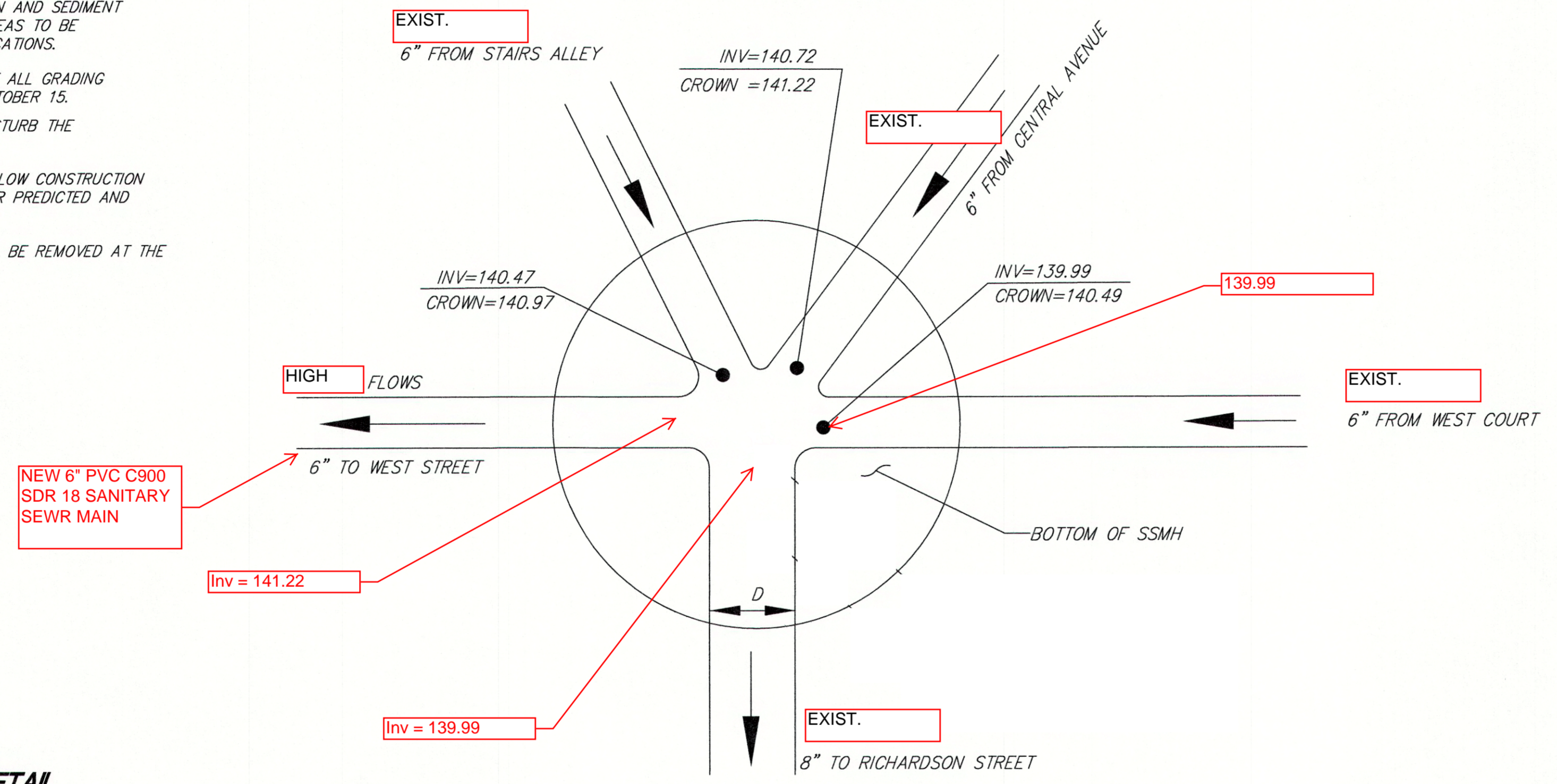
**EROSION AND SEDIMENT CONTROL NOTES:**

1. THE LOCATION OF ALL EROSION AND SEDIMENT CONTROL FEATURES SHOWN ON THESE PLANS ARE APPROXIMATE ONLY. ACTUAL LOCATIONS ARE TO BE DETERMINED IN THE FIELD BY THE ENGINEER.
2. TEMPORARY CONSTRUCTION FENCE, IF SHOWN, SHALL BE INSTALLED PRIOR TO ANY SITE CLEARING, DEMOLITION OR GRADING.
3. BETWEEN OCTOBER 15 AND MAY 1, EROSION CONTROL FEATURES SHALL BE MAINTAINED ON A DAILY BASIS.
4. WHERE DEEMED NECESSARY BY THE ENGINEER IN THE FIELD OTHER EROSION AND SEDIMENT CONTROL MEASURES MAY BE REQUIRED.
5. CONSTRUCTION FENCES, FIBER ROLLS, SILT FENCES, ETC. MAY BE TEMPORARILY REMOVED TO GAIN ACCESS TO CONSTRUCTION AREAS. THEY SHALL HOWEVER BE REPLACED AT THE END OF EACH WORKING DAY WHEN RAIN IS OCCURRING OR PREDICTED AND AT THE END OF THE WORK DAY EACH FRIDAY.
6. EROSION AND SEDIMENT CONTROL SHALL BE IMPLEMENTED PRIOR TO OCTOBER 15 FOR THOSE PORTIONS OF THE SITE WHICH HAVE BEEN DISTURBED. EROSION AND SEDIMENT CONTROL MEASURES SHALL BE MAINTAINED THROUGHOUT CONSTRUCTION UNTIL GROUND COVER HAS BEEN ESTABLISHED.
7. ALL GRADED OR OTHERWISE DISTURBED AREAS SHALL BE HYDRO-SEEDED FOLLOWING COMPLETION OF GRADING BUT, IN ANY EVENT, PRIOR TO OCTOBER 15. DEPENDING ON THE STATUS OF THE WORK ON OCTOBER 15, ADDITIONAL EROSION AND SEDIMENT CONTROL OR WINTERIZATION MEASURES MAY BE REQUIRED. FOR AREAS TO BE HYDRO-SEEDED USE SEED MIX SPECIFIED IN THE STANDARD SPECIFICATIONS.
8. THE FOLLOWING WINTERIZATION MEASURES SHALL BE IMPLEMENTED IF ALL GRADING IS NOT COMPLETED OR SCHEDULED TO BE COMPLETED PRIOR TO OCTOBER 15.
  - A. ALL GRADING SHALL BE CARRIED OUT IN SUCH A WAY AS TO DISTURB THE LEAST POSSIBLE AREA.
9. IF EROSION AND SEDIMENT CONTROL FEATURES ARE REMOVED TO ALLOW CONSTRUCTION TO CONTINUE, THEY SHALL BE REPLACED WHEN RAIN IS IMMINENT OR PREDICTED AND AT THE END OF THE WORKDAY EACH FRIDAY.
10. ALL TEMPORARY EROSION AND SEDIMENT CONTROL MEASURES SHALL BE REMOVED AT THE COMPLETION OF CONSTRUCTION PROJECT.

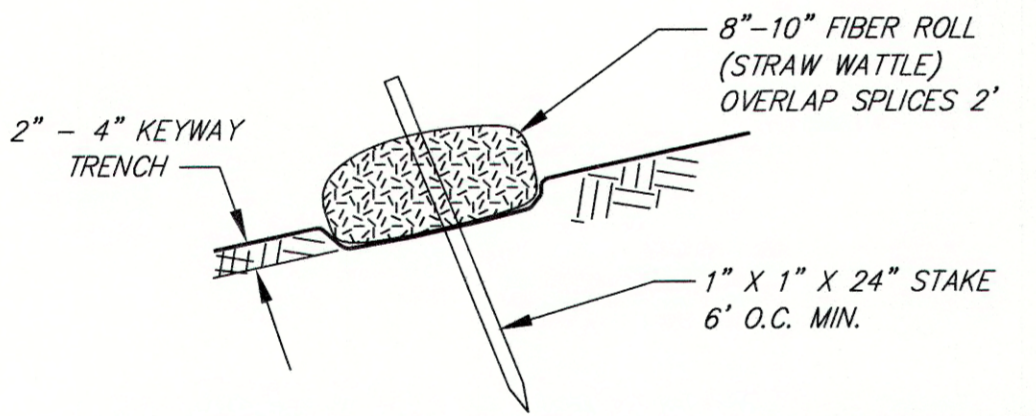


**DROP CONNECTION MANHOLE**  
NOT TO SCALE

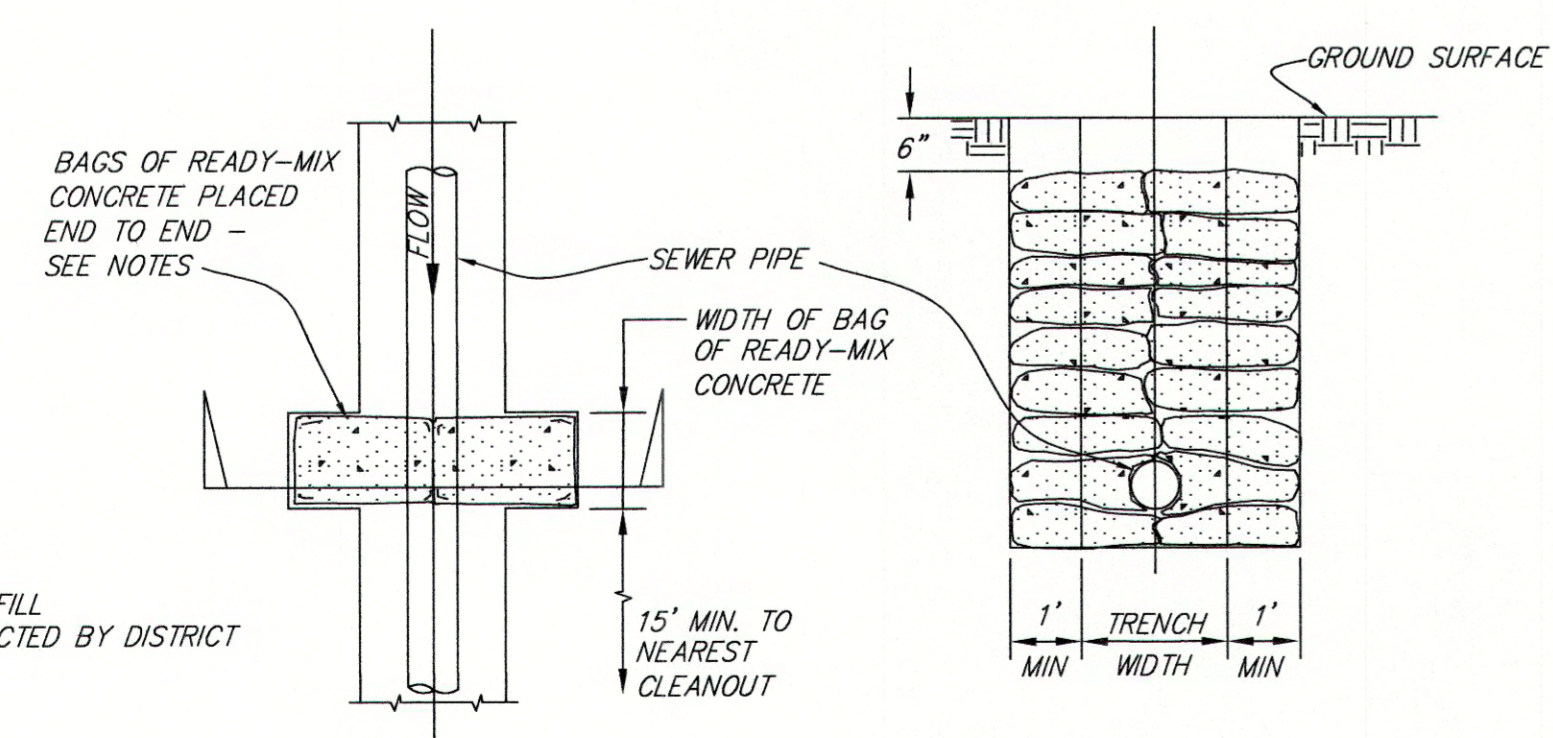
(SEE STANDARD DRAWING SD2 FOR ADDITIONAL DETAILS)



**SSMH 2 DETAIL**  
NOT TO SCALE

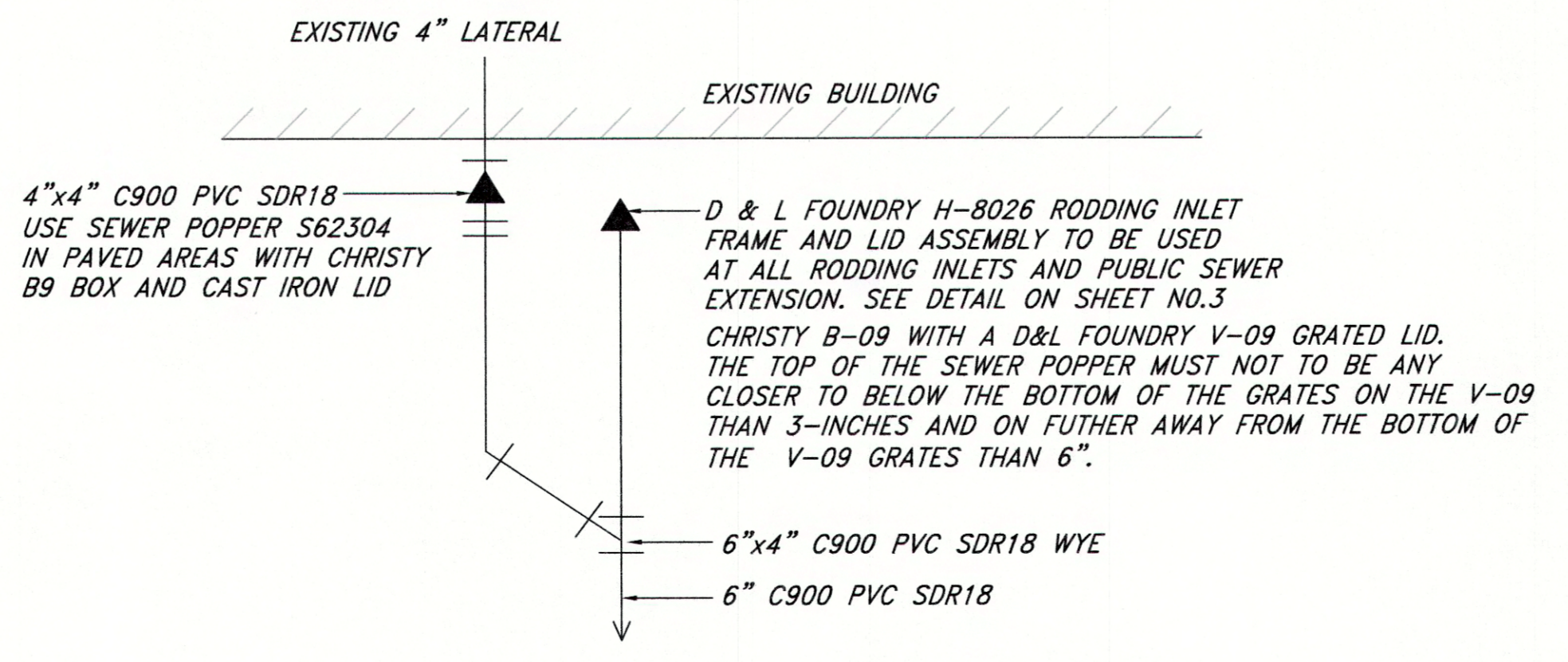


**TEMPORARY FIBER ROLL INSTALLATION DETAIL**  
NOT TO SCALE



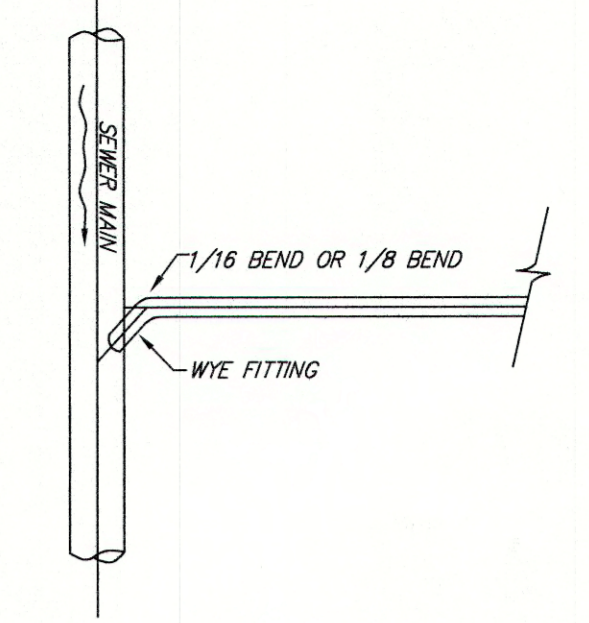
**TRENCH DAM DETAIL**  
Not to Scale

Maintain 15 feet clear from sanitary sewer lateral connection, typical.

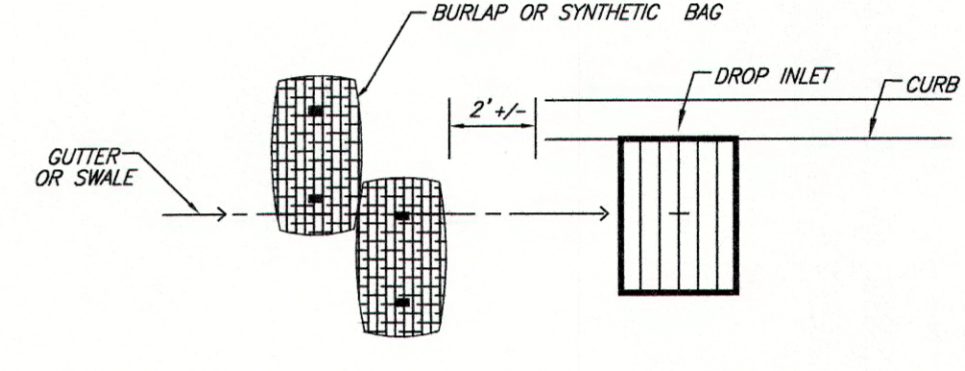


**EXISTING 4" BUILDING TO NEW 6" LATERAL DETAIL**  
NOT TO SCALE

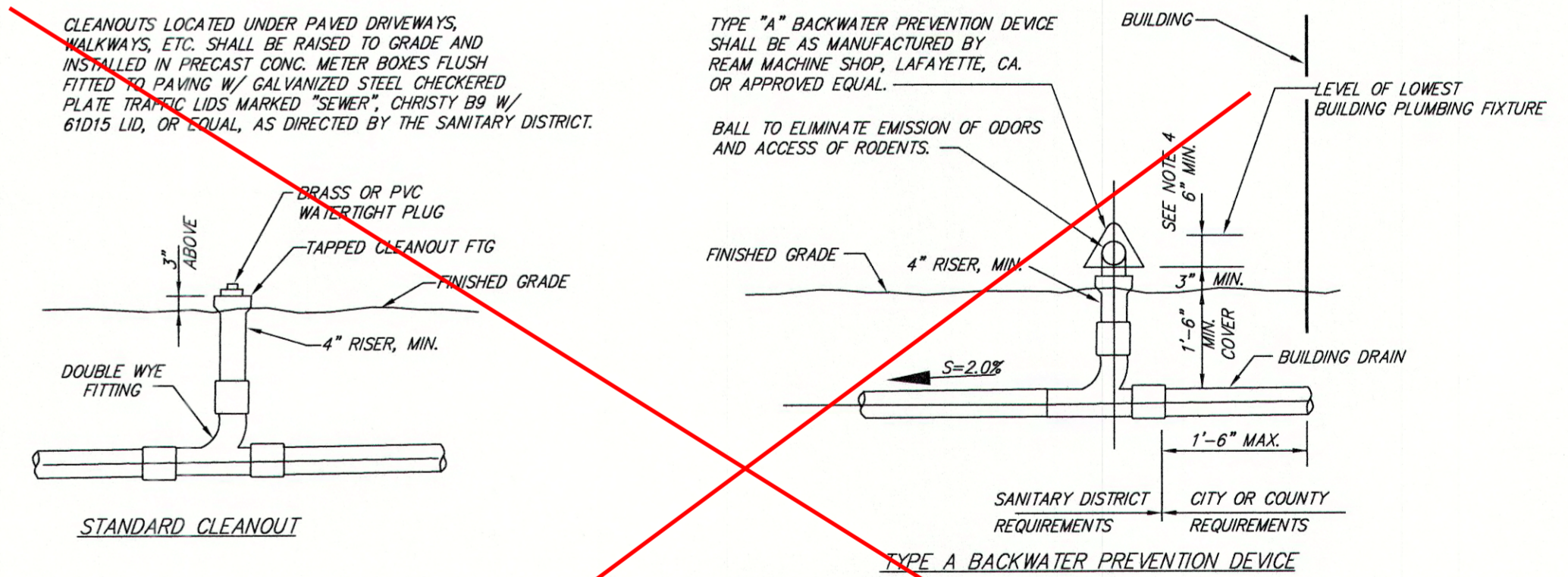
- NOTES:**
1. WHEN A LATERAL SEWER IS INSTALLED IN ADVANCE OF THE BUILDING SEWER, IT SHALL BE TERMINATED AT OR NEAR THE PROPERTY LINE. THE END OF THE LATERAL SHALL BE MARKED WITH A 4" X 4" REDWOOD STAKE.
  2. WHERE CONCRETE CURBS AND GUTTERS EXIST OR ARE TO BE PART OF AN IMPROVEMENT, EACH SIDE SEWER SHALL BE PERMANENTLY LOCATED BY IMPRINTING OR CHISELING AN "S" (3" SIZE) IN THE FACE OF THE CURB VERTICALLY ABOVE THE SEWER PIPE.
  3. BACKFILL SHALL NOT BE PLACED UNTIL PIPE INSTALLATION HAS BEEN INSPECTED AND APPROVED BY THE CITY OF SAUSALITO.
  4. LATERAL TRENCHES SHALL BE THE SAME AS TYPICAL TRENCH DETAIL SD4.
  5. THE SIZE OF THE SEWER LATERAL OR MAIN SHALL BE AS SHOWN ON PLAN SHEET 1 OF 3.



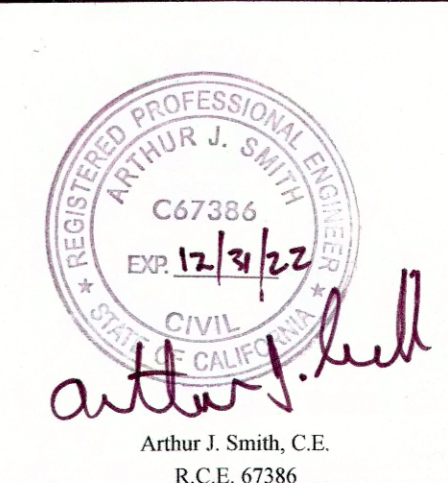
**TYPICAL SIDE SEWER DETAILS**  
NOT TO SCALE



**DETAIL BURLAP OR SYNTHETIC BAG CHECK DAM**  
NOT TO SCALE



**STANDARD CLEANOUT AND BACKWATER PREVENTION DEVICE**  
NOT TO SCALE



A.P.N.: 000-000-000  
FIELD BOOK NO.: ###

**ILS ASSOCIATES, INC.**  
CIVIL ENGINEERING AND LAND SURVEYING  
79 GALLU DRIVE, SUITE A NOVATO, CA 94949-5717 (415)883-9200 FAX (415)883-2763

**200 BLOCK OF WEST STREET**  
SAUSALITO  
MARIN COUNTY CALIFORNIA

DATE: 07-05-2022  
JOB NO.: 9293  
SHEET NO.: 2 OF 4

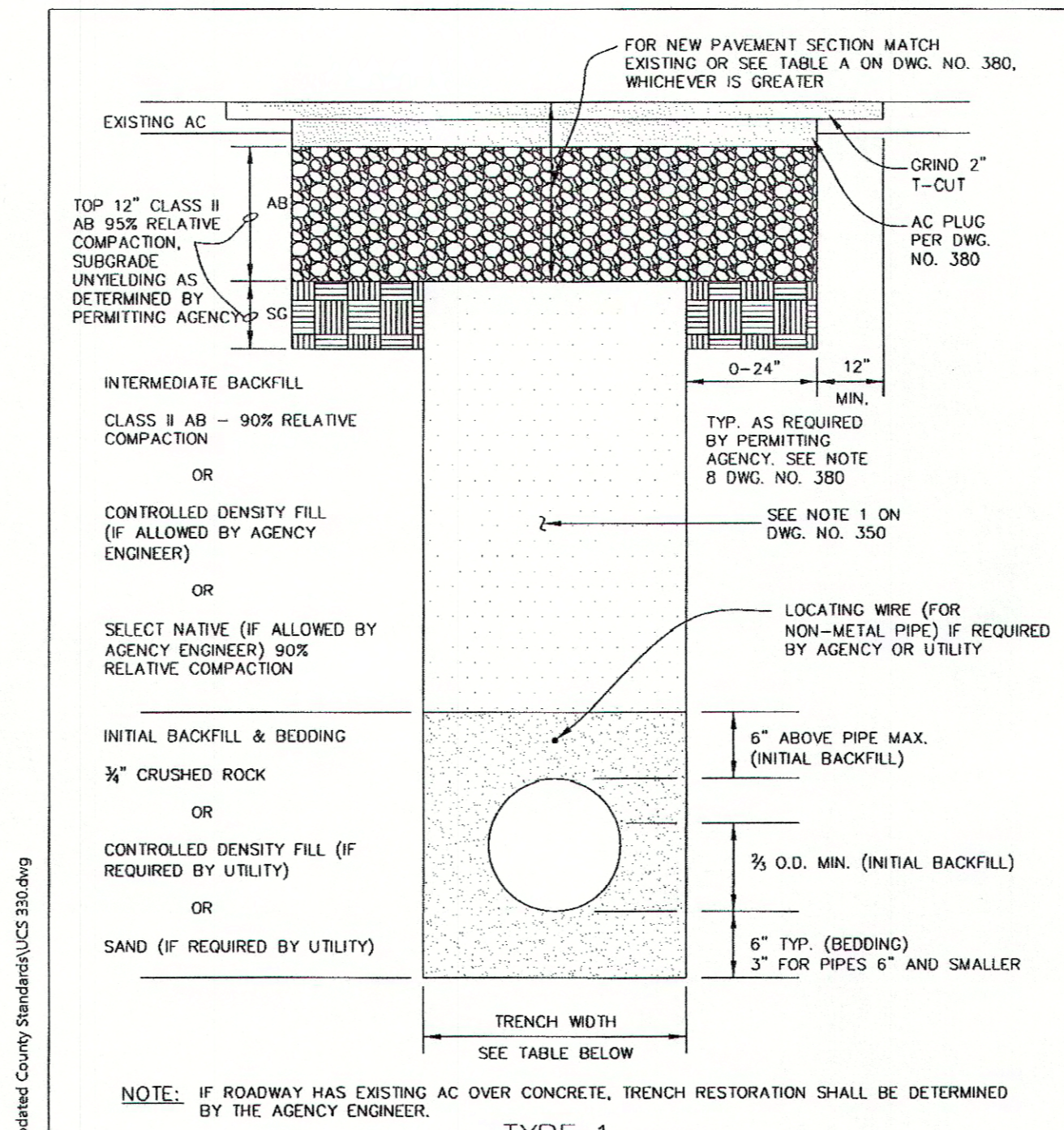
NOTES AND DETAILS

**GENERAL NOTES:**

- ALL MATERIALS AND WORKMANSHIP FOR SITE WORK SHALL CONFORM WITH THESE PLANS AND CITY STANDARDS, AND THE MAY, 2008 UNIFORM CONSTRUCTION STANDARDS. DRAWING NUMBERS (UCS DWG. NO.) REFER TO THE UNIFORM CONSTRUCTION STANDARDS. STANDARD DRAWINGS (SD) REFER TO CITY STANDARDS.
- THE OFFICE OF ILS ASSOCIATES, INC. (ILS) SHALL BE NOTIFIED AT LEAST TWO (2) WORKING DAYS PRIOR TO REQUIRING ANY GRADE STAKES. TELEPHONE: (415)883-9200.
- THE OFFICE OF ILS SHALL BE NOTIFIED IN ADVANCE OF CONDITIONS THAT REQUIRE ANY CHANGES FROM THESE PLANS.
- THE CONTRACTOR SHALL NOTIFY THE CITY OF SAUSALITO, ADJACENT PROPERTY OWNERS AND ILS ASSOCIATES, INC. (ILS) AT LEAST TWO (2) WORKING DAYS PRIOR TO COMMENCEMENT OF WORK.
- ALL EXCESS MATERIAL OBTAINED DURING CONSTRUCTION INCLUDING EXCAVATION AND GRADING SPOILS, TRENCH SPOILS, CONCRETE RUBBLE, AND ALL OTHER MISCELLANEOUS ITEMS SHALL BE DISPOSED OF BY THE CONTRACTOR AT A LEGAL DUMP SITE.
- IT IS THE CONTRACTOR'S RESPONSIBILITY TO VERIFY THE LOCATION AND ELEVATION OF ALL EXISTING UTILITIES PRIOR TO CONSTRUCTION, AND SHORED DEPENDING ON SOIL CONDITIONS.
- ALL TRENCHES 5' IN DEPTH OR GREATER SHALL BE SHORED AND BRACED ACCORDING TO STATE LAW.
- CONTRACTOR SHALL CONTACT USA A MINIMUM OF 48 HOURS PRIOR TO COMMENCEMENT OF DIGGING.
- CONTRACTOR SHALL BE RESPONSIBLE FOR COORDINATING CONSTRUCTION TO ELIMINATE FLOWS OR BYPASSING FLOWS FROM ADJACENT PROPERTIES. A BYPASS PLAN SHALL BE SUBMITTED FROM THE CONTRACTOR TO BE REVIEWED BY THE CITY.
- CONTRACTOR SHALL RESTORE ALL DISTURBED SOIL/LANDSCAPE TO ORIGINAL.
- CONTRACTOR SHALL REMOVE ALL TEMPORARY FACILITIES AS PART OF THE FINAL DEMOBILIZATION PROCESS.
- CONTRACTOR TO PROVIDE CONTINUOUS ACCESS TO PROPERTIES UNLESS PRIOR ARRANGEMENTS HAVE BEEN MADE WITH RESIDENTS.
- THE CONTRACTOR AGREES THAT IN ACCORDANCE WITH GENERALLY ACCEPTED CONSTRUCTION PRACTICE, THE CONTRACTOR WILL BE REQUIRED TO ASSUME SOLE AND COMPLETE RESPONSIBILITY FOR JOB SITE CONDITIONS DURING THE COURSE OF CONSTRUCTION OF THE PROJECT, INCLUDING SAFETY OF ALL PERSONS AND PROPERTY; THAT THIS REQUIREMENT SHALL BE MADE TO APPLY CONTINUOUSLY AND NOT BE LIMITED TO NORMAL WORKING HOURS, AND THE CONTRACTOR FURTHER AGREES TO DEFEND, INDEMNIFY AND HOLD ILS HARMLESS FROM ANY AND ALL LIABILITY, REAL OR ALLEGED, IN CONNECTION WITH THE PERFORMANCE OF WORK ON THIS PROJECT, EXCEPTING LIABILITY ARISING FROM THE SOLE NEGLIGENCE OF ILS.

**SEWER NOTES:**

- ALL MATERIALS AND WORKMANSHIP FOR WORK SHALL CONFORM WITH THESE PLANS, AND THE SAUSALITO-MARIN CITY SANITARY DISTRICT (S-MC) STANDARD SPECIFICATIONS AND DRAWINGS, DATED 2007 ADOPTED BY THE CITY OF SAUSALITO WITH RESOLUTION 5117 OF MARCH 2, 2010 ("CITY STANDARDS").
- THE CONTRACTOR SHALL OBTAIN AN ENCROACHMENT PERMIT FROM THE CITY OF SAUSALITO PRIOR TO COMMENCEMENT OF WORK. CONTRACTOR SHALL SUBMIT A COMPLETED ENCROACHMENT PERMIT APPLICATION, INCLUDING BUT NOT LIMITED TO A TRAFFIC CONTROL PLAN AND STAGING PLAN. THERE SHALL BE NO FEE FOR THE ENCROACHMENT PERMIT. THE CITY OF SAUSALITO SHALL BE NAMED AS AN ADDITIONAL INSURED ON A SEPARATE ENDORSEMENT SHEET THAT MODIFIES THE GENERAL LIABILITY POLICY.
- THE CONNECTION OF THE SEWER LATERALS TO THE NEW MAIN MUST BE MADE IN THE PRESENCE OF A CITY OF SAUSALITO INSPECTOR.
- ALL WORK SHALL BE INSPECTED BY THE CITY OF SAUSALITO.
- ALL WORK WILL BE REQUIRED TO PASS PRE-BACKFILL TESTING AND POST-CONSTRUCTION TESTING INCLUDING AIR TESTING (HOLD 5 PSI OR 10-FOOT HYDRAULIC HEAD FOR 15 MINUTES WITHOUT UNACCEPTABLE LEAKAGE), A MANDREL TEST, AND A POST-CONSTRUCTION VIDEO INSPECTION.
- BACKFILL SHALL NOT BE PLACED UNTIL PIPE INSTALLATION HAS BEEN INSPECTED AND APPROVED BY THE CITY OF SAUSALITO.
- LATERAL TRENCHES SHALL BE THE SAME AS TYPICAL TRENCH DETAIL SDA.
- PREVENT ALL DEMOLITION MATERIALS FROM ENTERING SANITARY SEWER PIPES.
- EXISTING MANHOLE 100103 SHALL HAVE INTERIOR OF THE MANHOLE REHABILITATED BY PREPARATION OF THE INTERIOR SURFACE OF MANHOLE USING HYDRO-BLASTING TO REMOVE ALL DEBRIS, MATERIALS AND LOOSE CONCRETE TO GOOD SUBSTRATE, ACCORDING TO THE PRODUCT MANUFACTURER SPECIFICATIONS. INTERIOR OF MANHOLE 100103 SHALL BE RESTORED AND RE-SURFACED USING MAINSTAY ML-72 OR BETTER PORTLAND CEMENT BASED MICRO SILICA-ENHANCED, HIGH STRENGTH STURCTURE RESTORATION AND RESURFACING MORTAR AND MAINSTAY DS-5 SOLIDS EPOXY COATING OR BETTER. REPAIR EXISTING LEAKS IN MANHOLE AND CREATE A SMOOTH TRANSITION BETWEEN BOTTOM AND WALLS OF MANHOLE TO AVOID ACCUMULATION OF DEBRIS, SEALING AND PLUGGING AS NEEDED.

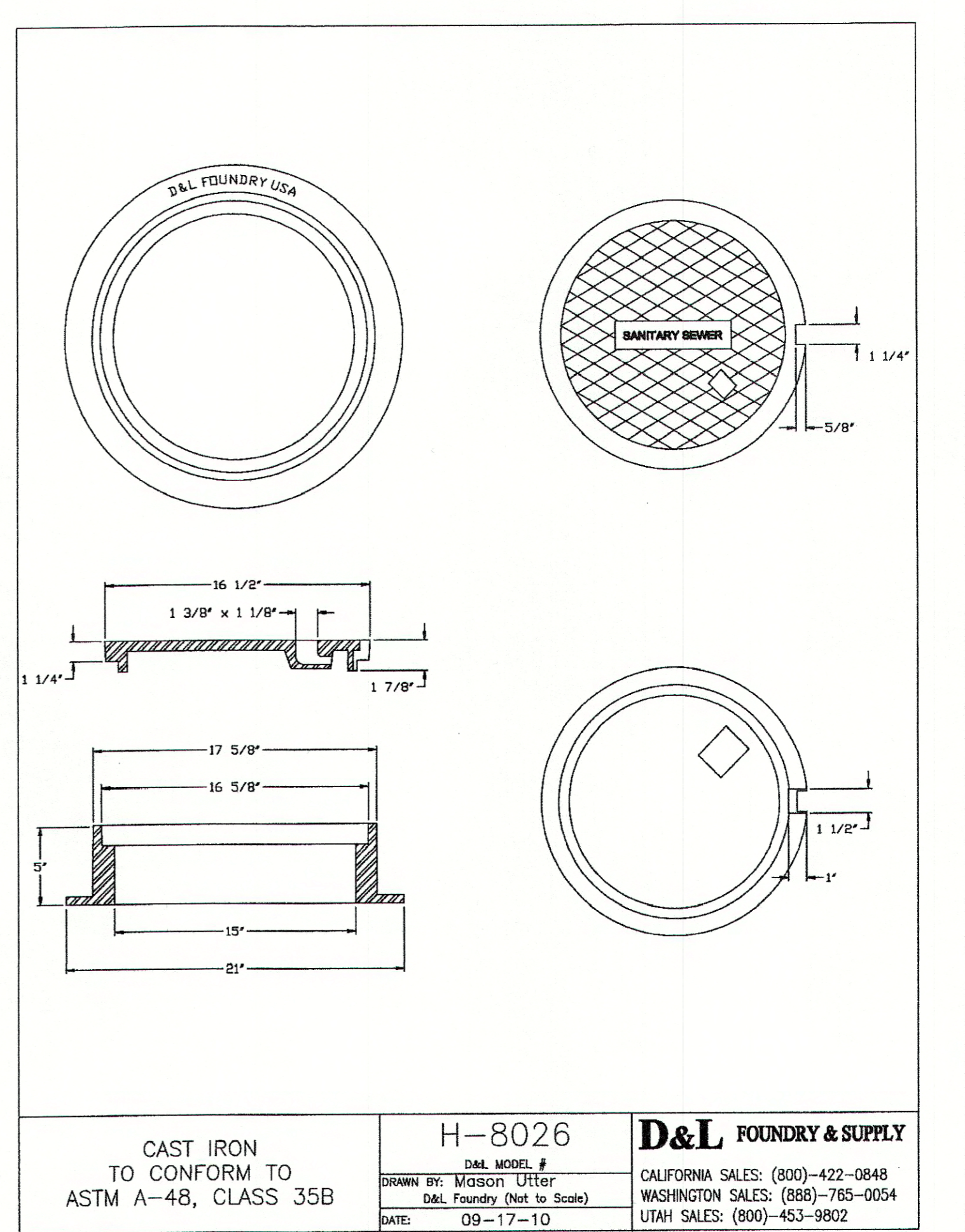


**TYPE 1**  
ASPHALT CONCRETE PAVED STREETS

CONDUIT SIZE	LESS THAN 6"	6" TO 24"	OVER 24" TO 60"	OVER 60"
TRENCH WIDTH	O.D. + 12"	O.D. + 24"	O.D. + 24"	O.D. + 24"

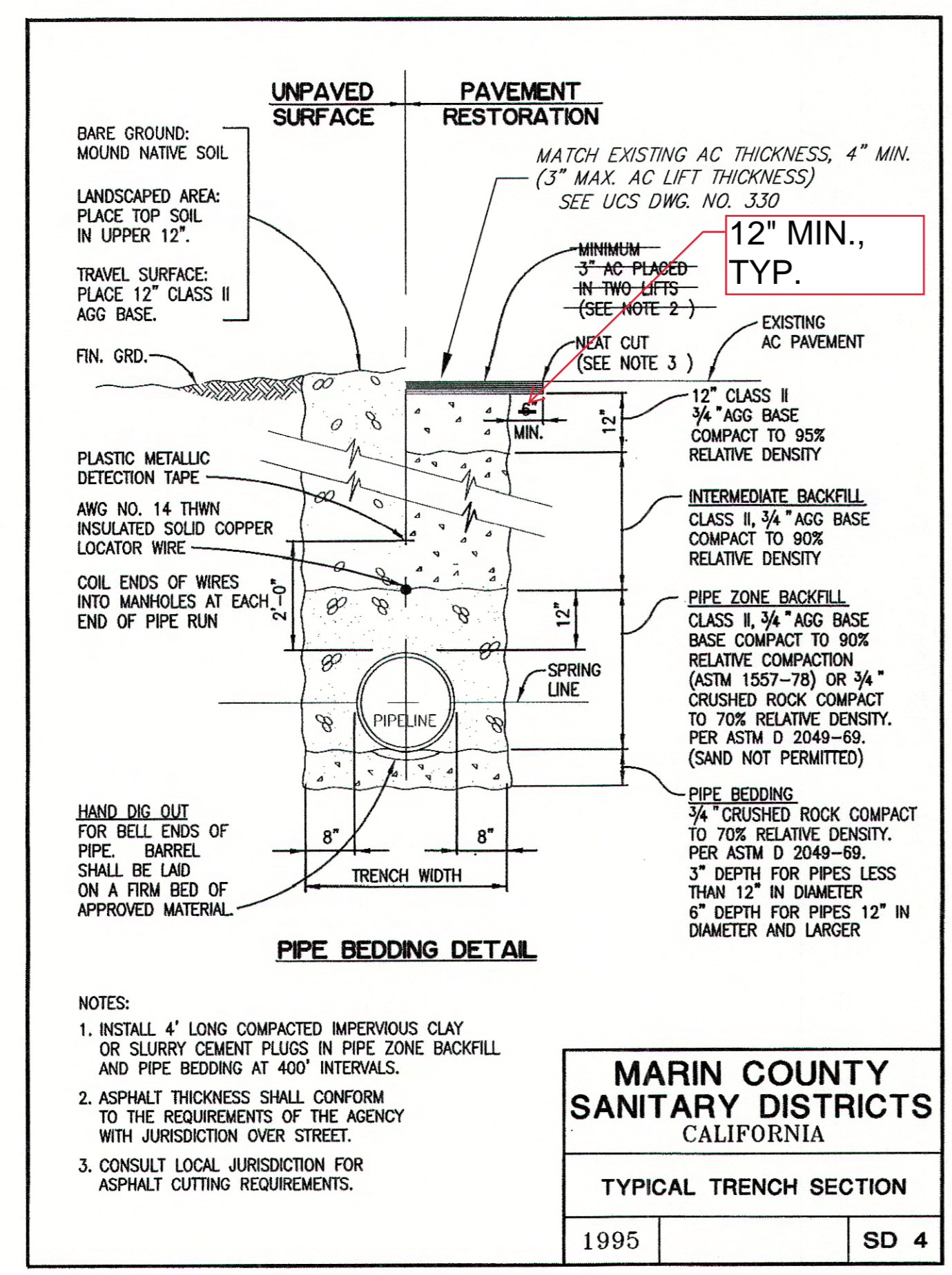
FOR PIPES WITH MORE THAN 36" OF COVER, THE AGENCY ENGINEER MAY ALLOW A REDUCED TRENCH WIDTH INCLUDING A CHANGE TO A SELF-COMPACTING ENGINEERED TYPE OF INITIAL BACKFILL MATERIAL.

UNIFORM STANDARDS	TRENCH DETAILS	MARCH 2018
ALL CITIES AND COUNTY OF MARIN	SHEET 1 OF 3	DWG. NO. 330
REV.	DATE	BY



CAST IRON TO CONFORM TO ASTM A-48, CLASS 35B

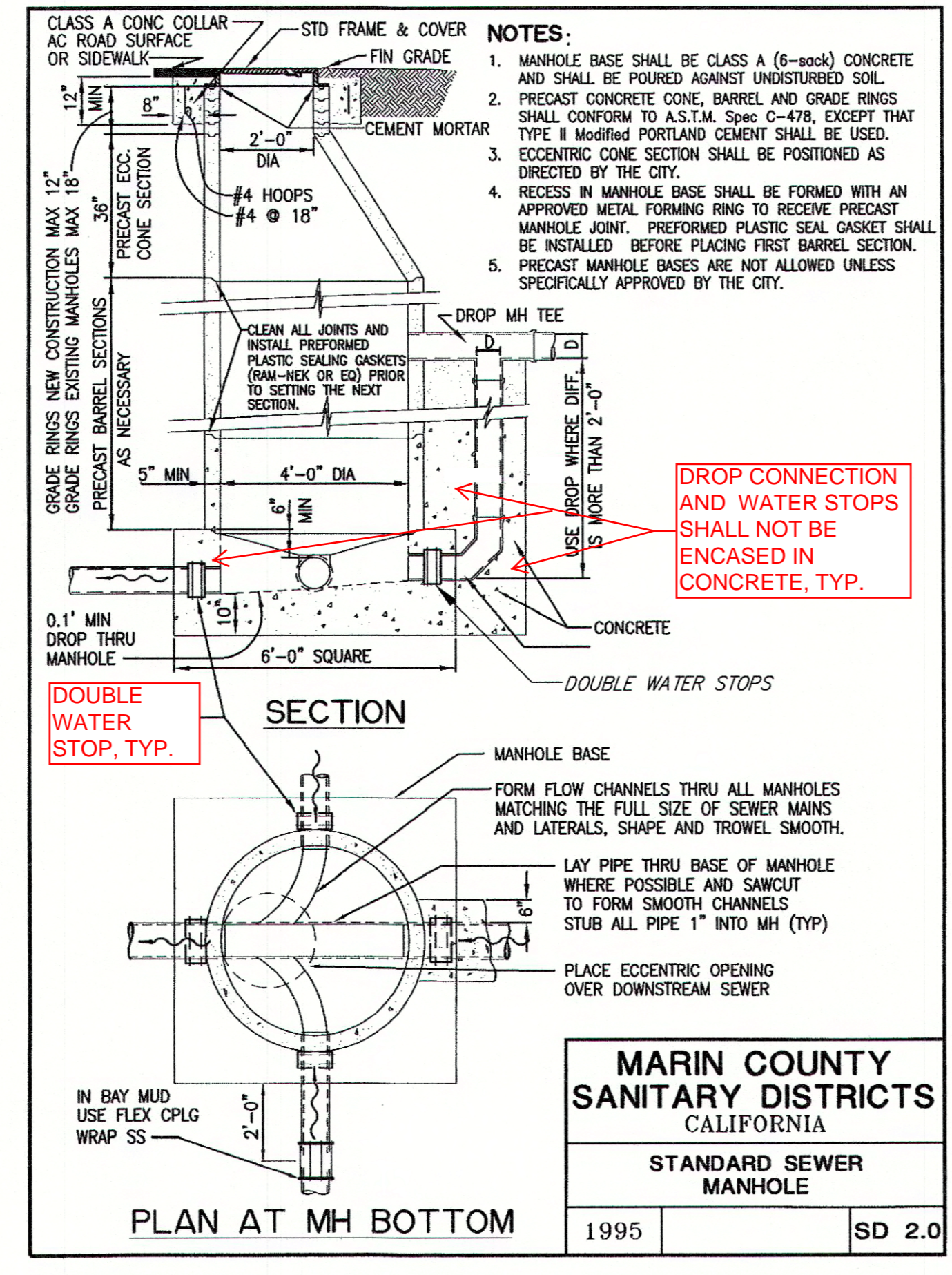
H-8026  
D&L FOUNDRY & SUPPLY  
CALIFORNIA SALES: (800)-422-0848  
WASHINGTON SALES: (888)-765-0054  
UTAH SALES: (800)-453-9802



**MARIN COUNTY SANITARY DISTRICTS CALIFORNIA**

TYPICAL TRENCH SECTION

1995	SD 4
------	------



**MARIN COUNTY SANITARY DISTRICTS CALIFORNIA**

STANDARD SEWER MANHOLE

1995	SD 2.0
------	--------

**Reinforced Concrete Lid**  
No. B09D  
20 lbs.

**UTILITY BOX**  
No. B09BOX  
90 lbs.

FL09D, B09P, B09C, B09G, B09-61G, B09-61D

Ordering Code	Item	Approx. Shipping Weight	Description
B09BOX	BOX	90	B09 Utility Box (10 1/4" x 16 3/4") - 28 per pallet
B09C	LID	22	Cast iron
B09D	LID	20	Reinforced concrete
FL09D	LID	5	Fibreglass lid, non-concrete
B09P	LID	20	Reinforced concrete with 1 3/4" hole for reading probe
B09G	LID	18	Reinforced concrete with 5" x 8" cast iron, self-closing, reading lid with frame
B09TL	LID	23	Cast iron lid with lock
BUTLK	KEY	1	Universal TL key for cast iron lid with lock
B09-61D	COVER	22	Steel checker plate
B09-61G	COVER	22	Steel checker plate with 6" round, self-closing reading lid
B09X12	EXTENSION	87	12" Reinforced concrete - 28 per pallet.
B09SL	SLUG	32	Reinforced concrete (13 3/4" x 19 3/4")

Galvanizing available on all steel covers.

**Oldcastle Precast Enclosure Solutions**  
B09 BOX  
B09 UTILITY BOX 10-1/4" x 16-3/4"

ARTHUR J. SMITH, C.E.  
REG. PROFESSIONAL ENGINEER  
C67386  
EXP. 12/31/22  
ARTHUR J. SMITH

**ILS ASSOCIATES, INC.**  
CIVIL ENGINEERING AND LAND SURVEYING

79 GALLI DRIVE, SUITE A NOVATO, CA 94949-5717 (415)883-9200 FAX (415)883-2763

200 BLOCK OF WEST STREET  
SAUSALITO

MARIN COUNTY CALIFORNIA

NOTES AND DETAILS

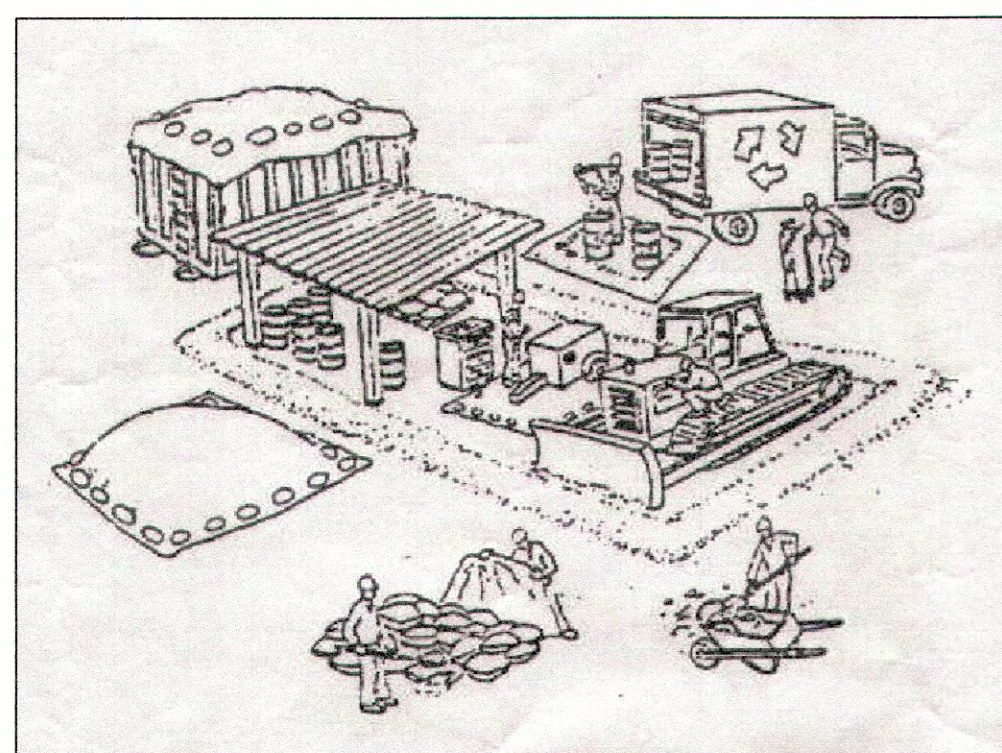
DATE: 07-05-2022  
JOB NO.: 9293  
SHEET NO.: 3 OF 4

A.P.N.: 000-000-000  
FIELD BOOK NO.: ##  
9293SSB.dwg

# Pollution Prevention – It's Part of the Plan

## Make sure your crews and subs do the job right!

Runoff from streets and other paved areas is a major source of pollution in creeks and the Bay. Construction activities can directly affect the health of the Bay unless contractors and crews plan ahead to keep dirt, debris, and other construction waste away from storm drains and local creeks. Following these guidelines will ensure your compliance with pertinent ordinance requirements.



### Materials storage & spill cleanup

#### Non-hazardous materials management

- ✓ Sand, dirt, and similar materials must be stored at least 10 feet from catch basins, and covered with a tarp during wet weather or when rain is forecast.
- ✓ Use (but don't overuse) reclaimed water for dust control as needed.
- ✓ Sweep streets and other paved areas daily. Do not wash down streets or work areas with water.
- ✓ Recycle all asphalt, concrete, and aggregate base material from demolition activities.
- ✓ Check dumpsters regularly for leaks and to make sure they don't overflow. Repair or replace leaking dumpsters properly.

#### Hazardous materials management

- ✓ Label all hazardous materials and hazardous wastes (such as pesticides, paints, thinners, solvents, fuel, oil, and antifreeze) in accordance with City, state, and federal regulations.
- ✓ Store hazardous materials and wastes in secondary containment and cover them during wet weather.
- ✓ Follow manufacturer's application instructions for hazardous materials and be careful not to use more than necessary. Do not apply chemicals outdoors when rain is forecast within 24 hours.
- ✓ Be sure to arrange for appropriate disposal of all hazardous wastes.

#### Spill prevention and control

- ✓ Keep a stockpile of spill cleanup materials (rags, absorbents, etc.) available at the construction site at all times.
- ✓ When spills or leaks occur, contain them immediately and be particularly careful to prevent leaks and spills from reaching the gutter, street, or storm drain. Never wash spilled material into a gutter, street, storm drain, or creek!
- ✓ Report any hazardous material spills to the appropriate agency(s) immediately!

### Vehicle and equipment maintenance & cleaning

- ✓ Inspect vehicles and equipment for leaks frequently. Use drip pans to catch leaks until repairs are made; repair leaks promptly.
- ✓ Fuel and maintain vehicles on site only in a bermed area or over a drip pan that is big enough to prevent runoff.
- ✓ If you must clean vehicles or equipment on site, clean with water only in a bermed area that will not allow rinsewater to run into gutters, streets, storm drains, or creeks.
- ✓ Do not clean vehicles or equipment on-site using soaps, solvents, degreasers, steam cleaning equipment, etc.



### Earthwork & contaminated soils

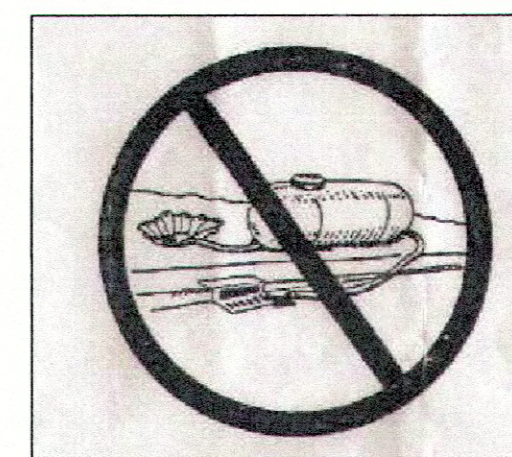
- ✓ Keep excavated soil on the site where it is least likely to collect in the street. Transfer to dump trucks should take place on the site, not in the street.
- Use hay bales, silt fences, or other control measures to minimize the flow of silt off the site.



- ✓ Avoid scheduling earth moving activities during the rainy season if possible. If grading activities during wet weather are allowed in your permit, be sure to implement all control measures necessary to prevent erosion.
- ✓ Mature vegetation is the best form of erosion control. Minimize disturbance to existing vegetation whenever possible.
- ✓ If you disturb a slope during construction prevent erosion by securing the soil with erosion control fabric, or seed with fast-growing grasses as soon as possible. Place hay bales down-slope until soil is secure. to prevent erosion.
- ✓ If you suspect contamination (from site history, discoloration, odor, texture, abandoned underground tanks or pipes, or buried debris), call the Local Agency for help in determining what testing should be done.
- ✓ Manage disposal of contaminated soil according to Local Agency instructions.

### Dewatering operations

- ✓ Reuse water for dust control, irrigation, or another on-site purpose to the greatest extent possible.
- ✓ Be sure to call the Local Agency's Stormwater Manager before discharging water to a street, gutter, or storm drain. Filtration or diversion through a basin, tank, or sediment trap may be required.
- ✓ In areas of known contamination, testing is required prior to reuse or discharge of groundwater. Consult with the Local Agency to determine what testing to do and to interpret results. Contaminated groundwater must be treated or hauled off-site for proper disposal.



### Saw cutting

- ✓ Always completely cover or barricade storm drain inlets when saw cutting. Use filter fabric, hay bales, sand bags, or fine gravel dams to keep slurry out of the storm drain system.
- ✓ Shovel, absorb, or vacuum saw-cut slurry and pick up all waste as soon as you are finished in one location or at the end of each work day (whichever is sooner!).
- ✓ If saw cut slurry enters a catch basin, clean it up immediately.



### Paving/asphalt work

- ✓ Do not pave during wet weather or when rain is forecast.
- ✓ Always cover storm drain inlets and man-holes when paving or applying seal coat, tack coat, slurry seal, or fog seal.
- ✓ Place drip pans or absorbent material under paving equipment when not in use.
- ✓ Do not sweep or wash down excess sand from sand sealing into gutters, storm drains, or creeks. Collect sand and return it to the stockpile, or dispose of it as trash.
- ✓ Do not use water to wash down fresh asphalt concrete pavement.



### Painting

- ✓ Never rinse paint brushes or materials in a gutter or street.
- ✓ Paint out excess water-based paint before rinsing brushes, rollers, or containers in a sink. If you can't use a sink, direct wash water to a dirt area and spade it in.
- ✓ Paint out excess oil-based paint before cleaning brushes in thinner.
- ✓ Filter paint thinners and solvents for reuse whenever possible. Dispose of oil-based paint sludge and unusable thinner as hazardous waste.



## Storm drain polluters may be liable for fines!

For more detailed information, contact the Stormwater Manager of the appropriate local agency.

<b>ILS ASSOCIATES, INC.</b> CIVIL ENGINEERING AND LAND SURVEYING	
79 GALLI DRIVE, SUITE A NOVATO, CA 94949-5717 (415)883-9200 FAX (415)883-2763	
<b>200 BLOCK OF WEST STREET</b> SAUSALITO	
MARIN COUNTY	CALIFORNIA
<b>BEST MANAGEMENT PRACTICES</b>	
DATE: 07-05-2022	SHEET NO. 9293
4 OF 4	