

# CITY OF SAUSALITO

## DEPARTMENT OF PUBLIC WORKS

### PLANS FOR CONSTRUCTION OF

## WOODWARD AVENUE SEWER MAIN REALIGNMENT



**CSW | ST 2**

**CSW/Stuber-Stroeh Engineering Group, Inc.**  
 504 Redwood Blvd  
 Novato, CA 94947  
 tel: 415.883.9850  
 fax: 415.883.9835  
 Civil Engineers  
 Surveying & Mapping  
 Land Planning  
 Construction Management  
 http://www.cswst2.com © 2021

Rev	Date	Description	Designed	Drawn	Checked
	08/31/23	BID SET	JBD	JBD	RJS

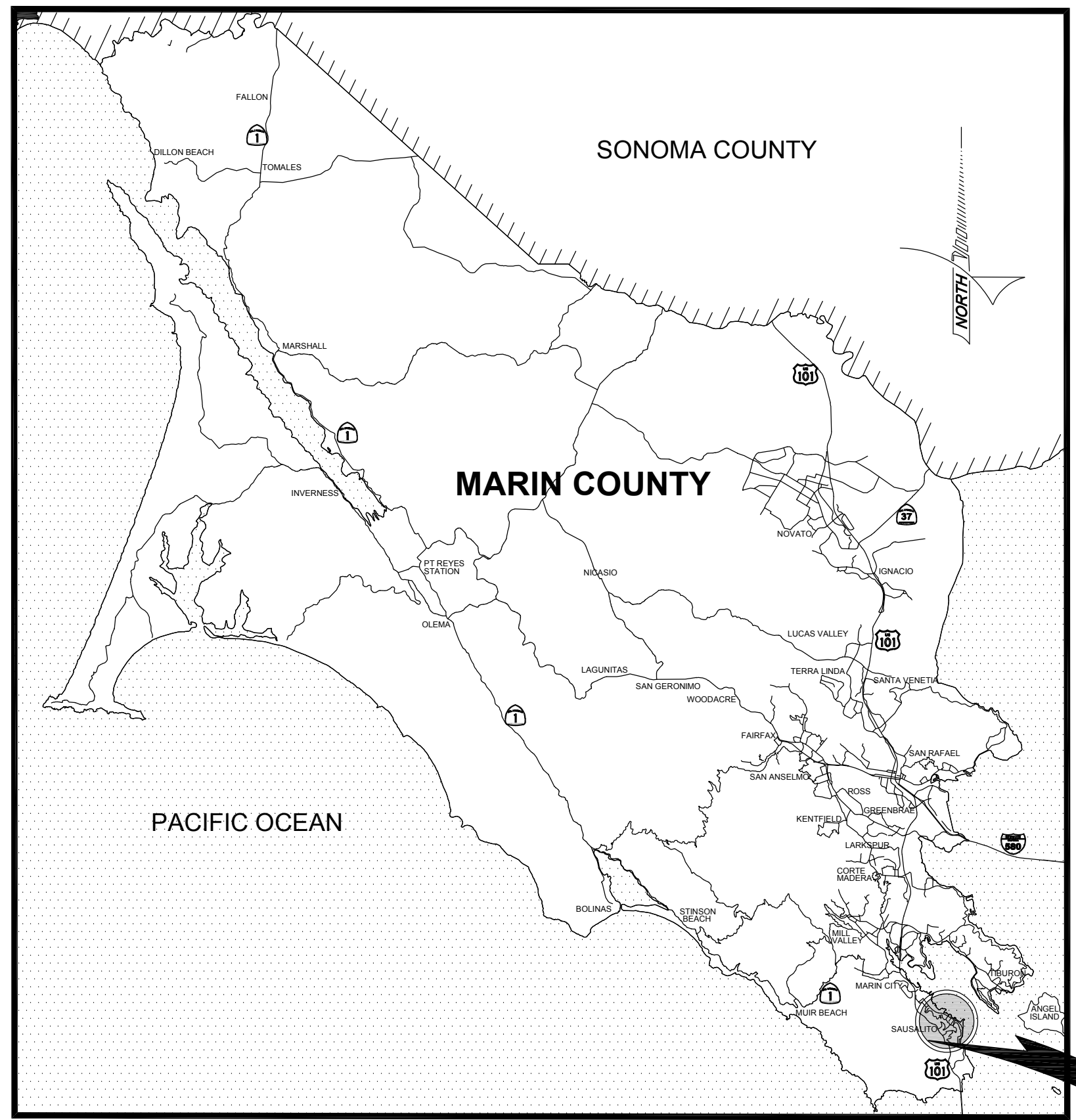
**WOODWARD AVENUE SEWER MAIN REALIGNMENT**  
**COVER SHEET**  
**SAUSALITO, CALIFORNIA**

City Of  
Sausalito  
 County Of  
Marin  
 State Of  
California

Prepared Under the Direction of:

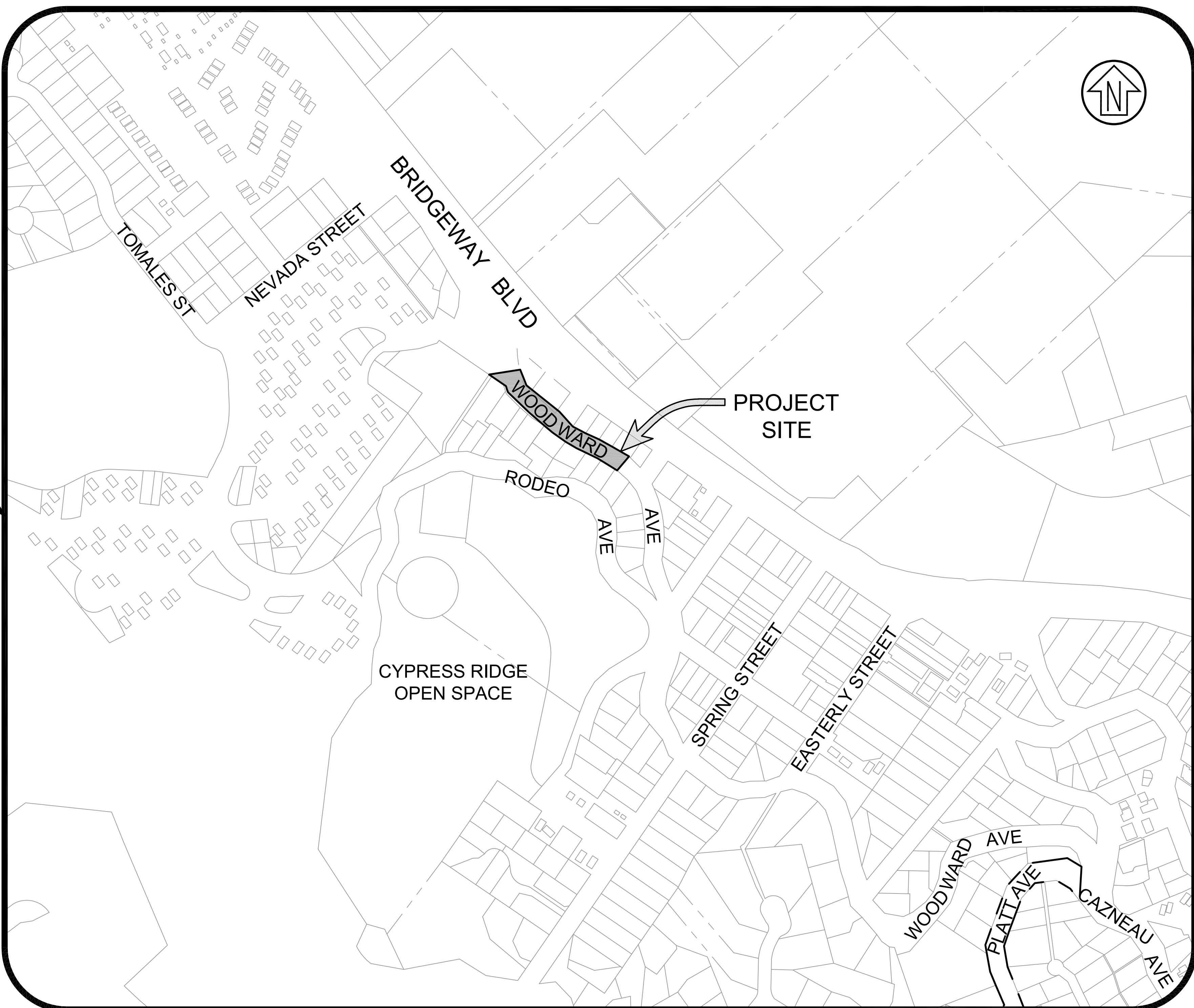


Sheet  
**C1.00**  
 Scale: As Shown  
 Date: June 2, 2023  
 Sheet Number: 1 OF 8



**LOCATION MAP**  
NOT TO SCALE

SHEET INDEX		
SHEET NO.		SHEET TITLE
C1.00	1	COVER SHEET
C1.01	2	GENERAL NOTES, ABBREVIATIONS, & SYMBOLS
C2.00	3	DEMOLITION PLAN (STA: 1+00 TO 5+00)
C3.00	4	PLAN & PROFILE (STA 1+00 TO 3+00)
C3.01	5	PLAN & PROFILE (STA 3+00 TO 5+00)
C4.00	6	CONSTRUCTION DETAILS
C4.01	7	CONSTRUCTION DETAILS
C5.00	8	EROSION CONTROL PLAN



**PROJECT LOCATION**  
1-INCH - 200 FT



W:\proj\Drawings\Share\Proj\2023\20230217 Woodward Sewer\DWG\Sheet\C1.00 - COVER SHEET.dwg 08/31/2023 - 10:52 PM user: j3.suzo

**ABBREVIATIONS**

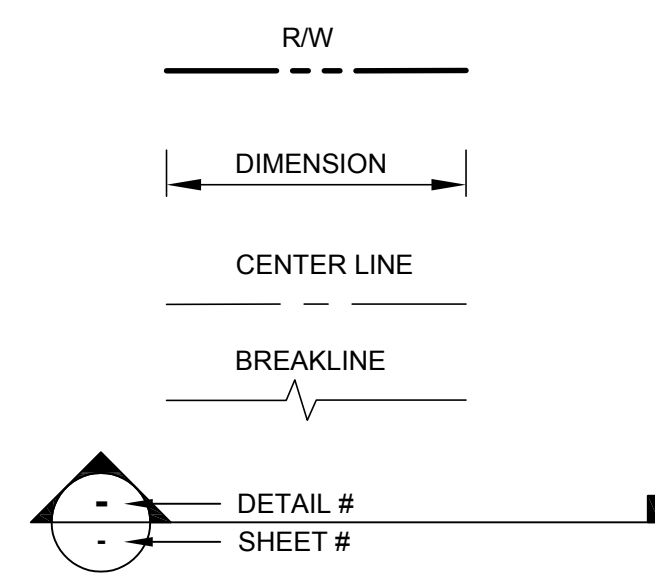
AB	AGGREGATE BASE	MH	MANHOLE / MAINTENANCE HOLE
ABAND	ABANDONED	MMWD	MARIN MUNICIPAL WATER DISTRICT
AC	ASPHALT CONCRETE	NTS	NOT TO SCALE
ACP	ASBESTOS CEMENT PIPE	POC	POINT ON CURVE
AD	AREA DRAIN	PRC	POINT OF REVERSE CURVE
C&G	CURB & GUTTER	PVC	POLYVINYL CHLORIDE PIPE
CB	CATCH BASIN	R.C.	RELATIVE COMPACTION
CIP	CAST IRON PIPE	RCP	REINFORCED CONCRETE PIPE
CL	CENTERLINE / CONTROL LINE	RI	RODDING INLET
CLR	CLEAR	ROW	RIGHT OF WAY
CMP	CORRUGATED METAL PIPE	SD	STORM DRAIN
CONC	CONCRETE	SDCO	STORM DRAIN CLEANOUT
CP	CONTROL POINT	SDMH	STORM DRAIN MAINTENANCE HOLE
DI	DROP INLET	SF	SQUARE FEET
EG	EXISTING GRADE	SL	STREET LIGHT
EL	ELEVATION	SS	SANITARY SEWER
EX	EXISTING	SSMH	SANITARY SEWER MAINTENANCE HOLE
FG	FINISH GRADE	TC	TOP OF CURB
FH	FIRE HYDRANT	TC DEP	TOP OF CURB DEPRESSION
FL	FLOWLINE	TW	TOP OF WALL
FS	FINISH SURFACE	tw	TOE OF WALL
GB	GRADE BREAK	TYP	TYPICAL
HDPE	HIGH DENSITY POLYETHYLENE PIPE	UCS	MARIN COUNTY UNIFORM CONSTRUCTION STANDARDS
HP	HIGH POINT	UNO	UNLESS NOTED OTHERWISE
INV	INVERT	VIF	VERIFY IN FIELD
JT	JOINT TRENCH	WSP	WELDED STEEL PIPE
LF	LINEAR FEET		
LOS	LINE OF SIGHT		
LP	LOW POINT		
MCS	MARIN COUNTY SANITARY DISTRICT		

**LINETYPES**

EXISTING		PROPOSED
	E	ELECTRICAL LINE
	G	GAS LINE
	W	WATER LINE
	OH	OVERHEAD UTILITY
	SS	SANITARY SEWER LINE
	SD	STORM DRAIN
	T	TELEPHONE LINE
		CENTERLINE
	30	CONTOUR - MAJOR
		CONTOUR - MINOR
	N/A	SAWCUT

**SYMBOLS**

EXISTING		PROPOSED
	SIGN	
	FOUND / SET - CONTROL POINT	N/A
	FOUND / SET - SURVEY STREET MONUMENT	N/A
	STORM DRAINAGE - DROP INLET	
	GAS VALVE	N/A
	FIRE HYDRANT	N/A
	GRADE	1.0%
	SSMH	



**CONSTRUCTION NOTES:**

- SAWCUT EXISTING PAVEMENT AT LIMIT OF WORK, TYPICAL.
- PROTECT ALL DRAINAGE AND SEWAGE STRUCTURES AND PIPES FROM INFILTRATION OF ALL CONSTRUCTION DEBRIS FOR THE DURATION OF THE WORK.

**GENERAL NOTES:**

- ALL WORK SHOWN ON THESE PLANS SHALL BE ACCOMPLISHED IN ACCORDANCE WITH THE SPECIAL PROVISIONS, THE UNIFORM CONSTRUCTION STANDARDS OF THE CITIES OF MARIN AND THE COUNTY OF MARIN DATED JULY, 2018, SAUSALITO-MARIN CITY SANITARY DISTRICT STANDARD SPECIFICATIONS DATED 2007, THE STATE STANDARD PLANS DATED 2018, AND THE STATE STANDARD SPECIFICATION DATED 2018, (INSO FAR AS THE SAME MAY APPLY) AS MODIFIED BY THE REVISED STANDARD PLANS AND SPECIFICATIONS IN EFFECT ON THE DATE OF THESE PLANS, AND THE SPECIAL PROVISIONS FOR THIS PROJECT.
- UTILITY LOCATIONS SHOWN ON THESE PLANS ARE APPROXIMATE ONLY AND MAY NOT BE COMPLETE. THERE MAY BE ADDITIONAL UTILITIES NOT SHOWN. IT SHALL BE THE SOLE RESPONSIBILITY OF THE CONTRACTOR TO VERIFY THE PRESENCE OF UTILITIES WITHIN THE WORK LIMITS, THEIR LOCATION AND THEIR DEPTH. VERIFICATION SHALL BE COORDINATED BY THE CONTRACTOR WITH USA NORTH, THE APPROPRIATE UTILITY OWNERS, AND BY PRUDENT EXAMINATION OF THE SITE FOR INDICATIONS THAT OVERHEAD OR SUBSURFACE INSTALLATIONS EXIST SUCH AS: MANHOLES, VALVE COVERS, WATER METERS, SEWER CLEANOUTS, GAS METERS, POLE RISERS, CABINETS, TRAFFIC LIGHTS, STREET LIGHTS, DRAINAGE INLETS AND ETC. CALL U.S.A. NORTH (UNDERGROUND SERVICE ALERT) 811, AND FOLLOW THE PROCEDURES SPECIFIED IN THE USA NORTH 811 EXCAVATION HANDBOOK.
- PRIOR TO STARTING AN EXCAVATION, EXAMINE THE SITE FOR INDICATIONS THAT UNMARKED SUBSURFACE INSTALLATIONS EXIST. SEWER LATERALS AND PRIVATE STORM DRAINS ARE EXAMPLES OF UTILITIES NOT MARKED BY UNDERGROUND SERVICE ALERT. CONTRACTOR IS RESPONSIBLE FOR LOCATING, POT-HOLING, AND PROTECTING ALL UTILITIES IN PLACE UNLESS OTHERWISE NOTED.
- THE CONTRACTOR IS RESPONSIBLE FOR MAINTAINING ADEQUATE DRAINAGE OF THE SITE, DURING INTERIM CONDITIONS OF CONSTRUCTION.
- CONTRACTOR SHALL PROVIDE ALL MATERIAL, LABOR, EQUIPMENT, FOR INSTALLATION, IMPLEMENTATION, AND MAINTENANCE OF ALL SURFACE WATER POLLUTION PREVENTION MEASURES THROUGHOUT THE FULL EXTENT OF THE PROJECT. SURFACE WATER IS CLASSIFIED AS ANY BODY OF WATER ABOVE GROUND.
- PAVEMENT MARKINGS DISTURBED, DAMAGED IN ANY FORM, OR TO ANY DEGREE WHILE THE CONTRACTOR HAS CUSTODY OF THE SITE SHALL BE REPLACED IN THEIR ENTIRETY AT CONTRACTOR'S EXPENSE.
- WHERE PARKING IS PERMITTED, THE CONTRACTOR SHALL POST "NO PARKING" SIGNS ON EACH PAVEMENT REHABILITATION STREET AND/OR WORK AREA. THE POSTING SHALL BE VERIFIED BY LAW ENFORCEMENT 72 HOURS PRIOR TO COMMENCING EACH PHASE OF WORK. IF THE INTENDED WORK DOES NOT COMMENCE WITHIN 24 HOURS OF THE SCHEDULED WORK, ALL "NO PARKING" SIGNS SHALL BE REMOVED FROM THE SITE OR AS DIRECTED BY THE ENGINEER AND A REVISED SCHEDULE SHALL BE SUBMITTED FOR REVISION.
- CONTRACTOR TO PROVIDE NOTICE TO PROPERTY OWNERS AND RESIDENTS PRIOR TO MOBILIZATION. ISSUE ALL ADVANCE NOTICES PER THE REQUIREMENTS IN THE SPECIFICATIONS AND DO NOT HAND OUT NOTIFICATION UNTIL IT IS APPROVED BY THE ENGINEER.
- ALL EXISTING STREET SURFACE FEATURES (MANHOLES, CLEAN-OUTS, MONUMENTS, STRIPING, PAVEMENT MARKINGS, ETC.) SHALL BE REFERENCED BY THE CONTRACTOR PRIOR TO START OF ANY WORK.
- TRAFFIC CONTROL SHALL BE SAFE AND PERFORMED IN ACCORDANCE WITH THE REQUIREMENTS OF THE LATEST "CA MANUAL OF UNIFORM TRAFFIC CONTROL".
- PRIOR TO PERFORMING WORK THAT MAY DAMAGE SURVEY MONUMENTS (DISK, SPIKE, SHINER OR OTHER), CONTRACTOR SHALL OBTAIN CLEARANCE FROM COUNTY SURVEYOR. REPLACE MONUMENT IN ACCORDANCE WITH THE SPECIAL PROVISIONS.

**POLLUTION CONTROL NOTES:**

- IF SIGNIFICANT SEDIMENT OR OTHER VISUAL SYMPTOMS OF IMPURITIES ARE NOTICED IN THE STORM WATER, CONTACT THE CITY ENGINEER IMMEDIATELY.
- CONTRACTOR IS RESPONSIBLE FOR INSPECTION AND RESTORATION OF ALL ASPECTS OF THIS PLAN. SEDIMENT ON SIDEWALKS AND GUTTERS SHALL BE REMOVED BY SHOVEL AND/OR BROOM AND PLACED IN STOCKPILES.
- ALL DUMPSTERS OR OTHER TRASH STORAGE ENCLOSURES SHALL BE UTILIZED SOLELY FOR NON-HAZARDOUS MATERIALS.
- ALL EMPLOYEES, CONTRACTORS, AND SUBCONTRACTORS ARE RESPONSIBLE FOR CONFORMING TO THE ELEMENTS SHOWN ON THIS PLAN OR RELATED DOCUMENTS.
- THE CONTRACTOR IS RESPONSIBLE FOR OBTAINING ALL PERMITS AND FILING ALL PLANS WITH RELATED AGENCIES ASSOCIATED WITH THEIR WORK. THIS SHALL INCLUDE, BUT NOT BE LIMITED TO, PERMITS FOR STORAGE OF HAZARDOUS MATERIALS, BUSINESS PLANS, PERMITS FOR STORAGE OF FLAMMABLE LIQUIDS, GRADING PERMITS, OR OTHER PLANS OR PERMITS REQUIRED BY MARIN COUNTY, THE CITY OF SAUSALITO, OR OTHER AGENCIES. ALL CONTRACTORS, OR SUBCONTRACTORS WORKING ON-SITE ARE INDIVIDUALLY RESPONSIBLE FOR OBTAINING AND SUBMITTING ANY BUSINESS PLANS OR PERMITS REQUIRED BY CITY, STATE OR LOCAL AGENCIES.
- CONTRACTOR SHALL LOCATE STORAGE, DELIVERY, OR WASH-OUT AREAS, TO SUIT THEIR OPERATIONS. CONTRACTOR TO MAINTAIN SECONDARY CONTAINMENT AS NECESSARY TO PROHIBIT POLLUTION AND TOXIC MATERIALS FROM ENTERING STORM DRAIN.
- CONTRACTOR SHALL UTILIZE SILT FILTERS DURING CONCRETE CONSTRUCTION NEAR EXISTING STORM DRAINAGE SYSTEM. AFTER COMPLETION OF THE PAVING, THE SILT FILTERS SHALL BE MODIFIED TO BURLAP SACKS FILLED WITH 3/4" DRAIN ROCK OR OTHER ACCEPTED BMP POSITIONED SURROUNDING EACH CATCH BASIN.

**EROSION CONTROL NOTES:**

- NO VEHICLES SHALL BE ALLOWED TO TRACK OR SPREAD SOIL FROM THE CONSTRUCTION AREAS ONTO EXISTING PAVED PUBLIC STREETS.
- THE EROSION AND SEDIMENT CONTROL MEASURES WILL BE OPERABLE FOR DURATION OF PROJECT. NO GRADING WILL OCCUR BETWEEN OCTOBER 1ST AND APRIL 15TH, UNLESS AUTHORIZED BY THE CITY ENGINEER.
- DURING THE RAINY SEASON, ALL PAVED AREAS WILL BE KEPT CLEAR OF EARTH MATERIAL AND DEBRIS. THE SITE WILL BE MAINTAINED SO THAT A MINIMUM OF SEDIMENT-LADEN RUNOFF ENTERS THE STORM DRAIN SYSTEM. THESE PLANS SHALL REMAIN IN EFFECT UNTIL THE TRACT IMPROVEMENTS ARE ACCEPTED BY THE CITY, AND ALL SLOPES ARE STABILIZED FROM EROSION.

**URBAN RUNOFF POLLUTION NOTES:**

- STABILIZE ALL DENUDE AREAS AND MAINTAIN EROSION CONTROL MEASURES CONTINUOUSLY FOR THE DURATION OF THE PROJECT.
- REMOVE SPOILS PROMPTLY AND AVOID STOCKPILING OF FILL MATERIALS WHEN RAIN IS FORECAST. IF RAIN THREATENS, STOCK-PILED SOILS AND OTHER MATERIALS SHALL BE TARPED, OR AS OTHERWISE DIRECTED BY CITY ENGINEER.
- STORE, HANDLE AND DISPOSE OF CONSTRUCTION MATERIALS AND WASTES SO AS TO PREVENT THEIR ENTRY TO THE STORM DRAIN SYSTEM. CONTRACTOR MUST NOT ALLOW NON-STORMWATER DISCHARGE TO ENTER SITE RUNOFF.
- USE FILTRATION OR OTHER MEASURES TO REMOVE SEDIMENT FROM DEWATERING EFFLUENT.
- NO CLEANING, FUELING OR MAINTAINING VEHICLES ON SITE SHALL BE PERMITTED IN ANY MANNER THAT ALLOWS DELETERIOUS MATERIALS TO ENTER CATCH BASINS OR TO ENTER SITE RUNOFF.
- CONTRACTOR TO RELOCATE CONCRETE WASHDOWN, VEHICLE STORAGE DELIVERY, AND NON HAZARDOUS WASTE AREAS AS NECESSARY TO FACILITATE THEIR OPERATION, PROMOTE POLLUTION CONTROL AND TO MINIMIZE PROJECT FOOTPRINT.

**PRESERVATION OF SURVEY MONUMENTS**

CONTRACTOR SHALL PRESERVE ALL SURVEY MONUMENTS WITHIN THE LIMITS OF WORK. MONUMENT(S) WITHIN THE LIMITS OF WORK SHALL BE REFERENCED, PRIOR TO WORK COMMENCING, BY A LICENSED LAND SURVEYOR AS REQUIRED BY SECTION 8771 OF THE BUSINESS AND PROFESSIONS CODE. CORNER RECORDS OF THIS WORK MUST BE SUBMITTED FOR FILING TO THE COUNTY SURVEYOR OF MARIN COUNTY PUBLIC WORKS DEPARTMENT, ENGINEERING DIVISION, SURVEY SECTION.

THE CONTRACTOR SHALL BE RESPONSIBLE FOR THE PRESERVATION OF EXISTING SURVEY MONUMENTS, BENCHMARKS, REFERENCE MARKS AND STAKES. SHOULD ANY SURVEY MONUMENTS, BENCHMARKS, REFERENCE POINTS, OR STAKES BE DAMAGED OR DESTROYED DURING THE PERFORMANCE OF THIS WORK, THE CONTRACTOR SHALL REPLACE SAID ITEMS PER CITY CONSTRUCTION STANDARDS IN ACCORDANCE WITH THE SPECIAL PROVISIONS AND CONTACT THE COUNTY, SURVEY SECTION, CHIEF OF PARTY FOR FINAL INSPECTION AND ACCEPTANCE OF THE WORK.

**SURVEY NOTES**

- DISTANCES SHOWN ARE IN FEET AND DECIMALS THEREOF.
- FIELD SURVEY WAS PERFORMED USING GPS EQUIPMENT TO ESTABLISH CONTROL AND CONVENTIONAL METHODS (TOTAL STATIONS) AT RAMP AND INTERSECTION LOCATIONS.
- CONTROL ESTABLISHED BY CALIFORNIA REAL TIME NETWORK (CRTN). HORIZONTAL DATUM IS CALIFORNIA STATE PLANE COORDINATES, NORTH AMERICAN DATUM OF 1983 (NAD83), ZONE 3, EPOCH 2015.5. VERTICAL DATUM IS NORTH AMERICAN VERTICAL DATUM OF 1988 PER CRTN.
- FIELD SURVEYS WERE PERFORMED IN JANUARY OF 2023 BY CSW/STUBER-STROEH ENGINEERING GROUP, INC. FOR ANY INQUIRIES, PLEASE CONTACT JOSH WOELBING, PLS AT JOSHW@CSWST2.COM (707) 479-5112.

**PROJECT STANDARD PLANS**

CALTRANS STANDARD PLANS, 2018

T13 TRAFFIC CONTROL SYSTEM FOR LANE CLOSURE ON TWO LANE CONVENTIONAL HIGHWAYS

**UNIFORM CONSTRUCTION STANDARDS (UCS) OF THE CITIES OF MARIN AND COUNTY OF MARIN, JULY 2018**

UCS DWG. NO. 105 CURB, GUTTER AND SIDEWALK DETAILS

**SURVEY CONTROL POINTS**

POINT NO.	NORTHING	EASTING	ELEVATION	DESCRIPTION
1	2142977.914	5984938.804	106.76	CP MN
3	2142999.862	5984939.387	106.34	CP MN WD RNR



**CSW | ST 2**

**CSW/Stuber-Stroeh Engineering Group, Inc.**  
504 Redwood Blvd Novato, CA 94947  
Tel: 415.883.9850 Fax: 415.883.9855

Civil Engineers  
Surveying & Mapping  
Land Planning  
Construction Management  
http://www.cswst2.com © 2021

Rev	Date	Description	Designed	Drawn	Checked
	08/31/23	BID SET	JBD	JBD	RJS

**WOODWARD AVENUE  
SEWER MAIN REALIGNMENT  
GENERAL NOTES,  
ABBREVIATIONS, & SYMBOLS  
SAUSALITO, CALIFORNIA**

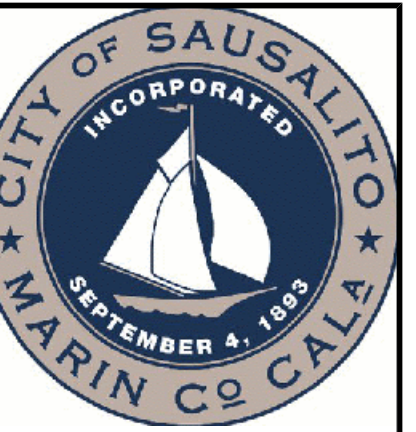
City of  
**Sausalito**  
County of  
**Marin**  
State of  
**California**

Prepared Under the Direction of:



Sheet  
**C1.01**  
Scale: As Shown  
Date: June 2, 2023  
Sheet Number: 2 OF 8

W:\proj\Drawings\Share\Proj\2022\2022071 Woodward Sewer\DWG\Sheet\C1.01 - GENERAL NOTES, ABBREVIATIONS, AND SYMBOLS.dwg 06/02/2023, 12:52 PM user: jls 1:3 9850



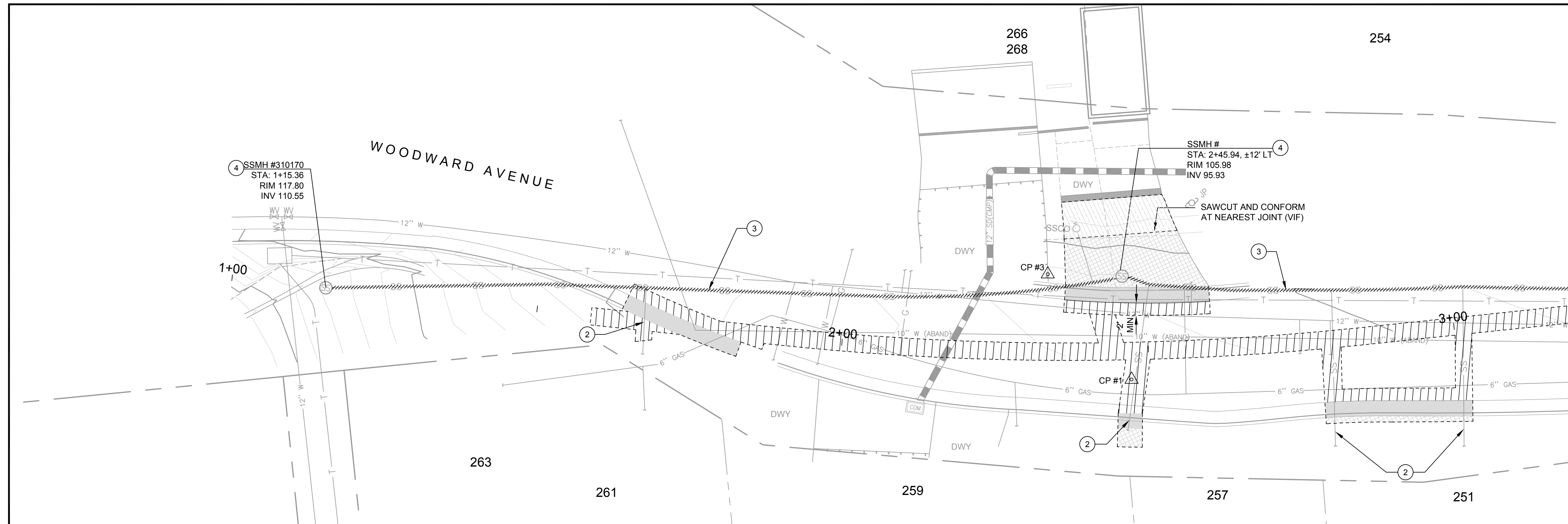
**CSW ST 2**

**CSW/Stuber-Stroeh Engineering Group, Inc.**

504 Redwood Blvd Novato, CA 94947 tel: 415.883.9850 fax: 415.883.9855

Civil Engineers  
Surveying & Mapping  
Land Planning  
Construction Management  
http://www.cswst2.com © 2021

Rev	Date	Description	Designed	Drawn	Checked
	08/31/23	BID SET	JBD	JBD	RJS



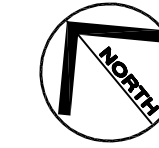
**PLAN VIEW**  
SCALE: 1" = 10'

**LEGEND**

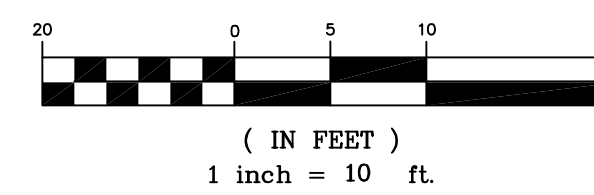
- REMOVE AND DISPOSE ASPHALT PAVEMENT
- REMOVE AND DISPOSE CURB AND GUTTER
- REMOVE AND DISPOSE CONCRETE PAVEMENT
- REVOCABLE ITEM - REMOVE AND DISPOSE DRIVEWAY CONCRETE PAVEMENT
- ABANDONED PIPE TO BE CAPPED AT ENDS AND FILLED WITH SLURRY (SEE DETAIL 4, SHEET C4.00)

**KEYNOTES**

- 1 REMOVE AND DISPOSE EX. SSRI. TO BE REPLACED
- 2 POT HOLE SANITARY SEWER LATERAL TO VERIFY SIZE, DEPTH, AND LOCATION
- 3 SANITARY SEWER LINE TO BE CAPPED, FILLED WITH SLURRY, AND ABANDONED (SEE DETAIL 4, SHEET C4.00)
- 4 SANITARY SEWER MANHOLE TO BE ABANDONED IN PLACE, REMOVE AND DIPOSE EX. COVER AND TOP RING, FILL VOID SPACE WITH SLURRY AND PAVE OVER TOP WITH CONCRETE PAVEMENT (SEE DETAIL 7, SHEET 8) OR NATIVE SOIL COMPACTED AT 90% R.C. AS APPROVED BY THE ENGINEER.

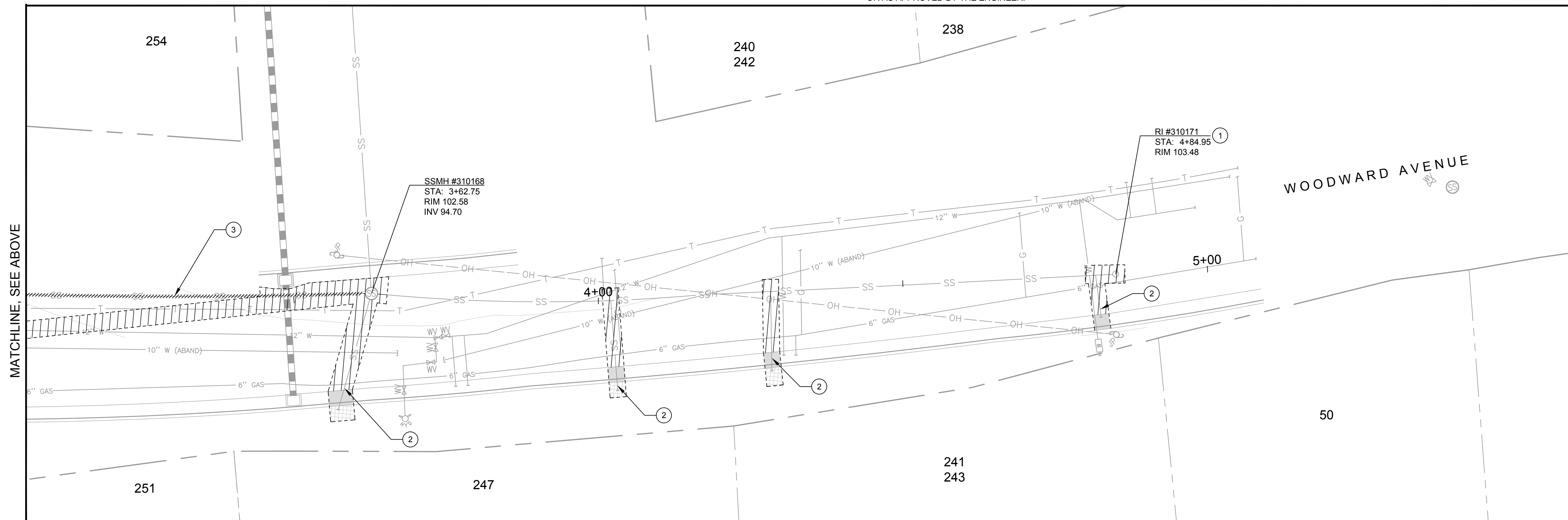


**GRAPHIC SCALE**



**GENERAL NOTE:**

1. CONTRACTOR SHALL POT HOLE TO VERIFY SIZE AND DEPTH OF EX UTILITIES AT ALL PROPOSED SEWER CROSSINGS
2. CONTRACTOR SHALL PROTECT IN PLACE EX UTILITIES
3. REMOVE CONCRETE FLATWORK, CURB AND GUTTER AT THE NEAREST JOINT OR AS APPROVED BY THE ENGINEER.



**PLAN VIEW**  
SCALE: 1" = 10'

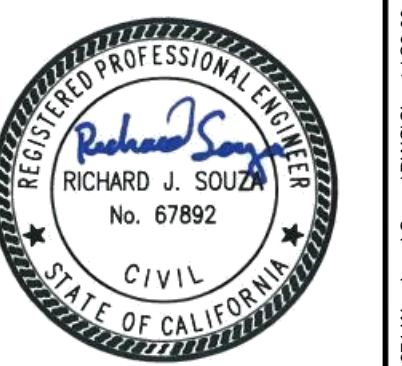
MATCHLINE, SEE ABOVE

MATCHLINE, SEE BELOW

**WOODWARD AVENUE  
SEWER MAIN REALIGNMENT  
DEMOLITION PLAN  
(STA 1+00 TO STA 5+00)  
SAUSALITO, CALIFORNIA**

City Of  
**Sausalito**  
County Of  
**Marin**  
State Of  
**California**

Prepared Under the Direction of:



Sheet

**C2.00**

Scale: 1" = 10'

Date: June 2, 2023

Sheet Number: 3 OF 8

\\proj\Drawings\Shared\Projects\2022\2023\Woodward Sewer\DWG\Sheet\C2.00 - DEMOLITION PLAN (STA 1+00 TO STA 5+00).dwg 08/31/2023 12:58 PM user: jls@cs

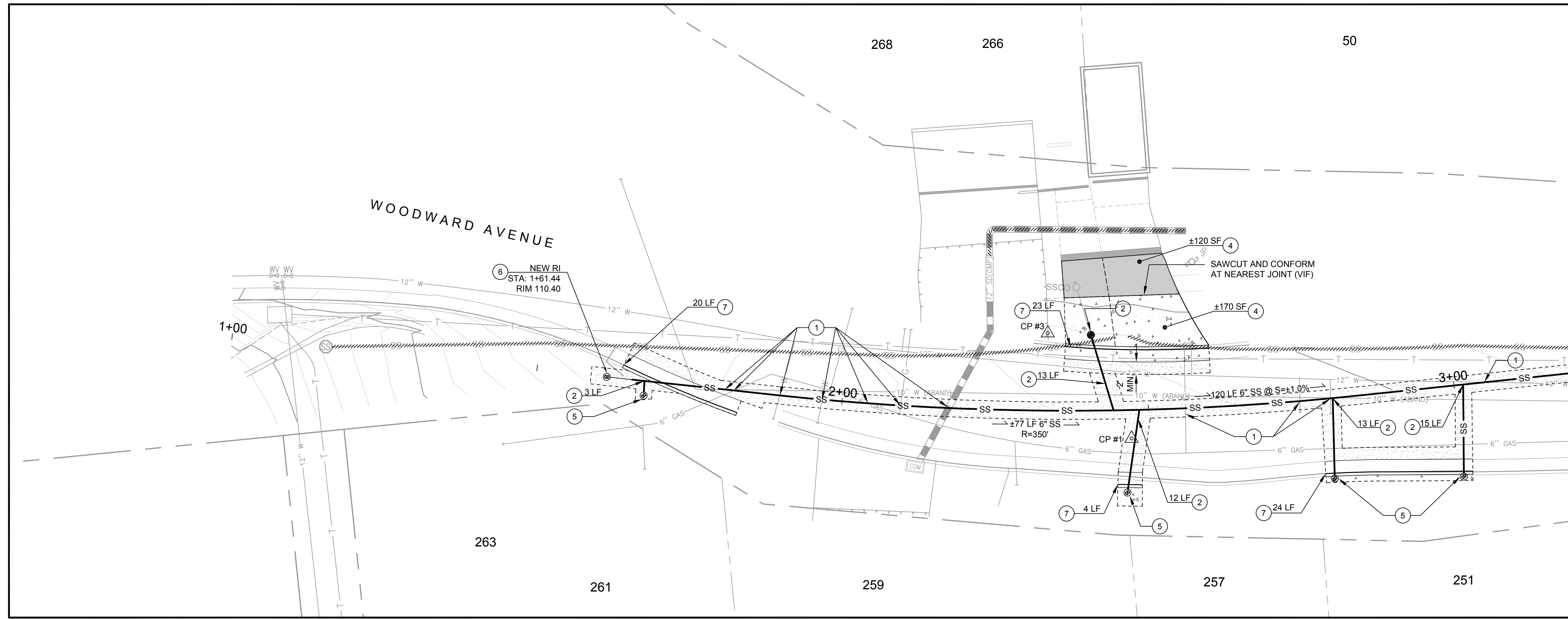


CSW ST 2

CSW/Stuber-Stroeh Engineering Group, Inc.

504 Redwood Blvd Novato, CA 94947

Revision table with columns: Rev, Date, Description, Designated, Drawn, Checked, RJS



MATCHLINE, SEE SHEET C2.01

LEGEND

- PAVEMENT RESTORATION PER MCSD SD4, SEE DETAIL 1, SHEET C4.00
TRAFFIC RATED CONCRETE PAVEMENT, SEE DETAIL 7, SHEET C4.01
REVOCABLE ITEM - TRAFFIC RATED CONCRETE PAVEMENT, SEE DETAIL 7, SHEET C4.01

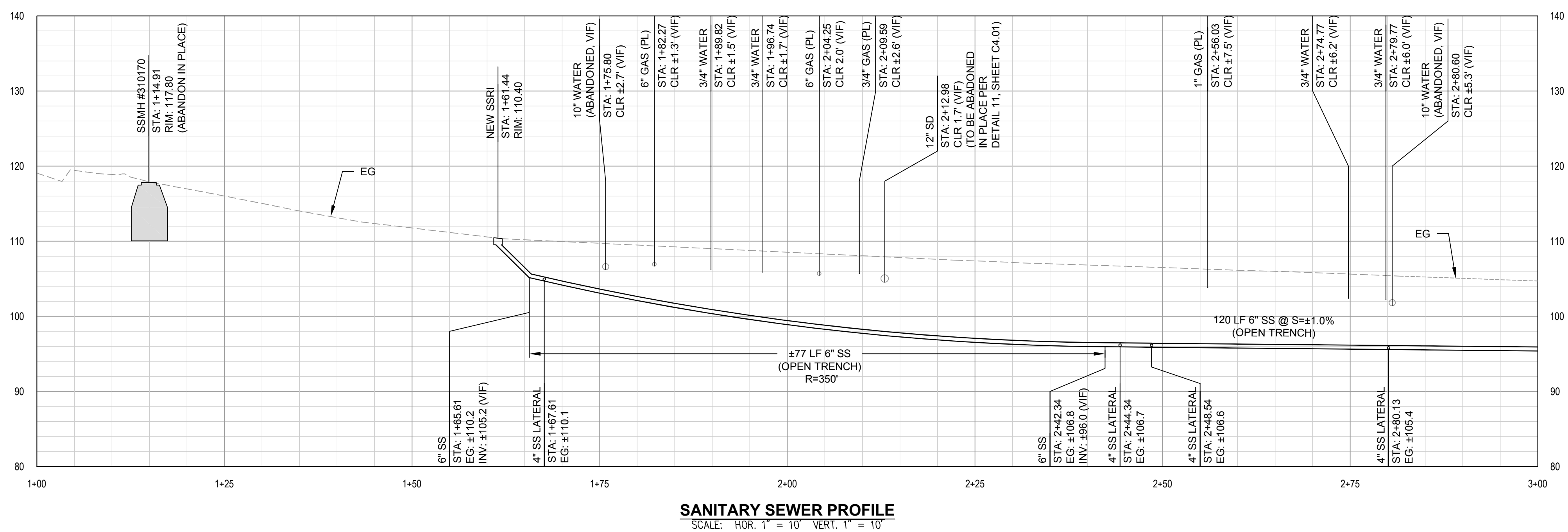
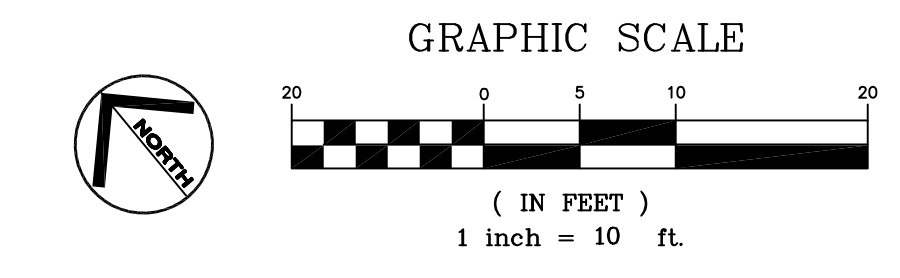
NOTES

- 1. SEWER MAIN CONSTRUCTION METHODS SHALL BE AS INDICATED IN PLAN (OPEN TRENCH/PIPEBURST) OR AS APPROVED BY THE ENGINEER.
2. SEWER LATERALS REPLACEMENTS SHALL BE OPEN TRENCH OR AS APPROVED BY THE ENGINEER.
3. ALL EXISTING STREETS DAMAGED DURING CONSTRUCTION SHALL BE REPAIRED IN CONFORMANCE WITH THE CITY'S STANDARD CONSTRUCTION PLANS AND SPECIFICATIONS AND TO THE SATISFACTION OF THE ENGINEER.

KEYNOTES

- 1 CONTRACTOR SHALL POTHOLE TO VERIFY SIZE AND DEPTH OF EX. UTILITY
2 NEW SS LATERAL PER DETAIL 5, SHEET C4.00
3 EXISTING SSMH REHABILITATION, INSTALL NEW LINER AND COATING FROM BENCH UP TO FRAME, NO WORK ON CHANNEL UNLESS DIRECTED OTHERWISE BY THE ENGINEER
4 RE-CONSTRUCT EX. DRIVEWAY, SAWCUT AT EX. JOINTS, MATCH EX. COLOR AND TEXTURE (VIF)
5 NEW STANDARD SSCO, SEE DETAIL 6, SHEET C4.00
6 NEW RODDING INLET PER MARIN COUNTY SANITARY DISTRICT SD 3, SEE DETAIL 9, SHEET C4.00
7 TYPE A CURB AND GUTTER PER UCS DWG 105, SEE DETAIL 9, SHEET C4.01
8 APPROXIMATE LOCATION OF PIPE BURST PIT

PLAN VIEW SCALE: 1" = 10'



SANITARY SEWER PROFILE SCALE: HOR. 1" = 10' VERT. 1" = 10'

WOODWARD AVENUE SEWER MAIN REALIGNMENT PLAN AND PROFILE (STA 1+00 TO STA 3+00) SAUSALITO, CALIFORNIA

City of Sausalito County of Marin State of California

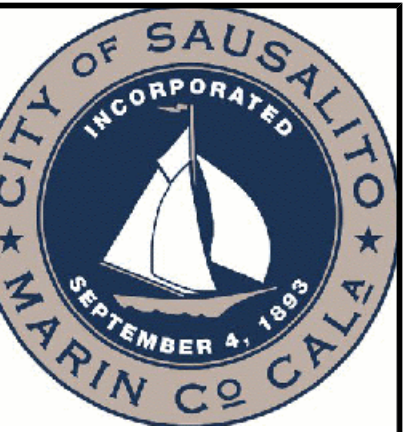
Prepared Under the Direction of:



Sheet C3.00

Scale: 1" = 10' Date: June 2, 2023 Sheet Number: 4 OF 8

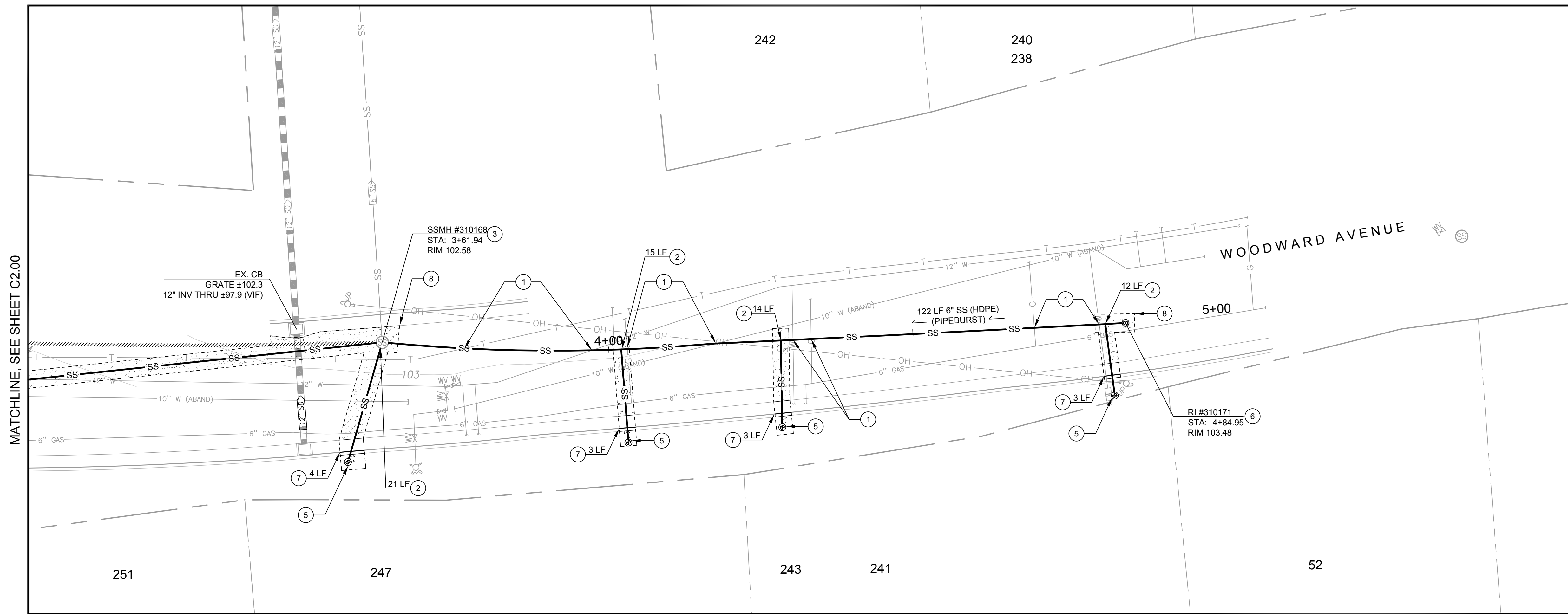
Vertical text on the right edge of the page.



CSW | ST 2

CSW/Stuber-Stroeh  
Engineering Group, Inc.  
504 Redwood Blvd  
Novato, CA 94947  
Tel: 415.883.9850  
Fax: 415.883.9835

Civil Engineers  
Surveying & Mapping  
Land Planning  
Construction Management  
http://www.cswst2.com © 2021



PLAN VIEW  
SCALE: 1" = 10'

LEGEND

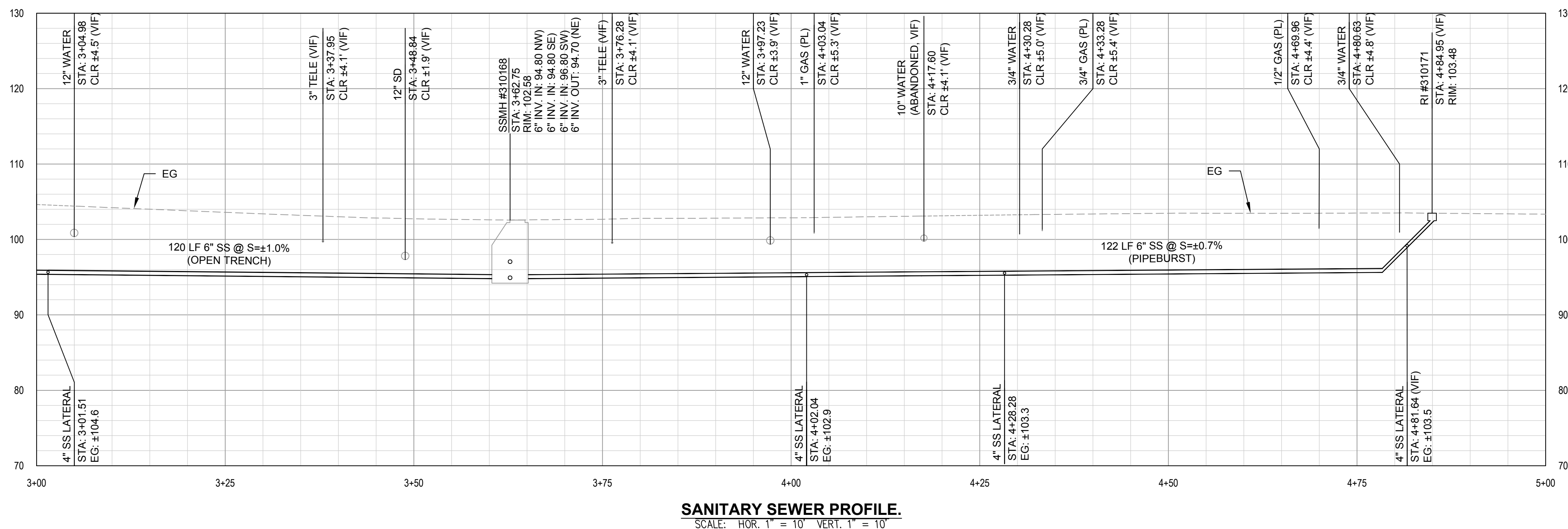
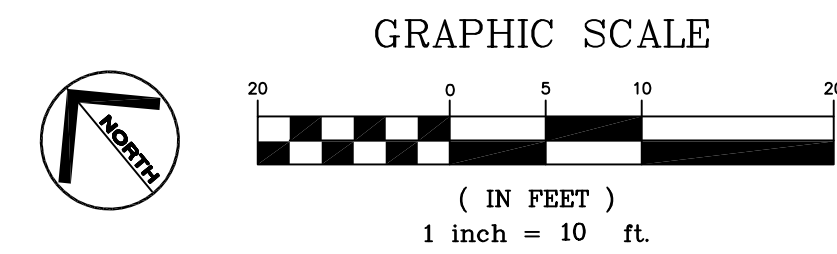
- PAVEMENT RESTORATION PER MCSD SD4, SEE DETAIL 1, SHEET C4.00
- TRAFFIC RATED CONCRETE PAVEMENT, SEE DETAIL 7, SHEET C4.01

NOTES

1. SEWER MAIN CONSTRUCTION METHODS SHALL BE AS INDICATED IN PLAN (OPEN TRENCH/PIPEBURST) OR AS APPROVED BY THE ENGINEER.
2. SEWER LATERALS REPLACEMENTS SHALL BE OPEN TRENCH OR AS APPROVED BY THE ENGINEER.
3. ALL EXISTING STREETS DAMAGED DURING CONSTRUCTION SHALL BE REPAIRED IN CONFORMANCE WITH THE CITY'S STANDARD CONSTRUCTION PLANS AND SPECIFICATIONS AND TO THE SATISFACTION OF THE ENGINEER.

KEYNOTES

- 1 CONTRACTOR SHALL POT HOLE TO VERIFY SIZE AND DEPTH OF EX. UTILITY
- 2 NEW SS LATERAL PER DETAIL 5, SHEET C4.00 (VERIFY IN FIELD SIZE AND INVERT)
- 3 EXISTING SSMH REHABILITATION. INSTALL NEW LINER AND COATING FROM BENCH UP TO FRAME, NO WORK ON CHANNEL UNLESS DIRECTED OTHERWISE BY THE ENGINEER
- 4 RE-CONSTRUCT EX. DRIVEWAY, SAWCUT AT EX. JOINTS, MATCH EX. COLOR AND TEXTURE (VIF)
- 5 NEW STANDARD SSSCO, SEE DETAIL 6, SHEET C4.00
- 6 NEW RODDING INLET PER MARIN COUNTY SANITARY DISTRICT SD 3, SEE DETAIL 9, SHEET C4.00
- 7 TYPE A CURB AND GUTTER PER UCS DWG 105, SEE DETAIL 9, SHEET C4.01
- 8 APPROXIMATE LOCATION OF PIPE BURST PIT



SANITARY SEWER PROFILE.  
SCALE: HOR. 1" = 10' VERT. 1" = 10'

Rev	Date	Description	Designed	Drawn	Checked
			JBD	JBD	RJS
			JBD	JBD	RJS

WOODWARD AVENUE  
SEWER MAIN REALIGNMENT  
PLAN AND PROFILE  
(STA 3+00 TO STA 5+00)  
SAUSALITO, CALIFORNIA

City Of  
Sausalito  
County Of  
Marin  
State Of  
California

Prepared Under the Direction of:



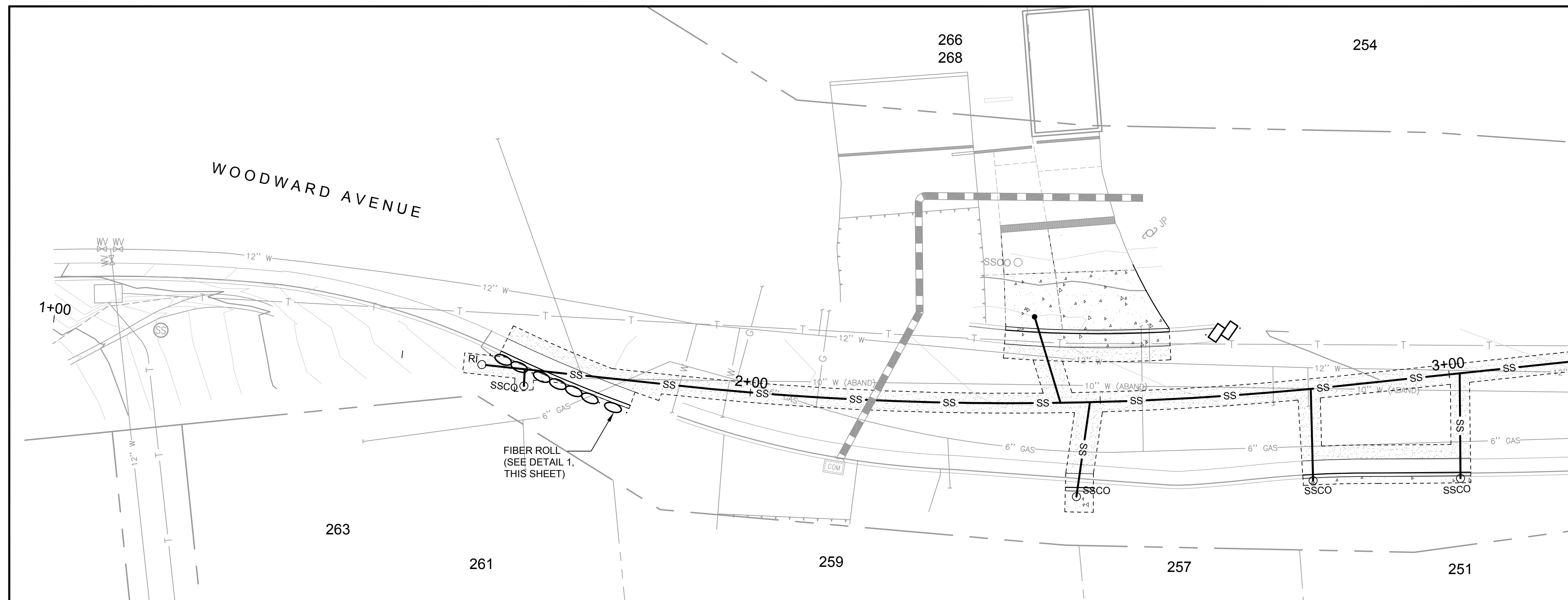
Sheet  
**C3.01**  
Scale: 1" = 10'  
Date: June 2, 2023  
Sheet Number: 5 OF 8

W:\proj\Drawings\Shared\Projects\2022\2021 Woodward Sewer\DWG\Sheet\C3.01 - PLAN AND PROFILE (STA 3+00 TO STA 5+00).dwg 08/31/23, 01:10 PM, user: 13.962

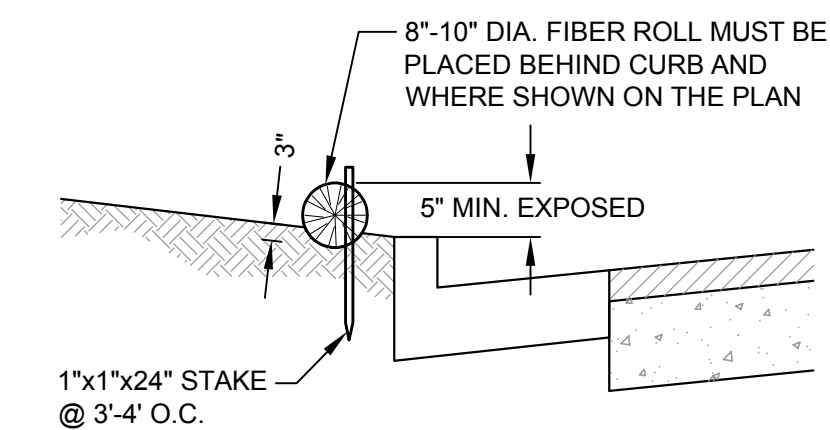




Rev	Date	Description	Drawn	Checked
	08/31/23	BID SET	JBD	RJS



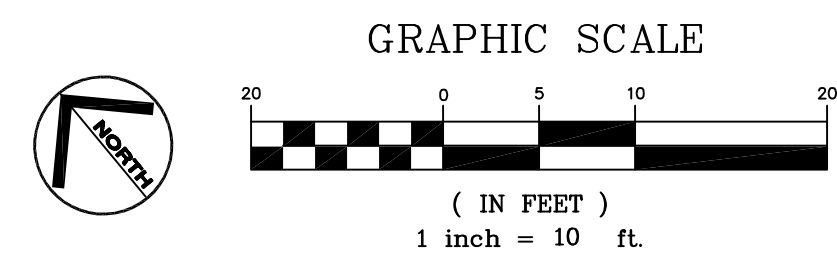
PLAN VIEW  
SCALE: 1" = 10'



NOTES

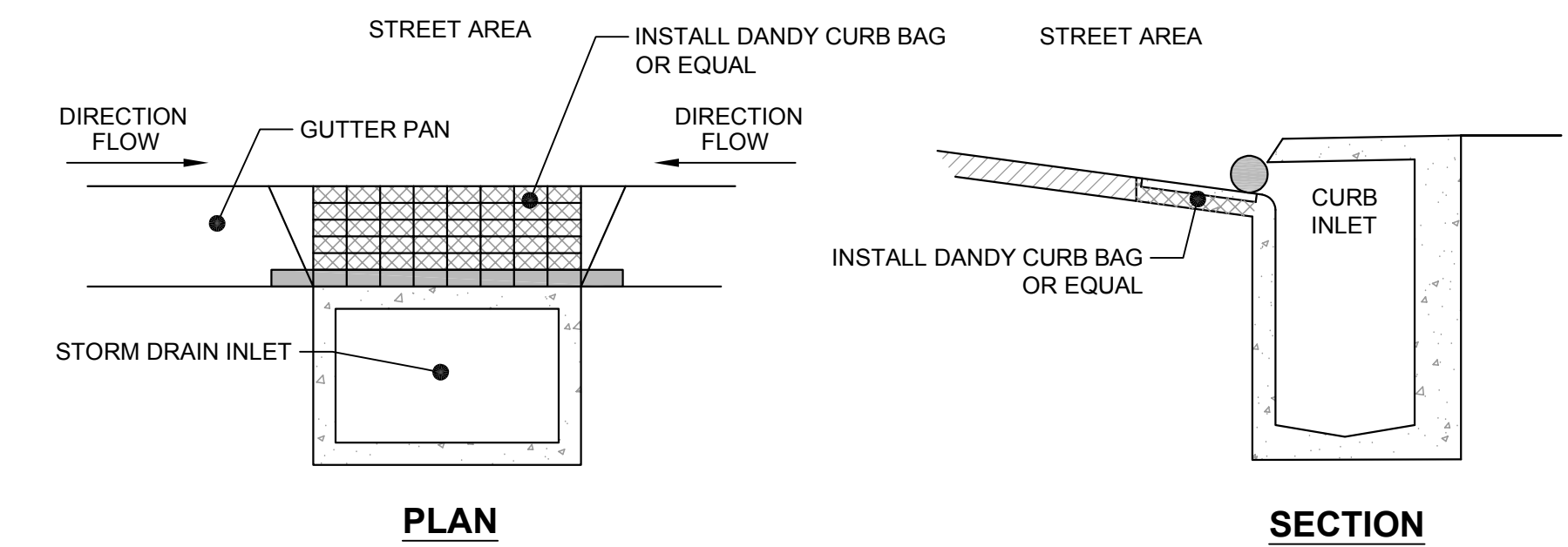
1. FIBER ROLLS TO BE LAID ALONG CONTOUR.

1 FIBER ROLL INSTALLATION DETAILS  
SCALE: NTS

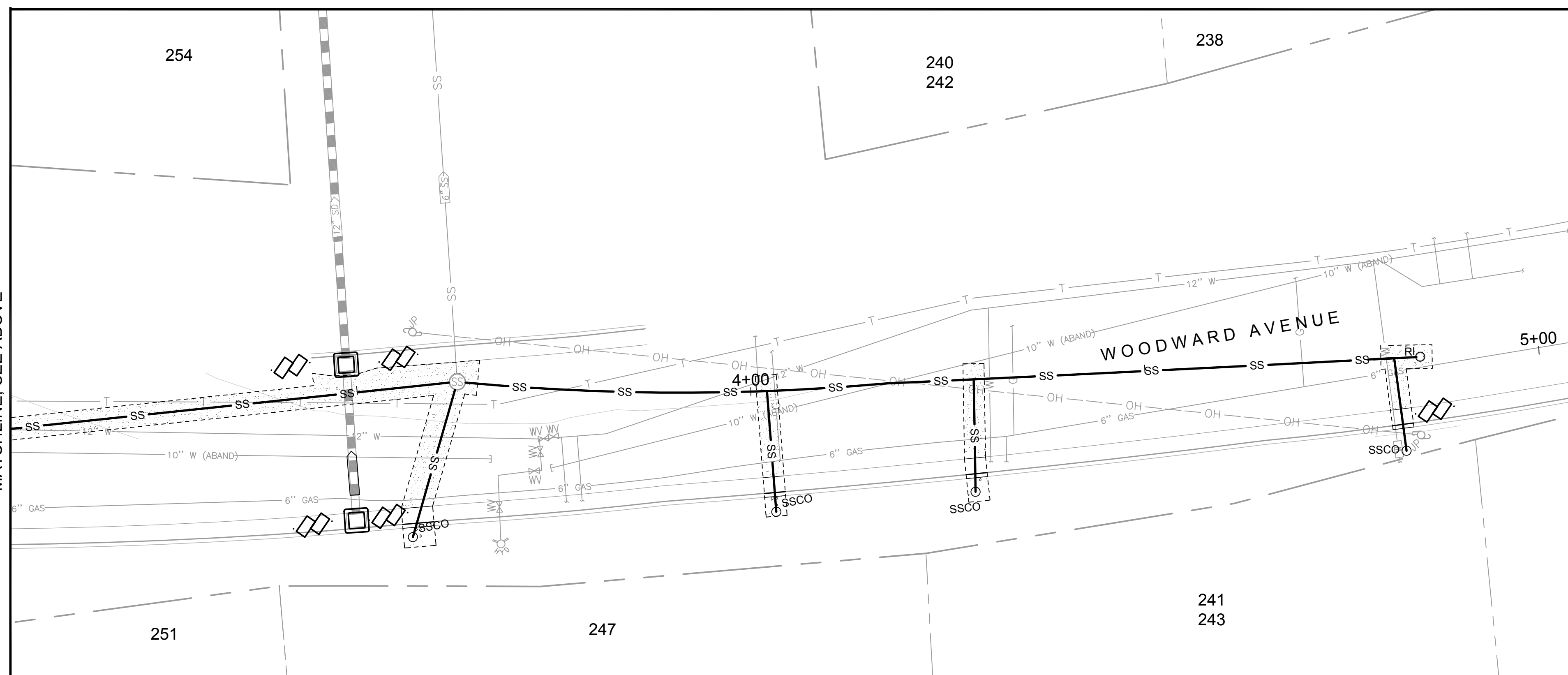


EROSION CONTROL LEGEND

- FIBER ROLL
- SAND/GRAVEL BAG BARRIER
- STORM INLET PROTECTION



2 INLET PROTECTION  
SCALE: NTS



PLAN VIEW  
SCALE: 1" = 10'

BMP	GENERAL DESCRIPTION	BMP	GENERAL DESCRIPTION
<b>EROSION CONTROL BMPS</b>		<b>GOOD HOUSEKEEPING BMPS</b>	
A	PRESERVE EXISTING VEGETATION EXISTING VEGETATION SHOULD BE PRESERVED AS MUCH AS POSSIBLE. CASQA: EC-2.	I	CONCRETE WASHOUTS CONSTRUCT A CONCRETE WASHOUT SITE PLACED AT LEAST 50 FEET AWAY FROM STORM DRAINS, WATERBODIES, OR OTHER DRAINAGES. IDEALLY, PLACE ADJACENT TO STABILIZED ENTRANCE. CLEAN AS NEEDED AND REMOVE AT END OF PROJECT. CASQA: WM-8.
B	SOIL COVER COVER ALL EXPOSED SOIL WITH STRAW MULCH AND TACKIFIER (OR EQUIVALENT). CASQA: EC-3, EC-5, EC-6, EC-7, EC-14, AND EC-16.	J	STOCKPILE MANAGEMENT COVER ALL STOCKPILES AND LANDSCAPE MATERIAL AND BERM PROPERLY WITH FIBER ROLLS OR SAND BAGS. KEEP BEHIND SILT FENCE, AWAY FROM WATERBODIES. AVOID USE OF PLASTIC SHEETING WHERE POSSIBLE TO KEEP PLASTIC FROM ENTERING WATERBODIES. CASQA: WM-3.
C	EROSION CONTROL BLANKETS OR EQUIVALENT INSTALL EROSION CONTROL: BLANKETS (OR EQUIVALENT) ON ANY DISTURBED SITE WITH 3:1 SLOPES OR STEEPER, KEYED INTO THE GROUND AT LEAST 3 INCHES. USE WILDLIFE-FRIENDLY BLANKETS MADE OF BIODEGRADABLE NATURAL MATERIALS. AVOID USING BLANKETS MADE WITH PLASTIC NETTING OR FIXED APERTURE NETTING. CASQA: EC-7.	K	HAZARDOUS MATERIAL MANAGEMENT HAZARDOUS MATERIALS MUST BE KEPT IN CLOSED CONTAINERS THAT ARE COVERED AND UTILIZE SECONDARY CONTAINMENT, NOT DIRECTLY ON SOIL. CASQA: WM-6.
D	REVEGETATION AREAS OF DISTURBED SOIL/VEGETATION SHOULD BE REVEGETATED AS SOON AS PRACTICAL. CASQA: EC-4.	L	SANITARY WASTE MANAGEMENT PLACE PORTABLE TOILETS NEAR STABILIZED SITE ENTRANCE, BEHIND THE CURB AND AWAY FROM GUTTERS, STORM DRAIN INLETS, AND WATERBODIES. ALL PORTABLE BATHROOMS SHOULD HAVE OVERFLOW PANTRY (MOST VENDORS PROVIDE THESE). CASQA: WM-9.
E	STABILIZED SITE ENTRANCE NOT APPLICABLE	M	EQUIPMENT AND VEHICLE MAINTENANCE PAVEMENT EQUIPMENT FLUID LEAKS ONTO GROUND BY PLACING DRIP PANS OR PLASTIC TARPS UNDER EQUIPMENT. CASQA: NS-8, NS-9, AND NS-10.
F	FIBER ROLLS (E.G. STRAW WATTLES) USE FIBER ROLLS ALONG CONTOURS OF SHORT SLOPES 3:1 OR FLATTER, KEYED INTO GROUND AT LEAST 3-INCHES DEEP (TYPICALLY 25 FEET APART). USE WILDLIFE-FRIENDLY FIBER ROLLS MADE OF BIODEGRADABLE NATURAL MATERIALS. AVOID USING FIBER ROLLS MADE WITH PLASTIC NETTING OR FIXED APERTURE NETTING. CASQA: SE-5.		
G	SILT FENCE INSTALL SILT FENCE ALONG CONTOURS AS SECONDARY MEASURE TO KEEP SEDIMENT ONSITE AND TO MINIMIZE VEHICLE AND FOOT TRAFFIC BEYOND LIMITS OF SITE DISTURBANCE. SILT FENCING MUST BE KEYED IN. CASQA: SE-1.		
H	DRAIN INLET PROTECTION USE PEA-GRAVEL BAGS, (OR SIMILAR PRODUCT) AROUND DRAIN INLETS LOCATED BOTH ONSITE AND IN GUTTER AS A LAST LINE OF DEFENSE. CASQA: NS-2.		

WOODWARD AVENUE  
SEWER MAIN REALIGNMENT  
EROSION CONTROL PLAN  
SAUSALITO, CALIFORNIA

City Of  
Sausalito  
County Of  
Marin  
State Of  
California

Prepared Under the Direction of:



Sheet  
**C5.00**  
Scale: 1" = 10'  
Date: June 2, 2023  
Sheet Number: 8 OF 8