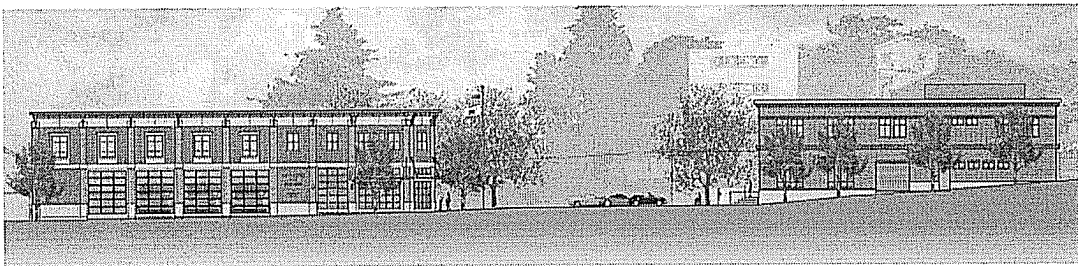


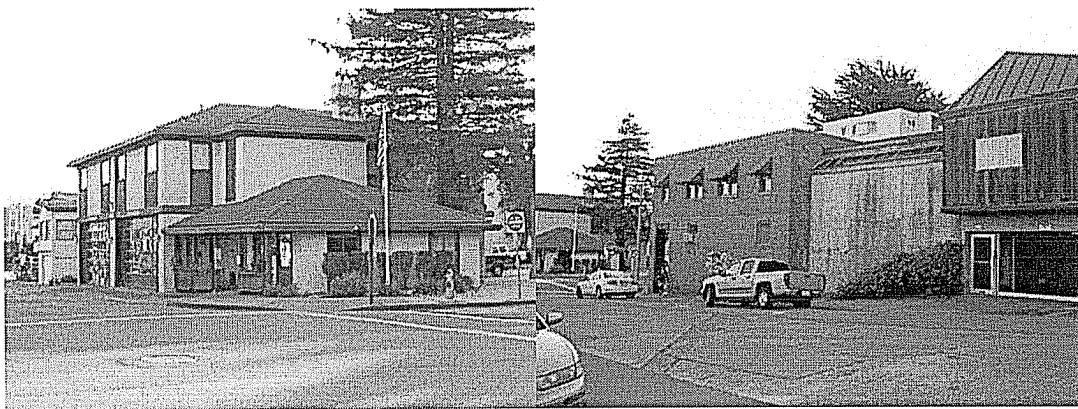
---

**City of Sausalito Public Safety Facilities**  
**Police Station 29 Caledonia Street**  
**Fire Station 333 Johnson Street**  
**Sausalito, CA**

**Monthly Report**  
**No. 3 February 2009**

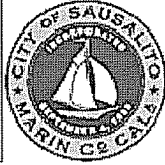


**Rendering of the new Buildings**



**Previous Fire Station and Police Station**

484  
2-24-09  
1

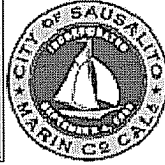
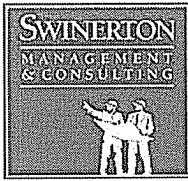


---

**City of Sausalito Public Safety Facilities**  
Police Station 29 Caledonia Street  
Fire Station 333 Johnson Street  
Sausalito, CA

## Table of Contents

1. **Project Data**
  - 1.1 Project Description
  - 1.2 Project Team
2. **Executive Summary**
3. **Key Project Issues**
4. **Project Schedule**
  - 4.1 Critical path Schedule
5. **Construction Contract and Budget**
6. **Progress Photos**



---

## City of Sausalito Public Safety Facilities

Police Station 29 Caledonia Street  
Fire Station 333 Johnson Street  
Sausalito, CA

### 1 PROJECT DATA

#### 1.1 Project Description

The Project is the Design and Construction of the Public Safety Facilities for the City of Sausalito. These Facilities are the Police and Fire Stations. These will be two separate buildings on two separate sites. The Police station will be located at 29 Caledonia St. and the Fire Station will be located at 333 Johnson St. The approximate square footage of the new fire station has been revised to 11,703 S.F. and the new police station revised to 8,371 S.F. Construction is scheduled to begin in October 2008. Current projection for completion is 14 months.

#### 1.2 Project Team

**Owner**

City of Sausalito  
Sausalito City Council  
Adam Politzer, City Manager  
Jonathon Goldman, Director of Public Works

**Architect**

Glass Architects  
Eric Glass, Principal

**Construction Manager**

Swinerton Management & Consulting  
John Baker, Project Executive  
Loren Umbertis, Project Manager

**General Contractor**

Alten Construction  
Bob Alten, President  
Andrew Nortz, Project Manager  
Paul Fitzgerald, Superintendent

**Civil Engineer - Survey**

BKF Engineers

**Geotechnical Engineers**

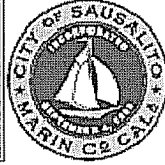
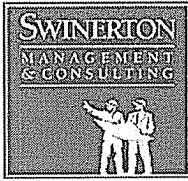
Consolidated Engineering

**Environmental Engineer**

GPI Environmental Management

**Initial Study/Mitigated Negative Declaration**

Pacific Municipal Consultants



---

## City of Sausalito Public Safety Facilities

Police Station 29 Caledonia Street

Fire Station 333 Johnson Street

Sausalito, CA

### 2 EXECUTIVE SUMMARY

Notice to Proceed was issued to Alten Construction on October 9<sup>th</sup>, 2008, for the Public Safety Facilities Project. The contract project duration is 420 calendar days. As of this report, February 6<sup>th</sup>, the project is approximately 4 months underway.

January was a very active month. Good weather during the month kept the project proceeding at a good pace. There were to delays to the Project due to adverse weather.

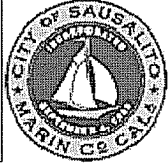
At the Fire Department site, the Tubex Pile installation started at the beginning of January and almost 90 piles were installed by mid-January. The piles did not rely upon pounding for their installation but were drilled piers, and therefore the potential disturbance to the community was limited to the sound of generators rather than the incessant pounding associated with other piles. From mid-January until February, Alten began marking and digging trenches for the underground utilities. Excavation of the Fire Department Elevator pit also began at the end of January.

At the Police Department site, work has continued on the Temporary Shoring walls. Along the south wall, the soldier piles and lagging is 95% completed. Along the western wall, the existing retaining wall was removed in additional phases and is proceeding with little issue. The small slide that occurred along the southwestern portion of the retaining wall has been stabilized by the installation of additional compacted soil and the temporary retaining wall. Discussions with the affected neighbor have been on-going to determine the final permanent scope of work to be installed along that area.

### 3 KEY PROJECT ISSUES

As mentioned in previous Reports, the most significant issue to date was the discovery of the underground tanks. These tanks have been entirely removed and the pit has now been filled with clean fill. We are currently working with our Environmental Engineer, AEW, and the Regional Water Quality Control Board to obtain a Site Closure Report for the site as additional testing that was conducted indicated that the groundwater and the soil were below Environmental Screening Levels.

Due to the favorable weather conditions, the Project has continued at a good pace. The Project experienced no weather delays or delays caused by any additional unforeseen conditions during the month of January. However, Alten has issued notice to the City of Sausalito that they will



---

## City of Sausalito Public Safety Facilities

Police Station 29 Caledonia Street

Fire Station 333 Johnson Street

Sausalito, CA

request delay and extension of the overall schedule due to the discovery of the tanks and issues with the temporary shoring wall. SMC will review the Critical Path Schedule to review the request for delay and to confirm the full impact of any delays. At this time, it is likely that at least one month of delay may be warranted by the discovery of the tanks.

As to costs associated with the tanks, it is anticipated that the final numbers may be close to \$180K for removal of soil and tanks, environmental engineer, permits and delay to sub-contractors and Alten Construction. SMC will review any Change Order Requests for validity as they are submitted.

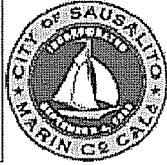
The Police Station site is proceeding well. The Temporary Shoring wall is approximately 95% complete on the southern wall and 75% complete along the eastern wall. During discussions with the Architect, the Contractor and the City, it was agreed upon to proceed with the new retaining walls of the Police Department being placed with shotcrete vs. cast-in-place. This change will have zero cost impact to the City, but has the potential of accelerating the overall schedule.

We are also reviewing changes that would affect the Booking Area of the Police Department. The change of scope, should the change be approved, will provide the Police Department the infrastructure necessary to make the Booking Area into a more secure part of the Building, including increases in the fire rating of the rooms involved. The Project Team is currently reviewing the full ramifications of the change to determine if it will be in the best interest of the City and Police Department to proceed with the change.

The City is currently working with the neighbor that had a small portion of a fence and landscaping slide. Unfortunately, due to the location of the fence slightly encroaching upon City Property, it need to be brought down entirely. The City is working with the affected neighbor to provide new fencing in accordance with our responsibilities.

At the Fire Department site, Alten is laying out and trenching for the underground utilities. They began excavation of the elevator pit. During that time, we had our archaeologist on-site reviewing the excavation. He did not find any reason that we could not continue excavating. We also asked our Environmental Engineer to come and test the excavated soil at the pit area, as the location is in close proximity to the location of the discovered tanks. Upon receiving the test results of the soil, we will act accordingly.

As long as weather holds out, we do not expect any potential delays over the next month.



---

**City of Sausalito Public Safety Facilities**  
**Police Station 29 Caledonia Street**  
**Fire Station 333 Johnson Street**  
**Sausalito, CA**

**4 PROJECT SCHEDULE**

Critical Path Schedule from Alten Construction attached.

Activity ID	Activity Description	Orig Dur	Early Start	Early Finish	Total Float	2008												2010											
						O	N	D	J	F	M	A	M	J	J	A	S	O	N	D	J	F	M	A	M				
<b>MILESTONES</b>																													
00100	NOTICE TO PROCEED	0	09OCT08A			CONTRACT DURATION																							
00200	CONTRACT DURATION	420	09OCT08A	06JAN10	-35																								
<b>SUBMITTALS/PROCUREMENT</b>																													
01500	PREPARE / SUBMIT PILING	17	09OCT08A	05NOV08A		PREPARE / SUBMIT PILING																							
01600	REVIEW / APPROVE PILING	5	06NOV08A	14NOV08A		REVIEW / APPROVE PILING																							
01700	PROCURE / DELIVER PILING (INCL IND. PROGRAM)	10	17NOV08A	30DEC08A		PROCURE / DELIVER PILING (INCL IND. PROGRAM)																							
01720	PREPARE / SUBMIT SHORING	13	09OCT08A	27OCT08A		PREPARE / SUBMIT SHORING																							
01730	REVIEW / APPROVE SHORING	19	28OCT08A	21NOV08A		REVIEW / APPROVE SHORING																							
01800	PREPARE / SUBMIT INTEGRAL COLOR CONCRETE PAVING	40	09OCT08A	16DEC08A		PREPARE / SUBMIT INTEGRAL COLOR CONCRETE PAVING																							
01900	REVIEW / APPROVE INTEGRAL COLOR CONCRETE PAVING	8	17DEC08A	23JAN09	86	REVIEW / APPROVE INTEGRAL COLOR CONCRETE PAVING																							
02000	PROCURE / DELIVER COLOR CONC PAVING MATERIALS	10	26JAN09	06FEB09	86	PROCURE / DELIVER COLOR CONC PAVING MATERIALS																							
02100	PREPARE / SUBMIT PLANTING AND IRRIGATION	60	09OCT08A	03NOV08A		PREPARE / SUBMIT PLANTING AND IRRIGATION																							
02200	REVIEW / APPROVE PLANTING AND IRRIGATION	8	04NOV08A	18NOV08A		REVIEW / APPROVE PLANTING AND IRRIGATION																							
02300	PROCURE / DELIVER PLANTING AND IRRIGATION	20	19NOV08A	20JAN09	210	PROCURE / DELIVER PLANTING AND IRRIGATION																							
02400	PREPARE / SUBMIT CONCRETE REINFORCEMENT	20	09OCT08A	20JAN09	-35	PREPARE / SUBMIT CONCRETE REINFORCEMENT																							
02500	REVIEW / APPROVE CONCRETE REINFORCEMENT	8	21JAN09	30JAN09	-35	REVIEW / APPROVE CONCRETE REINFORCEMENT																							
02600	PROCURE / DELIVER CONCRETE REINFORCEMENT	5	02FEB09	06FEB09	-35	PROCURE / DELIVER CONCRETE REINFORCEMENT																							
02700	PREPARE / SUBMIT CONCRETE MIX DESIGNS	20	09OCT08A	05JAN09A		PREPARE / SUBMIT CONCRETE MIX DESIGNS																							
02800	REVIEW / APPROVE CONCRETE MIX DESIGNS	8	06JAN09A	15JAN09	-15	REVIEW / APPROVE CONCRETE MIX DESIGNS																							
03000	PREPARE / SUBMIT VAPOR CONTROL	30	09OCT08A	30OCT08A		PREPARE / SUBMIT VAPOR CONTROL																							
03100	REVIEW / APPROVE VAPOR CONTROL	8	31OCT08A	10NOV08A		REVIEW / APPROVE VAPOR CONTROL																							
03200	PROCURE / DELIVER VAPOR CONTROL (AVAILABLE)	5	11NOV08A	17NOV08A		PROCURE / DELIVER VAPOR CONTROL (AVAILABLE)																							
03300	PREPARE / SUBMIT CMU	30	09OCT08A	01DEC08A		PREPARE / SUBMIT CMU																							
03400	REVIEW / APPROVE CMU	8	02DEC08A	23DEC08A		REVIEW / APPROVE CMU																							
03500	PROCURE / DELIVER CMU	10	24DEC08A	27JAN09	24	PROCURE / DELIVER CMU																							
03600	PREPARE / SUBMIT CAST STONE MASONRY	60	09OCT08A	11FEB09	98	PREPARE / SUBMIT CAST STONE MASONRY																							
03700	REVIEW / APPROVE CAST STONE MASONRY	8	12FEB09	23FEB09	98	REVIEW / APPROVE CAST STONE MASONRY																							
03800	PROCURE / DELIVER CAST STONE MASONRY	40	24FEB09	20APR09	98	PROCURE / DELIVER CAST STONE MASONRY																							
03900	PREPARE / SUBMIT STRUCTURAL STEEL	27	09OCT08A	14NOV08A		PREPARE / SUBMIT STRUCTURAL STEEL																							
04000	REVIEW / APPROVE STRUCTURAL STEEL	8	17NOV08A	23DEC08A		REVIEW / APPROVE STRUCTURAL STEEL																							
04100	PROCURE / DELIVER STRUCTURAL STEEL	45	13JAN09	18MAR09	22	PROCURE / DELIVER STRUCTURAL STEEL																							
04500	PREPARE / SUBMIT STEEL DECKING	35	09OCT08A	14NOV08A		PREPARE / SUBMIT STEEL DECKING																							
04520	REVIEW / RETURN STEEL DECKING	8	17NOV08A	24DEC08A		REVIEW / RETURN STEEL DECKING																							
04540	REVISE / RESUBMIT STEEL DECKING	10	29DEC08A	15JAN09	16	REVISE / RESUBMIT STEEL DECKING																							
04600	REVIEW / APPROVE STEEL DECKING	8	16JAN09	28JAN09	16	REVIEW / APPROVE STEEL DECKING																							

Sheet 1 of 15

**ALTEN CONSTRUCTION, INC.**

**SAUSOLITO PUBLIC SAFETY BUILDINGS**  
01/13/08 UPDATE  
ALL ACTIVITIES

Start Date	09OCT08	Early Bar
Finish Date	12APR10	Progress Bar
Data Date	13JAN09	Critical Activity
Run Date	15JAN09 21:39	

484  
7

© Primavera Systems, Inc.

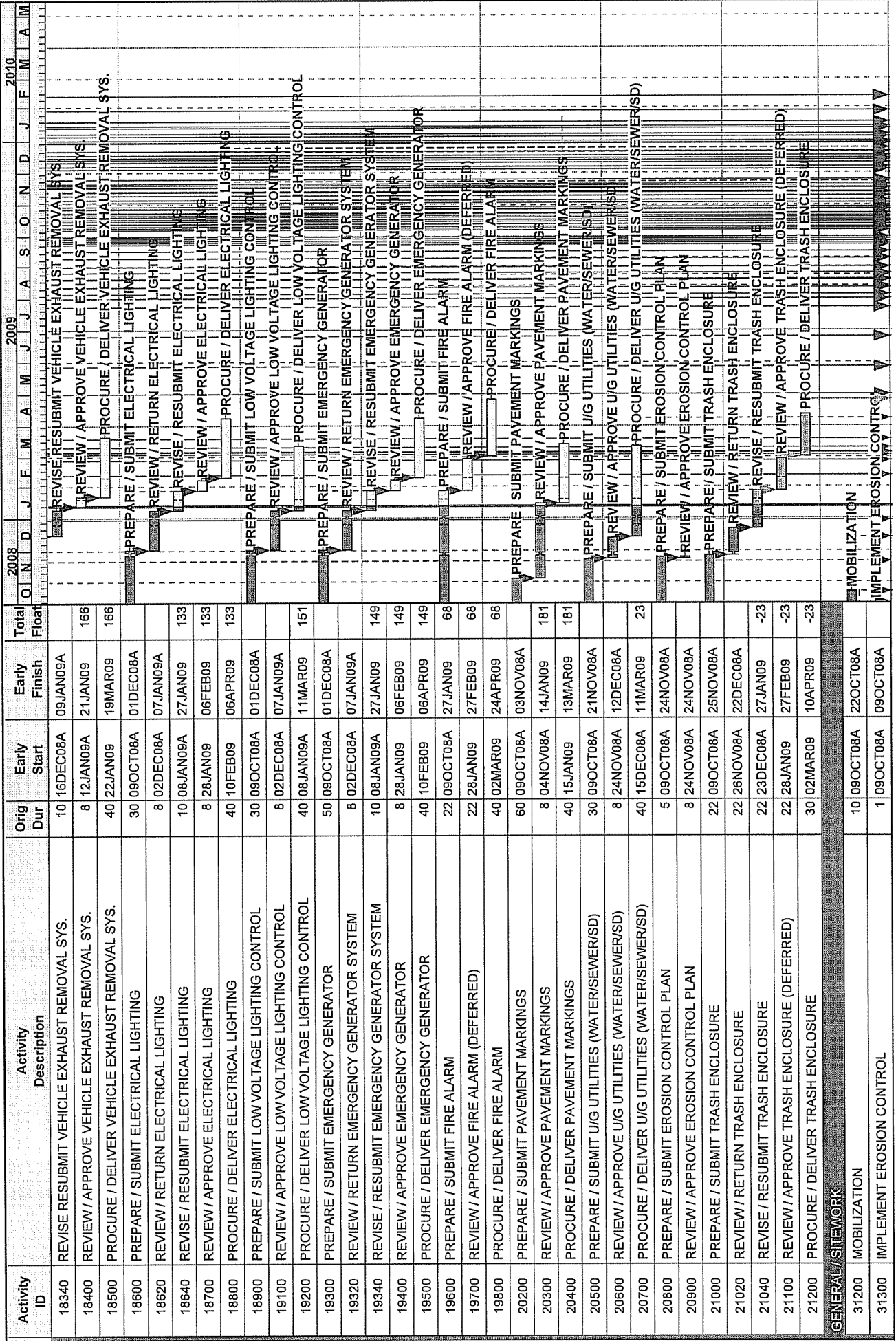












2008      2009      2010  
O N D J F M A M J J A S O N D J F M A M

2010

Date      Revision      Checked      Approved

SHEET 6 OF 15

ALTEN CONSTRUCTION, INC.

SAUSOLITO PUBLIC SAFETY BUILDINGS  
01/13/08 UPDATE  
ALL ACTIVITIES

SO2A

Start Date      09OCT08  
Finish Date      12APR10  
Data Date      13JAN09  
Run Date      15JAN09 21:39

Legend: Early Bar (white), Progress Bar (grey), Critical Activity (black)

Primavera Systems, Inc.



Activity ID	Activity Description	Orig Dur	Early Start	Early Finish	Total Float	2008	2009	2010	
31350	ID/DISCUSS ADDED UG ELECT WK FOR HIGH VOLT LINES	1	23OCT08A	27OCT08A					
31360	OWNER DIRECTION TO PERFORM UG ELECT WORK	1	28OCT08A	10NOV08A					
31370	REPUBLIC PROVIDE PRICING FOR UG ELECT WORK	1	11NOV08A	17NOV08A					
31380	LESLIE PROVIDE PRICING FOR ABOVE GR. ELECT WK	1	11NOV08A	21NOV08A					
31390	SCHEDULE REPUBLIC TO START WORK	8	24NOV08A	05DEC08A					
31395	REPUBLIC (CITY SUB) RESCHEDULE ITS WORK	10	08DEC08A	12DEC08A					
31400	REMOVE / STORE (E) STREET LIGHT	1	15DEC08A	15DEC08A					
31500	DEMO (E) SIDEWALK	10	10OCT08A	23OCT08A					
31600	END OF 2008-2009 WINTER SEASON - RESUME SITEWORK	0		30MAR09*	5				
31700	DEMO (E) CURBS	5	31MAR09	06APR09	5				
31800	TRENCH / UTILITIES ACROSS JOHNSON & CALEDONIA	10	07APR09	20APR09	5				
31900	PLACE SUBGRADE AT DRIVEWAYS / SIDEWALKS	10	21APR09	04MAY09	5				
31950	INSTALL IRRIGATION MAINS	7	05MAY09	13MAY09	5				
32000	PLACE TRANSORMER PAD / EMERG. GEN. PAD	4	14MAY09	19MAY09	5				
32100	PLACE CURB & GUTTER	10	20MAY09	03JUN09	5				
32200	PLACE SITE CONCRETE	15	23JUL09	12AUG09	-29				
32300	INSTALL TRANSFORMER	1	13AUG09	13AUG09	55				
32350	PG&E INSTALL PRIMARY TO TRANSFORMER	5	14AUG09	20AUG09	55				
32370	INSTALL SECONDARY TO SWITCHGEAR	5	21AUG09	27AUG09	55				
32380	INSPECT / PERMANENT POWER	1	28AUG09	28AUG09	55				
32400	INSTALL GENERATOR	8	13AUG09	24AUG09	59				
32500	STIPING	2	29JAN10	01FEB10	-41				
38000	INSTALL IRRIGATION / LANDSCAPING	10	19JAN10	01FEB10	-41				
38100	SITWORK SUBSTANTIAL COMPLETION	0		01FEB10	-41				
<b>POLICE STATION STRUCTURE</b>									
41500	SURVEY BUILDING LINES	8	09OCT08A	20OCT08A					
41600	SELECTIVE CONCRETE DEMO	20	09OCT08A	05NOV08A					
41700	PARTIAL DEMO OF BACK RETAINING WALL	5	21NOV08A	26NOV08A					
41710	GEOTECH-SOILS REPT WRONG-EAST NEIGHB NOT BEDROCK	1	25NOV08A	25NOV08A					
41715	ENGINEER'S REVIEW OF DIRECTION	1	26NOV08A	26NOV08A					
41720	ALTEN DISCUSS DIRECTION WITH ENGINEER CARL	1	29NOV08A	29NOV08A					
41725	ENGINEER SUGGESTS UNDERPINNING EAST NEIGHBOR	1	01DEC08A	01DEC08A					
41730	ENGINEER VISITS SITE TO REVIEW / MEET W GEOTECH	1	02DEC08A	02DEC08A					
41735	GEOTECH DIRECTION TO EXCAVATE TO BEDROCK	1	03DEC08A	03DEC08A					
41740	EXCAVATE FOR UNDERPINNING - NO ROCK AT 15'	5	03DEC08A	09DEC08A					

Start Date: 09OCT08  
 Finish Date: 12APR10  
 Data Date: 13JAN09  
 Run Date: 15JAN09 21:39

SO2A

ALTEN CONSTRUCTION, INC.

SAUSOLITO PUBLIC SAFETY BUILDINGS

01/13/08 UPDATE

ALL ACTIVITIES

Sheet 7 of 15

Date	Revision	Checked	Approved

484

© Primavera Systems, Inc.

Activity ID	Activity Description	Orig Dur	Early Start	Early Finish	Total Float	2008	2009	2010													
41745	CONSULT WITH GEOTECH RE: BLDG FOUNDN / BASEROCK	1	10DEC08A	10DEC08A		O	N	A	M	J	J	A	S	O	N	D	J	F	M	A	M
41750	INSTALL STEEL CAGES FOR UNDERPINNING PIERS	1	10DEC08A	10DEC08A																	
41755	PLACE UNDERPINNING PIERS FOR EAST NEIGHBOR	1	10DEC08A	10DEC08A																	
41760	EXCAVATE FOR UNDERPINNING AT SEQUENCE 2	4	11DEC08A	11DEC08A																	
41765	INSTALL STEEL CAGES FOR UNDERPIN PIERS SEQ. 2	1	12DEC08A	12DEC08A																	
41770	PLACE UNDERPIN PIERS FOR EAST NEIGHBOR SEQ. 2	1	12DEC08A	12DEC08A																	
41780	DISCUSS SOIL CONDITIONS - SURE DIRECT REDESIGN	20	08DEC08A	08DEC08A																	
41782	REDESIGN SHORING SYSTEM BASED ON UNFOR. COND	20	09DEC08A	23DEC08A																	
41784	INTERMITTENT TIEBACK WORK DURING UNFOR. ISSUES	1	15DEC08A	24DEC08A																	
41786	PROCURE SOLDIER BEAMS PER REDESIGN	0	24DEC08A	05JAN09A																	
41788	INSTALL SOLDIER BEAMS PER SHORING REDESIGN	1	06JAN09A	12JAN09A																	
41790	INSTALL LAGGING PER SHORING REDESIGN	10	13JAN09	27JAN09	-49																
41800	DRILL / INSTALL TIEBACKS	10	13JAN09	27JAN09	-49																
41900	COMPLETE DEMOLITION	10	28JAN09	11FEB09	-49																
42000	CUT BUILDING PADS / ROUGH GRADE	5	12FEB09	18FEB09	-49																
42300	EXCAVATE LINE E / LINE 1 FOOTINGS	4	19FEB09	24FEB09	-49																
42350	INSTALL SLEEVES FOR U/G UTILITIES	4	19FEB09	24FEB09	-47																
42400	LEAN FILL CONCRETE LINE E / LINE 1	1	25FEB09	25FEB09	-47																
42500	REBAR LINE E / LINE 1 FOOTINGS	5	26FEB09	04MAR09	-47																
42600	PLACE LINE E / LINE 1 FOOTINGS	1	05MAR09	05MAR09	-47																
42700	FORMWORK / WATERPROOFING LINE E / LINE 1 WALLS	15	06MAR09	26MAR09	-47																
42800	REBAR LINE E / LINE 1 WALLS	5	24MAR09	30MAR09	-47																
42900	SHOTCRETE LINE E / LINE 1 WALLS	1	31MAR09	31MAR09	-47																
43000	EXCAVATE DEEP FTGS	7	25FEB09	05MAR09	-49																
43100	PLACE LEAN FILL	2	06MAR09	09MAR09	-49																
43200	REBAR DEEP FTGS	7	10MAR09	18MAR09	-49																
43300	PLACE DEEP FTGS	1	19MAR09	19MAR09	-49																
43400	DRILL / INSTALL ELEVATOR RAM	4	20MAR09	25MAR09	-27																
43500	FORM / REBAR / PLACE ELEVATOR PIT SLAB / WALLS	10	20MAR09	02APR09	-49																
43600	EXCAVATE REMAINING FOOTINGS	5	03APR09	09APR09	-49																
43700	PLACE LEAN FILL AT REMAINING FOOTINGS	3	10APR09	14APR09	-49																
43800	REBAR REMAINING FOOTINGS	5	15APR09	21APR09	-49																
43900	INSTALL ANCHOR BOLTS AT REMAINING FOOTINGS	2	22APR09	23APR09	-49																
44000	PLACE REMAINING FOOTINGS	1	24APR09	24APR09	-49																
44100	SET COLUMNS / BEAMS AT 4, 5, 9	10	27APR09	08MAY09	-49																

Start Date	09OCT08	SO2A
Finish Date	12APR10	
Data Date	13JAN09	
Run Date	15JAN09 21:39	
	<input type="checkbox"/> Early Bar <input type="checkbox"/> Progress Bar <input type="checkbox"/> Critical Activity	
ALTEN CONSTRUCTION, INC. SAUSOLITO PUBLIC SAFETY BUILDINGS 01/13/08 UPDATE ALL ACTIVITIES	Sheet 8 of 15 Date Revision Checked Approved	Primavera Systems, Inc.

Activity ID	Activity Description	Orig Dur	Early Start	Early Finish	Total Float	2008	2009	2010	
44200	FORM 1 SIDE INTERIOR WALLS	20	11MAY09	08JUN09	-49				
44300	REBAR INTERIOR WALLS	20	18MAY09	15JUN09	-49				
44400	INSTALL TEMPLATES / EMBEDS AT INTERIOR WALLS	4	10JUN09	15JUN09	-49				
44500	SCOTCRETE INTERIOR WALLS	5	16JUN09	22JUN09	-49				
44550	STRIP INTERIOR WALLS	3	23JUN09	25JUN09	-49				
44600	ROCK / SAND / VAPOR BARRIER	5	26JUN09	02JUL09	-49				
44700	FORM SLAB ON GRADE	8	06JUL09	15JUL09	-49				
44800	REBAR SLAB ON GRADE	5	10JUL09	16JUL09	-49				
44900	SET SCREEDS	5	15JUL09	21JUL09	-49				
45000	INSTALL EMBEDS / ANCHOR BOLTS	3	17JUL09	21JUL09	-49				
45100	PLACE SLAB ON GRADE	1	22JUL09	22JUL09	-49				
45200	ERECT STRUCTURAL STEEL / STAIRS / LAY PAN DECK	25	23JUL09	26AUG09	-49				
45300	WELD DECKING POLICE STATION	10	27AUG09	10SEP09	-49				
45400	EDGE FORM LEVEL 2	7	11SEP09	21SEP09	-49				
45500	INSTALL REBAR LEVEL 2	7	11SEP09	21SEP09	-49				
45600	PLACE LEVEL 2 CONCRETE	1	22SEP09	22SEP09	-47				
45700	STRIP EDGE FORM LEVEL 2	2	23SEP09	24SEP09	-47				
45800	EDGE FORM ROOF	7	22SEP09	30SEP09	-49				
45900	INSTALL REBAR ROOF	7	22SEP09	30SEP09	-49				
46000	PLACE ROOF CONCRETE	1	01OCT09	01OCT09	-49				
46100	STRIP EDGE FORM ROOF	2	02OCT09	05OCT09	-49				
<b>POLICE STATION EXTERIOR</b>									
51200	EXTERIOR FRAMING LEVEL 1	12	25SEP09	12OCT09	-41				
51300	EXTERIOR FRAMING LEVEL 2	12	06OCT09	21OCT09	-46				
51400	SCAFFOLD FIRE STATION	5	25SEP09	01OCT09	-36				
51500	EXTERIOR SHEATHING LEVEL 1	5	09OCT09	15OCT09	-41				
51550	INSTALL FLASHINGS LEVEL 1	4	14OCT09	19OCT09	-41				
51600	EXTERIOR SHEATHING LEVEL 2	5	20OCT09	26OCT09	-46				
51700	INSTALL FLASHINGS LEVEL 2	4	23OCT09	28OCT09	-46				
51800	INSTALL STOREFRONTS / WINDOWS LEVEL 1	10	20OCT09	02NOV09	-39				
51900	INSTALL ROLL-UP DOORS LEVEL 1	6	16OCT09	23OCT09	-33				
52000	INSTALL STOREFRONTS / WINDOWS LEVEL 2	10	29OCT09	11NOV09	-46				
52100	LATH / PAPER EXTERIOR	12	20OCT09	09NOV09	-41				
52200	SCRATCH / BROWN STUCCO	15	28OCT09	17NOV09	-41				
52300	CURE SCRATCH / BROWN STUCCO	5	18NOV09	24NOV09	-41				

Start Date: 09OCT08  
 Finish Date: 12APR10  
 Data Date: 13JAN09  
 Run Date: 15JAN09 21:39

Sheet 9 of 15

ALDEN CONSTRUCTION, INC.

SAUSOLITO PUBLIC SAFETY BUILDINGS  
 01/13/08 UPDATE  
 ALL ACTIVITIES

Legend:

- Early Bar
- Progress Bar
- Critical Activity

Date	Revision	Checked	Approved

© Primavera Systems, Inc.

		2008							2009							2010							
		Q	O	N	D	J	F	M	A	M	J	J	A	S	O	N	D	J	F	M	A	M	
52500	WATERPROOFING AT BRICK VENEER LOCATIONS																						
52600	INSTALL CAST STONE																						
52700	INSTALL BRICK VENEER																						
53000	REMOVE SCAFFOLDING																						
53100	INSTALL EXTERIOR CANOPIES																						
53200	INSTALL CAST METAL SIGNAGE																						
53250	INSTALL HANDRAILS																						
53300	INSTALL RIGID ROOF INSULATION																						
53400	INSTALL ROOFING / FLASHING																						
53500	BUILDING DRIED-IN																						
53600	INSTALL ROOFTOP EQUIPMENT / PIPING																						
53650	INSTALL ROOF SCREENS																						
53670	INSTALL UNIT SKYLIGHTS																						
53700	INSTALL PATIO HARDWOOD DECKING AT ROOFS																						
<b>POLICE STATION INTERIOR</b>																							
61200	LAYOUT / INSTALL HANGERS LEVEL 1																						
61300	INSTALL SPRINKLER ROUGH-IN LEVEL 1																						
61400	LAYOUT / INSTALL HANGERS LEVEL 2																						
61500	INSTALL SPRINKLER ROUGH-IN LEVEL 2																						
61600	INSTALL MEP MAINS LEVEL 1																						
61700	INSTALL MEP MAINS LEVEL 2																						
61800	INTERIOR FRAMING / DOOR FRAMES LEVEL 1																						
62000	INTERIOR FRAMING / DOOR FRAMES LEVEL 2																						
62100	IN-WALL MEP ROUGH-IN LEVEL 1																						
62200	IN-WALL MEP ROUGH-IN LEVEL 2																						
62300	INSULATION LEVEL 1																						
62400	INSULATION LEVEL 2																						
62500	INTERIOR DRYWALL / TAPE / FINISH LEVEL 1																						
62550	INSTALL BULLET RESISTIVE CONSTRUCTION																						
62600	INTERIOR DRYWALL / TAPE / FINISH LEVEL 2																						
62700	PAINT LEVEL 1																						
62800	PAINT LEVEL 2																						
62900	INSTALL CEILING GRID LEVEL 1																						
63000	INSTALL CEILING GRID LEVEL 2																						
63100	INSTALL MEP AT ACOUSTICAL CEILINGS / TRIM LEVEL 1																						

Date	Revision	Checked	Approved

Sheet 10 of 15

ALTEN CONSTRUCTION, INC.

SAUSOLITO PUBLIC SAFETY BUILDINGS

01/13/08 UPDATE

ALL ACTIVITIES

SO2A

Start Date 09OCT08

Finish Date 12APR10

Data Date 13JAN09

Run Date 15JAN09 21:39

Legend:

- Early Bar
- Progress Bar
- Critical Activity

484

16



Activity ID	Activity Description	Orig Dur	Early Start	Early Finish	Total Float	2008	2009	2010
63200	INSTALL MEP AT ACOUSTICAL CEILINGS / TRIM LEVEL 2	8	24DEC09	07JAN10	-49			
63300	INSTALL CEILING TILE LEVEL 1	3	05JAN10	07JAN10	-47			
63400	INSTALL CEILING TILE LEVEL 2	3	08JAN10	12JAN10	-49			
63500	INSTALL WAINSCOT PANELING LEVEL 2	3	13JAN10	15JAN10	-48			
63600	INSTALL CERAMIC TILE WALLS / FLOOR LEVEL 1	4	17DEC09	22DEC09	-22			
63700	INSTALL CERAMIC TILE WALLS / FLOOR LEVEL 2	12	22DEC09	08JAN10	-33			
63800	INSTALL PLUMBING FIXTURES LEVEL 1	4	23DEC09	29DEC09	-22			
63900	INSTALL PLUMBING FIXTURES LEVEL 2	6	11JAN10	18JAN10	-33			
64000	INSTALL TOILET PARTITIONS / ACCESSORIES LEVEL 1	2	30DEC09	31DEC09	-22			
64100	INSTALL TOILET PARTITIONS / ACCESSORIES LEVEL 2	2	19JAN10	20JAN10	-33			
64300	INSTALL LOCKERS LEVEL 2	2	22DEC09	23DEC09	-33			
64400	INSTALL CASEWORK LEVEL 1	5	08JAN10	14JAN10	-47			
64500	INSTALL CASEWORK LEVEL 2	3	13JAN10	15JAN10	-49			
64600	INSTALL KITCHEN EQPT LEVEL 2	1	18JAN10	18JAN10	-49			
64700	INSTALL DECORATIVE WALL PANELING LEVEL 1	3	22DEC09	24DEC09	-44			
64800	INSTALL DECORATIVE METAL RAILING SYSTEM	5	28DEC09	04JAN10	-44			
64900	INSTALL FRP LEVEL 1	1	17DEC09	17DEC09	-34			
64950	INSTALL FRP LEVEL 2	1	22DEC09	22DEC09	-32			
65000	INSTALL FLOORING LEVEL 1	8	05JAN10	14JAN10	-44			
65100	INSTALL FLOORING LEVEL 2	8	19JAN10	28JAN10	-49			
65200	INSTALL DOORS & HARDWARE LEVEL 1	5	15JAN10	21JAN10	-44			
65300	INSTALL DOORS & HARDWARE LEVEL 2	5	29JAN10	04FEB10	-49			
65500	INSTALL INTERIOR SIGNAGE	2	29JAN10	01FEB10	-41			
65520	INSTALL PROJECTION SCREEN	1	15JAN10	15JAN10	-30			
65540	INSTALL MARKERBOARD	1	15JAN10	15JAN10	-30			
65590	INSTALL FIRE EXTINGUISHERS / CABINETS	1	22DEC09	22DEC09	-14			
65600	INSTALL ELEVATOR SHAFTWALLS	10	06NOV09	19NOV09	-43			
65700	INSTALL ELEVATOR GUIDERAILS	15	20NOV09	14DEC09	-43			
65800	INSTALL ELEVATOR CAR	15	15DEC09	06JAN10	-43			
65900	INSTALL ELEVATOR FRONTS	10	07JAN10	20JAN10	-43			
66000	ELEVATOR ADJUSTMENT / TESTING	5	21JAN10	27JAN10	-43			
66100	ELEVATOR INSPECTION	5	28JAN10	03FEB10	-43			
66200	MEP TESTING / BALANCING	10	29JAN10	11FEB10	-49			
66300	LIFE SAFETY TESTING / SIGN-OFF	10	29JAN10	11FEB10	-49			
68000	POLICE STATION SUBSTANTIAL COMPLETION	0		11FEB10	-49			

Start Date: 09OCT08  
 Finish Date: 12APR10  
 Data Date: 13JAN09  
 Run Date: 15JAN09 21:39

ISO24  
 Legend:  
 Early Bar  
 Progress Bar  
 Critical Activity

Sheet 11 of 15  
 ALTEN CONSTRUCTION, INC.  
 SAUSOLITO PUBLIC SAFETY BUILDINGS  
 01/13/08 UPDATE  
 ALL ACTIVITIES

Revision: \_\_\_\_\_  
 Checked: \_\_\_\_\_  
 Approved: \_\_\_\_\_

Date: \_\_\_\_\_  
 Date: \_\_\_\_\_  
 Date: \_\_\_\_\_  
 Date: \_\_\_\_\_

© Primavera Systems, Inc.

Activity ID	Activity Description	Orig Dur	Early Start	Early Finish	Total Float	2008	2009	2010
71500	SURVERY BUILDING LINES	10	09OCT08A	22OCT08A				
71520	ROUGH GRADE FIRE STATION SITE	5	23OCT08A	29OCT08A				
71530	FUEL TANKS DISCOVERED - STOP WORK	1	29OCT08A	29OCT08A				
71540	TANK REMOVAL / SOIL TESTING BY CITY	17	30OCT08A	21NOV08A				
71550	DIRECTION TO OVEREX SOIL GIVEN TO ALTEN	1	21NOV08A	21NOV08A				
71560	SCHEDULE / PERFORM OVEREXCAVATION / BACKFILL PIT	4	24NOV08A	01DEC08A				
71570	TESTING OF SPOILS	5	02DEC08A	08DEC08A				
71580	OFFHAUL SPOILS TO HAZ MAT DUMPSITES PER TESTING	4	16DEC08A	18DEC08A				
71590	REDO ROUGH GRADING / IMPORT ADDED SOIL	5	15DEC08A	19DEC08A				
71592	SOIL TOO WET FOR COMPACTION DUE TO RAIN ON 12/21	1	22DEC08A	22DEC08A				
71593	RAIN DAYS 12/23-12/24	2	23DEC08A	24DEC08A				
71595	SURVEY / LAYOUT FOR PILES	2	29DEC08A	30DEC08A				
71600	DRIVE / CUT PILES	20	31DEC08A	30JAN09	-27			
71700	CLEANUP / REGRADE	2	02FEB09	03FEB09	-27			
71800	EXCAVATE FTGS / PILECAPS	5	04FEB09	11FEB09	-27			
71850	PLACE UTILITY SLEEVES	2	04FEB09	05FEB09	-24			
71900	REBAR FTGS / PILECAPS	10	12FEB09	25FEB09	-27			
71950	INSTALL EMBEDS / ANCHOR BOLTS	3	26FEB09	02MAR09	-27			
72000	PLACE FTGS / PILECAPS (INCL. TRASH ENCLOSURE)	1	03MAR09	03MAR09	-27			
72050	DRILL / INSTALL ELEVATOR RAM	4	04MAR09	09MAR09	-21			
72100	FORM / REBAR / PLACE ELEVATOR PIT SLAB / WALLS	10	10MAR09	23MAR09	1			
72150	SET COLUMNS / BEAMS AT GL 3, 4, 8, 9	10	04MAR09	17MAR09	-27			
72200	FORM 1 SIDE WALLS	20	18MAR09	14APR09	-27			
72300	REBAR WALLS	20	25MAR09	21APR09	-27			
72350	INSTALL TEMPLATES / EMBEDS	4	16APR09	21APR09	-27			
72400	SCOTCRETE WALLS	5	22APR09	28APR09	-27			
72450	STRIP WALLS	2	29APR09	30APR09	-27			
72500	INSTALL CMU WALLS (INCL. TRASH ENCLOSURE)	15	10MAR09	24APR09	-23			
72600	INSTALL UNDERGROUND PLUMBING	10	04MAR09	17MAR09	-5			
72700	INSTALL UNDERSLAB ELECTRICAL	15	11MAR09	31MAR09	-5			
72750	COMPLETE IN-SLAB MEP	3	01MAY09	05MAY09	-25			
72800	ROCK / SAND / VAPOR BARRIER	5	01MAY09	07MAY09	-27			
72850	FORM SLAB ON GRADE	8	08MAY09	19MAY09	-27			
72900	REBAR SLAB ON GRADE	5	14MAY09	20MAY09	-27			

Start Date: 09OCT08  
 Finish Date: 12APR10  
 Data Date: 13JAN09  
 Run Date: 15JAN09 21:39

ISO2A

Legend:  
 Early Bar: [Dotted Box]  
 Progress Bar: [Horizontal Lines Box]  
 Critical Activity: [Thick Border Box]

ALTEN CONSTRUCTION, INC.

SAUSOLITO PUBLIC SAFETY BUILDINGS  
 01/13/08 UPDATE  
 ALL ACTIVITIES

Sheet 12 of 15

Date: \_\_\_\_\_  
 Revision: \_\_\_\_\_  
 Checked: \_\_\_\_\_  
 Approved: \_\_\_\_\_

18  
 104

Activity ID	Activity Description	Orig Dur	Early Start	Early Finish	Total Float	2008	2009	2010
73000	SET SCREEDS	5	19MAY09	26MAY09	-27			
73100	INSTALL EMBEDS / ANCHOR BOLTS	3	21MAY09	26MAY09	-27			
73200	PLACE SLAB ON GRADE	1	27MAY09	27MAY09	-27			
73300	ERECT STEEL FIRE STATION / STAIRS / LAY PAN DECK	30	28MAY09	09JUL09	-27			
73400	WELD DECKING FIRE STATION	10	02JUL09	16JUL09	-27			
73500	EDGE FORM LEVEL 2	7	17JUL09	27JUL09	-27			
73600	INSTALL REBAR LEVEL 2	7	17JUL09	27JUL09	-27			
73700	PLACE LEVEL 2 CONCRETE	1	28JUL09	28JUL09	-27			
73800	STRIP EDGE FORM LEVEL 2	2	29JUL09	30JUL09	-27			
74000	EDGE FORM ROOF	7	28JUL09	05AUG09	-15			
74100	INSTALL REBAR ROOF	7	28JUL09	05AUG09	-15			
74200	PLACE ROOF CONCRETE	1	06AUG09	06AUG09	-15			
74300	STRIP EDGE FORM ROOF	2	07AUG09	10AUG09	-15			
<b>FIRE STATION EXTERIOR</b>								
81200	EXTERIOR FRAMING LEVEL 1	15	31JUL09	20AUG09	-25			
81300	EXTERIOR FRAMING LEVEL 2	15	11AUG09	31AUG09	-15			
81400	SCAFFOLD FIRE STATION	5	13AUG09	19AUG09	-29			
81500	EXTERIOR SHEATHING LEVEL 1	7	20AUG09	28AUG09	-29			
81600	EXTERIOR SHEATHING LEVEL 2	7	25AUG09	02SEP09	-15			
81640	INSTALL FLASHINGS LEVEL 2	4	01SEP09	04SEP09	-15			
81660	INSTALL STOREFRONTS LEVEL 1	12	31AUG09	16SEP09	-10			
81670	INSTALL ROLL-UP DOORS LEVEL 1	6	31AUG09	08SEP09	-4			
81680	INSTALL STOREFRONTS / WINDOWS LEVEL 2	12	08SEP09	23SEP09	-15			
81700	LATH / PAPER EXTERIOR	17	31AUG09	23SEP09	-29			
81800	SCRATCH / BROWN STUCCO	15	15SEP09	05OCT09	-29			
81900	CURE SCRATCH / BROWN STUCCO	5	06OCT09	12OCT09	-29			
82000	FINISH COAT STUCCO	10	13OCT09	26OCT09	20			
82100	WATERPROOFING AT BRICK VENEER LOCATIONS	10	13OCT09	26OCT09	-29			
82200	INSTALL CAST STONE	15	20OCT09	09NOV09	-29			
82300	INSTALL BRICK VENEER	25	27OCT09	02DEC09	-29			
82400	INSTALL PREFAB METAL CORNICE	10	03DEC09	16DEC09	-29			
82500	INSTALL CAST STONE COLUMN CAPITAL	4	17DEC09	22DEC09	-29			
82600	REMOVE SCAFFOLDING	5	23DEC09	30DEC09	-29			
82700	INSTALL EXTERIOR CANOPIES	5	31DEC09	07JAN10	-24			
82800	INSTALL CAST METAL SIGNAGE	2	31DEC09	04JAN10	-21			

Start Date		09OCT08	Date		
Finish Date		12APR10	Revision		
Date Date		13JAN09	Checked		
Run Date		15JAN09 21:39	Approved		

Sheet 13 of 15

ALDEN CONSTRUCTION, INC.

SAUSOLITO PUBLIC SAFETY BUILDINGS

01/13/08 UPDATE

ALL ACTIVITIES

Legend:  
 Early Bar  
 Progress Bar  
 Critical Activity

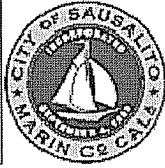
SO2A

© Primavera Systems, Inc.









---

**City of Sausalito Public Safety Facilities**  
Police Station 29 Caledonia Street  
Fire Station 333 Johnson Street  
Sausalito, CA

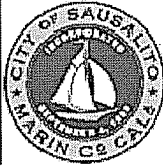
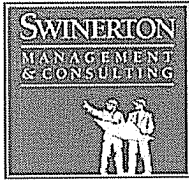
**5. PROJECT NEW CONSTRUCTION BUDGET**

Original Contract Sum:	\$9,266,000.00
Net Change by Change Order:	\$-0-
Contract Sum to Date:	\$9,266,000.00
Total Completed and Stored to Date:	\$1,412,046.00
Less Previous Certificates of Payment:	\$612,815.00
Balance to Finish:	\$7,995,159.00
Project Percentage Complete:	15%

Alten has issued four Change Order Requests. Swinerton, the City and Glass Architects have reviewed these COR's. Swinerton will be recommending three be approved by the City. The COR's will be brought before the City Council for review and approval at the earliest possible time.

The three COR's are for

- 1) Tank Removal Costs
- 2) Removal and Storage of streetlights
- 3) Removal of unforeseen footings

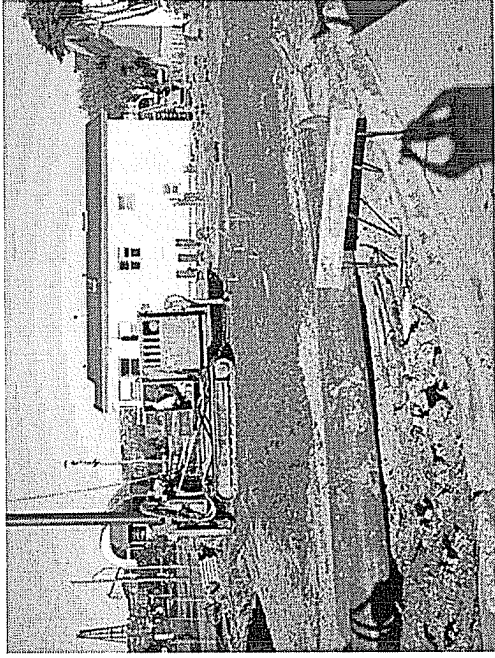
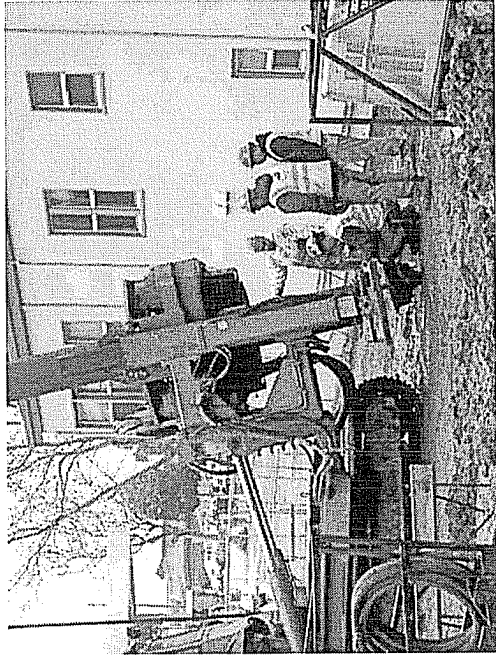
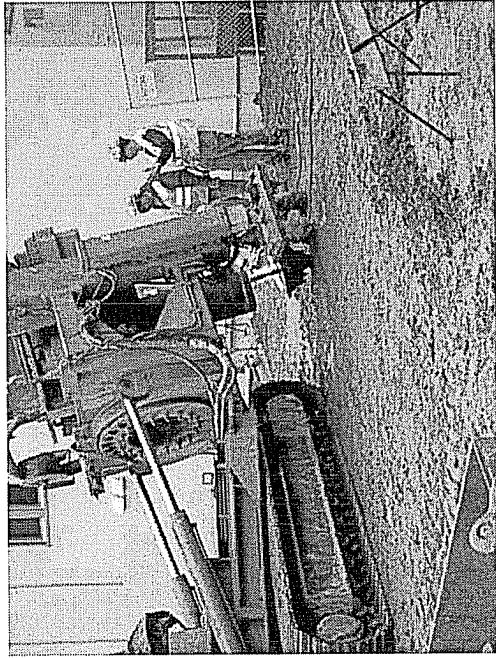


---

**City of Sausalito Public Safety Facilities**  
**Police Station 29 Caledonia Street**  
**Fire Station 333 Johnson Street**  
**Sausalito, CA**

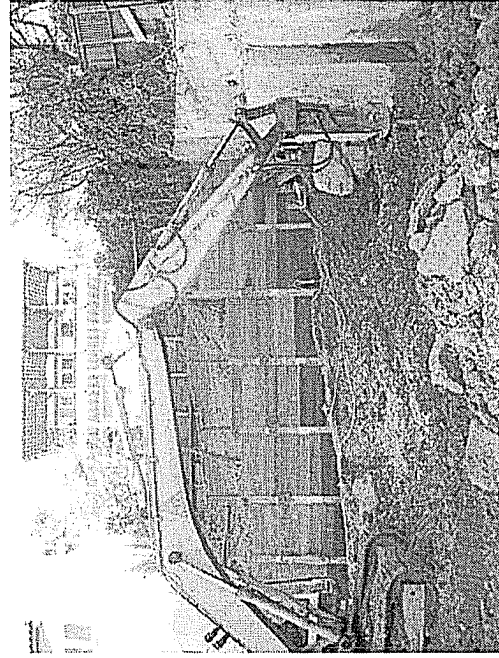
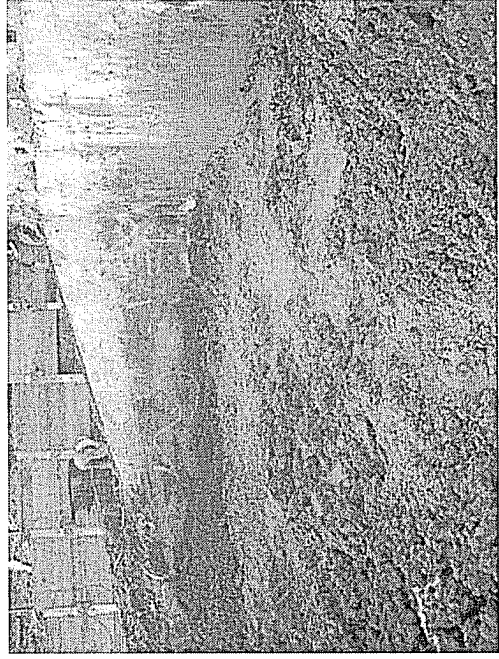
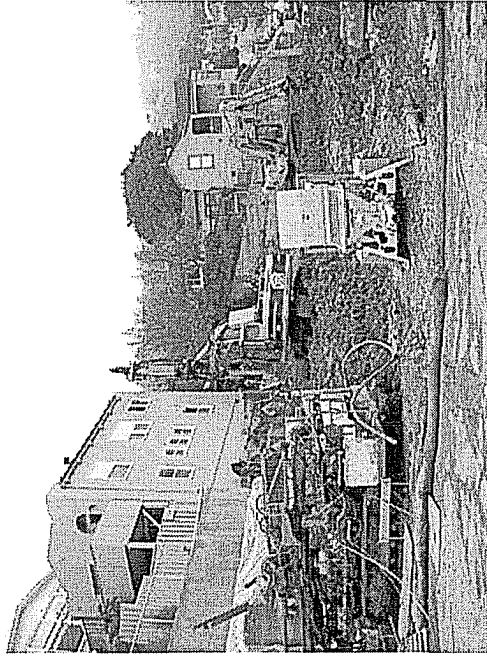
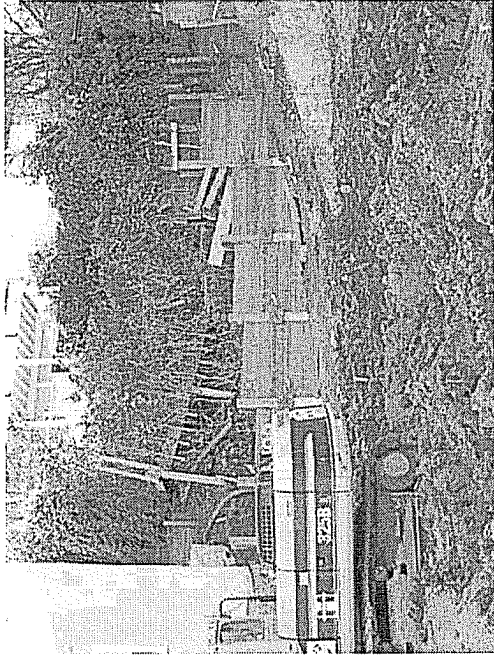
**6. PROJECT PROGRESS PHOTOS**

# 4/18/24 Pile Install Preparation and view of one area of installed piles.

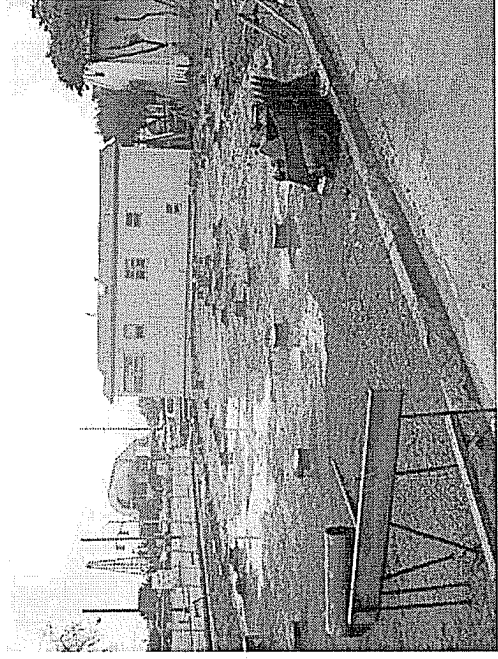
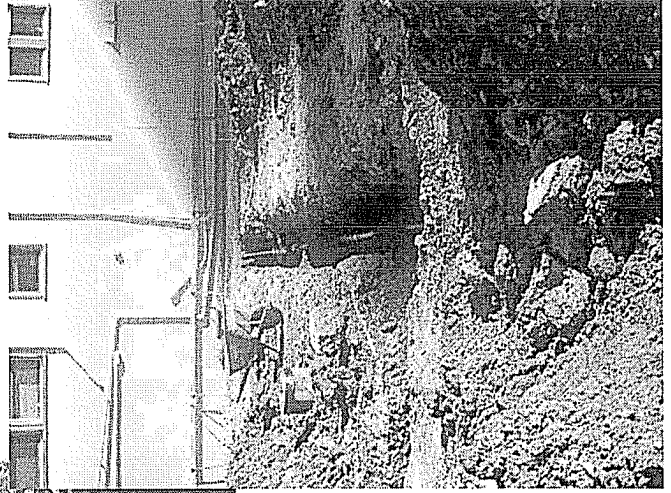




# Work at the Police Department Site and views of the temporary retaining wall scope of work



# Additional views of the Fire Department site



# Work at Police Department Site for retaining walls

