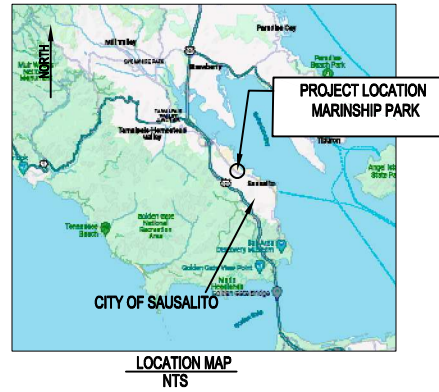


CITY OF SAUSALITO

2024 MARINSHIP PARK TENNIS COURT RECONSTRUCTION



1
1

GENERAL PLAN

1"=40'

NOTES

- CONTRACTOR MAY UTILIZE THE CONCRETE AREA AS A STAGING AREA

SCOPE OF WORK:

- GRIND EXISTING TENNIS COURTS - MINIMUM 2"
- RESURFACE EXISTING TENNIS COURTS - MINIMUM 2" THICKNESS
- RESTRIPE TENNIS COURT AREAS FOR PICKLEBALL AND TENNIS AS SHOWN ON SHEET 2
- INSTALL NEW 6' HIGH EPOXY COATED CHAIN LINK FENCE BETWEEN COURTS (TOTAL 2)
- INSTALL 2 NEW CURB RAMPS PER DETAILS ON SHEET 2
- GRIND AND RESURFACE PARKING LOT - 2" MILL AND FILL
- RESTRIPE PARKING LOT - THERMOPLASTIC
- REPAIR CHAIN LINK FENCING AT TENNIS COURTS

GENERAL QUANTITIES (APPROXIMATE)

TENNIS COURT AREA	21,400 SF
PARKING LOT AREA	7,100 SF
6' HIGH EPOXY COATED FENCING	210 LF
12' HIGH EPOXY COATED FENCING	13 LF
FENCING REPAIR	240 SF

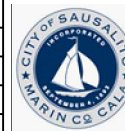
TABLE OF CONTENTS

SHEET	DESCRIPTION
1	GENERAL PLAN
2	TENNIS COURT PLAN
3	PARKING LOT PLAN & DETAILS

Kevin McGowan, Public Works Director C45967
ENGINEER OF RECORD

REVISION	TITLE	DATE
1		

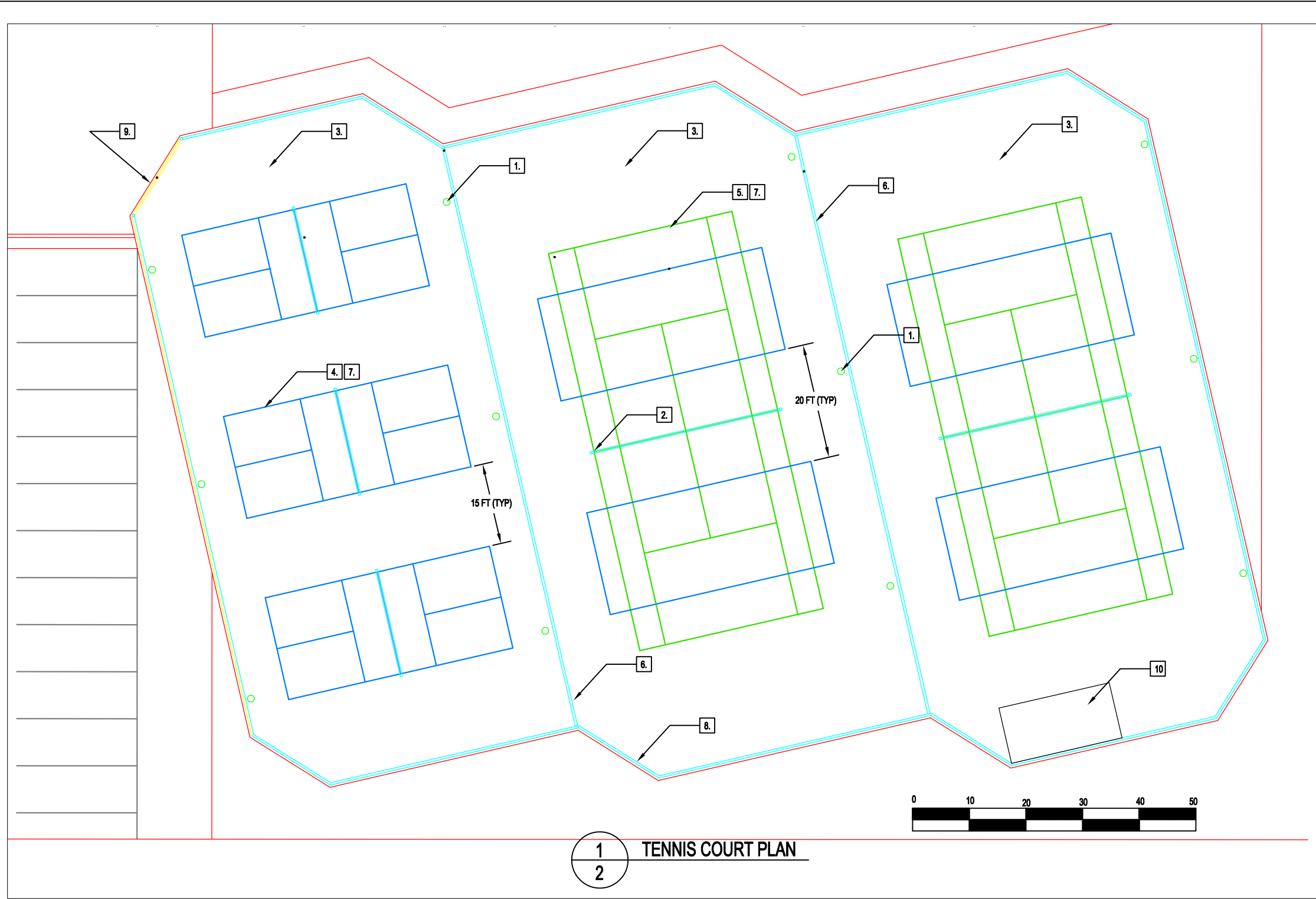
APPROVED & ACCEPTED	DATE	May 2024
Kevin McGowan, Public Works Director C45967	6-24-2024	DRAWN BY SK
CITY OF SAUSALITO	DATE	CHECKED KM



2024
MARINSHIP PARK TENNIS COURT REPAIR

TITLE SHEET & GENERAL PLAN

08.01.012
FILE NO.:
1 OF 3
SHT.



- DETAIL NOTES**
- 1. (E) OVERHEAD LIGHT POLES TO REMAIN. PROTECT DURING COURT RECONSTRUCTION.
 - 2. (N) COURT NET POSTS (TOTAL 2 SETS FOR TENNIS AND 3 SETS FOR PICKLEBALL)
 - 3. GRIND AND RESURFACE TENNIS COURT - 2" GRIND AND RESURFACE
 - 4. PICKLEBALL COURTS STRIPED PER DETAILS IN THE SPECIFICATION APPENDIX
 - 5. TENNIS COURTS STRIPED PER DETAILS IN SPECIFICATION APPENDIX
 - 6. REMOVE (E) FENCE POSTS & INSTALL (N) 6' HIGH BLACK EPOXY COATED FENCE AND POSTS.
 - 7. GREEN COLOR SURFACE MATERIAL (WHITE STRIPING FOR TENNIS COURT AND BLUE STRIPING FOR PICKLEBALL COURTS)
 - 8. PATCH EXISTING 12' HIGH FENCE
 - 9. (N) 12' HIGH X 13' WIDE BLACK EPOXY COATED FENCE
 - 10. 10x20' DIGOUT AREA ON COURTS - REMOVE TREE ROOTS

- NOTES**
- A. CITY TO APPROVE COURT STRIPING LAYOUT PRIOR TO PLACING STRIPES.
 - B. SLOPE COURT TO DRAIN
 - D. CENTER TENNIS AND PICKLEBALL COURTS IN COURT AREA.

REVISION	TITLE	DATE
1		

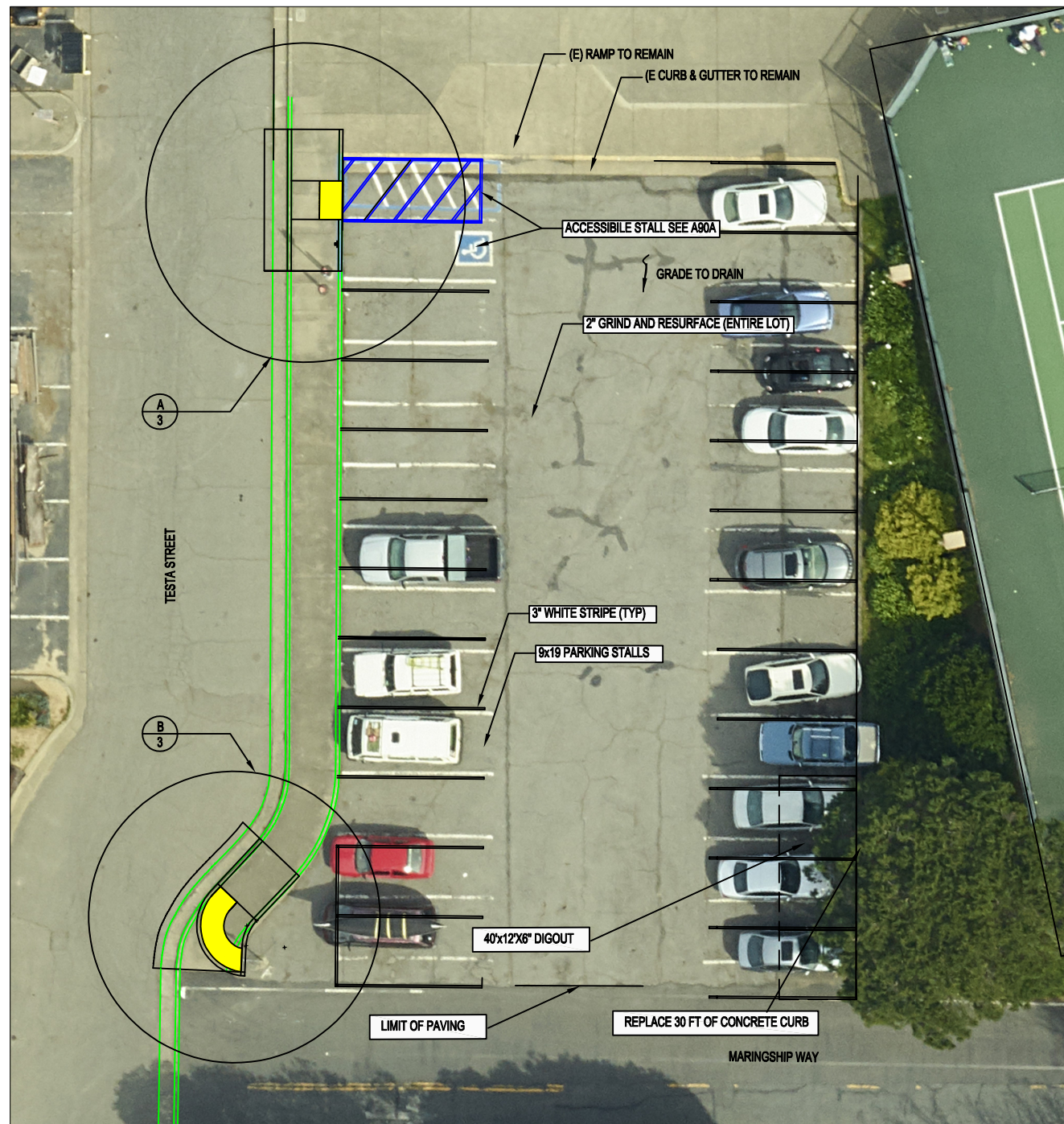
APPROVED & ACCEPTED	DATE 5-10-2024
CITY OF SAUSALITO	DRAWN BY KM
	CHECKED SK



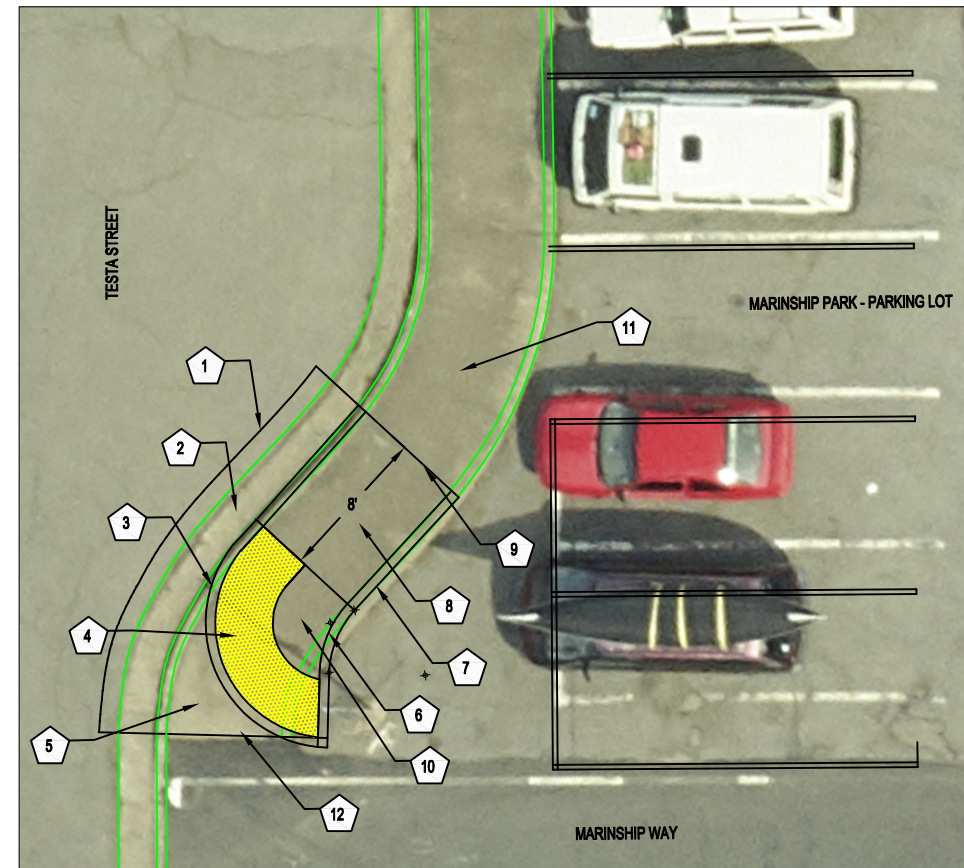
2024
MARINSHIP TENNIS COURT RECONSTRUCTION

TENNIS COURT PLAN

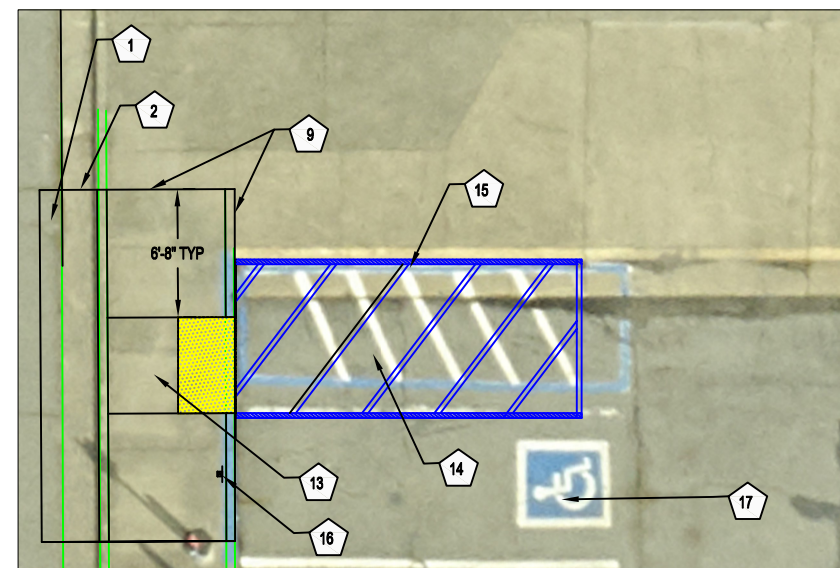
06.01.012
FILE NO.:
2 OF 3
SHT.



1
3
PARKING LOT PLAN
1" = 10'



B
3
DETAIL
1" = 10'



A
3
DETAIL
1" = 10'

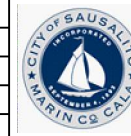
NOTES

- 1 SAWCUT (E) AC 1FT FROM (E) CONCRETE GUTTER. CONFORM AC PAVE
- 2 (N) CURB AND GUTTER - UCS TYPE C
- 3 (N) STANDARD CURB - R=6 FT
- 4 (N) TRUNCATED DOMES - 3 FT WIDE (TYP)
- 5 REMOVE AND REPLACE CONCRETE - 2% EW
- 6 (N) STANDARD CURB - R=6 FT
- 7 (N) STANDARD CURB
- 8 (N) RAMP - 7.5% MAX 8 FT LONG - 2% CROSS SLOPE MAX.
- 9 SAWCUT EXISTING SIDEWALK - CONFORM (N) CURB AND SIDEWALK TO (E) FEATURES
- 10 (N) FLAT PAD - 2% MAX EW
- 11 (E) SIDEWALK TO REMAIN-
- 12 CONFORM TO EXISTING PAVEMENT
- 13 (N) CASE C RAMP - PER A88A
- 14 (N) ACCESSIBLE PARKING PER A90A
- 15 (E) CURB AND GUTTER TO REMAIN
- 16 (N) PARKING SIGN AND POST PER A90A
- 17 (N) ISA MARKING PER A90A - NOT SHOW ON PLAN

REVISION	TITLE	DATE
1		
2		
3		

APPROVED & ACCEPTED	DATE 5-12-2024
CITY OF SAUSALITO	DRAWN BY KM
	CHECKED AD

DATE 5-12-2024
DRAWN BY KM
CHECKED AD



2024
MARINSHIP PARK TENNIS COURT REPAIR

PARKING LOT DETAILS

06.01.012
FILE NO.:
3 OF 3
SHT.