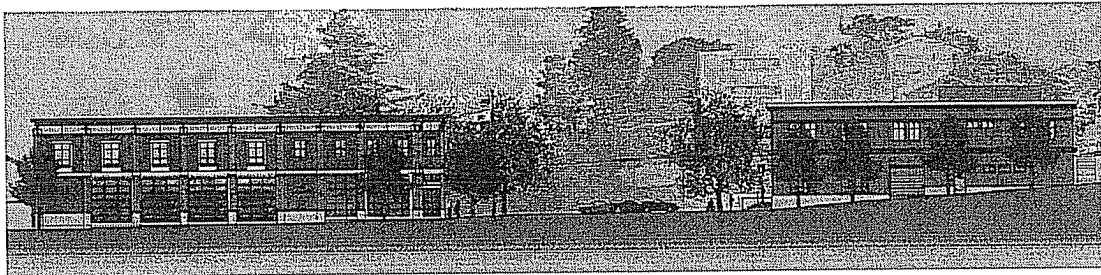




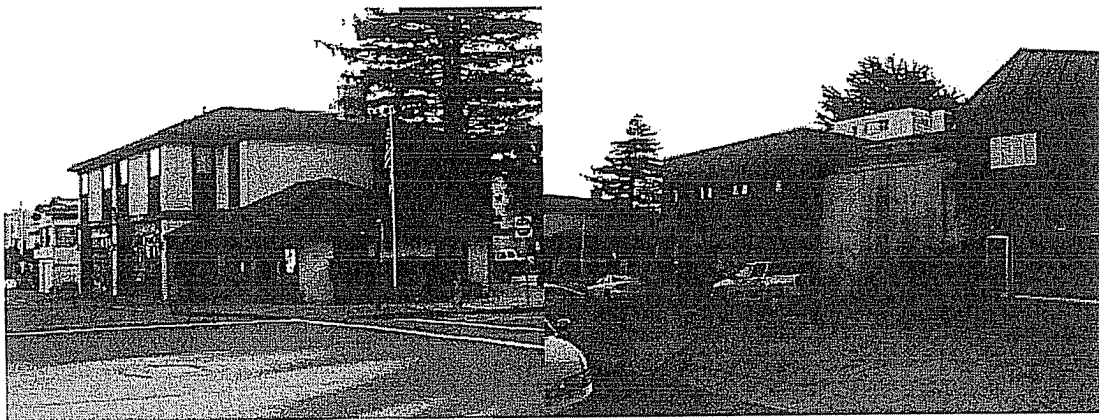
---

**City of Sausalito Public Safety Facilities**  
Police Station 29 Caledonia Street  
Fire Station 333 Johnson Street  
Sausalito, CA

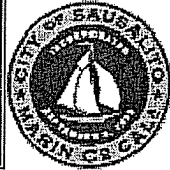
**Monthly Report**  
**No. 4 March 2009**



**Rendering of the new Buildings**



**Previous Fire Station and Police Station**

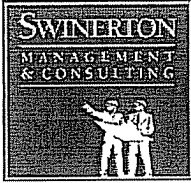


---

**City of Sausalito Public Safety Facilities**  
Police Station 29 Caledonia Street  
Fire Station 333 Johnson Street  
Sausalito, CA

## Table of Contents

1. **Project Data**
  - 1.1 Project Description
  - 1.2 Project Team
- 2 **Executive Summary**
- 3 **Key Project Issues**
4. **Project Schedule**
  - 4.1 Critical path Schedule
5. **Construction Contract and Budget**
6. **Progress Photos**



---

**City of Sausalito Public Safety Facilities**  
**Police Station 29 Caledonia Street**  
**Fire Station 333 Johnson Street**  
**Sausalito, CA**

**1 PROJECT DATA**

**1.1 Project Description**

The Project is the Design and Construction of the Public Safety Facilities for the City of Sausalito. These Facilities are the Police and Fire Stations. These will be two separate buildings on two separate sites. The Police station will be located at 29 Caledonia St. and the Fire Station will be located at 333 Johnson St. The approximate square footage of the new fire station has been revised to 11,703 S.F. and the new police station revised to 8,371 S.F. Construction is scheduled to begin in October 2008. Current projection for completion is 14 months.

**1.2 Project Team**

**Owner**

City of Sausalito  
Sausalito City Council  
Adam Politzer, City Manager  
Jonathon Goldman, Director of Public Works

**Architect**

Glass Architects  
Eric Glass, Principal

**Construction Manager**

Swinerton Management & Consulting  
John Baker, Project Executive  
Loren Umbertis, Project Manager

**General Contractor**

Alten Construction  
Bob Alten, President  
Andrew Nortz, Project Manager  
Paul Fitzgerald, Superintendent

**Civil Engineer - Survey**

BKF Engineers

**Geotechnical Engineers**

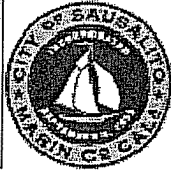
Consolidated Engineering

**Environmental Engineer**

GPI Environmental Management

**Initial Study/Mitigated Negative Declaration**

Pacific Municipal Consultants



---

**City of Sausalito Public Safety Facilities**  
**Police Station 29 Caledonia Street**  
**Fire Station 333 Johnson Street**  
**Sausalito, CA**

## **2 EXECUTIVE SUMMARY**

Notice to Proceed was issued to Alten Construction on October 9<sup>th</sup>, 2008, for the Public Safety Facilities Project. The contract project duration is 420 calendar days. As of this report, February 6<sup>th</sup>, the project is approximately 4 months underway.

February had the appearance of not a lot of activity at the site, but a great deal did occur. Most of the Work occurred at the Fire Department site, with continued work proceeding on the temporary shoring wall at the Police Station site.

We did experience some significant rains during February which made work at the Police Station site difficult or impossible. We will be reviewing any potential delays due to weather when Alten Construction issues their revised Schedule.

The weather had only slight impacts upon the Fire Department site. While there were some days where no work could occur due to rain, generally wet conditions over the entire site did not prevent Alten Construction from continuing their work on the Pile Caps, laying underground piping and utilities, and preparing for foundation and footing concrete pours to occur in early March.

## **3 KEY PROJECT ISSUES**

February was a busy month on the Design side of the Project. Two particular issues were discussed and are now proceeding.

The first issue involved the relocation of the Fire Fighter's pole within their facility. Members of the Fire Department reviewed the drawings as part of the design process, but only recently, did they bring up an issue involved with the location of the Fire Pole. The Fire Department determined that the designed location was not practically located within their facility due to paths of travel and other considerations. Glass Architect's suggested alternative locations and finally a revised location was chosen by the Fire Department Staff. In order to effect this change, Glass Architect's needed to review the new location with their sub-consultants. Upon review by the sub-consultants and an estimate by Swinerton Management & Consulting, it is expected that the change of location will be a zero cost change for the City of Sausalito and may result in a credit.



---

## City of Sausalito Public Safety Facilities

Police Station 29 Caledonia Street

Fire Station 333 Johnson Street

Sausalito, CA

The second item was a review of the Police Station Interview Rooms. The design team has been reviewing options to provide the Police Department with some versatility as to how they will use the Interview Rooms in the future. Should the Police Department wish to use the Interview Rooms as Holding Areas, some changes to the rooms may need to be modified, including the fire rating other fixtures. The Design Team, along with Alten Construction is currently considering these modifications and will review any cost implications.

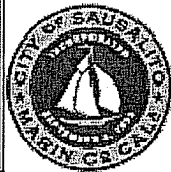
One other aspect of the Project that was discussed during February was the Furniture, Fixture & Equipment (FF&E) program. Glass Architects met with both the Fire and Police Departments to review the FF&E program. These meetings helped Glass Architects to analyze the furniture and fixture requirements of both Departments. Glass provided an initial breakdown of the requirements as well as a very rough budget and a schedule. This Program is currently under review.

Returning to construction matters, as noted in the Executive Summary, work proceeded at a good pace at the Fire Department site. Trenching for all of the underground was completed. Underground plumbing was also placed. Preparation of the Fire Department elevator pit was completed and formwork was placed in anticipation of the concrete pour (to occur in early March).

Alten's Pile Contractor completed their portion of the Pile work by cutting the pile caps to proper height, placing rebar into the piles and pouring of concrete. In early March, the pile cap footings will be poured. Adverse weather slowed this work but did not bring it to a standstill. Good compaction of the jobsite by Alten Construction prior to the installation of the piles meant that many of the trenches did not degrade due to some heavy rains.

The Police Station site, however, did not proceed as well. Absolutely wet soil conditions precluded the use of heavy equipment to prepare the site. Work did still continue on finalizing the temporary shoring system, and framing was placed along the southern wall in preparation of the placement of the permanent retaining wall. But general site work was delayed by adverse weather conditions. Alten, per the contract, is allocated a certain number of days per month for adverse weather conditions, and we will be reviewing their request for delay with the allocated days and other factors. Once the City receives a revised Schedule, SMC and the City will work with Alten Construction on means and methods of recovering any time that may have been lost due to weather conditions.

Overall, the relationship with Alten remains strong and friendly. We have reviewed and approved some change orders for unforeseen issues, and are currently reviewing additional Change Order Requests. It is likely that over the coming months, we will have some challenges as Change Order Requests come in from Alten, but as that is an integral part of any construction project, we are confident that we will address all issues and that the Project will not be adversely impacted.



---

## City of Sausalito Public Safety Facilities

Police Station 29 Caledonia Street

Fire Station 333 Johnson Street

Sausalito, CA

### 4 PROJECT SCHEDULE

Critical Path Schedule from Alten Construction attached.

Activity ID	Activity Description	Orig Dur	Early Start	Finish	Notes
00100	NOTICE TO PROCEED	0	09OCT08A	16FEB10	-76
00200	CONTRACT DURATION	420	09OCT08A		
<b>SUBMITTALS/PROCUREMENT</b>					
01500	PREPARE / SUBMIT PILING	17	09OCT08A	05NOV08A	
01600	REVIEW / APPROVE PILING	5	06NOV08A	14NOV08A	
01700	PROCURE / DELIVER PILING (INCL IND. PROGRAM)	10	17NOV08A	30DEC08A	
01720	PREPARE / SUBMIT SHORING	13	09OCT08A	27OCT08A	
01730	REVIEW / APPROVE SHORING	19	28OCT08A	21NOV08A	
01800	PREPARE / SUBMIT INTEGRAL COLOR CONCRETE PAVING	40	09OCT08A	16DEC08A	
01900	REVIEW / APPROVE INTEGRAL COLOR CONCRETE PAVING	8	17DEC08A	04MAR09	59
02000	PROCURE / DELIVER COLOR CONC PAVING MATERIALS	10	05MAR09	18MAR09	59
02100	PREPARE / SUBMIT PLANTING AND IRRIGATION	60	09OCT08A	03NOV08A	
02200	REVIEW / APPROVE PLANTING AND IRRIGATION	8	04NOV08A	18NOV08A	
02300	PROCURE / DELIVER PLANTING AND IRRIGATION	20	19NOV08A	27FEB09	183
02400	PREPARE / SUBMIT CONCRETE REINFORCEMENT	20	09OCT08A	14JAN09A	
02500	REVIEW / APPROVE CONCRETE REINFORCEMENT	8	15JAN09A	23JAN09A	
02600	PROCURE / DELIVER CONCRETE REINFORCEMENT(AVAIL)	5	26JAN09A	30JAN09A	
02700	PREPARE / SUBMIT CONCRETE MIX DESIGNS	20	09OCT08A	05JAN09A	
02710	REVIEW / RETURN CONCRETE MIX DESIGNS	8	06JAN09A	16JAN09A	
02720	REVISE / RESUBMIT CONCRETE MIX DESIGNS	10	20JAN09A	24FEB09	-49
02800	REVIEW / APPROVE CONCRETE MIX DESIGNS	8	25FEB09	06MAR09	-49
03000	PREPARE / SUBMIT VAPOR CONTROL	30	09OCT08A	30OCT08A	
03100	REVIEW / APPROVE VAPOR CONTROL	8	31OCT08A	10NOV08A	
03200	PROCURE / DELIVER VAPOR CONTROL (AVAILABLE)	5	11NOV08A	17NOV08A	
03300	PREPARE / SUBMIT CMU	30	09OCT08A	01DEC08A	
03400	REVIEW / APPROVE CMU	8	02DEC08A	23DEC08A	
03500	PROCURE / DELIVER CMU	10	24DEC08A	06MAR09	-3
03600	PREPARE / SUBMIT CAST STONE MASONRY	60	09OCT08A	10NOV08A	
03700	REVIEW / APPROVE CAST STONE MASONRY	8	11NOV08A	04MAR09	91
03800	PROCURE / DELIVER CAST STONE MASONRY	40	05MAR09	29APR09	91
03900	PREPARE / SUBMIT STRUCTURAL STEEL	27	09OCT08A	14NOV08A	
04000	REVIEW / APPROVE STRUCTURAL STEEL	8	17NOV08A	23DEC08A	
04100	PROCURE / DELIVER STRUCTURAL STEEL	45	23FEB09	24APR09	-5
04500	PREPARE / SUBMIT STEEL DECKING	35	09OCT08A	14NOV08A	
04520	REVIEW / RETURN STEEL DECKING	8	17NOV08A	24DEC08A	

Sheet 1 of 16

ALLEN CONSTRUCTION, INC.  
 SAUSOLITO PUBLIC SAFETY BUILDINGS  
 02/23/08 UPDATE  
 ALL ACTIVITIES

Start Date: 09OCT08  
 Finish Date: 08MAY10  
 Data Date: 23FEB09  
 Run Date: 06MAR09 17:25

Legend:  
 Early Bar: [Pattern]  
 Progress Bar: [Pattern]  
 Critical Activity: [Pattern]

60A

© Primavera Systems, Inc.

Activity ID	Activity Description	Orig Dur	Early Start	Early Finish	Total Float	2008	2009	2010
04540	REVISE / RESUBMIT STEEL DECKING	10	29DEC08A	15JAN09A				
04600	REVIEW / APPROVE STEEL DECKING	8	16JAN09A	19JAN09A				
04700	PROCURE / DELIVER STEEL DECKING	40	20JAN09A	17APR09	0			
04800	PREPARE / SUBMIT METAL STAIRS	22	09OCT08A	12JAN09A				
04900	REVIEW / APPROVE METAL STAIRS (DEFERRED)	22	13JAN09A	24MAR09	-22			
05000	PROCURE / DELIVER METAL STAIRS	40	25MAR09	19MAY09	-22			
05100	PREPARE / SUBMIT DECORATIVE METAL RAILINGS	27	09OCT08A	17NOV08A				
05200	REVIEW / APPROVE DECORATIVE METAL RAILINGS	8	18NOV08A	12DEC08A				
05300	PROCURE / DELIVER DECORATIVE METAL RAILINGS	40	15DEC08A	17APR09	130			
05400	PREPARE / SUBMIT FORMED METAL CORNICE	40	09OCT08A	09DEC08A				
05500	REVIEW / APPROVE FORMED METAL CORNICE	8	10DEC08A	27FEB09	124			
05600	PROCURE / DELIVER FORMED METAL CORNICE	40	02MAR09	24APR09	124			
05700	PREPARE / SUBMIT STEEL STUDS	40	09OCT08A	15DEC08A				
05800	REVIEW / APPROVE STEEL STUDS	8	16DEC08A	29JAN09A				
05900	PROCURE / DELIVER STEEL STUDS	5	30JAN09A	27FEB09	82			
06000	PREPARE / SUBMIT SHEATHING	40	09OCT08A	06MAR09	74			
06100	REVIEW / APPROVE SHEATHING	8	09MAR09	18MAR09	74			
06200	PROCURE / DELIVER SHEATHING	5	19MAR09	25MAR09	74			
06300	PREPARE / SUBMIT INTERIOR ARCH. WOODWORK	40	09OCT08A	06MAR09	115			
06400	REVIEW / APPROVE INTERIOR ARCH. WOODWORK	8	09MAR09	18MAR09	115			
06500	PROCURE / DELIVER INTERIOR ARCH. WOODWORK	40	19MAR09	13MAY09	115			
06600	PREPARE / SUBMIT PLASTIC PANELING	40	09OCT08A	20MAR09	126			
06700	REVIEW / APPROVE PLASTIC PANELING	8	23MAR09	01APR09	126			
06800	PROCURE / DELIVER PLASTIC PANELING	20	02APR09	29APR09	126			
06900	PREPARE / SUBMIT WATERPROOFING	20	09OCT08A	25FEB09	-54			
07000	REVIEW / APPROVE WATERPROOFING	8	26FEB09	09MAR09	-54			
07100	PROCURE / DELIVER WATERPROOFING	5	10MAR09	16MAR09	-54			
07200	PREPARE / SUBMIT THERMAL INSULATION	40	09OCT08A	20OCT08A				
07300	REVIEW / APPROVE THERMAL INSULATION	8	21OCT08A	17NOV08A				
07400	PROCURE / DELIVER THERMAL INSULATION (AVAILABLE)	5	18NOV08A	24NOV08A				
07500	PREPARE / SUBMIT METAL WALL PANELS	30	09OCT08A	27JAN09A				
07600	REVIEW / APPROVE METAL WALL PANELS	8	28JAN09A	04FEB09A				
07700	PROCURE / DELIVER METAL ROOF SCREENS	40	05FEB09A	17APR09	153			
07800	PREPARE / SUBMIT PVC ROOFING	50	09OCT08A	10DEC08A				
07900	REVIEW / APPROVE PVC ROOFING	8	11DEC08A	23FEB09	119			

Sheet 2 of 16

ALTEN CONSTRUCTION, INC.  
SAUSOLITO PUBLIC SAFETY BUILDINGS  
02/23/08 UPDATE  
ALL ACTIVITIES

09/30/08  
08MAY10  
23FEB09  
06MAR09 17:25

© Primavera, Inc.

Start Date: 09OCT08  
Finish Date: 08MAY10  
Data Date: 23FEB09  
Run Date: 06MAR09 17:25

Early Bar  
Progress Bar  
Critical Activity

Date: \_\_\_\_\_  
Revision: \_\_\_\_\_  
Checked: \_\_\_\_\_  
Approved: \_\_\_\_\_



Activity ID	Activity Description	Orig Dur	Early Start	Earl. Filt.	Total Duration	O	N	D	J	F	M	A	M	J	J	A	S	O	N	D	A	M	J
08000	PROCURE / DELIVER PVC ROOFING	10	24FEB09	09MAR09	119																		
08100	PREPARE / SUBMIT ROOF ACCESSORIES	50	09OCT08A	15JAN09A																			
08200	REVIEW / APPROVE ROOF ACCESSORIES	8	16JAN09A	04MAR09	102																		
08300	PROCURE / DELIVER ROOF ACCESSORIES	20	05MAR09	01APR09	102																		
08400	PREPARE / SUBMIT DOORS / FRAMES / HARDWARE	40	09OCT08A	16JAN09A																			
08500	REVIEW / APPROVE DOORS / FRAMES / HARDWARE	8	20JAN09A	04MAR09	55																		
08600	PROCURE / DELIVER DOOR FRAMES	40	05MAR09	29APR09	55																		
08650	PROCURE / DELIVER DOORS / HARDWARE	40	05MAR09	29APR09	135																		
08700	PREPARE / SUBMIT SECTIONAL DOORS	40	09OCT08A	09FEB09A																			
08800	REVIEW / APPROVE SECTIONAL DOORS	8	10FEB09A	04MAR09	55																		
08900	PROCURE / DELIVER SECTIONAL DOORS	40	05MAR09	29APR09	55																		
09000	PREPARE / SUBMIT ALUM ENTR. / STOREFRONTS	40	09OCT08A	22DEC08A																			
09100	REVIEW / APPROVE ALUM ENTR. / STOREFRONTS	8	23DEC08A	04MAR09	75																		
09200	PROCURE / DELIVER ALUM ENTR. / STOREFRONTS	40	05MAR09	29APR09	75																		
09300	PREPARE / SUBMIT WOOD WINDOWS	40	09OCT08A	26JAN09A																			
09400	REVIEW / APPROVE WOOD WINDOWS	8	27JAN09A	04MAR09	75																		
09500	PROCURE / DELIVER WOOD WINDOWS	40	05MAR09	29APR09	75																		
09600	PREPARE / SUBMIT UNIT SKYLIGHTS	40	09OCT08A	03NOV08A																			
09620	REVIEW / RETURN UNIT SKYLIGHTS	8	04NOV08A	09DEC08A																			
09800	PROCURE / DELIVER UNIT SKYLIGHTS	40	10DEC08A	17APR09	154																		
09900	PREPARE / SUBMIT TUBULAR SKYLIGHTS	40	09OCT08A	20OCT08A																			
10000	REVIEW / APPROVE TUBULAR SKYLIGHTS	8	21OCT08A	09DEC08A																			
10100	PROCURE / DELIVER TUBULAR SKYLIGHTS	40	10DEC08A	17APR09	154																		
10200	PREPARE / SUBMIT MIRRORS	40	09OCT08A	26JAN09A																			
10300	REVIEW / APPROVE MIRRORS	8	27JAN09A	04MAR09	144																		
10400	PROCURE / DELIVER MIRRORS	25	05MAR09	08APR09	144																		
10500	PREPARE / SUBMIT PORTLAND CEMENT PLASTER	40	09OCT08A	24NOV08A																			
10600	REVIEW / APPROVE PORTLAND CEMENT PLASTER	8	25NOV08A	30JAN09A																			
10700	PROCURE / DELIVER PLASTER MATERIALS	10	02FEB09A	06MAR09	94																		
10800	PREPARE / SUBMIT GYPSUM BOARD	40	09OCT08A	15DEC08A																			
10810	REVIEW / RETURN GYPSUM BOARD	8	16DEC08A	29JAN09A																			
10820	REVISE / RESUBMIT GYPSUM BOARD	10	30JAN09A	24FEB09	85																		
10900	REVIEW / APPROVE GYPSUM BOARD	8	25FEB09	06MAR09	85																		
11000	PROCURE / DELIVER GYPSUM BOARD	40	09MAR09	01MAY09	85																		
11100	PREPARE / SUBMIT TILING	40	09OCT08A	02DEC08A																			

Sheet 3 of 16

ALLEN CONSTRUCTION, INC.

SAUSOLITO PUBLIC SAFETY BUILDINGS

02/23/08 UPDATE

ALL ACTIVITIES

Start Date: 08OCT08  
 Finish Date: 06MAY10  
 Data Date: 23FEB09  
 Run Date: 06MAR09 17:25

Legend:  
 Early Bar: [Pattern]  
 Progress Bar: [Pattern]  
 Critical Activity: [Pattern]

Activity ID: 08000

Activity Description: PROCURE / DELIVER PVC ROOFING

Orig Dur: 10

Early Start: 24FEB09

Earl. Filt.: 09MAR09

Total Duration: 119

Revision: \_\_\_\_\_

Date: \_\_\_\_\_

Checked: \_\_\_\_\_

Approved: \_\_\_\_\_

6A  
9

© Primavera Systems, Inc.

Activity ID	Activity Description	Orig. Dur.	Early Start	Early Finish	Total Float	2008	2009	2010
11200	REVIEW / APPROVE TILING	8	03DEC08A	04FEB09A			REVIEW / APPROVE TILING	
11300	PROCURE / DELIVER TILING	40	05FEB09A	17APR09	125		PROCURE / DELIVER TILING	
11400	PREPARE / SUBMIT BRICK TILE VENEER	40	09OCT08A	02DEC08A			PREPARE / SUBMIT BRICK TILE VENEER	
11500	REVIEW / APPROVE BRICK TILE VENEER	8	03DEC08A	04FEB09A			REVIEW / APPROVE BRICK TILE VENEER	
11600	PROCURE / DELIVER BRICK TILE VENEER	40	05FEB09A	17APR09	104		PROCURE / DELIVER BRICK TILE VENEER	
11700	PREPARE / SUBMIT ACOUSTICAL PANEL CEILINGS	40	09OCT08A	17OCT08A			PREPARE / SUBMIT ACOUSTICAL PANEL CEILINGS	
11800	REVIEW / APPROVE ACOUSTICAL PANEL CEILINGS	8	20OCT08A	09DEC08A			REVIEW / APPROVE ACOUSTICAL PANEL CEILINGS	
11900	PROCURE / DELIVER ACOUSTICAL CEILINGS	10	10DEC08A	08MAR09	145		PROCURE / DELIVER ACOUSTICAL CEILINGS	
12000	PREPARE / SUBMIT RESILIENT FLOORING	60	09OCT08A	16FEB09A			PREPARE / SUBMIT RESILIENT FLOORING	
12100	REVIEW / APPROVE RESILIENT FLOORING	8	10FEB09A	04MAR09	147		REVIEW / APPROVE RESILIENT FLOORING	
12200	PROCURE / DELIVER RESILIENT FLOORING	20	05MAR09	01APR09	147		PROCURE / DELIVER RESILIENT FLOORING	
12600	PREPARE / SUBMIT RESILIENT ATHLETIC FLOORING	60	09OCT08A	20MAR09	130		PREPARE / SUBMIT RESILIENT ATHLETIC FLOORING	
12700	REVIEW / APPROVE RESILIENT ATHLETIC FLOORING	8	23MAR09	01APR09	130		REVIEW / APPROVE RESILIENT ATHLETIC FLOORING	
12800	PROCURE / DELIVER RESILIENT ATHLETIC FLOORING	20	02APR09	29APR09	130		PROCURE / DELIVER RESILIENT ATHLETIC FLOORING	
12900	PREPARE / SUBMIT CARPETING	60	09OCT08A	09FEB09A			PREPARE / SUBMIT CARPETING	
13000	REVIEW / APPROVE CARPETING	8	10FEB09A	04MAR09	147		REVIEW / APPROVE CARPETING	
13100	PROCURE / DELIVER CARPETING	20	05MAR09	01APR09	147		PROCURE / DELIVER CARPETING	
13200	PREPARE / SUBMIT PAINTING	60	09OCT08A	20JAN09A			PREPARE / SUBMIT PAINTING	
13300	REVIEW / APPROVE PAINTING	8	21JAN09A	04MAR09	137		REVIEW / APPROVE PAINTING	
13400	PROCURE / DELIVER PAINTING	5	05MAR09	11MAR09	137		PROCURE / DELIVER PAINTING	
13500	PREPARE / SUBMIT VISUAL DISPLAY SURFACES	60	09OCT08A	13MAR09	154		PREPARE / SUBMIT VISUAL DISPLAY SURFACES	
13600	REVIEW / APPROVE VISUAL DISPLAY SURFACES	8	16MAR09	25MAR09	154		REVIEW / APPROVE VISUAL DISPLAY SURFACES	
13700	PROCURE / DELIVER MARKERBOARDS	20	26MAR09	22APR09	154		PROCURE / DELIVER MARKERBOARDS	
13800	PREPARE / SUBMIT SIGNAGE	40	09OCT08A	20MAR09	128		PREPARE / SUBMIT SIGNAGE	
13900	REVIEW / APPROVE SIGNAGE	8	23MAR09	01APR09	128		REVIEW / APPROVE SIGNAGE	
14000	PROCURE / DELIVER SIGNAGE	40	02APR09	28MAY09	128		PROCURE / DELIVER SIGNAGE	
14100	PREPARE / SUBMIT TOILET COMPARTMENTS / ACCESS.	40	09OCT08A	31OCT08A			PREPARE / SUBMIT TOILET COMPARTMENTS / ACCESS.	
14120	REVIEW / RETURN TOILET COMPARTMENTS / ACCESSORIE	8	03NOV08A	08DEC08A			REVIEW / RETURN TOILET COMPARTMENTS / ACCESSORIE	
14300	PROCURE / DELIVER TOILET COMPARTMENTS / ACCESS.	40	09DEC08A	17APR09	154		PROCURE / DELIVER TOILET COMPARTMENTS / ACCESS.	
14400	PREPARE / SUBMIT WALL PROTECTION	40	09OCT08A	10NOV08A			PREPARE / SUBMIT WALL PROTECTION	
14500	REVIEW / APPROVE WALL PROTECTION	8	11NOV08A	10DEC08A			REVIEW / APPROVE WALL PROTECTION	
14600	PROCURE / DELIVER WALL PROTECTION	40	11DEC08A	17APR09	135		PROCURE / DELIVER WALL PROTECTION	
14700	PREPARE / SUBMIT FIRE EXTINGUISHERS / CABINETS	40	09OCT08A	20OCT08A			PREPARE / SUBMIT FIRE EXTINGUISHERS / CABINETS	
14800	REVIEW / APPROVE FIRE EXTINGUISHERS / CABINETS	8	21OCT08A	24NOV08A			REVIEW / APPROVE FIRE EXTINGUISHERS / CABINETS	
14900	PROCURE / DELIVER FIRE EXTINGUISHERS / CABINETS	40	25NOV08A	03APR09	167		PROCURE / DELIVER FIRE EXTINGUISHERS / CABINETS	

Sheet 4 of 16

ALLEN CONSTRUCTION, INC.  
SAUSOLITO PUBLIC SAFETY BUILDINGS  
02/23/08 UPDATE  
ALL ACTIVITIES

503A

Start Date: 09OCT08  
Finish Date: 08MAY10  
Date Date: 23FEB09  
Run Date: 08MAR09 17:26

Legend:  
 Early Bar  
 Progress Bar  
 Critical Activity

6A  
10

© Primavera  
ms, Inc.

Date	Revision	Checked	Approved

Activity ID	Activity Description	Orig Dur	Early Start	Early Finish	Total Duration	Activity	Notes
15000	PREPARE / SUBMIT METAL LOCKERS	40	09OCT08A	27OCT08A		PREPARE / SUBMIT METAL LOCKERS	
15100	REVIEW / APPROVE METAL LOCKERS	8	28OCT08A	24NOV08A		REVIEW / APPROVE METAL LOCKERS	
15200	PROCURE / DELIVER METAL LOCKERS	40	25NOV08A	03APR09	147	PROCURE / DELIVER METAL LOCKERS	
15300	PREPARE / SUBMIT TURNOUT LOCKERS	40	09OCT08A	27OCT08A		PREPARE / SUBMIT TURNOUT LOCKERS	
15400	REVIEW / APPROVE TURNOUT LOCKERS	8	28OCT08A	24NOV08A		REVIEW / APPROVE TURNOUT LOCKERS	
15500	PROCURE / DELIVER TURNOUT LOCKERS	40	25NOV08A	03APR09	150	PROCURE / DELIVER TURNOUT LOCKERS	
15550	RFI #23: CLARIFY SUNSHADE / LOUVER DETAILS	1	17DEC08A	08JAN09A		RFI #23: CLARIFY SUNSHADE / LOUVER DETAILS	
15600	PREPARE / SUBMIT SUN CONTROL DEVICES	40	09OCT08A	05FEB09A		PREPARE / SUBMIT SUN CONTROL DEVICES	
15700	REVIEW / APPROVE SUN CONTROL DEVICES (DEFERRED)	22	06FEB09A	24MAR09	131	REVIEW / APPROVE SUN CONTROL DEVICES (DEFERRED)	
15800	PROCURE / DELIVER CANOPIES	40	25MAR09	19MAY09	131	PROCURE / DELIVER CANOPIES	
15900	PREPARE / SUBMIT PROJECTION SCREENS	60	09OCT08A	24DEC08A		PREPARE / SUBMIT PROJECTION SCREENS	
16000	REVIEW / APPROVE PROJECTION SCREENS	8	29DEC08A	04MAR09	169	REVIEW / APPROVE PROJECTION SCREENS	
16100	PROCURE / DELIVER PROJECTION SCREEN	20	05MAR09	01APR09	169	PROCURE / DELIVER PROJECTION SCREEN	
16200	PREPARE / SUBMIT BULLET RESISTIVE CONSTRUCTION	60	09OCT08A	27OCT08A		PREPARE / SUBMIT BULLET RESISTIVE CONSTRUCTION	
16300	REVIEW / APPROVE BULLET RESISTIVE CONSTRUCTION	8	28OCT08A	24NOV08A		REVIEW / APPROVE BULLET RESISTIVE CONSTRUCTION	
16400	PROCURE / DELIVER BULLET RESISTIVE CONSTRUCTION	40	25NOV08A	03APR09	121	PROCURE / DELIVER BULLET RESISTIVE CONSTRUCTION	
16500	PREPARE / SUBMIT HYDRAULIC ELEVATORS	40	09OCT08A	26NOV08A		PREPARE / SUBMIT HYDRAULIC ELEVATORS	
16600	REVIEW / APPROVE HYDRAULIC ELEVATORS	8	01DEC08A	24FEB09	106	REVIEW / APPROVE HYDRAULIC ELEVATORS	
16700	PROCURE / DELIVER HYDRAULIC ELEVATORS	40	25FEB09	21APR09	106	PROCURE / DELIVER HYDRAULIC ELEVATORS	
16800	PREPARE / SUBMIT FIRE POLE	60	09OCT08A	20OCT08A		PREPARE / SUBMIT FIRE POLE	
16900	REVIEW / APPROVE FIRE POLE	8	21OCT08A	08DEC08A		REVIEW / APPROVE FIRE POLE	
17000	PROCURE / DELIVER FIRE POLE	40	09DEC08A	17APR09	156	PROCURE / DELIVER FIRE POLE	
17100	PREPARE / SUBMIT PLUMBING	30	09OCT08A	20OCT08A		PREPARE / SUBMIT PLUMBING	
17200	REVIEW / APPROVE PLUMBING	8	21OCT08A	26NOV08A		REVIEW / APPROVE PLUMBING	
17300	PROCURE / DELIVER PLUMBING	20	01DEC08A	13MAR09	83	PROCURE / DELIVER PLUMBING	
17400	PREPARE / SUBMIT FIRE SPRINKLER	22	09OCT08A	23FEB09	45	PREPARE / SUBMIT FIRE SPRINKLER	
17500	REVIEW / APPROVE FIRE SPRINKLER (DEFERRED)	22	24FEB09	25MAR09	45	REVIEW / APPROVE FIRE SPRINKLER (DEFERRED)	
17600	PROCURE / DELIVER FIRE SPRINKLER	20	26MAR09	22APR09	45	PROCURE / DELIVER FIRE SPRINKLER	
17700	PREPARE / SUBMIT HVAC EQUIPMENT	30	09OCT08A	26JAN09A		PREPARE / SUBMIT HVAC EQUIPMENT	
17800	REVIEW / APPROVE HVAC EQUIPMENT	8	29JAN09A	16FEB09A		REVIEW / APPROVE HVAC EQUIPMENT	
17900	PROCURE / DELIVER HVAC EQUIPMENT	40	17FEB09A	17APR09	140	PROCURE / DELIVER HVAC EQUIPMENT	
18000	PREPARE / SUBMIT HVAC DUCTWORK	30	09OCT08A	26JAN09A		PREPARE / SUBMIT HVAC DUCTWORK	
18100	REVIEW / APPROVE HVAC DUCTWORK	8	29JAN09A	16FEB09A		REVIEW / APPROVE HVAC DUCTWORK	
18200	PROCURE / DELIVER HVAC DUCTWORK	20	17FEB09A	20MAR09	78	PROCURE / DELIVER HVAC DUCTWORK	
18300	PREPARE / SUBMIT VEHICLE EXHAUST REMOVAL SYS.	30	09OCT08A	20OCT08A		PREPARE / SUBMIT VEHICLE EXHAUST REMOVAL SYS.	

Start Date: 09OCT08  
 Finish Date: 08MAY10  
 Data Date: 26FEB09  
 Run Date: 06MAR09 17:25

ALTEN CONSTRUCTION, INC.  
 SAUSOLITO PUBLIC SAFETY BUILDINGS  
 02/23/08 UPDATE  
 ALL ACTIVITIES

Sheet 5 of 16

Activity Legend:  Early Bar  
 Progress Bar  
 Critical Activity

Date	Revision	Checked	Approved

© Primavera Systems, Inc.

Activity ID	Activity Description	Orig Dur	Early Start	Early Finish	Total Float	2008	2009	2010
18320	REVIEW / RETURN VEHICLE EXHAUST REMOVAL SYS.	8	21OCT08A	16DEC08A				
18340	REVISE RESUBMIT VEHICLE EXHAUST REMOVAL SYS.	10	16DEC08A	09JAN09A				
18400	REVIEW / APPROVE VEHICLE EXHAUST REMOVAL SYS.	8	12JAN09A	30JAN09A				
18500	PROCURE / DELIVER VEHICLE EXHAUST REMOVAL SYS.	40	02FEB09A	17APR09	145			
18600	PREPARE / SUBMIT ELECTRICAL LIGHTING	30	09OCT08A	01DEC08A				
18620	REVIEW / RETURN ELECTRICAL LIGHTING	8	02DEC08A	07JAN09A				
18640	REVISE / RESUBMIT ELECTRICAL LIGHTING	10	08JAN09A	09FEB09A				
18700	REVIEW / APPROVE ELECTRICAL LIGHTING	8	10FEB09A	04MAR09	116			
18800	PROCURE / DELIVER ELECTRICAL LIGHTING	40	05MAR09	29APR09	116			
18900	PREPARE / SUBMIT LOW VOLTAGE LIGHTING CONTROL	30	09OCT08A	01DEC08A				
19100	REVIEW / APPROVE LOW VOLTAGE LIGHTING CONTROL	8	02DEC08A	07JAN09A				
19200	PROCURE / DELIVER LOW VOLTAGE LIGHTING CONTROL	40	08JAN09A	17APR09	124			
19300	PREPARE / SUBMIT EMERGENCY GENERATOR	50	09OCT08A	01DEC08A				
19320	REVIEW / RETURN EMERGENCY GENERATOR SYSTEM	8	02DEC08A	07JAN09A				
19340	REVISE / RESUBMIT EMERGENCY GENERATOR SYSTEM	10	08JAN09A	26JAN09A				
19400	REVIEW / APPROVE EMERGENCY GENERATOR	8	29JAN09A	04MAR09	132			
19500	PROCURE / DELIVER EMERGENCY GENERATOR	40	05MAR09	29APR09	132			
19600	PREPARE / SUBMIT FIRE ALARM	22	09OCT08A	04FEB09A				
19700	REVIEW / APPROVE FIRE ALARM (DEFERRED)	22	05FEB09A	24MAR09	51			
19800	PROCURE / DELIVER FIRE ALARM	40	25MAR09	19MAY09	51			
20200	PREPARE / SUBMIT PAVEMENT MARKINGS	60	09OCT08A	03NOV08A				
20300	REVIEW / APPROVE PAVEMENT MARKINGS	8	04NOV08A	28JAN09A				
20400	PROCURE / DELIVER PAVEMENT MARKINGS	40	29JAN09A	17APR09	156			
20500	PREPARE / SUBMIT U/G UTILITIES (WATER/SEWER/SD)	30	09OCT08A	21NOV08A				
20600	REVIEW / APPROVE U/G UTILITIES (WATER/SEWER/SD)	8	24NOV08A	12DEC08A				
20700	PROCURE / DELIVER U/G UTILITIES (WATER/SEWER/SD)	40	15DEC08A	17APR09	-4			
20800	PREPARE / SUBMIT EROSION CONTROL PLAN	5	09OCT08A	24NOV08A				
20900	REVIEW / APPROVE EROSION CONTROL PLAN	8	24NOV08A	24NOV08A				
21000	PREPARE / SUBMIT TRASH ENCLOSURE	22	09OCT08A	25NOV08A				
21020	REVIEW / RETURN TRASH ENCLOSURE	22	26NOV08A	22DEC08A				
21040	REVISE / RESUBMIT TRASH ENCLOSURE	22	23DEC08A	15JAN09A				
21100	REVIEW / APPROVE TRASH ENCLOSURE (DEFERRED)	22	16JAN09A	24FEB09	-20			
21200	PROCURE / DELIVER TRASH ENCLOSURE	30	25FEB09	07APR09	-20			
21300	PREPARE / SUBMIT WINDOW SHADES	30	05JAN09A	09JAN09A				
21400	REVIEW / APPROVE WINDOW SHADES	8	12JAN09A	04MAR09	148			

Sheet 6 of 16

AL TEN CONSTRUCTION, INC.  
SAUSOLITO PUBLIC SAFETY BUILDINGS  
02/23/08 UPDATE  
ALL ACTIVITIES

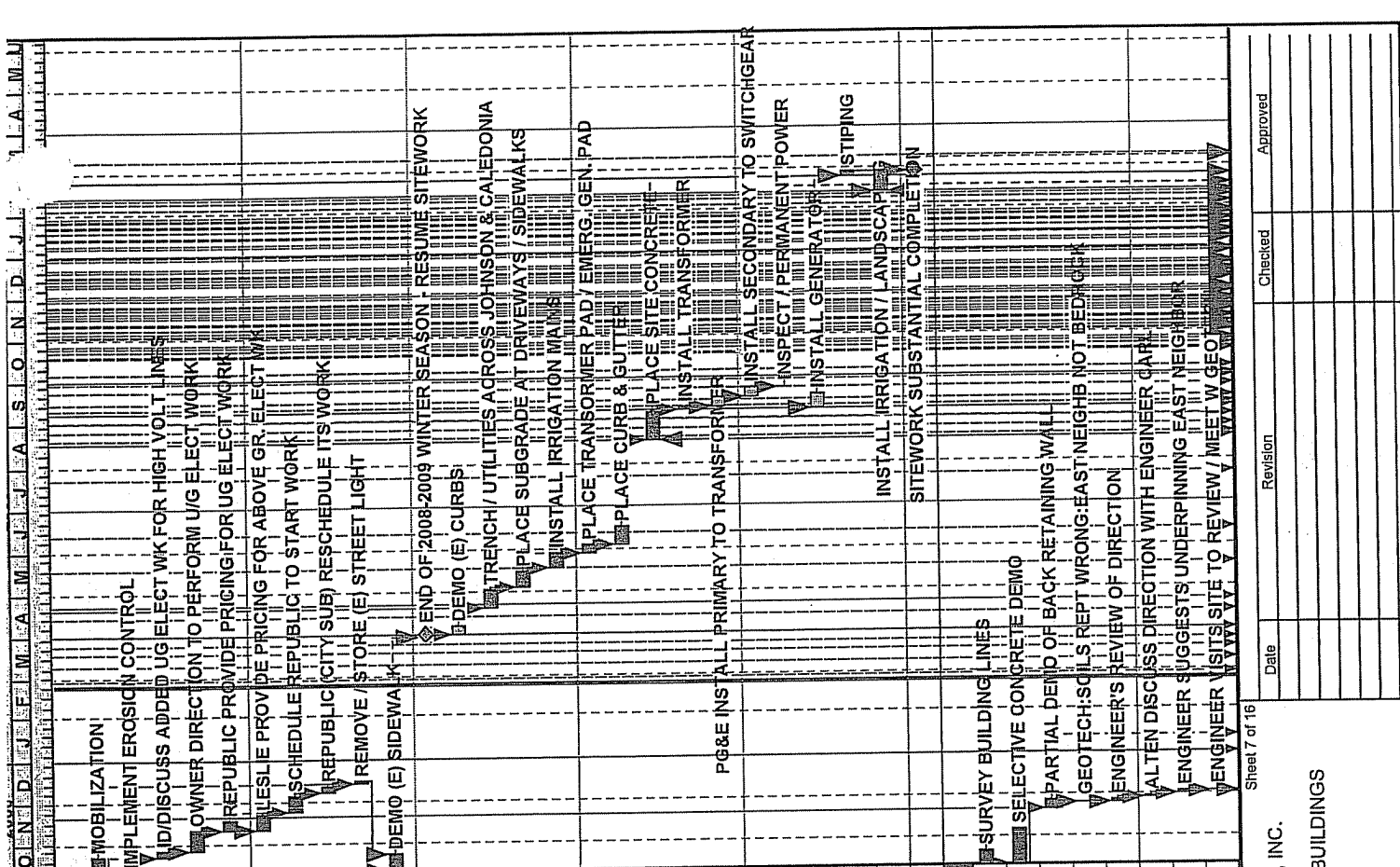
08OCT08  
08MAY10  
23FEB09  
06MAR09 17:25

Early Bar  
Progress Bar  
Critical Activity

128

© Primavera .ems, Inc.

Date	Revision	Checked	Approved



Activity ID	Activity Description	Orig Dur	Early Start	Early Finish
31200	MOBILIZATION	10	09OCT08A	22OCT08A
31300	IMPLEMENT EROSION CONTROL	1	09OCT08A	09OCT08A
31350	ID/DISCUSS ADDED UG ELECT WK FOR HIGH VOLT LINES	1	23OCT08A	27OCT08A
31360	OWNER DIRECTION TO PERFORM UG ELECT WORK	1	28OCT08A	10NOV08A
31370	REPUBLIC PROVIDE PRICING FOR UG ELECT WORK	1	11NOV08A	17NOV08A
31380	LESLIE PROVIDE PRICING FOR ABOVE GR. ELECT WK	1	11NOV08A	21NOV08A
31390	SCHEDULE REPUBLIC TO START WORK	8	24NOV08A	05DEC08A
31395	REPUBLIC (CITY SUB) RESCHEDULE ITS WORK	10	08DEC08A	12DEC08A
31400	REMOVE / STORE (E) STREET LIGHT	1	15DEC08A	15DEC08A
31500	DEMO (E) SIDEWALK	10	10OCT08A	23OCT08A
31600	END OF 2008-2009 WINTER SEASON - RESUME SITEWORK	0		30MAR09*
31700	DEMO (E) CURBS	5	31MAR09	06APR09
31800	TRENCH / UTILITIES ACROSS JOHNSON & CALEDONIA	10	20APR09	01MAY09
31900	PLACE SUBGRADE AT DRIVEWAYS / SIDEWALKS	10	04MAY09	15MAY09
31950	INSTALL IRRIGATION MAINS	7	18MAY09	27MAY09
32000	PLACE TRANSFORMER PAD / EMERG. GEN. PAD	4	28MAY09	02JUN09
32100	PLACE CURB & GUTTER	10	03JUN09	16JUN09
32200	PLACE SITE CONCRETE	15	18AUG09	08SEP09
32300	INSTALL TRANSFORMER	1	09SEP09	09SEP09
32350	PG&E INSTALL PRIMARY TO TRANSFORMER	5	10SEP09	16SEP09
32370	INSTALL SECONDARY TO SWITCHGEAR	5	17SEP09	23SEP09
32380	INSPECT / PERMANENT POWER	1	24SEP09	24SEP09
32400	INSTALL GENERATOR	8	09SEP09	18SEP09
32500	STIPING	2	24FEB10	25FEB10
38000	INSTALL IRRIGATION / LANDSCAPING	10	12FEB10	25FEB10
38100	SITEWORK SUBSTANTIAL COMPLETION	0		25FEB10
<b>POLICE STATION STRUCTURE</b>				
41500	SURVEY BUILDING LINES	8	09OCT08A	20OCT08A
41600	SELECTIVE CONCRETE DEMO	20	09OCT08A	05NOV08A
41700	PARTIAL DEMO OF BACK RETAINING WALL	5	21NOV08A	26NOV08A
41710	GEOTECH: SOILS REPT WRONG: EAST NEIGHB NOT BEDROCK	1	25NOV08A	25NOV08A
41715	ENGINEER'S REVIEW OF DIRECTION	1	26NOV08A	26NOV08A
41720	AL TEN DISCUSS DIRECTION WITH ENGINEER CARL	1	29NOV08A	29NOV08A
41725	ENGINEER SUGGESTS UNDERPINNING EAST NEIGHBOR	1	01DEC08A	01DEC08A
41730	ENGINEER VISITS SITE TO REVIEW / MEET W GEOTECH	1	02DEC08A	02DEC08A

Sheet 7 of 16

Date	Revision	Checked	Approved

AL TEN CONSTRUCTION, INC.  
 SAUSOLITO PUBLIC SAFETY BUILDINGS  
 02/23/08 UPDATE  
 ALL ACTIVITIES

S03A

Start Date: 08OCT08  
 Finish Date: 08MAY10  
 Data Date: 23FEB09  
 Run Date: 06MAY09 17:25

Legend:  
 Early Bar  
 Progress Bar  
 Critical Activity

6A  
13

© Primavera Systems, Inc.

Activity ID	Activity Description	Orig Dur	Early Start	Early Finish	Total Float	2008	2009	2010
41735	GEOTECH DIRECTION TO EXCAVATE TO BEDROCK	1	03DEC08A	03DEC08A				
41740	EXCAVATE FOR UNDERPINNING - NO ROCK AT 15'	5	03DEC08A	09DEC08A				
41745	CONSULT WITH GEOTECH RE: BLDG FOUNDTN / BASEROCK	1	10DEC08A	10DEC08A				
41750	INSTALL STEEL CAGES FOR UNDERPINNING PIERS	1	10DEC08A	10DEC08A				
41755	PLACE UNDERPINNING PIERS FOR EAST NEIGHBOR	1	10DEC08A	10DEC08A				
41760	EXCAVATE FOR UNDERPINNING AT SEQUENCE 2	4	11DEC08A	11DEC08A				
41765	INSTALL STEEL CAGES FOR UNDERPIN PIERS SEQ. 2	1	12DEC08A	12DEC08A				
41770	PLACE UNDERPIN PIERS FOR EAST NEIGHBOR SEQ. 2	1	12DEC08A	12DEC08A				
41780	DISCUSS SOIL CONDITIONS - SURE DIRECT REDESIGN	20	08DEC08A	08DEC08A				
41782	REDESIGN SHORING SYSTEM BASED ON UNFOR. COND	20	09DEC08A	23DEC08A				
41784	INTERMITTENT TIEBACK WORK DURING UNFOR. ISSUES	1	15DEC08A	24DEC08A				
41786	PROCURE SOLDIER BEAMS PER REDESIGN	0	24DEC08A	05JAN09A				
41788	INSTALL SOLDIER BEAMS PER SHORING REDESIGN	1	06JAN09A	12JAN09A				
41790	INSTALL LAGGING PER SHORING REDESIGN	10	13JAN09A	27JAN09A				
41800	DRILL / INSTALL TIEBACKS	10	13JAN09A	27JAN09A				
41810	RAIN DAY 1/5	1	05JAN09A	05JAN09A				
41820	RAIN DAY 1/21-23	1	21JAN09A	23JAN09A				
41830	RAIN DAY 2/6	1	06FEB09A	06FEB09A				
41835	RAIN DAY 2/10	1	10FEB09A	10FEB09A				
41837	MUD DAY / WORK NOT PROCEEDING 100% 2/11	1	11FEB09A	11FEB09A				
41840	RAIN DAY 2/13	1	13FEB09A	13FEB09A				
41850	RAIN DAYS 2/16-17	1	16FEB09A	17FEB09A				
41860	MUD DAY 2/18	1	18FEB09A	18FEB09A				
41870	MUD DAY 2/23	1	23FEB09	23FEB09	-67			
41900	COMPLETE DEMOLITION (PARTIAL)	10	28JAN09A	06FEB09A				
41910	RFI #51: EXISTING RETAINING WALL GL 1 CONFLICT	3	09FEB09A	20FEB09A				
41920	REMOVE (E) RETAINING WALL / SHORING PER RFI #51	10	24FEB09	09MAR09	-67			
42000	CUT BUILDING PADS / ROUGH GRADE	5	10MAR09	16MAR09	-67			
42300	EXCAVATE LINE E / LINE 1 FOOTINGS	4	17MAR09	20MAR09	-67			
42350	INSTALL SLEEVES FOR U/G UTILITIES	4	17MAR09	20MAR09	-65			
42400	LEAN FILL CONCRETE LINE E / LINE 1	1	23MAR09	23MAR09	-65			
42500	REBAR LINE E / LINE 1 FOOTINGS	5	24MAR09	30MAR09	-65			
42600	PLACE LINE E / LINE 1 FOOTINGS	1	31MAR09	31MAR09	-65			
42700	FORMWORK / WATERPROOFING LINE E / LINE 1 WALLS	15	01APR09	21APR09	-65			
42800	REBAR LINE E / LINE 1 WALLS	5	17APR09	23APR09	-65			

Sheet 8 of 16

ALLEN CONSTRUCTION, INC.

SAUSOLITO PUBLIC SAFETY BUILDINGS

02/23/08 UPDATE

ALL ACTIVITIES

Start Date: 09OCT08  
 Finish Date: 08MAY10  
 Data Date: 23FEB09  
 Run Date: 06MAR09 17:25

Legend:  
 Early Bar  
 Progress Bar  
 Critical Activity

6B  
7

© Primavera Systems, Inc.

Date	Revision	Checked	Approved

Activity ID	Activity Description	Orig Dur	Early Start	Ear Fini	Total Dur
42900	SHOTCRETE LINE E / LINE 1 WALLS	1	24APR09	24APR09	-65
43000	EXCAVATE DEEP FTGS	7	23MAR09	31MAR09	-67
43100	PLACE LEAN FILL	2	01APR09	02APR09	-67
43200	REBAR DEEP FTGS	7	03APR09	13APR09	-67
43300	PLACE DEEP FTGS	1	14APR09	14APR09	-67
43400	DRILL / INSTALL ELEVATOR RAM	4	15APR09	20APR09	-45
43500	FORM / REBAR / PLACE ELEVATOR PIT SLAB / WALLS	10	15APR09	29APR09	-67
43600	EXCAVATE REMAINING FOOTINGS	5	29APR09	05MAY09	-67
43700	PLACE LEAN FILL AT REMAINING FOOTINGS	3	06MAY09	09MAY09	-67
43800	REBAR REMAINING FOOTINGS	5	11MAY09	15MAY09	-67
43900	INSTALL ANCHOR BOLTS AT REMAINING FOOTINGS	2	18MAY09	19MAY09	-67
44000	PLACE REMAINING FOOTINGS	1	20MAY09	20MAY09	-67
44100	SET COLUMNS / BEAMS AT 4, 5, 9	10	21MAY09	04JUN09	-67
44200	FORM 1 SIDE INTERIOR WALLS	20	05JUN09	02JUL09	-67
44300	REBAR INTERIOR WALLS	20	12JUN09	10JUL09	-67
44400	INSTALL TEMPLATES / EMBEDS AT INTERIOR WALLS	4	07JUL09	10JUL09	-67
44500	SCOTCRETE INTERIOR WALLS	5	13JUL09	17JUL09	-67
44550	STRIP INTERIOR WALLS	3	20JUL09	22JUL09	-67
44600	ROCK / SAND / VAPOR BARRIER	5	23JUL09	29JUL09	-67
44700	FORM SLAB ON GRADE	8	30JUL09	10AUG09	-67
44800	REBAR SLAB ON GRADE	5	05AUG09	11AUG09	-67
44900	SET SCREEDS	5	10AUG09	14AUG09	-67
45000	INSTALL EMBEDS / ANCHOR BOLTS	3	12AUG09	14AUG09	-67
45100	PLACE SLAB ON GRADE	1	17AUG09	17AUG09	-67
45200	ERECT STRUCTURAL STEEL / STAIRS / LAY PAN DECK	25	18AUG09	22SEP09	-67
45300	WELD DECKING POLICE STATION	10	23SEP09	06OCT09	-67
45400	EDGE FORM LEVEL 2	7	07OCT09	15OCT09	-67
45500	INSTALL REBAR LEVEL 2	7	07OCT09	15OCT09	-67
45600	PLACE LEVEL 2 CONCRETE	1	16OCT09	16OCT09	-65
45700	STRIP EDGE FORM LEVEL 2	2	19OCT09	20OCT09	-65
45800	EDGE FORM ROOF	7	16OCT09	26OCT09	-67
45900	INSTALL REBAR ROOF	7	16OCT09	26OCT09	-67
46000	PLACE ROOF CONCRETE	1	27OCT09	27OCT09	-67
46100	STRIP EDGE FORM ROOF	2	28OCT09	29OCT09	-67

Start Date: 09OCT08

Finish Date: 08MAY10

Date Date: 23FEB09

Run Date: 06MAR09 17:25

Early Bar

Progress Bar

Critical Activity

Sheet 9 of 16

ALTEN CONSTRUCTION, INC.

SAUSOLITO PUBLIC SAFETY BUILDINGS

02/23/08 UPDATE

ALL ACTIVITIES

Date

Revision

Checked

Approved

Activity ID	Activity Description	Orig Dur	Early Star	Early Finish	Total Float	2008	2009	2010
						O	N	D
						J	F	A
						M	A	M
						J	J	A
						S	O	N
						D	J	F
						M	A	M
						A	M	A
						M	A	M
<b>POLICE STATION EXTERIOR</b>								
51200	EXTERIOR FRAMING LEVEL 1	12	21OCT09	05NOV09	-59			EXTERIOR FRAMING LEVEL 1
51300	EXTERIOR FRAMING LEVEL 2	12	30OCT09	16NOV09	-64			EXTERIOR FRAMING LEVEL 2
51400	SCAFFOLD FIRE STATION	5	21OCT09	27OCT09	-54			SCAFFOLD FIRE STATION
51500	EXTERIOR SHEATHING LEVEL 1	5	04NOV09	10NOV09	-59			EXTERIOR SHEATHING LEVEL 1
51550	INSTALL FLASHINGS LEVEL 1	4	09NOV09	12NOV09	-59			INSTALL FLASHINGS LEVEL 1
51600	EXTERIOR SHEATHING LEVEL 2	5	13NOV09	19NOV09	-64			EXTERIOR SHEATHING LEVEL 2
51700	INSTALL FLASHINGS LEVEL 2	4	18NOV09	23NOV09	-64			INSTALL FLASHINGS LEVEL 2
51800	INSTALL STOREFRONTS / WINDOWS LEVEL 1	10	13NOV09	30NOV09	-57			INSTALL STOREFRONTS / WINDOWS LEVEL 1
51900	INSTALL ROLL-UP DOORS LEVEL 1	6	11NOV09	18NOV09	-51			INSTALL ROLL-UP DOORS LEVEL 1
52000	INSTALL STOREFRONTS / WINDOWS LEVEL 2	10	24NOV09	09DEC09	-64			INSTALL STOREFRONTS / WINDOWS LEVEL 2
52100	LATH / PAPER EXTERIOR	12	13NOV09	07DEC09	-59			LATH / PAPER EXTERIOR
52200	SCRATCH / BROWN STUCCO	15	23NOV09	15DEC09	-59			SCRATCH / BROWN STUCCO
52300	CURE SCRATCH / BROWN STUCCO	5	16DEC09	22DEC09	-59			CURE SCRATCH / BROWN STUCCO
52500	WATERPROOFING AT BRICK VENEER LOCATIONS	10	23DEC09	07JAN10	-59			WATERPROOFING AT BRICK VENEER LOCATIONS
52600	INSTALL CAST STONE	15	31DEC09	21JAN10	-59			INSTALL CAST STONE
52700	INSTALL BRICK VENEER	20	08JAN10	04FEB10	-59			INSTALL BRICK VENEER
53000	REMOVE SCAFFOLDING	5	05FEB10	11FEB10	-59			REMOVE SCAFFOLDING
53100	INSTALL EXTERIOR CANOPIES	5	12FEB10	18FEB10	-54			INSTALL EXTERIOR CANOPIES
53200	INSTALL CAST METAL SIGNAGE	2	12FEB10	15FEB10	-51			INSTALL CAST METAL SIGNAGE
53250	INSTALL HANDRAILS	3	05FEB10	09FEB10	-47			INSTALL HANDRAILS
53300	INSTALL RIGID ROOF INSULATION	7	20NOV09	02DEC09	-64			INSTALL RIGID ROOF INSULATION
53400	INSTALL ROOFING / FLASHING	5	03DEC09	09DEC09	-64			INSTALL ROOFING / FLASHING
53500	BUILDING DRIED-IN	0		09DEC09	-64			BUILDING DRIED-IN
53600	INSTALL ROOFTOP EQUIPMENT / PIPING	4	10DEC09	15DEC09	-23			INSTALL ROOFTOP EQUIPMENT / PIPING
53650	INSTALL ROOF SCREENS	5	16DEC09	22DEC09	-14			INSTALL ROOF SCREENS
53670	INSTALL UNIT SKYLIGHTS	4	10DEC09	15DEC09	-9			INSTALL UNIT SKYLIGHTS
53700	INSTALL PATIO HARDWOOD DECKING AT ROOFS	3	12FEB10	16FEB10	-52			INSTALL PATIO HARDWOOD DECKING AT ROOFS
<b>POLICE STATION INTERIOR</b>								
61200	LAYOUT / INSTALL HANGERS LEVEL 1	3	21OCT09	23OCT09	-65			LAYOUT / INSTALL HANGERS LEVEL 1
61300	INSTALL SPRINKLER ROUGH-IN LEVEL 1	5	26OCT09	30OCT09	-65			INSTALL SPRINKLER ROUGH-IN LEVEL 1
61400	LAYOUT / INSTALL HANGERS LEVEL 2	3	30OCT09	03NOV09	-67			LAYOUT / INSTALL HANGERS LEVEL 2
61500	INSTALL SPRINKLER ROUGH-IN LEVEL 2	5	04NOV09	10NOV09	-67			INSTALL SPRINKLER ROUGH-IN LEVEL 2
61600	INSTALL MEP MAINS LEVEL 1	5	02NOV09	06NOV09	-65			INSTALL MEP MAINS LEVEL 1
61700	INSTALL MEP MAINS LEVEL 2	5	11NOV09	17NOV09	-67			INSTALL MEP MAINS LEVEL 2
61800	INTERIOR FRAMING / DOOR FRAMES LEVEL 1	12	09NOV09	24NOV09	-65			INTERIOR FRAMING / DOOR FRAMES LEVEL 1

Sheet 10 of 16

**ALTEN CONSTRUCTION, INC.**

**SAUSOLITO PUBLIC SAFETY BUILDINGS**  
02/23/08 UPDATE  
ALL ACTIVITIES

Start Date: 09OCT08  
Finish Date: 06MAY10  
Date Date: 23FEB09  
Run Date: 06MAR09 17:25

60A  
16

© Primavera  
ams, Inc.

Legend:  
 Early Bar  
 Progress Bar  
 Critical Activity

Date	Revision	Checked	Approved



Activity ID	Activity Description	Orig. Dur.	Early Start	Finish	Level	Notes
62000	INTERIOR FRAMING / DOOR FRAMES LEVEL 2	10	18NOV09	03DEC09	-67	INTERIOR FRAMING / DOOR FRAMES LEVEL 2
62100	IN-WALL MEP ROUGH-IN LEVEL 1	15	18NOV09	10DEC09	-65	IN-WALL MEP ROUGH-IN LEVEL 1
62200	IN-WALL MEP ROUGH-IN LEVEL 2	15	25NOV09	17DEC09	-67	IN-WALL MEP ROUGH-IN LEVEL 2
62300	INSULATION LEVEL 1	2	11DEC09	14DEC09	-65	INSULATION LEVEL 1
62400	INSULATION LEVEL 2	2	18DEC09	21DEC09	-67	INSULATION LEVEL 2
62500	INTERIOR DRYWALL / TAPE / FINISH LEVEL 1	15	15DEC09	06JAN10	-65	INTERIOR DRYWALL / TAPE / FINISH LEVEL 1
62550	INSTALL BULLET RESISTIVE CONSTRUCTION	5	18DEC09	24DEC09	-58	INSTALL BULLET RESISTIVE CONSTRUCTION
62600	INTERIOR DRYWALL / TAPE / FINISH LEVEL 2	13	22DEC09	11JAN10	-67	INTERIOR DRYWALL / TAPE / FINISH LEVEL 2
62700	PAINT LEVEL 1	5	07JAN10	13JAN10	-65	PAINT LEVEL 1
62800	PAINT LEVEL 2	5	12JAN10	18JAN10	-67	PAINT LEVEL 2
62900	INSTALL CEILING GRID LEVEL 1	8	14JAN10	25JAN10	-65	INSTALL CEILING GRID LEVEL 1
63000	INSTALL CEILING GRID LEVEL 2	8	19JAN10	28JAN10	-67	INSTALL CEILING GRID LEVEL 2
63100	INSTALL MEP AT ACOUSTICAL CEILINGS / TRIM LEVEL 1	8	18JAN10	28JAN10	-65	INSTALL MEP AT ACOUSTICAL CEILINGS / TRIM LEVEL 1
63200	INSTALL MEP AT ACOUSTICAL CEILINGS / TRIM LEVEL 2	8	21JAN10	02FEB10	-67	INSTALL MEP AT ACOUSTICAL CEILINGS / TRIM LEVEL 2
63300	INSTALL CEILING TILE LEVEL 1	3	29JAN10	02FEB10	-65	INSTALL CEILING TILE LEVEL 1
63400	INSTALL CEILING TILE LEVEL 2	3	03FEB10	05FEB10	-67	INSTALL CEILING TILE LEVEL 2
63500	INSTALL WAINSCOT PANELING LEVEL 2	3	08FEB10	10FEB10	-66	INSTALL WAINSCOT PANELING LEVEL 2
63600	INSTALL CERAMIC TILE WALLS / FLOOR LEVEL 1	4	14JAN10	19JAN10	-40	INSTALL CERAMIC TILE WALLS / FLOOR LEVEL 1
63700	INSTALL CERAMIC TILE WALLS / FLOOR LEVEL 2	12	19JAN10	03FEB10	-51	INSTALL CERAMIC TILE WALLS / FLOOR LEVEL 2
63800	INSTALL PLUMBING FIXTURES LEVEL 1	4	20JAN10	25JAN10	-40	INSTALL PLUMBING FIXTURES LEVEL 1
63900	INSTALL PLUMBING FIXTURES LEVEL 2	6	04FEB10	11FEB10	-51	INSTALL PLUMBING FIXTURES LEVEL 2
64000	INSTALL TOILET PARTITIONS / ACCESSORIES LEVEL 1	2	26JAN10	27JAN10	-40	INSTALL TOILET PARTITIONS / ACCESSORIES LEVEL 1
64100	INSTALL TOILET PARTITIONS / ACCESSORIES LEVEL 2	2	12FEB10	15FEB10	-51	INSTALL TOILET PARTITIONS / ACCESSORIES LEVEL 2
64300	INSTALL LOCKERS LEVEL 2	2	19JAN10	20JAN10	-51	INSTALL LOCKERS LEVEL 2
64400	INSTALL CASEWORK LEVEL 1	5	03FEB10	09FEB10	-65	INSTALL CASEWORK LEVEL 1
64500	INSTALL CASEWORK LEVEL 2	3	08FEB10	10FEB10	-67	INSTALL CASEWORK LEVEL 2
64600	INSTALL KITCHEN EQPT LEVEL 2	1	11FEB10	11FEB10	-67	INSTALL KITCHEN EQPT LEVEL 2
64700	INSTALL DECORATIVE WALL PANELING LEVEL 1	3	19JAN10	21JAN10	-62	INSTALL DECORATIVE WALL PANELING LEVEL 1
64800	INSTALL DECORATIVE METAL RAILING SYSTEM	5	22JAN10	28JAN10	-62	INSTALL DECORATIVE METAL RAILING SYSTEM
64900	INSTALL FRP LEVEL 1	1	14JAN10	14JAN10	-52	INSTALL FRP LEVEL 1
64950	INSTALL FRP LEVEL 2	1	19JAN10	19JAN10	-50	INSTALL FRP LEVEL 2
65000	INSTALL FLOORING LEVEL 1	8	29JAN10	09FEB10	-62	INSTALL FLOORING LEVEL 1
65100	INSTALL FLOORING LEVEL 2	8	12FEB10	23FEB10	-67	INSTALL FLOORING LEVEL 2
65200	INSTALL DOORS & HARDWARE LEVEL 1	5	10FEB10	16FEB10	-62	INSTALL DOORS & HARDWARE LEVEL 1
65300	INSTALL DOORS & HARDWARE LEVEL 2	5	24FEB10	02MAR10	-67	INSTALL DOORS & HARDWARE LEVEL 2

Sheet 11 of 16  
 ALTEN CONSTRUCTION, INC.  
 SAUSOLITO PUBLIC SAFETY BUILDINGS  
 02/23/08 UPDATE  
 ALL ACTIVITIES

Start Date: 08OCT08  
 Finish Date: 06MAY10  
 Data Date: 23FEB09  
 Run Date: 06MAR09 17:25

Legend:  
 ■ Early Bar  
 ■ Progress Bar  
 ■ Critical Activity

6A  
 17  
 © Primavera Systems, Inc.

Activity ID	Activity Description	Orig Dur	Early Start	Early Finish	Total Float
65500	INSTALL INTERIOR SIGNAGE	2	24FEB10	25FEB10	-59
65505	FIELD MEASURE / FABRICATE WINDOW SHADES	40	29DEC09	23FEB10	-59
65520	INSTALL PROJECTION SCREEN	1	10FEB10	10FEB10	-48
65540	INSTALL MARKERBOARD	1	10FEB10	10FEB10	-48
65590	INSTALL FIRE EXTINGUISHERS / CABINETS	1	19JAN10	19JAN10	-32
65600	INSTALL ELEVATOR SHAFTWALLS	10	04DEC09	17DEC09	-61
65700	INSTALL ELEVATOR GUIDERAILS	15	18DEC09	11JAN10	-61
65800	INSTALL ELEVATOR CAR	15	12JAN10	01FEB10	-61
65900	INSTALL ELEVATOR FRONTS	10	02FEB10	15FEB10	-61
66000	ELEVATOR ADJUSTMENT / TESTING	5	16FEB10	22FEB10	-61
66100	ELEVATOR INSPECTION	5	23FEB10	01MAR10	-61
66200	MEP TESTING / BALANCING	10	24FEB10	09MAR10	-67
66300	LIFE SAFETY TESTING / SIGN-OFF	10	24FEB10	09MAR10	-67
66510	INSTALL WINDOW SHADES	2	24FEB10	25FEB10	-59
68000	POLICE STATION SUBSTANTIAL COMPLETION	0		09MAR10	-67
<b>FIRE STATION</b>					
71500	SURVERY BUILDING LINES	10	09OCT08A	22OCT08A	
71520	ROUGH GRADE FIRE STATION SITE	5	23OCT08A	29OCT08A	
71530	FUEL TANKS DISCOVERED - STOP WORK	1	29OCT08A	29OCT08A	
71540	TANK REMOVAL / SOIL TESTING BY CITY	17	30OCT08A	21NOV08A	
71580	DIRECTION TO OVEREX SOIL GIVEN TO ALTEN	1	21NOV08A	21NOV08A	
71580	SCHEDULE / PERFORM OVEREXCAVATION / BACKFILL PIT	4	24NOV08A	01DEC08A	
71570	TESTING OF SPOILS	5	02DEC08A	08DEC08A	
71580	OFFHAUL SPOILS TO HAZ MAT DUMPSITES PER TESTING	4	16DEC08A	18DEC08A	
71590	REDO ROUGH GRADING / IMPORT ADDED SOIL	5	15DEC08A	19DEC08A	
71592	SOIL TOO WET FOR COMPACTION DUE TO RAIN ON 12/21	1	22DEC08A	22DEC08A	
71593	RAIN DAYS 12/23-12/24	2	23DEC08A	24DEC08A	
71595	SURVEY / LAYOUT FOR PILES	2	29DEC08A	30DEC08A	
71597	RFI #31: APPARATUS BAY SLOPE	3	12NOV08A	02DEC08A	
71598	RFI #31 RESPONSE INADEQUATE	3	03DEC08A	02FEB09A	
71599	RFI #46: FOLLOW-UP RE. APPARATUS BAY SLOPE	1	03FEB09A	19FEB09A	
71600	DRIVE / CUT PILES (PILES DRIVEN BY ~1/23)	20	31DEC08A	26FEB09	-38
71610	RAIN DAY 1/5	1	05JAN09A	05JAN09A	
71615	RAIN DAY 1/21-23	1	21JAN09A	23JAN09A	
71620	RAIN DAY 2/6	1	06FEB09A	06FEB09A	

Start Date: 09OCT08

Finish Date: 06MAY10

Date Date: 29FEB09

Run Date: 06MAR09 17:26

Early Bar

Progress Bar

Critical Activity

Sheet 12 of 16

ALTEN CONSTRUCTION, INC.

SAUSOLITO PUBLIC SAFETY BUILDINGS

02/23/08 UPDATE

ALL ACTIVITIES

© Primavera Systems, Inc.

Activity ID	Activity Description	Orig Dur	Early Start	Early Finish	Total Duration	Activity	Notes
71625	RAIN DAY 2/10	1	10FEB09A	10FEB09A			RAIN DAY 2/10
71630	MUD DAY / WORK NOT PROCEEDING 100% 2/11	1	11FEB09A	11FEB09A			MUD DAY / WORK NOT PROCEEDING 100% 2/11
71635	RAIN DAY 2/13	1	13FEB09A	13FEB09A			RAIN DAY 2/13
71640	RAIN DAYS 2/16-17	1	16FEB09A	17FEB09A			RAIN DAYS 2/16-17
71645	MUD DAY 2/18	1	18FEB09A	18FEB09A			MUD DAY 2/18
71650	MUD DAY 2/23	1	23FEB09	23FEB09	-38		MUD DAY 2/23
71660	ADDED HAZ-MAT TESTING	1	02FEB09A	04FEB09A			ADDED HAZ-MAT TESTING
71670	OFF-HAUL SPOILS / RESUME EXCAVATION	1	05FEB09A	10FEB09A			OFF-HAUL SPOILS / RESUME EXCAVATION
71700	CLEANUP / REGRADE	2	26JAN09A	27JAN09A			CLEANUP / REGRADE
71800	EXCAVATE FTGS / PILECAPS	5	21JAN09A	10FEB09A			EXCAVATE FTGS / PILECAPS
71850	PLACE UTILITY SLEEVES	2	16FEB09A	19FEB09A			PLACE UTILITY SLEEVES
71900	REBAR FTGS / PILECAPS	10	27FEB09	12MAR09	-38		REBAR FTGS / PILECAPS
71950	INSTALL EMBEDS / ANCHOR BOLTS	3	13MAR09	17MAR09	-38		INSTALL EMBEDS / ANCHOR BOLTS
72000	PLACE FTGS / PILECAPS (INCL. TRASH ENCLOSURE)	1	18MAR09	18MAR09	-38		PLACE FTGS / PILECAPS (INCL. TRASH ENCLOSURE)
72050	DRILL / INSTALL ELEVATOR RAM	4	19MAR09	24MAR09	-32		DRILL / INSTALL ELEVATOR RAM
72100	FORM / REBAR / PLACE ELEVATOR PIT SLAB / WALLS	10	25MAR09	07APR09	-10		FORM / REBAR / PLACE ELEVATOR PIT SLAB / WALLS
72150	SET COLUMNS / BEAMS AT GL 3, 4, 8, 9	10	19MAR09	01APR09	-38		SET COLUMNS / BEAMS AT GL 3, 4, 8, 9
72200	FORM 1 SIDE WALLS	20	02APR09	29APR09	-38		FORM 1 SIDE WALLS
72300	REBAR WALLS	20	09APR09	06MAY09	-38		REBAR WALLS
72350	INSTALL TEMPLATES / EMBEDS	4	01MAY09	06MAY09	-38		INSTALL TEMPLATES / EMBEDS
72400	SCOTCRETE WALLS	5	07MAY09	13MAY09	-38		SCOTCRETE WALLS
72450	STRIP WALLS	2	14MAY09	15MAY09	-38		STRIP WALLS
72500	INSTALL CMU WALLS (INCL. TRASH ENCLOSURE)	15	25MAR09	21APR09	-20		INSTALL CMU WALLS (INCL. TRASH ENCLOSURE)
72600	INSTALL UNDERGROUND PLUMBING	10	10FEB09A	18FEB09A			INSTALL UNDERGROUND PLUMBING
72700	INSTALL UNDERSLAB ELECTRICAL	15	19MAR09	08APR09	-11		INSTALL UNDERSLAB ELECTRICAL
72750	COMPLETE IN-SLAB MEP	3	18MAY09	20MAY09	-36		COMPLETE IN-SLAB MEP
72800	ROCK / SAND / VAPOR BARRIER	5	18MAY09	22MAY09	-38		ROCK / SAND / VAPOR BARRIER
72850	FORM SLAB ON GRADE	8	26MAY09	04JUN09	-38		FORM SLAB ON GRADE
72900	REBAR SLAB ON GRADE	5	01JUN09	05JUN09	-38		REBAR SLAB ON GRADE
73000	SET SCREEDS	5	04JUN09	10JUN09	-38		SET SCREEDS
73100	INSTALL EMBEDS / ANCHOR BOLTS	3	08JUN09	10JUN09	-38		INSTALL EMBEDS / ANCHOR BOLTS
73200	PLACE SLAB ON GRADE	1	11JUN09	11JUN09	-38		PLACE SLAB ON GRADE
73300	ERECT STEEL FIRE STATION / STAIRS / LAY PAN DECK	30	12JUN09	24JUL09	-38		ERECT STEEL FIRE STATION / STAIRS / LAY PAN DECK
73400	WELD DECKING FIRE STATION	10	20JUL09	31JUL09	-38		WELD DECKING FIRE STATION
73500	EDGE FORM LEVEL 2	7	03AUG09	11AUG09	-38		EDGE FORM LEVEL 2

Start Date: 09OCT08  
 Finish Date: 08MAY10  
 Data Date: 23FEB09  
 Run Date: 06MAR09 17:26

Activity: **SAUSOLITO PUBLIC SAFETY BUILDINGS**  
 Update: **02/23/08 UPDATE**  
 All: **ALL ACTIVITIES**

Company: **ALTEN CONSTRUCTION, INC.**

Sheet 13 of 16

Date: \_\_\_\_\_  
 Revision: \_\_\_\_\_  
 Checked: \_\_\_\_\_  
 Approved: \_\_\_\_\_

6A  
19

Activity ID	Activity Description	Orig Dur	Early Start	Early Finish	Total Float	2008	2009	2010	
73600	INSTALL REBAR LEVEL 2	7	03AUG09	11AUG09	-38				
73700	PLACE LEVEL 2 CONCRETE	1	12AUG09	12AUG09	-38				
73800	STRIP EDGE FORM LEVEL 2	2	13AUG09	14AUG09	-38				
74000	EDGE FORM ROOF	7	12AUG09	20AUG09	-26				
74100	INSTALL REBAR ROOF	7	12AUG09	20AUG09	-26				
74200	PLACE ROOF CONCRETE	1	21AUG09	21AUG09	-26				
74300	STRIP EDGE FORM ROOF	2	24AUG09	25AUG09	-26				
<b>FIRE STATION EXTERIOR</b>									
81200	EXTERIOR FRAMING LEVEL 1	15	17AUG09	04SEP09	-36				
81300	EXTERIOR FRAMING LEVEL 2	15	26AUG09	16SEP09	-26				
81400	SCAFFOLD FIRE STATION	5	09SEP09	15SEP09	-47				
81500	EXTERIOR SHEATHING LEVEL 1	7	16SEP09	24SEP09	-47				
81600	EXTERIOR SHEATHING LEVEL 2	7	10SEP09	18SEP09	-26				
81640	INSTALL FLASHINGS LEVEL 2	4	25SEP09	30SEP09	-32				
81660	INSTALL STOREFRONTS LEVEL 1	12	25SEP09	12OCT09	-28				
81670	INSTALL ROLL-UP DOORS LEVEL 1	6	25SEP09	02OCT09	-22				
81680	INSTALL STOREFRONTS / WINDOWS LEVEL 2	12	01OCT09	16OCT09	-32				
81700	LATH / PAPER EXTERIOR	17	25SEP09	19OCT09	-47				
81800	SCRATCH / BROWN STUCCO	15	09OCT09	29OCT09	-47				
81900	CURE SCRATCH / BROWN STUCCO	5	30OCT09	05NOV09	-47				
82000	FINISH COAT STUCCO	10	06NOV09	19NOV09	2				
82100	WATERPROOFING AT BRICK VENEER LOCATIONS	10	06NOV09	19NOV09	-47				
82200	INSTALL CAST STONE	15	13NOV09	07DEC09	-47				
82300	INSTALL BRICK VENEER	25	20NOV09	29DEC09	-47				
82400	INSTALL PREFAB METAL CORNICE	10	30DEC09	13JAN10	-47				
82500	INSTALL CAST STONE COLUMN CAPITAL	4	14JAN10	19JAN10	-47				
82600	REMOVE SCAFFOLDING	5	20JAN10	26JAN10	-47				
82700	INSTALL EXTERIOR CANOPIES	5	27JAN10	02FEB10	-42				
82800	INSTALL CAST METAL SIGNAGE	2	27JAN10	28JAN10	-39				
82900	INSTALL RIGID ROOF INSULATION	7	21SEP09	29SEP09	-24				
83000	INSTALL ROOFING / FLASHING	5	30SEP09	06OCT09	-24				
83100	BUILDING DRIED-IN	0		16OCT09	-32				
83200	INSTALL ROOFTOP EQUIPMENT / PIPING	4	16DEC09	21DEC09	-23				
83250	INSTALL ROOF SCREENS	5	22DEC09	29DEC09	-18				
83270	INSTALL TUBULAR SKYLIGHTS	4	07OCT09	12OCT09	35				

Sheet 14 of 16

**ALTEN CONSTRUCTION, INC.**

**SAUSOLITO PUBLIC SAFETY BUILDINGS**  
02/23/08 UPDATE  
ALL ACTIVITIES

Start Date	09OCT08	Early Bar	
Finish Date	09MAY10	Progress Bar	
Data Date	29FEB09	Critical Activity	
Run Date	06MARG09 17:26		

© Primavera Systems, Inc.

Activity ID	Activity Description	Orig Dur	Early Start	Earl. Finl.	Total Dur	Activity	Activity Description	Orig Dur	Early Start	Earl. Finl.	Total Dur
83300	INSTALL PATIO HARDWOOD DECKING AT ROOFS	3	30DEC09	04JAN10	-21		INSTALL PATIO HARDWOOD DECKING AT ROOFS	3	30DEC09	04JAN10	-21
<b>FIRE STATION INTERIOR</b>											
91100	LAYOUT / INSTALL HANGERS LEVEL 1	3	17AUG09	19AUG09	-38		LAYOUT / INSTALL HANGERS LEVEL 1	3	17AUG09	19AUG09	-38
91200	INSTALL SPRINKLER ROUGH-IN LEVEL 1	5	20AUG09	26AUG09	-38		INSTALL SPRINKLER ROUGH-IN LEVEL 1	5	20AUG09	26AUG09	-38
91250	LAYOUT / INSTALL HANGERS LEVEL 2	3	20AUG09	24AUG09	-36		LAYOUT / INSTALL HANGERS LEVEL 2	3	20AUG09	24AUG09	-36
91300	INSTALL SPRINKLER ROUGH-IN LEVEL 2	5	27AUG09	02SEP09	-38		INSTALL SPRINKLER ROUGH-IN LEVEL 2	5	27AUG09	02SEP09	-38
91400	INSTALL MEP MAINS LEVEL 1	5	27AUG09	02SEP09	-11		INSTALL MEP MAINS LEVEL 1	5	27AUG09	02SEP09	-11
91500	INSTALL MEP MAINS LEVEL 2	5	03SEP09	10SEP09	-38		INSTALL MEP MAINS LEVEL 2	5	03SEP09	10SEP09	-38
91600	INT. FRAMING / DOOR FRAMES LEVEL 1 & MEZZANINE	8	03SEP09	15SEP09	-11		INT. FRAMING / DOOR FRAMES LEVEL 1 & MEZZANINE	8	03SEP09	15SEP09	-11
91650	FLOOR SHEATHING AT MEZZANINE	2	16SEP09	17SEP09	-1		FLOOR SHEATHING AT MEZZANINE	2	16SEP09	17SEP09	-1
91700	INTERIOR FRAMING / DOOR FRAMES LEVEL 2	15	11SEP09	01OCT09	-38		INTERIOR FRAMING / DOOR FRAMES LEVEL 2	15	11SEP09	01OCT09	-38
91800	IN-WALL MEP ROUGH-IN LEVEL 1 & MEZZANINE	15	09SEP09	29SEP09	-11		IN-WALL MEP ROUGH-IN LEVEL 1 & MEZZANINE	15	09SEP09	29SEP09	-11
91900	IN-WALL MEP ROUGH-IN LEVEL 2	20	25SEP09	22OCT09	-38		IN-WALL MEP ROUGH-IN LEVEL 2	20	25SEP09	22OCT09	-38
91920	INSULATION LEVEL 1 & MEZZANINE	2	19OCT09	20OCT09	-24		INSULATION LEVEL 1 & MEZZANINE	2	19OCT09	20OCT09	-24
91940	INSULATION LEVEL 2	2	23OCT09	26OCT09	-38		INSULATION LEVEL 2	2	23OCT09	26OCT09	-38
92000	INTERIOR DRYWALL / TAPE / FINISH LEVEL 1 & MEZZ	15	21OCT09	10NOV09	-24		INTERIOR DRYWALL / TAPE / FINISH LEVEL 1 & MEZZ	15	21OCT09	10NOV09	-24
92100	INTERIOR DRYWALL / TAPE / FINISH LEVEL 2	15	27OCT09	16NOV09	-38		INTERIOR DRYWALL / TAPE / FINISH LEVEL 2	15	27OCT09	16NOV09	-38
92200	PAINT LEVEL 1 & MEZZANINE	5	11NOV09	17NOV09	-24		PAINT LEVEL 1 & MEZZANINE	5	11NOV09	17NOV09	-24
92300	PAINT LEVEL 2	5	17NOV09	23NOV09	-38		PAINT LEVEL 2	5	17NOV09	23NOV09	-38
92400	INSTALL CEILING GRID LEVEL 1	3	18NOV09	20NOV09	-19		INSTALL CEILING GRID LEVEL 1	3	18NOV09	20NOV09	-19
92500	INSTALL CEILING GRID LEVEL 2	10	24NOV09	09DEC09	-38		INSTALL CEILING GRID LEVEL 2	10	24NOV09	09DEC09	-38
92600	INSTALL MEP AT ACOUSTICAL CEILINGS / TRIM LEVEL 1	3	23NOV09	25NOV09	-19		INSTALL MEP AT ACOUSTICAL CEILINGS / TRIM LEVEL 1	3	23NOV09	25NOV09	-19
92700	INSTALL MEP AT ACOUSTICAL CEILINGS / TRIM LEVEL 2	5	10DEC09	16DEC09	-38		INSTALL MEP AT ACOUSTICAL CEILINGS / TRIM LEVEL 2	5	10DEC09	16DEC09	-38
92800	INSTALL CEILING TILE LEVEL 1	1	30NOV09	30NOV09	-19		INSTALL CEILING TILE LEVEL 1	1	30NOV09	30NOV09	-19
92900	INSTALL CEILING TILE LEVEL 2	3	17DEC09	21DEC09	-38		INSTALL CEILING TILE LEVEL 2	3	17DEC09	21DEC09	-38
93100	INSTALL WAINSCOT PANELING LEVEL 2	3	22DEC09	24DEC09	-36		INSTALL WAINSCOT PANELING LEVEL 2	3	22DEC09	24DEC09	-36
93200	INSTALL CERAMIC TILE WALLS / FLOOR LEVEL 1	15	18NOV09	10DEC09	-24		INSTALL CERAMIC TILE WALLS / FLOOR LEVEL 1	15	18NOV09	10DEC09	-24
93300	INSTALL CERAMIC TILE WALLS / FLOOR LEVEL 2	11	24NOV09	10DEC09	-14		INSTALL CERAMIC TILE WALLS / FLOOR LEVEL 2	11	24NOV09	10DEC09	-14
93400	INSTALL PLUMBING FIXTURES LEVEL 1	4	11DEC09	16DEC09	-12		INSTALL PLUMBING FIXTURES LEVEL 1	4	11DEC09	16DEC09	-12
93500	INSTALL PLUMBING FIXTURES LEVEL 2	6	11DEC09	18DEC09	-14		INSTALL PLUMBING FIXTURES LEVEL 2	6	11DEC09	18DEC09	-14
93600	INSTALL TOILET PARTITIONS / ACCESSORIES LEVEL 1	2	17DEC09	18DEC09	-12		INSTALL TOILET PARTITIONS / ACCESSORIES LEVEL 1	2	17DEC09	18DEC09	-12
93700	INSTALL TOILET PARTITIONS / ACCESSORIES LEVEL 2	2	21DEC09	22DEC09	-14		INSTALL TOILET PARTITIONS / ACCESSORIES LEVEL 2	2	21DEC09	22DEC09	-14
93800	INSTALL TURNOUT LOCKERS LEVEL 1	1	11DEC09	11DEC09	-24		INSTALL TURNOUT LOCKERS LEVEL 1	1	11DEC09	11DEC09	-24
93850	INSTALL LOCKERS LEVEL 2	1	24NOV09	24NOV09	-16		INSTALL LOCKERS LEVEL 2	1	24NOV09	24NOV09	-16
93900	INSTALL CASEWORK LEVEL 1	4	01DEC09	04DEC09	-19		INSTALL CASEWORK LEVEL 1	4	01DEC09	04DEC09	-19

Sheet 15 of 16  
 ALTEN CONSTRUCTION, INC.  
 SAUSOLITO PUBLIC SAFETY BUILDINGS  
 02/23/08 UPDATE  
 ALL ACTIVITIES

090C008  
 06MAY10  
 23FEB09  
 06MAR09 17:26

6A  
 21  
 © Primavera Systems, Inc.

Start Date  
 Finish Date  
 Data Date  
 Run Date

Early Bar  
 Progress Bar  
 Critical Activity

Date  
 Revision  
 Checked  
 Approved





---

**City of Sausalito Public Safety Facilities**  
Police Station 29 Caledonia Street  
Fire Station 333 Johnson Street  
Sausalito, CA

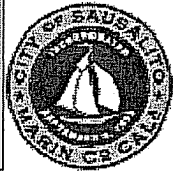
**5. PROJECT NEW CONSTRUCTION BUDGET**

Original Contract Sum:	\$9,266,000.00
Net Change by Change Order:	\$ 88,139.60
Contract Sum to Date:	\$9,354,139.60
Total Completed and Stored to Date:	\$1,838,232.98
Less Previous Certificates of Payment:	\$1,270,841.45
Balance to Finish:	\$7,515,906.62
Project Percentage Complete:	19%

Change Order #1 was approved for Alten Instruction in the amount of \$88,139.60

The Change Order amount noted includes the following items:

- 1) Tank Removal Costs
- 2) Removal and Storage of streetlights
- 3) Removal of unforeseen footings



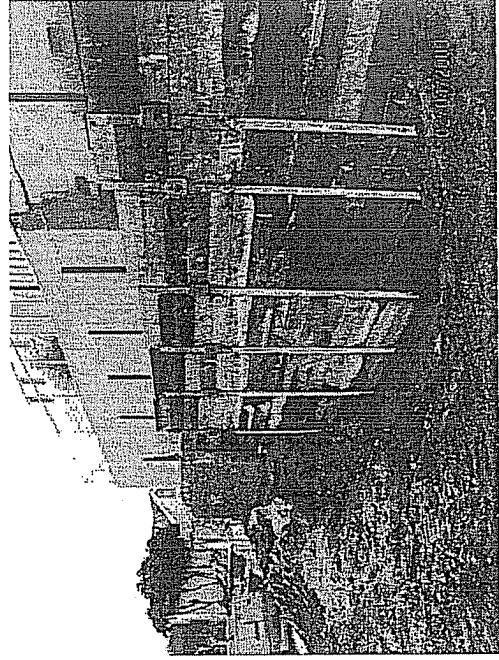
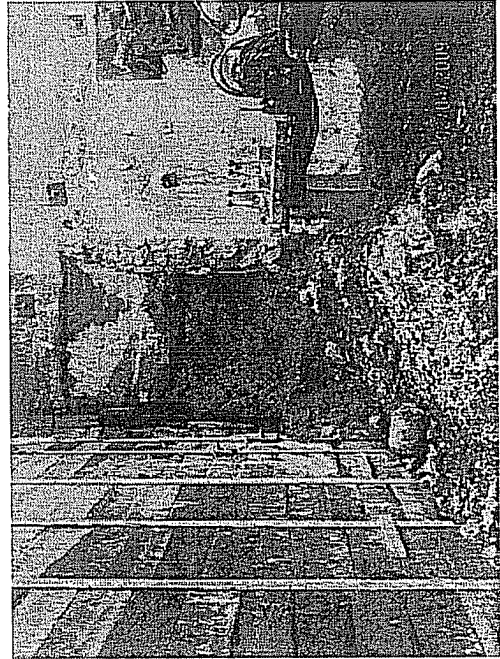
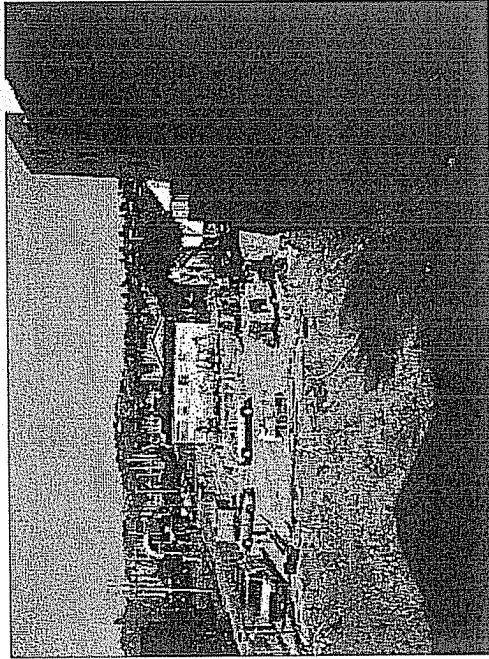
**City of Sausalito Public Safety Facilities**  
**Police Station 29 Caledonia Street**  
**Fire Station 333 Johnson Street**  
**Sausalito, CA**

**6. PROJECT PROGRESS PHOTOS**

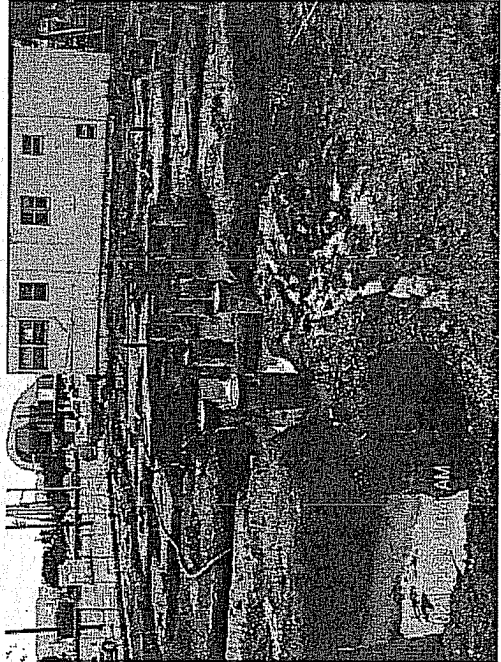
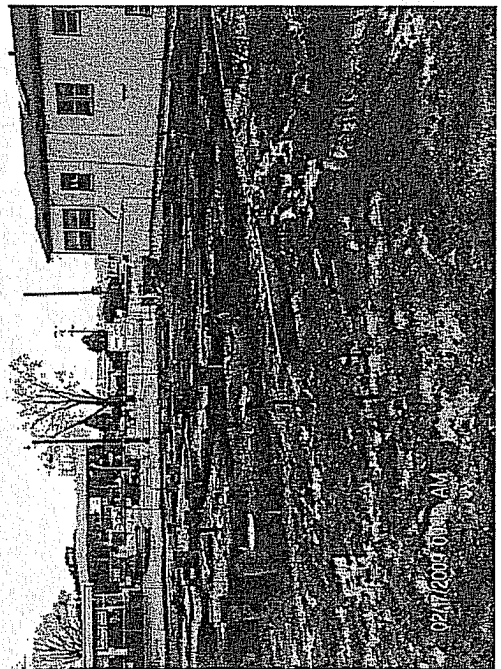
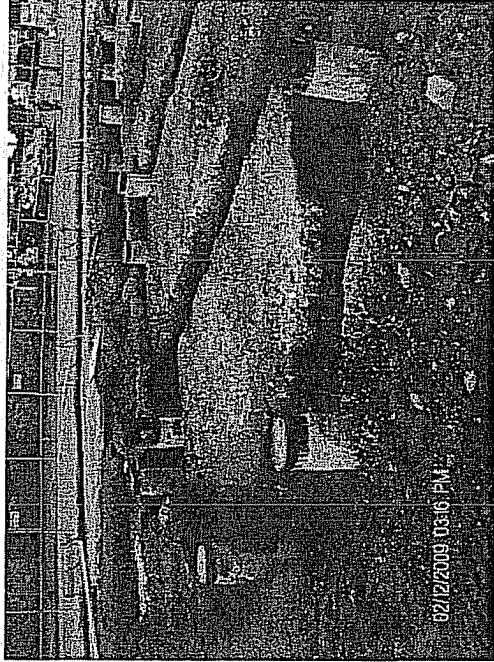


# Early February view of jobsite from West, and temporary

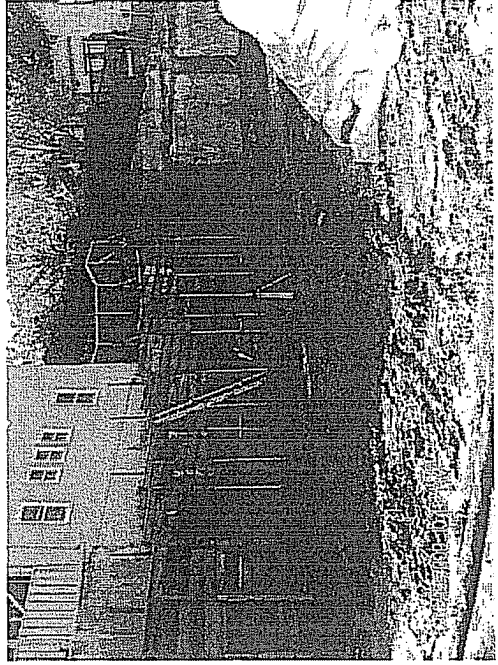
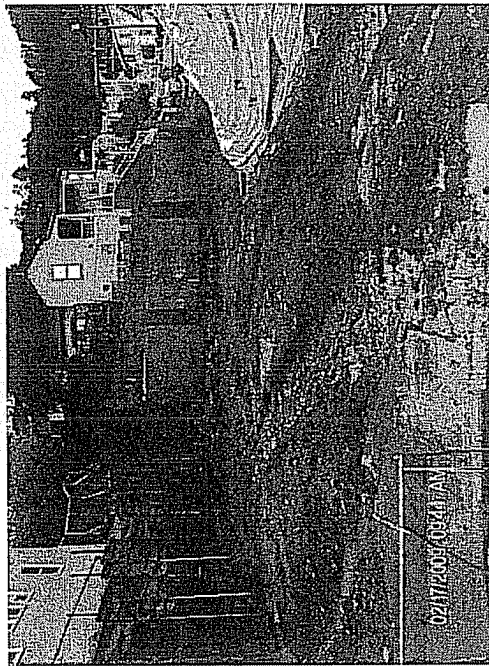
## shoring installation proceeding



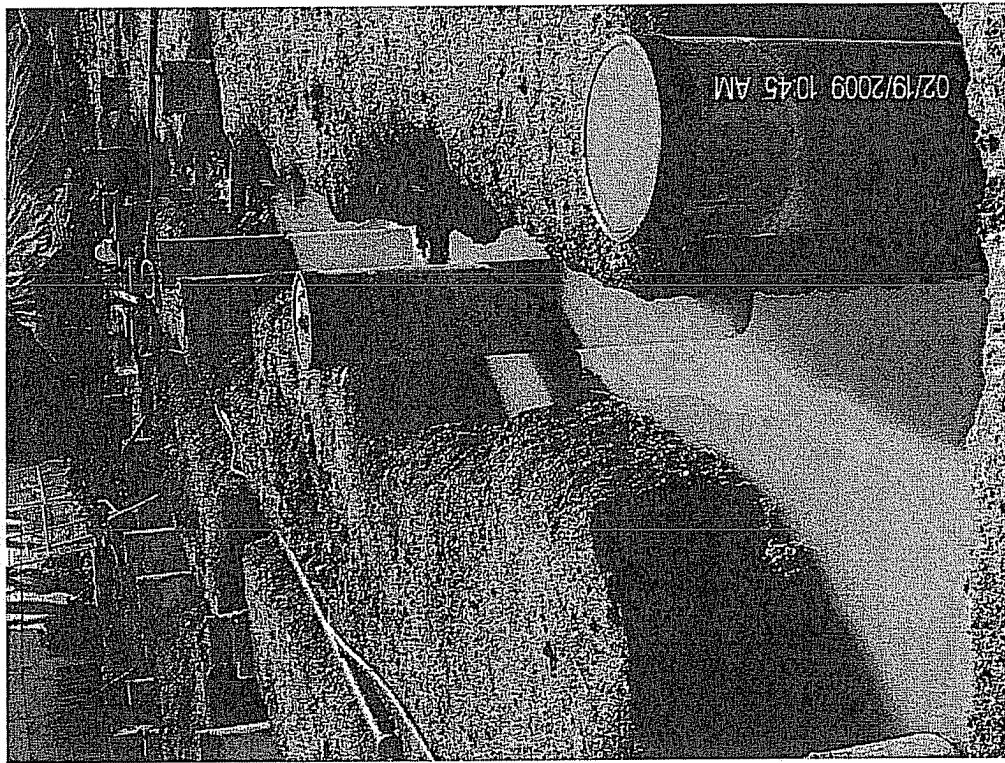
# Fire Department site, showing heavy rains and water on-site



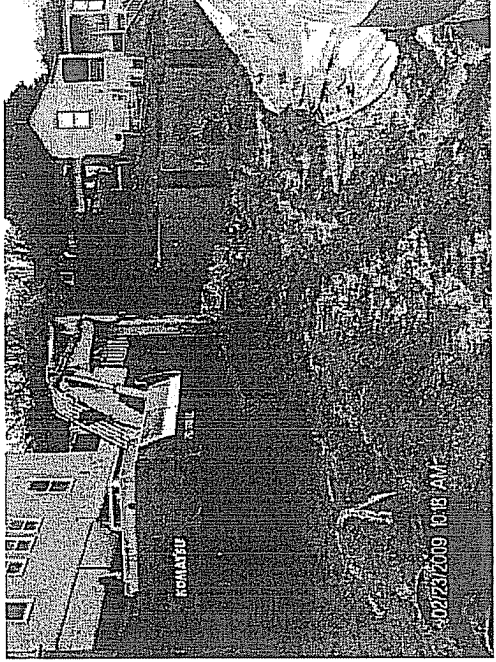
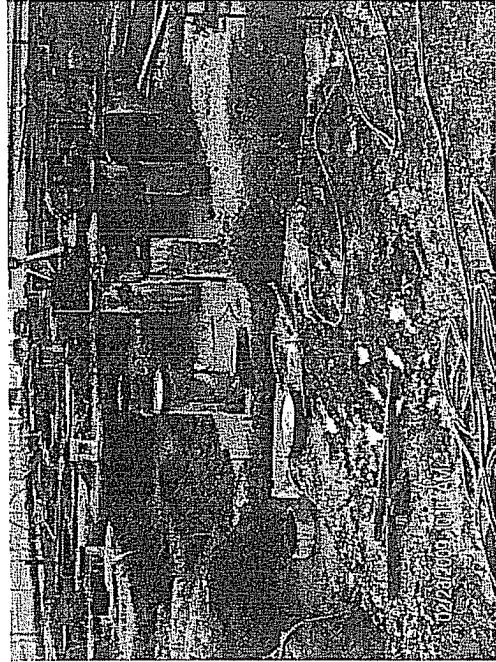
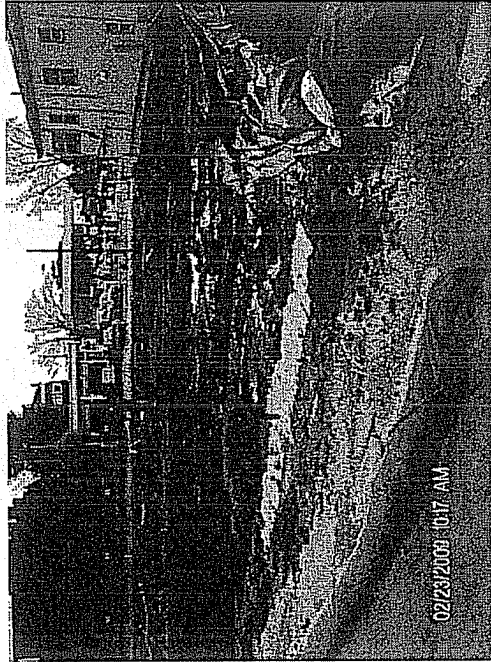
# Views of Police Station Site with impact of rains



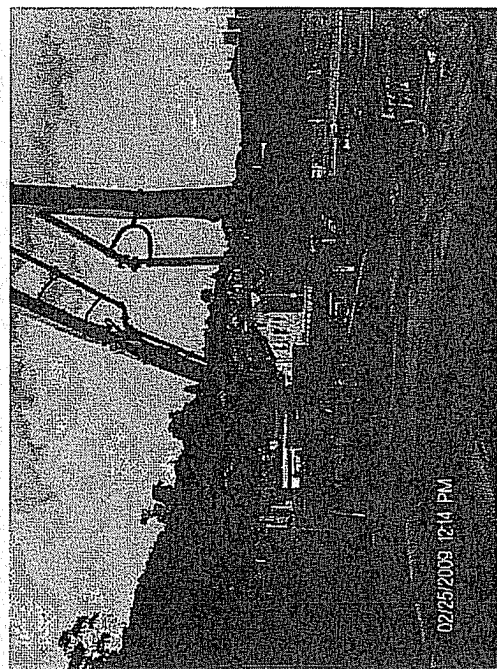
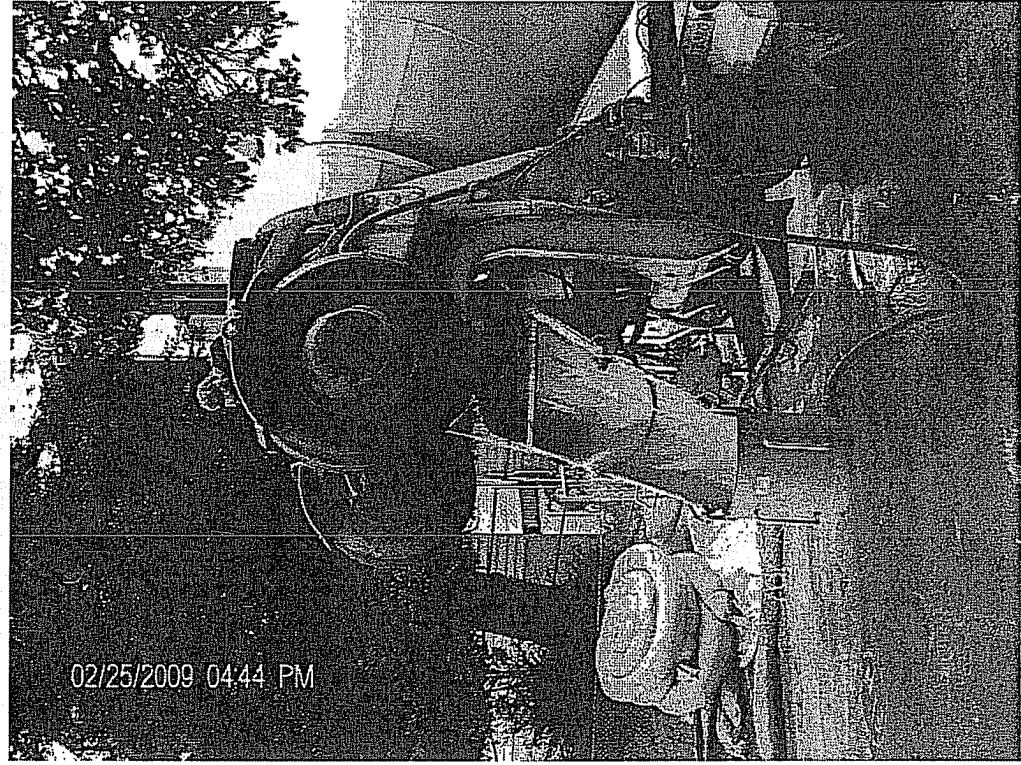
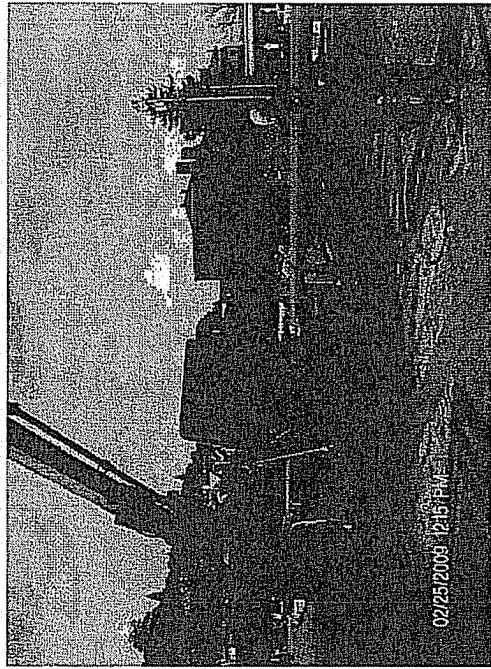
Significant water at Fire Department site before dewatering, in upper left, note small piles of mud from cleaning out trenches



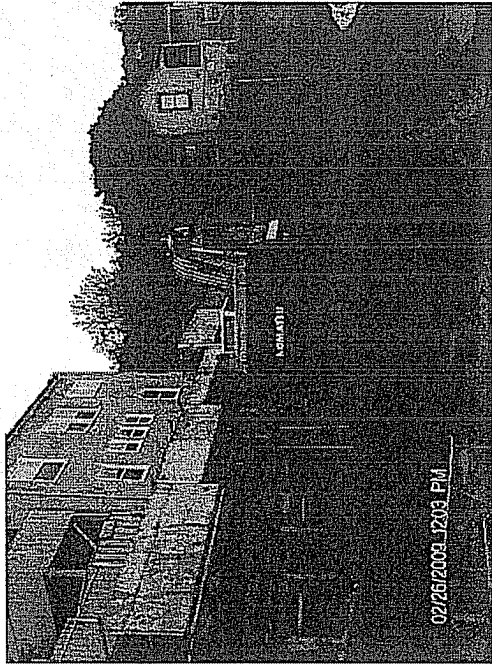
# Late February views of wet site due to rains



Getting ready to pour lean concrete around piles. Note hose at bottom of sluice, photo on right, recycles water back into truck, no concrete waste left on-site.



# Continuing wet soil conditions at Police Department site



# Views of Pile Caps at Fire Department site, and shotcrete test panels

