



STAFF REPORT

SAUSALITO CITY COUNCIL

AGENDA TITLE:

Amendment to Professional Services Agreement – Non-Motorized
Transportation Program – Bridgeway to Ferry Landing Improvements

RECOMMENDED MOTION:

1. Adopt a Resolution of the City Council of the City of Sausalito Authorizing the City Manager to Execute Amendment No. 1 to Professional Services Agreement with Royston Hanamoto Alley & Abbey for Construction Plan Preparation for Non-Motorized Transportation Project - Bridgeway to Ferry Landing Improvements.
2. Authorize use of Measure A funds, Parking Lot Revenues, and ADA Improvement Budget funds for said Professional Services Agreement with Royston Hanamoto Alley & Abbey.

SUMMARY

On March 24, 2009 the City Council awarded a Professional Services agreement to Royston Hanamoto Alley & Abbey to provide design services for the Non-Motorized Transportation Pilot Program Project called "Bridgeway to Ferry Landing Improvements." Getting from concept to Planning Commission design review approval exhausted the funds previously authorized as a result of coordinating with Parking Operations efforts to respond to community concern with the design. Additional work is needed to prepare construction Plans, Specifications and detailed estimate.

Amendment No. 1 is attached to authorize the additional work. The estimate for Amendment 1 is _____ bringing the total to \$47,515+

Staff recommend the City Council adopt Resolution _____ approving Amendment No. 1

BACKGROUND

The City of Sausalito was awarded a grant of \$200,000 to install improvements between the Ferry Landing and Bridgeway to improve transportation facilities that improve circulation on foot, by bicycle or by transit.

Item #: 6B
Meeting Date: November 17, 2009
Page #: 1

At the time of the grant award, the scope of the improvements were broad and general. The City hired Royston Hanamoto Alley & Abbey (RHAA) to assist the City in designing improvements that met the objective of the grant and addressed the needs of the City.

RHAA developed a plan that was approved by Planning Commission on November 4, 2009. The design provides for improved pedestrian facilities on Anchor, Bay Street and portions of Humbolt, and provides for potential future bicycle facilities, does not limit possible future changes in operation at the abutting Parking Lots, and does not limit future changes to the Transit and Tour Bus Operations or other possible future transit modes.

The Design took into account direction from the City Council as well as ideas described in reports prepared by community members (including but not limited to the Final Report of the Downtown and Harbor Action Committee). The design took into account formal Planning Documents including the Sausalito Bicycle Plan, County-wide Bicycle Plans (Including Bicycle Plan, 1974 Bikeway Policy Document, North-South Greenway Feasibility Study, 1994), it took into account issues of concern to Business Operators and their Landlords, It finally took into account park users and city residents seeking an improved experience in the downtown area. The design was coordinated with two other projects: The NMTTP Path Plan near Bridgeway between Gate 6 Road and the Ferry Landing as well as the Parking Lot Payment and Revenue Collection System Project.

The design that met the various community needs required the evaluation of circulation by pedestrians, bicyclists, transit operators and motor vehicle parkers. A limited study was performed to determine opportunities and constraints within the right-of-way of Anchor Street, Bay Street and Humbolt. A facility in and parallel to Humbolt emerged as the likely route for a facility for pedestrians and less experienced cyclists. To create a route that worked within the identified constraints required development and consideration of more than a dozen concepts. These concepts were considered and vetted through the Council OMIT Committee, City Staff and consultants from coordinating projects. A preferred design was finalized in early September after getting started in Mid-July.

The RHAA Preferred Alternative design was circulated to interested parties attending a NMTTP Path Plan Technical Advisory Committee Meeting on September 15th, a briefing presentation was developed for the Sausalito Chamber of Commerce on October 13th, 2009. Formal Public Presentation was made on October 14th, 2009 at the Planning Commission. Public feedback was made at the Planning Commission public hearing including presentation of an alternative plan developed by Michael Rex that appeared to be more visually consistent with ideas in the Downtown and Harbor Action Committee Final Report. This alternative had support by members of the Downtown and Harbor Action Committee(DHAC), the Marin Bicycle Coalition and Transportation Alternatives for Marin. The RHAA plan was criticized for apparently excluding the recommendations of the DHAC. This claim was unfounded as recommendations were

considered. The biggest idea in the report, diagonal bus parking wasn't advanced due to the infeasibility of acquiring additional right-of-way in a limited period of time and loss of bus parking capacity which would negatively impact City revenues. Other problems remained including significant design liability due to unorthodox turning operations and travel mode conflicts in intersections. These issues weren't discussed at the hearing as the Rex Plan was not being considered. It was offered as a rebuttal. The Planning Commission continued the item until November 4 to allow resolution of the issues raised in the hearing.

Meetings with the Council OMIT Committee were held on 10/19/2009 and 10/26/2009 to brief the Council on the feedback received and to seek direction on next steps. OMIT directed staff to revise and scale back the plan to meet funding levels focusing on improvements along Anchor Street, then Bay Street, then Humboldt, in that priority. Staff invited all interested parties who had expressed opinions on the project to a meeting on 10/27/2009. A scaled back plan was agreed upon. This plan was submitted to the Planning Commission for approval. The Planning Commission approved the plan with some minor revisions, the most notable being that the new sidewalks are to be 8 feet wide. A copy of the Plan presented to the Planning Commission at their 11/4/2009 Meeting is attached.

The effort to develop and consider alternatives, meetings with City staff, consultant staff working on Parking and Revenue Collection Systems project, developing exhibits for public outreach and attending numerous meetings to reach a design with broad community support has nearly exhausted authorized budget. The consultant has advised that there is insufficient remaining budget to advance the project to construction. A proposal has been prepared to augment the budget to allow construction plans to be prepared and related tasks to get the project in the ground.

ISSUES

Why continue

Opinions had been expressed that improvements are not needed. Demand is currently low for bicycle facilities, other than parking, in the project area. The deliberations acknowledge that point. The design, however, anticipates potential future facilities as has been identified in City and County Planning Documents. The proposed work on Anchor Street is expected to enhance the downtown experience for pedestrians and bus users with widened a widened sidewalk. The proposed work on Bay Street is also expected to enhance the downtown experience as well a eliminate potential discrimination claim as a result of facilities not in compliance with ADA Guidelines. The plans approved by the Planning Commission address the back to basics concepts that are continuing to resonate with the community.

How to pay for the additional work

See suggestions in the Fiscal Impacts section.

FISCAL IMPACT

Design work previously authorized was funded by Marin County Measure A funds which can be used for transportation purposes such as this work. Construction is currently structured to be funded from the Grant.

The proposed additional work could also be funded by Measure A funds. Alternatively because Parking Lot entrance changes are involved to coincide with the changes in the Parking and Revenue Collections System, use of parking revenues is possible. Addressing ADA deficiencies is a budgeted project in the Capital Improvement Plan. Additional design work could be funded as a part of that project. The area may be eligible for the use of Tidelands Funds. Staff is proposing a combination of the above with funding to be divided as follows:

- 20% Parking Fund
- 40% ADA Improvements Project
- 40% Measure A Funds

A requisition has not been prepared given the sensitive nature of this project.

STAFF RECOMMENDATIONS

Adopt a Resolution of the City Council of the City of Sausalito approving Amendment No. 1 to Professional Services Agreement and authorizing the City Manager to execute the Amendment No. 1 to Professional Services Agreement with Royston Hanamoto Alley & Abbey for services to enable construction of Non-Motorized Transportation Routes project entitled Bridgeway to Ferry Landing Improvements. The authorized amount shall not exceed \$_____.

Alternatively, Council can provide staff direction regarding the budget structure and allocation for future consideration; or

Council can not approve the award and not provide staff budget structure and allocation direction and instead direct staff to notify Marin County and Caltrans of the City's desire to return the funds for other NMTTP efforts.

ATTACHMENTS

1. Resolution
2. Amendment No. 1 to Professional Services Agreement
3. Design Submitted to Planning Commission for 11/4/09 Design Approval

PREPARED BY:



Todd Teachout,
City Engineer

REVIEWED BY (Department Head):



Jonathon Goldman,
Director of Public Works

REVIEWED BY (City Attorney):

Mary Wagner,
City Attorney

REVIEWED BY:

Charles Francis,
Acting Director of Finance

SUBMITTED BY:

Adam W. Politzer
City Manager

Item #: 6B
Meeting Date: November 17, 2009
Page #: 5

RESOLUTION ___-09

**RESOLUTION OF THE CITY COUNCIL OF THE CITY OF SAUSALITO
APPROVING AMENDMENT NO. 1 TO PROFESSIONAL SERVICES AGREEMENT
TO AND AUTHORIZING THE CITY MANAGER TO EXECUTE AMENDMENT NO. 1
TO PROFESSIONAL SERVICES AGREEMENT WITH ROYSTON HANAMOTO
ALLEY & ABBEY FOR ADDITIONAL SERVICES TO ENABLE CONSTRUCTION OF
THE NON-MOTORIZED TRANSPORTATION PROJECT ENTITLED BRIDGEWAY
TO FERRY LANDING IMPROVEMENTS NMTP-5098(010)**

WHEREAS, the City Council adopted the 2009/10 Annual Budget which includes resources for a project to construct non-motorized transportation improvements between the Ferry Landing and Bridgeway; and

WHEREAS, the City was awarded a Federal Non-Motorized Transportation Pilot Program Grant to implement a project entitled "Bridgeway to Ferry Landing Improvements" and is eligible to receive Federal and/or State funding from the California Department of Transportation; and

WHEREAS, the City executed a Professional Services Agreement with Royston Hanamoto Alley and Abbey to develop plans for said Bridgeway to Ferry Landing Improvements; and

WHEREAS, as a result of extensive design work to coordinate with nearby Parking Projects and to respond to high level of interest about the said project by the community, authorized budget is nearly exhausted and additional funds are needed to develop construction plans, develop necessary environmental documents, and provide design services during construction; and

WHEREAS, Amendment No. 1 to Professional Services Agreement is prepared to enable additional services, and

WHEREAS, at its November 17, 2009 regular meeting the City Council heard and considered comments and concerns about the proposed scope of services.

NOW, THEREFORE, the City Council of the City of Sausalito does hereby resolve as follows:

1. Approves of Amendment No. 1 to the Professional Services Agreement is hereby awarded to Royston Hanamoto Alley and Abbey.
2. The City Manager is authorized to execute Amendment No. 1 to the Professional Services Agreement with Royston Hanamoto Alley and Abbey on behalf of the City with a budget of not to exceed \$_____.

Item #: 6B
Meeting Date: November 17, 2009
Page #: 87

3. Authorizes the appropriation of up to \$_____ allocated 20% to the Parking Fund Professional Services Account, 40% to General Capital Projects – ADA Improvements, 40% Measure A Professional Services Account.

PASSED AND ADOPTED at a regular meeting of the City Council of the City of Sausalito on the 17th day of November, 2009, by the following vote:

AYES: Councilmembers:
NOES: Councilmembers:
ABSTAIN: Councilmembers:

Mayor, City of Sausalito

ATTEST:

City Clerk

Item #: 6B
Meeting Date: November 17, 2009
Page #: 58

This **FIRST AMENDMENT TO PROFESSIONAL/CONSULTING SERVICES AGREEMENT**, (this "Amendment") is made and entered into this ___ day of November, 2009, by and between the **CITY OF SAUSALITO**, a municipal corporation (hereinafter "City") and Royston Hanamoto Alley & Abbey (hereinafter "Consultant").

RECITALS

The following Recitals are a substantive part of this Agreement:

A. City and Consultant entered into a Professional/Consulting Services Agreement dated as of March 24, 2009 (the "Agreement"). Pursuant to the Agreement, the Consultant provides the City with certain services related to the Non-Motorized Transportation Pilot Program, Bridgeway to Ferry Landing Improvements Project.

B. The City wishes to utilize Consultant to provide additional Professional Services as outlined in the attached Scope of Work in addition to the services currently being provided.

C. City and Consultant desire to enter into this Amendment to include the provision of such services.

In consideration of the mutual promises contained herein, the parties hereto agree as follows:

Section 1. Scope of Work

Section 1 of the Agreement is hereby amended to provide that in addition to the services set forth in Exhibit A of the Agreement Consultant shall also provide City with Services set forth in Additional Scope of Services which includes "Confirmation of Additional Services No. 1 prepared by CSW/Stuber-Stroeh dated August 28, 2009.

Section 2. Schedule

Section 3 of the Agreement is amended to indicate that the Scope of Work as amended shall be completed in sufficient time to enable request for construction bids as soon as possible after January 1, 2010 and no later than February 26, 2010.

Section 3. Compensation.

Section 4 of the Agreement is amended to provide that in consideration of the additional Work to be performed by the Consultant as set forth in Section 1 of this Amendment Consultant shall be compensated in an amount not to exceed \$62,275 (\$47,515 originally and adding \$ _____ with this amendment) without additional authorization.

Item #: 63
Meeting Date: November 17, 2009
Page #: 89

Section 4. Effect on Agreement.

Except as expressly set forth herein, the terms and conditions of the Agreement shall remain in full force and effect. In the event of any inconsistency between the Agreement and this Amendment, the terms of this Amendment shall control.

Section 5. Entire Agreement; Conflicts.

This Amendment and the Agreement contain the entire agreement between the parties with respect to the subject matter hereof. Except as otherwise specified herein, no prior oral or written understanding shall be of any force or effect with respect to those matters covered herein. This Amendment and the Agreement shall not be modified or altered except in writing signed by both parties.

In Witness Whereof, City and Consultant have executed this Amendment as of the date first written above.

City of Sausalito

Consultant

By: Adam W. Politzer
Its: City Manager

By: _____
Its: _____

approved as to form:

Mary Anne Wagner
City Attorney

Item #: 608
Meeting Date: November 17, 2009
Page #: 8-10

Date: August 28, 2009

File: 3.1607.00

Ms. Manuela Anne King
RHAA
225 Miller Avenue
Mill Valley, CA 94941

**RE: SAUSALITO ANCHOR/ BAY TOPO BOUNDARY
(RHAA PROJ. NO. 09014-A)
CONFIRMATION OF ADDITIONAL SERVICES NO. 1
IMPROVEMENT PLANS**

Dear Manuela:

Please accept this letter as the CSW/Stuber-Stroeh Engineering Group, Inc. (CSW|ST2) proposal to provide professional civil engineering and surveying services for the Anchor Street, Bay Street and Humboldt Avenue Improvement Plans in Sausalito. This letter establishes a scope of services, fee, and schedule.

SCOPE OF SERVICES

CSW|ST2 agrees to provide the following documents and services.

A. SUPPLEMENTAL SURVEY

CSW|ST2 will provide additional survey that will acquire invert elevations necessary for the development of the Grading Plans described below.

B. CONSTRUCTION DOCUMENTS PHASE

1. Improvement Plans

CSW|ST2 will prepare the following information according to the requirements of the City of Sausalito:

- a. Cover Sheet (plan set size 30"x42"): This sheet will depict location map, general notes and sheet index.
- b. Grading and Drainage Plan: Grading and Drainage plan will show the new site layout, including curbs, planters, sidewalks, and ramps as

Ms. Manuela Anne King
RHAA
August 28, 2009
Page 2

provided by RHAA. The grading will show existing topography and proposed grading within improved areas. We will also identify location of existing and proposed storm drain pipes as provided by the City of Sausalito and related drainage structures as necessary. We will provide up to four typical sections to reflect the new grading at the property lines or other critical areas.

Specifically excluded are storm drainage calculations and calculations relating to earthwork quantities.

- c. Sanitary Sewer Improvements There are no proposed improvements anticipated for the sanitary sewer except the adjustment of manhole lids during construction. However, the plan will include the location and size of the existing sewer with invert elevations, manholes, and cleanouts based on available as-built information. (To be provided by the City of Sausalito.)
 - d. Utility Investigation: CSW|ST2 will meet with PG&E to discuss modifications to their facilities that will be effected by the project. CSW|ST2 will also contact MMWD for mapping of their facilities and as they relate to the project. Any water and/or power/gas relocations that would be required will be addressed as additional work.
 - e. Erosion Control Plan: CSW|ST2 will prepare an Erosion Control plan to depict the use of Best Management Practices (BMP's) to reduce the affects of erosion from this project.
 - f. Notes and Details: CSW|ST2 will include general notes and details relation to grading and drainage. This information will be incorporated throughout the plan set. Other standard details will be taken from the UCS Standard Details for the Cities and County of Marin and referenced as such.
 - g. Storm Water Control Plan: We will prepare a Storm Water Control Plan that reflects the proposed drainage management area, as well as sizing for Integrated Management Practice (IMP) per the Storm Water Quality Manual for Development Projects in Marin County.
2. Response to Comments: Project will be subject to review by the City of Sausalito. CSW|ST2 will provide two (2) rounds of responses to comments from reviewing agency. Additional responses will be billed as Additional Services. If any major design/layout revisions are requested by the City that work will be considered additional work and subject to additional fees.

Ms. Manuela Anne King
 RHAA
 August 28, 2009
 Page 3

3. Meetings: CSW | ST2 will be available to attend meetings to discuss the scope of the project, assist in design development, and participate in meetings with City staff as requested. As the exact number of meetings necessary have not been determined, we provided an allowance for meetings, including time for one meeting previously attended.

Any services beyond those specifically outlined above will be billed as Additional Services. The inclusion of Additional Services to the Scope of Work will require written amendment to the contract to be signed by the client and CSW | ST2 before the Additional Services are to be provided. (See Additional Services)

FEES

CSW | ST2 agrees to provide the services described above on a fixed fee basis to be billed monthly in accordance with our current Hourly Rates and Billing Schedule (enclosed):

A.	Supplemental Survey	\$ 960.00
B.	Construction Documents	
1.	Improvement Plans	\$ 9,900.00
a.	Cover Sheet/Details/Notes	\$ 500
b.	Grading and Drainage Plan	\$ 3,100
c.	Sanitary Sewer Improvements	N/A
d.	Utility Investigation	\$ 1,200
d.	Erosion Control Plan	\$ 1,100
e.	Notes and Details	\$ 1,500
f.	Storm Water Control Plan	\$ 2,500
2.	Response to Comments (Two Rounds)	\$ 2,100.00
3.	Meetings (Budget Allowance)	\$ 1,800.00
<hr/>		
	TOTAL, ITEMS A-B	\$ 14,760.00

Invoices for services rendered will be issued on a monthly basis. Payment terms are net 30 days from the date of the invoice. Late payments are subject to interest charges at the rate of 18% per annum.

Reimbursable costs for printing, supplies, agency submittal/permit fees, travel and other miscellaneous or incidental expenses will be billed in addition to the amounts shown above in accordance with our enclosed Billing Policy. "Additional Services" that have not been included in this proposal because of undefined or unknown work scope can be added to our

68
13

Ms. Manuela Anne King
RHAA
August 28, 2009
Page 4

scope of work by issuance of a confirmation when the scope is defined. Additional Services will be performed on a time and expense basis or fixed fee based upon a defined scope of work. Additional Services will be billed in accordance with our then current Hourly Rates and Billing Policy.

CLIENT TO PROVIDE

The following is a list of items to be provided to us in order to perform the above Scope of Services:

- Current Preliminary Title Report
- Site Plan in AutoCAD format

ADDITIONAL SERVICES

CSW | ST2 agrees to perform all of the items listed in the Scope of Services. However, the following items are excluded from the Scope of Services of this contract. They may be added at the request of the Owner as a revision to this proposal, or under a future proposal or amendment. Fees for these services will be billed on a time and expense basis with a budget estimate provided or for a fixed fee based upon a defined scope of work.

Additional items CSW | ST2 can provide include (but are not limited to):

- Legal Descriptions
- Construction Administration
- Construction Staking
- Bidding and Permit Assistance
- Structural Design
- Opinion of Probable Cost
- Storm Drainage Calculations
- Joint Trench Design

EXCLUSIONS

The following items are excluded from the Scope of Services of this contract. These services are not provided by CSW | ST2. However, we would be willing to assist the client in locating a consultant to supply these services.

- Geotechnical Engineering (Investigation, Report, Services)
- Electrical Engineering

6B
14

Ms. Manuela Anne King
RHAA
August 28, 2009
Page 5

SCHEDULE

CSW|ST2 can begin work immediately after receiving the signed work authorizations, the initialed Standard Provisions of Agreement Between Client and Consultant and any Client Provided items listed in this contract.

Since we have not been involved with the design review process, we propose to submit a preliminary set of plans to the Client and Architect to review at 25 percent complete. This will allow us to work out any design development issues early in the process.

We expect to allocate approximately four weeks for the preparation of the 25 percent complete set, and following receipt of comments from the project team, we expect to allocate six weeks for the preparation of the project documents for the first submittal to the various agencies.

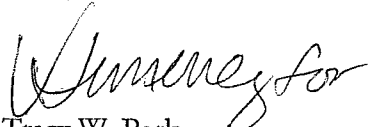
If this proposal is acceptable, please sign both copies of the enclosed Work Confirmation and initial each page of the Standard Provisions of Agreement Between Client and Consultant. Please return both complete sets of documents to our office as your authorization to proceed. We will return a signed set to you for your records.

If you have any questions or wish to modify the Scope of Services, please call me at (415) 883-9850 or contact me via email at TracyP@cswst2.com.

Thank you for considering CSW|ST2 to assist you in the development of your project. We look forward to working with you and your team.

Sincerely,

CSW/STUBER-STROEH ENGINEERING GROUP, INC.


Tracy W. Park
P.L.S. #8176, Expires 12/31/10

TWP:vmj
Enclosures

CONFIRMATION OF ADDITIONAL SERVICES

File No.: 3.1607.00 Confirmation No.: 1 Date: August 28, 2009
Project: SAUSALITO ANCHOR/ BAY TOPO BOUNDARY (RHAA PROJ. NO. 09014-A)
Client: RHAA, Attention Manuela Anne King

DESCRIPTION OF WORK:

See Proposal Letter dated August 28, 2009.

ORIGINAL CONTRACT PRICE:	(Per Contract Dated: 08-13-2009)	\$	12,200.00
Net Changes by Previously Authorized Additional Services:		\$	0.00
Contract Sum Prior to this Confirmation:		\$	12,200.00
Amount Contract will be INCREASED / DECREASED for these services:		\$	14,760.00
REVISED CONTRACT PRICE:	(Per Date of this Confirmation)	\$	26,960.00
This Completion Time will be Adjusted as follows:			N/A

THE CONTRACT PRICE OF THE ABOVE-REFERENCED CONTRACT IS HEREBY ADJUSTED AS DESCRIBED IN THIS CONFIRMATION OF ADDITIONAL SERVICES AND AS PROVIDED IN PARAGRAPH 29 OF THE "CSW|STUBER-STROEH ENGINEERING GROUP, INC. CONTRACT TERMS AND CONDITIONS (FORM A)." IF WE DO NOT RECEIVE WRITTEN AUTHORIZATION WITHIN THREE BUSINESS DAYS AND PROCEED WITH THE WORK COVERED BY THIS CONFIRMATION, THE CONFIRMATION WILL HAVE THE SAME EFFECT AS IF IT WERE SIGNED. ALL OF THE TERMS, COVENANTS AND CONDITIONS OF THE ABOVE-REFERENCED CONTRACT, AND THE ASSOCIATED "CSW|STUBER-STROEH ENGINEERING GROUP, INC. CONTRACT TERMS AND CONDITIONS (FORM A)," EXCEPT AS DULY MODIFIED BY THIS AND PREVIOUS CONFIRMATIONS, IF ANY, REMAIN IN FULL FORCE AND EFFECT.

PLEASE SIGN AND RETURN BOTH COPIES OF THIS CONFIRMATION. WE WILL RETURN A SIGNED COPY TO YOU FOR YOUR RECORDS.

APPROVALS

CLIENT: RHAA

CONSULTANT: CSW|STUBER-STROEH
ENGINEERING GROUP, INC.

BY: _____

BY: _____ 

TITLE: _____

TITLE: James Grossi, Jr., R.C.E. #26538, Exp. 3/31/10

DATE: _____

DATE: _____

68
16



CSW/Stuber-Stroeh Engineering Group, Inc.

Engineers | Land Planners | Surveyors | Landscape Architects

HOURLY RATES AND BILLING POLICY

Effective May 1, 2009 the following hourly rates will be charged for services rendered. (Rates subject to change):

<u>Civil and Structural Engineering</u>	<u>Hourly Rates</u>	<u>Land Planning / Landscape Architecture</u>	<u>Hourly Rates</u>
Principal	\$ 210.00	Senior Planner	\$ 142.00 - \$ 158.00
Senior Project Manager	\$ 157.00 - \$ 200.00	Planner II	\$ 137.00
Project Manager II	\$ 157.00 - \$ 168.00	Planner I	\$ 120.00
Project Manager I	\$ 142.00 \$ 157.00	Landscape Architect II	\$ 137.00
Senior Project Engineer	\$ 142.00 - \$ 200.00	Landscape Architect I	\$ 120.00
Engineer II	\$ 99.00 - \$ 127.00	Landscape Designer	\$ 93.00
Engineer I	\$ 99.00 - \$ 110.00		
Senior Designer	\$ 126.00 - \$ 137.00		
Designer II	\$ 105.00 - \$ 121.00		
Designer I	\$ 99.00 - \$ 110.00		
Technician III	\$ 95.00		
Technician II	\$ 90.00		
Technician I	\$ 76.00		
Administrative Manager	\$ 74.00		
Senior Project Assistant	\$ 74.00		
Project Assistant	\$ 74.00		
Construction Administration	\$ 157.00 \$ 168.00		

<u>Surveying</u>	<u>Hourly Rates</u>	<u>Environmental Planning</u>	<u>Hourly Rates</u>
Project Surveyor	\$ 157.00	Senior Environmental Planner	\$ 150.00
Survey Supervisor	\$ 178.00	Environmental Planner II	\$ 131.00
Two-Man Survey Party	\$ 240.00	Environmental Planner I	\$ 120.00
Three-Man Survey Party	\$ 360.00		
Two-Man GPS Crew	\$ 336.00		

Computer Technician / Trainer \$ 168.00

Expert Witness / Arbitration Services are available at a negotiated rate

All expenses for transportation will be charged at cost plus service charges at the rate of 10%.

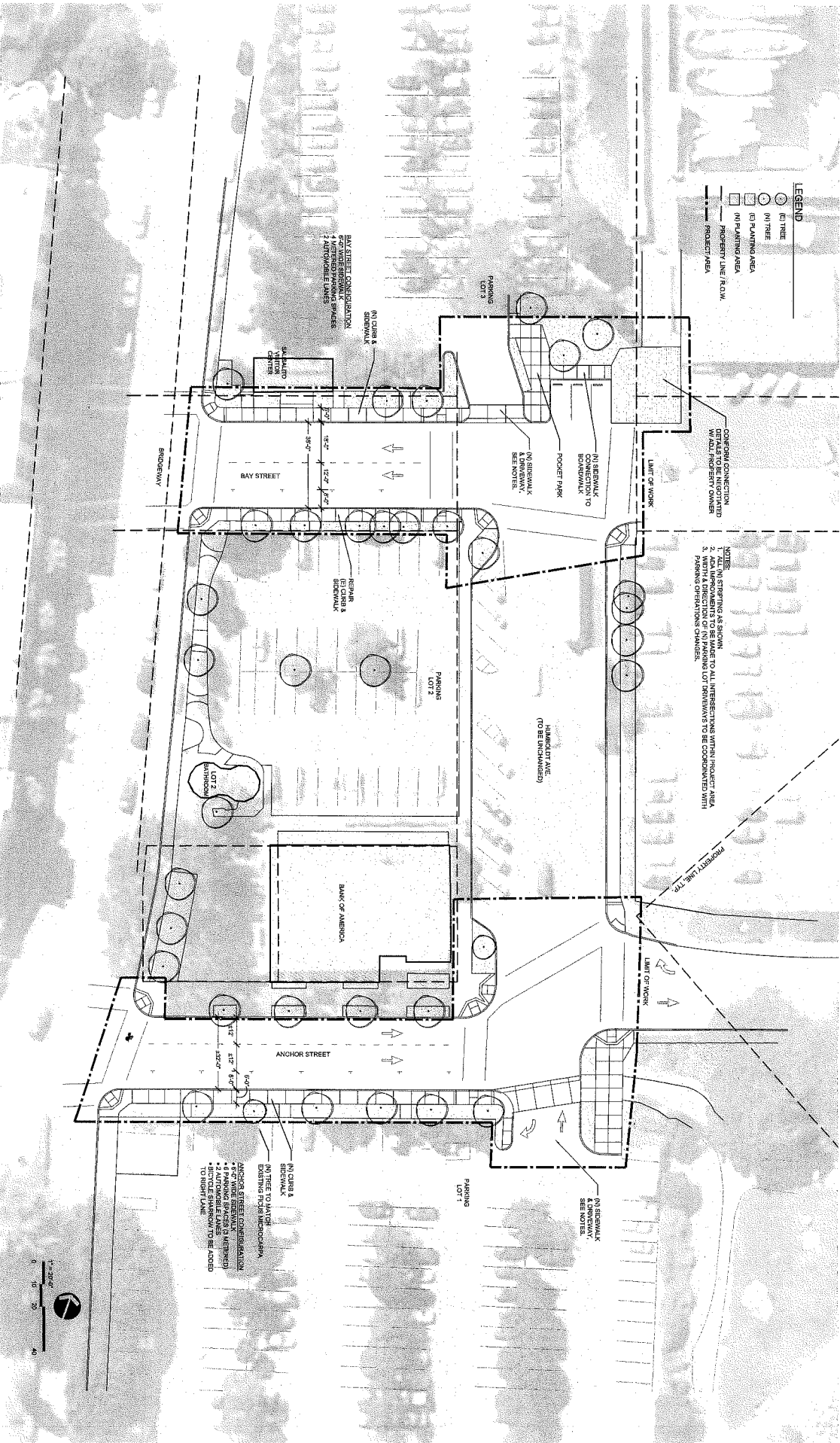
Filing fees, checking fees, prints, and other *outside costs* (such as agency submittal/permit fees etc.) will be charged at cost, plus service charges at the rate of 10%.

Billing will be monthly. Invoices are due and payable upon presentation. Interest at the rate of 1.5% per month commencing thirty (30) days after invoice date will be charged on delinquent accounts.

CSW/Stuber-Stroeh Engineering Group, Inc. reserves the right to suspend work on any project when invoices have not been paid within thirty (30) days after having been rendered.

Client Initials	Consultant Initials
-----------------	---------------------

6B
17



6B
18