



# STAFF REPORT

CITY COUNCIL OF THE CITY OF SAUSALITO

## AGENDA TITLE:

Review and Approval of Alten Change Order #8 for Sausalito Public Safety Facilities Project

## RECOMMENDED MOTION:

Adopt a Resolution of the City Council of the City of Sausalito Approving and Authorizing the City Manager to Execute Change Order #8 for Alten Construction Inc. for Sausalito Public Safety Facilities Project New Construction Dated October 9, 2008 and Authorizing the City Manager to Approve Certain Additional Pending Change Orders before January 12, 2010

---

## SUMMARY

In response to requests from the Architect and concurrence from the City, Alten Construction has submitted seven (7) new Change Order Requests (CORs) for a net addition to the construction contract in the amount of \$25,582. Swinerton Management & Consulting (SMC), City Staff and Glass Architects have reviewed these CORs and recommends that the City of Sausalito approve a Change Order to the construction contract with Alten Construction.

Further, Alten has submitted certain additional change order requests that are currently under review by SMC, Glass and City Staff. In order to avoid delays on approval of these pending requests while Council is in recess over the holidays, Staff is requesting that the City Manager be authorized to approve certain additional amounts against the pending orders listed below.

## CHANGE ORDER REQUESTS RECOMMENDED FOR APPROVAL:

**COR 36 – Added Furring at Fire per RFI-113 - \$1,777** – SMC, Glass Architects and staff of the City of Sausalito have reviewed the Change Order Request and confirm that the amount requested is justified.

**COR 44 – Added Steel for Sunshades per RFI 23 - \$4,488** – SMC, Glass Architects and staff of the City of Sausalito have reviewed the Change Order Request and confirm that the amount requested is justified.

**COR 51 – Hot Water Return for Fire Station - \$2,757** – Normal Costs for installing ½” copper piping is approximately \$24/LF. Current cost submitted is approximately \$28-29/ LF. Given that current work is in place, this may have resulted in additional costs. SMC, Glass Architects and

staff of the City of Sausalito have reviewed the Change Order Request and confirm that the amount requested is justified.

**COR 52 – Added Steel Reinforcement in Aluminum Mullions - \$4,071 – SMC, Glass Architects and staff of the City of Sausalito have reviewed the Change Order Request and confirm that the amount requested is justified.**

**COR 55 – Added Reglet per RFI 201 - \$3,698 – SMC, Glass Architects and staff of the City of Sausalito have reviewed the Change Order Request and confirm that the amount requested is justified.**

**COR 56 – Re-Route Make Up Air Duct - \$2,440 – SMC, Glass Architects and staff of the City of Sausalito have reviewed the Change Order Request and confirm that the amount requested is justified.**

**COR 58 – Added Duplex outlets for Lockers - \$6,351 – SMC, Glass Architects and staff of the City of Sausalito have reviewed the Change Order Request and confirm that the amount requested is justified.**

**PENDING CHANGE ORDER REQUESTS, REQUESTED AMOUNTS AND RECOMMENDED AUTHORIZATIONS:**

**COR 37 – Added C-Channel Bracing for Large Roof Penetrations - \$20,740 requested, \$10,000 recommended as a contingency**

**COR 38 – Added Shotcrete per changes in Wall Geometry - \$2,701 requested, \$2,701 recommended as a contingency**

**COR 39 – Added Xypex® for Shotcrete overbreak - \$13,082 requested, \$13,082 recommended as a contingency – Xypex® was requested as a waterproofing concrete additive. A discrepancy between documents supporting the COR exists and is expected to be resolved shortly.**

**COR 46 – Added Storm Drain - \$24,681 requested, \$24,681 recommended as a contingency – This work was included as Alternate 1 in the bid documents. The work in some form will have to be completed to allow for discharge of stormwater from the Fire Station roof and driveway areas on the south side of the new building. The exact details of are yet to be established but Alten and its site civil subcontractor Peak Engineering have performed “potholing” and other services and have acquired materials to allow for construction once the design details have been finalized.**

**COR 47 – Thermoplastic Paint for Striping - \$1,664 requested, \$1,664 recommended as a contingency**

**COR 48 – Deep Trenching Across Caledonia - \$28,888 requested, \$18,000 recommended as a contingency** – the multiple depths and complexities of the underground utilities encountered when crossing Caledonia to connect the power and other cables from the transformer and standby generator at the Fire Station to the new Police Station would have required hand-digging whether foreseen or not. Certainly the information available in the design documents was insufficient to allow the bidders to accurately determine the scope and magnitude of deep, shored, hand-excavation trenching necessary to route the required electrical conduits between the two buildings. While the basis for the amount requested is critically evaluated, it is imperative that a reasonable level of compensation be afforded to allow the affected subcontractors to continue to complete their work.

**COR 57 – Added Lighting and Irrigation - \$4,501 requested, \$4,501 recommended as a contingency** Council directed that provisions for future lighting, irrigation and drainage be made in the plaza area in front of the new Police Station. While the details of the COR are evaluated, Staff recommends that the amount requested be authorized in order that approved costs can be paid in a timely manner before the next Council meeting.

**COR 59 – Furnishing and Installation of Dedicated Equipment -- \$146,322 requested, \$146,322 recommended as a contingency** Certain dedicated equipment is required and has been specified for permanent installation into both the Police and Fire Stations before the buildings can be commissioned into their respective services. Examples include the appliances and the ventilation hood in the kitchen, specialized laundry equipment, for personnel protective equipment, fire hose drying equipment, mounts for audio visual equipment, *etc.* A detailed list is labeled APR-11 attached. Owing to Alten Construction and its subcontractor's activity onsite, Staff, SMC and Glass Architects agreed that pricing for furnishing and installation of the necessary equipment from Alten, as long as the pricing complied with the City's procurement Ordinance, was a reasonable means of providing best value in acquisition of the necessary equipment and services. Alten has provided the attached COR-59 and Staff and consultants are reviewing it. In order to avoid delays in approval, Staff recommends that the City Manager be given authority to approve the Pending Change Order during the holiday recess.

## **ISSUES**

No issues have been identified with the contemplated actions.

## **FISCAL IMPACT**

Approval of Alten's Change Order No. 8 will result in a deduction of \$25,582 from the hard cost construction contingency encumbrance of the General Obligation Bond Funds for this Project. Taking the proposed change orders into account, the amount of funds remaining in the Hard Cost Contingency is \$354,846. The total cost of Change Orders, including the present Change

Order, total \$607,492 which represents a 6.6% change from the original estimate, within the 10% contingency allocated to the Project from the beginning.

Were the City Manager to approve all of the amounts recommended as a contingency for pending CORs as described above, the total would be \$220,951. Subtracting this additional total from the hard cost contingency described above would leave \$133,895. The total cost including the Change Orders listed above and the pending CORs would total \$828,443 or 9.0%.

### STAFF RECOMMENDATIONS

Staff, Swinerton Management & Consulting and Glass Architects recommend that the City Council Approve and Authorize the City Manager to execute Change Order No. 8 to the Contract with Alten Construction Inc. for Construction of the Public Safety Facilities Project in the amount of \$25,582 and to authorize the City Manager to approve amounts up to and including the contingencies recommended above between now and the next Council meeting.


### ATTACHMENTS

1. Resolution No. \_\_\_ of the City Council of the City of Sausalito Approving and Authorizing the City Manager to Execute Change Order No. 8 to the Contract with Alten Construction Inc. for Construction of the Sausalito Public Safety Facilities Project New Construction Dated October 9, 2008 and Authorizing the City Manager to Approve Certain Additional Pending Change Orders before January 12, 2010.
2. APR-11 and COR-59

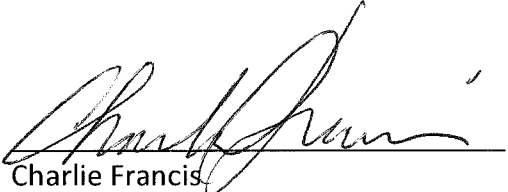
PREPARED BY:

  
Loren Umbertis  
Swinerton Management & Consulting

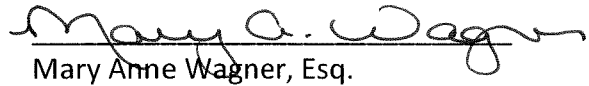
REVIEWED BY:

  
Jonathon Goldman  
Director of Public Works

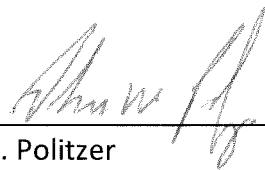
REVIEWED BY:

  
Charlie Francis  
Administrative Services Director/Treasurer

REVIEWED BY:

  
Mary Anne Wagner, Esq.  
City Attorney

SUBMITTED BY:



---

Adam W. Politzer  
City Manager



**RESOLUTION No. \_\_\_\_\_**

**A RESOLUTION OF THE CITY COUNCIL OF THE CITY OF SAUSALITO  
APPROVING AND AUTHORIZING THE CITY MANAGER TO EXECUTE  
CHANGE ORDER NO. 8 TO THE CONTRACT WITH ALTEN CONSTRUCTION  
INC. FOR CONSTRUCTION OF THE SAUSALITO PUBLIC SAFETY FACILITIES  
PROJECT NEW CONSTRUCTION DATED OCTOBER 9, 2008 AND  
AUTHORIZING THE CITY MANAGER TO APPROVE CERTAIN ADDITIONAL  
PENDING CHANGE ORDERS BEFORE JANUARY 12, 2010**

---

**WHEREAS**, by Minute Order adopted on the 23<sup>rd</sup> day of September, 2008 the City Council of the City of Sausalito awarded Alten Construction, Inc. of Richmond, California ("Alten") a contract for BID NUMBER F-141, THE SAUSALITO PUBLIC SAFETY FACILITIES PROJECT NEW CONSTRUCTION (the "Project"); and

**WHEREAS**, the Contract with Alten for the Project was fully executed the 9<sup>th</sup> day of October, 2008 and Notice to Proceed was issued; and

**WHEREAS**, during the course of recent phases of construction of the Project, situations have been encountered that were either not clearly outlined, or were entirely unforeseen, and Alten has diligently performed additional work as authorized by the City under the terms of its Contract and the City Council of the City of Sausalito has approved requisite change orders for said work with Resolution 5001 of February 10, 2009, Resolution 5035 of June 9, 2009, Resolution 5053 of July 21, 2009, Resolution 5062 of September 1, 2009, Resolution 5071 of October 6, 2009, and Resolution 5082 of November 10, 2009; and

**WHEREAS**, during the course of recent phases of construction of the Project, situations have been encountered that were either not clearly outlined, or were entirely unforeseen, and Alten has requested additional compensation to complete its work under the terms of its Contract; and

**WHEREAS**, Alten, in conformance with the Contract, has issued Change Order Requests numbered COR-36, 44, 51, 52, 55, 56, 58 and 59 to the City of Sausalito for review and consideration; and

**WHEREAS**, the City's Architect for the Project, Glass Architects, its Construction Manager, Swinerton Management & Consulting, and the City's Director of Public Works, have reviewed and considered said Change Order Requests and confirmed that they are justified, equitable, and otherwise in order, and recommend that the City Council approve said requests as CHANGE ORDER No. 8 to said Contract with Alten in the amount of \$25,582 (TWENTY-FIVE THOUSAND FIVE-HUNDRED EIGHTY-TWO AND 00/100 DOLLARS); and

**WHEREAS**, Alten, in conformance with the Contract, has issued Pending Change Order Requests numbered COR-37, 38, 39, 46, 47, 48, and 57 to the City of Sausalito for review and consideration; and

**WHEREAS**, the City's Architect for the Project, Glass Architects, its Construction Manager, Swinerton Management & Consulting, and the City's Director of Public Works, are engaged in the review and consideration of said Pending Change Order Requests and recommend that the City Council authorize the City Manager to approve said pending requests in an amount not to exceed \$74,629 (SEVENTY-FOUR THOUSAND SIX-HUNDRED TWENTY-NINE AND 00/100 DOLLARS) during the period the City Council of the City of Sausalito will be in recess between the date of this Resolution and its next regular meeting tentatively scheduled for January 12, 2009.

**NOW, THEREFORE**, the City Council of the City of Sausalito does hereby resolve as follows:

1. CHANGE ORDER No. 8 (which incorporates Alten Change Order Requests numbered COR-36, 44, 51, 52, 55, 56, and 58 by reference hereunder) to the Contract dated the 9<sup>th</sup> day of October, 2008 between Alten Construction Inc. and the City of Sausalito is hereby approved in the amount of \$25,582 (TWENTY-FIVE THOUSAND FIVE-HUNDRED EIGHTY-TWO AND 00/100 DOLLARS).
2. The City Manager is authorized to execute said CHANGE ORDER No. 7 to the Contract with Alten on behalf of the City.
3. The City Manager is further authorized to approve Pending CORs-37, 38, 39, 46, 47, 48, 57 and 59 in an amount not to exceed \$220,951 (TWO-HUNDRED TWENTY THOUSAND NINE-HUNDRED FIFTY-ONE AND 00/100 DOLLARS) during the period between the date of this Resolution and its next regular meeting tentatively scheduled for January 12, 2009.
4. Should a credit be due on any of the subject CORs, the City Manager is authorized to accept such credit(s) without further approval from Council.



**PASSED AND ADOPTED** at a regular meeting of the City Council of the City of Sausalito on the 8th day of December, 2009, by the following vote:

AYES: Councilmembers:  
NOES: Councilmembers:  
ABSTAIN: Councilmembers:  
ABSENT: Councilmembers:

---

MAYOR OF THE CITY OF SAUSALITO

ATTEST:

---

CITY CLERK



**ARCHITECT'S  
PROPOSAL  
REQUEST**

- OWNER
- CONTRACTOR
- FIELD ( )
- CONSTRUCTION MANAGER ( )
- CONSULTANT ( )

PROJECT: SAUSALITO PUBLIC SAFETY BUILDINGS

PROPOSAL REQUEST No: 11  
ARCHITECT'S PROJECT No: G0616  
DATE: 11/4/09

Owner: City of Sausalito

Contractor: Alten Construction

Please submit an itemized quotation for proposed changes in the Contract Sum and/or Time to complete the proposed modifications to the Contract Documents described herein. (Refer to Specifications Section 01035, paragraph 1.03)

**THIS IS NEITHER A CHANGE ORDER NOR A DIRECTION TO PROCEED WITH THE WORK DESCRIBED HEREIN.**

**Reference: Add Equipment into the Construction Contract  
Description:**

Add the following (provide and install) into the Construction Contract:

1. Add (3) Visual Display Surfaces per attached Spec Section 101100.
2. Add (2) Display Cases per attached Spec Section 101200.
3. Add Metal Storage Specialties per attached Spec Section 105000.
4. Add Commercial Equipment per attached Spec Section 112000.
5. Add Residential Appliances per attached Spec Section 113000.
6. Add Audio / Visual Equipment and Laboratory Fume Hood per attached Spec Section 115000.
7. Add Broom Rack, Fire Laundry 119. Rack to be Bobrick B-223-36 Mop and Broom Holder (or approved equal), stainless steel with satin finish, holds 4 mops.
8. Add Safe, Police Evidence 119. Safe to be American Security Products Co. BSW Series – The SafeWizard Depository, Model BSW4025 or approved equal. Safe to be 42" high x 25' wide x 25" deep with 3 shelves, microprocessor controls. Weight: 390 lbs. Permanent installation per manufacturer's recommendations.
9. Add Firearm Discharge Unit, Police Armory 114. Discharge Unit to be Savage Range Systems 'Freestanding Check-it' or approved equal. Discharge unit to handle handguns, shotguns and rifles up to 3000FPE. Unit dimensions 19" x 10" x 27" high, 3" diameter trap opening. Weight: 95 lbs.
10. Provide blocking for equipment anchorage in wall framing for the above-mentioned items 1 thru 8.

**Attachments:**

Spec Section 101100.  
Spec Section 101200.  
Spec Section 105000.  
Interior Elevation Sketch, Police Sallyport 107

**GLASS Architects**

200 E Street, Suite 100 Santa Rosa, CA 95404 TEL (707) 544-3920 · FAX (707) 544-2514  
Page 1 of 2

6i  
11

Spec Section 112000.  
Spec Section 113000.  
Spec Section 115000.

## 101100 - VISUAL DISPLAY SURFACES

### PART 1 - GENERAL

#### 1.1 SUMMARY

- A. Section Includes:
  - 1. Markerboards.
  - 2. Tackboards.

#### 1.2 SUBMITTALS

- A. Product Data: For each type of product indicated.
- B. LEED Submittal:
  - 1. Product Data for Credit EQ 4.4: For composite wood products, documentation indicating that the product contains no urea formaldehyde.
- C. Shop Drawings: For visual display surfaces. Include plans, elevations, sections, details, and attachments to other work.
  - 1. Show locations of panel joints.
  - 2. Include sections of typical trim members.
- D. Samples: For each exposed product and for each color and texture specified.
- E. Product Test Reports: Based on evaluation of comprehensive tests performed by a qualified testing agency, for surface-burning characteristics of fabrics.
- F. Maintenance Data: For visual display surfaces to include in maintenance manuals.
- G. Warranties: Sample of special warranties.

#### 1.3 QUALITY ASSURANCE

- A. Surface-Burning Characteristics: As determined by testing identical products according to ASTM E 84 by a qualified testing agency. Identify products with appropriate markings of applicable testing agency.
  - 1. Flame-Spread Index: 25 or less.
  - 2. Smoke-Developed Index: 50 or less.

#### 1.4 WARRANTY

- A. Special Warranty for Porcelain-Enamel Face Sheets: Manufacturer's standard form in which manufacturer agrees to repair or replace porcelain-enamel face sheets that fail in materials or workmanship within specified warranty period.
  - 1. Failures include, but are not limited to, the following:
    - a. Surfaces lose original writing and erasing qualities.
    - b. Surfaces exhibit crazing, cracking, or flaking.
  - 2. Warranty Period: Life of the building.

## PART 2 - PRODUCTS

### 2.1 MATERIALS, GENERAL

- A. Porcelain-Enamel Face Sheet: Porcelain-enamel-clad, ASTM A 463/A 463M, Type 1, stretcher-leveled aluminized steel, with 0.024-inch uncoated thickness; with porcelain-enamel coating fused to steel at approximately 1000 deg F.
  - 1. Products: Subject to compliance with requirements, available products that may be incorporated into the Work include, but are not limited to, the following:
    - a. Claridge Products and Equipment, Inc; LCS Markerboard.
- B. Melamine: Thermally fused, melamine-impregnated decorative paper complying with LMA SAT-1.
- C. Natural Cork Sheet: Seamless, single-layer, compressed fine-grain cork sheet; bulletin board quality; face sanded for natural finish.
- D. Plastic-Impregnated Cork Sheet: Seamless, homogeneous, self-sealing sheet consisting of granulated cork, linseed oil, resin binders, and dry pigments that are mixed and calendared onto fabric backing; with washable vinyl finish and integral color throughout.
- E. Polyester Fabric: Nondirectional weave, 100 percent polyester; weighing not less than 15 oz./sq. yd.; with surface-burning characteristics indicated.
- F. Hardboard: ANSI A135.4, tempered.
- G. Particleboard: ANSI A208.1, Grade M-1, made with binder containing no urea formaldehyde.
- H. Fiberboard: ASTM C 208.
- I. Extruded Aluminum: ASTM B 221, Alloy 6063.

### 2.2 MARKERBOARD ASSEMBLIES

- A. Porcelain-Enamel Markerboards: Balanced, high-pressure, factory-laminated markerboard assembly of three-ply construction consisting of backing sheet, core material, and 24 gauge, LCS porcelain-enamel face sheet with low-gloss finish.
  - 1. Basis-of-Design Product: Claridge Markerboards to match existing units, or a comparable product by one of the following:
    - a. ADP Lemco, Inc.
    - b. Egan Visual Inc.
    - c. PolyVision Corporation; a Steelcase company.
  - 2. Manufacturer's Standard Core: 7/16" Formaldehyde Free particle board core, with manufacturer's standard moisture-barrier backing.
  - 3. Laminating Adhesive: Manufacturer's standard, moisture-resistant thermoplastic type.

### 2.3 TACKBOARD ASSEMBLIES

- A. Fabric-covered Tackboards: Polyester-Fabric-Faced Tackboard: 1/4-inch- thick, polyester-fabric-faced cork sheet factory laminated to manufacturer's standard backing.
  - 1. Basis-of-Design Product: Claridge Tackboards to match existing units, or a comparable product by one of the following:
    - a. ADP Lemco, Inc.
    - b. Egan Visual Inc.
    - c. PolyVision Corporation; a Steelcase company.

- B.
  1. ADP Lemco, Inc.
  2. Claridge Products and Equipment, Inc.
  3. Egan Visual Inc.
  4. PolyVision Corporation; a Steelcase company.

2.4 FABRICATION

- A. Porcelain-Enamel Visual Display Assemblies: Laminate porcelain-enamel face sheet and backing sheet to core material under heat and pressure with manufacturer's standard flexible, waterproof adhesive.
- B. Visual Display Boards: Factory assemble visual display boards unless otherwise indicated.
  1. Where factory-applied trim is indicated, trim shall be assembled and attached to visual display boards at manufacturer's factory before shipment.
- C. Factory-Assembled Visual Display Units: Coordinate factory-assembled units with trim and accessories indicated. Join parts with a neat, precision fit.
  1. Make joints only where total length exceeds maximum manufactured length. Fabricate with minimum number of joints, balanced around center of board, as acceptable to Architect.
- D. Aluminum Frames: Fabricate units straight and of single lengths, keeping joints to a minimum. Miter corners to a neat, hairline closure.
  1. Where factory-applied trim is indicated, trim shall be assembled and attached to visual display units at manufacturer's factory before shipment.

2.5 ALUMINUM FINISHES

- A. Clear Anodic Finish: AAMA 611, AA-M12C22A31, Class II, 0.010 mm or thicker.

2.6 VISUAL DISPLAY SURFACE SCHEDULE

- A. Police Station - Briefing 123 - Visual Display Boards:
  1. Tack Surface: Polyester-fabric-faced tackboard assembly.
    - a. Color: 1691 Quartz to match existing conditions.
  2. Corners: Square.
  3. Width at Police Station: Two units, one 7'-0" wide and one 4'-0" wide.
  4. Height: 48 inches.
  5. Mounting: Wall.
  6. Mounting Height: As indicated on Drawings.
  7. Factory-Applied Aluminum Trim: with clear anodic finish.
  8. Accessories:
    - a. Chalktray: Solid type.
- B. Fire Station - Kitchen / Dayroom 212 - Visual Display Board:
  1. Markerboard: Porcelain-enamel markerboard assembly.
    - a. Color: 92 White to match existing conditions.
  2. Corners: Square.
  3. Width at Fire Station: 48" wide.
  4. Height: 48 inches.
  5. Mounting: Wall.
  6. Mounting Height: As indicated on Drawings.
  7. Factory-Applied Aluminum Trim: with clear anodic finish.
  8. Accessories:

- a. Chalktray: Solid type.

## PART 3 - EXECUTION

### 3.1 INSTALLATION

- A. Prepare surfaces to achieve a smooth, dry, clean surface free of flaking, unsound coatings, cracks, defects, projections, depressions, and substances that will impair bond between visual display surfaces and wall surfaces.
- B. General: Install visual display surfaces in locations and at mounting heights indicated on Drawings. Keep perimeter lines straight, level, and plumb. Provide grounds, clips, backing materials, adhesives, brackets, anchors, trim, and accessories necessary for complete installation.
- C. Visual Display Boards: Attach concealed clips, hangers, and grounds to wall surfaces and to visual display boards with fasteners at not more than 16 inches o.c. Secure both top and bottom of boards to walls.
- D. Clean visual display surfaces according to manufacturer's written instructions. Attach one cleaning label to visual display surface in each room. Cover and protect visual display surfaces.

**END OF SECTION**



## 101200 - DISPLAY CASES

### PART 1 - GENERAL

#### 1.1 SUMMARY

- A. Section Includes:
  - 1. Nonilluminated bulletin cases.

#### 1.2 DEFINITIONS

- A. Bulletin Case: Tackable visual display surface or tackboard enclosed in a display case.

#### 1.3 PERFORMANCE REQUIREMENTS

- A. Seismic Performance: Display cases shall withstand the effects of earthquake motions according to ASCE/SEI 7.
  - 1. Component Importance Factor is 1.5.

#### 1.4 SUBMITTALS

- A. Product Data: For each type of product indicated.
- B. LEED Submittal:
  - 1. Product Data for Credit EQ 4.4: For composite wood products used in display cases, documentation indicating that product contains no urea formaldehyde.
- C. Shop Drawings: For display cases. Include plans, elevations, sections, details, and attachments to other work.
  - 1. Include sections of typical trim members.
- D. Samples: For each exposed product and for each color and texture specified.

### PART 2 - PRODUCTS

#### 2.1 MATERIALS

- A. Hardboard: ANSI A135.4, tempered.
- B. Particleboard: ANSI A208.1, Grade M-1, made with binder containing no urea formaldehyde.
- C. Fiberboard: ASTM C 208.
- D. Hardwood Plywood: HPVA HP-1, made with adhesive containing no urea formaldehyde.
- E. Natural Cork Sheet: Seamless, single-layer, compressed fine-grain cork sheet; bulletin board quality; face sanded for natural finish.
- F. Plastic-Impregnated Cork Sheet: Seamless, homogeneous, self-sealing sheet consisting of granulated cork, linseed oil, resin binders, and dry pigments that are mixed and calendared onto burlap backing; with washable vinyl finish and integral color throughout.
- G. Polyester Fabric: Nondirectional weave, 100 percent polyester; weighing not less than 15 oz./sq. yd.; with flame-spread index of 25 or less when tested according to ASTM E 84.

- H. Extruded-Aluminum Bars and Shapes: ASTM B 221, Alloy 6063.
- I. Aluminum Tubing: ASTM B 429, Alloy 6063.
- J. Clear Tempered Glass: ASTM C 1048, Kind FT, Condition A, Type I, Class 1, Quality Q3, with exposed edges seamed before tempering, and 6 mm thick unless otherwise indicated.
- K. Fasteners: Provide screws, bolts, and other fastening devices made from same material as items being fastened. Provide types, sizes, and lengths to suit installation conditions. Use security fasteners where exposed to view.

## 2.2 BULLETIN CASES

- A. In other Part 2 articles where titles below introduce lists, the following requirements apply to product selection:
  - 1. Basis-of-Design Product: The design for each display case is based on the product named. Subject to compliance with requirements, provide either the named product or a comparable product by one of the other manufacturers specified.
  - 2. Basis-of-Design Product: Claridge Products and Equipment, Inc. 'Contemporary Bulletin Board Cabinet' or a comparable product by one of the following:
  - 3. Platinum Visual Systems; a division of ABC School Equipment, Inc.
  - 4. PolyVision Corporation; a Steelcase company.
  - 5. Equal approved by the Architect.
- B. Surface-Mounted Cabinet: Factory-fabricated cabinet; with tack assembly on back inside surface, and glazed doors at front.
  - 1. Cabinet Box: Extruded aluminum top, bottom, and side panels.
  - 2. Cabinet Frame: Aluminum.
  - 3. Aluminum Finish: Clear anodic.
- C. Glazed Hinged Doors: Tempered glass; set in frame matching cabinet material and finish. Equip each door with full-height continuous hinge and cylinder lock with two keys.
  - 1. Thickness: Not less than 3/16 inch thick.
  - 2. Number of Doors: Two per case.
- D. Tack Surface: Polyester-fabric-faced tackboard assembly.
  - 1. Color: As selected by Architect from manufacturer's full range.
- E. Unit sizes:
  - 1. Police, Lobby 101: One unit, approximately 4'-9" wide x 3'-3" high; field measure for custom size.
  - 2. Fire, Lobby 101: One unit, approximately 6'-0" wide x 4'-0" high; field measure for custom size.

## 2.3 FABRICATION

- A. Fabricate bulletin cases to requirements indicated for dimensions, design, and thickness and finish of materials.
- B. Use metals and shapes of thickness and reinforcing to produce flat surfaces, free of oil-canning, and to impart strength for size, design, and application indicated.
- C. Fabricate cases and door frames with reinforced corners, mitered to a hairline fit, with no exposed fasteners.

2.4 ALUMINUM FINISHES

- A. Clear Anodic Finish: AAMA 611, AA-M12C22A31, Class II, 0.010 mm or thicker.

PART 3 - EXECUTION

3.1 INSTALLATION

- A. General: Install units in locations and at mounting heights indicated on Drawings. Keep perimeter lines straight, level, and plumb. Provide grounds, clips, backing materials, adhesives, brackets, anchors, trim, and accessories necessary for complete installation.
- B. Surface-Mounted Display Cases: Attach units to wall surfaces with concealed clips, hangers, or grounds fastened at not more than 16 inches o.c. Secure both top and bottom of display cases to walls.
- C. Adjust doors to operate smoothly without warp or bind and so contact points meet accurately. Lubricate operating hardware as recommended by manufacturer.

**END OF SECTION**

## SECTION 105000 - METAL STORAGE SPECIALTIES

### PART 1 - GENERAL

#### 1.1 SUMMARY

- A. Section Includes:
1. Metal Storage Cabinets
  2. Metal Weapons Lockers
  3. Metal Shelving
  4. Wall-mounted Bicycle Rack
  5. Hose Rack

#### 1.2 SUBMITTALS

- A. Product Data: For each type of product indicated. Include manufacturer's standard anchorage details for concrete floor slabs and metal stud walls.

#### 1.3 WARRANTY

- A. Special Warranty: Manufacturer's standard form in which manufacturer agrees to repair or replace components of metal cabinets and lockers that fail in materials or workmanship, excluding finish, within specified warranty period.
1. Warranty Period for Knocked-Down Metal Storage Specialties: Two years from date of Substantial Completion.
  2. Warranty Period for All-Welded Metal Storage Specialties: 10 years from date of Substantial Completion.

### PART 2 - PRODUCTS

#### 2.1 MANUFACTURERS

- A. Basis-of-Design Product: Subject to compliance with requirements, provide product indicated or comparable product by one of the following:
1. Penco Products [www.pencoproducts.com](http://www.pencoproducts.com)
  2. Rousseau Metals Inc [www.rousseau-metal.com](http://www.rousseau-metal.com)
  3. Lyon Workspace products [www.lyonworkspace.com](http://www.lyonworkspace.com)
  4. Equal approved by the Architect.

#### 2.2 MANUFACTURED UNITS

- A. Police – Metal Cabinet, Meter Shop 113
1. Basis-of-Design product is Penco 'Metal Storage Cabinet'.
  2. Description: Metal Cabinet to be 48" wide x 24" deep x 78" high, two doors and four adjustable reinforced shelves (400 lb. capacity). Finish: Manufacturer's standard powder coat finish; color to be selected by Architect from manufacturer's full range of available colors.
- B. Police – Metal Weapon Lockers, Armory 114
1. Basis-of-Design product is TSI Technical Solutions Inc 'Universal Weapons Cabinet'.
  2. Description: (2) units, 44" wide x 72" high x 15" deep, provide storage for 15 handguns, 6 long guns and ammunition; verify specifics with Owner.
- C. Police – Metal Weapons Lockers, Evidence 119
1. Basis-of-Design product is TSI Technical Solutions Inc 'Universal Weapons Cabinet'.

2. Description: (2) units, 44" wide x 72" high x 15" deep, provide storage for 15 handguns, 6 long guns, ammunition; verify specifics with Owner.
- D. Fire – Hazmat Cabinet, Repair Shop 120
1. Basis-of-Design product is Penco 'Metal Storage Cabinet'.
  2. Description: Metal Cabinet to be 36" wide x 24" deep x 78" high, two doors and four adjustable shelves. Finish: Manufacturer's standard powder coat finish; color to be selected by Architect from manufacturer's full range of available colors.
- E. Police – Metal Shelving, Storage 115
1. Basis-of-Design product is Penco 'Clipper Industrial Shelving', Closed Medium Duty Units.
  2. Description: (3) units, 36" wide x 18" deep x 87" high, 7 adjustable shelves, 500 # minimum capacity per shelf, medium duty. Finish: Manufacturer's standard powder coat finish; color to be selected by Architect from manufacturer's full range of available colors.
- F. Police – Metal Shelving, Evidence 119
1. Basis-of-Design product is Penco 'Clipper Industrial Shelving', Open Medium Duty Units and Closed Medium Duty Units.
  2. Description: (24) Open Units and (2) Closed Units, 36" wide x 12" deep x 87" high, 7 adjustable shelves, 500 # minimum capacity per shelf, medium duty. Finish: Manufacturer's standard powder coat finish; color to be selected by Architect from manufacturer's full range of available colors.
- G. Police – Wall-mounted Bicycle Racks, Sallyport 107
1. Basis-of-Design product is Bikeparking.com 'WallHook'.
  2. Description: WallHook is 3" wide x 8" high x 5" deep, fabricated of 3/8" solid steel dowel and 12 gauge sheet steel. Provide two anchors per WallHook into wall blocking. Install per manufacturer's layout recommendations. Finish: Powder coat black. See attached Interior Elevation drawing.
- H. Fire – Hose Rack, Apparatus Bay 114
1. Basis-of-Design product is Circul-Air Corp (Northbrook, Illinois), 'Econo-Rak'.
  2. Description: Hose Rack is 8'-6" long with three adjustable shelves. Anchor to floor and wall per manufacturer's recommendations. Finish: Manufacturer's standard powder coat finish; color to be selected by Architect from manufacturer's full range of available colors.

## 2.3 ACCESSORIES

- A. Anchorage: Provide all accessories for a complete installation including manufacturer's anchor clips, anchors and shims.

## 2.4 FINISHES

- A. Steel and Galvanized-Steel Factory Finish: Immediately after cleaning and pretreating, apply manufacturer's standard powder coat or 2-coat, baked-on finish consisting of prime coat and thermosetting topcoat, with a minimum dry film thickness of 1 mil (0.025 mm) for topcoat.
1. Color and Gloss: As selected by Architect from manufacturer's full range.

## 2.5 FABRICATION

- A. Fabricate metal cabinets and lockers square, rigid, and without warp and with metal faces flat and free of dents or distortion. Make exposed metal edges safe to touch and free of sharp edges and burrs.

1. Form body panels, doors, shelves, and accessories from one-piece steel sheet unless otherwise indicated.
  2. Provide fasteners, filler plates, supports, clips, and closures as required for complete installation.
- B. Fabricate each metal locker with an individual door and frame; individual top, bottom, and back; and common intermediate uprights separating compartments. Factory weld frame members of each metal locker together to form a rigid, one-piece assembly.
- C. Knocked-Down Construction: Fabricate metal lockers using nuts, bolts, screws, or rivets for preassembly at plant prior to shipping.
- D. All-Welded Construction: Factory preassemble metal lockers by welding all joints, seams, and connections; with no bolts, nuts, screws, or rivets used in assembly of main locker groups. Factory weld main locker groups into one-piece structures. Grind exposed welds flush.
- E. Continuous Base: Formed into channel or zee profile for stiffness, and fabricated in lengths as long as practical to enclose base and base ends of metal lockers; finished to match lockers.

### PART 3 - EXECUTION

#### 3.1 INSTALLATION

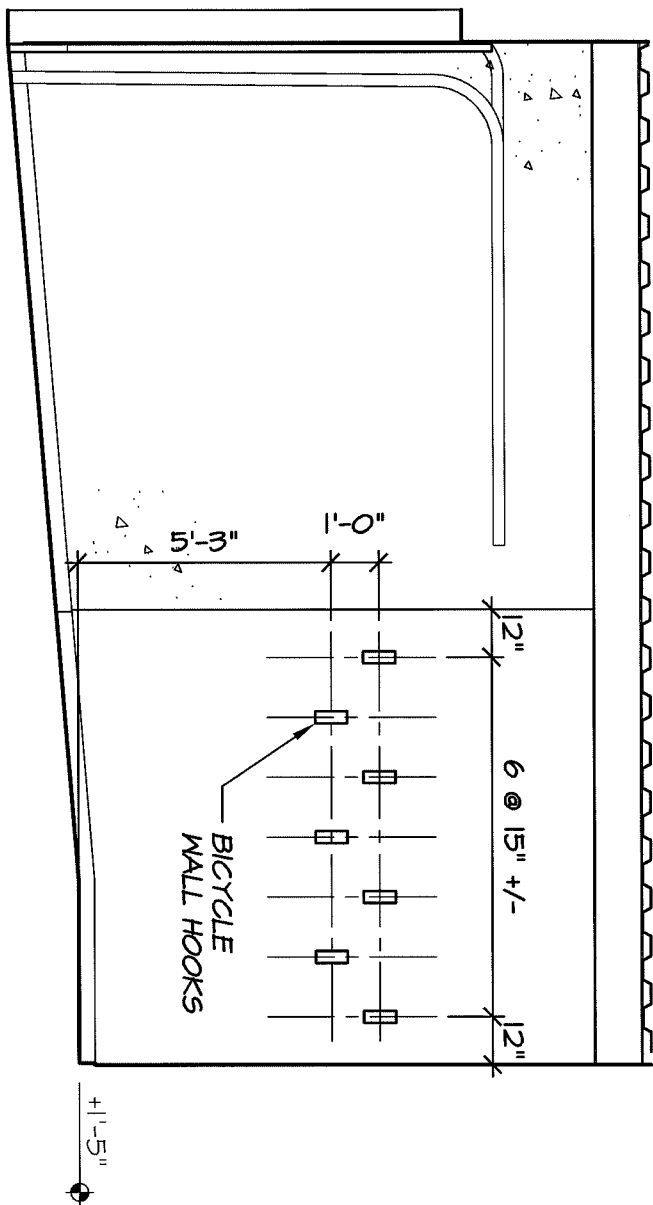
- A. Install metal storage systems in strict accordance with the manufacturers printed instructions.
1. Set in place as indicated on the drawings and anchor securely.

#### 3.2 INSTALLATION

- A. General: Install level, plumb, and true; shim as required, using concealed shims.
1. Anchor cabinet and locker runs at ends and at intervals recommended by manufacturer, but not more than 36 inches o.c. Using concealed fasteners, install anchors through backup reinforcing plates, channels, or blocking as required to prevent metal distortion.
  2. Anchor single rows of metal cabinets and lockers to walls near top and bottom of lockers.
- B. Knocked-Down Metal Cabinets and Lockers: Assemble with standard fasteners, with no exposed fasteners on door faces or face frames.
- C. All-Welded Metal Cabinets and Lockers: Connect groups together with standard fasteners, with no exposed fasteners on face frames.

**END OF SECTION**

ND SECTIONAL DOOR  
EAST 107



## SECTION 112000 - COMMERCIAL EQUIPMENT

### PART 1 - GENERAL

#### 1.1 SUMMARY

- A. This Section includes the following:
  1. Evidence Refrigerators and Freezers.
  2. Evidence Drying Cabinet
  3. Hose Dryer
  4. Washer / Extractor

#### 1.2 SUBMITTALS

- A. Product Data: For each type of product indicated.
- B. Samples: For each exposed finish.
- C. Maintenance data.

#### 1.3 QUALITY ASSURANCE

- A. Installer Qualifications: An employer of workers trained and approved by manufacturer for installation and maintenance of units required for this Project.
- B. Electrical Components, Devices, and Accessories: Listed and labeled as defined in NFPA 70, Article 100, by a testing agency acceptable to authorities having jurisdiction, and marked for intended use.

#### 1.4 WARRANTY

- A. Special Warranty: Manufacturer's standard form in which manufacturer of each appliance specified agrees to repair or replace residential appliances or components that fail in materials or workmanship within specified warranty period.
  1. Evidence Refrigerators / Freezers: One year parts and labor, four extended on compressors.
  2. Evidence Drying Cabinet:
  3. Hose Drying Cabinet:
  4. Washer / Extractor: Two-year limited warranty on non-wearable parts.

### PART 2 - PRODUCTS

#### 2.1 MANUFACTURERS

- A. In other Part 2 articles where titles below introduce lists, the following requirements apply to product selection:
  1. Basis-of-Design Product: The design for each residential appliance is based on the product named. Subject to compliance with requirements, provide either the named product or a comparable product by one of the other manufacturers specified.

#### 2.2 POLICE STATION EQUIPMENT

- A. Evidence Refrigerator, Police Evidence 119:



1. Basis-of-Design Product: True Food Service Equipment, Inc., [www.truemfg.com](http://www.truemfg.com), Model TS-35 Reach-In Solid Swing Door 300 Series Stainless Steel Refrigerator, or a comparable product by one of the following:
  - a. DSM Refrigerated Evidence Storage Lockers
  - b. Sentinel Refrigerated Locker
  - c. Equal approved by the Architect.
2. Type: Freestanding, two-door refrigerator.
3. Storage Capacity: 35 cu. ft., 6 heavy-duty PVC-coated shelves.
4. Construction: Stainless steel interior and exterior front, sides and doors.
5. Dimensions: 39 1/2" wide x 29 1/2" deep x 78 3/8" high.
6. Weight: 385 lbs.
7. Electrical requirements: 115/60/1 volts, 7.3 amps.
8. Provide both the standard locking wheel support and the optional 6" seismic/flanged legs for optional permanent installation.

B. Evidence Freezer, Police Evidence 119:

1. Basis-of-Design Product: True Food Service Equipment, Inc., [www.truemfg.com](http://www.truemfg.com), Model TS-35F Reach-In Solid Swing Door 300 Series Stainless Steel Freezer, or a comparable product by one of the following:
  - a. DSM Evidence Storage Freezer
  - b. Sentinel Evidence Storage Freezer
  - c. Equal approved by the Architect.
2. Type: Freestanding, two-door freezer.
3. Storage Capacity: 35 cu. ft., 6 heavy-duty PVC-coated shelves.
4. Construction: Stainless steel interior and exterior front, sides and doors.
5. Dimensions: 39 1/2" wide x 29 1/2" deep x 78 3/8" high.
6. Weight: 425 lbs.
7. Electrical requirements: 115/60/1 volts, 12.4 amps.
8. Provide both the standard locking wheel support and the optional 6" seismic/flanged legs for optional permanent installation.

C. Drying Cabinet, Police Evidence 119:

1. Basis-of-Design Product: DSM Law Enforcement Products, [www.dsmlawenforcement.com](http://www.dsmlawenforcement.com), Drying Cabinet, or a comparable product by one of the following:
  - a. Misonix Evidence Drying Cabinet
  - b. AirClean Systems 'DrySafe' Evidence Drying Cabinet
  - c. Equal approved by the Architect.
2. Type: Freestanding, two-door drying cabinet.
3. Construction: Stainless steel interior and exterior.
4. Outside Dimensions: 36" wide x 24" deep x 82" high.
5. Inside Dimensions: 30" wide x 21" deep x 62" high, 3 removable shelves
6. Filtered 8" I.D. top exhaust duct
7. Provide the manufacturer's standard legs / clips for permanent seismic installation.

## 2.3 FIRE STATION EQUIPMENT

A. Hose Dryer, Fire Apparatus Bay 114:

1. Basis-of-Design Product: Circul-Air Corp Dual Purpose Dryer for hose and turnout gear, Series 100, or a comparable product by one of the following:
  - a. Equal approved by the Architect.
2. Variable drying settings with a high-volume, top mounted axial fan.
3. Ducting: 12 5/8 inch exhaust orifice at top center of dryer; air flow of approximately 900 cfm.
4. Dimensions: 48 5/8" wide x 79 3/4" high x 54 1/4" overall depth.
5. Weight:

- B. Washer / Extractor, Fire Apparatus Bay 114:
1. Basis-of-Design Product: Milnor 40 lb. Rigid-Mount Washer-Extractor, Model No. 30015 T5X, or a comparable product by one of the following:
    - a. Equal approved by the Architect.
  2. Maximum Capacity: 40 lbs.
  3. Cylinder dimensions: 30" diameter x 15" depth.
  4. Gross Cylinder Volume: 6.134 cubic feet
  5. Speed: Wash: 38 RPM Extract: 509 RPM.
  6. Extract G Forces: 110.
  7. Valves: 3" drain, 3/4" inlet.
  8. Controls: Microprocessor controls with 30 programmable formulas.
  9. Dimensions: 34.5" wide x 45.75" depth x 53.75" high.
  10. Weight: Approximate weight 740 lbs.

### PART 3 - EXECUTION

#### 3.1 INSTALLATION, GENERAL

- A. Built-in Equipment: Securely anchor units to supporting building structure as recommended by equipment manufacturer. Verify that clearances are adequate for proper functioning.
- B. Freestanding Equipment: Place units in final locations after finishes have been completed in each area. Verify that clearances are adequate to properly operate equipment.

**END OF SECTION**

## SECTION 113000 - RESIDENTIAL APPLIANCES

### PART 1 - GENERAL

#### 1.1 SUMMARY

- A. This Section includes the following:
  - 1. Cooking equipment including ranges and microwave ovens.
  - 2. Refrigerator/freezers.
  - 3. Dishwashers.
  - 4. Clothes washers and dryers.

#### 1.2 SUBMITTALS

- A. Product Data: For each type of product indicated.
- B. LEED Submittal:
  - 1. Product Data for Credit EA 1.4: For appliances, documentation indicating that products are ENERGY STAR rated.
- C. Samples: For each exposed finish.
- D. Maintenance data.

#### 1.3 QUALITY ASSURANCE

- A. Installer Qualifications: An employer of workers trained and approved by manufacturer for installation and maintenance of units required for this Project.
- B. Electrical Components, Devices, and Accessories: Listed and labeled as defined in NFPA 70, Article 100, by a testing agency acceptable to authorities having jurisdiction, and marked for intended use.
- C. Gas-Burning Appliances: Comply with ANSI Z21 Series standards.
- D. Residential Appliances: Comply with NAECA standards.
- E. Energy Ratings: Provide appliances that qualify for the EPA/DOE ENERGY STAR product labeling program.

#### 1.4 WARRANTY

- A. Special Warranty: Manufacturer's standard form in which manufacturer of each appliance specified agrees to repair or replace residential appliances or components that fail in materials or workmanship within specified warranty period.
  - 1. Electric Range: Five-year limited warranty for surface-burner elements.
  - 2. Microwave Oven: Five-year limited warranty for defects in the magnetron tube.
  - 3. Refrigerator/Freezer: Five-year limited warranty for in-home service on the sealed refrigeration system.
  - 4. Dishwasher: 10-year warranty for in-home service against deterioration of tub and door liner.
  - 5. Clothes Washer: 10-year limited warranty for the inner wash basket and outer tub, and five-year limited warranty for the balance suspension system and drive transmission.

## PART 2 - PRODUCTS

### 2.1 MANUFACTURERS

- A. In other Part 2 articles where titles below introduce lists, the following requirements apply to product selection:
1. Basis-of-Design Product: The design for each residential appliance is based on the product named. Subject to compliance with requirements, provide either the named product or a comparable product by one of the other manufacturers specified.

### 2.2 COOKING APPLIANCES

- A. Range @ Fire 212: Freestanding, dual fuel.
1. Basis-of-Design Product: GE Monogram Dual-Fuel Professional Range with 4 Burners and Grill, or a comparable product by one of the following:
    - a. Viking Range Corporation.
    - b. Wolf Range Co., Affiliate of Sub-Zero Freezer Co., Inc.
    - c. Equal approved by the Architect.
  2. Type: Semiprofessional, with electric oven.
  3. Cooktop: Four gas burners and grill.
  4. Oven(s): One, electric.
  5. Finish: Stainless steel.
- B. Microwave Oven @ Police 205:
1. Basis-of-Design Product: GE Profile Countertop Microwave Oven PEB2060SMSS or a comparable product by one of the following:
    - a. Equal approved by the Architect.
  2. Oven Capacity: 2.0 cu. ft.
  3. Cabinet Dimensions: 24" wide x 13 3/4" high x 19 3/8" deep.
  4. Cabinet Finish: Stainless steel.
- C. Microwave Oven @ Fire 212:
1. Basis-of-Design Product: GE Monogram Microwave Oven ZE2160SF or a comparable product by one of the following:
    - a. Equal approved by the Architect.
  2. Oven Capacity: 2.1 cu. ft.
  3. Cabinet Dimensions: 24" wide x 14" high x 19 1/2" deep.
  4. Cabinet Finish: Stainless steel.
- D. Coffee Maker @ Police 205
1. Basis-of-Design Product:
- E. Coffee Maker @ Fire 212
1. Basis-of-Design Product:

### 2.3 REFRIGERATION APPLIANCES

- A. Refrigerator/Freezer @ Police 205:
1. Basis-of-Design Product: GE Profile ENERGY STAR Model PFCS1PJYSS 20.9 Cu. Ft. French Door Refrigerator with External Water Dispenser or a comparable product by one of the following:
    - a. General Electric Company
    - b. Jenn-Air
    - c. KitchenAid

- d. Viking Range Corporation
- e. Equal approved by the Architect.
- 2. Type: Freestanding, side-by-side refrigerator doors, with freezer on bottom.
- 3. Storage Capacity: 20.9 Cu. Ft. (14.63 cf Fresh Food Capacity, 6.26 cf Freezer Capacity).
- 4. Front Panels: Stainless-steel.

B. Refrigerator/Freezer @ Fire 212:

- 1. Basis-of-Design Product: Ascend Refrigeration JHD-40DT 40 cu ft. 4 Solid Ddoor All Stainless Steel ½ Refrigerator / ½ Freezer or a comparable product by one of the following:
  - a. Everest Refrigeration, ESRF-2 Deluxe 46 cu ft. 2 solid Door Dual Temp Commercial Referigerator / Freezer. Width: 49 3/5".
  - b. Equal approved by the Architect.
- 2. Type: Freestanding, side-by-side refrigerator/freezer.
- 3. Storage Capacity:
  - a. Fresh Food Compartment Volume: 20.0 cu. ft.
  - b. Freezer Volume: 20.0 cu. ft.
- 4. Construction: Stainless-steel inside and outside.
- 5. Doors: Four half-doors, two refrigerator, two freezer; automatic closing with 90 degree hold-open.
- 6. Compressors: Dual top mount.
- 7. Temperature Control: Exterior computerized thermometer with LED display.
- 8. Dimensions: 49.6" wide x 31.8" deep x 76.2" high.

2.4 CLEANING APPLIANCES

A. Dishwasher @ Police 205:

- 1. Basis-of-Design Product: GE Tall Tub Built-In Dishwasher, Model GLDA696PSS or a comparable product by one of the following:
  - a. BOSCH, BSH Home Appliances Corporation; ADA compliant unit.
  - b. Equal approved by the Architect.
- 2. Type: Under the counter, 24 inches wide, operable at water pressures from 15 to 120 psi.
- 3. Controls: Electronic with 4 cycles / 4 options
- 4. Construction: Stainless steel inside and outside
- 5. Dimensions: 24" wide x 32 7/20" high x 24" deep. Height adjusts from 32 11/32" to 34 ½"; ADA compliant under +34" high countertop.

B. Dishwasher @ Fire 212:

- 1. Basis-of-Design Product: GE Tall Tub Built-In Dishwasher, Model GLDA696PSS or a comparable product by one of the following:
  - a. BOSCH, BSH Home Appliances Corporation; ADA compliant unit.
  - b. Equal approved by the Architect.
- 2. Type: Under the counter, 24 inches wide, operable at water pressures from 15 to 120 psi.
- 3. Controls: Electronic with 4 cycles / 4 options
- 4. Construction: Stainless steel inside and outside
- 5. Dimensions: 24" wide x 32 7/20" high x 24" deep. Height adjusts from 32 11/32" to 34 ½"; ADA compliant under +34" high countertop.

C. Clothes Washer / Dryer (stacked unit) @ Fire 225a:

- 1. Basis-of-Design Product: Speed Queen Home Laundry Appliances, Model ATE50F Front Load Washer w/ Stacked Dryer (Electric Heat), or a comparable product by one of the following:
  - a. BOSCH, BSH Home Appliances Corporation.
  - b. General Electric Company.

- c. KitchenAid.
- d. Equal approved by the Architect.
- 2. Type: Freestanding, stacking, front loading; operable at water pressures from 15 to 120 psi.
- 3. Washer: 8 kg capacity, stainless steel inner and outer wash bowls, 3 water temperatures and 3 spin speeds.
- 4. Dryer: 9 kg capacity, 3 heat settings, manual controls.
- 5. Power requirements: 230V/50.
- 6. Finish: Manufacturer's standard white finish.

### PART 3 - EXECUTION

#### 3.1 INSTALLATION, GENERAL

- A. Built-in Equipment: Securely anchor units to supporting cabinets or countertops with concealed fasteners. Verify that clearances are adequate for proper functioning and rough openings are completely concealed.
- B. Freestanding Equipment: Place units in final locations after finishes have been completed in each area. Verify that clearances are adequate to properly operate equipment.

**END OF SECTION**

## SECTION 115000 – EDUCATIONAL and SCIENTIFIC EQUIPMENT

### PART 1 - GENERAL

#### 1.1 SUMMARY

- A. This Section includes the following:
  - 1. Audio / Visual Equipment.
  - 2. Laboratory Fume Hood at Police Evidence Room.

#### 1.2 SUBMITTALS

- A. Product Data: For each type of product indicated. Include installation instructions.
- B. Maintenance data.
- C. Fume Hood: Submit manufacturer's test data and installation instructions. Provide data indicating compliance with ANSI/ASHRAE Standard 110-1995. Provide color samples of manufacturer's finish. Provide rough-in drawings for mechanical and electrical services as related to the fume hood. Provide face opening, air volume and static pressure drop data.

#### 1.3 QUALITY ASSURANCE

- A. Installer Qualifications: An employer of workers trained and approved by manufacturer for installation and maintenance of units required for this Project.
- B. Electrical Components, Devices, and Accessories: Listed and labeled as defined in NFPA 70, Article 100, by a testing agency acceptable to authorities having jurisdiction, and marked for intended use.

#### 1.4 WARRANTY

- A. Special Warranty: Manufacturer's standard form in which manufacturer of each appliance specified agrees to repair or replace residential appliances or components that fail in materials or workmanship within specified warranty period.
  - 1. Fume Hood: Three-year limited warranty for defects in material and workmanship.

### PART 2 - PRODUCTS

#### 2.1 MANUFACTURERS

- A. In other Part 2 articles where titles below introduce lists, the following requirements apply to product selection:
  - 1. Basis-of-Design Product: The design for each residential appliance is based on the product named. Subject to compliance with requirements, provide either the named product or a comparable product by one of the other manufacturers specified.

#### 2.2 EDUCATIONAL EQUIPMENT

- A. Audio / Visual Equipment:
  - 1. Television, Fire EOC / Training 102: Basis-of-Design Product: Sony 52" BRAVIA W Series LCD HDTV. Quantity: 3 units.
    - a. Full HD 1080p resolution.
    - b. 120Hz refresh rate.
    - c. 100,000:1 dynamic contrast ratio.

- d. Ethernet Connections: 1 (Rear).
- e. HDMI PC Input.
- f. Weight: 57.1 lbs.
- 2. Television, Police Briefing 123: Basis-of-Design Product: Sony 40" BRAVIA W Series LCD HDTV. Quantity: 2 units.
  - a. Full HD 1080p resolution.
  - b. 120Hz refresh rate.
  - c. 100,000:1 dynamic contrast ratio.
  - d. Ethernet Connections: 1 (Rear).
  - e. HDMI PC Input.
  - f. Weight: 36.2 lbs.
- 3. Television Wall Mounts: Basis-of-Design Product: Peerless Flat Panel Tilt and Swivel Wall Mount for 32" to 50" LCD and Plasma Screens, Model PS-1. Quantity: 5 units.
  - a. Include PLP-UNM Adapter with each Wall Mount
  - b. Distance from Wall: 8.75" for PS-1.
  - c. Tilt / Swivel: +10 degrees, -5 degrees / +/- 15 degrees.
  - d. Maximum Load: 150 lb. for PS-1; 225 lb. for PS-2.
  - e. Weight: 24 lb. for PS-1; 26.5 lb. for PS-2.
- 4. Projector, Fire EOC / Training 102: Basis-of-Design Product: Powerlite G5000 Projector. Quantity: 1 unit.
  - a. Resolution: XGA (1024 x 768).
  - b. Brightness: 4000 lumens.
  - c. Contrast: 1000:1.
  - d. Lamp Life: 2000 hours.
  - e. Warranty: 2 years.
  - f. Weight: 14.6 lbs.
  - g. Network-ready for monitor and control – RJ-45 LAN connection.
- 5. Projector Ceiling Mount, Fire EOC / Training 102: Basis-of-Design Product: Peerless PJF2 Projector Mount for Multimedia Projectors up to 50 lbs; with internal cable management. Quantity: 1 unit.
- 6. Projector Ceiling Kit, Fire EOC / Training 102: Basis-of-Design Product: Peerless CMJ445 Lightweight Suspended Ceiling Kit to replace a 23" x 24" ceiling tile. Mounts to building structure with tie wires. Quantity: 1 unit
  - a. Maximum load: 50 lbs.
  - b. Color: White.

## 2.3 SCIENTIFIC EQUIPMENT

- A. Fume Hood, Police Evidence 119:
  - 1. Basis-of-Design Product: United Lab Equipment 'Isolator Bench Fume Hood', Model F-100-36 Frameless Vertical Sash, or a comparable product by one of the following:
    - a. Equal approved by the Architect.
  - 2. Air Flow Data: (1) 10 inch diameter duct; 505 CFM @ .15" SP; 325 CFM @ .06" SP.
  - 3. Interior Liner: Fiberglass reinforced polyester material (polyglass), ¼" thick, white.
  - 4. Sash Glass: ¼" clear tempered glass; full-view with 26 ½" opening.
  - 5. Dimensions: 36" wide x 31" depth (top depth) x 57 1/8" high. Overall depth is 35 ¼".
  - 6. Weight: Approximately 420 lb.

## PART 3 - EXECUTION

### 3.1 INSTALLATION, GENERAL

- A. Built-in Equipment: Install equipment in strict accordance with manufacturer's instructions. Securely anchor units to supporting cabinets or countertops with concealed fasteners. Verify that clearances are adequate for proper functioning and rough openings are completely concealed.



- B. Freestanding Equipment: Place units in final locations after finishes have been completed in each area. Verify that clearances are adequate to properly operate equipment.

3.2 ADJUSTING

- A. Fume Hood: Adjust sash and other moving parts to ensure smooth, near-silent and accurate operation with one hand and with uniform contact of rubber bumpers. Ensure counterweights operate without interference.

**END OF SECTION**

720 12<sup>th</sup> St.  
Richmond, CA 94801

**Phone:** 510-234-4200  
**Fax:** 510-234-4402

---

**Project Name:** Sausalito Fire & Safety  
**Attn:** Loren Umbertis  
**To:** Alten Construction, Inc.  
**Email:** salten@altenconstruction.com  
**Phone:** (510) 234-4200  
**FAX:** (510) 234-4402

**Date:** 11/24/09 12:40 PM  
**Project No.** 28011

**Number of pages including this transmittal sheet: 4**

---

**The attached Change Order is transmitted via: Email**

**G.C. Request No.** CO-059

**Remarks:**

**Signed:**  
Andrew Nortz

# Change Order Request Summary

**Alten Construction, Inc.**

720 12<sup>th</sup> Street  
 Richmond, CA 949801  
 Tel: (510) 234-4200  
 Fax: (510) 234-4402

G.C. Request No. CO-059  
 Directive (RFI, etc.)  
 Other Request Type. PCO  
 Other Request No.  
 Package No.  
 Submitted on 11/24/09 10:24 AM  
 Approved on  
**Project No.: 28011**

**Project: Sausalito Fire & Safety**  
**Description: Added Equipment per ASI-11**

**Scope of Change (Indicate the basis, the location, and the scope change):**

This change order is for the cost of items added in APR-11. This cost ONLY includes furnish and installation of the items specifically listed in this change order. Items not mentioned are not included in this pricing. Additional in wall rough-in associated with any and all of the items listed is not included in this change order. This work was added in later APRs and will be priced separately. No rough-in is being added if it was not specifically directed by the design team. Additional backing added as directed by Glass Architects is being tracked on T&M and will be submitted at a later date. The notes on each of the suppliers specific quotes apply REGARDLESS of the requirements set fourth by the APR. For example, Alten is not including a cost for extended warrantees past those specifically listed by the supplier. NOTE: the line item for Alten's carpenter install includes time for installing, Tack board, Marker board, Bicycle Wall Hooks, Fire-Arm Discharge Unit, Washer Dryer Extractor, TV Brackets, Display Cases, Projector mount, Projector Ceiling Kit, and Microwaves, Coffee Makers, Refrigerator (fire), and the Fume Hood.

**Cost Summary:**

1	General Contractor's Cost Breakdown		
a.	Labor	\$8,464	
b.	Material	\$0	
c.	Tax (material)	\$69	
d.	Equipment	\$0	
e.	Other items	\$65,148	
2	Subcontractors' Subtotal (see attachment)	\$53,871	
3	Total profit and overhead	\$15,621	
4	Bonds and Insurance at 2.2% of total	\$3,148	
5	<b>Change Order Request Total Cost</b>	<b>\$146,322</b>	

Compensable days: \_\_\_\_\_ Non-compensable days: \_\_\_\_\_

Above prices subject to cost changes if not accepted in 14 days. All amounts shown are in US Dollars. It is mutually agreed that, if job escalation is required, a loss of productivity will result and reimbursement will be due.

Notwithstanding any other provision of this change order, the following are not waived or released and all rights are reserved with respect to: (1) extensions of time in connection with the above work; and (2) items omitted from or not priced in the proposal, including items not specifically described, costs of associated delays, disruption, acceleration, impacts on other work, etc.

**No work will commence on the above until written authorization has been received in our office.**

**Adjustment of the Contract Sum: \$146,322**

ACI PM: \_\_\_\_\_ Date: \_\_\_\_\_ ACI Management: \_\_\_\_\_ Date: \_\_\_\_\_

Architect: \_\_\_\_\_ Date: \_\_\_\_\_ IOR: \_\_\_\_\_ Date: \_\_\_\_\_

61  
35

Construction manager: \_\_\_\_\_ Date: \_\_\_\_\_

**Owner's Response:** Accept: \_\_\_\_\_ Reject: \_\_\_\_\_ Other: \_\_\_\_\_

Signature: \_\_\_\_\_ Title: \_\_\_\_\_ Date: \_\_\_\_\_

6i  
36

# Change Order Request Cost Breakdown

**Alten Construction Inc.**  
 720 12<sup>th</sup> Street  
 Richmond, CA 949801  
 Tel: (510) 234-4200  
 Fax: (510) 234-4402

G.C. Request No. CO-059  
 Directive (RFI, etc.)  
 Other Request Type. PCO  
 Other Request No.  
 Package No.

**Project: Sausalito Fire & Safety**

**Project No.: 28011**

**Description: Added Equipment per ASI-11**

(All amounts shown are in US Dollars)

Cost Code	Description	Qty.	Price	Per	Amount
10000-GENERAL REQUIREMENTS	Foreman - Layout, purchasing, coordinating	24	83.58	1 Hour	2,005.92
61000-ROUGH CARPENTRY	Carpenter - Install Listed Items.	80	80.73	1 Piece	6,458.40
105114-LOCKERS POLICE	Metal Storage & Commercial Equipment as Listed	1	53,781.00	1 Piece	53,781.00
102113-TOILET COMPS & ACCS	Mop Holder	1	90.00	1 Piece	90.00
61000-ROUGH CARPENTRY	Circul-Air Hose Dryer	1	14,536.00	1 Piece	14,536.00
61000-ROUGH CARPENTRY	Fire Arm Discharge Unit	1	730.00	1 Piece	730.00
61000-ROUGH CARPENTRY	Washer-Extractor	1	11,665.00	1 Piece	11,665.00
61000-ROUGH CARPENTRY	Bick Racks	1	200.00	1 Piece	200.00
61000-ROUGH CARPENTRY	Markerboard	1	673.00	1 Piece	673.00
61000-ROUGH CARPENTRY	Display Cases	1	1,960.00	1 Piece	1,960.00
61000-ROUGH CARPENTRY	TV Brackets	1	2,430.00	1 Piece	2,430.00
61000-ROUGH CARPENTRY	Projector Ceiling Mount	1	303.00	1 Piece	303.00
61000-ROUGH CARPENTRY	Projector Ceiling Kit	1	234.00	1 Piece	234.00
61000-ROUGH CARPENTRY	Vent Fume Hood	1	4,525.00	1 Piece	4,525.00
61000-ROUGH CARPENTRY	Residential Appliances	1	21,951.00	1 Piece	21,951.00
10000-GENERAL REQUIREMENTS	Added Supplier Contracts, Purchasing, Etc. (10% of "Other")	1	5,941.00	1 Piece	5,941.00
	Profit and overhead Labor (15%)	1	1,270.00	1 Piece	1,270.00
	Profit and overhead Subcontractor (8.5%)	1	4,579.00	1 Piece	4,579.00
	Profit and overhead Other (15%)	1	9,772.00	1 Piece	9,772.00
	Bonds and insurance (2.2%)	1	3,148.00	1 Piece	3,148.00
<b>Tax</b>					<b>\$69.35</b>
<b>Total</b>					<b>\$146,322</b>

6  
37



FIREHOSE MAINTENANCE EQUIPMENT

Fax Number: 510-234-4402

Phone Number: 510-234-4200

Circul-Air Corp 800.795.1150  
 350 Pfingsten Road Suite 105 phone 847.480.9600  
 Northbrook, IL 60062 fax 847.480.9900  
 circul-air-corp.com email circulair@circul-air-corp.com

Send To: **Angie Sneed**

From: **Justin Christensen**

Company Address: **Alten Construction**

Date: **November 19<sup>th</sup>, 2009**

**Comments:**

Validating our quotation for Circul Air Equipment, we are pleased to confirm the following:

<u>Equipment:</u>	<u>Cost:</u>
Dual Purpose Electric Hose Dryer Series-100	\$13,500.00
Freight and Handling from factory, Owatonna, MN 55060 To ZIP 94965	\$1,035.83

**\*\*\*\*Prices Quoted are firm for 60 Days\*\*\*\***

**Total Pages, Including Cover: 1**

61  
38

# Savage Range Systems

Shooting Ranges and Bullet Traps

100 Springdale Rd., Westfield, MA 01085  
Tel: 800-370-0712 Fax: 413-562-1152



## Quotation

<b>Date</b>	<b>Quote #</b>
11/19/2009	Q09-1111
<b>Valid for</b>	<b>30 Days</b>

<b>Bill To</b>
Alten Construction Angie Sneed 720 12th Street Richmond, CA 94801

<b>Ship To</b>
Alten Construction Angie Sneed 720 12th Street Richmond, CA 94801

Part #	Description	Qty	U/M	Unit Price	Total
FS	Free Standing Check-It accommodates all calibers for handguns, shotguns and rifles up to 3000 FPE @ muzzle, including .308, 5.56 and 7.62 standard ball ammo. Intended to safely capture errant discharges. 19"x10"x27"; 8"x16" Base, 95 lbs.	1	Each	650.00	650.00
Shipping	Shipping & Handling via UPS Ground	1	Each	80.00	80.00
*BT(EHG)	Savage Range Systems, Inc. will accept credit card payments, checks or Net 30 terms upon credit approval. All prices are FOB factory, freight prepaid and added. Shipment: 2-4 weeks after receipt of order. Quote is valid for 30 days. Pricing in US Dollars.				0.00
Quoted by: Nancy Bristol, 413-642-4185				<b>Total</b>	<b>\$730.00</b>



Savage Range Systems, Inc. FID# 76-0335415  
GSA# 07F-9509S (x 5/31/11)

For questions, please contact: Nancy Bristol, Sales Support Assistant  
Direct Dial: 413-642-4185 or Email: nbristol@savagearms.com

Lei  
39



## Equipment Proposal

To:	Angie Sneed Alten Construction	From:	Bryan Maxwell ext. 316	
Email	asneed@altenconstruction.com	Pages:	1	(Including this cover)
Phone:	510-234-4200 ext. 25	Date:	November 18, 2009	
RE:	Milnor Gear Guardian Proposal	CC:		

### MILNOR GEAR GUARDIAN WASHER-EXTRACTOR PROPOSAL

35-40# Capacity, Capable of processing 3-4 SETS  
Proposal assumes delivery in summer 2009.

(1) MILNOR 30015 T5X GEAR GUARDIAN WASHER-EXTRACTOR, DESIGNED FOR DECONTAMINATING FIREFIGHTER GEAR, 35-40 LB. CAPACITY. "E-P EXPRESS" MICROPROCESSOR CONTROLS FEATURE 10 PRE-PROGRAMMED FORMULAS SPECIFICALLY FOR PROCESSING FIREFIGHTER GEAR, WITH SPACE TO CREATE 20 ADDITIONAL FORMULAS; EASY OPERATION. LARGE WASH CYLINDER for better tumble-washing action; INTERMEDIATE EXTRACTION for effective rinsing of heavy soiled gear to remove contaminants. PRE-EXTRACT DISTRIBUTION SPEED helps prevent vibration caused by bulky gear during extract causing out-of-balance loads. Voltage 208-240/60/3 or 1 Phase

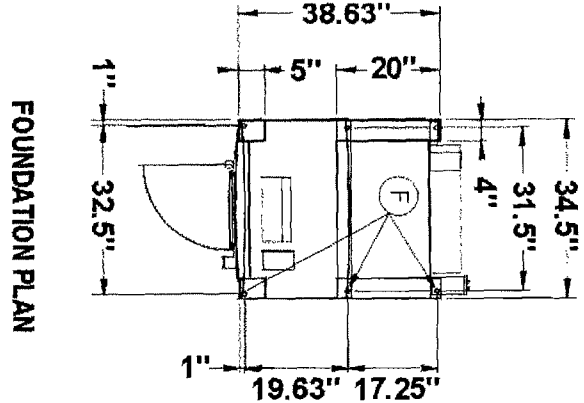
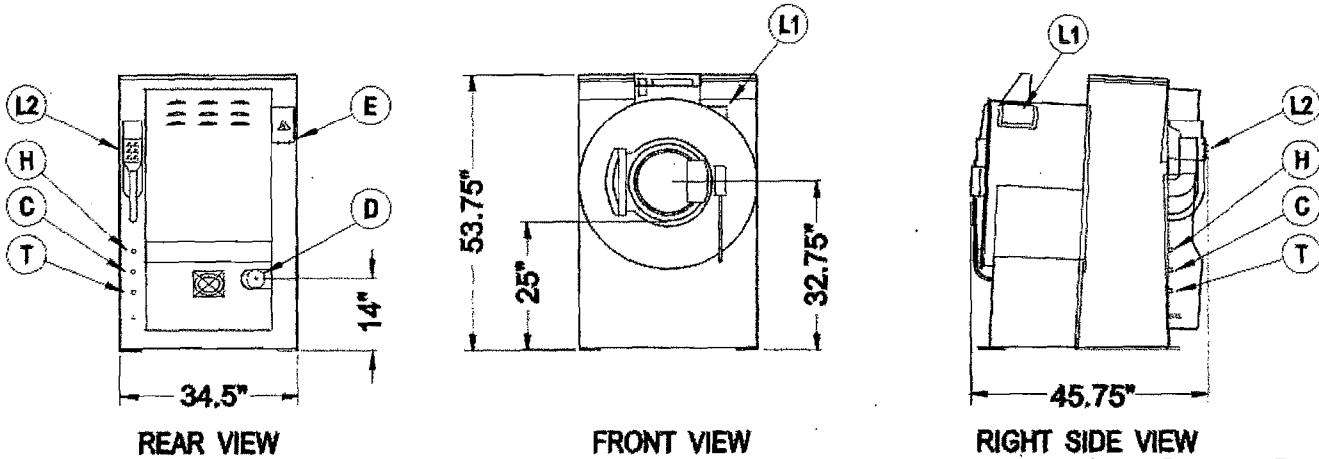
Price Each	\$9,200.00
Factory Freight	345.00
Sales Tax	859.09
Installation Budget	1,260.00
Total Budget	\$11,664.09

### Installation Scope of work

- Local delivery from Hayward to Sausalito.
- Uncrate equipment and remove debris.
- Set new washer-extractor in place
- Level, bolt and grout washer.
- Final connection of utilities by others.
- Provide equipment startup and operator training after utility connections are made by others.



# 35 - 40 lb. Rigid Mount Washer-Extractor 30015T5X Gear Guardian



- Legend:**
- C Cold water inlet connection, 3/4" NPT
  - D Drain to sewer, 3" pipe connection
  - E Electrical connection
  - F Anchor bolt holes, 13/16"
  - H Hot water inlet connection, 3/4" NPT
  - L1 Soap chute
  - L2 Liquid supply inlets
  - T Third water inlet connection, 3/4" NPT

See dimensional drawing for fastening details.  
Consult Factory for foundation requirements

**Specifications:**

Maximum Capacity lbs	35 - 40
Wash Speed RPM	32
Distribution Speed RPM	64
High Speed Extract RPM	500
Final Extract G Forces	106
Approx. net weight lbs	761

**Features at a Glance:**

- Single motor inverter drive
- Electrically-operated valves
- Auto tension V-belt drive
- Choice of E-P Express (X controller – 30 programmable formulas
- Cylinder side sheets have large perforations
- High, perforated ribs within cylinder
- Liquid soap connectors standard
- Triple water seals protect bearings
- Standard models fit through 36" door
- 5 year limited warranty on frame, cylinder, and shell

ELECTRICAL SPECIFICATIONS					
Voltage	Running Amps	Phase	Frequency	Fuse (Amps)	Circuit Breaker (Amps)
208/240	7	1 or 3	60	FRN15	15
380	4.5	3	50	FRS15	15
380	4.5	3	60	FRS15	15
480	3.5	3	60	FRS15	15

See Fuse and Wire Size manual MAEFUSE1AE for safety information.

Lei  
41

105000.2.2.G.



Palmer Group LLC  
 1072 Folsom Street #328  
 San Francisco CA 94103  
 Ph: 415-333-6428 Fx: 415-333-2032  
 info@bikeparking.com

# Quotation

DATE	ESTIMATE #
11/17/2009	3284

NAME / ADDRESS
Alten Construction Heather Chierici / Angie Sneed 720 12th St Richmond, CA 94801

PROJECT

ITEM	DESCRIPTION	QTY	COST	TOTAL
WH01	Wall Hook 1-bike BLACK	7	21.00	147.00T
ZBolt	Zinc Fasteners for SOLID CONCRETE WALL. If not concrete wall then please delete this cost. Contractor should then determine best fastener.	14	1.25	17.50T
Shipping	Shipping UPS Ground		20.00	20.00
	Sausalito Public Safety Facilities			
PRICE-HOLD	currently in stock Palmer Group will hold the above listed price for thirty (60) days from date of estimate.		0.00	0.00
Terms	Terms: Advance Check or Credit Card		0.00	0.00
	asneed@altenconstruction.com Marin County 09		9.00%	14.81
Thanks for your continued support.			<b>TOTAL</b>	<b>\$199.31</b>

61  
42



# PBS SUPPLY CO.

7013 South 216<sup>th</sup> Street Kent, WA 98032  
 Antioch, CA Office  
 Phone (925) 776-5611 Fax (925) 776-5722  
 California License #788205  
 WHITEBOARDS-BULLETINBOARDS-PROJECTION SCREENS-SPECIALTIES

11/19/09  
 Alten Construction  
 Attn: Angie Sneed

Page 1 of 2

\*REVISED\*  
 Bid Proposal for  
**Sausalito Public Safety Buildings**  
 Sausalito, CA 94965

We propose to Furnish FOB Jobsite, Materials Only, the following

**Section 101100: Visual Display Surfaces**

Claridge

Markerboard: Series 4 LCS #92 White, 7/16" Formaldehyde Free Particleboard Core, .005 Back, Maprail w/Natural Cork Insert, Flat Tray, Satin Trim,

1 ea. 4' x 4' Markerboard

Tackboard: Series 4 Type CO, Designer Fabric - #1691 Quartz, on 1/4" Cork on 1/4" HDBD, Satin Trim

1 ea. 4' x 4' Tackboard

1 ea. 7' x 4' Tackboard

Standard Factory Colors, Construction & Hardware

For the sum of **\$ 673.00** ✓  
 SALES TAX INCLUDED

**Section 101200: Display Cases**

Claridge

Display Case: Contemporary Series Surface Mounted Hinged Door Bulletin Cabinet, Designer Fabric @ Rear Panel, Satin Aluminum Housing, 3/16" Tempered Glass Doors w/Lock & 2 Keys, 2-Door Units

1 ea. 4'9" x 3'3" Display Case

1 ea. 6' x 4' Display Case

Standard Factory Colors, Construction & Hardware

For the sum of **\$ 1,960.00** ✓  
 SALES TAX INCLUDED

**Section 115000: Educational & Scientific Equipment**

**2.2.A-3: Television Mounts**

Peerless

3 ea. PS-2 42-71" Flat Panel Wall Mount, 10.2" From Wall w/ Tilt & Swivel

2 ea. PS-1 32-50" Flat Panel Wall Mount, 8.75" From Wall w/ Tilt & Swivel

5 ea. PLP-UNL Security Adapter Plate For a 32-60" Flat Panel Screen

Standard Factory Colors, Construction & Hardware

For the sum of **\$ 2,430.00** ✓  
 SALES TAX INCLUDED

61  
43



# PBS SUPPLY CO.

7013 South 216<sup>th</sup> Street Kent, WA 98032  
Antioch, CA Office  
Phone (925) 776-5611 Fax (925) 776-5722  
California License #788205  
WHITEBOARDS-BULLETINBOARDS-PROJECTION SCREENS-SPECIALTIES

11/19/09  
Alten Construction  
Attn: Angie Sneed

Page 2 of 2

**\*REVISED\***  
Bid Proposal for  
**Sausalito Public Safety Buildings**  
Sausalito, CA 94965

**Section 115000: Educational & Scientific Equipment**

**2.2.A-5: Projector Ceiling Mount**

Peerless

1 ea. PJF2-UNV Universal Projector Mount

Standard Factory Colors, Construction & Hardware

For the sum of **\$ 303.00** ✓  
SALES TAX INCLUDED

**Section 115000: Educational & Scientific Equipment**

**2.2.A-6: Projector Ceiling Kit**

Peerless

1 ea. CMJ455 Suspended Ceiling Mount

Standard Factory Colors, Construction & Hardware

For the sum of **\$ 234.00** ✓  
SALES TAX INCLUDED

**Exclusions:** Phased Delivery. Installation. Wall Backing/Blocking. Structural work of any kind. Any electrical work. Any boards on Operable Walls. All tackwall paneling not specified above. Any work required in Modular Buildings not specified above, as those specialties are provided by the building manufacturer. This bid is based upon the understanding that no bond will be required.

Addenda Noted: 0

Sincerely,

April Klamm  
PBS Supply

**SALES TAX INCLUDED**

Prices quoted firm for thirty (30) days from above date, renewable at our option.

P.B.S. Supply Co. Inc. shall be excused from all responsibility or liability for non performance or delayed performance caused by labor strikes, fire, flood, accident, transportation difficulty, material or fuel or power shortage, war, governmental action or any contingency of whatsoever nature beyond its control. "Our terms are net 30 days, subject to credit approval." This bid is based upon the understanding that no bond will be required.

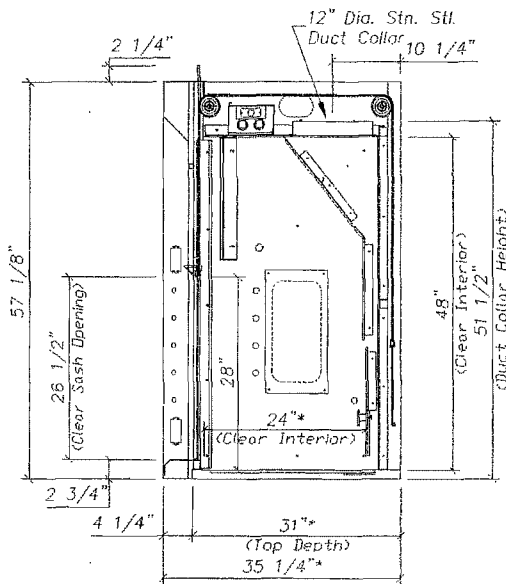
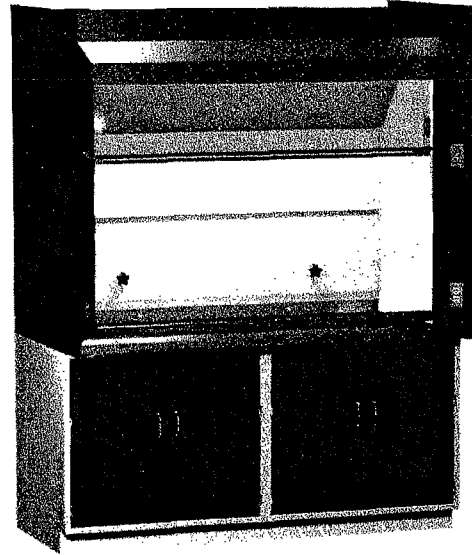
61  
44



## F-100 Bench Hood - Frameless Vertical Sash

The **ISOLATOR** bench hood with a frameless vertical sash is the result of extensive research and development to produce the industry's safest, most adaptable fume hood. It has an expansive interior view, superior containment and functional design along with a stylish appearance. The **ISOLATOR's** design and construction enhances its value by providing:

- Unparalleled user safety
- Full hood access for easy set ups
- Years of maintenance free service
- Unmatched ease of use
- Unique design qualities for unlimited customization possibilities
- Field conversion between Constant Air Volume (CAV) and Variable Air Volume (VAV)
- Hoods available in "Knock Down" (KD) mode for transport and assembly in restricted areas



\* NOTE: D30 HOOD DIMENSIONS: 30" (CLEAR INTERIOR)  
37" (TOP DEPTH) / 41 1/4" (O.A. DEPTH)

### F-100 Bench Hood Features

- Unsurpassed containment (designed and tested to exceed ASHRAE 110-1995)
- Unique chain driven sash mechanism that comes with a lifetime warranty
- Galvanized Steel Pan Superstructure
- Transparent Viewpass bypass system
- Stainless steel air foil
- Aerodynamically designed Airplane wing style sash handle enhances the perimeter containment
- Vertical sashes provide the greatest hood interior access
- Full view sash with 26 1/2" opening
- Quality engineering ensures years of reliable service

## F-100 Series - Isolator Bench Fume Hoods - Ordering Information

### F-100 Series Air Flow Data

Catalog Number	Duct Diameter	28" Vertical Open @ 100 FPM	18" Vertical Open @ 100 FPM
F-100-36	1 : 10"	505 CFM @ .15" SP	325 CFM @ .06" SP
F-100-48	1 : 10"	739 CFM @ .32" SP	475 CFM @ .13" SP
F-100-60	1 : 12"	972 CFM @ .27" SP	625 CFM @ .11" SP
F-100-72	1 : 12"	1205 CFM @ .41" SP	775 CFM @ .17" SP
F-100-96	2 : 10"	1672 CFM @ .41" SP	1075 CFM @ .17" SP

### F-100 Series Product Numbers

F-100-36	Bench 36"	Frameless	
F-100-36D30	Bench 36"	Frameless	30" Deep
F-100-48	Bench 48"	Frameless	
F-100-48D30	Bench 48"	Frameless	30" Deep
F-100-60	Bench 60"	Frameless	
F-100-60D30	Bench 60"	Frameless	30" Deep
F-100-72	Bench 72"	Frameless	
F-100-72D30	Bench 72"	Frameless	30" Deep
F-100-96	Bench 96"	Frameless	
F-100-96D30	Bench 96"	Frameless	30" Deep

### F-100 Series Liner Options

White Polyglass is standard. Please see the **Hood Liners** section for available options.

### F-100 Series Electrical Options

Fascia is pre-punched with two electrical cutouts (four cutouts total). Please see the **Electrical Fixtures** section for available options.

### F-100 Series Plumbing Fixtures

Fascia is pre-punched with five 3/4" dia. holes to accept rod driven remote fixtures (ten holes total). Please see the **Plumbing Fixtures** section for available options.

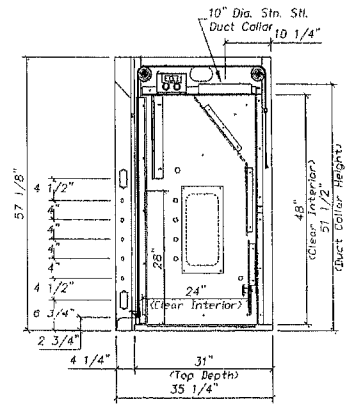
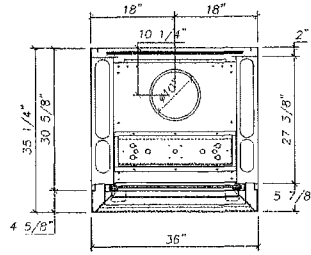
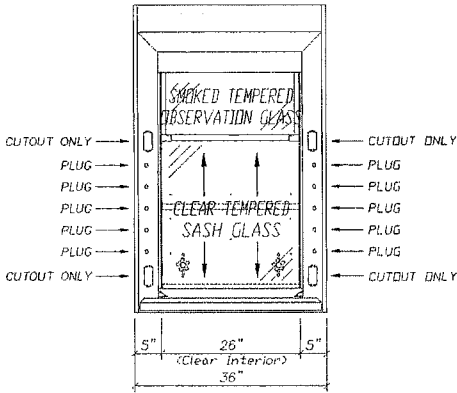
### F-100 Series Fume Hood Accessories

Please see the **Fume Hood Accessories** section for available options.

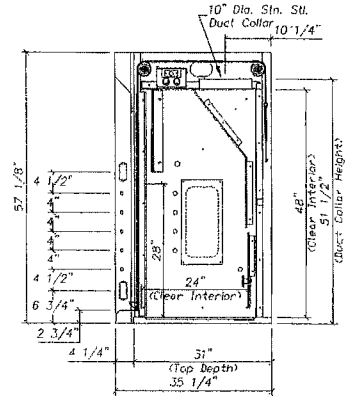
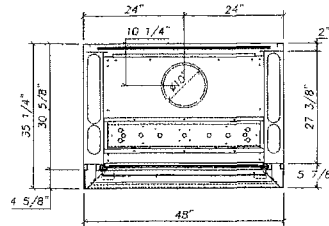
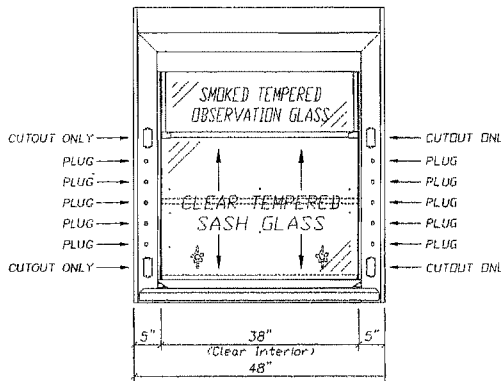
# F-100 Series - Isolator Bench Fume Hoods - Product Dimensions

F-100 Series - Isolator Bench Fume Hoods - Product Dimensions

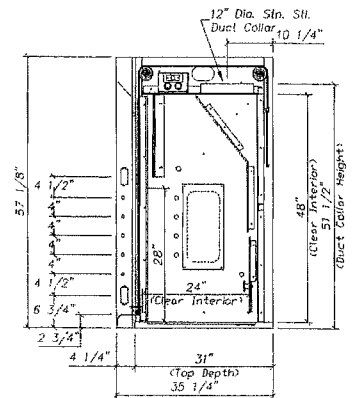
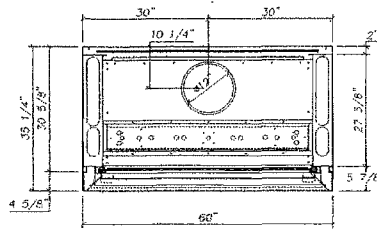
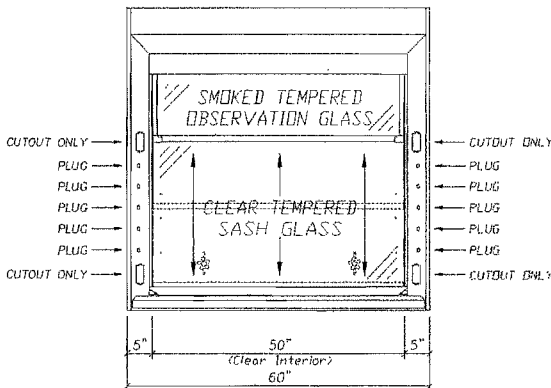
## F-100-36 - 36" Bench Hood



## F-100-48 - 48" Bench Hood



## F-100-60 - 60" Bench Hood



6i  
48





Phone: 800-548-7426

Fax: 716-685-7967

sales@unitedlabequip.com

www.unitedlabequip.com

Laboratory Products

Service

Installation

Certified HVAC Testing

**General:** All orders are subject to credit approval and acceptance by United Lab Equipment, Inc. (ULE) in Depew, New York. Estimate reflects a single delivery and single phase installation, with all related building trade work (done by others) integrated within the laboratory furniture system/fume hood to be sequenced in conjunction with the initial system assembly. Any requests from the buyer which will delay or reschedule the project; ULE will immediately invoice for all outstanding balances. Phased projects will be subject to terms as provided on our estimate.

**Prices:** Prices are subject to change without notice and all orders are accepted at the prices prevailing at the time of shipment. All prices listed will be increased by any tax imposed by any governmental body. A valid tax exemption certificate must be provided for all sales not including tax. All orders for goods with total invoice prices of less than \$50.00 net will be invoiced at \$50.00 all prices are in U.S. Dollars. All prices are FOB factory. If insurance is required for shipments; it must be included on Buyer's purchase order and will be at the customer expense. ULE prices exclude any bid or performance bond costs or adherence unless specifically noted in the estimate.

**Quote Pricing:** This price is valid for 90 days from the date of the quote. Purchase commitment must occur within 90 days for quote to be valid; after 90 days please contact the Estimating Department for a re-quote with current pricing. The Price quoted is based is based on the quantity ordered. Phased projects may incur different discounts if the request/order is not made at the same time.

**Freight:** Estimates do not include freight that will be added to the final invoice

**Taxes:** Prices do not include any taxes for fees (Local, State, Federal Excise or Export).

**Standard Product:** ULE's quote is for standard product, construction and design unless otherwise noted. The prices are only for the items on the estimate. It is the buyers responsibility to check the estimate to make sure all items that were asked to be quoted are included.

**Product Payment Terms:** A deposit of 25% is required for all orders at time of the purchase order being issued in order to hold quoted price. The deposit is also used for mobilization to the project for the start of installation. Payment balance of 75% is due net 30 days from shipping date. **NO RETENTION IS PERMITTED.** You may receive more than 1 invoice because the shipping cost may be billed on a separate invoice. All shipping costs are billed directly to the purchaser from ULE and are payable net 30 days. A service charge of 1 -1 1/2% per month (18% per annum) or the maximum percentage rate permitted by law will be added to all past due invoices. In the event you default in payment, you shall be liable for all collection cost incurred by ULE including, but not limited to, attorney and collection agency fees, and related disbursements. All standard equipment shall be subject to a restocking fee if canceled. A RMA number must be obtained from ULE prior to return

**Installation Payment/ Labor Terms:** All installation services are subject to mobilization cost and progress billing, mobilization shall be billed at 25% of the installation quoted price, and is payable 10 days prior to the project start date. Progress billing for the installation cost shall be calculated based on the installation total value as listed on the ULE quotation, 90% of the installation cost is payable prior to the installation completion date. All labor provided by ULE shall be trained factory installers.

**Change Orders:** ULE does not accept any changes after approved purchase order and drawings have been issued by the customer. All change requests must be made in writing prior to ULE releasing the order for fabrication. All change requests made after the order is sent to fabrication will be at the buyer's request.

**Storage:** Storage of material is not included unless indicated on our estimate. All material that is stored is at the buyer's request.

Accepted By: \_\_\_\_\_

Date: \_\_\_\_\_

6.  
49

**Delivery:** ULE's responsibility ceases upon delivery of the product in good order to the carrier. Delivery to the carrier shall constitute the carriers delivery to the Buyers loading dock. When inside delivery is required, labor shall be an additional cost of state prevailing wages per man hour with a minimum of 8 hour per man, inside delivery cost are payable to ULE from the Buyer. **Inspection of all material must take place within 24 hours of delivery. It is in your best interest to note on the bill of lading "possibility for concealed damage" to protect yourself. ULE takes no responsibility for damaged material after the time stated. Any merchandise manufactured due to damage/defect after the inspection period has expired may be at buyer's request.** ULE is not responsible for delays in deliveries which are due to unavailability of raw materials, fire, flood, accident, strike, embargo, war, labor stoppage, inadequate transportation, delay or default by vendors, government regulations or any other causes beyond its control. All delivery dates are subject to credit approval and account status at the lime shipment is made. No shipment will be made if the Buyers account is in arrears or if shipment would cause any applicable credit limit to be exceeded. All shipping of product from "seller" becomes the property of "buyer" at the lime of shipment Prices are subject to change. If special packaging or marking is required such as packing of orders by floor or room, add 5% to prices shown. **Job site conditions must accept full-size trailers unless prior notice has been given at the time order. Additional charges apply to special delivery requirements due to site conditions (example: lift gate).**

**Contract Terms:** ULE only accepts contract terms when product and installed is provided by United Lab.

**Design and Drafting:** ULE price does not include shop drawings, nor do we produce shop drawings, unless agreed upon prior to the quotation request.

**Installation Terms: United Lab Equipment, Inc (hereinafter "Seller") Responsibilities:**

**Option # 1:** Non-mechanical installation of laboratory furniture systems and ULE fume hood provided by seller, including worktops, storage units, sinks, services panels, fixtures, shelving, pegboards, fume hoods, and components. All projects installed by ULE shall include a submittal package drawings and a quotation. Prior to product fabrication the purchaser must provide ULE with a purchase order and a signed copy of the ULE fabrication drawings. All change orders must be in writing from the purchaser. No changes to the purchase order or drawings are allowed after ULE has received final approval of the drawings and purchase order from the purchaser. Work by others: All final mechanical connections, plumbing / gas service supply vent and drain lines, traps, rough-ins, pipe supports, components, connections, electrical supply lines, data and communications devices, junction boxes, wiring and connectors. All Mechanical devices, ductwork, including framing, support and connection lo localize exhausts units. When option 1 or 2 is not listed on the quotation; the quotation is based on Option # 1 Non-mechanical installation.

**Option # 2** Mechanical installation shall include the final connections of all plumbing/ gas services, supply/ exhaust fans/ ventilation, drain lines, traps, rough-ins, piping supports, ductwork including framing support components and connections to exhaust systems, electrical supply lines, data and communications devices, junction boxes, wiring and connectors. ULE shall only provide final connections for items listed on our proposal; all items that require code update will call for owner approval and will be invoiced on a time and material bases.

**Job Site requirements of Buyer:** Buyer shall provide and bear the cost of secure on-site storage to seller for staging, assembly and transfer of materials to the installation location. The building environment conditions to be tempered equal to final installation location. Provide unrestricted access to an elevator and loading docks as needed by site conditions. Provide job site substantially complete at time of scheduled laboratory system installation with regard to: finish flooring, final paint and trim finishes, ceiling grid and utility rough-ins for floor and walls, room lighting, electrical services and HVAC operational. The installation area must be free of debris and other Trades.

**Indemnify United Against All Loss:** You will indemnify United harmless against all loss, including, but not limited to, property damage, loss of profit or revenue, loss of use of any property, cost of capital cost of purchase or replacement of equipment, personal or bodily injury, or death arising out of any agreement that is governed by the terms and conditions of this offer or any way related by any third party to the goods sold. **All ULE insurance coverage shall be standard coverage as provide by ULE all additional coverage shall be at the cost of the Buyer.**

Accepted By: \_\_\_\_\_

Date: \_\_\_\_\_

Lei  
50

# System Concepts, Inc.

510 Myrtle Avenue, Suite 209  
So. San Francisco, CA 94080

[www.SCIstorage.com](http://www.SCIstorage.com)

Tel 650 873-8023  
Fax 650 873-8024

FILING LIBRARY MUSEUM STORAGE  
specialists

Contractor's License No. 734396  
Authorized Spacesaver Area Contractor

## SCOPE OF WORK

\$53,781 Bid Amount

Date: 11/18/09

To: Alten Construction

From: Catherine Belmont

### Sausalito Public Safety Buildings

System Concepts, Inc. will be submitting a bid for this project. This Scope information is provided so you can evaluate our cost details. Please call with any questions concerning the information we are submitting.

#### BID CONDITIONS

- Bid is per plans and specifications, as described in the bid documents.
- Bid includes materials, freight, handling, California sales tax and installation during normal working hours, Monday through Friday.
- Colors to be selected from Spacesaver's standard color selections.
- It is prime contractor's responsibility to have installation site clear and ready for installation prior to delivery of materials and commencement of installation. Additional cost will be charged for delays caused by site not ready for installation. Delivery and installation schedule will be confirmed by System Concepts, Inc. in advance of all work. Storage and other costs will be charged for requested schedule changes which occur within 21 calendar days of final scheduling. Storage will be charged for holding materials in access of 2 weeks.
- The cost for **electrical installation**, finished floor covering, government permits or inspections, seismic calculations and floor load evaluations are not included as part of this bid.

#### PRODUCT SPECIFICATIONS

##### Section 105000 – Metal Storage Specialties

##### Spacesaver Cabinets and Shelving

\$900 Police – Metal Cabinet, Meter Shop 113 – note: heavy duty shelving with locking doors

\$3364 Police – Metal Weapons Lockers, Armory 114- Universal Weapons Cabinets / total 2 cabinets

\$3364 Police- Weapons Lockers, Evidence 119 – Universal Weapons Cabinets / total 2 cabinets

\$670 Fire – Hazmat Cabinet, Repair Shop 120

\$3200 Police – Metal Shelving, Storage 115 / 3 units locking doors

\$8200 Police – Metal Shelving, Evidence 119 note: 24 units with heavy duty shelving / 2 cabinets with locking doors

61  
51

**Police – Wall-mounted bike rack, Sallyport 107 Not Included**

\$925 Fire – Hose Rack, Apparatus Bay 114 / total 3 units

**\$3200 Add Police – Safe – Fire King equal to American Security Products, Evidence 119**

Section 112000 – Commercial Equipment

\$3096 Police – Evidence Refrigerator, Police Evidence 119 – True Food Service Equipment

\$4087 Police – Evidence Freezer, Police Evidence 119 – True Food Service Equipment

\$17,200 Police- Drying Cabinet, Police Evidence Room – DSM Law Enforcement Products

Note: Not including Hose Dryer Cabinet & Washer / Extractor in Section 112000

Note: Not including Firearm Discharge Unit, Police Armory 114

\$2893 Installation – Includes all products listed above does not include electrical hook-ups.

\$2460 7323 lbs. Freight Charges – Includes all products above





Appliances and Decorative Plumbing

SAN RAFAEL SHOWROOM, 530 WEST FRANCISCO BLVD. C-1, SAN RAFAEL, CA 94901  
 Showroom Phone:(415)453-6070 Fax:(415)453-8234

Corporate address: 476 Rohnert Park Expressway, (P.O. Box 1789) Rohnert Park, CA. 94927-1789

**Quotation**  
 Customer Copy

575

**Account #: CAL4241**  
**ALTEN CONSTRUCTION**  
 720 12TH ST  
 RICHMOND CA 94801

Referral: NONE  
 Builder:  
 Designer:

**SAUSALITO PUBLIC SAFETY**  
 ANGIE SNEED 510.234.4200 X 25  
 SAUSALITO CA 94965  
 Primary Phone: 00000000510  
 Secondary Phone: 00000000510  
 Cross Street NONE

Quote # 902706  
 Page 1

Customer PO	Salesperson	Via	Terms	Quote Date
	Dan Odetto (415)462-7610 / Frank Fromme (415)462-7611	WHSE	NET 30 DA	11/12/09
Item	Description	Qty	Price	Total
	COOKING 2.2 RANGE @ FIRE 212			
VDSC536-4QSS	VIKING 36" W./BBQ SS DUAL FUEL RANGE	1	8,279.00	8,279.00
P36BG8SS	VIKING 8" SS BACK SPLASH	1	270.00	270.00
PEB2060SMSS	MICRO @ POLICE 205			
	GE PROF 2CF SS MICROWAVE	1	244.00	244.00
	DO YOU NEED A TRIM KIT FOR THIS TO BUILD IN??			
	MICRO @ FIRE 212			
ZE2160SFSS	MONO MICRO.2.1CF. SS MICROWAVE	1	417.00	417.00
	DO YOU NEED A TRIM KIT TO BUILD THIS IN??			
	REFER/FREEZR @ POLICE 205			

**Reserve your spot at "Food For Thought"**  
 Join us for our FREE culinary education program with Chef Rachelle. Learn more about your appliance in this hands-on class. Please call your Sales Associate for specific dates and times.

**ESP Extended Service Protection**  
 Protect your investment and peace of mind with the ESP Plan. Additional coverage ensures service on your appliances after the warranty expires. Ask your Sales Associate for more information.

**Price Guarantee:**  
 Standards of Excellence provides quality products at competitive prices. In a highly competitive industry, it is not possible to monitor competitors pricing on all products. Some product suppliers control the prices of their products and those products can't be discounted. On other brands and products, we guarantee that we will meet or beat any competitive offer from a local authorized dealer for thirty days after delivery of the product. Present a copy of an advertisement or written quote, showing a lower price, and we will gladly refund the difference.

<b>see last page for order totals.</b>	

This quote does not represent an order. To order merchandise or services, please contact your local Standards of Excellence sales representative. This quote and its acceptance is subject to approval of our credit department if using a trade account.

61  
55

PLEASE READ CAREFULLY

**MERCHANDISE PRICE SUBJECT TO CHANGE WITHOUT NOTICE**

**DEPOSIT:** 50% Deposit is Required on all orders and must be maintained on all undelivered product.  
100% of balance is required 7 days prior to confirmed delivery.

**PRODUCT AVAILABILITY:** Products subject to manufacturer availability. Special orders/colors and new models have large fluctuations in availability. We shall not be liable for delays cause by strikes, government restriction, manufacturer availability or other causes beyond our control.

**DELIVERY:** Additional charges may apply if site conditions are more complex than originally stated.

**SPECIAL ORDER:** Special order merchandise cannot be changed, cancelled or returned once order is placed. 100% deposit is required on all special orders.

**RETURN POLICY:** No returns accepted on the following brands: Abbaka, Aga, Designer Line Hoods, La Cornue, SubZero, Vent a Hood, Viking, Wolf. Other merchandise may not be returned without prior approval, and must be accompanied by a Standards of Excellence invoice number and date of purchase. A minimum 15% RESTOCKING FEE will apply to all returns, in original, unopened carton. Products out of carton and open cartons will require a higher restocking fee.

**TAXES:** Prices subject to all applicable local, state and/or excise taxes in effect at time of shipment.

**DAMAGED MERCHANDISE:** Products on this Order should be delivered in good condition and seller is not liable for any damage or breakage occurring hereafter. All freight damaged merchandise MUST be reported within 48 HOURS of time of delivery. Products not inspected within 48 hours may not be returned.



**Standards<sup>SM</sup>**  
Of Excellence  
Appliances and Decorative Plumbing

SAN RAFAEL SHOWROOM, 530 WEST FRANCISCO BLVD. C-1, SAN RAFAEL, CA 94901  
Showroom Phone: (415) 453-6070 Fax: (415) 453-8234  
Corporate address: 476 Rohmert Park Expressway, (P.O. Box 1789) Rohmert Park, CA. 94927-1789

**Quotation**  
Customer Copy

315

**B I L L T O**  
Account #: CAL4241  
ALTEN CONSTRUCTION  
720 12TH ST  
RICHMOND CA 94801  
Referral: NONE  
Builder:  
Designer:

**S H I P T O**  
SAUSALITO PUBLIC SAFETY  
ANGIE SNEED 510.234.4200 X 25  
SAUSALITO CA 94965  
Primary Phone: 00000000510  
Secondary Phone: 00000000510  
Cross Street NONE

Quote # 902706  
Page 2

Customer PO	Salesperson	Via	Terms	Quote Date
	Dan Odetto (415)462-7610 / Frank Fromme (415)462-7611	WHSE	NET 30 DA	11/12/09
Item	Description	Qty	Price	Total
PFCG1PJYSS	GE PROF 20.8CF FRENCH DOOR BOTTOM MOUNT	1	2,479.00	2,479.00
	REFER/FREEZER @ FIRE 212 DISHWASHER @ FIRE 212			
XXNEW MODEL	JHD-40DT ASCEND COMMERCIAL REFER	1	3,729.00	3,729.00
	DISHWASHER @ POLICE 205 DISHWASHER @ FIRE 212			
GLDA696PSS	GE TALL TUB SS ADA DISHWASHER	2	563.00	1,126.00
	CLOTHESWASHERDRYER @ FIRE 225A			
WFCV6450UC	BOSCH 27" WASHER WHITE	1	975.00	975.00
WTV6330US	BOSCH 27" WHITE DRYER ELECTRIC	1	975.00	975.00
WTZ1601	BOSCH SIMPLE STACK KIT	1	29.00	29.00
DEL&HAULWAY	SOE DROP OFF DELIVERY	1	85.00	85.00

**Reserve your spot at "Food For Thought"**  
Join us for our FREE culinary edu-tasting program with Chef Rachelle. Learn more about your appliance in this hands-on class. Please call your Sales Associate for specific dates and times.

**ESP Extended Service Protection**  
Protect your investment and peace of mind with the ESP plan. Additional coverage ensures service on your appliances after the warranty expires. Ask your Sales Associate for more information.

**Price Guarantee:**  
Standards of Excellence provides quality products at competitive prices. In a highly competitive industry, it is not possible to monitor competitors pricing on all products. Some product suppliers control the prices of their products and those products can't be discounted. On other brands and products, we guarantee that we will meet or beat any competitive offer from a local authorized dealer for thirty days after delivery of the product. Present a copy of an advertisement or written quote, showing a lower price, and we will gladly refund the difference.

see last page for order totals.

This quote does not represent an order. To order merchandise or services, please contact your local Standards of Excellence sales representative. This quote and its acceptance is subject to approval of our credit department if using a trade account.



6157

**PLEASE READ CAREFULLY**

**MERCHANDISE PRICE SUBJECT TO CHANGE WITHOUT NOTICE**

**DEPOSIT:** 50% Deposit is Required on all orders and must be maintained on all undelivered product.  
100% of balance is required 7 days prior to confirmed delivery.

**PRODUCT AVAILABILITY:** Products subject to manufacturer availability. Special orders/colors and new models have large fluctuations in availability. We shall not be liable for delays cause by strikes, government restriction, manufacturer availability or other causes beyond our control.

**DELIVERY:** Additional charges may apply if site conditions are more complex than originally stated.

**SPECIAL ORDER:** Special order merchandise cannot be changed, cancelled or returned once order is placed. 100% deposit is required on all special orders.

**RETURN POLICY:** No returns accepted on the following brands: Abbaka, Aga, Designer Line Hoods, La Cornue, SubZero, Vent a Hood, Viking, Wolf. Other merchandise may not be returned without prior approval, and must be accompanied by a Standards of Excellence invoice number and date of purchase. A minimum 15% **RESTOCKING FEE** will apply to all returns, in original, unopened carton. Products out of carton and open cartons will require a higher restocking fee.

**TAXES:** Prices subject to all applicable local, state and/or excise taxes in effect at time of shipment.

**DAMAGED MERCHANDISE:** Products on this Order should be delivered in good condition and seller is not liable for any damage or breakage occurring hereafter. All freight damaged merchandise **MUST** be reported within 48 HOURS of time of delivery. Products not inspected within 48 hours may not be returned.



**Standards<sup>SM</sup>**  
Of Excellence

SAN RAFAEL SHOWROOM, 530 WEST FRANCISCO BLVD. C-1, SAN RAFAEL, CA 94901  
Showroom Phone: (415) 453-6070 Fax: (415) 453-8234

*Appliances and Decorative Plumbing*

Corporate address: 476 Rohmert Park Expressway, (P.O. Box 1789) Rohmert Park, CA. 94927-1789

**Quotation**  
Customer Copy

35

**Account #: CAL4241**  
**ALTEN CONSTRUCTION**  
720 12TH ST  
RICHMOND CA 94801

Referral: NONE  
Builder:  
Designer:

**SHIPTO**

**SAUSALITO PUBLIC SAFETY**  
ANGIE SNEED 510.234.4200 X 25  
SAUSALITO CA 94965  
Primary Phone: 00000000510  
Secondary Phone: 00000000510  
Cross Street NONE

Quote # 902706

Page 3

Customer PO	Salesperson	Via	Terms	Quote Date
	Dan Odetto (415)462-7610 / Frank Fromme (415)462-7611	WHSE	NET 30 DA	11/12/09
Item	Description	Qty	Price	Total
	PLEASE BE AWARE TAHT ALTHOUGH YOUR SPEC ASKS FOR			
	5 YR WARRANTYS THESE PRODUCTS WILL NOT CARRY TAHT KIND OF			
	WARRANTY AS THIS IS CONSIDERED A COMMERCIAL			
	APPLICATION THANKS			
XXNEW MODEL	COMMERCIAL COFFEE SYSTEMS	2	359.00	718.00
PIRANGE36	INSTALL 36" PRO RANGE	1	325.00	325.00
PIREFRIG/S	INSTALL FREE-STANDING REFER	1	100.00	100.00
PIDW	INSTALL STANDARD DW NO PANELS	2	125.00	250.00
INSWASHDRYSTACKED	INSTALL WASHER/DRYER STACKED	1	210.00	210.00

**Reserve your spot at "Food For Thought"**  
Join us for our FREE culinary edu-tasting program with Chef Rachelle. Learn more about your appliance in this hands-on class. Please call your Sales Associate for specific dates and times.

**ESP Extended Service Protection**  
Protect your investment and peace of mind with the ESP plan. Additional coverage ensures service on your appliances after the warranty expires. Ask your Sales Associate for more information.

**Price Guarantee:**  
Standards of Excellence provides quality products at competitive prices. In a highly competitive industry, it is not possible to monitor competitors pricing on all products. Some product suppliers control the prices of their products and those products can't be discounted. On other brands and products, we guarantee that we will meet or beat any competitive offer from a local authorized dealer for thirty days after delivery of the product. Present a copy of an advertisement or written quote, showing a lower price, and we will gladly refund the difference.

Quote Bid Accepted By \_\_\_\_\_

Date \_\_\_\_\_

Merchandise	19,241.00
Delivery	85.00
Sub Total	19,326.00
Tax	1,739.35
Warranty	.00
Install	885.00
Freight	.00
Final Total	21,950.35

This quote does not represent an order. To order merchandise or services, please contact your local Standards of Excellence sales representative. This quote and its acceptance is subject to approval of our credit department if using a trade account.

6:59

**PLEASE READ CAREFULLY**

**MERCHANDISE PRICE SUBJECT TO CHANGE WITHOUT NOTICE**

**DEPOSIT:** 50% Deposit is Required on all orders and must be maintained on all undelivered product. 100% of balance is required 7 days prior to confirmed delivery.

**PRODUCT AVAILABILITY:** Products subject to manufacturer availability. Special orders/colors and new models have large fluctuations in availability. We shall not be liable for delays cause by strikes, government restriction, manufacturer availability or other causes beyond our control.

**DELIVERY:** Additional charges may apply if site conditions are more complex than originally stated.

**SPECIAL ORDER:** Special order merchandise cannot be changed, cancelled or returned once order is placed. 100% deposit is required on all special orders.

**RETURN POLICY:** No returns accepted on the following brands: Abbaka, Aga, Designer Line Hoods, La Cornue, SubZero, Vent a Hood, Viking, Wolf. Other merchandise may not be returned without prior approval, and must be accompanied by a Standards of Excellence invoice number and date of purchase. A minimum 15% **RESTOCKING FEE** will apply to all returns, in original, unopened carton. Products out of carton and open cartons will require a higher restocking fee.

**TAXES:** Prices subject to all applicable local, state and/or excise taxes in effect at time of shipment.

**DAMAGED MERCHANDISE:** Products on this Order should be delivered in good condition and seller is not liable for any damage or breakage occurring hereafter. All freight damaged merchandise **MUST** be reported within 48 HOURS of time of delivery. Products not inspected within 48 hours may not be returned.

