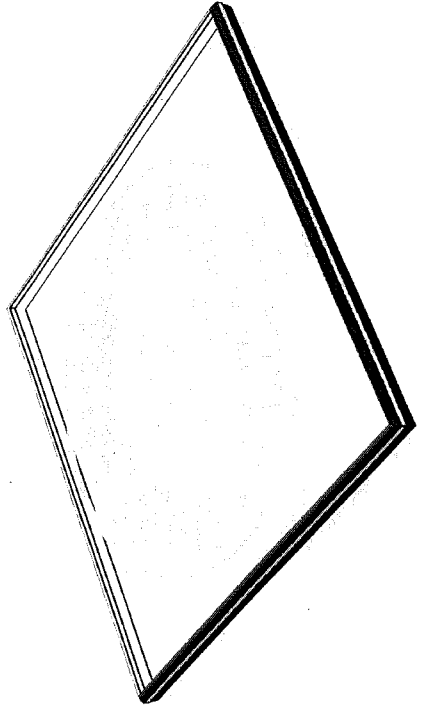


City of Sausalito

Status Update on EPA Order Compliance



4B13
4-6-10
1

Introduction

- EPA Order requires that :
 - “Beginning immediately ... consistently and substantially reduce the frequency and volume of sewage spills.”
 - “(E)liminate conditions in (our) collection system that cause or contribute to wastewater spills, bypasses, or effluent limit violations.”
 - “SMCSD shall...achieve consistent compliance with its 2007 [NPDES] permit”. (CWA-309(a)-08-031)

Quarterly Sewage Spill Report

Submitted January 15, 2010



CITY OF SAUSALITO

January 15, 2010

Jo Ann Cola
US Environmental Protection Agency, Region 9
75 Hawthorne Street (WTR-7)
San Francisco, CA 94105

Michael Chie
San Francisco Bay Region
California Regional Water Quality Control Board
1315 Clay Street, Suite 1400
Oakland, CA 94612

Jonathan Leong, Mayor
Adam Pollizer, City Manager

SUBJECT: CITY OF SAUSALITO QUARTERLY SEWAGE SPILL REPORT

October 1, 2009 THROUGH December 31, 2009
USEPA Amended Order for Compliance
Docket No CWA-309(a)-08-031 dated November 24, 2008

Dear Ms. Cola and Mr. Chie:

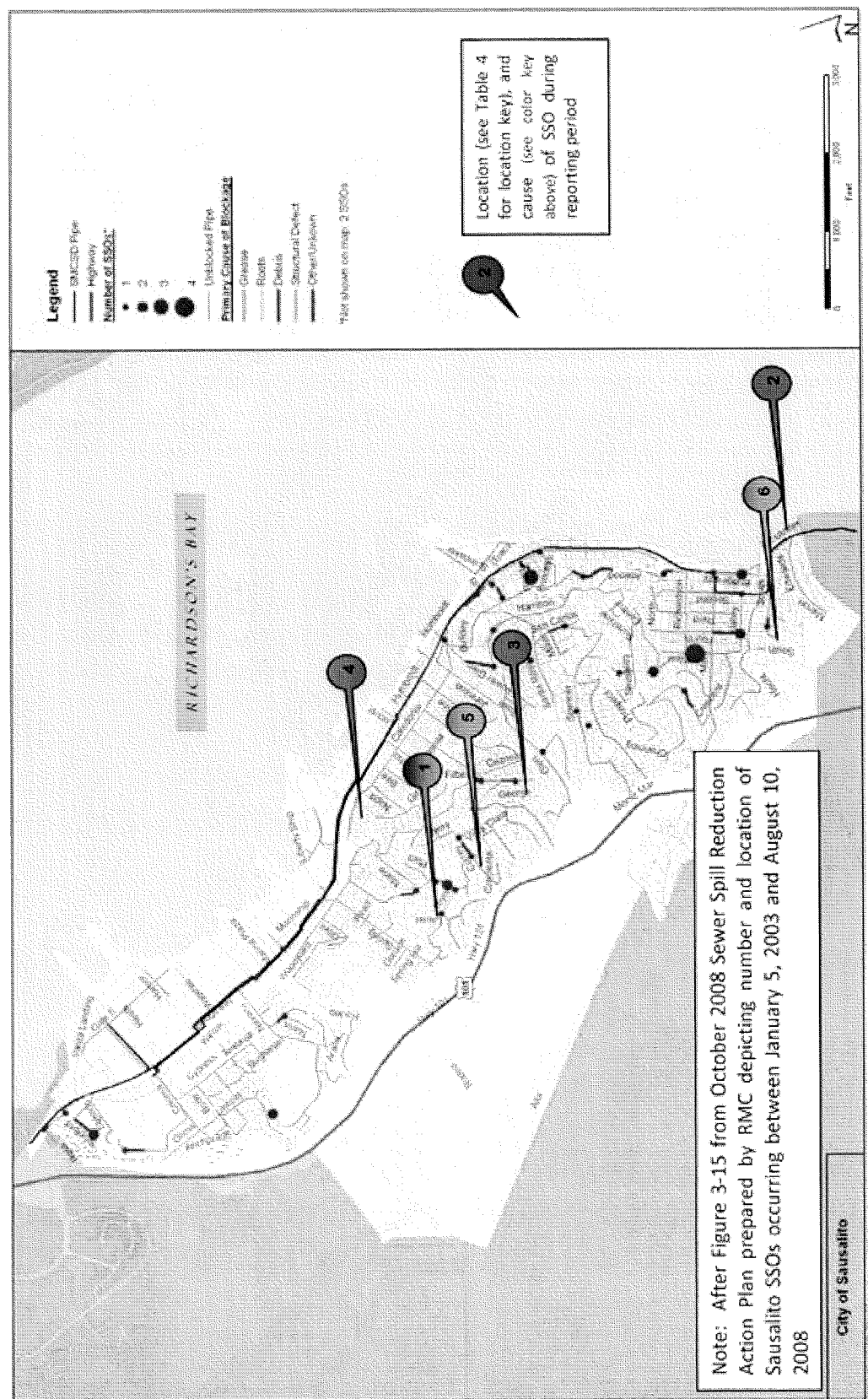
The purpose of this Report is to provide the tabulation of sewage spills that occurred in the City of Sausalito during the fourth calendar quarter of 2009, beginning October 1, 2009 and ending December 31, 2009 (the "Reporting Period"). This Report is submitted pursuant to requirements included in the San Francisco Bay Regional Water Quality Control Board Order (the "2008 Modified State Order") (Order No. 2008-0003-DWQ) issued May 7, 2008 and subsequently modified as to monitoring and reporting requirements by State Board Order No. 2008-0002-FRC (the "2008 Modified State Order"). In addition, this report is required by Section IX Findings of Violation and Amended Order issued to the City of Sausalito, Sausalito-Marin City Sanitary District ("SMCSD") and Tamalpais Community Services District ("TCSO"). For purposes of this Report, the City refers to sewage spills and sanitary sewer overflows ("SSOs") as SSOs.

Two (2) public SSOs and five (5) private SSOs occurred during the Reporting Period. A graphic summary of the subject SSOs is included, as Figure 1 attached. Also attached are four tables providing additional information on the SSOs. The public SSOs resulted from (in one case) root intrusion into terra cotta pipe and in the other from the presence of pigs. The private SSOs resulted from sewer ejector system failure, root intrusion, pipeline failure and contractor error during a private sewer lateral replacement. The attached Table 1 summarizes the number of SSOs. The estimated volumes of SSOs contained and returned to the sewer system, as well as the estimated volumes reaching waters of the State are

4B13
6

Quarterly Summary

CITY OF SAUSALITO QUARTERLY SEWAGE SPILL REPORT
 October 1, 2009 THROUGH December 31, 2009
 Figure 2. Location of SSOs – October 1, 2009 – December 31, 2009 with Historic Data from January 5, 2003 – August 10, 2008



4B13
4

EPA Compliance – Status and Look-Ahead

- **Sanitary Sewer Overflow Response Planning**
 - Open positions closed March 26, 2010
- **Collection System Maintenance and Management**
 - Coordinating with SMCSD and TCSD on pump station and force main renovations and upgrades

EPA Compliance – Status and Look-Ahead (cont'd)

- **Collection System Assessments**
 - April 15, 2010 submittal -- schedule for system-wide condition assessment – report due October 15, 2010 summarizing condition
- **Capacity Assurance**
 - October 15, 2010 submittal on flows and hydraulic capacity
- **Infrastructure Renewal Program**
 - Priority 1B (Spinnaker/Anchor) bids April 2010 (\$860,000) expect construction complete Dec 2010
 - Priority 1A (Gate 5 Road) in final design – expect to bid Spring 2011 assuming timely reimbursement through SRF loan
 - October 15, 2010 submittal requires long-term (10 yr) plan for repair, rehab and replacement

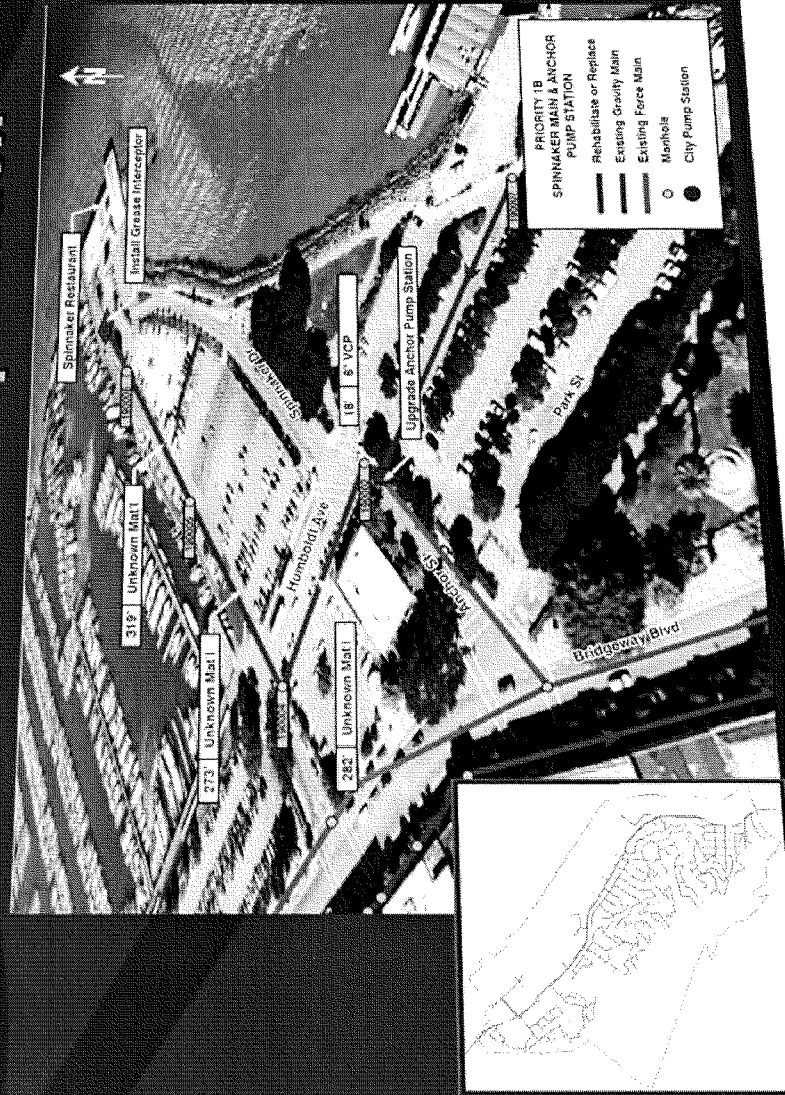
Priority Projects

Project 1a - Gate 5 Road



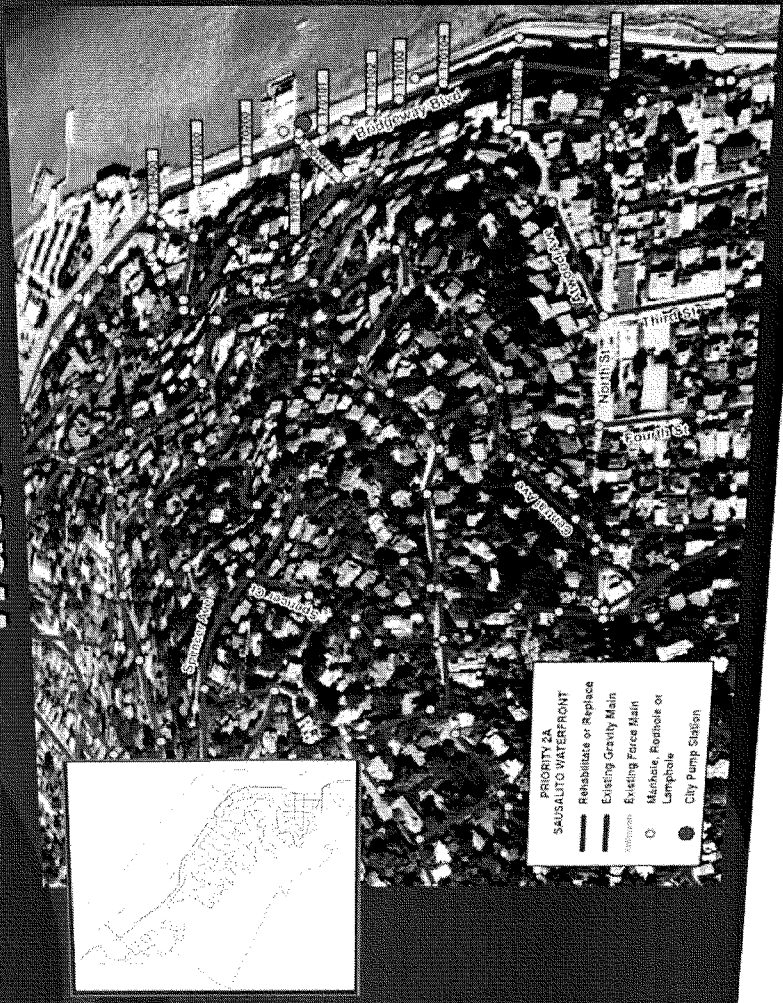
4813
7

Project 1b - Spinnaker Main & Anchor Pump Station



4B13
8

Project 2a - Bridgeway Waterfront



4B13
9

Project 2b – Bridgeway Valley to Main



+ Alexander Avenue Projects

**PRIORITY 2B
BRIDGEWAY (VALLEY TO MAIN)**

- Rehabilitate or Replace
- Existing Gravity Main
- Existing Force Main
- Manhole
- SACSD Pump Station



Project 3a – Hurricane Gulch

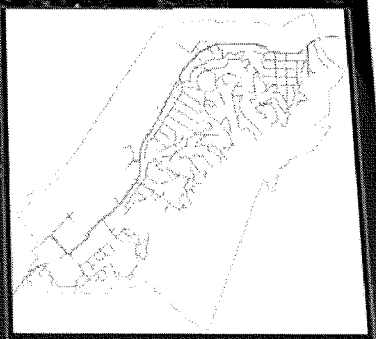


Project 3b -- Toyon to Woodward



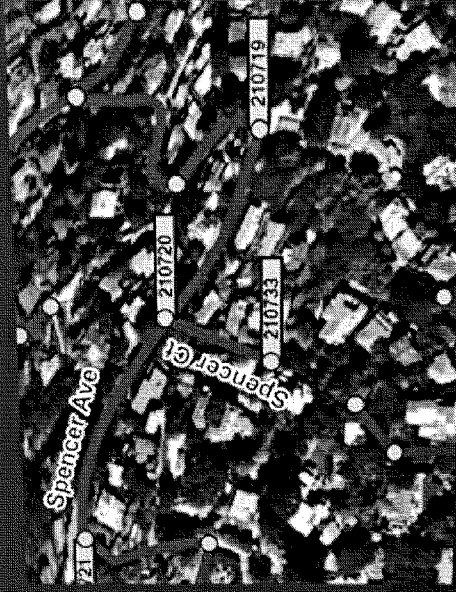
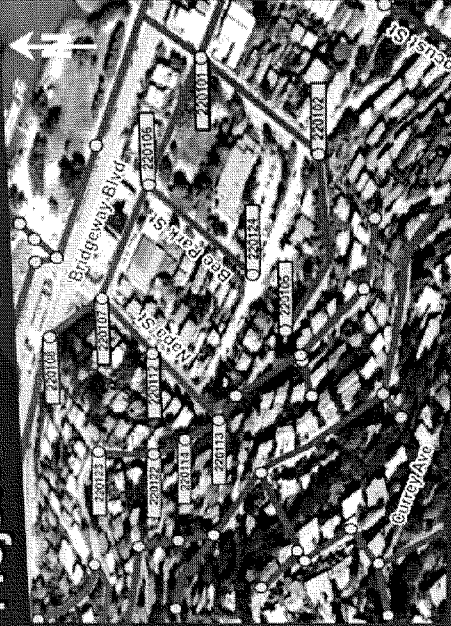
**PRIORITY 3B
TOYON TO WOODWARD**

- Rehabilitate or Replace
- Existing Gravity Main
- Manhole, Rehole or Lampole
- Lampole



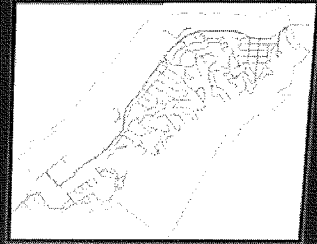
4813
12

Project 3e – Napa & Bee Park Streets



Project 3f – Spencer Court

Project Drivers: Maintenance issues
Greatest Challenges: Similar to earlier projects
Construction Methods: Pipe burst; open cut



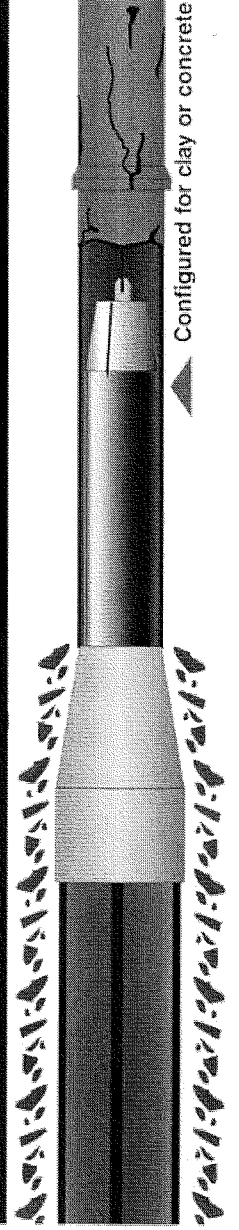
Gate 5 Road

- Bechtel Marin Ship-vintage system
- Sags with leaking joints
- Potential environmental issues with open-cut
 - Soils
 - Groundwater
- Potential environmental issues with bursting
 - ACP
- Differential settlement analysis

Gate 5 Road

Rehabilitation Methods Pipe Bursting

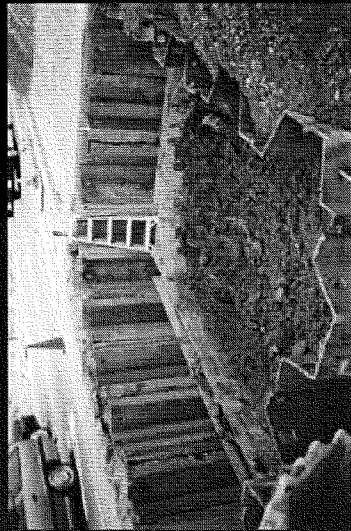
- Excavate insertion pit
- Excavate and restore all laterals
- Bypass flow
- Pull bursting head through existing pipe followed by new HDPE pipe
- Seal manhole penetrations
- Restore flow



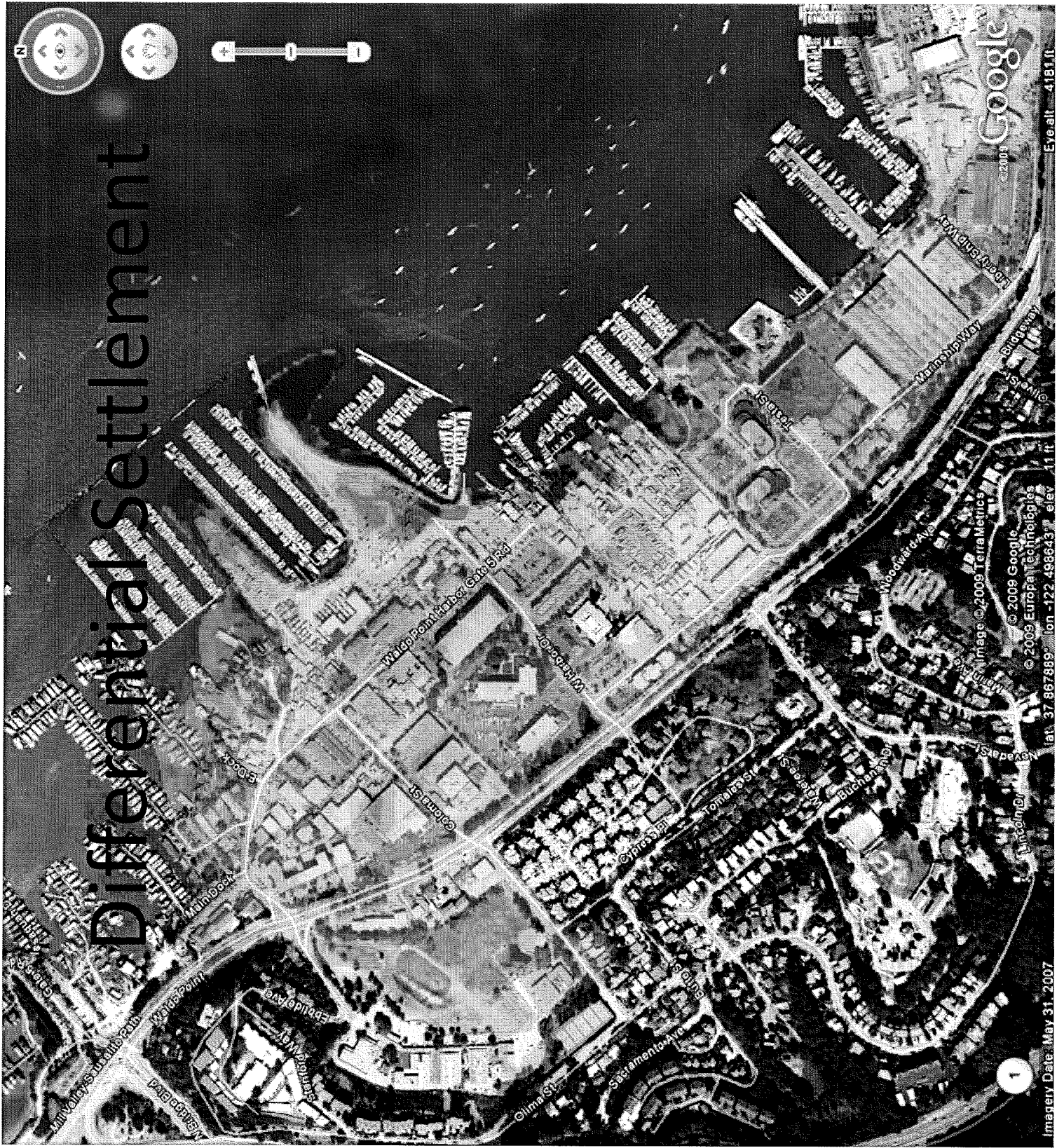
Gate 5 Road

Rehabilitation Methods Open Cut

- Dig trench
- Install shoring & dewatering
- Install pipe and connect laterals
- Backfill and compact
- Repave

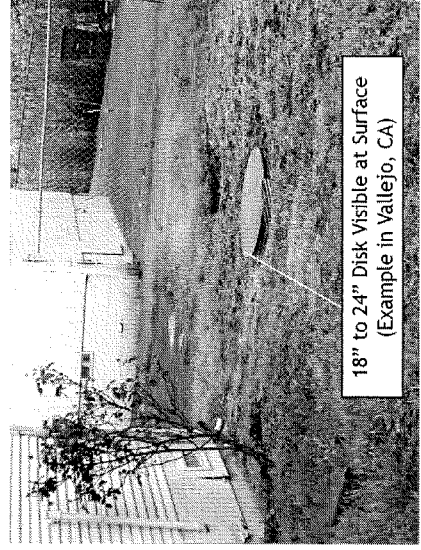
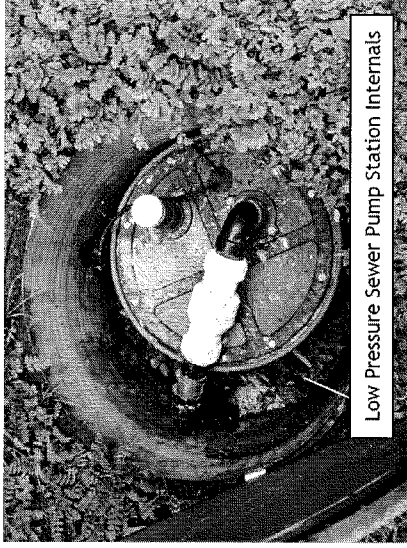
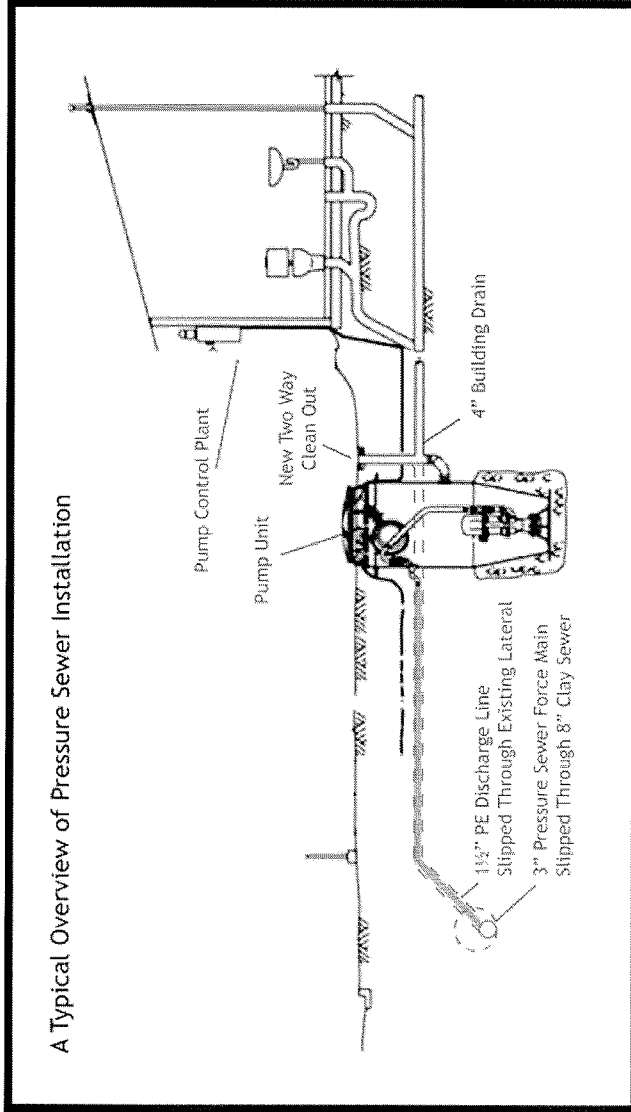


Differential Settlement



4813
17

Gate 5 Road



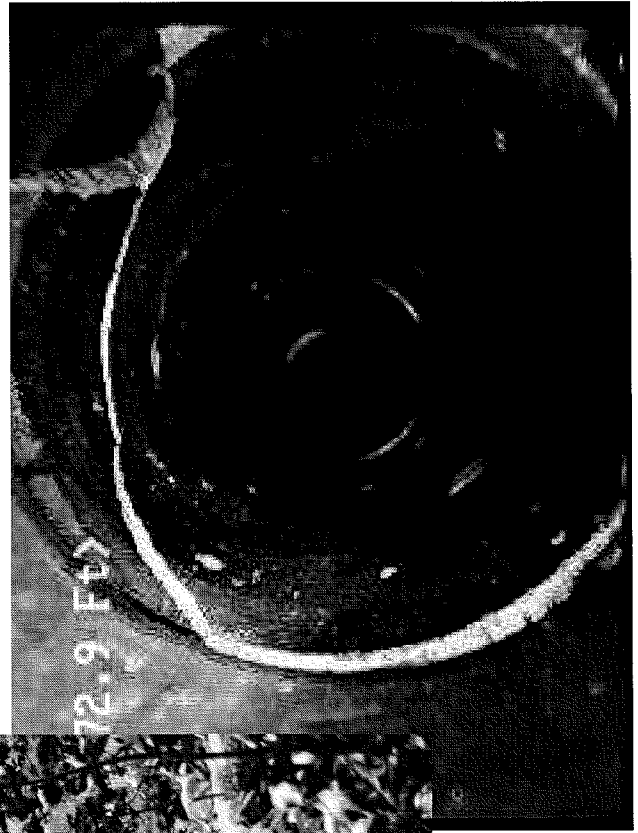
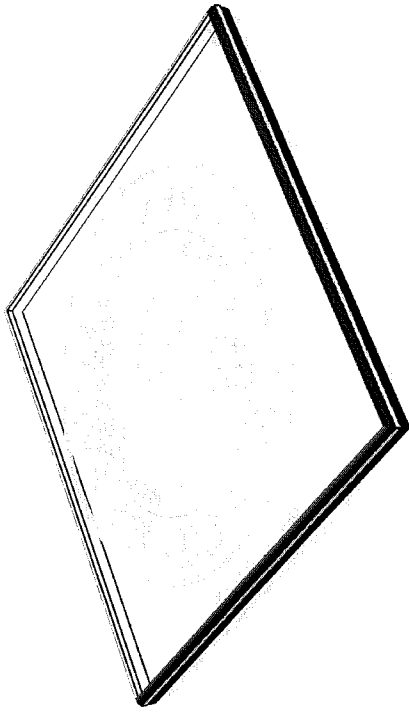
4B13
18

Spinnaker/Anchor

- Differential settlement
- New lift station to serve City Parcels leased to restaurant, and yacht harbor, install grease interceptor to serve restaurant
- Replace Humboldt Avenue gravity sewer segment by bursting or open cut
- Rehabilitate Anchor Lift Station
 - SCADA
 - Alarms
 - Transfer switch for generator power

Spinnaker/Anchor

- Environmental status -- completed
 - Clean Air Act Conformity Analysis
 - Cultural Resources Literature Review and Tribal Consultation
 - Biological Resources Evaluation
 - Cultural Resources Site Assessment
 - Permits – JARPA w/BCDC – applied for



4BB
21