



STAFF REPORT

SAUSALITO CITY COUNCIL

AGENDA TITLE:

2010 Rental Bike Parking Plan Update

RECOMMENDED MOTION:

Note and File only – No Action Required

SUMMARY

During the past two years, the City of Sausalito has progressively enhanced, improved, and controlled rental bicycles' path of travel and parking areas. Bike parking racks, bike parking areas, and instructions to bicyclists have been provided as has signage along Bridgeway. Quarterly meetings are held between the City of Sausalito, the Marin Bicycle Coalition, ferry services and the bicycle rental companies to help coordinate the content of tourist information literature and hiring of a bike coordinator to help facilitate the orderly boarding onto the ferries. Last year the placement of the bicycle racks, the overall number of the racks, and how they fit into the character of the downtown area locations were discussed and adjusted from the prior year. In the upcoming "high-season," Staff plans to better accommodate bicycle parking in a portion of the travelled lanes in Lot 1 rather than utilize the ferry landing observation deck as was used last year. This change will be accomplished with a modest investment in above-ground planters and pavement markings in order to evaluate its performance without permanent construction. This improvement will be coupled with the same arrangements for other parking locations that were effective last year.

BACKGROUND

In 2008 it became very apparent that our City lacked the capacity to park all the bikes coming to town due to the quick increases in the bike rental business. Community members complained about Yee Tock Chee Park, the Horizons Pier, and downtown sidewalks being over-run with bikes and blocking access. Bike collisions were at a ten year high and traffic law violations involving bikes increased. The Police and Public Works Departments experimented with changes to address the bike parking issues. The bike rental companies donated bike racks that were deployed downtown. A few additional signs were installed to better direct bike riders.

Item #: 6C 6A
Meeting Date: 3-16-10 4-6-10
Page #: 1

In 2009, the police, public works, and Councilmember Herb Weiner developed a coordinated effort to engage with the three main bike rental companies, examine all the possible locations downtown to accommodate increased bike parking and develop more instructional signage while addressing the complaints received in 2008. The result of this plan was a greater compliance the signage and parking at the designated bicycle parking locations. The four main bike parking areas downtown used to accommodate a estimated 2500 bicycles who travel through Sausalito per summer day, are the at front of the Bank of America building, near the Ferry Landing, the Official Lot next to Parking lot #1, and Gabrielson Park. Some viewed the placement of the racks in front of the Bank of America and the Ferry Landing as unsightly and not in character with the downtown area.

ISSUES

In order to keep bicycle visitors from leaving their bicycles in a haphazard manner around the downtown area, the City provided easily accessible bike parking to cyclists. Bicycle parking needs to be centrally located in the downtown area for these first time visitors.

Last year the City Council approved placement of bicycle racks near the ferry landing with additional racks placed in front of the Bank of America. During the summer weekends, these racks were at full or near capacity. Parking lot #1 and the ferry landing was the main location and destination for rental bike riders to park in 2008 and 2009. Staff plans to reconfigure the south/west end of Municipal Lot 1 to provide a zone for the bicycles to be parked away from the ferry dock and out of the flow of traffic in Lot 1. Racks should remain in the Bank of America area, but in a lesser amount.

Moving the bike racks into the parking lot adjacent to the ferry landing will not alter the current flow of rental bike traffic for these visitors. This change will clear the ferry observation deck area of the ferry landing for greater use by pedestrians. Additional signage will also be posted at this location to prohibit bike parking. Further, the flow of vehicular traffic through the area will be facilitated by changing pavement markings and placing above-ground tree planters to divert southbound vehicles around the bicycle parking area.

Representatives the ferry companies, bike rental companies, and the Marin County Bicycle Collation are planning to be in attendance at the March 16, 2010 City Council meeting to answer questions if needed.

Item #: 602 6A
Meeting Date: _____
Page #: 2

FISCAL IMPACT

- 1. Reconfigure the south end of Lot #1, install cement planters or bollards and re-stripe the southwest end of the lot. Estimated cost: \$8,070

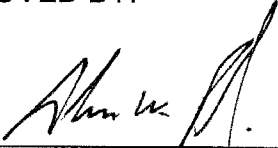
ATTACHMENTS

PowerPoint

PREPARED and SUBMITTED BY:

APPROVED BY:

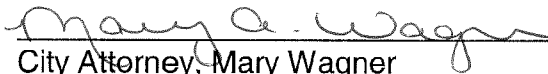
Chief of Police, Scott Paulin



City Manager, Adam Politzer

REVIEWED BY:

REVIEWED BY:



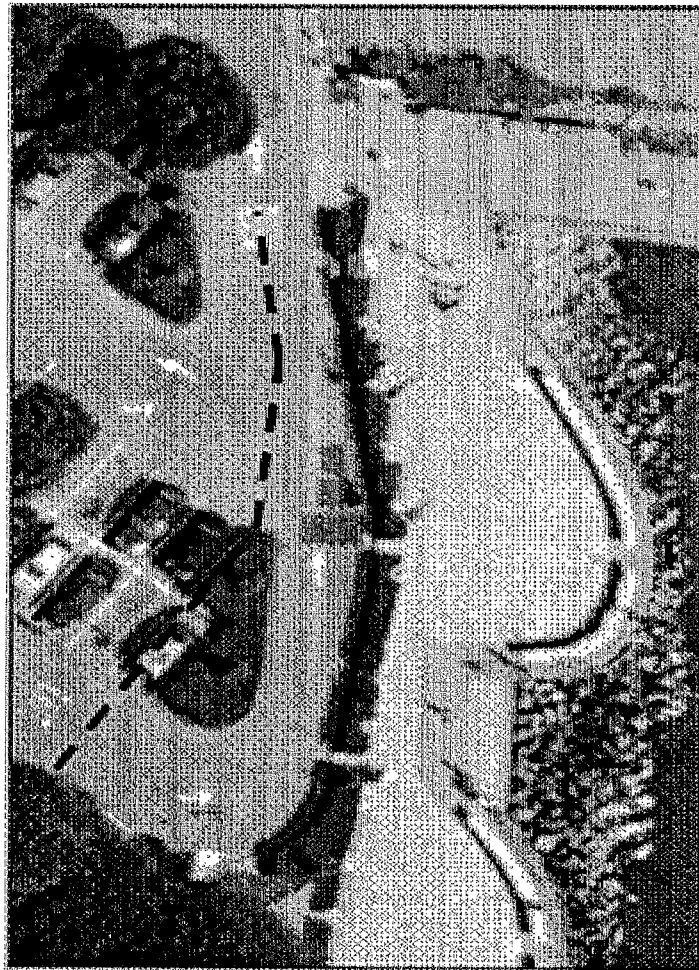
City Attorney, Mary Wagner

Jonathon Goldman, Public Works Director

Item #: 6C
Meeting Date: _____
Page #: 3

6A

Proposed Lot #1
South End Reconfiguration for the
Bicycle Rack Relocation



~~lec~~ 6A
4