



STAFF REPORT

CITY COUNCIL OF THE CITY OF SAUSALITO

AGENDA TITLE:

Review and Approval of Alten Change Order Request #13

RECOMMENDED MOTION:

Adopt a Resolution of the City Council of the City of Sausalito Approving and Authorizing the City Manager to Execute Change Order #13 for Alten Construction Inc. for Sausalito Public Safety Facilities Project New Construction Dated October 9, 2008.

SUMMARY

Alten Construction has submitted fourteen (14) Change Order Requests in the amount of \$39,443. Swinerton Management & Consulting, City Staff and Glass Architects have reviewed these Change Order Requests and recommends that the City of Sausalito approve the change to the construction contract with Alten Construction.

BACKGROUND

Alten Construction has submitted fourteen (14) Change Order Requests due to changes and conditions for both buildings. These changes have been reviewed by SMC and by Glass Architects and represent legitimate changes to the original scope. Staff will describe the requests and the costs associated with these changes.

The Change Orders are listed as follows:

Change Order Request 45 – Added Drain and Waterproofing at PD - \$2,544 – This Change Order Request are for costs associated with adding additional drainage and waterproofing at the Police Department. The original design did include drainage around the south and west perimeter, but it was thought prudent to add additional drainage capacity due to the knowledge that there is a great deal of water that comes from the hillside behind the Police Department. It was decided to add the additional drainage. City Staff, Swinerton, and Glass Architects have reviewed this COR and find the costs acceptable. Staff recommends approval of the change order request in the amount of \$2,544.

Change Order Request 77 – Added Building and Property monitoring adjacent to the Building Site - \$4,257 – This Change Order Request is for costs associated with monitoring of properties adjacent to the building site. Monitoring was a requirement of the Conditions of Approval of

Item #: GA2

Meeting Date: May 4, 2010

Page #: 1

the Planning Commission. Alten, through direction from the City, has monitored and surveyed the adjacent properties on a regular basis. Previous change order requests for previous monitoring have been submitted and approved by the City Council. There are also costs included in this change order request for re-setting some of the points from which the monitoring was conducted due to the fact that the building construction now makes use of the previous points unusable. The surveyor therefore, re-set points so that monitoring could continue. City Staff, Swinerton, and Glass Architects have reviewed this COR and find the costs acceptable. Staff recommends approval of the change order request in the amount of \$4,257.

Change Order Request 87.1 – Added Venting Police Department Evidence Room - \$10,408 –

This change order request is for costs associated with adding venting ductwork for an evidence dryer in the Police Department Evidence Room and for enlarging existing ductwork from 8” to 10” ducts to accommodate a greater required load of exhausting for the Police Evidence Room. The current design contained one fume hood in the evidence room, but the Police Department wished to add an evidence dryer unit which requires its own dedicated exhaust. This ductwork would need to travel from the fume hood, and travel upwards and penetrate the roof. The costs included in this change order request are for ductwork, roofing and associated work. Originally, Alten submitted a cost of \$12,608, but after negotiation, Alten agreed to change the price to \$10,408. City Staff, Swinerton, and Glass Architects have reviewed this COR and find the costs acceptable. Staff recommends approval of the change order request in the amount of \$10,408.

Change Order Request 92 – Added Timer Switch - \$668 – This change order request is for costs associated with adding a timer switch for the Police Department Staff Restrooms and Lockers exhaust system. This will allow the exhaust of those rooms to be controlled as needed. City Staff, Swinerton, and Glass Architects have reviewed this COR and find the costs acceptable. Staff recommends approval of the change order request in the amount of \$668.

Change Order Request 94 – Solenoid for Gas Shutoff for Range and BBQ for Fire Department - \$2,072 – This Change Order Request is for the installation of a gas shut-off solenoid for both the Gas Range and Gas BBQ for the Fire Department. In the event of an emergency call to the Fire Department, this solenoid will automatically turn off the gas supply for the range and the BBQ to prevent the units to continue working if the Firefighters are called away on an emergency. This will ensure that there is not the risk of leaving a burner on while out of the Station, which could in turn cause a fire. Upon returning to the Station, the Fire Department would be able to re-activate the gas flow by means of a switch. City Staff, Swinerton, and Glass Architects have reviewed this COR and find the costs acceptable. Staff recommends approval of the change order request in the amount of \$2,072.

Change Order Request 95 – Added Electrical for Fume hood - \$1,343 – This change order request is for costs associated with adding a weather rated motor switch for two vent hoods located at the Police Department. The installation of the switch is not included in the mechanical sub-contractors scope but needed to be added to the electrician’s scope of work.

Item #: 6A2

Meeting Date: May 4, 2010

Page #: 2

City Staff, Swinerton, and Glass Architects have reviewed this COR and find the costs acceptable. Staff recommends approval of the change order request in the amount of \$1,343.

Change Order Request 96 – Changes to Doors M004 and P209 - \$1,016 – This change Order request is for costs associated with the modification of two doors. The mezzanine doors at the Fire Department changed due to the moving of the firepole and as a result, the doors were modified. At the Police Department, the doors were changed to create a smaller storage closet and an alcove that is to receive Police Equipment in that location. Both of the changes were directions given to the architect after the plans had been bid, therefore this is a change. City Staff, Swinerton, and Glass Architects have reviewed this COR and find the costs acceptable. Staff recommends approval of the change order request in the amount of \$1,016.

Change Order Request 97 – Added Steel at Stairwell - \$2,693 – This change order request is for costs associated with adding a piece of angle steel at the rear stairway of the Fire Department to allow a short wall to bear upon it and widen a landing area of the stairway. The wider landing of the stairway was desired as the second stairway of the Fire Department will accept deliveries and will be used to transport items from the ground floor to the mezzanine storage area. City Staff, Swinerton, and Glass Architects have reviewed this COR and find the costs acceptable. Staff recommends approval of the change order request in the amount of \$2,693.

Change Order Request 98 – Credit for deleted casework and re-frame vestibule – (-343) – This credit change order request is for the modification of a vestibule outside of the Sally Port of the Police Department. The vestibule was going to receive casework shelving units, but the Police Department requested that the built in units would be deleted so that different storage units could be installed. The Police Department will either re-use existing equipment lockers or purchase new ones at a future date. The credit change order request includes the deletion of the casework and the re-framing of the area. City Staff, Swinerton, and Glass Architects have reviewed this COR and find the costs acceptable. Staff recommends approval of the change order request in the amount of (\$343)

Change Order Request 99 – Added Sheetrock for Fire Rating - \$1,281 – This change order request is for costs associated with adding an additional layer of sheetrock to the underside of the ceiling below the stairs of the Fire Department to maintain the proper fire rating. This came as a result of the moving of the firepole. Since the firepole was moved, the vacated space allowed the architect to add an additional storage room for the Fire Department. This room is partially located under the rear stairwell of the Fire Department. As a result of adding this new storage room, additional fire rating was required. City Staff, Swinerton, and Glass Architects have reviewed this COR and find the costs acceptable. Staff recommends approval of the change order request in the amount of \$1,281.

Change Order Request 104 – Conduit Chase for Police Department - \$9,161 – This change order request is for costs associated with providing a conduit chase between the first and second floors of the Police Department for the large numbers of conduits in the building. The

Item #: LOA2

Meeting Date: May 4, 2010

Page #: 3

work includes cutting an opening in the concrete and steel deck, adding support steel around the opening to support the deck, adding fire coating to the steel to retain the proper fire rating and minor changes to sheetrock and framing. City Staff, Swinerton, and Glass Architects have reviewed this COR and find the costs acceptable. Staff recommends approval of the change order request in the amount of \$9,161.

Change Order Request 106 – Changes to Police Department Breakroom - \$2,506 – The change order request is for costs associated with changes made to the Police Department breakroom including the electrical wiring rough-in for appliances and a hood. It also includes a change to the Lobby Restroom hardware to allow the restroom door to only be opened by a buzzer behind the administration desk. City Staff, Swinerton, and Glass Architects have reviewed this COR and find the costs acceptable. Staff recommends approval of the change order request in the amount of \$2,506.

Change Order Request 108 – Changes to Police Department Breakroom - \$785 – This change order request is for costs associated with moving the water supply for the Police Department breakroom coffee maker. As a result of the changes to the casework and counter of the breakroom, the location of the water supply was no longer in a proper spot and had to be relocated elsewhere. The costs in this change order request are for moving the water supply and sheetrock patching. City Staff, Swinerton, and Glass Architects have reviewed this COR and find the costs acceptable. Staff recommends approval of the change order request in the amount of \$785.

Change Order Request 109 – Electrical and drywall changes for hose dryer - \$1,052 – This change order request is for costs associated with removing some installed drywall, relocating electrical conduits and a sprinkler line to accommodate the installation of ductwork from the hose dryer unit of the Fire Department up through the mezzanine. These costs are only for the sheetrock, electrical and plumbing work, as the ductwork was not a part of this change order request. City Staff, Swinerton, and Glass Architects have reviewed this COR and find the costs acceptable. Staff recommends approval of the change order request in the amount of \$1,052.

ISSUES

No issues have been identified with the contemplated action.

FISCAL IMPACT

Approval of Alten's Change Order No. 13 will result in a deduction of \$39,443 from the hard cost construction contingency encumbrance of the General Obligation Bond Funds for this Project. Taking the proposed change orders into account, the amount of funds remaining in the Hard Cost Contingency is \$105,112.

STAFF RECOMMENDATIONS

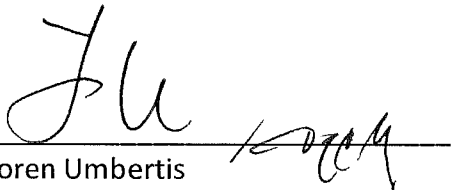
Staff, Swinerton Management & Consulting and Glass Architects recommend that the City Council Approve and Authorize the City Manager to execute Change Order No. 13 to the Contract with Alten Construction Inc. for Construction of the Public Safety Facilities Project in the amount of \$39,443.

ATTACHMENTS

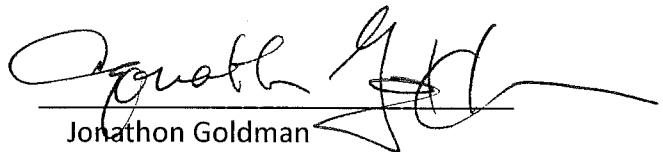
Resolution No. ___ of the City Council of the City of Sausalito Approving and Authorizing the City Manager to Execute Change Order No. 13 to the Contract with Alten Construction Inc. for Construction of the Sausalito Public Safety Facilities Project New Construction Dated October 9, 2008

PREPARED BY:

REVIEWED BY:

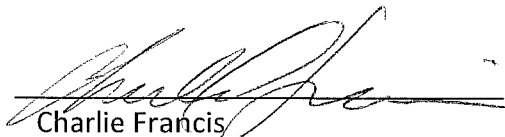


Loren Umbertis
Swinerton Management & Consulting



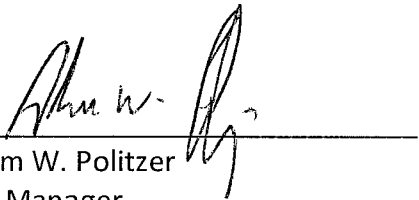
Jonathon Goldman
Director of Public Works

REVIEWED BY:



Charlie Francis
Administrative Services Director/Treasurer

SUBMITTED BY:



Adam W. Politzer
City Manager

RESOLUTION No. ____

**A RESOLUTION OF THE CITY COUNCIL OF THE CITY OF SAUSALITO
APPROVING AND AUTHORIZING THE CITY MANAGER TO EXECUTE
CHANGE ORDER NO. 13 TO THE CONTRACT WITH
ALTEN CONSTRUCTION INC. FOR
SAUSALITO PUBLIC SAFETY FACILITIES PROJECT
NEW CONSTRUCTION DATED OCTOBER 9, 2008**

WHEREAS, by Minute Order adopted on the 23rd day of September, 2008 the City Council of the City of Sausalito awarded Alten Construction, Inc. of Richmond, California (“Alten”) a contract for BID NUMBER F-141, THE SAUSALITO PUBLIC SAFETY FACILITIES PROJECT NEW CONSTRUCTION (the “Project”); and

WHEREAS, the Contract with Alten for the Project was fully executed the 9th day of October, 2008 and Notice to Proceed was issued; and

WHEREAS, during the course of recent phases of construction of the Project, situations have been encountered that were either not clearly outlined, or were entirely unforeseen, and Alten has diligently performed additional work as authorized by the City under the terms of its Contract and the City Council of the City of Sausalito has approved requisite change orders for said work with: Resolution 5001 of February 10, 2009; Resolution 5035 of June 9, 2009; Resolution 5053 of July 21, 2009; Resolution 5062 of September 1, 2009; Resolution 5071 of October 6, 2009; Resolution 5082 of November 10, 2009; Resolution 5097 of December 8, 2009; Resolution 5105 of January 26, 2010; Resolution 5112 of February 23, 2010; Resolution 5119 of March 16, 2010 (Change Order No. 11); Resolution ____ of April 6, 2010 (Change Order No. 12); and

WHEREAS, during the course of recent phases of construction of the Project, situations have been encountered that were either not clearly outlined, or were entirely unforeseen, and Alten has requested additional compensation to complete its work under the terms of its Contract; and

WHEREAS, Alten, in conformance with the Contract, has issued Change Order Requests numbered COR-45, COR-77, COR-87.1, COR-92, COR-94, COR-95, COR-96, COR-97, COR-98, COR-99, COR-104, COR-106, COR-108 and COR-109 to the City of Sausalito for review and consideration; and

WHEREAS, approval of said requests will result in a deduction of \$39,443 from the hard cost construction contingency encumbrance of the General Obligation Bond Funds for this Project leaving funds remaining in said encumbrance for the Project of \$105,112; and

WHEREAS, the City's Architect for the Project, Glass Architects, its Construction Manager, Swinerton Management & Consulting, and the City's Director of Public Works, have reviewed and considered said Change Order Requests and confirmed that they are justified, equitable, and otherwise in order, and recommend that the City Council approve said requests as CHANGE ORDER No. 13 to said Contract with Alten in the amount of \$39,443 (THIRTY-NINE THOUSAND FOUR-HUNDRED FORTY-THREE AND 00/100 DOLLARS).

NOW, THEREFORE, the City Council of the City of Sausalito does hereby resolve as follows:

1. The City Manager is authorized to execute Change Order No. 13 to said Contract with Alten in the amount of \$39,443 (THIRTY-NINE THOUSAND FOUR-HUNDRED FORTY-THREE AND 00/100 DOLLARS).

PASSED AND ADOPTED at a regular meeting of the City Council of the City of Sausalito on the 4th day of May, 2010, by the following vote:

AYES: Councilmembers:
NOES: Councilmembers:
ABSTAIN: Councilmembers:
ABSENT: Councilmembers:

MAYOR OF THE CITY OF SAUSALITO

ATTEST:

CITY CLERK

S.M. Leslie Electric, Inc.

Job Work Order

Date: MARCH 2, 2010

Job Name PUBLIC SAFETY BLDGS.

Send Bill To _____

Job Location 333 JOHNSON ST.

Address _____

City SAUSALITO, CA

City _____

Phone _____

Day Work

Contract

Extra

Description of work: NEW VENT FOR HOSE DRYER

- REROUTE TWO 1" PA CONDUITS

- ELIMINATE LIGHT BOX AND RECONNECT CONDUIT

Name of employee- Hr: JEFF 4 HRS.
RAFAEL 1/2 HRS.

Total Labor \$ _____

Material list or Attach: _____

Total Material: \$ _____

Grand Total \$ _____

[Signature] VTO

I hereby acknowledge the satisfactory completion of the above described work:

Customer Signature _____

Date _____

6A2
9

720 12th St.
Richmond, CA 94801

Phone: 510-234-4200
Fax: 510-234-4402

Date: 4/18/10 1:21 PM
Project Name: Sausalito Fire & Safety
Project No. 28011
Attn: Loren Umbertis
To: Swinerton Managment & Consulting
Email:
Phone: 1-415-421-2980
FAX: 1-415-984-1292
Number of pages including this transmittal sheet: 3

The attached Change Order is transmitted via: Email

G.C. Request No. CO-109

RFI No. APR-14

Remarks:

Please find attached our change order.

Signed: _____
Andrew Nortz

GAZ
10

Change Order Request Summary

Alten Construction, Inc.

720 12th Street
 Richmond, CA 949801
 Tel: (510) 234-4200
 Fax: (510) 234-4402

G.C. Request No.: CO-109
 Directive: APR-14
 CO Package No.:
 Submitted on: 4/18/10 1:17 PM
 Approved on:

Project: Sausalito Fire & Safety
Subject: Electrical and Drywall for Hose Dryer

Project No.: 28011

Description of Scope Change:

This change order is for T&M that was done in addition to the work already covered in PCO-066 related to APR-14. This particular cost is for the electrical work and the drywall patching.

Cost Summary:

1	General Contractor's Cost Breakdown	
a.	Labor	\$0
b.	Material	\$0
c.	Tax (material)	\$0
d.	Equipment	\$0
e.	Other items	\$0
2	Subcontractors' Subtotal (see attachment)	\$948
3	Total profit and overhead	\$81
4	Bonds and Insurance at 2.2% of total	\$23
5	Change Order Request Total Cost	\$1,052

Compensable days:

Non-compensable days:

Above prices subject to cost changes if not accepted in 14 days. All amounts shown are in US Dollars. It is mutually agreed that, if job escalation is required, a loss of productivity will result and reimbursement will be due.

Notwithstanding any other provision of this change order, the following are not waived or released and all rights are reserved with respect to: (1) extensions of time in connection with the above work; and (2) items omitted from or not priced in the proposal, including items not specifically described, costs of associated delays, disruption, acceleration, impacts on other work, etc.

No work will commence on the above until written authorization has been received in our office.

Adjustment of the Contract Sum: \$1,052

ACI PM: _____ Date: _____ ACI Management: _____ Date: _____
 Architect: _____ Date: _____ IOR: _____ Date: _____
 Construction manager: _____ Date: _____

Owner's Response: Accept: _____ Reject: _____ Other: _____

Signature: _____ Title: _____ Date: _____

*GAZ
11*

Change Order Request Cost Breakdown

Alten Construction Inc.

 720 12th Street
 Richmond, CA 949801
 Tel: (510) 234-4200
 Fax: (510) 234-4402

G.C. Request No.: CO-109

Directive: APR-14

Package No.:

Project: Sausalito Fire & Safety
Project No.: 28011
Description: Electrical and Drywall for Hose Dryer

(All amounts shown are in US Dollars)

Cost Code	Description	Qty.	Price	Per	Amount
92500-GYPSUM BOARD FIRE	Added Drywall	1	415.00	1 Piece	415.00
	Added Electrical	1	533.00	1 Piece	533.00
	Profit and overhead Subcontractor (8.5%)	1	81.00	1 Piece	81.00
	Bonds and insurance (2.2%)	1	23.00	1 Piece	23.00
Tax					
Total					\$1,052

GAZ
12

**ARCHITECT'S
PROPOSAL
REQUEST**

- OWNER
- CONTRACTOR
- FIELD ()
- CONSTRUCTION MANAGER ()
- CONSULTANT ()

PROJECT:	SAUSALITO PUBLIC SAFETY BUILDINGS	PROPOSAL REQUEST No:	14
		ARCHITECT'S PROJECT No:	G0616
		DATE:	11/20/09

Owner: City of Sausalito Contractor: Alten Construction

Please submit an itemized quotation for proposed changes in the Contract Sum and/or Time to complete the proposed modifications to the Contract Documents described herein. (Refer to Specifications Section 01035, paragraph 1.03)

THIS IS NEITHER A CHANGE ORDER NOR A DIRECTION TO PROCEED WITH THE WORK DESCRIBED HEREIN.

**Reference: Fire Station – Exhaust Duct and Plumbing
Description:**

Provide the following items in support of the Equipment added to the Contract:

Fire Station - Apparatus Bay 114: Exhaust Fan Duct for the Hose Dryer. The hose dryer unit fits under the soffit area; the exhaust fan duct immediately penetrates the Mezzanine floor to travel up and out the South exterior wall. See attached partial plan SK/MF1 and SK/MF2. Center the exhaust outlet on exterior wall panel.

Fire Station - Janitor / Laundry 119: Provide cold water and hot water to the washer / extractor unit per attached partial plan SK/PF1 and SK/PF2.

Fire Station - Kitchen / Dayroom 212: Extend gas line to exterior for Grille use at Terrace; provide gas connections and DC solenoid valve for automatic gas shutoff per attached revised sheets PF2.1, PF2.2 and PF2.3. See attached Plumbing Spec and Cut Sheets.

Attachments:

- SK/MF1 and SK/MF2
- SK/PF1 and SK/PF2
- Revised Sheets PF2.1, PF2.2 and PF2.3
- Revised Plumbing Spec
- Cut Sheets of Gas Shutoff and Power Supply

6A2
13

Northern Pacific Drywall Inc.
CA Certified Small Business Enterprise
1535 Farmers Lane, #302
Santa Rosa, CA 95405
Phone (707) 577-8275
Fax (707) 577-8925
CSL#883065
SBE# 1144920 Exp 10/2011

Additional Work

Date: February 3, 2010
Job Name: Sausalito Public Safety Buildings (Fire Station)
Job #: 102464 - NPD Change #7
Job Location: Sausalito, Ca.

To: Andrew

We have furnished all materials and performed all labor necessary to complete the additional improvements for the space listed above for the total amount of (\$415.00) per APR 14

- Demo and reframe new opening in exterior south wall on Mezzanine level for duct work

Labor: 12/1/2009 - 4hrs @ \$85hr = \$340.00

Material: \$75.00

All the above work has been completed in a substantial and workman like manner according to standard practices for the sum of Four Hundred and Fifteen Dollars and Zero Cents (\$415.00).

Payment to Northern Pacific Drywall will be made as specified below:

1. Amount to be added to contract immediately upon approval.

Any alteration or deviation from the above specifications involving extra cost of material or labor will only be executed upon written orders for same, and will become an extra charge over the sum mentioned in this contract.

Respectfully,
Darrin Spann - President
Northern Pacific Drywall Inc.

By: Darrin Spann 2/3/2010

6A2
14

Sausalito Public Safety Facilities, 28011

Company Name:

S.M. Leslie Electric, Inc.

Change Order Request No: 17

Description of work: Relocate (2) 1" PA conduits & eliminate light, J-Box and reconnect conduit to make room for hood exhaust.

RFI No.:

Architect's Supplemental Instruction APR#14

Labor

Labor Classification	Hours	Rate	Total Labor Cost
Journeyman Electrician	4.5	\$95.00	\$427.50

Material

Material description	Quantity	Unit Cost	Total Material Cost
1" EMT	20'	\$0.62	\$12.40
1" S.S. couplings	4	\$2.88	\$11.52
1" one hole straps	4	\$0.60	\$2.40
1/2" EMT	10'	\$0.19	\$1.90
1/2" S.S. couplings	2	\$1.22	\$2.44
1/2" one hole straps	2	\$0.32	\$0.64
Tax 9%			\$2.82

Subtotal =	\$461.62
-------------------	-----------------

Allowable Overhead & Profit: 10%	Overhead & Profit \$46.17
----------------------------------	---------------------------

Subtotal =	\$507.79
-------------------	-----------------

Allowable Overhead & Profit: 5%	Overhead & Profit \$25.39
---------------------------------	---------------------------

Total Cost = (Subtotal + Overhead & Profit)	\$533.18
--	-----------------

Print Name: _____ **Date:** _____

Signature: _____

6A2
15



TRANSMITTAL

720 12th St.
Richmond, CA 94801

Phone: 510-234-4200
Fax: 510-234-4402

Project Name: Sausalito Fire & Safety **Date:** 4/18/10 1:09 PM
Attn: Loren Umbertis **Project No.** 28011
To: Swinerton Managment & Consulting
Email:
Phone: 1-415-421-2980
FAX: 1-415-984-1292 **Number of pages including this transmittal sheet: 3**

The attached Change Order is transmitted via: Email

G.C. Request No. CO-087
RFI No. APR-017

Remarks:

Signed: _____
Andrew Nortz

You have received this transmittal from Alten Construction. If you did not receive the total pages indicated, please call (510) 234-4200.\

6A2
17



Change Order Request Summary

Alten Construction, Inc.

720 12th Street
 Richmond, CA 949801
 Tel: (510) 234-4200
 Fax: (510) 234-4402

G.C. Request No.: CO-087
 Directive: APR-017
 CO Package No.:
 Submitted on: 4/18/10 1:03 PM
 Approved on:

Project: Sausalito Fire & Safety
Subject: Added Venting per APR-017

Project No.: 28011**Description of Scope Change:**

(REVISED) This change order is for the cost of added venting (including a roof penetration) and the demo and replacement of one 10" section of duct. The costs also include added steel reinforcing for the roof penetration and added flashing for the roof.

Cost Summary:

1	General Contractor's Cost Breakdown	
a.	Labor	\$461
b.	Material	\$0
c.	Tax (material)	\$0
d.	Equipment	\$0
e.	Other items	\$0
2	Subcontractors' Subtotal (see attachment)	\$8,898
3	Total profit and overhead	\$825
4	Bonds and Insurance at 2.2% of total	\$224
5	Change Order Request Total Cost	\$10,408

Compensable days:

Non-compensable days:

Above prices subject to cost changes if not accepted in 14 days. All amounts shown are in US Dollars. It is mutually agreed that, if job escalation is required, a loss of productivity will result and reimbursement will be due.

Notwithstanding any other provision of this change order, the following are not waived or released and all rights are reserved with respect to: (1) extensions of time in connection with the above work; and (2) items omitted from or not priced in the proposal, including items not specifically described, costs of associated delays, disruption, acceleration, impacts on other work, etc.

No work will commence on the above until written authorization has been received in our office.

Adjustment of the Contract Sum: \$10,408

ACI PM: _____ Date: _____ ACI Management: _____ Date: _____

Architect: _____ Date: _____ IOR: _____ Date: _____

Construction manager: _____ Date: _____

Owner's Response: Accept: _____ Reject: _____ Other: _____

Signature: _____ Title: _____ Date: _____

6A2
18



Change Order Request Cost Breakdown

Alten Construction Inc.
 720 12th Street
 Richmond, CA 949801
 Tel: (510) 234-4200
 Fax: (510) 234-4402

G.C. Request No.: CO-087
 Directive: APR-017
 Package No.:

Project: Sausalito Fire & Safety
Description: Added Venting per APR-017
 (All amounts shown are in US Dollars)

Project No.: 28011

Cost Code	Description	Qty.	Price	Per	Amount
61000-ROUGH CARPENTRY	Alten - Layout and Clean-up	8	57.59	1 Hour	460.72
158130-HVAC ROUGH POLICE	Added Venting	1	5,975.00	1 Piece	5,975.00
51240-STRUCT STEEL POLICE	Added Steel for Penetrations	1	2,073.00	1 Piece	2,073.00
75420-PVC ROOFING POLICE	Added Roof Flashing	1	850.00	1 Piece	850.00
	Profit and overhead Labor (15%)	1	69.00	1 Piece	69.00
	Profit and overhead Subcontractor (8.5%)	1	756.00	1 Piece	756.00
	Bonds and insurance (2.2%)	1	224.00	1 Piece	224.00
Tax					
Total					\$10,408

602
19

Phone 707-795-5232

Fax 707-795-5611



700

Change Order Request (8) (Revised 4/15/10)

To: Alten Construction
Attn: Angie Sneed
Date: April 15, 2010
Project Name: Sausalito Public Safety
Location: Sausalito CA

Scope: As per request from Architect dated 12/11/09, Lasley Mechanical proposes to vent Fume Hood in Police Station to extend through roof.

Price Breakdown:

Field Installation:

Coring of slab on roof; installation of exhaust ductwork – 55 hours @ \$85.00\$4,675.00

Field materials

Spiral ductwork; screws, sealant, miscellaneous, roof jack & top;\$1,300.00

Total\$5,975.00

***Excludes: Roofing**

Sincerely,

Lasley Mechanical

6A2
20



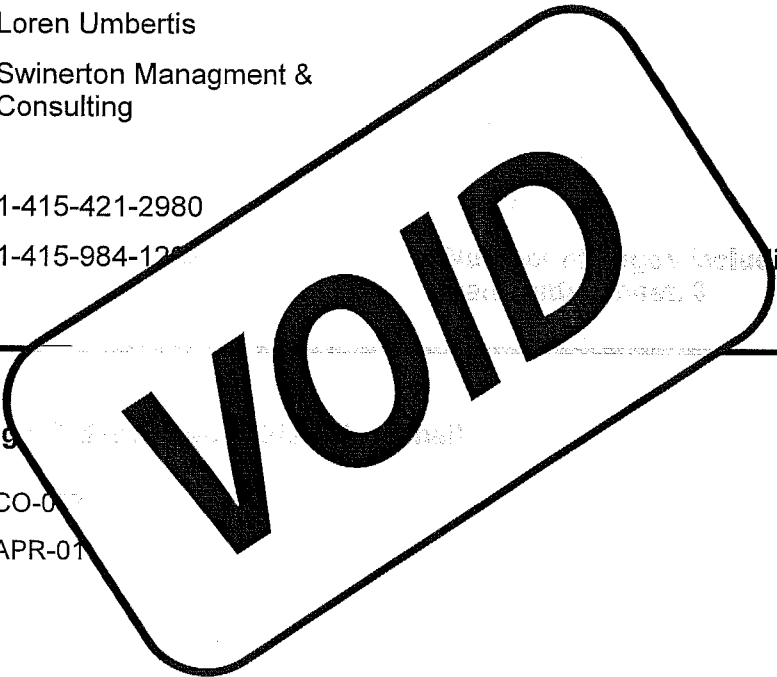
TRANSMITTAL

720 12th St.
Richmond, CA 94801

Phone: 510-234-4200
Fax: 510-234-4402

Project Name: Sausalito Fire & Safety
Attn: Loren Umbertis
To: Swinerton Management & Consulting
Email:
Phone: 1-415-421-2980
FAX: 1-415-984-1288

Date: 2/11/10 12:41 PM
Project No. 28011



The attached Change Order
G.C. Request No. CO-007
RFI No. APR-01

Remarks:

Signed: _____
Andrew Nortz

You have received this transmittal from Alten Construction. If you did not receive the total pages indicated, please call (510) 234-4200.\

6A2
21



Change Order Request Summary

Alten Construction, Inc.
720 12th Street
Richmond, CA 949801
Tel: (510) 234-4200
Fax: (510) 234-4402

G.C. Request No.: CO-087
Directive: APR-017
CO Package No.:
Submitted on: 2/11/10 12:32 PM
Approved on:

Project: Sausalito Fire & Safety
Subject: Added Venting per APR-017

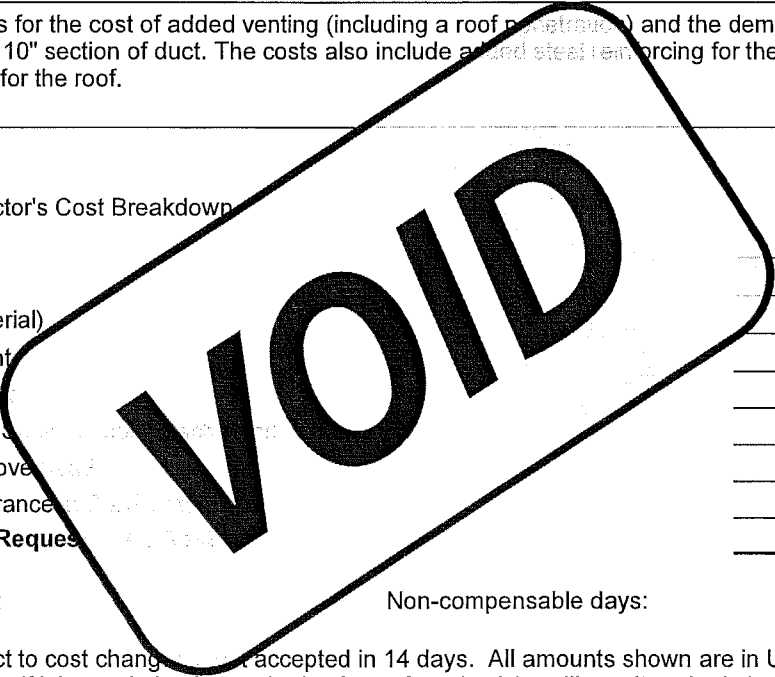
Project No.: 28011

Description of Scope Change:

This change order is for the cost of added venting (including a roof penetration) and the demo and replacement of one 10" section of duct. The costs also include added steel reinforcing for the roof penetration and added flashing for the roof.

Cost Summary:

1	General Contractor's Cost Breakdown	
a.	Labor	\$461
b.	Material	\$0
c.	Tax (material)	\$0
d.	Equipment	\$0
e.	Other items	\$0
2	Subcontractors' %	\$11,023
3	Total profit and overhead	\$1,006
4	Bonds and Insurance	\$275
5	Change Order Request	\$12,765



Compensable days: _____ Non-compensable days: _____

Above prices subject to cost change if not accepted in 14 days. All amounts shown are in US Dollars. It is mutually agreed that, if job escalation is required, a loss of productivity will result and reimbursement will be due.

Notwithstanding any other provision of this change order, the following are not waived or released and all rights are reserved with respect to: (1) extensions of time in connection with the above work; and (2) items omitted from or not priced in the proposal, including items not specifically described, costs of associated delays, disruption, acceleration, impacts on other work, etc.

No work will commence on the above until written authorization has been received in our office.

Adjustment of the Contract Sum: **\$12,765**

ACI PM: _____ Date: _____ ACI Management: _____ Date: _____

Architect: _____ Date: _____ IOR: _____ Date: _____

Construction manager: _____ Date: _____

Owner's Response: Accept: _____ Reject: _____ Other: _____

Signature: _____ Title: _____ Date: _____

6022



Change Order Request Cost Breakdown

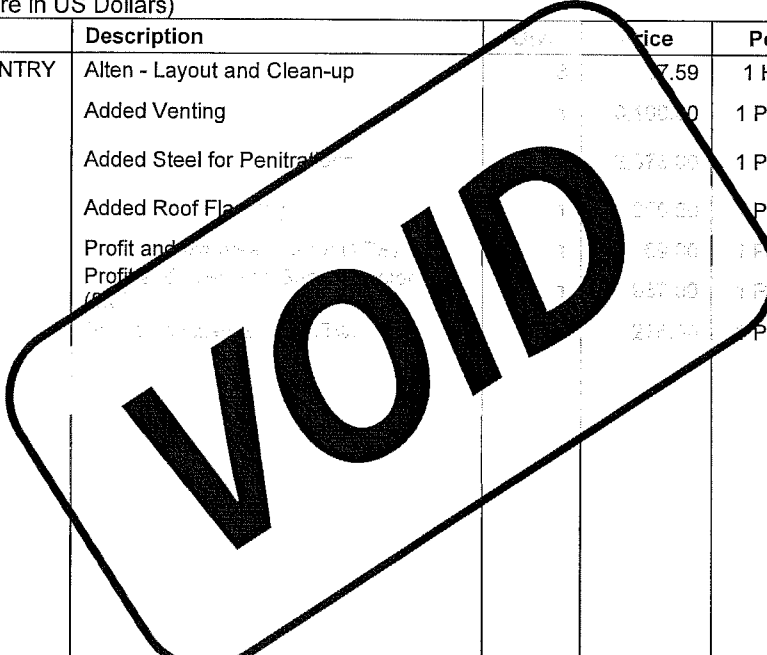
Alten Construction Inc.
 720 12th Street
 Richmond, CA 949801
 Tel: (510) 234-4200
 Fax: (510) 234-4402

G.C. Request No.: CO-087
 Directive: APR-017
 Package No.:

Project: Sausalito Fire & Safety
Description: Added Venting per APR-017
 (All amounts shown are in US Dollars)

Project No.: 28011

Cost Code	Description	Unit Price	Per	Amount
61000-ROUGH CARPENTRY	Alten - Layout and Clean-up	460.72	1 Hour	460.72
158130-HVAC ROUGH POLICE	Added Venting	8,100.00	1 Piece	8,100.00
51240-STRUCT STEEL POLICE	Added Steel for Penetration	2,073.00	1 Piece	2,073.00
75420-PVC ROOFING POLICE	Added Roof Flashing	850.00	1 Piece	850.00
	Profit and Overhead	69.00	1 Piece	69.00
	Profit and Overhead	937.00	1 Piece	937.00
	Profit and Overhead	275.00	1 Piece	275.00
Tax				
Total				\$12,765



GAZ
23

Phone 707-795-5232

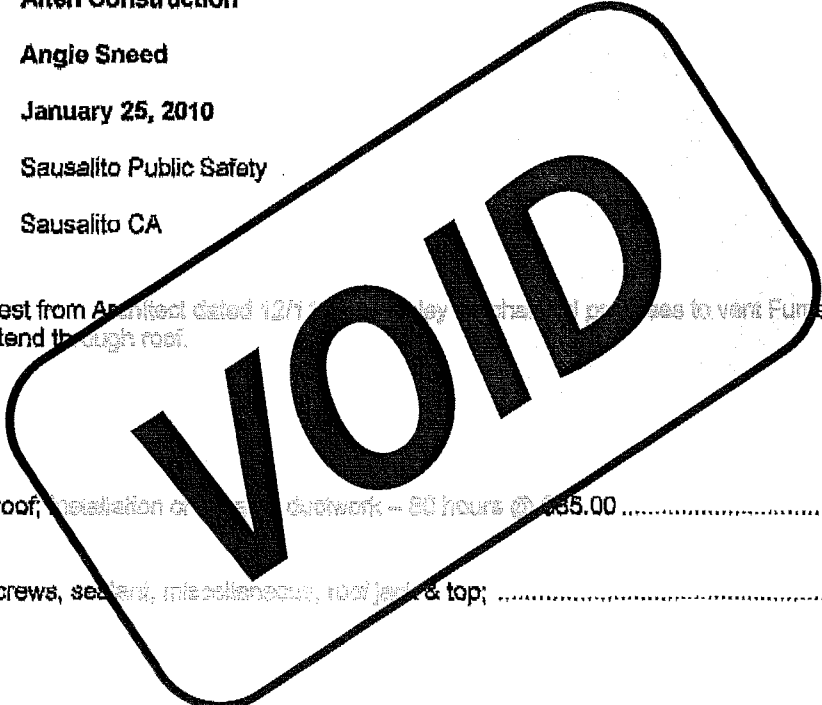
Fax 707-795-5611



Change Order Request (8)

To: Altan Construction
Attn: Angie Sneed
Date: January 25, 2010
Project Name: Sausalito Public Safety
Location: Sausalito CA

Scope: As per request from Architect dated 12/7/09 by the City of Sausalito to vary Furnace Hood in Police Station to extend through roof.



Price Breakdown:

Field Installation:

Coring of slab on roof, installation of ductwork -- 80 hours @ \$85.00 \$6,800.00

Field materials

Spiral ductwork; screws, sealant, miscellaneous, roof jacks & top; \$1,300.00

Total **\$8,100.00**

***Excludes: Roofing**

Sincerely,

Lasley Mechanical

6A2
24

Sausalito Public Safety Facilities, 28011

Company Name:

Kwan Wo Ironworks, Inc.

Change Order Request No: 22

Description of work:

Install L2-1/2x1-1/2 underneathe metal deck and L4x4 and posts.

RFI No.:

Architect's Supplemental Instruction (ASI) No.:

Labor

Labor Classification	Hours	Rate	Total Labor Cost
Site Labor	16	\$75.94/hr	\$1,215

Material

Description	Quantity	Unit Cost	Total Material Cost
steel angles, and tube steel			\$520

Equipment

Type of Equipment	Time	Rate	Total Equipment Cost
welding machine	1 day	\$60/day	\$60

Subtotal =	Sub Total	\$1,795
-------------------	------------------	----------------

Allowable Overhead & Profit: 10%	Overhead & Profit	\$ 180
---	------------------------------	---------------

Subtotal =	Sub Total	\$ 1,975
-------------------	------------------	-----------------

Allowable Overhead & Profit: 5%	Overhead & Profit	\$ 99
--	------------------------------	--------------

Total Cost = (Subtotal + Overhead & Profit)	Total Cost	\$ 2,073
--	-------------------	-----------------

Print Name: Ricky Ng

2/3/2010

Signature: _____

6A2
25



F. RODGERS[™] Corp.

INSULATION & SPECIALTY CONTRACTOR

February 4, 2010

RFI-286/APR17

To: Alten Construction
Attention: Paul Fitzgerald / Angie Sneed

Reference Project: Sausalito Public safety building

We appreciate this opportunity and propose to furnish labor, materials, equipment and insurance to complete the following scope of work based on the architectural drawings and specifications dated – 7/21/08

Bidding Spec Sections: Single Ply Roofing

Scope of Work: RFI No. 28011

Supply Labor & Material for Pipe Penetrations.

TOTAL: \$ 850.00

Qualification Notes:

- Sheet metal flashing by others.
- This proposal is based on 1 mobilization. Additional mobilizations, whether directed, caused or created by any other party, will be an additional cost to the owner.
- This proposal is based on complete access to the work areas clear of obstructions.
- Access to dumpsters, toilet facilities, potable water, and electrical power as required provided by the contractor/owner at no additional cost to F Rodgers Corp.
- Surfaces are to be clean, smooth, free of contaminates, voids, fins and debris.
- F Rodgers Corp. can only inspect the surface of the roof deck and cannot assume responsibility for the decks slope, attachment or structural integrity
- Unless otherwise specifically stated above, we assume that positive drainage is provided in the structure. No additional means of slope is provided for in this proposal.

Exclusions:

- P&P bond, overtime, liquidated damages, incidental and consequential damages, wood blocking, sheet metal flashing and trim (unless specifically noted above), repairs to completed work caused by other trades, walk pads and penetrations **not specifically shown** on the drawings as dated above.

Exclusions:

- P&P bond, overtime, liquidated damages, incidental and consequential damages, wood blocking, sheet metal flashing and trim (unless specifically noted above), repairs to completed work caused by other trades, walk pads and penetrations **not specifically shown** on the drawings as dated above.

We appreciate your interest in our company and would like the opportunity to review the scope of this proposal with you personally. If you have any questions or would like to schedule this work, please do not hesitate to call our office.

Respectfully Submitted,
F Rodgers Corp.

Jaime Arellano

6A2
26

**ARCHITECT'S
PROPOSAL
REQUEST**

- OWNER
- CONTRACTOR
- FIELD ()
- CONSTRUCTION MANAGER ()
- CONSULTANT ()

PROJECT: SAUSALITO PUBLIC SAFETY BUILDINGS

PROPOSAL REQUEST NO: 17 REVISED
ARCHITECT'S PROJECT NO: G0616
DATE: 12/30/09

Owner: City of Sausalito

Contractor: Alten Construction

Please submit an itemized quotation for proposed changes in the Contract Sum and/or Time to complete the proposed modifications to the Contract Documents described herein. (Refer to Specifications Section 01035, paragraph 1.03)

THIS IS NEITHER A CHANGE ORDER NOR A DIRECTION TO PROCEED WITH THE WORK DESCRIBED HEREIN.

Reference: Police – Evidence Dryer Duct thru Roof; Staff Lounge Hood and Duct
Description:

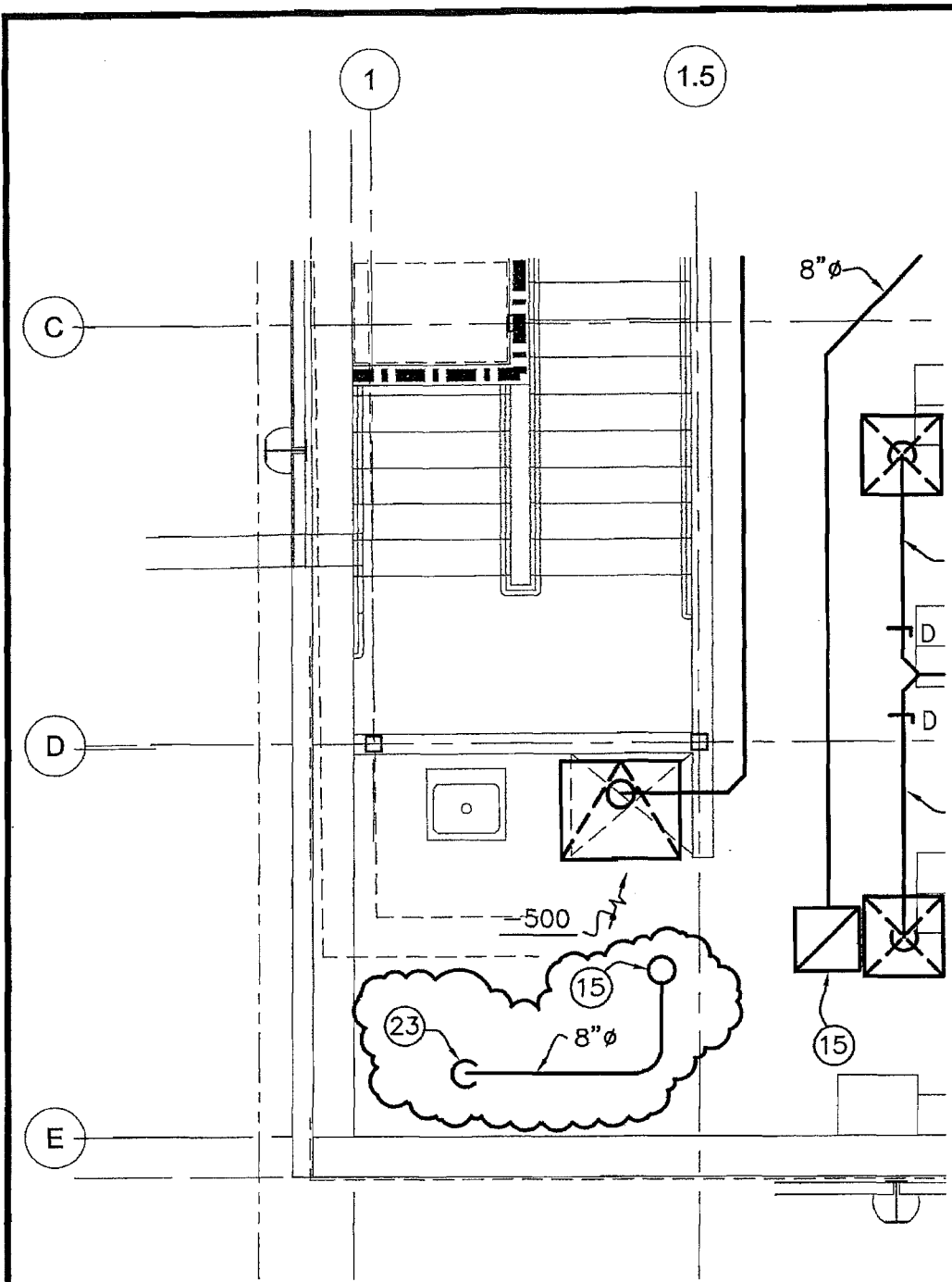
1. Police – Evidence 119: Add duct thru roof from Evidence Dryer per attached partial plan SK2.1/MP2.1.
2. Police – Staff Lounge 205: Delete the hood and duct included under Notes 12 and 13, sheet MP2.2. See attached partial plan SK2.2/MP2.2.
3. Police – Evidence 119: At EF-26, change schedule information as shown in attached SK2.4/M1.1. Reset fan speed as shown. Increase duct size to 10" diameter, and balance airflow as shown on attached SK2.3/MP2.1.

Attachments:
SK2.1 / MP2.1
SK2.2 / MP2.2
SK2.4 / M1.1
SK2.3 / MP2.1

GLASS Architects

200 E Street, Suite 100 Santa Rosa, CA 95404 TEL (707) 544-3920 · FAX (707) 544-2514
Page 1 of 1

GAZ
27



23. CONNECT DUCT TO EVIDENCE DRYING CABINET THROUGH FLEXIBLE DUCT CONNECTOR. VERIFY LOCATION PRIOR TO ROUGH IN.

GLASS
ARCHITECTS

200 E STREET
Suite 100
Santa Rosa Ca 95404
Tel: (707) 544-3920
Fax: (707) 544-2514
glass@glassarchitects.com
© Copyright 2008

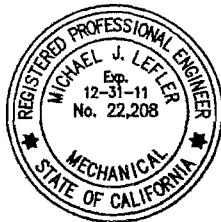
**SAUSALITO PSB
POLICE & FIRE**
Police: 29 Caledonia St, CA 94965
Fire: 333 Johnson St, CA 94965

Job No: G0616
Drawn By: JC/PW
Checked By: MJL
Cod File:
Date: 12/22/09

Sheet Title
POLICE STATION
LOWER LEVEL
MECHANICAL FLOOR PLAN

Sheet Number
SK2.1
MP21
of

Revisions	
APR	12/23/09



LEFLER ENGINEERING, INC.
1651 Second Street
San Rafael, CA 94901
(415) 456-4220
(415) 456-1248 fax

6A-
28

1.5 2



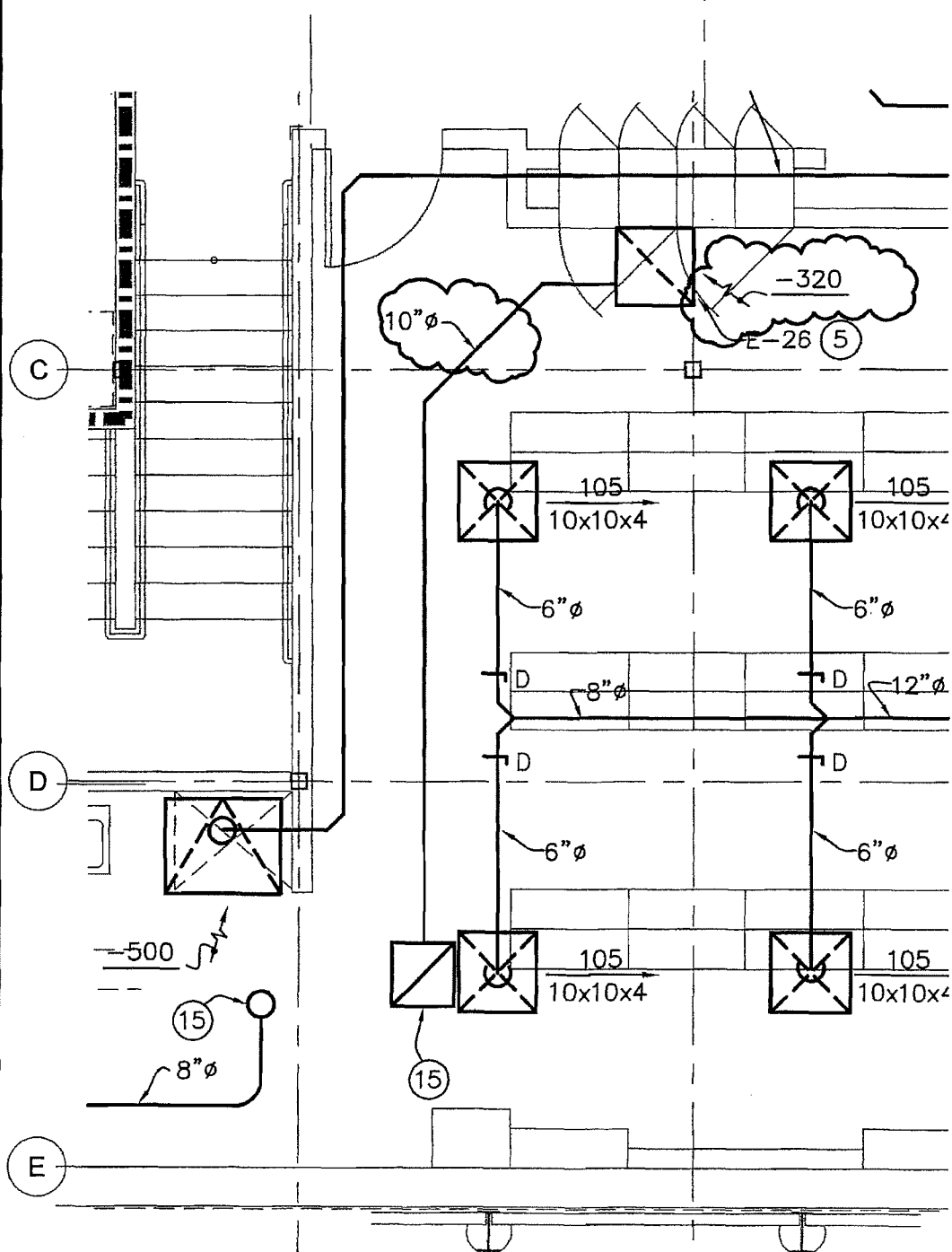
200 E STREET
 Suite 100
 Santa Rosa Ca 95404
 Tel: (707) 544-3920
 Fax: (707) 544-2514
 glass@glassarchitects.com
 © Copyright 2008

SAUSALITO PSB
 POLICE & FIRE
 Police: 29 Caledonia St, CA 94965
 Fire: 333 Johnson St, CA 94965

Job No: G0616
 Drawn By: JC/PW
 Checked By: MJL
 Cod File:
 Date: 12/30/09

Sheet Title
 POLICE STATION
 LOWER LEVEL
 MECHANICAL FLOOR PLAN

Sheet Number
 SK2.3
 MP21
 of



Revisions	
APR	12/30/09



LEFLER ENGINEERING, INC.
 1651 Second Street
 San Rafael, CA 94901
 (415) 456-4220
 (415) 456-1248 fax

6A2
 29

Fan Schedule

FAN NO.	MFOR.	MODEL NO.	CFM	S.P. (W/C)	RPM	WHEEL SIZE	BHP	MAX. SONES	MOTOR			WEIGHT (LBS.)	SERVICE	REMARKS	
									H.P.	VOLTAGE	PHASE				WATTS
E-1	COOK	GC-180	-100	0.25	807	7.63	-	1.8	-	115	1	22	25	TOILET 110	SPEED CONTROL SWITCH
E-2	COOK	GC-180	-125	0.25	891	7.63	-	2.3	-	115	1	31	25	TOILET 103	SPEED CONTROL SWITCH
E-3	COOK	GN-180	-100	0.375	1123	7.00	-	1.5	-	115	1	36	25	ELEV. EQUIP 126	SPEED CONTROL SWITCH
E-4	COOK	GN-180	-125	0.375	1035	7.63	-	1.2	-	115	1	46	25	COPY 122	SPEED CONTROL SWITCH
E-5	COOK	GN-340	-175	0.375	1546	5.25	-	2.0	-	115	1	100	35	ARMORY 114	SPEED CONTROL SWITCH
E-22	COOK	GC-180	-125	0.25	891	7.63	-	2.3	-	115	1	31	25	RESTROOM 214	SPEED CONTROL SWITCH
E-23	COOK	GC-180	-125	0.25	891	7.63	-	2.3	-	115	1	31	25	RESTROOM 211	SPEED CONTROL SWITCH
E-24	COOK	GN-520	-250	0.375	990	6.31	-	1.3	-	115	1	69	40	COPY 206	SPEED CONTROL SWITCH
E-25	COOK	GN-820	-650	0.375	564	8.50	-	2.1	-	115	1	325	40	EXERCISE 215	SPEED CONTROL SWITCH
E-26	COOK	GC-520	-320	0.375	1205	6.31	-	5.1	-	115	1	136	40	EVIDENCE 119	SPEED CONTROL SWITCH

Revisions
APR 12/30/09



LEFLER ENGINEERING, INC.
1651 Second Street
San Rafael, CA 94901
(415) 456-4220
(415) 456-1248 fax



200 E STREET
Suite 100
Santa Rosa Ca 95404
Tel: (707) 544-9820
Fax: (707) 544-2814
glass@glassarchitects.com
© Copyright 2008

**SAUSALITO PSB
POLICE & FIRE**
Police: 29 Caledonia St, CA 94965
Fire: 333 Johnson St, CA 94965

Job No: G0616
Drawn By: JC/PW
Checked By: MJL
Cad File
Date: 12/30/09

Sheet Title
MECHANICAL SCHEDULE

Sheet Number
SK2.4
M1.1
of

6A
00



TRANSMITTAL

720 12th St.
Richmond, CA 94801

Phone: 510-234-4200
Fax: 510-234-4402

Project Name: Sausalito Fire & Safety **Date:** 4/18/10 12:55 PM
Attn: Loren Umbertis **Project No.** 28011
To: Swinerton Managment & Consulting
Email:
Phone: 1-415-421-2980
FAX: 1-415-984-1292 **Number of pages including this transmittal sheet: 3**

The attached Change Order is transmitted via: Email

G.C. Request No. CO-108
RFI No. APR-20a

Remarks:

Please find attached our change order.

Signed: _____
Andrew Nortz

You have received this transmittal from Alten Construction. If you did not receive the total pages indicated, please call (510) 234-4200.\

GA2
31



Change Order Request Summary

Alten Construction, Inc.
720 12th Street
Richmond, CA 949801
Tel: (510) 234-4200
Fax: (510) 234-4402

G.C. Request No.: CO-108
Directive: APR-20a
CO Package No.:
Submitted on: 4/18/10 12:50 PM
Approved on:

Project: Sausalito Fire & Safety
Subject: Move Water for Coffee Maker

Project No.: 28011

Description of Scope Change:

This change order is for the cost of moving the water outlet for the coffee maker in the Police Kitchen as directed via e-mail in relation to APR-20a.

Cost Summary:

1	General Contractor's Cost Breakdown	
a.	Labor	\$0
b.	Material	\$0
c.	Tax (material)	\$0
d.	Equipment	\$0
e.	Other items	\$0
2	Subcontractors' Subtotal (see attachment)	\$708
3	Total profit and overhead	\$60
4	Bonds and Insurance at 2.2% of total	\$17
5	Change Order Request Total Cost	\$785

Compensable days:

Non-compensable days:

Above prices subject to cost changes if not accepted in 14 days. All amounts shown are in US Dollars. It is mutually agreed that, if job escalation is required, a loss of productivity will result and reimbursement will be due.

Notwithstanding any other provision of this change order, the following are not waived or released and all rights are reserved with respect to: (1) extensions of time in connection with the above work; and (2) items omitted from or not priced in the proposal, including items not specifically described, costs of associated delays, disruption, acceleration, impacts on other work, etc.

No work will commence on the above until written authorization has been received in our office.

Adjustment of the Contract Sum: **\$785**

ACI PM: _____ Date: _____ ACI Management: _____ Date: _____

Architect: _____ Date: _____ IOR: _____ Date: _____

Construction manager: _____ Date: _____

Owner's Response: Accept: _____ Reject: _____ Other: _____

Signature: _____ Title: _____ Date: _____

6A2
32



Change Order Request Cost Breakdown

Alten Construction Inc.
 720 12th Street
 Richmond, CA 949801
 Tel: (510) 234-4200
 Fax: (510) 234-4402

G.C. Request No.: CO-108
 Directive: APR-20a
 Package No.:

Project: Sausalito Fire & Safety

Project No.: 28011

Description: Move Water for Coffee Maker

(All amounts shown are in US Dollars)

Cost Code	Description	Qty.	Price	Per	Amount
154140-PLUMBING ROUGH POL	Move Water for Coffee Maker	1	708.00	1 Piece	708.00
	Profit and overhead Subcontractor (8.5%)	1	60.00	1 Piece	60.00
	Bonds and insurance (2.2%)	1	17.00	1 Piece	17.00
Tax					
Total					\$785

6A2
 33

BLACK SEA CORPORATION

Lic. # 694989

4735 MISSION STREET, SAN FRANCISCO, CA 94112
Tel. 415 333-8499, Fax. 415 333-8470, e-mail: Blackseacorp@hotmail.com

SUPPORTING DOCUMENTATION FOR THE COST PROPOSAL # 16

Subcontractor Name: Black Sea Corp:
Work Activity: PLUMBING
Project : Sausalito police and fire stations

Relocation of the water outlet at the Fire Station
Field directive

RECAP

MATERIAL	-----	
	Supplier Restocking	
	Deduct Materials	
	New Materials	\$ -
	Cartage (10 %)	
	Freight	
	Material Off Site Storage	

	Sub Total Material	\$0.00
LABOR	-----	
	Skilled Labor	\$ 461.82
	Unskilled Labor	
	Working Foreman (10 %)	
	Project Manager	
	Payroll taxes and insurance	\$ 129.12

	Subtotal Labor	\$590.94
Other Cost	-----	
	Processing	
	As Built	
	Small Tools (@ 2%)	
	Safety (@ 4 %)	
	Equipment Owned/ drill bits	

	Subtotal Other Cost	\$0.00
	SUBTOTAL COST	\$590.94
	OVERHEAD (15%)	\$88.64
	LIABULITY INSURANCE 4.2%	\$28.54
	SALES TAX (9.75%)	\$0.00
	=====	
	TOTAL	\$708.12
	TOTAL PRICE FOR CHANGE	\$708

692
34

SUPPORTING DOCUMENTATION FOR THE COST PROPOSAL # 16

Plumbing	Appren	Date / Material	Size	Qty	Unit	Unit Cost	Extended
Labor	Labor						Cost
ADD	ADD						
3.0	3.0	Relocation of the water outlet	1	1	EA		\$ -

3.0 3.0

NEW MATERIAL

\$ -

LABOR RECAP		Hr/Rate	Total /Hrs	Extended	Extended
				Direct	Taxes/Insu
				Cost	Cost
Plumbers	Direct Cost	51.00	3.00	\$ 153.00	
	Fringe Benefits	34.50	3.00	\$ 103.50	
	Taxes & Insurance	24.78	3.00		\$ 74.34
Apprent.	Direct Cost	36.00	3.00	\$ 108.00	
	Fringe Benefits	32.44	3.00	\$ 97.32	
	Taxes & Insurance	18.26	3.00		\$ 54.78

Skilled labor \$ 461.82

Taxes and insurance \$ 129.12

Signature:

Date: 04/13/2010

6A2
35



Change Order Request Summary

Alten Construction Inc.
720 12th Street
Richmond, CA 949801
Tel: (510) 234-4200
Fax: (510) 234-4402

G.C. Request No.: CO-106
Directive: APR-20a
Package No.:
Submitted on: 4/13/10 1:06 PM
Approved on:

Project: Sausalito Fire & Safety
Subject: Additional Changes Shown in APR-20a

Project No.: 28011

Description of Scope Change:

This change order is for the cost of the hardware changes shown in item 1 of APR-20a (install was included in PCO-100) and the electrical T&M that was directed in relation to item 4 (electrical for items 1-3 was included in PCO-100).

Cost Summary:

1	General Contractor's Cost Breakdown	
a.	Labor	\$0
b.	Material	\$0
c.	Tax (material)	\$0
d.	Equipment	\$0
e.	Other items	\$0
2	Subcontractors' Subtotal (see attachment)	\$2,260
3	Total profit and overhead	\$192
4	Bonds and Insurance at 2.2% of total	\$54
5	Change Order Request Total Cost	\$2,506

Compensable days:

Non-compensable days:

Above prices subject to cost changes if not accepted in 14 days. All amounts shown are in US Dollars. It is mutually agreed that, if job escalation is required, a loss of productivity will result and reimbursement will be due.

Notwithstanding any other provision of this change order, the following are not waived or released and all rights are reserved with respect to: (1) extensions of time in connection with the above work; and (2) items omitted from or not priced in the proposal, including items not specifically described, costs of associated delays, disruption, acceleration, impacts on other work, etc.

No work will commence on the above until written authorization has been received in our office.

Adjustment of the Contract Sum: **\$2,506**

ACI PM: _____ Date: _____ ACI Management: _____ Date: _____

Architect: _____ Date: _____ IOR: _____ Date: _____

Construction manager: _____ Date: _____

Owner's Response: Accept: _____ Reject: _____ Other: _____

Signature: _____ Title: _____ Date: _____

6A2
3e



Change Order Request Cost Breakdown

Alten Construction Inc.
 720 12th Street
 Richmond, CA 949801
 Tel: (510) 234-4200
 Fax: (510) 234-4402

G.C. Request No.: CO-106
 Directive: APR-20a
 Package No.:

Project: Sausalito Fire & Safety

Project No.: 28011

Description: Additional Changes Shown in APR-20a

(All amounts shown are in US Dollars)

Cost Code	Description	Qty.	Price	Per	Amount
160210-ELEC ROUGHIN POLICE	Electrical for Item 4	1	1,480.00	1 Piece	1,480.00
81114-DRS/FRAMES/HW POLICE	Revised Hardware	1	780.00	1 Piece	780.00
	Profit and overhead Subcontractor (8.5%)	1	192.00	1 Piece	192.00
	Bonds and insurance (2.2%)	1	54.00	1 Piece	54.00
Tax					
Total					\$2,506

6A2
37

**ARCHITECT'S
PROPOSAL
REQUEST**

- OWNER
- CONTRACTOR
- FIELD ()
- CONSTRUCTION MANAGER ()
- CONSULTANT ()

PROJECT: SAUSALITO PUBLIC SAFETY BUILDINGS

PROPOSAL REQUEST NO: 20A
ARCHITECT'S PROJECT NO: G0616
DATE: 3/12/10

Owner: City of Sausalito

Contractor: Alten Construction

Please submit an itemized quotation for proposed changes in the Contract Sum and/or Time to complete the proposed modifications to the Contract Documents described herein. (Refer to Specifications Section 01035, paragraph 1.03)

THIS IS NEITHER A CHANGE ORDER NOR A DIRECTION TO PROCEED WITH THE WORK DESCRIBED HEREIN.

Reference: Police Station – Miscellaneous Electrical / Hardware / Casework

Description:

1. Toilet Room 103, Door 103: Change door / frame / hardware to function similar to door 102, with electric lockset and remote pushbutton access by receptionist. Door 103 to be always free to pass from the inside.
2. Processing 109, North Wall: Add tel/data for computer and tel/data for electronic fingerprinting machine. Provide single box with 1" conduit to Radio Room with (2) tel and (2) data.
3. Storage Room 207, South Wall: Add tel/data next to the electrical outlet. Provide box with 1" conduit to Radio Room.
4. Staff Lounge 205, East Wall: See revised Plan / Elevation sketch.
 - Casework: Modify casework to conform to revised sketch
 - Cooktop: GE 21" Electric Radiant Cooktop, Model JP256WMWW – White.
 - Microwave: In place of microwave included in APR 11, provide GE Profile 1.5 CF Capacity Convection/Microwave Oven, Model PEB1590SMSS Stainless Steel. Include 27" Trim Kit JX1530SMSS. 120V.
 - Hood: Hood to be Vent A Hood Under Cabinet Range Hood PRH6-K, 30" wide, with blower and halogen lights, stainless steel finish. Delete APR 17 item 2 – this reverses the deletion (restores) of hood and duct per notes 12 and 13 of drawing MP2.2.
 - Electrical: Delete APR 15 item 2. This reverses the deletion (restores) of electrical work for the Kitchen hood and Kitchen range (cooktop) per notes 7 and 8 on drawing sheet EP3.2. Revise location of power outlet for the built-in microwave unit.

Attachments:

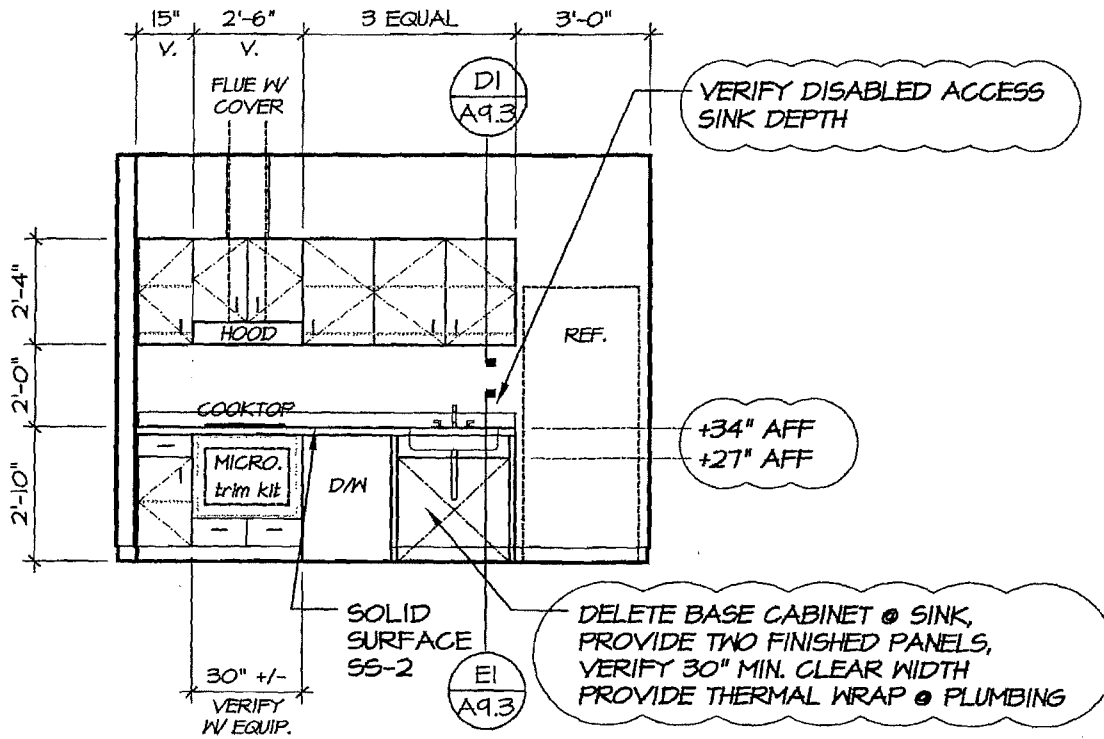
Sketch – Partial Plan and Elevation

GLASS Architects

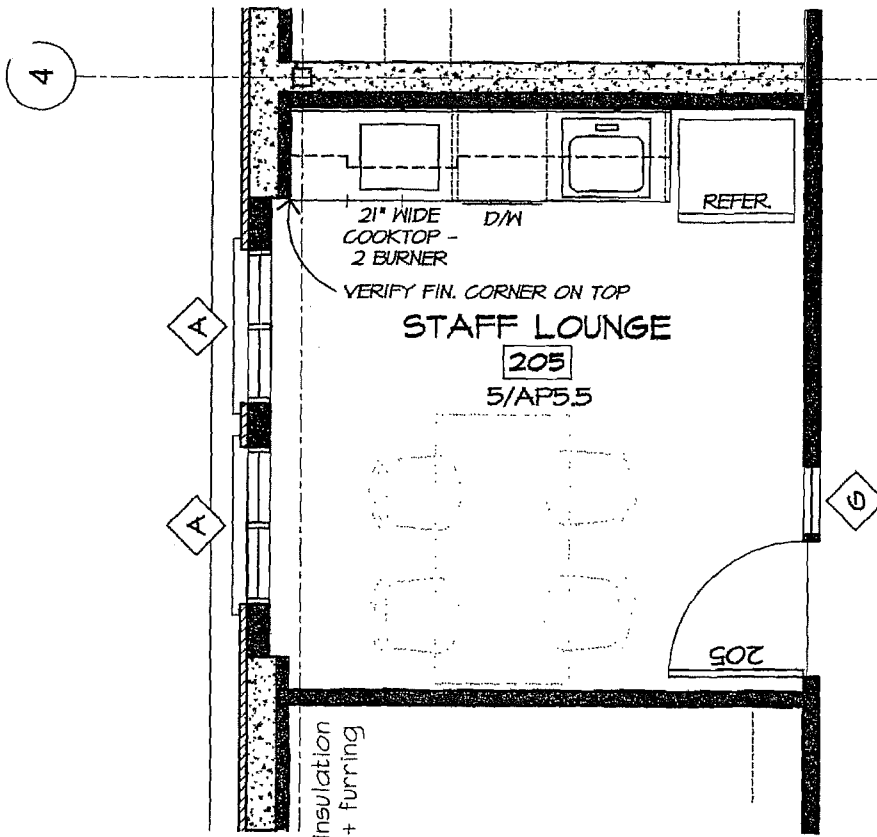
200 E Street, Suite 100 Santa Rosa, CA 95404 TEL (707) 544-3920 · FAX (707) 544-2514

Page 1 of 1

6A2
38



EAST ELEVATION 205
 SCALE: 1/4" = 1'-0"



POLICE - STAFF LOUNGE 205 - PLAN W/ COOKTOP
 SCALE: 1/4" = 1'-0"

6A2
 39

S.M. Leslie Electric, Inc.

Job Work Order - CCO#19

Date: APRIL 1, 2010

Job Name: PUBLIC SAFETY BUILDINGS

Send Bill To _____

Job Location: 29 CALEDONIA STREET

Address _____

City: SAUSALITO

City _____

Phone _____ Day Work Contract Extra

Description of work: APR # 20A - 4 ELECTRICAL

ROUGH ONLY

Name of employee- Hr: JEFF - 11-HRS. ✓
RAMON VASQUEZ 1-HR. ✓

Total Labor \$ 1140.00-

Material list or Attach: _____

Total Material: \$ 146.10-
15% 192.92
Grand Total \$ 1479.02

I hereby acknowledge the satisfactory completion of the above described work:

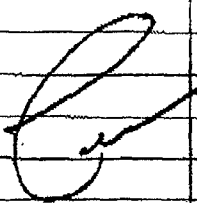
[Signature]
Customer Signature

Date

6A2
40

471664

NAME PUBLIC SAFETY BUILDINGS				SHIP TO			
ADDRESS 29 CALEDONIA STREET				ADDRESS			
CITY, STATE, ZIP SAUSALITO, CA.				CITY, STATE, ZIP			
ORDER NUMBER	DEPARTMENT	SALESPERSON	WHEN SHIP	TERMS	HOW SHIP	DATE 04/01/10	
QUANTITY	DESCRIPTION				PRICE	AMOUNT	
6 ^{ft}	3/4" STEEL FLEX				1.08	6	48
80 ^{ft}	3/4" EMT				.37	29	60
40 ^{ft}	1/2" EMT				.19	7	60
8	1/2" SET SCREW CONNECTORS STEEL				1.22	9	76
2	1/2" SET SCREW CONNECTORS STEEL				1.24	2	48
6	3/4" SET SCREW CONNECTORS STEEL				1.99	11	94
10	3/4" SET SCREW CONNECTORS STEEL				1.84	18	40
4	3/4" STRUT STRAPS				2.18	8	72
4	4 ^{sq.} DEEP BOX				7.08	28	32
1	4 ^{sq.} 1" SINGLE GANG MUD RING				2.17	2	17
1	4 ^{sq.} 1" TWO GANG MUD RING				2.22	2	22
6	1/2" ONE HOLE STRAPS				.39	2	34
4	3/4" ONE HOLE STRAPS				.45	1	80
2	3/4" FLEX CONNECTORS				1.10	2	20
						134	63
					9%	12	07
						146	10
BUYER:							



100

KEEP THIS SLIP FOR REFERENCE

6A2
41

From:
Hardware Tech Inc.
 108 Eighth Street
 Santa Rosa, CA 95401
 (707) 545-1543
 (fax) (707) 545-1569
 (email)

CHANGE ORDER

Number: **PENDING**

To:
ALTEN CONSTRUCTION INC.
 720 12TH STREET
 RICHMOND, CA 94801
 510-234-4200
 Fax: 510-234-4402
 Email:

PROJECT MGR.	DATE 04/09/2010
JOB NAME/LOCATION SAUSALITO PUBLIC SAFETY BUILDINGS POLICE AND FIRE, (TWO LOCATIONS) SAUSALITO, CA 94965	
OUR JOB# 4398	JOB PHONE 415-720-0109
EXISTING CONTRACT NO. Contract # 28011	
DATE OF EXISTING CONTRACT 10/08/2008	

We hereby agree to make the change(s) specified below:

ADD 1EA CL3355 X PZD X 626 CLASSROOM LOCKSET, 1 EA. 6211 X FS ELECTRIC STRIKE, & 1 EA. PB4-TM-9 PUSH BUTTON AT DOOR #P103 PER APR 20A

NOTE: This Change Order becomes part of and in conformance with the existing contract.

WE AGREE hereby to make the change(s) specified above at this price -> **\$780.00**

DATE	PREVIOUS CONTRACT AMOUNT	\$117,175.00
AUTHORIZED SIGNATURE (CONTRACTOR)	REVISED CONTRACT AMOUNT	\$117,955.00

ACCEPTED --

The above prices and specifications of this Change Order are satisfactory and are hereby accepted. All work to be performed under same terms and conditions as specified in original contract unless otherwise stipulated.

Date of acceptance: _____

Signature: _____
 (authorized agent)

Printed Name: _____

6A2
42



TRANSMITTAL

720 12th St.
Richmond, CA 94801

Phone: 510-234-4200
Fax: 510-234-4402

Project Name: Sausalito Fire & Safety **Date:** 4/13/10 8:55 AM
Attn: Loren Umbertis **Project No.** 28011
To: Swinerton Managment & Consulting
Email:
Phone: 1-415-421-2980
FAX: 1-415-984-1292 **Number of pages including this transmittal sheet: 3**

The attached Change Order is transmitted via: Email

G.C. Request No. CO-104
RFI No. RFI-260a

Remarks:

Please find attached our change order.

Signed: _____
Andrew Nortz

You have received this transmittal from Alten Construction. If you did not receive the total pages indicated, please call (510) 234-4200.\

6A2
43



Change Order Request Summary

Alten Construction, Inc.
720 12th Street
Richmond, CA 949801
Tel: (510) 234-4200
Fax: (510) 234-4402

G.C. Request No.: CO-104
Directive: RFI-260a
CO Package No.:
Submitted on: 4/13/10 8:54 AM
Approved on:

Project: Sausalito Fire & Safety
Subject: Conduit Chase per RFI-260A

Project No.: 28011

Description of Scope Change:

This change order is for the addition of a chase to run more than 100 conduits up to the second floor as directed by RFI-260a.

Cost Summary:

1	General Contractor's Cost Breakdown	
a.	Labor	\$1,786
b.	Material	\$200
c.	Tax (material)	\$0
d.	Equipment	\$58
e.	Other items	\$0
2	Subcontractors' Subtotal (see attachment)	\$6,095
3	Total profit and overhead	\$825
4	Bonds and Insurance at 2.2% of total	\$197
5	Change Order Request Total Cost	\$9,161

Compensable days:

Non-compensable days:

Above prices subject to cost changes if not accepted in 14 days. All amounts shown are in US Dollars. It is mutually agreed that, if job escalation is required, a loss of productivity will result and reimbursement will be due.

Notwithstanding any other provision of this change order, the following are not waived or released and all rights are reserved with respect to: (1) extensions of time in connection with the above work; and (2) items omitted from or not priced in the proposal, including items not specifically described, costs of associated delays, disruption, acceleration, impacts on other work, etc.

No work will commence on the above until written authorization has been received in our office.

Adjustment of the Contract Sum: \$9,161

ACI PM: _____ Date: _____ ACI Management: _____ Date: _____

Architect: _____ Date: _____ IOR: _____ Date: _____

Construction manager: _____ Date: _____

Owner's Response: Accept: _____ Reject: _____ Other: _____

Signature: _____ Title: _____ Date: _____

6A2
44



Change Order Request Cost Breakdown

Alten Construction Inc.
 720 12th Street
 Richmond, CA 949801
 Tel: (510) 234-4200
 Fax: (510) 234-4402

G.C. Request No.: CO-104
 Directive: RFI-260a
 Package No.:

Project: Sausalito Fire & Safety

Project No.: 28011

Description: Conduit Chase per RFI-260A

(All amounts shown are in US Dollars)

Cost Code	Description	Qty.	Price	Per	Amount
61000-ROUGH CARPENTRY	Laborer - Sawcut, Demo, Cleanup	16	57.59	1 Hour	921.44
61000-ROUGH CARPENTRY	Carpenter - Fire Caulking & Barrior	8	78.61	1 Hour	628.88
61000-ROUGH CARPENTRY	Carpenter - Added Ply	3	78.61	1 Hour	235.83
61000-ROUGH CARPENTRY	Misc. Material - Fire Rated Ply, Conc Saw Blade	1	200.00	1 Piece	200.00
61000-ROUGH CARPENTRY	Concrete Saw	1	58.00	1 Piece	58.00
92410-PLASTER POLICE	Added Fire Proofing	1	2,943.00	1 Piece	2,943.00
51240-STRUCT STEEL POLICE	Added Structural Steel	1	3,152.00	1 Piece	3,152.00
	Profit and overhead Labor (15%)	1	268.00	1 Piece	268.00
	Profit and overhead Material (15%)	1	30.00	1 Piece	30.00
	Profit and overhead Equipment (15%)	1	9.00	1 Piece	9.00
	Profit and overhead Subcontractor (8.5%)	1	518.00	1 Piece	518.00
	Bonds and insurance (2.2%)	1	197.00	1 Piece	197.00
Tax					
Total					\$9,161

6A2
45



REQUEST FOR INFORMATION

No. 260a

720 12th Street
Richmond, CA 94801

TITLE: Conduit Chase at Police

DATE: 2/25/2010

PROJECT: Sausalito Public Safety Facilities

PROJECT#: 28011

TO: Attn: Dave Zaro
Glass Architects
200 E Street
Santa Rosa, CA 95404
Phone: 707-544-3920 Fax: 707-544-2514

DSA#:

APP#:

REQUIRED

DATE: 3/4/2010

SUBCONTRACTOR NAME:

LESLIE

SPEC. SECTION: 16000

FORWARDED TO:

FORWARDED DATE:

CC:

REQUEST:

Reference response to RFI 260: "Consolidate the conduits into second floor openings according to structural details 5, 6, and 7 on sheet S7.1."

There are just under 100 - 1" conduits, 2-2" and 2-4". We suggest cutting one large opening as shown in the attached plan. This will reduce the additional work necessary to accommodate these lines and seems to agree with the room configuration. The install as directed by the original response to RFI-260 would require 2-12"x16" penetrations and 1- 9"X9" penetration, plus the spacing between each. Such a configuration would possibly enter the radio room space from the processing area below which would involve even more additional work due to the fire rating. Please review the attached plan showing the necessary penetration size of 18"x 40" and suggested location. We'll need structural direction as well for approval of this change. Please confirm and advise.

Requested By: Alten Construction, Inc

Date: 2/25/2010

Signed: _____

Andrew Nortz

SUGGESTION:

Cost Impact: No

Schedule Impact: No

Signature: _____

Work Impact: Unknown

REVIEW AND APPROVAL TO SUBMIT RFI BY INSPECTOR AND/OR DISTRICT:

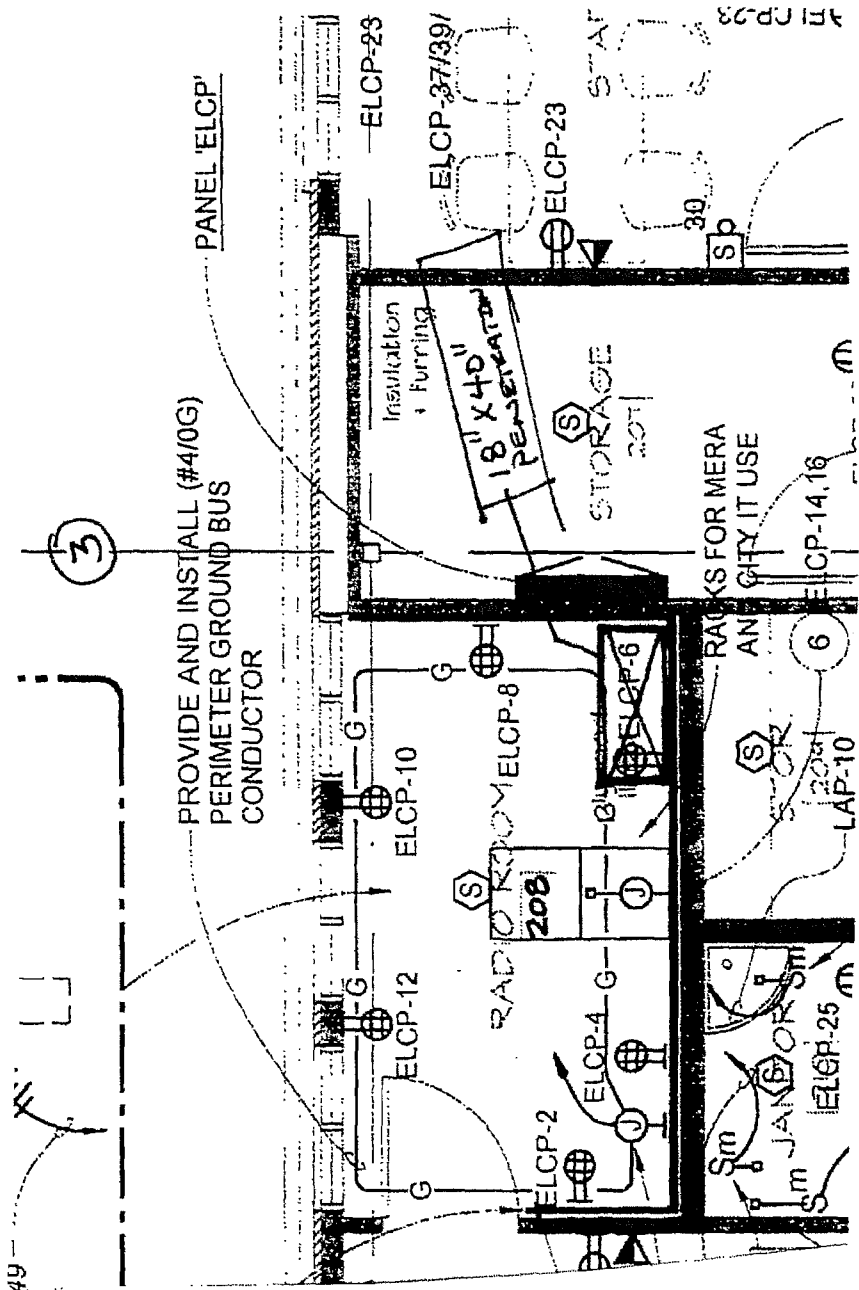
See attached pages 3 and 4 for Architectural and Structural sketches. This has been reviewed by the City of Sausalito, Netcor and our Structural Engineer. This opening avoids penetrations in the fire-rated assemblies of the I-3 Occupancy area. Keep the 18" x 40" opening as tight into the corner as possible. Opening per detail 7/S7.1. The plywood wall finish is required on all walls of the Radio Room as noted on previous e-mails. Seal the penetration at the floor level same as done on the Fire Station.

David Zaro, Glass Architects 19 Mar 2010

Signature: _____
Dave Zaro

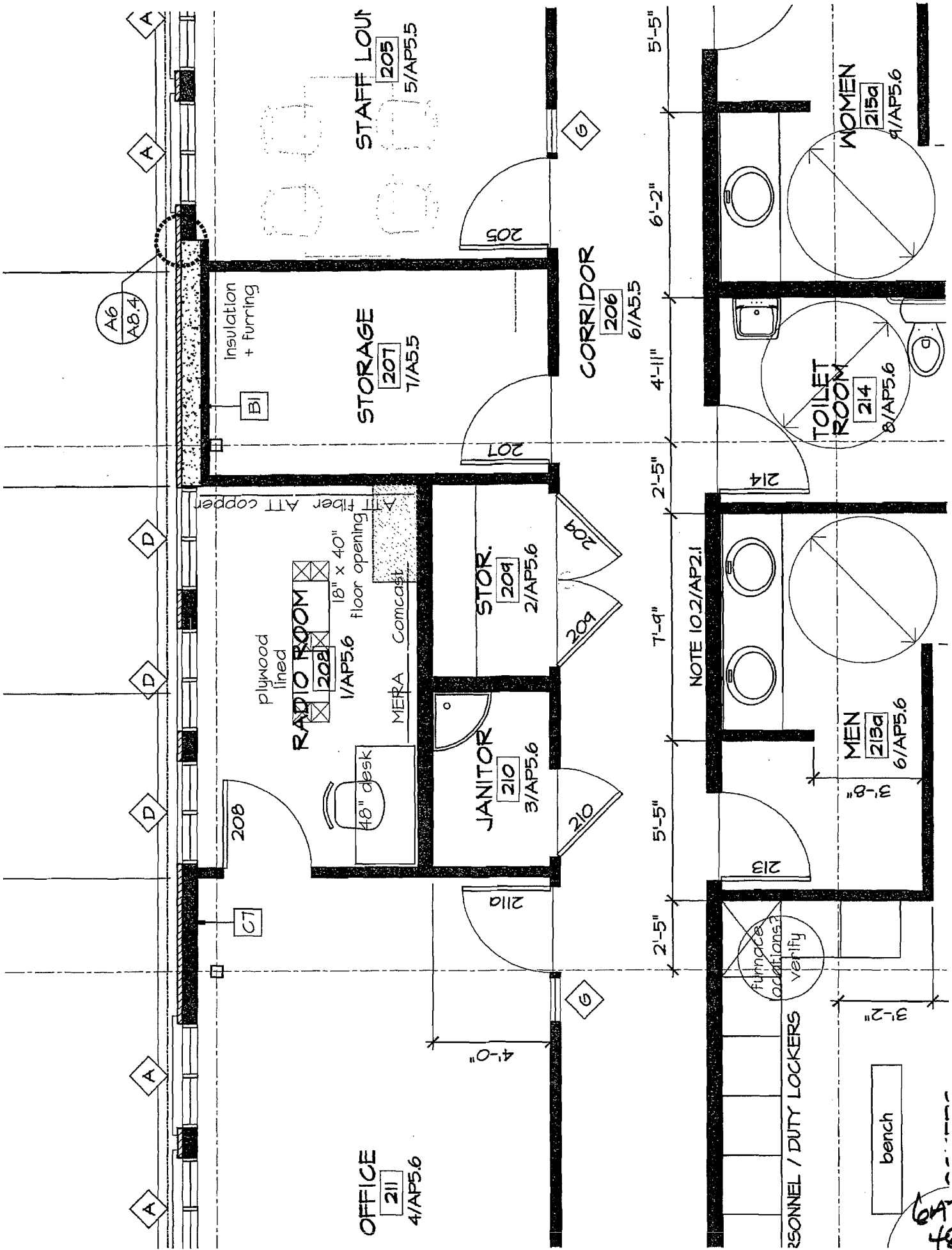
6A2
46

SPSF

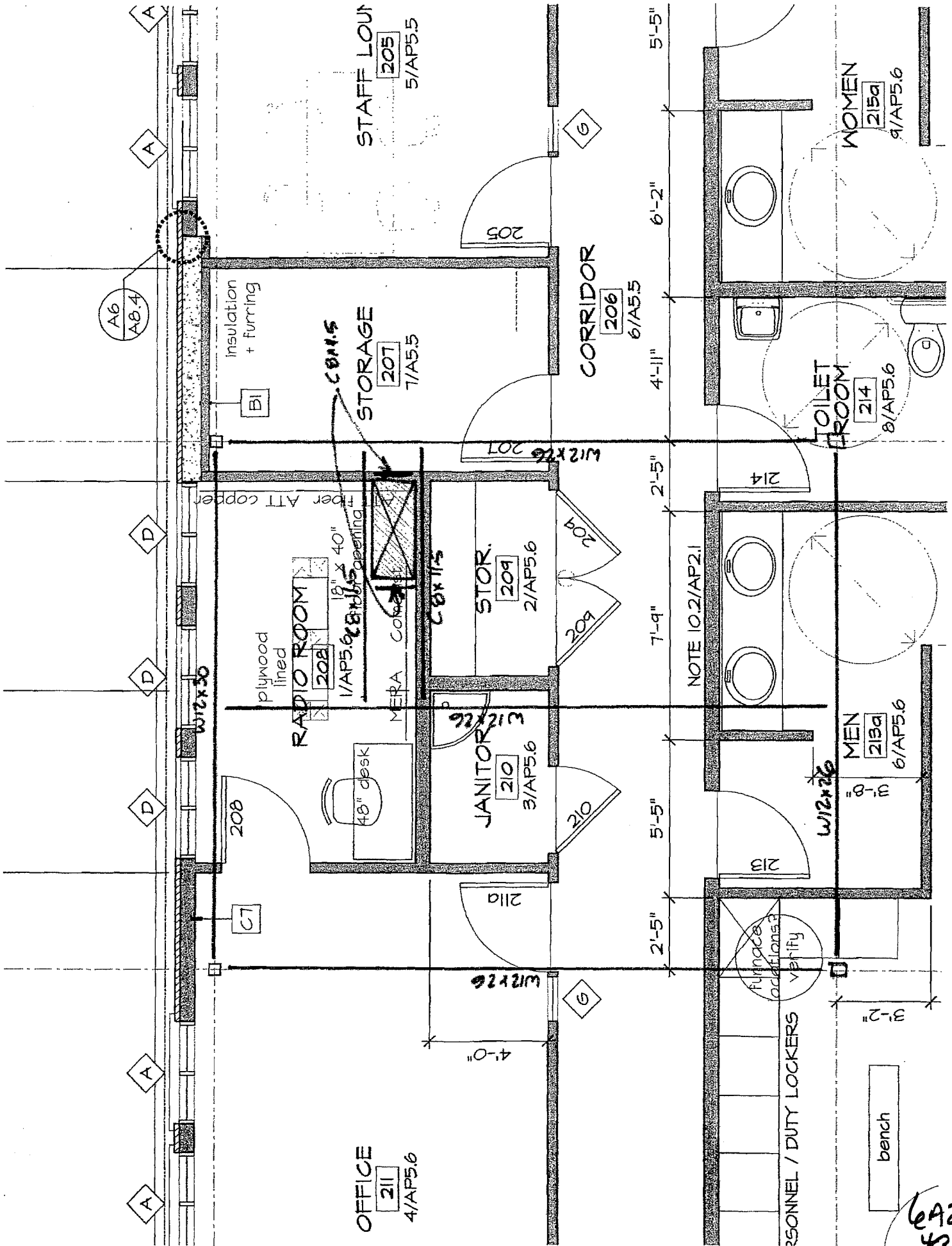


* REQUIRED CHASE LOCATION FOR APPROX. 90 1" CONDUITS + 2-2" AND 2-4" CONDUITS

6A2
5



6042
 48



OFFICE
211
4/AP5.6

RADIO ROOM
208
plywood lined
1/AP5.6
18" x 40" opening
NERA CORNERS

STORAGE
207
7/AP5.5
CORNS
insulation + furring

JANITOR
210
3/AP5.6
48" desk

STOR.
209
2/AP5.6
CORNS

STAFF LOUP
205
5/AP5.5

CORRIDOR
206
6/AP5.5

TOILET
214
8/AP5.6
MEN
215a
6/AP5.6
WOMEN
215a
9/AP5.6

PERSONNEL / DUTY LOCKERS

bench

NOTE 10.2/AP2.1

6A2
49



ROBERT BOEGER PLASTERING

Lathing • Plastering • Fire Proofing - E.I.F.S.

P.O. Box 495

Applegate, CA 95703

530-878-4726 • Fax 530-878-4732

Lic. No. 319451

3/31/10

Alten Construction

720 12th Street

Richmond, Ca 94801

Re; RFI 260

Labor

Plasterer 8 hrs @ \$47.12 + 30% burden= \$490.05

Tender 8 Hrs @ 43.53 + 30% burden= \$452.71

Supervisor 2 hrs @ 125 per= \$250.00

Materials

20 bags monokote mk-6 @ 17 per = \$340.00

1 bucket firebond primer @ 180.00 = \$180.00

3 bags monokote accelerator @ 32.00 per = \$96.00

Equipment

1 Days Truck, Mixer, & hand tools @ \$300.00= \$300.00

1 Day Monokote pump & accelerator pump @ \$450= \$450.00

Subtotal \$2,558.76

p/o \$383.81

Total \$2,942.57

6A2
SD

Sausalito Public Safety Facilities, 28011

Company Name:

Kwan Wo Ironworks, Inc.

Change Order Request No: 24

Description of work:

Install C8x11.5 at second floor opening in Police station per RFI #260a

RFI No.: 260a

Architect's Supplemental Instruction (ASI) No.:

Labor

Labor Classification	Hours	Rate	Total Labor Cost
Site Labor	24	\$75.94/hr	\$1,823
Shop Labor	8	\$62/hr	\$496

Material

Description	Quantity	Unit Cost	Total Material Cost
C8x11.5			\$350

Equipment

Type of Equipment	Time	Rate	Total Equipment Cost
welding machine	1 day	\$60/day	\$60

Sub Total

Subtotal = \$2,729

Allowable Overhead & Profit: 10% Overhead & Profit \$ 273

Sub Total

Subtotal = \$ 3,002

Allowable Overhead & Profit: 5% Overhead & Profit \$ 150

Total Cost

Total Cost = (Subtotal + Overhead & Profit) \$ 3,152

Print Name: Ricky Ng 3/22/2010

Signature: _____

602
51

SIGN-IN SHEET
FOR
Johnson Street & Utility Repairs

NAME/PROJECT TITLE

AFFILIATION

PHONE NUMBERS

NAME/PROJECT TITLE	AFFILIATION	PHONE NUMBERS

692
52

SIGN-IN SHEET
FOR
#40 MARIE STREET STORM DRAIN PROJECT

NAME/PROJECT TITLE	AFFILIATION	PHONE NUMBERS

6A2
53



TRANSMITTAL

720 12th St.
Richmond, CA 94801

Phone: 510-234-4200
Fax: 510-234-4402

Project Name:	Sausalito Fire & Safety	Date:	4/2/10 4:18 PM
Attn:	Loren Umbertis	Project No.	28011
To:	Swinerton Managment & Consulting		
Email:			
Phone:	1-415-421-2980		
FAX:	1-415-984-1292	Number of pages including this transmittal sheet:	3

The attached Change Order is transmitted via: Email

G.C. Request No. CO-099
RFI No. RFI-224a

Remarks:

Please find attached our change order.

Signed: _____
Andrew Nortz

You have received this transmittal from Alten Construction. If you did not receive the total pages indicated, please call (510) 234-4200.\

602
SS



Change Order Request Summary

Alten Construction, Inc.
720 12th Street
Richmond, CA 949801
Tel: (510) 234-4200
Fax: (510) 234-4402

G.C. Request No.: CO-099
Directive: RFI-224a
CO Package No.:
Submitted on: 4/2/10 4:12 PM
Approved on:

Project: Sausalito Fire & Safety
Subject: Added Sheetrock for Fire Rating

Project No.: 28011

Description of Scope Change:

This change order is for the added sheetrock requested by the response to RFI-224a.

Cost Summary:

1	General Contractor's Cost Breakdown	
a.	Labor	\$0
b.	Material	\$0
c.	Tax (material)	\$0
d.	Equipment	\$0
e.	Other items	\$0
2	Subcontractors' Subtotal (see attachment)	\$1,155
3	Total profit and overhead	\$98
4	Bonds and Insurance at 2.2% of total	\$28
5	Change Order Request Total Cost	\$1,281

Compensable days:

Non-compensable days:

Above prices subject to cost changes if not accepted in 14 days. All amounts shown are in US Dollars. It is mutually agreed that, if job escalation is required, a loss of productivity will result and reimbursement will be due.

Notwithstanding any other provision of this change order, the following are not waived or released and all rights are reserved with respect to: (1) extensions of time in connection with the above work; and (2) items omitted from or not priced in the proposal, including items not specifically described, costs of associated delays, disruption, acceleration, impacts on other work, etc.

No work will commence on the above until written authorization has been received in our office.

Adjustment of the Contract Sum: \$1,281

ACI PM: _____ Date: _____ ACI Management: _____ Date: _____

Architect: _____ Date: _____ IOR: _____ Date: _____

Construction manager: _____ Date: _____

Owner's Response: Accept: _____ Reject: _____ Other: _____

Signature: _____ Title: _____ Date: _____

602
56



Change Order Request Cost Breakdown

Alten Construction Inc.
 720 12th Street
 Richmond, CA 949801
 Tel: (510) 234-4200
 Fax: (510) 234-4402

G.C. Request No.: CO-099
 Directive: RFI-224a
 Package No.:

Project: Sausalito Fire & Safety
Description: Added Sheetrock for Fire Rating
 (All amounts shown are in US Dollars)

Project No.: 28011

Cost Code	Description	Qty.	Price	Per	Amount
92500-GYPSUM BOARD FIRE	Added Sheetrock for Fire Rating	1	1,155.00	1 Piece	1,155.00
	Profit and overhead Subcontractor (8.5%)	1	98.00	1 Piece	98.00
	Bonds and insurance (2.2%)	1	28.00	1 Piece	28.00
Tax					
Total					\$1,281

6A2
57

Northern Pacific Drywall Inc.
CA Certified Small Business Enterprise
1535 Farmers Lane, #302
Santa Rosa, CA 95405
Phone (707) 577-8275
Fax (707) 577-8925
CSL#883065
SBE# 1144920 Exp 10/2011

Additional Work

Date: March 30, 2010
Job Name: Sausalito Public Safety Buildings (Fire Station)
Job #: 102464 - NPD Change #12
Job Location: Sausalito, Ca.

To: Andrew

We will furnish all materials and perform all labor necessary to complete the additional improvements for the space listed above for the total amount of (\$1,155.00) per: **RFI 224 Fire Station only**

- Demo new drywall and add additional drywall and taping @ locations per RFI 224. Rehang demoed area.
- Labor - 12hrs @ \$85 = \$1020.00
- Material = \$85.00
- Stocking - \$50.00

All the above work will be completed in a substantial and workman like manner according to standard practices for the sum of One Thousand One Hundred Fifty Five Dollars and Zero Cents (\$1,155.00).

Payment to Northern Pacific Drywall will be made as specified below:

1. Amount to be added to contract immediately upon approval.

Any alteration or deviation from the above specifications involving extra cost of material or labor will only be executed upon written orders for same, and will become an extra charge over the sum mentioned in this contract.

Respectfully,
Darrin Spann - President
Northern Pacific Drywall Inc.

By: Darrin Spann 3/30/2010



REQUEST FOR INFORMATION

No. 00224a

TITLE: Questions to RFI 224 response

DATE: 3/2/2010

PROJECT: Sausalito Public Safety Facilities

PROJECT#: 28011

TO: Attn: Dave Zaro
Glass Architects
200 E Street
Santa Rosa, CA 95404
Phone: 707-544-3920 Fax: 707-544-2514

DSA#:
APP#:
REQUIRED DATE:

SUBCONTRACTOR NAME:

ACI, INC

SPEC. SECTION: 06100

FORWARDED TO:

FORWARDED DATE:

CC:

REQUEST:

The response to RFI – 224, May add work for Fire Rating of the buildings. Please advise on the follow question.

POLICE ST.

let 103...For the fire rating for under stair 1, should the wall below the stairs and landing, shared with the electrical room, be shown as a rated wall and have sheet rock installed on each side?

Room 119... For the fire rating for under stair 2, should the wall below the stairs and landing, shared with the Evidence room, be shown as a rated wall and have sheet rock installed on each side?

FIRE ST.

Room 118... For the fire rating for under stair 2, should the portion of wall below the stairs and landing, shared with the Radio Communication Room, be shown as a rated wall and have sheet rock installed on each side?

STR. 117 @ Mezzanine...If the walls, door and frame are be fire rated is the floor in this area also to be rated?

The inspection agency commented and asked about the gap and rating at the stair stringer to wall conditions. Please find attached for possible solution.

Requested By: Alten Construction, Inc

Date: _____

Signed: _____

SUGGESTION:

Glass Architects

Dave Zaro

BAZ
59



REQUEST FOR INFORMATION

No. 00224a

Cost Impact: Yes Schedule Impact: Yes Signature: _____

Work Impact: Unknown

REVIEW AND APPROVAL TO SUBMIT RFI BY INSPECTOR AND/OR DISTRICT:

By: _____ Date: _____

ANSWER:

Police - Toilet 103: Wall at line 'D' from '5' - '6' is not fire-rated; see approved drawings.

Police - Room 119: Wall at line 'D' from '1' to '1.5' is not fire-rated; see approved drawings. Wall at line '1.5' from 'B.5' - 'D' is not fire-rated; see approved drawings.

Fire - Room 118: Fire-rated wall @ North 125 should extend to line '9' (extends gypsum board about 4 feet on one side). Add double layer of gypsum board (per B1/A9.2) @ partial ceiling of 118, just at the area of stair landing above (adds 26 sf., 8'-0" x 3'-4" approximately).

Fire - Stair 117 @ Mezzanine: No. Fire rating of walls at Mezzanine follows a 'suggestion' by CCC as the Plan Review Agency and not a specific code requirement.

Stairs @ Stringers: Rated wall assemblies should be continuous above and below stringer, and should be complete independent of adjacent items. Complete construction of stringer-to-wall per D4/A9.4 and D5/A9.4.

David Zaro, Glass Architects 9 March 2010

Answered By: Glass Architects

Date: _____

Signed: _____
Dave Zaro

642
60



TRANSMITTAL

720 12th St.
Richmond, CA 94801

Phone: 510-234-4200
Fax: 510-234-4402

Project Name: Sausalito Fire & Safety **Date:** 4/2/10 4:03 PM
Attn: Loren Umbertis **Project No.** 28011
To: Swinerton Managment & Consulting
Email:
Phone: 1-415-421-2980
FAX: 1-415-984-1292 **Number of pages including this transmittal sheet: 3**

The attached Change Order is transmitted via: Email

G.C. Request No. CO-098
RFI No. ASI-11

Remarks:

Please find attached our change order.

Signed: _____
Andrew Nortz

You have received this transmittal from Alten Construction. If you did not receive the total pages indicated, please call (510) 234-4200.\

6A2
61



Change Order Request Summary

Alten Construction, Inc.
720 12th Street
Richmond, CA 949801
Tel: (510) 234-4200
Fax: (510) 234-4402

G.C. Request No.: CO-098
Directive: ASI-11
CO Package No.:
Submitted on: 4/2/10 3:56 PM
Approved on:

Project: Sausalito Fire & Safety
Subject: Deleted Casework Added Drywall

Project No.: 28011

Description of Scope Change:

This change order is for the deletion of casework and addition of framing/drywall/finishing as shown in ASI-11.

Cost Summary:

1 General Contractor's Cost Breakdown	
a. Labor	\$0
b. Material	\$0
c. Tax (material)	\$0
d. Equipment	\$0
e. Other items	\$0
2 Subcontractors' Subtotal (see attachment)	\$-310
3 Total profit and overhead	\$-26
4 Bonds and Insurance at 2.2% of total	\$-7
5 Change Order Request Total Cost	<u>\$-343</u>

Compensable days:

Non-compensable days:

Above prices subject to cost changes if not accepted in 14 days. All amounts shown are in US Dollars. It is mutually agreed that, if job escalation is required, a loss of productivity will result and reimbursement will be due.

Notwithstanding any other provision of this change order, the following are not waived or released and all rights are reserved with respect to: (1) extensions of time in connection with the above work; and (2) items omitted from or not priced in the proposal, including items not specifically described, costs of associated delays, disruption, acceleration, impacts on other work, etc.

No work will commence on the above until written authorization has been received in our office.

Adjustment of the Contract Sum: \$-343

ACI PM: _____ Date: _____ ACI Management: _____ Date: _____

Architect: _____ Date: _____ IOR: _____ Date: _____

Construction manager: _____ Date: _____

Owner's Response: Accept: _____ Reject: _____ Other: _____

Signature: _____ Title: _____ Date: _____

6A2
62



Change Order Request Cost Breakdown

Alten Construction Inc.
 720 12th Street
 Richmond, CA 949801
 Tel: (510) 234-4200
 Fax: (510) 234-4402

G.C. Request No.: CO-098
 Directive: ASI-11
 Package No.:

Project: Sausalito Fire & Safety
Description: Deleted Casework Added Drywall
 (All amounts shown are in US Dollars)

Project No.: 28011

Cost Code	Description	Qty.	Price	Per	Amount
92510-GYPSUM BOARD POLICE	Reframe Alcove Tape and finish Drywall	1	1,340.00	1 Piece	1,340.00
64024-ARCH WOODWORK POLICE	Deleted Casework	1	-1,650.00	1 Piece	-1,650.00
	Profit and overhead Subcontractor (8.5%)	1	-26.00	1 Piece	-26.00
	Bonds and insurance (2.2%)	1	-7.00	1 Piece	-7.00
Tax					
Total					\$-343

022
63

**ARCHITECT'S
SUPPLEMENTAL
INSTRUCTIONS**

- OWNER:
- CONTRACTOR:
- FIELD:
- CONSTRUCTION MANAGER ()
- CONSULTANT ()

PROJECT: **SAUSALITO PUBLIC SAFETY BUILDINGS -
POLICE AND FIRE**

INSTRUCTION NO: **11**
ARCHITECT'S PROJECT NO: **G0616**
DATE: **3/18/10**

Owner: City of Sausalito

Contractor: Alten Construction

The Work shall be carried out in accordance with the following Supplemental Instructions issued in accordance with the Contract Documents without change in the Contract Sum or Contract Time.

Reference: Police - Vestibule 108 Patrol Storage

Description:

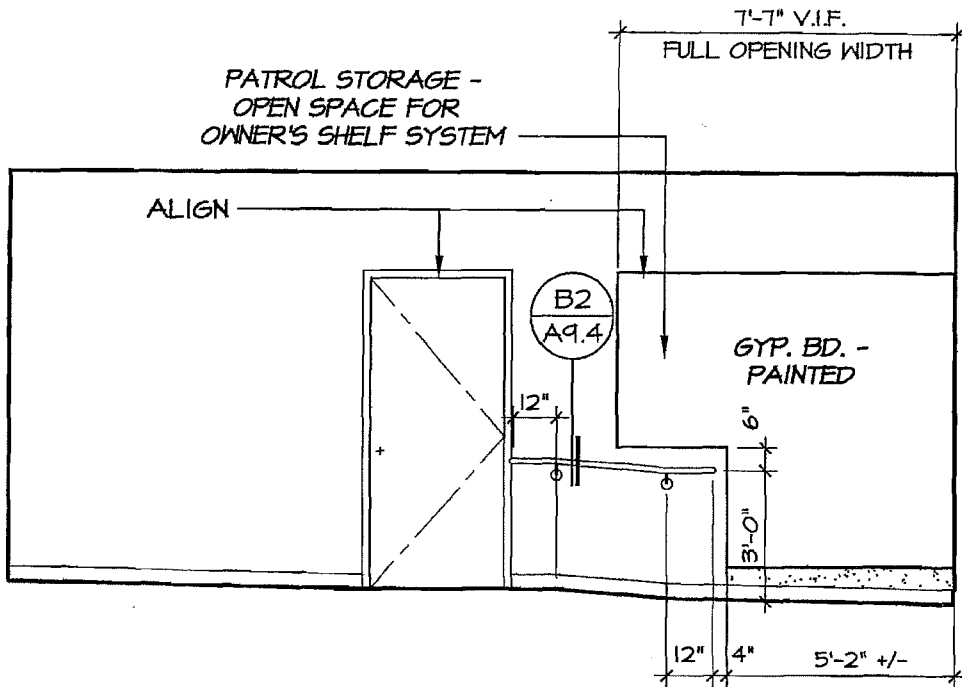
See attached CA/ASI 11 Interior Elevations.

Delete the Patrol Storage Casework in Police Vestibule 108. Reconfigure metal framing for full height opening; finish recess in painted laminated security panels same as balance of room, ready to receive Owner's shelving system.

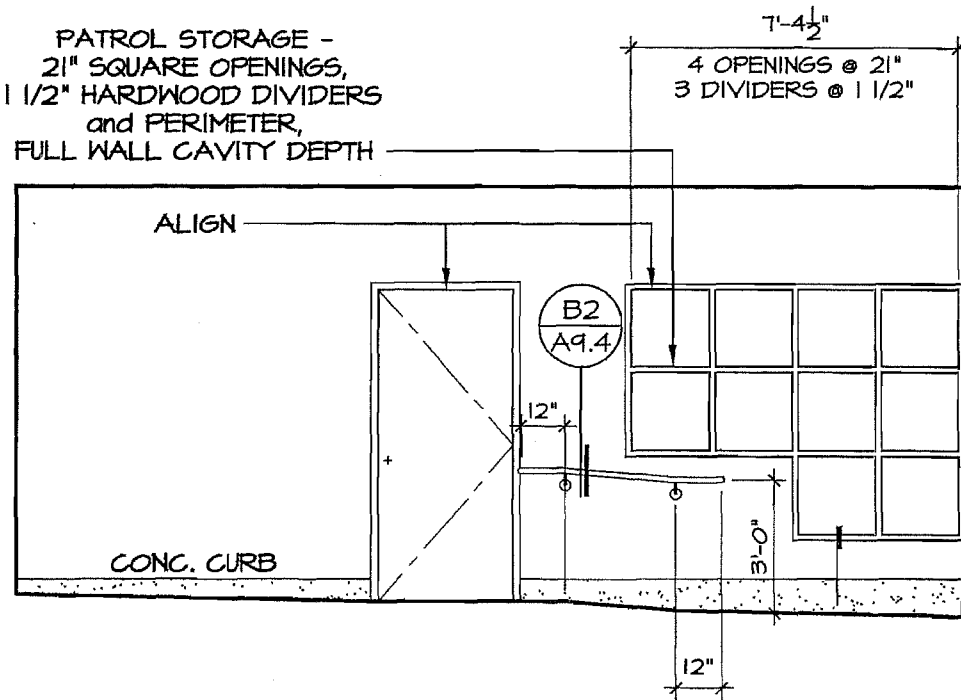
Attachments:

CA/ASI 11 Interior Elevations

6A2
64



EAST per ASI 11



EAST per Conformed Set

VESTIBULE 108

1/4" = 1'-0"

GLASS
ARCHITECTS

200 E STREET
Suite 100
Santa Rosa Ca 95404
Tel: (707) 544-3920
Fax: (707) 544-2514
glass@glassarchitects.com

© Copyright 2010

Sausalito PSB
Police and Fire

Job No: G0616
Drawn By: DZ
Checked By: --
Cad File: A52
Date: March 18 2010

Drawing = 2/AP5.2

Sheet Number

CA
ASI11

of

602
65

Northern Pacific Drywall Inc.
CA Certified Small Business Enterprise
1535 Farmers Lane, #302
Santa Rosa, CA 95405
Phone (707) 577-8275
Fax (707) 577-8925
CSL#883065
SBE# 1144920 Exp 10/2011

Additional Work

Date: March 30, 2010
Job Name: Sausalito Public Safety Buildings (ASI 11 Police Station)
Job #: 102464 – NPD Change #13
Job Location: Sausalito, Ca.

To: Andrew

We will furnish all materials and perform all labor necessary to complete the additional improvements for the space listed above for the total amount of (\$1,340.00) per: **ASI 11 Police Station**

- Demo and reframe opening for owners shelving system. Finish recess in CBR Security panels.
- Labor – 10hrs @ \$85 = \$850.00
- Material = \$415.00
- Stocking - \$75.00

All the above work will be completed in a substantial and workman like manner according to standard practices for the sum of One Thousand Three Hundred Forty Dollars and Zero Cents (\$1,340.00).
Payment to Northern Pacific Drywall will be made as specified below:

1. Amount to be added to contract immediately upon approval.

Any alteration or deviation from the above specifications involving extra cost of material or labor will only be executed upon written orders for same, and will become an extra charge over the sum mentioned in this contract.

Respectfully,
Darrin Spann - President
Northern Pacific Drywall Inc.

By: Darrin Spann 3/30/2010

GAZ
Lde

CONSTRUCTION

3/26/2010

RBH CONSTRUCTION
P.O. BOX 185
ADIN, CALIFORNIA. 96006
530-299-3366

CREDIT/INCREASE

SAUSALITO PUBLIC SAFETY FACILITIES
Asi #11
Deletion of cubby system at police vestibule

Credit Increase total

1650 -1650

TOTAL \$ (1,650.00)

SIGN AND RETURN IF ACCEPTABLE

DATE

6A2
67



Change Order Request Summary

Alten Construction Inc.
 720 12th Street
 Richmond, CA 949801
 Tel: (510) 234-4200
 Fax: (510) 234-4402

G.C. Request No.: CO-096
 Directive: RFI's 235 & 283
 Package No.:
 Submitted on: 4/2/10 2:35 PM
 Approved on:

Project: Sausalito Fire & Safety
Subject: Changes to M04 & P209 per RFI's 235 & 283

Project No.: 28011

Description of Scope Change:

This change order is for modifications to door frames directed in RFI's 235 & 283.

Cost Summary:

1	General Contractor's Cost Breakdown	
a.	Labor	\$864
b.	Material	\$0
c.	Tax (material)	\$0
d.	Equipment	\$0
e.	Other items	\$0
2	Subcontractors' Subtotal (see attachment)	\$0
3	Total profit and overhead	\$130
4	Bonds and Insurance at 2.2% of total	\$22
5	Change Order Request Total Cost	\$1,016

Compensable days:

Non-compensable days:

Above prices subject to cost changes if not accepted in 14 days. All amounts shown are in US Dollars. It is mutually agreed that, if job escalation is required, a loss of productivity will result and reimbursement will be due.

Notwithstanding any other provision of this change order, the following are not waived or released and all rights are reserved with respect to: (1) extensions of time in connection with the above work; and (2) items omitted from or not priced in the proposal, including items not specifically described, costs of associated delays, disruption, acceleration, impacts on other work, etc.

No work will commence on the above until written authorization has been received in our office.

Adjustment of the Contract Sum: \$1,016

ACI PM: _____ Date: _____ ACI Management: _____ Date: _____

Architect: _____ Date: _____ IOR: _____ Date: _____

Construction manager: _____ Date: _____

Owner's Response: Accept: _____ Reject: _____ Other: _____

Signature: _____ Title: _____ Date: _____

6A2
68



Change Order Request Cost Breakdown

Alten Construction Inc.

720 12th Street
Richmond, CA 949801
Tel: (510) 234-4200
Fax: (510) 234-4402

G.C. Request No.: CO-096
Directive: RFI's 235 & 283
Package No.:

Project: Sausalito Fire & Safety
Description: Changes to M04 & P209 per RFI's 235 & 283

Project No.: 28011

(All amounts shown are in US Dollars)

Cost Code	Description	Qty.	Price	Per	Amount
61000-ROUGH CARPENTRY	Laborer	15	57.59	1 Hour	863.85
	Profit and overhead Labor (15%)	1	130.00	1 Piece	130.00
	Bonds and insurance (2.2%)	1	22.00	1 Piece	22.00
Tax					
Total					\$1,016

692
69

DAILY ADDITIONAL WORK AUTHORIZATION



ALTEN CONSTRUCTION
 720 12th Street
 RICHMOND, CALIFORNIA 94801
 (510) 234-4200 Fax (510) 234-4402

3555

CUSTOMER NAME CITY OF SAUSALITO.		PHONE	DATE 3/19
STREET		JOB NAME 28011	JOB NUMBER 28011
CITY	STATE	COST CODE	

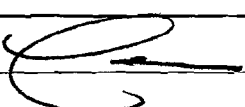
DESCRIPTION
~~RFI # 283~~ / ~~SHEET ROCK~~ / ~~INSTALL JAMBS~~,
~~+ 235.~~ / ~~DOOR JAMBS MO4~~ + ~~209 RFI.235~~
*** DEMO / FRAME / MODIFY JAMBS**

LABOR	CLASSIFICATION	EMPLOYEE NAME	TOTAL
	LAB.	J. DEANDA 3/12	3 HRS
		u 3/18	4
		u 3/19	8

MATERIAL/EQUIPMENT			LABOR TOTAL
ITEM	QUANTITY	UNIT PRICE	TOTAL

TOTAL MATERIAL/EQUIPMENT _____
 TOTAL LABOR _____
 TOTAL ADDITIONAL CHARGE FOR ABOVE WORK

Above additional work to be performed under same conditions as specified in original contract unless otherwise stipulated.

Date _____ Authorizing Signature _____ (OWNER SIGNS HERE)
 Approved By  VTO 3/22/10 Date _____
 Print Name _____ (CONTRACTOR SIGNS HERE)

602
70



REQUEST FOR INFORMATION

No. 00235

TITLE: Police Station, Door 209

DATE: 12/2/2009

PROJECT: Sausalito Public Safety Facilities

PROJECT#: 28011

TO: Attn: Dave Zaro
Glass Architects
200 E Street
Santa Rosa, CA 95404
Phone: 707-544-3920 Fax: 707-544-2514

DSA#:
APP#:
REQUIRED DATE: 12/9/2009

SUBCONTRACTOR NAME:

ACI, INC

SPEC. SECTION: 08000

FORWARDED TO:

FORWARDED DATE:

CC:

REQUEST:

ASI # 1 did not include direction to change the dimensions of door 209, in the description where others doors were changed. The floor plan was changed around the door and was changed from a pair to a single. The comments made on the returned submittal called for a 3'0", however it will have to be changed to 2'4", due to the storage room dimensions. Please confirm.

Requested By: Alten Construction, Inc

Date: 12/2/2009

Signed: _____

Paul Fitzgerald

SUGGESTION:

Cost Impact: Yes

Schedule Impact: No

Signature: _____

Work Impact: No

REVIEW AND APPROVAL TO SUBMIT RFI BY INSPECTOR AND/OR DISTRICT:

By: _____ **Date:** _____

ANSWER:

A door width of 2'-4" or 2'-6" will be OK, whatever fits the dimension of Room 209 with jambs not exceeding 4 inches.
David Zaro, Glass Architects 4 December 2009

Answered By: Glass Architects

Date: _____

Signed: _____

Dave Zaro

692
71



REQUEST FOR INFORMATION

No. 00283

TITLE: Door M04

DATE: 1/21/2010

PROJECT: Sausalito Public Safety Facilities

PROJECT#: 28011

TO: Attn: Dave Zaro
Glass Architects
200 E Street
Santa Rosa, CA 95404
Phone: 707-544-3920 Fax: 707-544-2514

DSA#:
APP#:
REQUIRED DATE: 1/26/2010
SUBCONTRACTOR NAME:
ACI, INC
SPEC. SECTION: 08000

FORWARDED TO:
FORWARDED DATE:
CC:

REQUEST:

The changes at the mezzanine 1 Fire Station included relocation and down-sizing of door M04. The structural steel above will not allow for a 7'0" without notching the upper corner or reducing the height of the jamb by 1". This however requires the jamb being sent back to be worked due to the rating of the jamb. Another option would be going to a 6'8" door height. Please advise.

Requested By: Alten Construction, Inc

Date: 1/21/2010

Signed: _____
Paul Fitzgerald

SUGGESTION:

Cost Impact: Unknown **Schedule Impact:** Unknown **Signature:** _____

Work Impact: No

REVIEW AND APPROVAL TO SUBMIT RFI BY INSPECTOR AND/OR DISTRICT:

By: _____ **Date:** _____

ANSWER:

The Door Assembly is fire-rated. This fire rating was included not as a strict code requirement, but as a suggestion by Contra Costa County (as plan review agency) as a good idea. Notch the head casing as little as possible to clear the steel beam; this should be a strip of about 1/2 inch off the top corner. This approach may void the overall fire-rating of the assembly, but will preserve the intent of the suggested protection.

David Zaro, Glass Architects 3 February 2010

Answered By: Glass Architects

Date: _____

Signed: _____
Dave Zaro

6A2
72



TRANSMITTAL

720 12th St.
Richmond, CA 94801

Phone: 510-234-4200
Fax: 510-234-4402

Project Name: Sausalito Fire & Safety **Date:** 3/19/10 1:53 PM
Attn: Loren Umbertis **Project No.** 28011
To: Swinerton Managment & Consulting
Email:
Phone: 1-415-421-2980
FAX: 1-415-984-1292 **Number of pages including this transmittal sheet: 3**

The attached Change Order is transmitted via: Email

G.C. Request No. CO-097
RFI No. RFI's 274 & 216a

Remarks:

Please find attached our change order.

Signed: _____
Andrew Nortz

You have received this transmittal from Alten Construction. If you did not receive the total pages indicated, please call (510) 234-4200.\

6A2
73



Change Order Request Summary

Alten Construction, Inc.
720 12th Street
Richmond, CA 949801
Tel: (510) 234-4200
Fax: (510) 234-4402

G.C. Request No.: CO-097
Directive: RFI's 274 & 216a
CO Package No.:
Submitted on: 3/19/10 1:44 PM
Approved on:

Project: Sausalito Fire & Safety
Subject: Added Steel at Stair 2

Project No.: 28011

Description of Scope Change:

This change order is for the added steel angles for the low walls at stair 2 and the added tube steel bracing for the low walls at the stair runners. This work was directed by RFI's 274 & 216a.

Cost Summary:

1	General Contractor's Cost Breakdown	
a.	Labor	\$0
b.	Material	\$0
c.	Tax (material)	\$0
d.	Equipment	\$0
e.	Other items	\$0
2	Subcontractors' Subtotal (see attachment)	\$2,429
3	Total profit and overhead	\$206
4	Bonds and Insurance at 2.2% of total	\$58
5	Change Order Request Total Cost	\$2,693

Compensable days:

Non-compensable days:

Above prices subject to cost changes if not accepted in 14 days. All amounts shown are in US Dollars. It is mutually agreed that, if job escalation is required, a loss of productivity will result and reimbursement will be due.

Notwithstanding any other provision of this change order, the following are not waived or released and all rights are reserved with respect to: (1) extensions of time in connection with the above work; and (2) items omitted from or not priced in the proposal, including items not specifically described, costs of associated delays, disruption, acceleration, impacts on other work, etc.

No work will commence on the above until written authorization has been received in our office.

Adjustment of the Contract Sum: \$2,693

ACI PM: _____ Date: _____ ACI Management: _____ Date: _____

Architect: _____ Date: _____ IOR: _____ Date: _____

Construction manager: _____ Date: _____

Owner's Response: Accept: _____ Reject: _____ Other: _____

Signature: _____ Title: _____ Date: _____

6A2
74



Change Order Request Cost Breakdown

Alten Construction Inc.
 720 12th Street
 Richmond, CA 949801
 Tel: (510) 234-4200
 Fax: (510) 234-4402

G.C. Request No.: CO-097
 Directive: RFI's 274 & 216a
 Package No.:

Project: Sausalito Fire & Safety
Description: Added Steel at Stair 2
 (All amounts shown are in US Dollars)

Project No.: 28011

Cost Code	Description	Qty.	Price	Per	Amount
51220-MISC STEEL FIRE	Added Steel at Stair 2	1	2,429.00	1 Piece	2,429.00
	Profit and overhead Subcontractor (8.5%)	1	206.00	1 Piece	206.00
	Bonds and insurance (2.2%)	1	58.00	1 Piece	58.00
Tax					
Total					\$2,693

6A2
75

Sausalito Public Safety Facilities, 28011

Company Name:

Kwan Wo Ironworks, Inc.

Change Order Request No: 23

Description of work:

Install sill angles

RFI No.: 216

Architect's Supplemental Instruction (ASI) No.:

Labor

Labor Classification	Hours	Rate	Total Labor Cost
Site Labor	24	\$75.94/hr	\$1,823

Material

Description	Quantity	Unit Cost	Total Material Cost
steel angles			\$220

Equipment

Type of Equipment	Time	Rate	Total Equipment Cost
welding machine	1 day	\$60/day	\$60

Subtotal =	Sub Total	\$2,103
-------------------	------------------	----------------

Allowable Overhead & Profit:	10%	Overhead & Profit
		\$ 210

Subtotal =	Sub Total	\$ 2,313
-------------------	------------------	-----------------

Allowable Overhead & Profit:	5%	Overhead & Profit
		\$ 116

Total Cost = (Subtotal + Overhead & Profit)	Total Cost	\$ 2,429
--	-------------------	-----------------

Print Name: Ricky Ng

3/16/2010

Signature: _____

LEAZ
76



REQUEST FOR INFORMATION

No. 00274

TITLE: Low Wall at Landing Stair II

DATE: 1/19/2010

PROJECT: Sausalito Public Safety Facilities

PROJECT#: 28011

TO: Attn: Dave Zaro
Glass Architects
200 E Street
Santa Rosa, CA 95404
Phone: 707-544-3920 Fax: 707-544-2514

DSA#:

APP#:

REQUIRED

DATE: 1/22/2010

SUBCONTRACTOR NAME:

ACI, INC

SPEC. SECTION: 06000

FORWARDED TO:

FORWARDED DATE:

CC:

REQUEST:

Reference; 2/AF5.4

The North elevation shows a low wall at the landing between the mezzanine but does not on the South elevation. The approved Deco railing drawings show a low wall. If a low wall is to be added we believe there should be an angle similar to the added angle at the second floor landing that allows for more clear space and that will allow the low wall to plane and still have footing. Please advise.

Requested By: Alten Construction, Inc

Date: 1/19/2010

Signed: Paul Fitzgerald

SUGGESTION:

Cost Impact: Unknown Schedule Impact: Unknown Signature:

Work Impact: Unknown

REVIEW AND APPROVAL TO SUBMIT RFI BY INSPECTOR AND/OR DISTRICT:

By: Date:

ANSWER:

The low wall is shown in Floor Plan AF2.3 and Interior Elevation 2/AF5.4 North. It is not added. The low wall should align with the stair opening wall to the North. If alignment requires adjustment at the bottom of wall, I will have to review it in the field or you can send a photo or dimensioned sketch.

David Zaro, Glass Architects 21 January 2010

Site visit to review 22 January 2010: In order to align the low wall with the full-height stairwell wall, a steel angle can be placed on the steel stringer similar to our response to RFI 216b.

David Zaro, Glass Architects 26 January 2010

Dave Zaro

GA2 77



REQUEST FOR INFORMATION

No. 00216a

TITLE: Low walls at Handrails at Stair #2

DATE: 11/17/2009

PROJECT: Sausalito Public Safety Facilities

PROJECT#: 28011

TO: Attn: Dave Zaro
Glass Architects
200 E Street
Santa Rosa, CA 95404
Phone: 707-544-3920 Fax: 707-544-2514

DSA#:

APP#:

REQUIRED

DATE: 11/24/2009

SUBCONTRACTOR NAME:

ACI, INC

SPEC. SECTION: 09000

FORWARDED TO:

FORWARDED DATE: 12/2/2009

CC:

REQUEST:

Reference: Sheet AF 2.3

At Stair #2 at the handrail location of the floor plan, there are no low walls shown. The floor plan calls for 3'9", if this dimension is to be kept, the bottom of wall will be off the landing. The bathroom wall and landing are installed per plan. Please provide a lay-out location for the low wall at the landing between the mezzanine and the 2nd floor. Please reference steel stair shop drawings and provide wall locations at stair stringers. The elevations for the stairwell do not show the area correctly but do show a low wall in two of the five elevations for the stairwell. Detail C4/A9.3 is flagged in one of these elevations but no further direction is given. We are requesting further details to be provided for support and further detailing for location/lay-out for the low wall install. Thank you.

Requested By: Alten Construction, Inc

Date: 11/17/2009

Signed: _____
Paul Fitzgerald

SUGGESTION:

Cost Impact: Unknown **Schedule Impact:** No **Signature:** _____

Work Impact: No

REVIEW AND APPROVAL TO SUBMIT RFI BY INSPECTOR AND/OR DISTRICT:

By: _____ **Date:** _____

ANSWER:

1. Top Landing: The existing dimension, face of wall to edge of floor is about 3'-7 1/2". Set face of 3 5/8" metal stud at face floor opening: The dimension for travel once completed should be about 3'-3 1/4" clear.

Glass Architects

12/2/2009

Dave Zaro

6A2
78



2. Wall between mezzanine and Second Floor location: Per C4/A9.3, the 3 5/8" metal stud wall framing is centered on the pair of stair stringers. Starting at the top the upper wall is low at +42" above stair nosings; below, it spans from stringer to stringer.

3. Low wall supports: In most cases, the low wall returns with a 90 degree corner or spans from stringer-to-stringer. At tone location, (down from the tip 7 treads), a simple steel angle can be added to resist lateral forces.

See attached Sketches.

Dave Zaro 12.02.09

The steel angle can be 3 x 3 x 3/16" welded to the stringers or steel beam at the bottom. If 3" x 3" x 3/16" tube steel is available, it would work also. See attached partial plan for location. We don't think any additional stiffeners will be required, as the wall spans are 6 feet -7 feet and the top track is stiffened by a hardwood cap. It would be a good idea to upgrade the low wall top tracks from 20 gauge to 16 gauge. Thank you for the field questions.

David Zaro, email 12.03.09 with new attachment

As discussed on site yesterday, we would like to stay with the 3 5/8" metal studs at the middle wall of the Fire Stair No. 2. These studs can be notched to continue past the stringers, and the reveals should work out just fine as shown on the previous detail sketch.

At the upper floor, can you give us a 'ballpark' price for the added steel angle to support the framed low wall? We would like to proceed with the added 4" x 4" angle support if the cost is not extreme. This would increase the current 3'-3" clear circulation space to about 3'-7". Thank you.

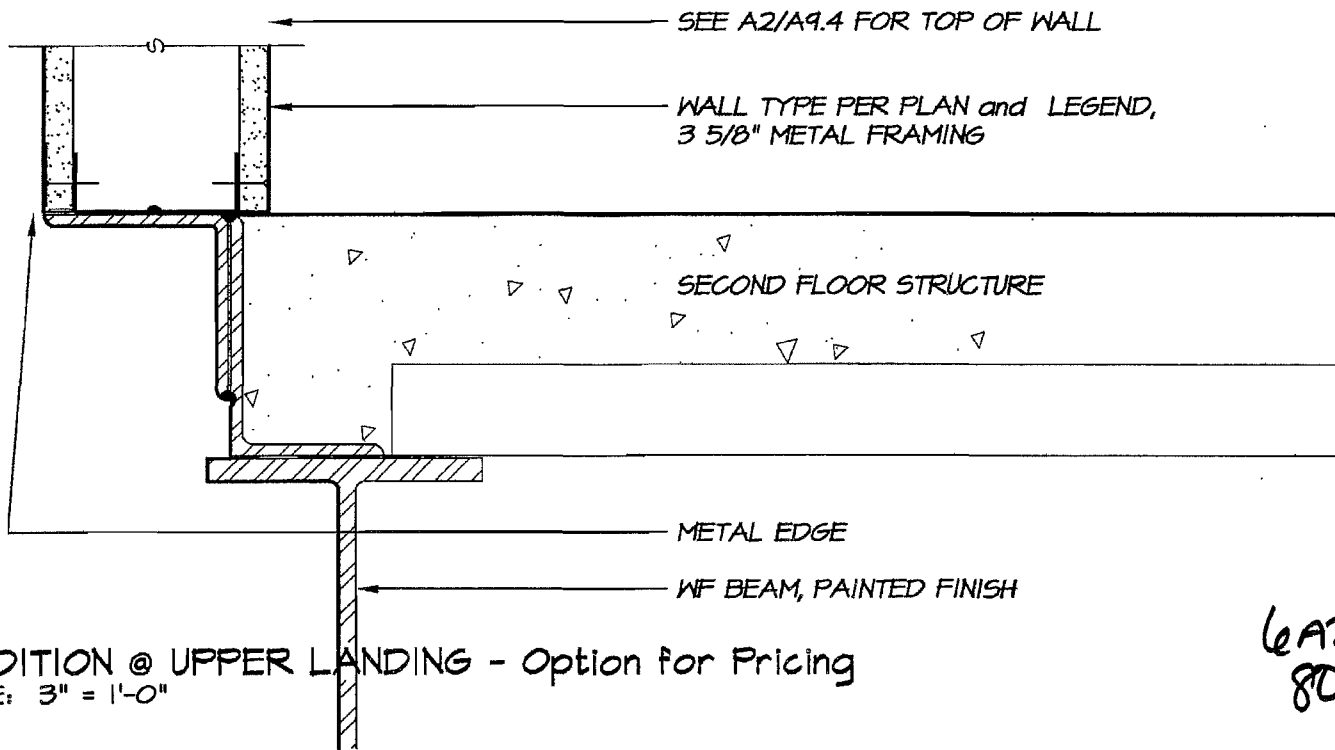
Dave Zaro, email 12.07.09

Answered By: Glass Architects

Date: 12/2/2009

Signed: _____
Dave Zaro

6A2
79



CONDITION @ UPPER LANDING - Option for Pricing
 SCALE: 3" = 1'-0"

6A2
80



TRANSMITTAL

720 12th St.
Richmond, CA 94801

Phone: 510-234-4200
Fax: 510-234-4402

Project Name: Sausalito Fire & Safety **Date:** 3/9/10 3:06 PM
Attn: Loren Umbertis **Project No.** 28011
To: Swinerton Managment & Consulting
Email:
Phone: 1-415-421-2980
FAX: 1-415-984-1292 **Number of pages including this transmittal sheet: 3**

The attached Change Order is transmitted via: Email

G.C. Request No. CO-094
RFI No. RFI-301

Remarks:

Please find attached our change order.

Signed: _____
Andrew Nortz

You have received this transmittal from Alten Construction. If you did not receive the total pages indicated, please call (510) 234-4200.\

602
81



Change Order Request Summary

Alten Construction, Inc.

720 12th Street
 Richmond, CA 949801
 Tel: (510) 234-4200
 Fax: (510) 234-4402

G.C. Request No.: CO-094
 Directive: RFI-301
 CO Package No.:
 Submitted on: 3/9/10 3:00 PM
 Approved on:

Project: Sausalito Fire & Safety
Subject: Final Gas and Water Solenoid Direction

Project No.: 28011**Description of Scope Change:**

This change order is for the cost of having to move the gas solenoid that was already installed based on the final direction of RFI-301. This cost is only for the plumbers added work to move the device as SM Leslie Electric feels the revised work closely resemble what they originally assumed based on the contract drawings (i.e. they will not be charging for the additional work). All necessary Drywall patching and demo will be done on T&M and submitted at a later date.

Cost Summary:

1	General Contractor's Cost Breakdown	
a.	Labor	\$0
b.	Material	\$0
c.	Tax (material)	\$0
d.	Equipment	\$0
e.	Other items	\$0
2	Subcontractors' Subtotal (see attachment)	\$1,868
3	Total profit and overhead	\$159
4	Bonds and Insurance at 2.2% of total	\$45
5	Change Order Request Total Cost	\$2,072

Compensable days:

Non-compensable days:

Above prices subject to cost changes if not accepted in 14 days. All amounts shown are in US Dollars. It is mutually agreed that, if job escalation is required, a loss of productivity will result and reimbursement will be due.

Notwithstanding any other provision of this change order, the following are not waived or released and all rights are reserved with respect to: (1) extensions of time in connection with the above work; and (2) items omitted from or not priced in the proposal, including items not specifically described, costs of associated delays, disruption, acceleration, impacts on other work, etc.

No work will commence on the above until written authorization has been received in our office.

Adjustment of the Contract Sum: **\$2,072**

ACI PM: _____ Date: _____ ACI Management: _____ Date: _____

Architect: _____ Date: _____ IOR: _____ Date: _____

Construction manager: _____ Date: _____

Owner's Response: Accept: _____ Reject: _____ Other: _____

Signature: _____ Title: _____ Date: _____

6A2
82



Change Order Request Cost Breakdown

Alten Construction Inc.
720 12th Street
Richmond, CA 949801
Tel: (510) 234-4200
Fax: (510) 234-4402

G.C. Request No.: CO-094
Directive: RFI-301
Package No.:

Project: Sausalito Fire & Safety

Project No.: 28011

Description: Final Gas and Water Solenoid Direction

(All amounts shown are in US Dollars)

Cost Code	Description	Qty.	Price	Per	Amount
154140-PLUMBING ROUGH POL	Relocate Gas Solinoid	1	1,868.00	1 Piece	1,868.00
	Profit and overhead Subcontractor (8.5%)	1	159.00	1 Piece	159.00
	Bonds and insurance (2.2%)	1	45.00	1 Piece	45.00
Tax					
Total					\$2,072

EA2
83



720 12th Street

Richmond, CA 94801

REQUEST FOR INFORMATION

No. 00301

TITLE: Gas Solenoid RFI Addendum/Response

DATE: 2/3/2010

PROJECT: Sausalito Public Safety Facilities

PROJECT#: 28011

TO: Attn: Dave Zaro
Glass Architects
200 E Street
Santa Rosa, CA 95404
Phone: 707-544-3920 Fax: 707-544-2514

DSA#:

APP#:

REQUIRED

DATE: 2/10/2010

SUBCONTRACTOR NAME:

LESLIE

SPEC. SECTION: 16000

FORWARDED TO:

FORWARDED DATE:

CC:

REQUEST:

The following RFI was submitted by SM Leslie Electric:

SML-#46 part 3

Please clarify. Note 24 in this j-box will be a reset switch and what does this connect to? J-box for Note 23 appears to be a detail from 1/E5.4. Also, there is no solenoid located at range location. Please advise.

Requested By: Alten Construction, Inc

Date: 2/3/2010

Signed: Andrew Nortz

SUGGESTION:

Per Site Meeting of 12 February 2010 and confirmation by the Fire Department, we've simplified the previous responses as follows:

- Two gas solenoid valves have been reduced to one gas solenoid valve
- Two gas reset switches have been reduced to one gas reset switch

In addition, the Drain Diversion Diagram on Drawing E7.3 has been revised to include the solenoid water valve and sequence of operations.

This provides all information requested in the Site Meeting of 12 February 2010.

Please review and advise of any further questions.

David Zaro, Glass Architects 19 February 2010

POWER FOR SOLENOID IS CIRCUIT ELDP-9, AS SHOWN ON E5.4. FIRE STATION RING DOWN SYSTEM INITIATES SOLENOID AND GAS SHUTDOWN. SEE NOTE 8 ON E5.4. VALVE RESET BUTTON LOCATED AT COLUMNS 6 & C AS SHOWN ON EF3.3.

PER MECHANICAL REVISIONS, ONE SOLENOID VALVE LOCATED ON MEZZ LEVEL FOR BBQ AND STOVE. NOTES 23 & 24 ON EF3.3 ADDED PER APR 14 HAVE BEEN REVISED. SEE ATTACHED REVISION SKETCHES.

H. LIM, O; MAHONY & MYER
2-18-10

6A2
84

Signed: Dave Zaro

BLACK SEA CORPORATION

Lic. # 694989

4735 MISSION STREET, SAN FRANCISCO, CA 94112
Tel. 415 333-8499, Fax. 415 333-8470, e-mail: Blackseacorp@hotmail.com

SUPPORTING DOCUMENTATION FOR THE COST PROPOSAL #15

Subcontractor Name: Black Sea Corp:
Work Activity: PLUMBING
Project: Sausalito police and fire stations

Additional solenoid gas valve 1 1/2"
RFI# 301
Sausalito Fire Station

RECAP

MATERIAL	Supplier Restocking	
	Deduct Materials	
	New Materials	\$ 786.00
	Cartage (10 %)	
	Freight	
	Material Off Site Storage	
	Sub Total Material	\$786.00
LABOR	Skilled Labor	\$ 555.32
	Unskilled Labor	
	Working Foreman (10 %)	
	Project Manager	
	Payroll taxes and insurance	\$ 153.90
	Subtotal Labor	\$709.22
Other Cost	Processing	
	As Built	
	Small Tools (@ 2%)	
	Safety (@ 4 %)	
	Equipment Owned	
	Subtotal Other Cost	\$0.00
	SUBTOTAL COST	\$1,495.22
	OVERHEAD (15%)	\$224.28
	LIABULITY INSURANCE 4.2%	\$72.22
	SALES TAX (9.75%)	\$76.64
	TOTAL	\$1,868.36
	TOTAL PRICE FOR CHANGE	\$1,868

602
85

SUPPORTING DOCUMENTATION FOR THE COST PROPOSAL #15

Plumbing Labor	Appren Labor	Date / Material	Size	Qty	Unit	Unit Cost	Extended Cost
ADD	ADD						
4.0	3.0	Provide additional gas with solenoid valve	1 1/2"	1	Ea	\$ 786.00	\$ 786.00

4.0 3.0

NEW MATERIAL

\$ 786.00

LABOR RECAP		Hr/Rate	Total /Hrs	Extended Direct Cost	Extended Taxes/Insu Cost
Plumbers	Direct Cost	53.00	4.00	\$ 212.00	
	Fringe Benefits	34.50	4.00	\$ 138.00	
	Taxes & Insurance	24.78	4.00		\$ 99.12
Apprent.	Direct Cost	36.00	3.00	\$ 108.00	
	Fringe Benefits	32.44	3.00	\$ 97.32	
	Taxes & Insurance	18.26	3.00		\$ 54.78

Skilled labor \$ 555.32

Taxes and insurance \$ 153.90

Signature:

Date: 2/24/10

6A2
86

Andrew Nortz

From: Dave Delicio [smledave@gmail.com]
Sent: Monday, March 08, 2010 9:56 AM
To: Andrew Nortz
Subject: Gas solenoid

Andrew-

Gas solenoid- No change. Amount of work close to original scope. Hose bib solenoid, just get that concrete board off and we will complete pipe work. Not enough to worry about to create paperwork and our time to process.

--
Dave D'Elicio
S.M. Leslie Electric, Inc

6A2
87



TRANSMITTAL

720 12th St.
Richmond, CA 94801

Phone: 510-234-4200
Fax: 510-234-4402

Project Name: Sausalito Fire & Safety
Attn: Loren Umbertis
To: Swinerton Managment & Consulting
Email:
Phone: 1-415-421-2980
FAX: 1-415-984-1292

Date: 3/9/10 3:20 PM
Project No. 28011

Number of pages including this transmittal sheet: 3

The attached Change Order is transmitted via: Email

G.C. Request No. CO-095
RFI No. RFI-299R

Remarks:

Please find attached our change order.

Signed: _____
Andrew Nortz

You have received this transmittal from Alten Construction. If you did not receive the total pages indicated, please call (510) 234-4200.\

GA2
88



Change Order Request Summary

Alten Construction, Inc.
720 12th Street
Richmond, CA 949801
Tel: (510) 234-4200
Fax: (510) 234-4402

G.C. Request No.: CO-095
Directive: RFI-299R
CO Package No.:
Submitted on: 3/9/10 3:15 PM
Approved on:

Project: Sausalito Fire & Safety
Subject: Added Electrical for Fume Hood

Project No.: 28011

Description of Scope Change:

This change order is for the electrical work directed by RFI-299. The work included in this cost is only that work shown on the enclosed backup documentation. SM Leslie specifically excludes a local switch at the hood location. If this is necessary at a later date then there will be additional costs submitted.

Cost Summary:

1 General Contractor's Cost Breakdown	
a. Labor	\$0
b. Material	\$0
c. Tax (material)	\$0
d. Equipment	\$0
e. Other items	\$0
2 Subcontractors' Subtotal (see attachment)	\$1,211
3 Total profit and overhead	\$103
4 Bonds and Insurance at 2.2% of total	\$29
5 Change Order Request Total Cost	\$1,343

Compensable days:

Non-compensable days:

Above prices subject to cost changes if not accepted in 14 days. All amounts shown are in US Dollars. It is mutually agreed that, if job escalation is required, a loss of productivity will result and reimbursement will be due.

Notwithstanding any other provision of this change order, the following are not waived or released and all rights are reserved with respect to: (1) extensions of time in connection with the above work; and (2) items omitted from or not priced in the proposal, including items not specifically described, costs of associated delays, disruption, acceleration, impacts on other work, etc.

No work will commence on the above until written authorization has been received in our office.

Adjustment of the Contract Sum: \$1,343

ACI PM: _____ Date: _____ ACI Management: _____ Date: _____

Architect: _____ Date: _____ IOR: _____ Date: _____

Construction manager: _____ Date: _____

Owner's Response: Accept: _____ Reject: _____ Other: _____

Signature: _____ Title: _____ Date: _____

6A2
89



Change Order Request Cost Breakdown

Alten Construction Inc.
 720 12th Street
 Richmond, CA 949801
 Tel: (510) 234-4200
 Fax: (510) 234-4402

G.C. Request No.: CO-095
 Directive: RFI-299R
 Package No.:

Project: Sausalito Fire & Safety
Description: Added Electrical for Fume Hood
 (All amounts shown are in US Dollars)

Project No.: 28011

Cost Code	Description	Qty.	Price	Per	Amount
160210-ELEC ROUGHIN POLICE	Added Electrical for Fume Hood	1	1,211.00	1 Piece	1,211.00
	Profit and overhead Subcontractor (8.5%)	1	103.00	1 Piece	103.00
	Bonds and insurance (2.2%)	1	29.00	1 Piece	29.00
Tax					
Total					\$1,343

6A2
90



REQUEST FOR INFORMATION

No. 00299 R

Richmond, CA 94801

TITLE: Fume Hoods

DATE: 2/2/2010

PROJECT: Sausalito Public Safety Facilities

PROJECT#: 28011

TO: Attn: Dave Zaro
Glass Architects
200 E Street
Santa Rosa, CA 95404
Phone: 707-544-3920 Fax: 707-544-2514

DSA#:

APP#:

REQUIRED

DATE: 2/9/2010

SUBCONTRACTOR NAME:

LESLIE

SPEC. SECTION: 16000

FORWARDED TO:

FORWARDED DATE:

CC:

REQUEST:

The following RFI was submitted by SM Leslie Electric:

SML- #74

At locations 119 evidence and 116 corridor, fume hood requirements are still unclear. Per M1.1 E8/E9, show as a fan. E6.1 panel schedule show 20A, 1 pole connection and EP3.1 note #13 refer back to mechanical. Ryan from Untied (supplier for hood), has started via email that units have 3 devices tied back to 1 j-box. So 20A.1 pole connection per prints look to be sufficient to power fume hood, but what and how do the fans above units operate? A change order will be required for these hoods at both locations so we must know exactly how all components work together.

Requested By: Alten Construction, Inc

Date: 2/2/2010

Signed: _____
Andrew Nortz

SUGGESTION:

Cost Impact: Unknown

Schedule Impact: No

Signature: _____

Work Impact: No

REVIEW AND APPROVAL TO SUBMIT RFI BY INSPECTOR AND/OR DISTRICT:

By: _____

Date: _____

ANSWER:

For EF-8 & 9, provide weatherproof motor rated switch on roof at each unit. Extend conduit & wire (2 #12, 1 #12G, 3/4"C) from roof exhaust fan down to local switch at each hood location. Connect complete. Coordinate exact requirements with hood/motor supplier and mechanical consultant.
H. Lim, O'Mahony & Myer
2-23-10

Answered By: Glass Architects

Date: _____

Signed: _____
Dave Zaro

6A2
91

Sausalito Public Safety Facilities, 28011

Company Name:

S.M. Leslie Electric, Inc.

Change Order Request No: 15

Description of work:

Execute work described in response to RFI#00299 SML#74.

RFI No.: Alten 00299 SML#74

Units shall have space to mount motor rated switch in. Local switch at hood location not included.

Labor

<u>Labor Classification</u>	<u>Hours</u>	<u>Rate</u>	<u>Total Labor Cost</u>
Journeyman Electrician	8	\$95.00	\$760.00

Material

<u>Material description</u>	<u>Quantity</u>	<u>Unit Cost</u>	<u>Total Material Cost</u>
3/4" EMT	80'	\$0.37	\$29.60
3/4" EMT coupling	10	\$1.83	\$18.30
3/4" EMT connectors	4	\$1.99	\$7.96
#12 THHN Wire	90' x 6 = 540'	\$0.25	\$135.00
Motor rated switch	2	\$37.00	\$74.00
Tax 9%			\$23.82

<u>Type of Equipment</u>	<u>Time</u>	<u>Rate</u>	<u>Total Equipment Cost</u>

Subtotal =	<u>Sub Total</u>	\$1,048.41
-------------------	------------------	------------

Allowable Overhead & Profit:	10%	<u>Overhead & Profit</u>	\$104.85
---	-----	------------------------------	----------

Subtotal =	<u>Sub Total</u>	\$1,153.26
-------------------	------------------	------------

Allowable Overhead & Profit:	5%	<u>Overhead & Profit</u>	\$57.67
---	----	------------------------------	---------

Total Cost = (Subtotal + Overhead & Profit)	<u>Total Cost</u>	\$1,210.93
--	-------------------	------------

Print Name: _____ **Date:** _____

Signature: _____

GAZ
92

CITY ELECTRIC SUPPLY
 360 TESCONI CIRCLE
 SANTA ROSA, CA 95401
 (707)523-4600 FAX(707)571-7658

QUOTATION

Quotation Expires
 04/07/10

CONTACT: MARTIN

QUOTE NO. 1037196	SLMN 7041	INSLMN 1234	PAGE 1
DATE 03/08/10	BY MARTIN		
REV. NO. 000	FOB Shipping Point		
REV. DATE 03/08/10	FREIGHT Prepaid		

QUOTE FOR CUSTOMER #: 24-37775

SM LESLIE ELECTRIC INC
 526 PORTAL STREET

COTATI
 CA 94931 USA 707-795-9440

CUS PO #:

JOB NAME:

LN	QTY	MFR	CATALOG	DESCRIPTION	PRICE PER	EXT AMT
01	1	BRY	30003D	30A 600V 3P DISC SW	37.00 E	37.00
TOTAL:						37.00 *

PLEASE NOTE: This is not an offer to contract, but merely a Quotation of current prices for your convenience and information. Orders based on this Quotation are subject to your acceptance of the Terms and Conditions stated in our written acknowledgement of Order. We make no representation with respect to compliance with job specifications.

6A2
 93



TRANSMITTAL

720 12th St.
Richmond, CA 94801

Phone: 510-234-4200
Fax: 510-234-4402

Project Name: Sausalito Fire & Safety **Date:** 3/2/10 11:22 AM
Attn: Loren Umbertis **Project No.** 28011
To: Swinerton Managment & Consulting
Email:
Phone: 1-415-421-2980
FAX: 1-415-984-1292 **Number of pages including this transmittal sheet: 3**

The attached Change Order is transmitted via: Email

G.C. Request No. CO-092
RFI No. RFI-289

Remarks:

Signed: _____
Andrew Nortz

You have received this transmittal from Alten Construction. If you did not receive the total pages indicated, please call (510) 234-4200.\

6A2
94



Change Order Request Summary

Alten Construction, Inc.
720 12th Street
Richmond, CA 949801
Tel: (510) 234-4200
Fax: (510) 234-4402

G.C. Request No.: CO-092
Directive: RFI-289
CO Package No.:
Submitted on: 3/2/10 11:08 AM
Approved on:

Project: Sausalito Fire & Safety
Subject: Added Timer Switch per RFI-289

Project No.: 28011

Description of Scope Change:

This change order is for the cost of an added switch timer per the response to RFI-289. NOTE: there will be rework associated with drywall. This work will be tracked on T&M along with other areas of drywall rework and will be submitted at a later date.

Cost Summary:

1	General Contractor's Cost Breakdown	
a.	Labor	\$0
b.	Material	\$0
c.	Tax (material)	\$0
d.	Equipment	\$0
e.	Other items	\$0
2	Subcontractors' Subtotal (see attachment)	\$603
3	Total profit and overhead	\$51
4	Bonds and Insurance at 2.2% of total	\$14
5	Change Order Request Total Cost	\$668

Compensable days:

Non-compensable days:

Above prices subject to cost changes if not accepted in 14 days. All amounts shown are in US Dollars. It is mutually agreed that, if job escalation is required, a loss of productivity will result and reimbursement will be due.

Notwithstanding any other provision of this change order, the following are not waived or released and all rights are reserved with respect to: (1) extensions of time in connection with the above work; and (2) items omitted from or not priced in the proposal, including items not specifically described, costs of associated delays, disruption, acceleration, impacts on other work, etc.

No work will commence on the above until written authorization has been received in our office.

Adjustment of the Contract Sum: **\$668**

ACI PM: _____ Date: _____ ACI Management: _____ Date: _____

Architect: _____ Date: _____ IOR: _____ Date: _____

Construction manager: _____ Date: _____

Owner's Response: Accept: _____ Reject: _____ Other: _____

Signature: _____ Title: _____ Date: _____

6A2
95



Change Order Request Cost Breakdown

Alten Construction Inc.
 720 12th Street
 Richmond, CA 949801
 Tel: (510) 234-4200
 Fax: (510) 234-4402

G.C. Request No.: CO-092
 Directive: RFI-289
 Package No.:

Project: Sausalito Fire & Safety
Description: Added Timer Switch per RFI-289
 (All amounts shown are in US Dollars)

Project No.: 28011

Cost Code	Description	Qty.	Price	Per	Amount
160140-ELEC ROUGHIN FIRE	Added Timer Switch	1	603.00	1 Piece	603.00
	Profit and overhead Subcontractor (8.5%)	1	51.00	1 Piece	51.00
	Bonds and insurance (2.2%)	1	14.00	1 Piece	14.00
Tax					
Total					\$668

GAZ
96

Sausalito Public Safety Facilities, 28011

Company Name:

S.M. Leslie Electric, Inc.

Change Order Request No: 5

Description of work:

Reference answer to RFI# SML#69

RFI No.: Altan #00289 SML# 69 & 84

Architect's Supplemental Instruction (ASI) No.:

Labor

<u>Labor Classification</u>	<u>Hours</u>	<u>Rate</u>	<u>Total Labor Cost</u>
Journeyman Electrician	4	\$95.00	\$380.00

Material

<u>Material description</u>	<u>Quantity</u>	<u>Unit Cost</u>	<u>Total Material Cost</u>
Tork SSA200 Switch	1	\$70.59	\$70.59
Freight from Tork	1	\$20.00	\$20.00
Back box and ring	1	\$5.00	\$5.00
3/4" EMT	50'	0.19	\$9.50
3/4" EMT straps and fittings	1 Lot		\$25.00
Tax 9%			\$11.71

<u>Type of Equipment</u>	<u>Time</u>	<u>Rate</u>	<u>Total Equipment Cost</u>
N/A			

Subtotal =	Sub Total	\$521.80
-------------------	------------------	----------

Allowable Overhead & Profit: 10%	Overhead & Profit	\$52.18
---	------------------------------	---------

Subtotal =	Sub Total	\$573.98
-------------------	------------------	----------

Allowable Overhead & Profit: 5%	Overhead & Profit	\$28.70
--	------------------------------	---------

Total Cost = (Subtotal + Overhead & Profit)	Total Cost	\$602.68
--	-------------------	-----------------

Print Name: _____ **Date:** _____

Signature: _____

6A2
97



720 12th Street

Richmond, CA 94801

**REQUEST FOR INFORMATION
No. 00289**

TITLE: Exhaust Fan, Police Station

DATE: 1/25/2010

PROJECT: Sausalito Public Safety Facilities

PROJECT#: 28011

TO: Attn: Dave Zaro
Glass Architects
200 E Street
Santa Rosa, CA 95404
Phone: 707-544-3920 Fax: 707-544-2514

DSA#:
APP#:
**REQUIRED
DATE:** 2/1/2010

SUBCONTRACTOR NAME:
LESLIE
SPEC. SECTION: 16000

FORWARDED TO:

FORWARDED DATE:

CC:

REQUEST:

The following RFI was submitted by SM Leslie Electric:

SML-#69

Reference: EP 3.5, MP2.2

Please provide means of control for exhaust fan E-7. This fan is for rooms 213b, 214, 215b.

Requested By: Alten Construction, Inc

Date: 1/25/2010

Signed: _____
Andrew Nortz

SUGGESTION:

Cost Impact: No Schedule Impact: No Signature: _____

Work Impact: No

REVIEW AND APPROVAL TO SUBMIT RFI BY INSPECTOR AND/OR DISTRICT:

By: _____ Date: _____

ANSWER:

Provide and install wall timer switch (Tork SSA200, or equal) adjacent to light switch in room 214 for control of E7. Route E7 circuit homerun via timer switch. Connect complete. Label switch plate ('Fan Timer')
H. Lim, O'Mahony & Myer
2-11-10

Answered By: Glass Architects

Date: _____

Signed: _____
Dave Zaro

6A2
98

CITY ELECTRIC SUPPLY
 360 TESCONI CIRCLE
 SANTA ROSA, CA 95401
 (707)523-4600 FAX(707)571-7658

CONTACT: MARTIN

QUOTE FOR CUSTOMER #: 24-37775

SM LESLIE ELECTRIC INC
 526 PORTAL STREET

COTATI
 CA 94931 USA 707-795-9440

QUOTATION

Quotation Expires
 03/27/10

ATTN:
 DAVE

QUOTE NO. 1037047	SLMN 7041	INSLMN 1234	PAGE 1
DATE 02/25/10	BY MARTIN		
REV. NO. 000	FOB Shipping Point		
REV. DATE 02/25/10	FREIGHT Prepay & Chrgs		

CUS PO #:

JOB NAME:

LN	QTY	MFR	CATALOG	DESCRIPTION	PRICE PER	EXT AMT
01	1	TORK	SEA200	DGTL INWALL W/FLK & BUZ	70.59 E	70.59
02			PLUS FRT.			

\$20⁰⁰

TOTAL: 70.59 *

*9%
 6.36*

76.95

PLEASE NOTE: This is not an offer to contract, but merely a Quotation of current prices for your convenience and information. Orders based on this Quotation are subject to your acceptance of the Terms and Conditions stated in our written acknowledgement of Order. We make no representation with respect to compliance with job specifications.

*6A2
 99*



TRANSMITTAL

720 12th St.
Richmond, CA 94801

Phone: 510-234-4200
Fax: 510-234-4402

Date: 1/25/10 11:47 AM
Project Name: Sausalito Fire & Safety
Project No. 28011
Attn: Loren Umbertis
To: Swinerton Management & Consulting
Email:
Phone: 1-415-421-2980
FAX: 1-415-984-1292
Number of pages including this transmittal sheet: 3

The attached Change Order is transmitted via: Email

G.C. Request No. CO-077
RFI No. Verbal by SMC

Remarks:

Signed: _____
Andrew Nortz

You have received this transmittal from Alten Construction. If you did not receive the total pages indicated, please call (510) 234-4200.\

692
100



Change Order Request Summary

Alten Construction, Inc.
720 12th Street
Richmond, CA 949801
Tel: (510) 234-4200
Fax: (510) 234-4402

G.C. Request No.: CO-077
Directive: Verbal by SMC
CO Package No.:
Submitted on: 1/25/10 11:46 AM
Approved on:

Project: Sausalito Fire & Safety
Subject: Added Building Monitoring

Project No.: 28011

Description of Scope Change:

This change order is for the most recent round of additional building monitoring at the police station (reference NorthStar invoices 4471 and 4606).

Cost Summary:

1	General Contractor's Cost Breakdown	
a.	Labor	\$0
b.	Material	\$0
c.	Tax (material)	\$0
d.	Equipment	\$0
e.	Other items	\$0
2	Subcontractors' Subtotal (see attachment)	\$3,839
3	Total profit and overhead	\$326
4	Bonds and Insurance at 2.2% of total	\$92
5	Change Order Request Total Cost	\$4,257

Compensable days:

Non-compensable days:

Above prices subject to cost changes if not accepted in 14 days. All amounts shown are in US Dollars. It is mutually agreed that, if job escalation is required, a loss of productivity will result and reimbursement will be due.

Notwithstanding any other provision of this change order, the following are not waived or released and all rights are reserved with respect to: (1) extensions of time in connection with the above work; and (2) items omitted from or not priced in the proposal, including items not specifically described, costs of associated delays, disruption, acceleration, impacts on other work, etc.

No work will commence on the above until written authorization has been received in our office.

Adjustment of the Contract Sum: \$4,257

ACI PM: _____ Date: _____ ACI Management: _____ Date: _____

Architect: _____ Date: _____ IOR: _____ Date: _____

Construction manager: _____ Date: _____

Owner's Response: Accept: _____ Reject: _____ Other: _____

Signature: _____ Title: _____ Date: _____

6A2
101



Change Order Request Cost Breakdown

Alten Construction Inc.
 720 12th Street
 Richmond, CA 949801
 Tel: (510) 234-4200
 Fax: (510) 234-4402

G.C. Request No.: CO-077
 Directive: Verbal by SMC
 Package No.:

Project: Sausalito Fire & Safety
Description: Added Building Monitoring
 (All amounts shown are in US Dollars)

Project No.: 28011

Cost Code	Description	Qty.	Price	Per	Amount
10050-SURVEYING	Added Building Monitoring	1	3,839.00	1 Piece	3,839.00
	Profit and overhead Subcontractor (8.5%)	1	326.00	1 Piece	326.00
	Bonds and insurance (2.2%)	1	92.00	1 Piece	92.00
Tax					
Total					\$4,257

EA2
102



909 14th Street
 Modesto, CA 95354
 (209) 524-3525 Phone
 www.nseng.net

Invoice

Date	Invoice #
7/15/2009	4471

Alten Construction
 720 12th Street
 Richmond, CA 94801

Description	Project		Terms
	Current %	Contract Amount	Amount
		08-652 Sausalito Public Safety Facilities	Net 30
1.Improvement Staking Contract Amount: Lump Sum: \$6,560.00 Total Percent Complete: 40% Total Billed to Date: \$2,624.00	0.00%	6,560.00	0.00
2. Additional Services Contract Amount: Time and Materials Previously Invoiced: \$7,925.00 Total Billed to Date: \$9,532.03 ...Set witness corners to the existing property corner monuments that will be destroyed by construction (field survey). Preparation of Corner Records for existing property corner monuments that will be destroyed with proposed improvements. This is a preliminary Corner Record which depicts existing conditions. A final Corner Record will also be required to depict new property corner monuments that will be set at the conclusion of construction. There will be additional work and fees required to set new property corner monuments and to prepare the final Corner Records. ...Corner Record sent to the County. ...Corner Record Submittal Fee. Office Surveyor 13.5 hrs. @ \$105.00 = \$1,417.50 Drafter 2 hrs. @ \$85.00 = \$170.00 Prints/Submittal Fees = \$19.53 Total = \$1,607.03 NOTE: Several existing property corners were destroyed during demolition of the existing site improvements prior to the first survey mobilization. These corners can not be addresses with the typical Corner Record processing. Appropriate methods will be identified at the time of replacement.		0.00	1,607.03
CHANGE ORDER 1		0.00	0.00
Your account is now past due. Please remit payment to our office immediately.		Current Billing	

6A2
 103



909 14th Street
 Modesto, CA 95354
 (209) 524-3525 Phone
 www.nseng.net

Invoice

Date	Invoice #
7/15/2009	4471

Alten Construction
 720 12th Street
 Richmond, CA 94801

Description	Project		Terms
	Current %	Contract Amount	Amount
	08-652 Sausalito Public Safety Facilities		Net 30
1. Revised Location of Police Building Grid Lines Contract Amount: Lump Sum: \$1,905.00 Total Percent Complete: 100% Total Billed to Date: \$1,905.00	0.00%	1,905.00	0.00
\$12,454.00 Previously Billed			0.00
\$9,715.50 Payments Received			
\$1,406.10 Retention			
\$2,939.43 Balance Due			
Terms are Net 30 from the date of this invoice.			0.00
Your account is now past due. Please remit payment to our office immediately.		Current Billing	\$1,607.03

6A2
 104



909 14th Street
 Modesto, CA 95354
 (209) 524-3525 Phone
 www.nseng.net

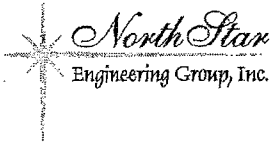
Invoice

Date	Invoice #
10/15/2009	4606

Alten Construction
 720 12th Street
 Richmond, CA 94801

Description	Project		Terms
	Current %	Contract Amount	Amount
		08-652 Sausalito Public Safety Facilities	Net 30
1.Improvement Staking Contract Amount: Lump Sum: \$6,560.00 Total Percent Complete: 40% Total Billed to Date: \$2,624.00	0.00%	6,560.00	0.00
2. Additional Services Contract Amount: Time and Materials Previously Invoiced: \$9,532.03 Total Billed to Date: \$11,763.53 ...Extra Work Order, attached. ...Corner Record Checking Fee. ...Corner Record sent to Marin County. Extra Work Order = \$2,220.00 Prints/Postage/Submittal Fees = \$11.50 Total = \$2,231.50		0.00	2,231.50
NOTE: Several existing property corners were destroyed during demolition of the existing site improvements prior to the first survey mobilization. These corners can not be addresses with the typical Corner Record processing. Appropriate methods will be identified at the time of replacement.			
CHANGE ORDER 1		0.00	0.00
1. Revised Location of Police Building Grid Lines Contract Amount: Lump Sum: \$1,905.00 Total Percent Complete: 100% Total Billed to Date: \$1,905.00	0.00%	1,905.00	0.00
\$14,061.03 Previously Billed \$12,654.93 Payments Received \$1,629.25 Retention \$2,008.35 Balance Due			0.00
For questions regarding your invoice, contact Michelle Ellis at (209) 524-3525 or mellis@nseng.net		Current Billing	

6A2
105



909 14th Street
 Modesto, CA 95354
 (209) 524-3525 Phone
 www.nseeng.net

Invoice

Date	Invoice #
10/15/2009	4606

Alten Construction
 720 12th Street
 Richmond, CA 94801

Description	Project		Terms
	Current %	Contract Amount	Amount
		08-652 Sausalito Public Safety Facilities	Net 30
Terms are Net 30 from the date of this invoice.			0.00
For questions regarding your invoice, contact Michelle Ellis at (209) 524-3525 or mellis@nseng.net		Current Billing	\$2,231.50

6A2
106



TRANSMITTAL

720 12th St.
Richmond, CA 94801

Phone: 510-234-4200
Fax: 510-234-4402

Project Name:	Sausalito Fire & Safety	Date:	12/15/09 2:16 PM
Attn:	Loren Umbertis	Project No.	28011
To:	Alten Construction, Inc.		
Email:	salten@altenconstruction.com		
Phone:	(510) 234-4200		
FAX:	(510) 234-4402	Number of pages including this transmittal sheet:	3

The attached Change Order is transmitted via: Email

G.C. Request No. CO-045

Remarks:

Signed:
Andrew Nortz

You have received this transmittal from Alten Construction. If you did not receive the total pages indicated, please call (510) 234-4200.\

692
107



Change Order Request Summary

Alten Construction, Inc.
720 12th Street
Richmond, CA 949801
Tel: (510) 234-4200
Fax: (510) 234-4402

G.C. Request No. CO-045
Directive (RFI, etc.)
Other Request Type. PCO
Other Request No.
Package No.
Submitted on 12/15/09 2:13 PM
Approved on
Project No.: 28011

Project: Sausalito Fire & Safety
Description: Added Drain and Waterproofing Along A Line

Scope of Change (Indicate the basis, the location, and the scope change):

This change order is for the Added Drain and Waterproofing Along A Line at the Police station. The work was directed on T&M and all time was verified by Loren Umbertis.

Cost Summary:

1	General Contractor's Cost Breakdown	
a.	Labor	\$1,798
b.	Material	\$366
c.	Tax (material)	\$0
d.	Equipment	\$0
e.	Other items	\$0
2	Subcontractors' Subtotal (see attachment)	\$0
3	Total profit and overhead	\$325
4	Bonds and Insurance at 2.2% of total	\$55
5	Change Order Request Total Cost	\$2,544

Compensable days:

Non-compensable days:

Above prices subject to cost changes if not accepted in 14 days. All amounts shown are in US Dollars. It is mutually agreed that, if job escalation is required, a loss of productivity will result and reimbursement will be due.

Notwithstanding any other provision of this change order, the following are not waived or released and all rights are reserved with respect to: (1) extensions of time in connection with the above work; and (2) items omitted from or not priced in the proposal, including items not specifically described, costs of associated delays, disruption, acceleration, impacts on other work, etc.

No work will commence on the above until written authorization has been received in our office.

Adjustment of the Contract Sum: \$2,544

ACI PM: _____ Date: _____ ACI Management: _____ Date: _____

Architect: _____ Date: _____ IOR: _____ Date: _____

Construction manager: _____ Date: _____

Owner's Response: Accept: _____ Reject: _____ Other: _____

Signature: _____ Title: _____ Date: _____

6A2
108



Change Order Request Cost Breakdown

Alten Construction Inc.
 720 12th Street
 Richmond, CA 949801
 Tel: (510) 234-4200
 Fax: (510) 234-4402

G.C. Request No. CO-045
 Directive (RFI, etc.)
 Other Request Type. PCO
 Other Request No.
 Package No.

Project: Sausalito Fire & Safety

Project No.: 28011

Description: Added Drain and Waterproofing Along A Line

(All amounts shown are in US Dollars)

Cost Code	Description	Qty.	Price	Per	Amount
71310-WATERPROOFING POLICE	Carpenter - foreman	8	80.73	1 Piece	645.84
71310-WATERPROOFING POLICE	Laborer	20	57.59	1 Hour	1,151.80
71310-WATERPROOFING POLICE	3/4" Crushed Rock	1	366.00	1 Piece	366.00
	Profit and overhead Labor (15%)	1	270.00	1 Piece	270.00
	Profit and overhead Material (15%)	1	55.00	1 Piece	55.00
	Bonds and insurance (2.2%)	1	55.00	1 Piece	55.00
Tax					
Total					\$2,544

692
109

DAILY ADDITIONAL WORK AUTHORIZATION



ALTEN CONSTRUCTION
 720 12th Street
 RICHMOND, CALIFORNIA 94801
 (510) 234-4200 Fax (510) 234-4402

2440

CUSTOMER NAME CITY OF Sausalito		PHONE	DATE 10/22
STREET		JOB NAME	JOB NUMBER 28011
CITY	STATE	COST CODE	

DESCRIPTION **INSTALL 4" DRAIN LINE + FILTER FABRIC. * NOT SHOWN IN CIVIL DRAWINGS @ LINE A OF P.S.**

LABOR

CLASSIFICATION	EMPLOYEE NAME	TOTAL
10/12 - CLEAN FTG.S TOP.	J. DEANDA	8
10/21 - INSTALL DRAIN LINE	J. DEANDA / T. FRANKLIN.	8 EA.
10/22 INSTALL DRAIN ROCK @ SAME.	J. DEANDA	4.

MATERIAL/EQUIPMENT

LABOR TOTAL _____

ITEM	QUANTITY	UNIT PRICE	TOTAL
3/4" CRUSH. SLAMROCK INV. 28833	5 YDS / 7 TON		

TOTAL MATERIAL/EQUIPMENT _____

TOTAL LABOR _____

TOTAL ADDITIONAL CHARGE FOR ABOVE WORK

Above additional work to be performed under same conditions as specified in original contract unless otherwise stipulated.

Date _____ Authorizing Signature _____ (OWNER SIGNS HERE)

Approved By (CONTRACTOR SIGNS HERE) Date 11.16.09

NOTE: This Revision becomes part of, and in conformance with, the existing contract.

6A2
110



(AND AFFILIATED COMPANIES)

REMIT TO:
P.O. BOX 808044 PETALUMA, CA 94975-8044
Main Office: (707) 781-9000
Ready Mix Dispatch: (800) 779-5777
www.shamrockmaterials.com

INVOICE
735119

DATE 10-19-09
PAGE # 1
ORDER # 2028
CUSTOMER # 13280

OCT 21 2009

Co45

ALLEN CONSTRUCTION INC.
720 12th STREET
RICHMOND CA 94801-0000

PROJECT #
PROJECT NAME:
CUSTOMER P.O.# PAUL
JOB #:
SHIPPED TO: 333 JOHNSON AVE

PLANT	TICKET	QUANTITY	UOM	PRODUCT	DESCRIPTION	UNIT PRICE	AMOUNT
91	28833	7.01	TON	27169	3/4" CRUSHED ROCK (TON)	37.20	260.77
		1.00	EA	10980	DELIVERY CHARGE	75.00	75.00

ENTERED

Job # 28011 Cost Code _____
Mat _____ Sub _____ Equip _____ Other _____
Check Price _____ Hold _____ Vend # _____
Approved By _____

TERMS: All invoices are due on the 10th day of the month with purchase. Discounts taken after that date will not be given. Any invoice not paid in full by the last day of the month with purchase will be considered past-due and subject to a late charge computed at the periodic rate of 1 1/2% per month (18% per annum). Customer agrees to reimburse Seller for all collection fees and court costs associated with the collection of any invoice.	TOTAL YARDS	TAXABLE AMOUNT	TAX	TOTAL DUE \$365.99
	0.00	\$335.77	\$30.22	
	DISC AMT	IF PAID BY 11/10/09		
	\$5.22			

GAZ
111

