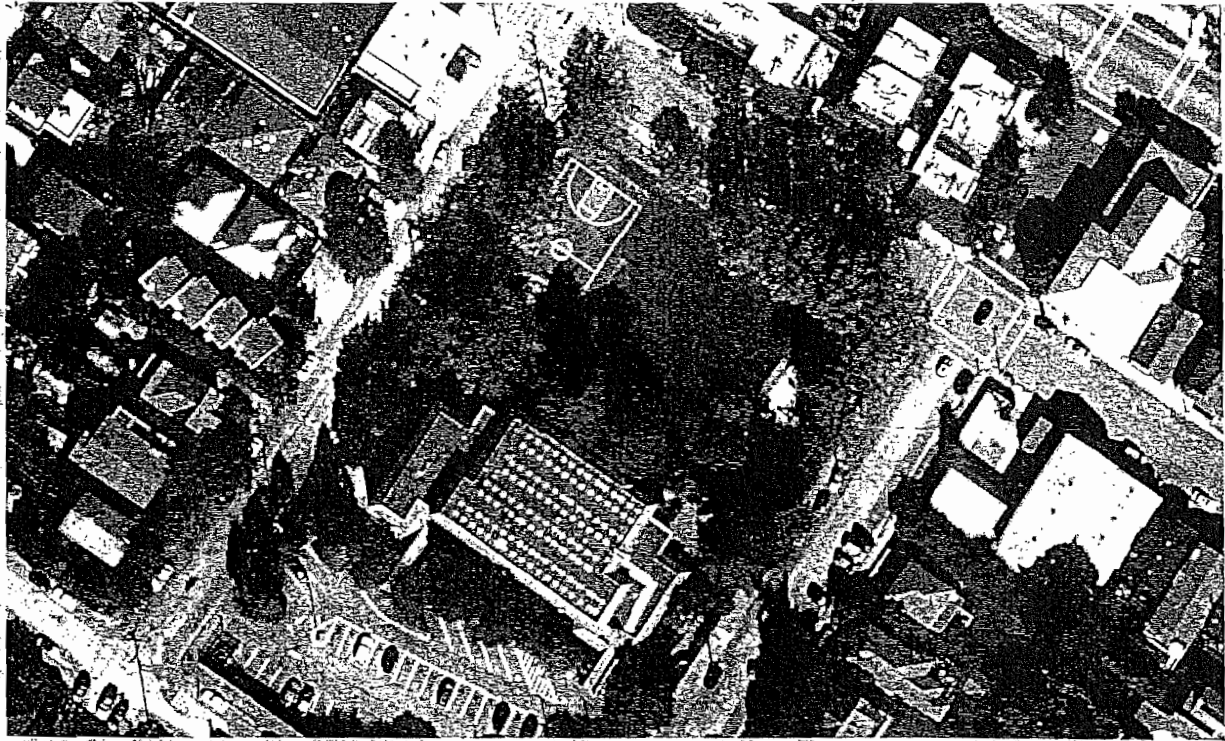


CITY OF SAUSALITO

PROPOSAL FOR ROBIN SWEENEY PARK DESIGN SERVICES



CARDUCCI & ASSOCIATES, INC.
OCTOBER 8, 2010



TABLE OF CONTENTS

COVER LETTER

PART I.

- a. CONTACT INFORMATION
- b. FIRM DESCRIPTION
- c. LEAD CONTACT PERSON
- d. APPROACH TO SCOPE OF SERVICES
- e. PRINCIPAL STAFF AND SUPPORT
- f. WORK HISTORY
- g. SIMILAR PROJECTS
- h. PROJECT ADMINISTRATION
- i. DECLARATION OF NONAFFILIATION
- j. SUBCONSULTANTS
- k. LAWSUITS
- l. LOCATION OF OFFICE WORK
- m. INSURANCE



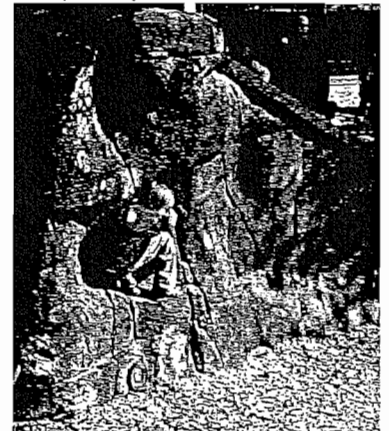
Orange Memorial Park



*Picnic Area at Giorgi Park
Healdsburg, CA*

APPENDIX

- GIORGI PARK
- JULIUS KAHN PLAYGROUND
- BRANDEIS HILLEL DAY SCHOOL PLAY AREA
- ALDO PINESCHI SR. PARK
- PIXAR CHILDCARE PLAY AREA
- STANFORD CHILDCARE PLAY AREA
- MOUNTAIN VIEW CHILDCARE PLAY AREA
- EMERALD GREEN PARK PHASE 3
- CENTRAL PARK
- ROYER/SAUGSTAD PARK
- ALMADEN LAKE PARK
- MAYFAIR COMMUNITY CENTER
- PORTOLA VALLEY TOWN CENTER
- ROSEVILLE TOWN SQUARE
- PLEASANT HILL CITY HALL
- PUBLIC SAFETY FACILITIES
- VETERANS AFFAIRS RESEARCH CENTER



*Giorgi Park
Healdsburg, CA*

PART II. FEE PROPOSAL (IN SEALED ENVELOPE)

- a. HOURLY RATE SCHEDULE
- b. TIME AND MATERIAL FOR BASIC SERVICES
- c. MEETINGS
- d. LEVEL OF SERVICES ITEMIZATION
- e. ADDITIONAL SERVICES
- f. ADDITIONAL RATE SCHEDULE
- g. FEE PROPOSAL FOR LANDSCAPE ARCHITECTURAL SERVICES
- h. WORK SCHEDULE, ASSUMPTIONS, AND ADDITIONAL SERVICES



*Almaden Lake Park
San Jose, CA*

COVER LETTER

October 8, 2010

Mr. Mike Langford, Parks and Recreation Director
City of Sausalito Parks and Recreation Department
420 Litho Street
Sausalito, CA 94965

Dear Mr. Langford:

Carducci & Associates, Inc. is enthusiastic about the potential for improvement of Robin Sweeny Park for the Sausalito community, and we are pleased to present our proposal for landscape architectural services.

Robin Sweeny is still a part-time nurse at The Redwoods in Mill Valley. While working there, she cared for Margaret Fee, mother of Carducci principal Bill Fee. As a result, Bill got to know Robin, who told Bill about her tenure as mayor of Sausalito. Knowing about her dedicated service, we understand why the park is named for her and would be honored to be involved in the renovation of this precious city resource.

Since 1976, Carducci & Associates, Inc. has helped people in communities throughout Northern California envision the future of their communities and environments; address local design and planning situations; solve problems and enrich potentials through public participation; and achieve successful results with completed projects, built within budget and on schedule, that exceed expectations.

We believe the City of Sausalito will benefit from our **unique qualifications**, including:

- An **integrated approach to park design** that incorporates citizen involvement, public safety, ADA requirements, maintenance requirements, resource conservation, sustainable green building design practices, grading and nature-based drainage systems, planting design, water-conserving irrigation design, lighting systems, playgrounds, picnic areas, and related facilities.
- Demonstrated recent success **facilitating the community design process** involving neighbors, specific task forces, community groups, organized groups, concerned citizens, and park commissions and city councils to develop understanding and consensus, resulting in public support for projects.
- Our ability to provide full and **innovative irrigation design** in house for a fully coordinated design that is sustainable and maintainable.
- Our ability to provide a community education process that empowers the owner and citizens to understand and support a project of **highest value to the overall community** that is within the city budget.
- Our commitment to providing improvements consistent with a state-of-the-art park that maximizes preservation of the unique existing landscape qualities and facilitates and incorporates **innovative sustainable designs that provide recreation activities for all ages**.

We understand that elements key to the project's success include:

- Improve visibility and provide clear access and connection to the park from the surrounding neighborhood.
- Provide innovative ideas and a plan that provides a fun and safe park for today and tomorrow.
- Provide ADA compliance through an approach of design excellence and universal access.
- Facilitate a public process that is transparent, inclusive, directed, measurable and feasible.
- Design for cost-effective and efficient facilities and landscapes.
- Provide for the protection of the environment and open-space resources.
- Provide a creative, innovative, art/nature-based play area for use by children and families.
- Provide for better pedestrian and bicycle access to and through the park.
- Improve and update the irrigation system to 2010 ordinance standards.
- Respect and preserve elements of the park such as existing sister city Cherry trees.



*Mayfair Community Center and Park
San Jose, CA*



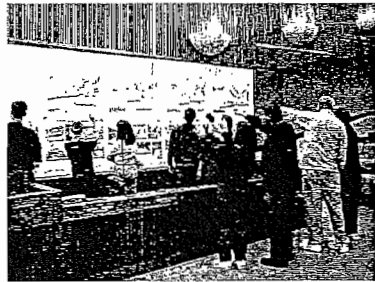
*Julius Kahn Park
San Francisco, CA*



*Giorgi Park
Healdsburg, CA*



Meeting with the "Vision Board"
Giorgi Park
Healdsburg, CA



Emerald Glen Park
Dublin, CA



- Provide a design that allows for add and deduct alternates.
- Provide a park design that is secure, yet inviting and beautiful.
- Provide an opportunity for city and citizen involvement in the construction of specific elements of the park.
- Provide for revenue opportunities in the new park design.

Our proposal demonstrates a successful history of:

- **Working with local community input and interested groups** to develop park improvement projects.
- **Improvement projects for existing parks similar to Sweeny Park** that included turf renovation, playground renovation, ADA upgrades, irrigation system improvements, drainage improvements, site furnishings, and basketball courts, shade structures, lighting, group picnic and shared play areas.

For our work with the Cities of Healdsburg, Roseville, Dublin, San Jose, and San Francisco, we provided park master plans and park reconstruction for sites similar to Robin Sweeny Park.

In San Francisco, we successfully worked with the Pacific Heights Association of Neighbors (PHAN), the City of San Francisco Departments of Public Works and Recreation and Parks, and the Presidio Trust to renovate the Julius Kahn Playground. We were able to build consensus and stay on budget and build months ahead of schedule due to depth of support. We started design in October and in July of the following year opened an exemplary playground for the city parks system termed a "Parisian jewel of a playground" by Mayor Newsom. We have many transferable skills that would directly benefit the Robin Sweeny Park and playground renovation. Another similar experience applicable to your project was the Giorgi neighborhood park rehabilitation in Healdsburg, California. We were able to work closely with the community to replace a 15-year-old community built playground that exceeded the community's expectations. These two parks were listed among the Top Five Playgrounds in Northern California in 2009. Other projects of note in Marin include the Sausalito Fire and Police Station, all the Tam High Schools and Mill Valley School renovations presently under way. All the projects included extensive public workshops, meetings, presentations, and successful consensus-building designs.

We take pride in providing the client and community with excellent service and have developed strong relationships with a number of repeat clients as a result. We believe that **the best innovative design directly involves and responds to the community served and works in concert with the surrounding natural environment.** Our firm is dedicated to providing recreation opportunities for all ages that promote community pride through an effective community input process.

We appreciate the opportunity to submit this proposal and look forward to the opportunity to work with you and the community.

Sincerely,

CARDUCCI & ASSOCIATES, INC.

Vincent P. Lattanzio, Principal
ASLA
RLA No. 2554

William E. Fee, Principal,
ASLA, AICP
RLA No. 2537

PART I. QUALIFICATIONS

a. CONTACT INFORMATION

LEGAL NAME: Carducci & Associates, Inc
BUSINESS ADDRESS: 555 Beach Street, 4th Floor
San Francisco, CA 94133
POINT OF CONTACT: Vince Lattanzio or William E. Fee, Principals
TELEPHONE: 415-674-0990 ext. 214
FAX: 415-674-0999
EMAIL ADDRESS: vince@carducciassociates.com
EMAIL ADDRESS: bill@carducciassociates.com
WEB SITE: www.carducciassociates.com
YEAR ESTABLISHED: 1976
PRINCIPALS: Vincent P. Lattanzio, ASLA; William E. Fee ASLA, AICP
STAFF: 12-14
TAX ID NO: 94-2363816

b. FIRM DESCRIPTION

FIRM HISTORY

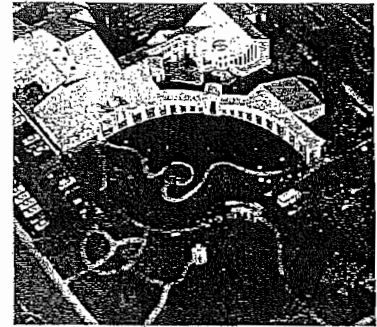
Carducci & Associates, Inc. is a professional landscape architecture and planning firm located in San Francisco. We serve a wide range of clients throughout Northern California and are known as a leader in design quality and client service. Our services include landscape architecture, public facilities planning, urban design, irrigation design and water management. **The firm was established in 1976 by Larry Carducci.** Vincent Lattanzio joined the firm in 1984 and soon became a partner. William E. Fee joined the firm in 1998 as a partner and **Vince and Bill assumed ownership of the firm in 1999.**

FIRM AREAS OF SPECIALIZATION

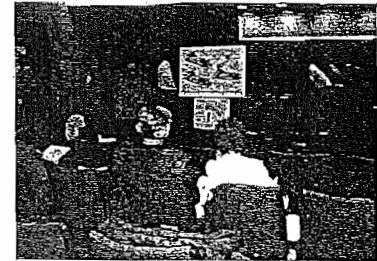
Carducci & Associates **focuses on clients' needs and creating opportunities for interaction between people and nature** resulting in memorable places that delight and inspire. Our firm emphasizes a high level of involvement by the principals in every project and their personal attention to the needs of our clients. **We work closely with our clients to devise creative and effective design and problem-solving strategies.**

Carducci & Associates **specializes in public facility design and has designed parks throughout Northern California**, ranging from small playgrounds, natural turf and synthetic turf ball fields, and outdoor athletic facilities to citywide master planning. **Our focus in park design is on community-building** through creating places for people to meet, play, have fun, and interact in an outdoor setting. We work closely with our clients to develop a successful community input process that is responsive to specific needs and goals.

We are proud of our reputation for gaining **community support on complex issues with difficult decisions through effective communication.** We are an innovative design studio specializing in efficient, sustainable and environmentally sensitive. Our in-house services include irrigation design utilizing the latest technology or water-conserving irrigation systems. We bring our in-depth knowledge of maintenance and bay-friendly landscapes to every project, and use local native plants and drought-tolerant landscape materials to maximize success and minimize resource consumption.



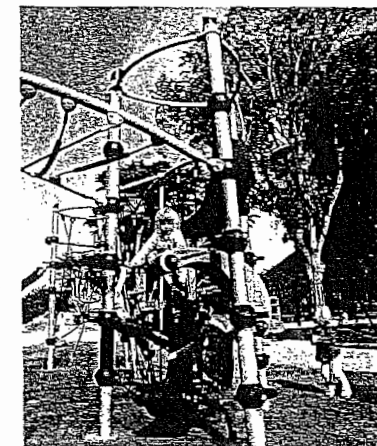
*Pleasant Hill City Hall
Pleasant Hill, CA*



*Almaden Lake Park Community Meeting
San Jose, CA*



*Almaden Lake Park
San Jose, CA*



*Fallon Sports Park
Dublin, CA*

c. LEAD CONTACT PERSON

VINCENT P. LATTANZIO, Principal, is the Partner-in-Charge of urban planning and design. Vincent Lattanzio brings 25 years of experience as a landscape architect and project manager. After completing an urban design Fulbright Scholarship study in Greece and five years of experience with a nationally recognized design firm, he obtained a master's degree with distinction from Harvard University. His expertise in providing unique and appropriate design for park and recreation facilities is enhanced by his environmental background and community planning experience. His ability to design inspiring, sustainable projects adds unique value to his role as project landscape architect. He works closely with the staff and the community while focusing on budget and time constraints.

Professional Qualifications

Registered Landscape Architect, State of California, #2554 (1985)

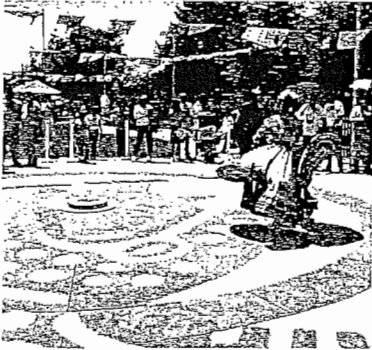
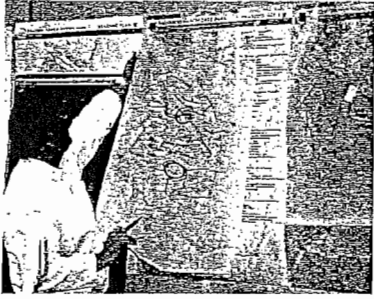
Education

Master of Landscape Architecture

Harvard Graduate School of Design Cambridge, Massachusetts

Bachelor of Landscape Architecture

SUNY College of Environmental Science & Forestry, Syracuse, New York



*Brenda Lopez Memeorial Park
San Jose, CA*



*Brandeis Hillel School
San Rafael, CA*



*Giorgi Park
Healdsburg, CA*

PART I. QUALIFICATIONS

d. APPROACH TO SCOPE OF SERVICES

PHASE A

Conceptual Design

Carducci & Associates, Inc. understands the complexities involved in park improvement planning and design. Our long record of successful park renovation design prepares us well for this project.

Carducci & Associates has expertise in playground design and renovation. We have expertise in universal access design, soil science, drought tolerant planting, water-conserving irrigation design, organic fertilization for turf, lighting that limits impacts on the surrounding neighborhood, and the protection of existing trees.

We use **creative and innovative design approaches** to provide the maximum value possible for a project and utilize state-of-the-art techniques, environmentally appropriate products and methods including: spatially-bold and water-conserving planting designs; water-conserving, centrally controlled irrigation systems; water retaining subsurface drainage systems; recycled materials; structural soils; IPM and best management practices.

We propose to develop a partnership with the City of Sausalito that allows us to work as a team to refine the project needs and goals and to work to fulfill those goals. We will act as communicators to facilitate the final design by building a high level of understanding of and support for project goals, by quietly educating the involved parties on how the park benefits the community as a whole.

Design With Vision

Carducci & Associates, Inc. designs carefully to meet the client's needs and vision within a budget. Designing within a budget requires a **team approach** and a shared responsibility among the owner, the designer and the contractor. We can take several steps to ensure that the design meets the vision and budget.

First, verify with the owner **what the goals are**, verify priorities and understand the assumptions that are the basis for the vision and budget.

Provide **cost estimating** at each phase of the project: Conceptual Plan, 35%, 65%, 95% & 100% construction document submittals. Our cost estimates are based on recent experience and contractor prices, bids and their review of our drawings. Our drawings are adequately detailed, so that an estimator can accurately estimate the cost of the construction and minimize unforeseen conditions and surprises.

Provide **plan checking** by a construction manager or **peer review** for constructability before the construction documents are complete.

We can also develop up to three (3) **add or deduct alternates** that identify improvements that can be added by the owner at bid time or implemented by the owner at a later date. Alternates can allow an owner to have choices that help respect priorities.

We can also have our drawings reviewed by experienced construction manager, consultant, or contractor before the drawings are complete and incorporate their suggestions into the documents.

Investigation and Analysis

Review the existing conditions of the site, including surrounding uses and **determine**



*Emerald Glen Park
Dublin, CA*



*Early Family Learning Center
San Jose, CA*

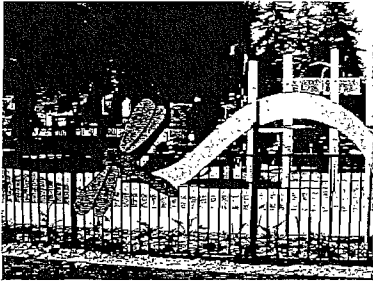


*Aldo Pineschi Senior Park
Roseville, CA*

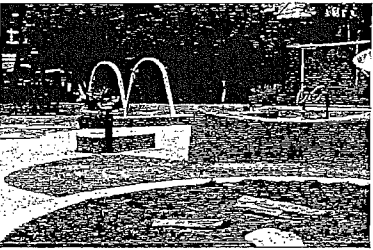


*Sherwood Forest Playground
Royer Park
Roseville, CA*

PART I. QUALIFICATIONS



Mountain View Child Care Center
Mountain View, CA



Julius Kahn Playground
San Francisco, CA



Misty Wood Park
Roseville, CA

what design considerations may be required. We will review potential programmatic project elements with city staff, including security and maintenance tasks the project will require.

We will request that the city provide aerial photographs and other available documents. We will prepare a topographic map.

By articulating the opportunities and constraints of the site and options in a public meeting, the best course of action can be understood and accepted.

We will visit the site and analyze existing park facilities and pathways, topography, soils, sun, fog and wind patterns, rainfall, slopes, vegetation, hydrology, visual character, views, access, adjacent land uses, easements, underground and overhead utilities, erosion, and apparent sensitive resources as well as the extensive tree canopy that exists on this site.

Review City of Sausalito Public Works and Parks Construction Standards.

Green/Ecological Design Analysis

We will analyze the existing park in light of the following five principles of ecological design:

1. Solutions Grow from Place Ecological design begins with the intimate knowledge of a particular place. Therefore, it is small scale and direct, responsive to both local conditions and local people. If we are sensitive to the nuances of place, we can elevate and celebrate the place.

2. Ecological Accounting Informs Design Trace the environmental impacts of existing or proposed designs. Use this information to determine the most ecologically sound design possibility.

3. Design with Nature By working with living processes, we respect the needs of all species while meeting our own. Engaging in processes that regenerate rather than deplete, we become more alive.

4. Everyone Is a Designer Listen to every voice in the design process. No one is participant only or designer only. Everyone is a participant-designer. Honor the special knowledge that each person brings. As people work together to recreate their places, they also recreate themselves.

5. Make Nature Visible Natured environments recognize our need and potential for learning. Making natural cycles and processes visible, bringing the designed environment back to life. Effective design helps inform us of our place within nature.

6. Identify Applicable "Green" Practices and Solutions Specific to the project we would identify opportunities to reuse, reduce, recycle, including ideas such as: reuse onsite materials and possibly renovate rainwater catchment, stormwater filtration and detention, encourage walking and bicycling, and use local construction materials.

Community Process

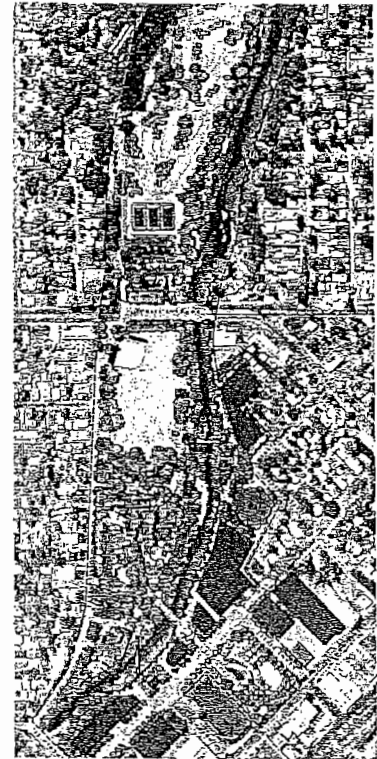
The public and community involvement would include but not be limited to the following tasks:

- Prior to beginning substantive work on the Robin Sweeny Park Project, a **project kick-off meeting with City** would be held to discuss project scope, schedule, budgetary goals, process, deliverables, anticipated improvements,

PART I. QUALIFICATIONS

and future meetings.

- A **second informal meeting with Staff, Project Subcommittee and general public**, if desired, would be scheduled as a **site visit**, awareness walk-through and assessment to discuss site opportunities, constraints, views, natural systems, and contextual setting and neighborhood.
- Carducci & Associates Inc. will attend **two meetings with City Staff and project subcommittee** to present and discuss preliminary design concepts and receive feedback. Perhaps meetings can occur on a Saturday at the Park and City Hall.
- At the third formal meeting, Carducci & Associates Inc. would present the design concepts at **one City Parks and Recreation Commission Meeting**. This **meeting** would confirm and aid in the further development of the alternatives and associated costs while allowing for **further review and input** from City Staff and Parks and Recreation Commission.
- At the fourth formal meeting, Carducci & Associates Inc. would present the design concepts at one **Public Community Meeting**. This **meeting** would help to **identify** some conceptual **options** by gathering response and **input and listening to community needs**. The goal of this meeting is to seek a general consensus of support, to prioritize the various amenities and features to be included in a preferred park scheme.
- At the **fifth meeting**, Carducci & Associates Inc. would provide a **presentation** on the **preferred Park scheme(s)** and color rendering to the **City Council** at **one Study Session Meeting** to allow for further input to improve project design to better meet community goals. Discussion and review of budget would also occur to assure highest value to community and city.
- At the final meeting (if needed) with the City, Carducci & Associates Inc. would review and finalized comments that may have been raised during previous meetings.



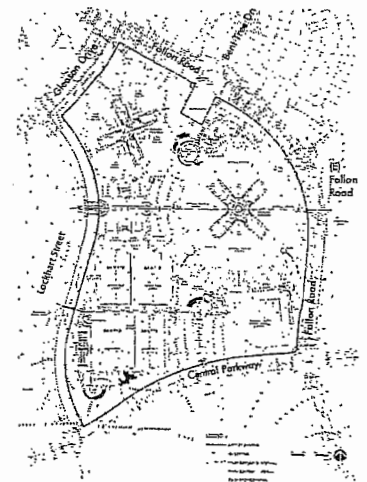
*Royer-Saugstad Master Plan
Roseville, CA*

Community Participatory Planning

Carducci & Associates works to **develop a partnership with the client**, stakeholders, and community, to provide the services necessary for an enjoyable park experience, in budget and on schedule.

Since 1976, Carducci & Associates, Inc. has helped people in communities throughout Northern California to envision the future of their communities and environments; to address local design and planning situations; to solve problems and enrich potentials; and to get real results in terms of implemented, built projects.

When people have the opportunity to come together and decide on the outcome of shared aspirations in their communities, **real democracy is at work**. There is a special process to help people work together toward agreements. It is called Community Participatory Planning. Community Participatory Planning is an attitude - a philosophy - as much as it is a successful process. It is predicated on the conviction that the people who work, learn, worship and play in communities are the best resources for evolving appropriate design and planning solutions for those communities. The basic, "generic" objective of Community Participatory Planning is the achievement of agreement - agreement among participants in community workshops about what should happen in their community.

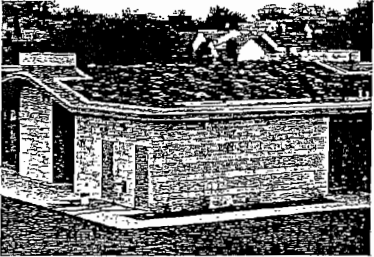


*Grading Plan
Fallon Sports Park
Dublin, CA*

PART I. QUALIFICATIONS



Total consensus is most frequently only a utopian dream in participatory endeavors. However, the very highest achievable level of **agreement is attainable** because participants work with each other toward this goal. They are assisted by the professional design team in processes of testing, synthesis, and selection of the most appropriate approaches to their future. If individuals do not always get 100% of what they want, they understand and accept this, because they were included as part of the participatory planning process. People move from hands-on creativity, to agreement and understanding, to achieving implemented results that serve the community not just themselves.



Restroom With Living Roof

PHASE B Design Phase

Carducci & Associates, Inc. will incorporate design review comments from the city staff, stakeholders, Parks and Recreation Commission, City Council, and the community into the Design Development drawings. This phase will elaborate on final conceptual plan refinement and include the **specifications of materials and plant palette**, definition and illustration of key design elements, including details, sections and elevations, as well as a more detailed project cost estimate.

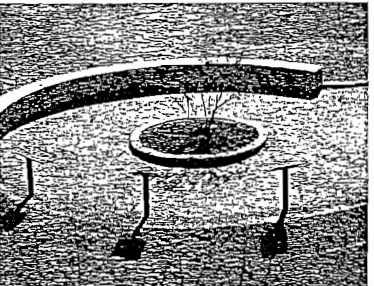
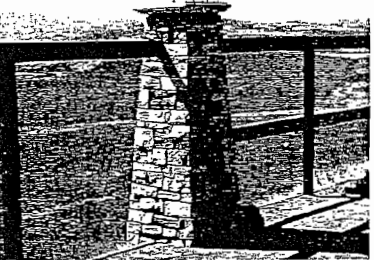
Construction Documents / Bid Package

With city approval of the Design Development plans and environmental review package (under separate contract), Carducci & Associates, Inc. will prepare a bid package including specifications, drawings, and a construction budget sufficient to allow the city to obtain responsible bids. In order to provide review of documents in process, progress sets of drawings and specifications will be **submitted to the city at 35%, 65%, and 95%, as well as the 100% set for project bid** and be consistent with the City of South San Francisco Park Standards.

Our work will include **constructability reviews** by our construction management consultant and professional peer in order to develop a high quality set of biddable and constructible documents.

The Construction Documents documents will include:

- a. Existing Conditions Plan (Survey).
- b. Reference Drawings of adjacent development and previous park improvements as applicable.
- c. Demolition/Salvage Plan.
- d. Overall Site Plan.
- e. Scope of Work Plan, including sustainability strategies.
- f. Erosion Control Plan: Detailed plan identifying erosion control during construction (per newest regulation of 2010).
- g. Layout Plan: Detailed horizontal control plan and related details, identifying materials and their location.
- h. Grading and Drainage Plan with Civil Engineer: Detailed vertical control plan and related details. Drainage plans for on-site filtration and off-site release.
- i. Calculate estimated water runoff and drainage capacity.
- j. Construction Details: Detailed construction and material information.
- k. Planting Plan: Detailed planting plans for areas developed within the contract limits, including botanical names, common names, sizes and related details.
- l. Landscape Irrigation Plan and Details: Detailed layout of sprinkler heads, piping and valves to provide a total operative system.
- m. Site Electrical Plans and Details: Detailed electrical design, calculations, and details.



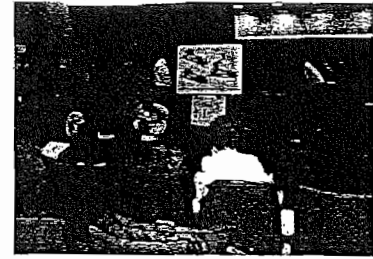
PART I. QUALIFICATIONS

- n. Specifications: Final specifications for aforementioned work will be in CSI Format.
- o. Cost evaluation for improvements within the project scope based on our best opinion of costs at the date of the estimate.

PHASE C

Bidding

Carducci & Associates, Inc. will assist city staff during the bidding process with a mandatory pre-bid walk-through, by answering bidder questions, providing addenda as required, and reviewing bids once received.



*Almaden Lake Park Community Meeting
San Jose, CA*

PHASE D

Construction Administration

Carducci & Associates, Inc. will provide the city staff with **support as required**, including site reviews, construction observation, response to RFI, preparation of ASI, submittal and material reviews, preparation of change orders, punch lists, and additional assistance to city staff to ensure successful implementation of the Construction Documents.



Full construction administration services is an optional additional service, which would include management of contractor and city contract for construction processing payroll, RFI's, change orders, and recommendations for a successful project.

PHASE E

Close Out

Carducci & Associates will provide a final punch list, as-builts, and record drawings.



*Mountain View Child Care Center
Mountain View, CA*

e. PRINCIPAL STAFF AND SUPPORT

Our in-house team includes **Vince Lattanzio** and **William Fee** as principals in collaboration for design and project management. Vince will be involved in contractual issues, public presentations, community design process and overall quality control. Bill will assist with design and the community design process. **Bill Fee will lead the construction document phase with Vince's ongoing support and involvement.**

Yi Jin Kim, Associate, will prepare the drawings.

David Spease will serve as the Certified Playground Safety Inspector.

Bohley Consulting and **Zeiger Engineers** have worked with us extensively and successfully and we believe our combined experience will prove to be important and valuable to the City of Sausalito and the successful rehabilitation of Robin Sweeney Park. We have a deep level of commitment and passion for this project.





f. WORK HISTORY

VINCENT P. LATTANZIO, Principal, is the Partner-in-Charge of urban planning and design. Vincent Lattanzio brings 30 years of experience as a landscape architect and project manager. After completing an urban design Fulbright Scholarship study in Greece and five years of experience with a nationally recognized design firm, he obtained a master's degree with distinction from Harvard University. His expertise in providing unique and appropriate design for park and recreation facilities is enhanced by his environmental background and community planning experience. His ability to design inspiring, sustainable projects adds unique value to his role as project landscape architect. He works closely with the staff and the community while focusing on budget and time constraints.

Professional Qualifications

Registered Landscape Architect, State of California, #2554 (1985)

Education

Master of Landscape Architecture with distinction
 Harvard Graduate School of Design Cambridge, Massachusetts
 Bachelor of Landscape Architecture
 SUNY College of Environmental Science & Forestry, Syracuse, New York

Relevant Awards

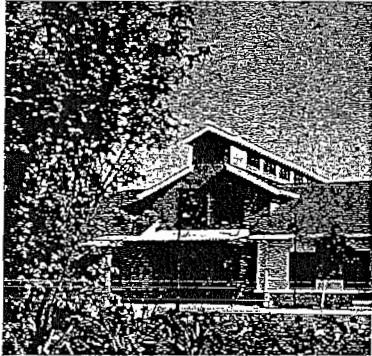
Leroy F. Green Award of Merit, San Mateo High School Reconstruction
 Sustainable San Mateo County: Green Building Award, Portola Valley
 American Green Building Award, El Cerrito City Hall
 Green Ribbon Environmental Award
 San Francisco Beautiful Award
 Builder Magazine Mixed Use Award

Associations & Memberships

American Society of Landscape Architects (ASLA)
 American Sports Builders Association (ASBA)
 Sports Turf Managers Association

Relevant Experience

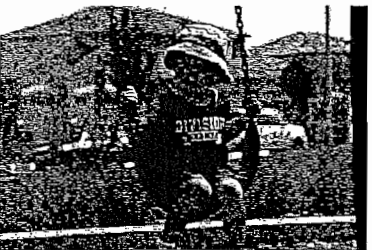
- Giorgi Park, Healdsburg, California
- Julius Kahn Playground, San Francisco, California
- Brandeis Hillel Day School Play Area, San Rafael, California
- Pixar Childcare, Berkeley, California
- Stanford Childcare, Stanford University, Palo Alto, California
- Family Early Learning Center, San Jose, California
- Pickleweed Park Renovation, San Rafael, California
- Mountain View Child Care, Mountain View, California
- Mayfair Community Center and Park, San Jose, California
- Huntington Park, San Francisco, California
- Brenda Lopez Plaza, San Jose, California
- Fallon Sports Park, Dublin, California
- Emerald Glen Park Master Plan, Dublin, California
- Public Safety Facilities, Sausalito, California
- Veterans Affairs Research Center, Sausalito, California
- Pleasant Hill City Hall, Pleasant Hill, California
- El Cerrito City Hall, El Cerrito, California
- Dublin Library and Park, Dublin, California
- Portola Valley Town Center, Portola Valley, California
- Hamilton Community Park, Novato, California



*Livermore Community Center
 Livermore, CA*



*Giorgi Park
 Healdsburg, CA*



*Aldo Pineschi Sr. Park
 Roseville, CA*

PART I. QUALIFICATIONS

WILLIAM E. FEE, Principal, has more than 30 years of experience in landscape architecture, master planning, and irrigation design. Before joining Carducci & Associates, Inc., he was a principal at an internationally recognized design firm. Bill brings an attention to detail to the creative process and sets great importance on environmental appropriateness and sense of place. He is an expert in the master planning and design of park landscapes, irrigation design, irrigation renovation, play and picnic areas, and the design of restroom buildings. He is also a certified planner.

Professional Qualifications

Registered Landscape Architect, State of California, #2537 (1985)
American Institute of Certified Planners (AICP) #12101
Certified Irrigation Auditor
Instructor of Landscape Architecture, UC Berkeley Extension (1988-1995)

Education

Bachelor of Science (Environmental Studies) and Bachelor of Landscape Architecture,
College of Environmental Science & Forestry, Syracuse, New York

Relevant Awards

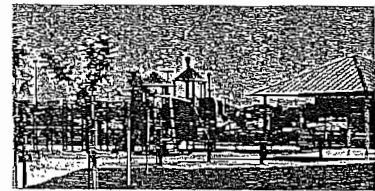
ASLA Merit Award, Oceanside Water Pollution Control Plant, San Francisco
Parks & Recreation Society: Excellence in Park Planning, Wanish Park
National AIA/COTS Top Ten Green Projects, Green Portola Valley Town Center
Sustainable San Mateo County Green Building Award, Portola Valley Town Center

Associations & Memberships

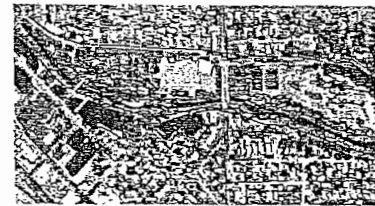
American Society of Landscape Architects (ASLA)
American Sports Builders Association (ASBA)
American Institute of Certified Planners (AICP)
Sports Turf Managers Association
American Planning Association

Relevant Experience

- Central Park, Roseville, California
- Royer Park, Roseville, California
- Emerald Glen Park Phase 2, Dublin, California
- Emerald Glen Park Phase 3, Dublin, California
- Emerald Glen Park Master Plan, Dublin, California
- Mayfair Community Center and Park, San Jose, California
- Aldo Pineschi, Sr. Park, Roseville, California
- Millbrae Fields Renovation, Millbrae, California
- Livermore Community Center, Livermore, California
- Fallon Sports Park, Dublin, California
- Rossotti Field, Portola Valley, California
- Bill Santucci Park, Roseville, California
- Kaseberg Park, Roseville, California
- Wanish Park, Roseville, California
- Dublin Sports Grounds, Dublin, California
- El Cerrito City Hall, El Cerrito, California
- Brenda Lopez Memorial Plaza, San Jose, California
- Portola Valley Town Center, Portola Valley, California
- Helen Diller Family Play Area at the Julius Kahn Playground, San Francisco, California
- Six high school renovations, San Mateo, Burlingame, Millbrae, and San Bruno, California
- Maidu Regional Park Master Plan, Roseville, California
- Eastside Reservoir Recreation Area, Hemet, California
- Roseville Town Square, Roseville, California



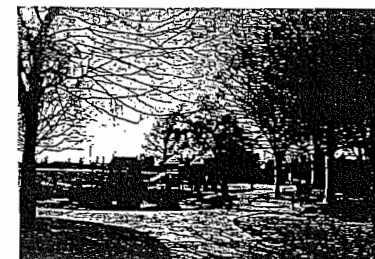
*Bill Santucci Park
Roseville, CA*



*Royer/Saugstad Park Master Plan
Roseville, CA*

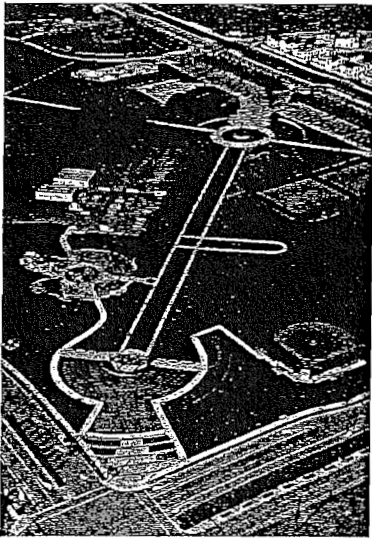


*Maidu Regional Park
Roseville, CA*



*Wanish Park
Roseville, CA*

PART I. QUALIFICATIONS



Yi Jin Kim, Associate and Designer Received a Bachelor of Science degree in Landscape Architecture from California State Polytechnic, University of Pomona, California. She has a broad and thorough understanding of master planing, schematic design, design development, construction documentation and administration, and park design. Her projects in the last five years include Emerald Glen Park, Phase 2 and 3, Dublin Transit Center, Bill Stantucci Park, Fallon Sports Park, Central Park, Aldo Pineschi, Sr. Park, and Royer Park in Roseville, California.

Professional Qualifications

Bachelor of Science, Landscape Architecture, California State Polytechnic, University of Pomona, California

Relevant Experience

- Emerald Glen Park Phase 2, Dublin, California
- Emerald Glen Park Phase 3, Dublin, California
- Central Park, Roseville, California
- Aldo Pineschi, Sr., Roseville, California
- Fallon Sports Park, Dublin, California
- Bill Stantucci Park, Roseville, California

*Emerald Glen Park
Dublin, CA*



Relevant Awards

Sustainable San Mateo County: Green Building Award, Portola Valley Town Center

David Spease is a National Playground Safety Institute Instructor for the Certified Playground Safety Inspector Course. He specializes in Playground Improvement Plan Review, Initial Playground Safety Inspection, Frequent Playground Safety Inspection Programs, ASA Site Inspections and interpretive exhibit consultation.

Professional Qualifications

California Registered Landscape Architect, #1284
 NPSI Certified Playground Safety Inspector, #15055-1012
 California Licensed Contractor, #783247 A, B, C-27

*Portola Valley Town Center
Portola Calley, CA*



*Drake High School
San Anselmo, CA*



*Green Bathroom
Concept Image*

National Recreation and Park Association

Let it be known that

DAVID SPEASE

has met the requirements of the standards set forth by the National Certification Board and National Playground Safety Institute Executive Committee and is hereby granted certification as a

Certified Playground Safety Inspector

Walter J. Fabel
 Chairperson, NPSI Executive Committee

Barbara Tulipone
 NRPA Chief Executive Officer



9/30/2009	Date Certified
15055-1012	Certification Number
10/1/2012	Expiration Date



PART I. QUALIFICATIONS

g. SIMILAR PROJECTS

Carducci & Associates, Inc. has over 40 years of local experience working on park facility Master Plans and construction documents. We serve as the prime consultant on many of our park projects, working directly with the client and in close collaboration with our consultant team and the community. Our ability to work closely, maintain availability and coordinate effectively with our team as well as our clients and local communities has resulted in a number of successful projects that exceeded our clients expectation, including the following:

Giorgi Park Master Plan – Healdsburg, CA

The master plan of this 5-acre site includes a custom art play area, parking with biofiltration new restrooms, and public art.

Client: City of Healdsburg

Scope of Work: Carducci & Associates, Inc. provided a master plan and construction documents, including cost estimates. Carducci & Associates, Inc. worked extensively through a public input process to produce several conceptual master plans for the rehabilitation, including creating an entry, circulation, picnic areas and unique art playgrounds. The park is the pride and joy of the city!

Project Manager: Matthew Thompson, Park Superintendent /Arborist, City of Healdsburg, office: (707) 431-3384 or cell: (707) 477-9057

Reference: David Mickaelian, Community Services Director, City of Healdsburg, (707) 431-3301



Giorgi Park Master Plan
Healdsburg, CA

Mayfair Community Center - San Jose, CA

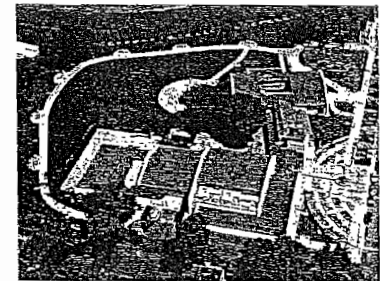
The 22,000-square-foot Mayfair Community Center is surrounded by an eight-acre park and features a succulent garden at the entry plaza, shaded ADA compliant playground and picnic areas, and a water play area. The landscape has been awarded the LEED® certification for environmental sensitivity and sustainability.

Client: City of San Jose

Scope of Work: Full landscape architecture services

Project Manager: Mark Schatz, Architect, Field Paoli, (415) 788-6606

Reference: Evelyn Velez-Rosario, Parks Manager, City of San Jose, (408) 793-5552



Mayfair Community Center
San Jose, CA

Helen Diller Family Play Area at Julius Kahn Playground - San Francisco, CA

People have come from all around the Bay Area to visit and play in what is considered as the "most successful playground" in the Bay Area. Carducci & Associates developed the historic park renovation for the Helen Diller Family Foundation in coordination with the Presidio, Friends of Recreation & Parks and the City of San Francisco Parks and Recreation Department. The goal of the project was to create a playground that is a "Parisian" expression of style that would be comfortable to all ages and cultures. The park incorporates custom-designed fencing, nature-imprinted paving, water play sculpture, innovative play equipment and a unique historic setting respected in the design and use of materials.

Awarded an ASLA Merit Award for Design, April 2004

Client: Helen Diller Foundation, SF Rec & Parks, Friends of Rec & Parks.

Scope of Work: Project Designer & Facilitator at multiple neighborhood and agency approvals in community workshops completed in under 60 days with project construction under 3 months. Also provided complete construction management for the project.

Project Manager: Vince Lattanzio, Principal, Carducci & Associates, (415) 674-0990

Reference: Jackie Safir, Diller Foundation, (650) 245-1404

Reference: Lizzy Hirsch, Project Director, SF Rec & Parks, (415) 581-2551

Reference: Curt Wear, Community Playgrounds, (415) 559-8883



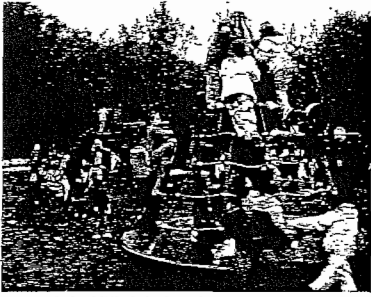
Water Play at Mayfair Community
Center
San Jose, CA

Brandeis Hillel School - San Rafael, CA

Renovation of an existing playground and related improvements. The work includes synthetic turf, storm drainage, signs and pavement marking chain link fencing, ornamental fencing, railings, site concrete, concrete retaining walls and structural concrete, site furnishings and play equipment, stone work, pre-engineered shade structure, irrigation,



Water and Sand Play at Julius Kahn
Park
San Francisco, CA



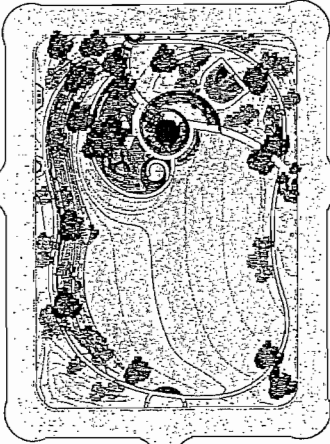
Brandeis Hillel School
San Rafael, CA

planting and planting establishment period, and decomposed granite paving.
Client: Brandeis Hillel Day School
Scope of Work: Project Landscape Architect
Project Manager: Vince Lattanzio, Carducci & Associates, (415) 447-5214
Reference: Michael Baumstein, Bernard Osher Marin JCC, Chief Operating Officer, (415) 444-8020

Aldo Pineschi Senior Park - Roseville, CA

This 4-acre neighborhood park includes curvilinear walkways that weave through the park and connect a covered picnic area, uncovered picnic tables, half court for basketball, children's swing area, a children's play area theme on a meteor crash site, bioswales and a multi-use turf meadow.

Client: City of Roseville
Scope of Work: Project Landscape Architect
Project Manager: Tara L Gee, Landscape Architect, City of Roseville, (916) 774-5246
Reference: Michael T. Shellito, Interim City Manager/Community Services Director, (916) 774-5131



Aldo Pineschi Senior Park
Roseville, CA

Central Park - Roseville, CA

This 22-acre community park is part of a 50-acre super-block that includes the 10-acre Park Plaza Retail Center and the 15-acre Thomas Jefferson Elementary School. Curvilinear walkways weave through the park and connect the shopping and school sites to the park. The central plaza of the park holds farmer's markets and has a water play area. The park facilities include an indoor-outdoor aquatic center with LEED Certification© and an interactive water feature, 2 youth softball fields, 1 full size soccer field, 1 multi-use field, 2 tennis courts, and 2 basketball courts, picnic areas, children's play areas, shade structures, walkways, path and sports lighting, restroom building, parking with biofiltration, irrigation and planting.

Client: City of Roseville
Scope of Work: Carducci & Associates provided full Landscape Architecture services.
Project Manager: Tara L Gee, Landscape Architect, City of Roseville, (916) 774-5246
Reference: Michael T. Shellito, Assistant City Manager/Community Services Director, (916) 774-5131

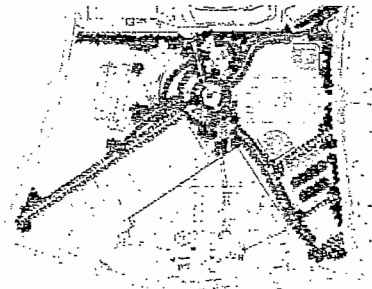


Aldo Pineschi Senior Park
Roseville, CA

Royer/Saugstad Park Master Plan Update - Roseville, CA

In collaboration with the Downtown Roseville Specific Plan, Carducci & Associates, Inc. developed a master plan for Royer/Saugstad Park. The master plan for the diverse, linear park increases connectivity with Downtown Roseville, by connecting the Civic Center and Town Square via a downtown bridge to Royer Park. Pedestrian bridges were upgraded and reoriented, and additional walking paths were created. Public enhancements included tree planting, creek restoration, relocation of tennis courts, and upgrading of the softball field, Dietrich Hall, and Cook Shack. Arts, culture, heritage, entertainment, and education were promoted through historical Roseville and natural history themes in signage, interpretive design, and public art. Connections, place-making, creek restoration, and flood conveyance were key components of the plan.

Client: City of Roseville
Scope of Work: Project Landscape Architect
Project Manager: Mark Brodeur, Director of Urban Revitalization, Downtown Solutions, (949) 489-1442
Project Manager: Kevin Payne, Assistant Director, City of Roseville, (916) 774-5276
Reference: Michael T. Shellito, Interim City Manager/Community Services Director, (916) 774-5131



Central Park
Roseville, CA

Pixar Childcare - Berkeley, California

New childcare facility for Pixar employees. Incorporated innovative play elements and an art fence designed, fabricated and installed by Carducci & Associates, Inc.
Client: Johnson Lyman Architects
Scope of Work: Full design thought construction services. Additionally required by the City, design and fabricated for California landscapes art fence.

PART I. QUALIFICATIONS

Project Manager: Cesar Lau, Associate, Carducci & Associates, (415) 447-5217
Reference: Fran Durekas, Founder and COO, Childrens' Creative Learning Centers, office: (408) 732-2500 Ext. 227 or cell: (408) 210-4235

Stanford University Childcare - Stanford, California

New childcare facility for student observation, research and training under the canopy of mature oak trees.

Client: Johnson Lyman Architects

Scope of Work: Full service design through construction with day care facility with nature based playground around mature Oak trees.

Project Manager: Vince Lattanzio, Principal, Carducci & Associates, (415) 674-0990

Reference: Fran Durekas, Founder and COO, Childrens' Creative Learning Centers, office: (408) 732-2500 Ext. 227 or cell: (408) 210-4235

Mountain View Childcare - Mountain View, California

Carducci & Associates helped design the City of Mountain View Child Care Center to provide high-quality child care services and activities to its residents. We visited the site, provided a mitigation plan and communicated our concerns related to the existing trees and impacts from construction. We developed a strong working relationships with the City, Public Works, and the contractors to design the best optimal play areas for the users. The center provides care to children 6 weeks to 5 years of age.

Client: City of Mountain View

Scope of Work: Full service design through construction for a day care, public park for tot/ 5-12 year old play area with focus on nature play and water playscapes and music pay deck build around a Heritage Oak tree.

Project Manager: Fred Fallah, City of Mountain View PW, (650) 903-6528

Emerald Glen Park Master Plan, Phase II and III - Dublin CA

The 50-acre park includes ballfields, soccer fields, corporate yard, street improvements, picnic areas, a gateway water feature including an art piece, and parking. Final phases may include a 24,000 square foot Aquatic Center and possibly a 24,000 square foot Community Center. We also provided extensive improvements to the Phase I project irrigation system to provide for necessary maintenance improvements. The project involved a very successful community process, meetings, and public workshops to vote on the various park features and establish a final plan with public support.

Client: City of Dublin, Parks & Facilities

Scope of Work: Prime consultant for all work including coordination with artist. Update the master plan for the Emerald Glen Park and completed Phase 2 and Phase 3 development through construction.

Project Manager: Rosemary Alex, Parks and Facilities Development Coordinator, City of Dublin, (925) 833-6646

Reference: Herma Lichtenstein, City of Dublin, Parks & Facilities Development Manager, (925) 833-6672

Bill Santucci Park - Roseville, CA

12-acre sports park adjacent to a new elementary school includes: a tot lot area, basketball courts, picnic areas, softball fields, soccer fields, and perimeter walking path around a detention basin.

Client: The City of Roseville, Parks and Recreation Department

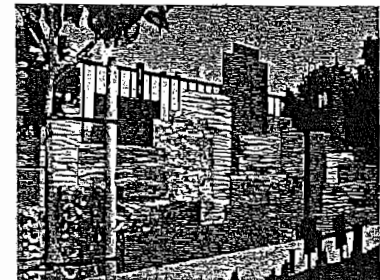
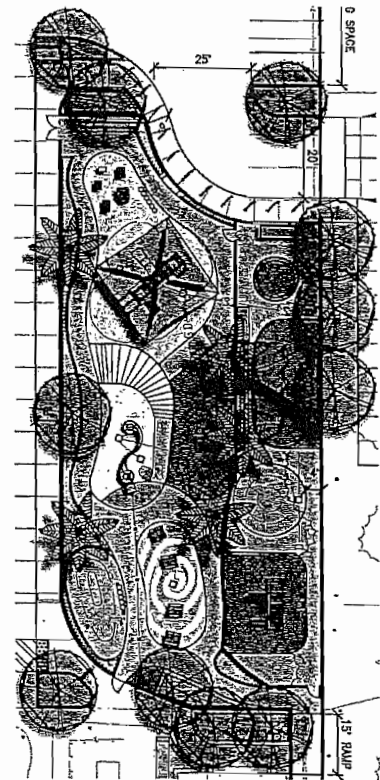
Scope of Work: Carducci & Associates was the Project Landscape Architect.

Project Manager: Bill Fee, Principal, Carducci & Associates, (415) 674-0990

Reference: Michael T. Shellito, Interim City Manager/Community Services Director, (916) 774-5131

Rossotti Field - Portola Valley, CA

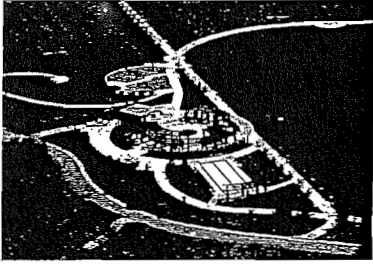
This master plan was developed through construction administration for the renovations of soccer field that including grading and special soil preparation. Other features included in the project are a sand drainage system, irrigation system, turf planting, tree planting, pathways, fencing, parking, and bioswales.



Pixar Childacre
Berkeley, CA



Mountain View Childcare Art Gate
Mountain View, CA



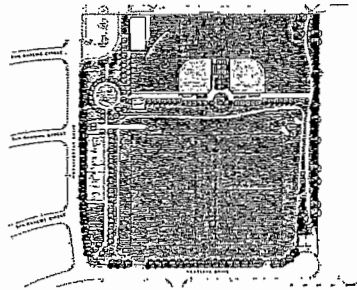
*Emerald Glen Park
Dublin, CA*

Client: The Town of Portola Valley, Department of Public Works
 Scope of Work: Carducci & Associates was the Project Landscape Architect.
 Project Manager: Bill Fee, Principal, Carducci & Associates, (415) 674-0990
 Reference: Howard Young, Public Works Director, Town of Portola Valley, (650) 851-1700

Huntington Park - San Francisco, CA

Respect for the historic park and neighborhood, attention to the weather, health, safety and accessibility were important to the renovation design of the park playground. The play space incorporates a cathedral theme in the play structure design. The ground plane of rubber and artificial turf play surfaces emphasize safety and allow the play area to match the surrounding brick, concrete, and grass areas, while minimizing surface maintenance. The play surfaces dry quickly, maximizing use and mitigating the foggy conditions.

Client: Nob Hill Association
 Scope of Work: Project Landscape Architect - Prepared the design of children's playground.
 Project Manager: Vince Lattanzio, Principal, Carducci & Associates, (415) 674-0990
 Reference: Lizzy Hirsch, Project Director, SF Rec & Parks, (415) 581-2551



*Bill Santucci Park
Roseville, CA*

Fallon Sports Park

New 60-acre community-envisioned master plan for a sports park located on fallow farm land in the fast-growing outer edges of the City of Dublin.

Client: City of Dublin, Parks & Community Services Department
 Scope of Work: Led focus groups and prepared conceptual design report, master plan, grading plan, sports lighting impact, design guidelines and cost estimate.
 Project Manager: Rosemary Alex, Parks and Facilities Development Coordinator, City of Dublin, (925) 833-6646
 Reference: Herma Lichtenstein, City of Dublin, Parks & Facilities Development Manager, (925) 833-6672

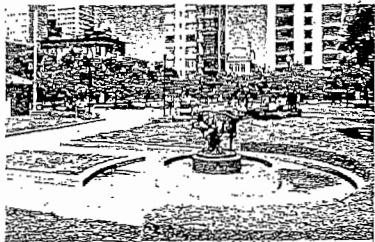


*Rossotti Field
Portola Valley, CA*

Dublin Sports Fields - Dublin, CA

Carducci & Associates Inc. provided services to the City of Dublin for the renovation of an existing playground and soccer fields. Eight acres of a 26-acre park that included grading and drainage, irrigation, turf planting, tree planting and bioswales.

Client: City of Dublin, Parks & Facilities
 Scope of Work: Project Landscape Architect - Prepared the design of drainage, irrigation, sports lighting, sports turf, children's playground and picnic area.
 Project Manager: Rosemary Alex, Parks and Facilities Development Coordinator, City of Dublin, (925) 833-6646
 Reference: Herma Lichtenstein, City of Dublin, Parks & Facilities Development Manager, (925) 833-6672



Portola Valley Town Center - Portola Valley, CA

The landscaping strategy employed in the Portola Valley Town Center used all native plant species grouped by landscape type and water use needs. This approach created a beautiful, healthy, low maintenance, and ecologically sound landscape. Carducci & Associates was hired to design the athletic facilities and irrigation for the Portola Valley Town Center. As part of the LEED accreditation we also provided the efficiency analysis for the irrigation design.

Client: Town of Portola Valley
 Scope of Work: Landscape Architect for athletic facilities, irrigation design and LEED Certification©
 Project Manager: Larry Strain, Principal, Siegel & Strain Architects, (510) 547-8092 Ext. 103
 Reference: Howard Young, Public Works Director, (650) 851-1700 Ext. 14
 Project Manager:
 Reference: Larry Strain, Siegel & Strain Architects, (510) 547-8092 Ext. 103

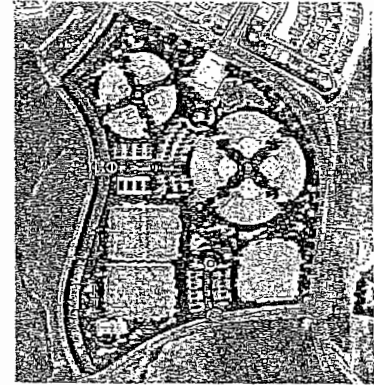


*Huntington Park
San Francisco, CA*

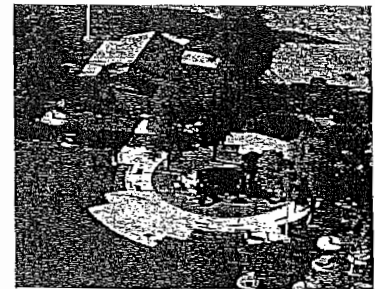
PART I. QUALIFICATIONS

Estimated Cost Vs. Bid Received

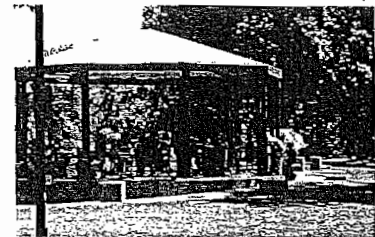
Project	Estimated Cost	Bid Received
Giorgi Park	\$1.2 Million	\$1.2 Million
Mayfair Community Center	\$22 Million	\$14.8 Million
Helen Diller Family Play Area	\$800,000	\$800,000
Almaden Lake Park	\$1.8 Million	\$1.5 Million
Aldo Pineschi, Sr. Park	\$867,000	\$850,000
Royer/Saugstad Park - Phase I	\$3 Million	\$3 Million
Pixar Childcare	\$580,000	\$570,000
Stanford University Childcare	\$460,000	\$450,000
Mountain Vew Childcare	\$500,000	\$515,000
Central Park	\$1,002,000	\$952,951
Emerald Glen Park - Phase II	\$2.4 Million	\$2 Million
Emerald Glen Park - Phase III	\$3.5 Million	\$3.5 Million
Bill Santucci Park	\$1.5 Million	\$1.1 Million
Rossotti Field	\$450,000	\$400,000
Huntinton Park	\$500,000	N/A (not built)
Fallon Sports Park - Phase I	\$11.5 Million	\$9.5 Million
Dublin Sports Fields	\$785,000	\$795,000
Portola Valley Town Center	\$1,250,000	\$1,250,000



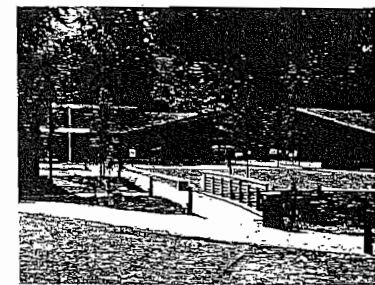
Fallon Sports Park
Dublin, CA



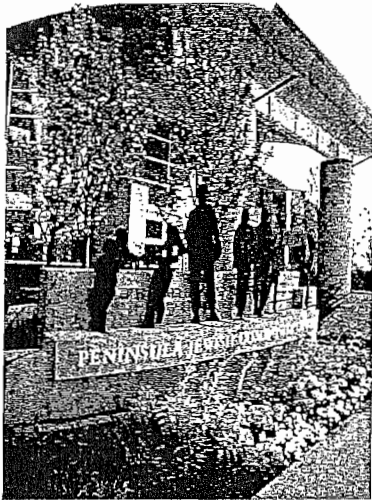
Dublin Sports Fields
Dublin, CA



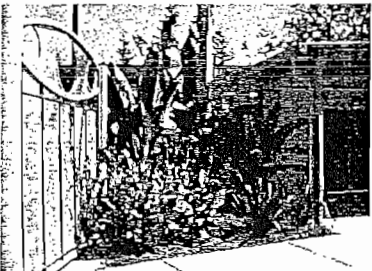
Stage at Royer-Saugstad Park
Roseville, CA



Portola Valley Town Center
Portola Valley, CA



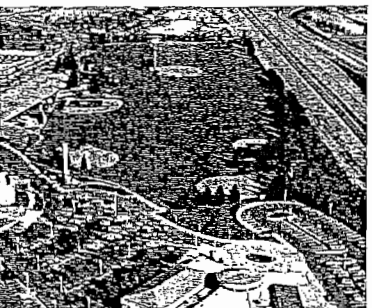
Peninsula Jewish Community Center
Foster City, CA



Early Learning Family Center
San Jose, CA



Aldo Pineschi Senior Park
Roseville, CA



Dublin Sports Field
Dublin, CA

h. PROJECT ADMINISTRATION

Quality Control System

We use a systematic cost and quality control system.

The process is based on the premise that **work done right is work that has been systematically developed and reviewed.** We recognize that this approach holds the key to cost containment. It is crucial to cost and quality control to minimize errors and omissions in contract documents. The key to that, especially when working within multidisciplinary project teams, is a schedule of systematic quality control checks during each phase of project design.

We use a **triple-check system** to obtain accuracy and comprehensiveness in this process. A principal who oversees the work and signs all contract documents leads each project undertaken by the firm. A project manager is also assigned to each project and is someone chosen from the principal or associate level for his or her management skills and his or her experience with projects of a similar nature. **The principal is responsible for day-to-day contact with the client and for communications within the project team.** That person manages each project through each phase of the design process, coordinating in-house staff and subconsultants.

The following **minimum actions** are to be taken to ensure delivery of a quality product to the client.

1. Meet with the project team to **scope the work and project schedule.** Project manager to record meeting minutes and issue to the project team. All questions or comments by team members regarding the meeting minutes are to be directed to the project manager by the required date.
2. At each quality control milestone, team members provide the project manager with a reproducible set of their design/contract documents, after which a "quality control set" compiled from all design disciplines, along with a quality control checklist, will be distributed to team members for **quality control review.**
3. Team members to **record notations on the documents in red,** complete the quality control checklist, and return both, along with additional comment sheets as necessary, to the project manager at the required time.
4. A copy of the entire quality control checklist and comment sheets will be returned to the various team members along with their portion of the documents containing "**red line**" comments by other team members.
5. Each comment to be acknowledged and acted upon shall be highlighted with a **yellow felt tip pen to denote action completion.** On separate 8-1/2" x 11" sheets, list any comments, which are not acted upon and explain why. Return the list to the quality control manager in a timely manner so that further action can be taken and the project schedule still maintained.
6. **Comments received from the client** will be addressed with as described above. Return all marked drawing and comment sheets to the quality control manager as scheduled. Written comments not complied with shall be listed and an explanation given for noncompliance.
7. All quality control comments are **kept on file** until final acceptance and contract completion.

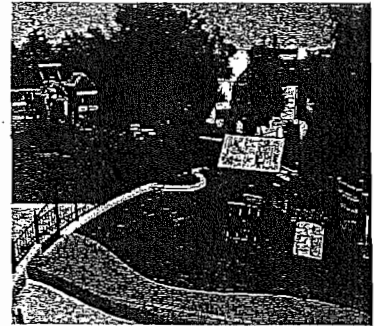
PART I. QUALIFICATIONS

8. All team members are required to maintain an up-to-date central file system of all correspondence and documents regarding the project.

Carducci & Associates, Inc. will communicate and coordinate with city staff and relevant public agencies in order to provide information needed to assist city staff in obtaining the necessary permits and approvals for the project.

I. DECLARATION OF NONAFFILIATION

Under penalty of perjury, Carducci & Associates is not affiliated with, nor has any financial interest in, any manufacturer, distributor, supplier or other company connected with Carducci & Associates' recommendation and/or installation of any products or services as required by the City.



*Presidio Heights Playground
San Francisco, CA*



*Brandeis Hillel School
San Rafael, CA*



J. SUBCONSULTANTS

BOHLEY CONSULTING

1875 SOUTH GRANT STREET, SUITE 550
SAN MATEO, CA 94402
650-358-1484 • FAX 650-358-1487

PETER R. BOHLEY, Principal

Pete Bohley has over forty years of experience in civil engineering, extending from conceptual planning studies through design, contract administration and construction management. Pete specializes in preparing and processing permits through various public agencies and assisting clients in the development of difficult project sites.

Education

Bachelor of Science in Civil Engineering, San Jose State University

Registration

Professional Civil Engineer, California, No. 19,052
Professional Civil Engineer, Alaska, No. 6,313

Affiliations

Peninsula Association of Contractors and Engineers, Past President
Peninsula Water Works Association, Past President
Peninsula Water Agency, Past Executive Officer
Consulting Engineers and Land Surveyors of California, Peninsula Chapter - Past President

Employment

1991 - Present Bohley Consulting, Inc., Principal/President
1979 - 1991 Brian Kangas Foulk, Principal/Vice President
1967 - 1979 San Mateo County Dept. of Public Works, Senior Civil Engineer
1965 - 1967 U.S. Peace Corps, West Pakistan

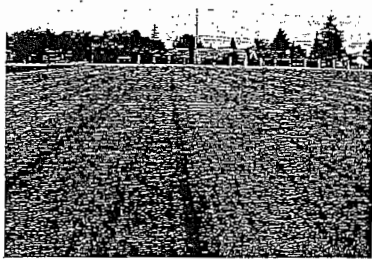
Professional Experience

Pete has worked as an integral part of our design team over the past fifteen years and has specifically provided excellent civil engineering services for over a dozen park related projects in the past five years.

Pete has provided engineering expertise for a wide variety of projects located in varied environments. Some representative projects that Pete has been responsible for include the following:

Redwood Shores Peninsula, Redwood City, CA

For almost twenty years, Pete Bohley provided master planning, conceptual site development, design, and construction administration services for the Redwood Shores development. During this period, Pete supervised a staff of up to twenty engineers and surveyors in the preparation of plans, specifications and construction cost estimates for over nineteen storm and sewer pump stations, miles of roads, levees, storm drain lines, pressure and gravity sewer mains, waterlines, and related subdivision improvements.



*Hillsdale High School
San Mateo, CA*



*Drake High School
Marin County, CA*



*Redwood Shores
Redwood City, CA*



*Rossetti Field
Portola Valley, CA*

PART I. QUALIFICATIONS



ZEIGER ENGINEERS, INC.

478 3RD STREET, OAKLAND, CALIFORNIA 94607

TEL: (510) 452-9391

FAX: (510) 452-0661

www.zeigerengineers.com

RONALD ZEIGER, P.E.
PRESIDENT, ZEIGER ENGINEERS, INC.

President of Zeiger Engineers Inc. for the past twenty-three years, Mr. Zeiger has been actively engaged in electrical engineering since 1965. His wide ranging experience includes work on park facilities, sport lighting, street lighting, schools, universities, research and industrial facilities, office buildings, hotels, housing projects, museums, theaters, churches, libraries, restaurants, community centers, and extensive experience in technology systems.

Over the last five years Ron has worked as a member of our design team on more than a dozen park related projects, adding another excellent, experienced, and creative problem solver to our consultant team.

EDUCATION

University of California at Berkeley - B.S. in Electrical Engineering, 1965

REGISTRATION

Professional Electrical Engineer, 1969, California, additional registration in Arizona, Colorado and Utah

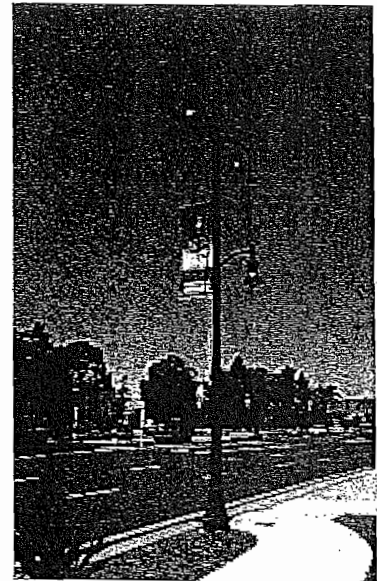
License No. E7218, (exp 9/30/10)

PROFESSIONAL ACTIVITIES

Institute of Electrical and Electronics Engineers
Illuminating Engineering Society

PROJECT EXPERIENCE

- South Sunset Playground, fully lighted sports facility with three soccer fields with overlay of two baseball fields, San Francisco
- Kimbell Playground, fully lighted sports facility with three soccer fields with three baseball fields, San Francisco
- Gilman Street Sports Facilities, fully lighted sports facility with two soccer fields, two softball fields and one baseball field, Berkeley
- Crocker-Amazon Soccer Complex, fully lighted sports facility with six soccer fields, concession/ restroom building and maintenance building, San Francisco
- Soccer Complex, eight soccer fields (six lighted, two future lighted, concession/restroom and maintenance facilities, lighted parking areas, Stockton
- Healdsburg High School Sports Facility, lighting for running track, soccer, six tennis courts and three softball/baseball fields, Healdsburg
- Heather Farm Park, fully lighted sports complex with soccer fields, ten tennis courts and softball field, concession and restroom, parking areas, Walnut Creek
- Mt. Eden Sports Facility, full lighted sports facility with four baseball fields, two soccer fields, and baseball courts, Hayward



PART I. QUALIFICATIONS

K. LAWSUITS

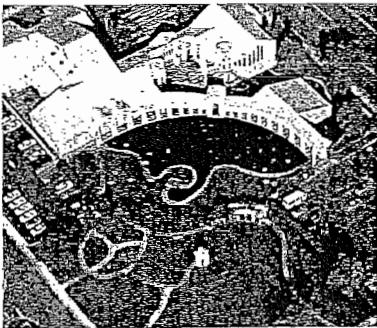
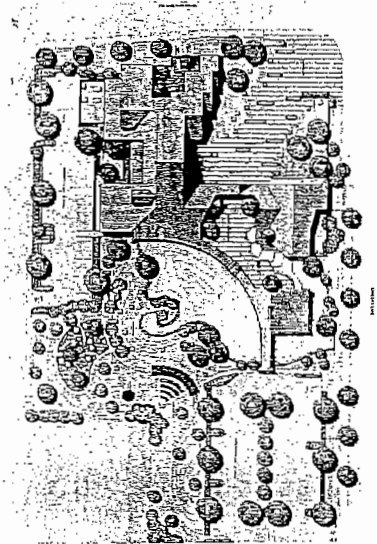
NOT APPLICABLE

I. LOCATION OF OFFICE WORK

555 Beach Street, 4th Floor, San Francisco, CA 94133

m. INSURANCE

Below is a copy of a sample certificate of insurance



Pleasant Hill City Hall
Pleasant Hill, CA



El Cerrito City Hall
El Cerrito, CA



Emerald Glen Park
Dublin, CA

Client#: 57 CARDUASSO

ACORD CERTIFICATE OF LIABILITY INSURANCE DATE (MM/DD/YY)
09/15/10

<p>PRODUCER Dealey, Renton & Associates P.O. Box 12675 Attn: KKC Oakland, CA 94604-2675 510 465-3090</p>	<p>THIS CERTIFICATE IS ISSUED AS A MATTER OF INFORMATION ONLY AND CONFERS NO RIGHTS UPON THE CERTIFICATE HOLDER. THIS CERTIFICATE DOES NOT AMEND, EXTEND OR ALTER THE COVERAGE AFFORDED BY THE POLICIES BELOW.</p> <p style="text-align: center;">INSURERS AFFORDING COVERAGE</p> <p>INSURER A: Hartford Casualty Insurance Co. INSURER B: Travelers Property Casualty Co. of A INSURER C: Evanston Insurance Company INSURER D: INSURER E:</p>
<p>INSURED Carducci & Associates, Inc. 555 Beach Street, 4th Floor San Francisco, CA 94133</p>	

COVERAGES

THE POLICIES OF INSURANCE LISTED BELOW HAVE BEEN ISSUED TO THE INSURED NAMED ABOVE FOR THE POLICY PERIOD INDICATED, NOTWITHSTANDING ANY REQUIREMENT, TERM OR CONDITION OF ANY CONTRACT OR OTHER DOCUMENT WITH RESPECT TO WHICH THIS CERTIFICATE MAY BE ISSUED OR MAY PERTAIN, THE INSURANCE AFFORDED BY THE POLICIES DESCRIBED HEREIN IS SUBJECT TO ALL THE TERMS, EXCLUSIONS AND CONDITIONS OF SUCH POLICIES. AGGREGATE LIMITS SHOWN MAY HAVE BEEN REDUCED BY PAID CLAIMS.

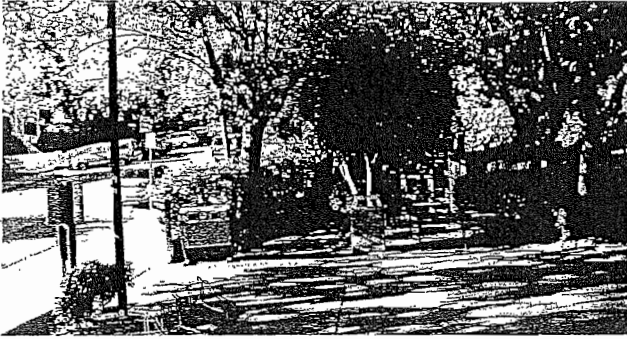
INSR LTR	TYPE OF INSURANCE	POLICY NUMBER	POLICY EFFECTIVE DATE (MM/DD/YY)	POLICY EXPIRATION DATE (MM/DD/YY)	LIMITS
A	<p>GENERAL LIABILITY</p> <p><input checked="" type="checkbox"/> COMMERCIAL GENERAL LIABILITY</p> <p><input type="checkbox"/> CLAIMS MADE <input checked="" type="checkbox"/> OCCUR</p> <p>GEN'L AGGREGATE LIMIT APPLIES PER: <input type="checkbox"/> PRO POLICY <input checked="" type="checkbox"/> LOC</p>	57SBAAU4156	05/05/10	05/05/11	<p>EACH OCCURRENCE \$2,000,000</p> <p>FIRE DAMAGE (Any one fire) \$500,000</p> <p>MED EXP (Any one person) \$10,000</p> <p>PERSONAL & ADV INJURY \$2,000,000</p> <p>GENERAL AGGREGATE \$4,000,000</p> <p>PRODUCTS - COMP/OP AGG \$4,000,000</p>
A	<p>AUTOMOBILE LIABILITY</p> <p><input type="checkbox"/> ANY AUTO</p> <p><input type="checkbox"/> ALL OWNED AUTOS</p> <p><input type="checkbox"/> SCHEDULED AUTOS</p> <p><input checked="" type="checkbox"/> HIRED AUTOS</p> <p><input checked="" type="checkbox"/> NON-OWNED AUTOS</p>	57SBAAU4156	05/05/10	05/05/11	<p>COMBINED SINGLE LIMIT (Ea accident) \$2,000,000</p> <p>BODILY INJURY (Per person) \$</p> <p>BODILY INJURY (Per accident) \$</p> <p>PROPERTY DAMAGE (Per accident) \$</p> <p>AUTO ONLY - EA ACCIDENT \$</p> <p>OTHER THAN AUTO ONLY: EA ACC \$</p> <p>AGG \$</p> <p>EACH OCCURRENCE \$</p> <p>AGGREGATE \$</p> <p>\$</p> <p>\$</p>
B	<p>WORKERS COMPENSATION AND EMPLOYERS' LIABILITY</p>	UB7082Y434	09/01/10	09/01/11	<p><input checked="" type="checkbox"/> TWO STATUTORY LIMITS <input type="checkbox"/> OTHER</p> <p>E.L. EACH ACCIDENT \$1,000,000</p> <p>E.L. DISEASE - EA EMPLOYEE \$1,000,000</p> <p>E.L. DISEASE - POLICY LIMIT \$1,000,000</p>
C	<p>OTHER Professional Liability</p>	AE818531	12/28/09	12/28/10	<p>\$1,000,000 per claim</p> <p>\$2,000,000 annl aggr.</p>

DESCRIPTION OF OPERATIONS/LOCATIONS/VEHICLES/EXCLUSIONS ADDED BY ENDORSEMENTS/SPECIAL PROVISIONS
 General Liability policy excludes claims arising out of the performance of professional services.
 FOR PROPOSALS PURPOSES ONLY

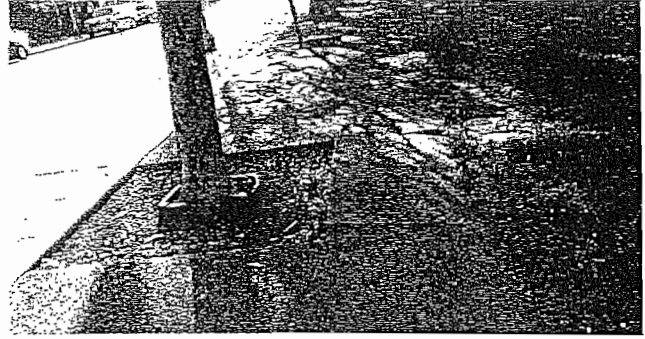
<p>CERTIFICATE HOLDER</p> <p style="text-align: center;">****SAMPLE****</p>	<p>ADDITIONAL INSURED-INSURER LETTER</p>	<p>CANCELLATION</p> <p>SHOULD ANY OF THE ABOVE DESCRIBED POLICIES BE CANCELLED BEFORE THE EXPIRATION DATE THEREOF, THE ISSUING INSURER WILL ENDEAVOR TO MAIL 30 DAYS WRITTEN NOTICE TO THE CERTIFICATE HOLDER NAMED TO THE LEFT, BUT FAILURE TO DO SO SHALL IMPOSE NO OBLIGATION OR LIABILITY OF ANY KIND UPON THE INSURER, ITS AGENTS OR REPRESENTATIVES.</p> <p>AUTHORIZED REPRESENTATIVE <i>Naomi M. Barrett</i></p>
---	--	--

ACORD 25-S (7/97) 1 of 1 #M274045 PBS © ACORD CORPORATION 1988

PART I. EXISTING CONDITIONS



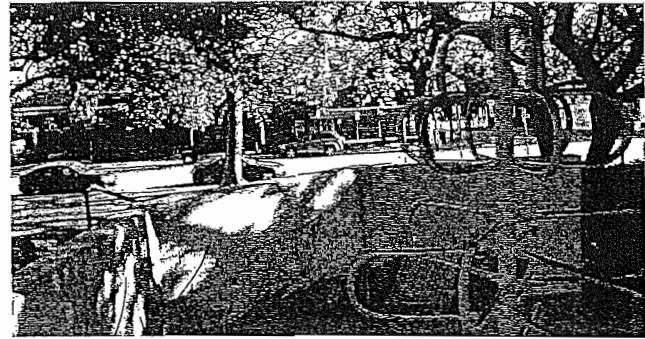
Update arrival experience by bike, stroller and foot.



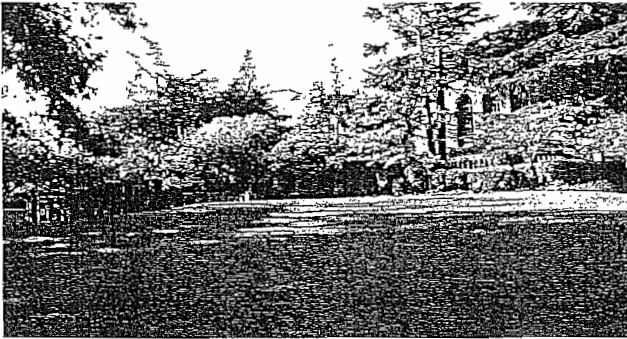
Free the trees and create a biofiltration stormwater treatment.



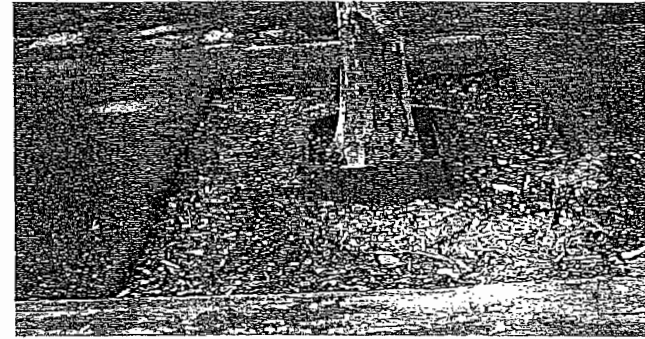
Respect the existing trees and open up access to new playground area.



Update play equipment.



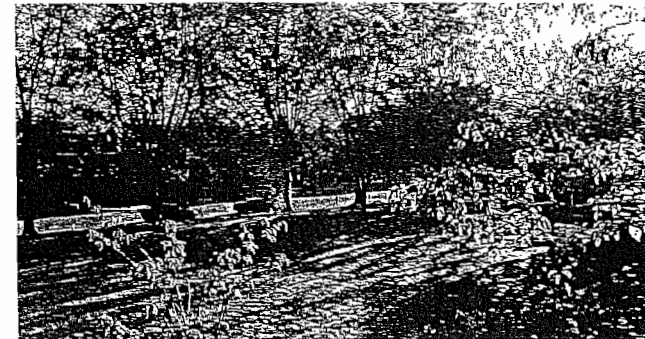
What a beautiful open space: Do not lose it.



Release me. Let me go.

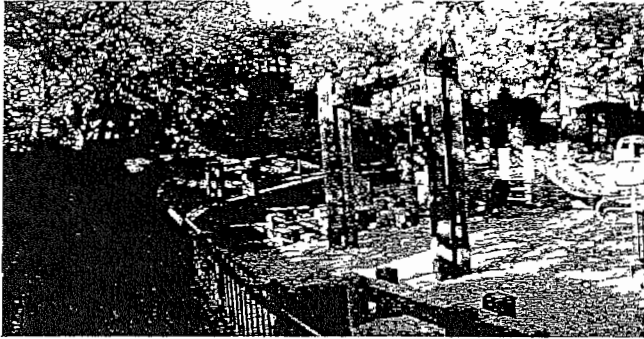


Provide ADA access from street corners.



Respect Sister City Cherry Trees and tell a story about the Sister City in the Park.

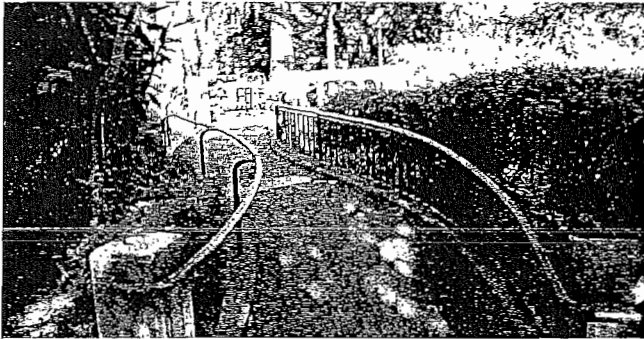
PART I. EXISTING CONDITIONS



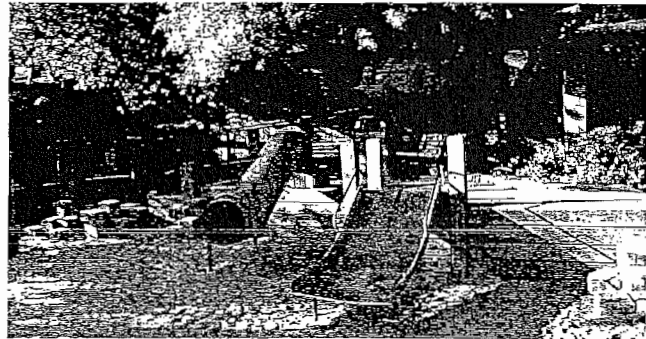
Create a new artful, fun, safe playground experience for all ages.



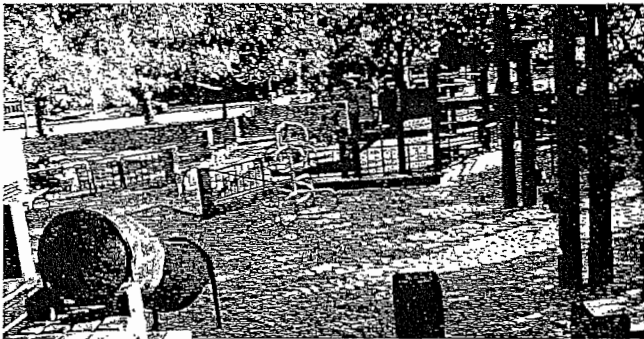
Imagine a playground that anyone can play in.



A ramp to nowhere serves no one.



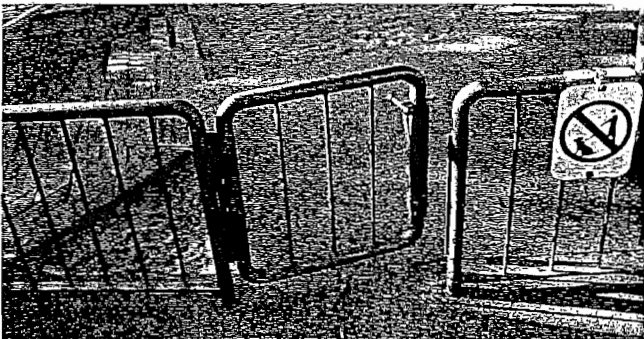
Where did my kid go?



A little sand in the sun is nice, update the play surface but relocate the Pelican.



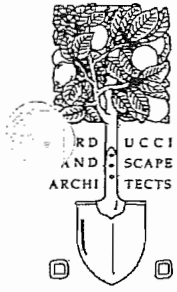
Understand the soils and deal with the settlement issues.



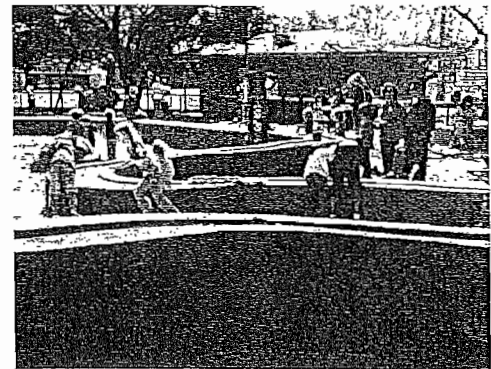
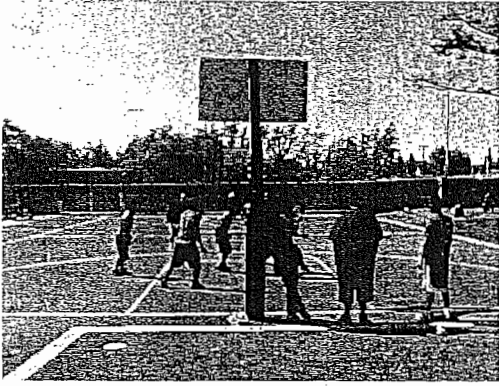
Improve access control security and make it beautiful.



This could be so beautiful. Plant a garden of fragrance and color.

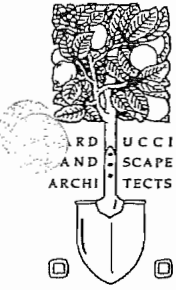


GIORGI PARK HEALDSBURG, CA

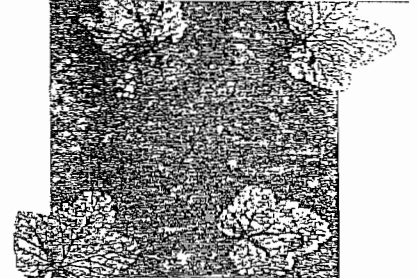
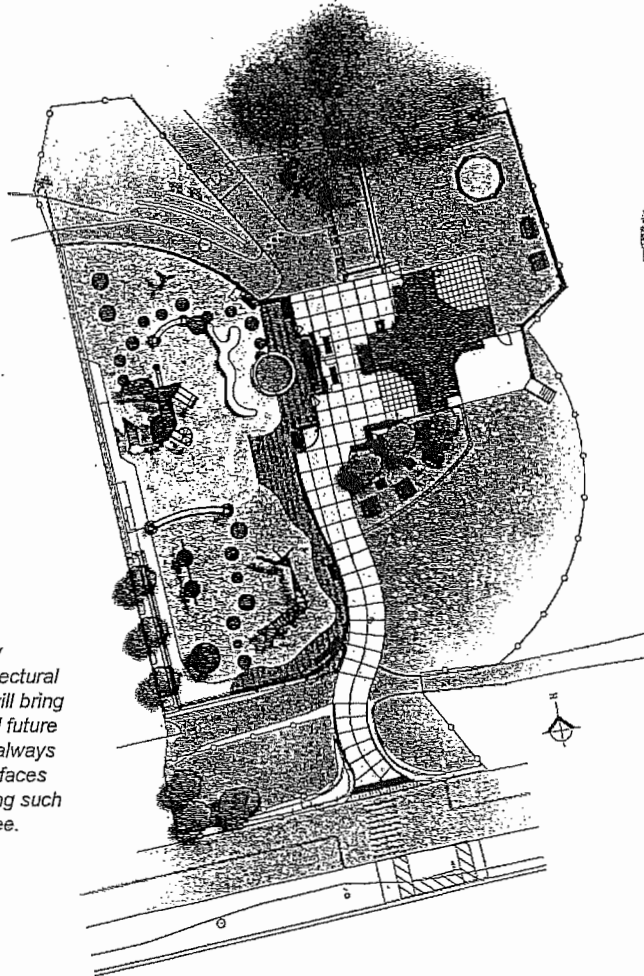
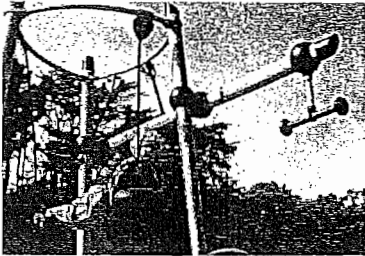
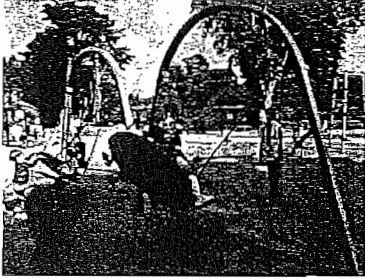


Carducci & Associates, Inc. provided a master plan and construction documents for Giorgi Park. We worked extensively through a public input process to produce several conceptual master plans for the park's rehabilitation. Following the public input process, as well as input from the Parks & Recreation Commission and other city staff, a final master plan was approved. This master plan, with the addition of two purchased adjacent lots along University Street and the general expansion of park land, brought the existing park from 2.5 acres to 3.9 acres. The master plan includes a custom art play area that includes custom pig, frog, and turtle sculptures, an acorn play house and a Russian River water play element that resembles the local portion of the Russian River's watershed and its inhabitants. Giorgi Park's master plan was able to create much-needed neighborhood connections while incorporating all 50 of the existing trees, the existing tennis courts, and the existing buildings in use on site. This park was listed as one of the top five best parks in the Bay Area by the *San Francisco Chronicle* in 2010.

CARDUCCI & ASSOCIATES, INC. 555 BEACH ST. 4TH FL. SAN FRANCISCO, CA 94133 (415) 674-0990 FAX (415) 674-0999
LANDSCAPE ARCHITECTURE IRRIGATION DESIGN PLANNING URBAN DESIGN
www.carducciassociates.com



HELEN DILLER FAMILY PLAY AREA AT JULIUS KAHN PLAYGROUND SAN FRANCISCO, CA



Dear Vince:

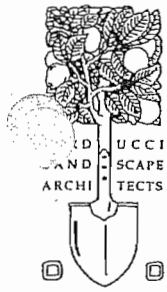
...The playground is absolutely spectacular. Your caring architectural artistry is a personal gift that will bring so much happiness to this and future generations of children...I will always treasure...those joyous young faces and screaming voices exhibiting such unabashed excitement and glee.

*Sincerely,
Sanford N. Diller
President and CEO*

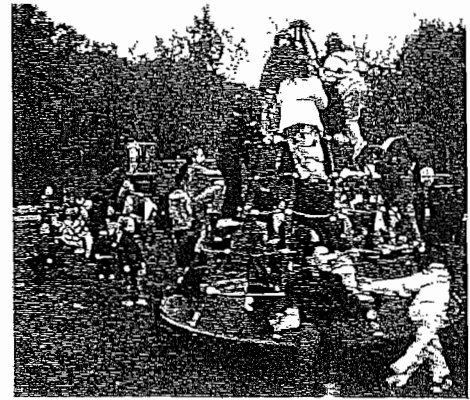
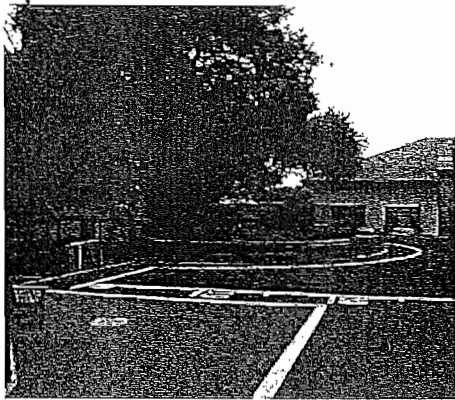
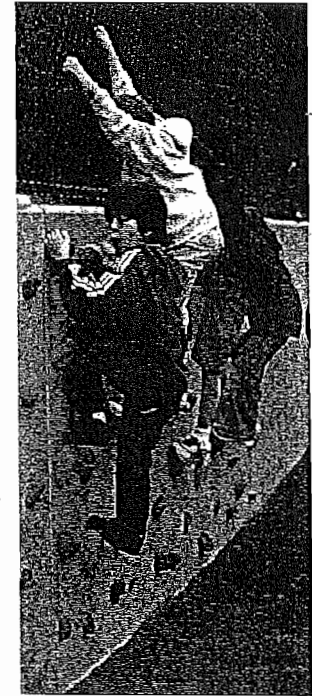
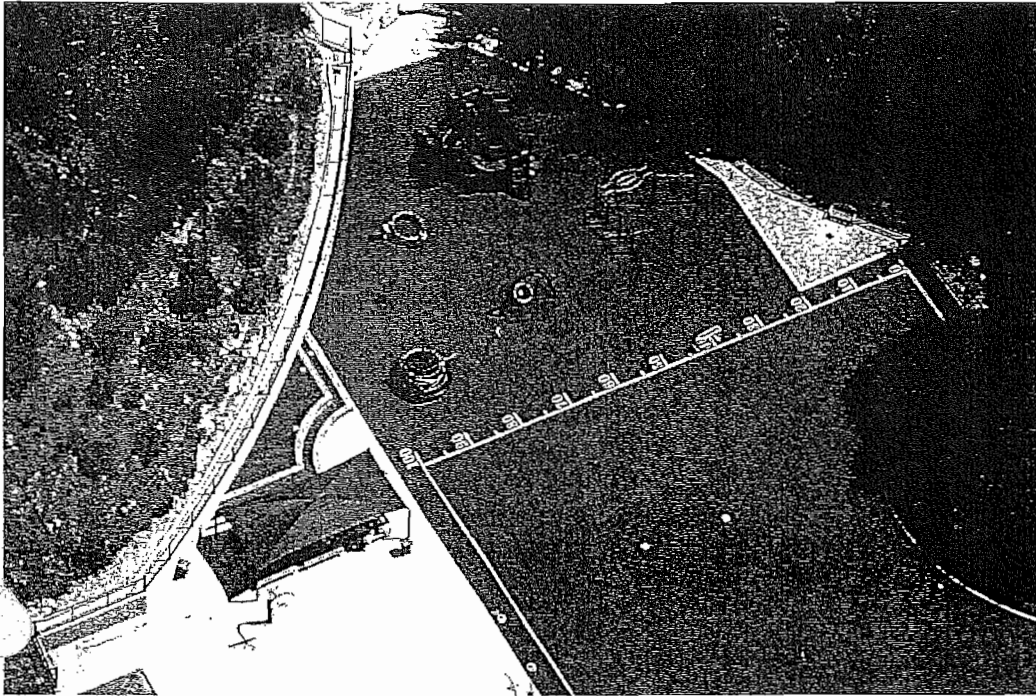
Carducci & Associates, Inc. worked with the City of San Francisco, playground neighbors, Presidio preservation and development groups, and the park's grantors, the Helen Diller Family Foundation, to create this playground within the historic Presidio in San Francisco. Accessibility and respect of the surrounding neighborhood and cultural and landscape histories of the Presidio were important aspects of the design. The many neighborhood and local schoolchildren who use the park necessitated a durable design.

Enabling Narrative:

Sand and water are central characters in interactive play within the park, at the sculptural and tactile fountain in the sand play area. Children are encouraged to pile sand in the fountain, to splash, and to explore, the shallow troughs running along the fountain's length. By opening new avenues of play to children, we encourage their creative development, and the park becomes an active force in the creation of playtime narratives that help children to socialize, learn, and develop as thinking individuals.

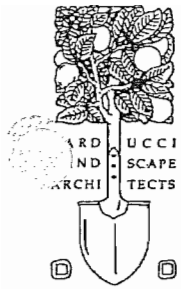


BRANDEIS HILLEL DAY SCHOOL PLAYGROUND SAN RAFAEL, CA

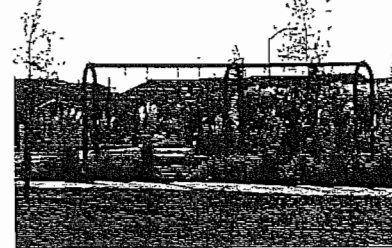
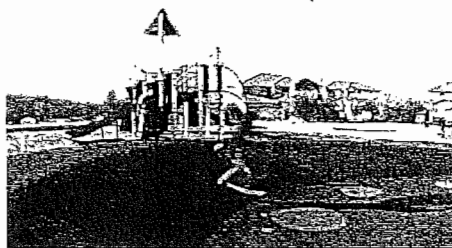
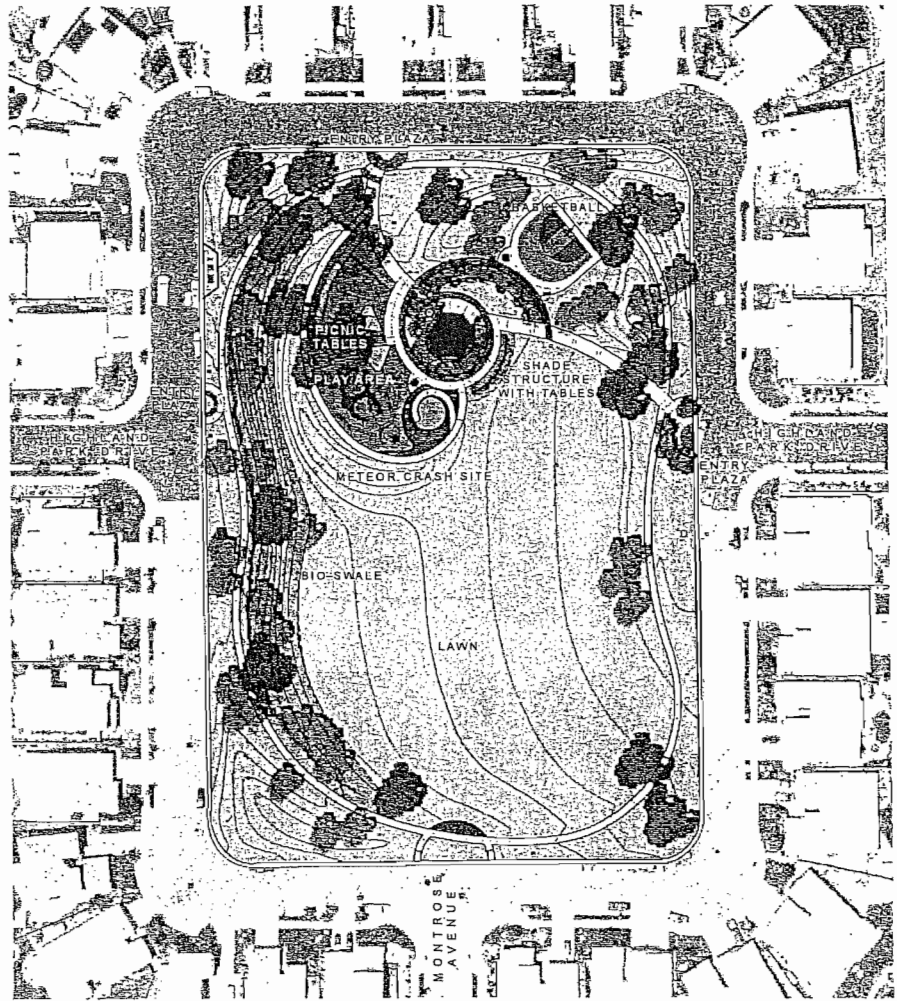


Playground renovation including innovative use of a contiguous synthetic turf surface for multiuse playing field and safety zone around and under existing and new playground equipment. Renovation also included basketball court, climbing wall, handball wall, amphitheater, outdoor lunch area with shade structure, outdoor classroom area, science garden, planting and irrigation.

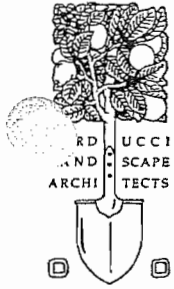
ARDUCCI & ASSOCIATES, INC. 555 BEACH ST. 4TH FL. SAN FRANCISCO, CA 94133 (415) 674-0990 FAX (415) 674-0999
LANDSCAPE ARCHITECTURE IRRIGATION DESIGN PLANNING URBAN DESIGN
www.carducciassociates.com



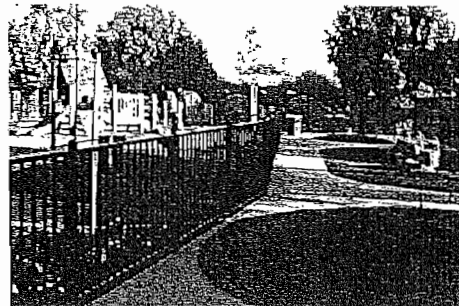
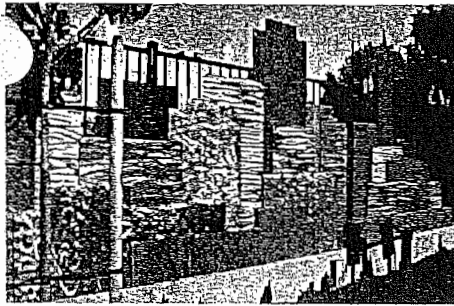
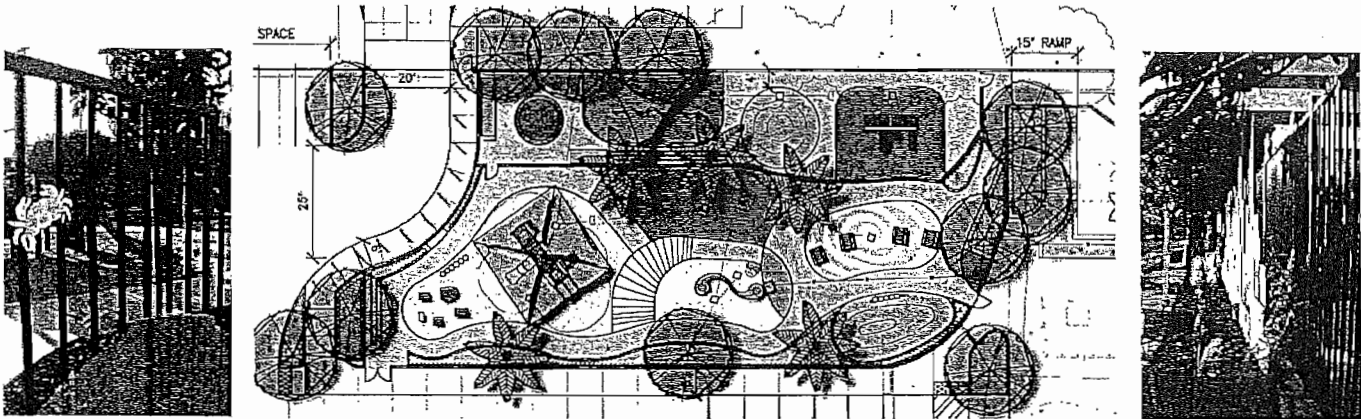
ALDO PINESCHI SR. PARK ROSEVILLE, CA



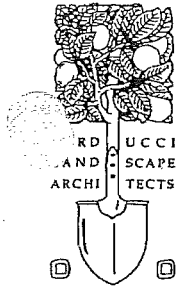
This four acre park serves the residential community in the Highland Reserve area. People walk their dogs and teenagers bike on the park's outer path. This neighborhood park includes curvilinear walkways that weave through the park and connect a covered picnic area, uncovered picnic tables, half court for basketball, children's swing area, a children's play area themed on a meteor crash site, bio-swailes and a multi-use turf meadow.



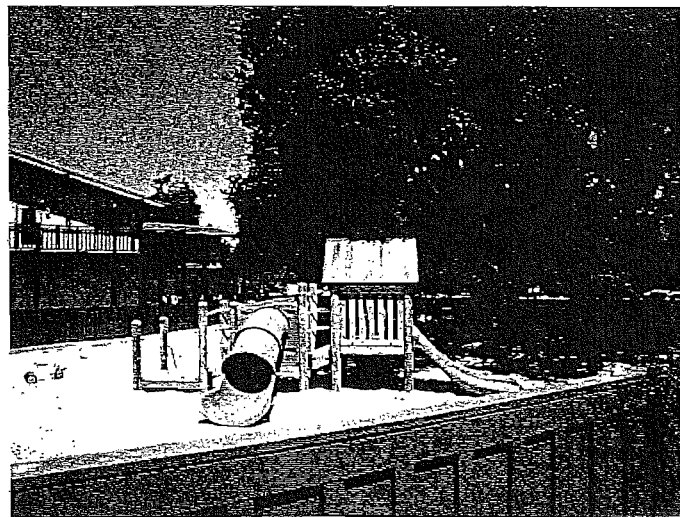
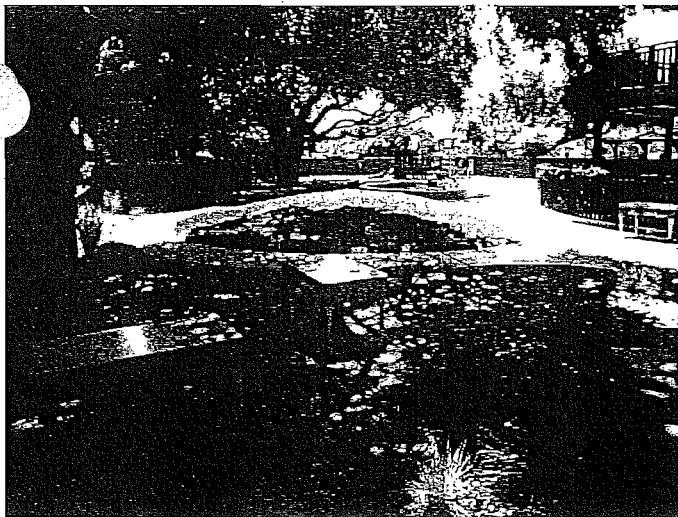
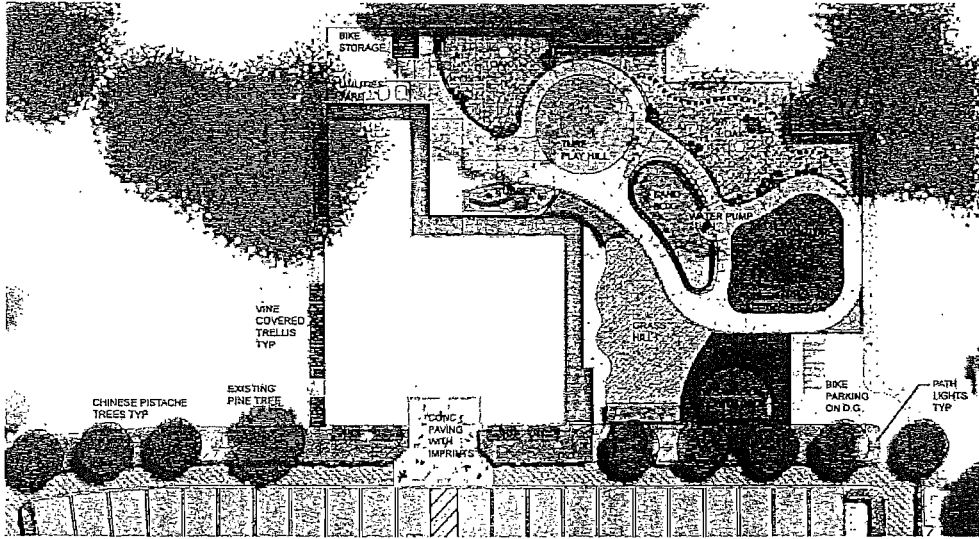
PIXAR CHILD CARE CENTER BERKELEY, CA



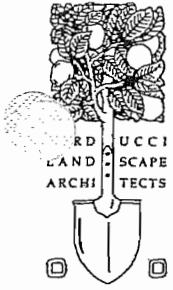
Carducci & Associates, Inc. designed the the Pixar Child Care Center which provides care to children 6 weeks to 5 years of age. We designed approximately 7,500-square-foot of playground and landscape improvements. We developed a strong working relationships with the City, Public Works, and the contractors to design the best optimal play areas for the users. During design review, the City of Berkeley required an art fence for the project. Carducci & Associates designed, got approved, and fabricated the "California Fence Scapes" art fence depicting the varied landscapes of California, including the mountains, city, country, and sea.



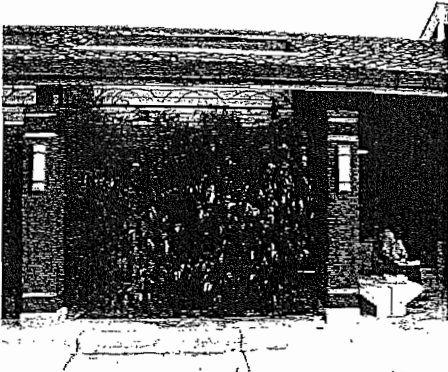
STANFORD UNIVERSITY CHILDCARE CENTER STANFORD, CA



A new childcare facility for pre-school children, on the corner of Serra Boulevard and El Camino Real at Stanford University, is located within a naturalistic meadow and grove of existing coast live oaks. The site includes a parking and drop-off area, bicycle and pedestrian access, landscaping, special paving with imprints at the building entry, and a fenced playground. The landscape conforms to the university standards for oak tree preservation, stormwater treatment, site lighting, utilities, bicycle and car parking, irrigation, and planting. The landscaping includes native and ornamental drought-tolerant colorful plants, vines, and grasses. The childcare facility is a comfortable and welcoming place for children and their families. The playground includes a separate fenced area and garden for toddlers. The pre-school children's playground includes unprogrammed play space under oak trees amid naturalistic stepping stones, boulders, and ornamental grasses. The active play space is organized with tricycle paths around islands containing natural and synthetic turf areas, a sand play area with a hand-operated water pump, and a play structure with colorful rubber safety surfacing.



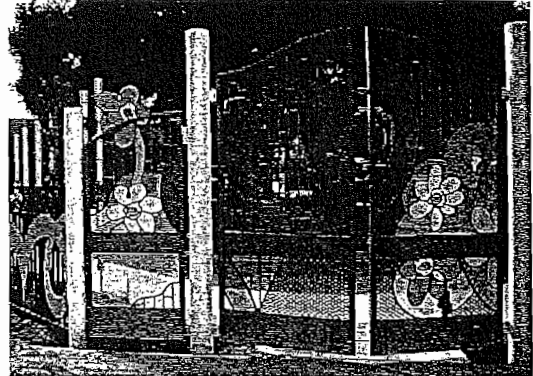
CHILD CARE CENTER MOUNTAIN VIEW, CA



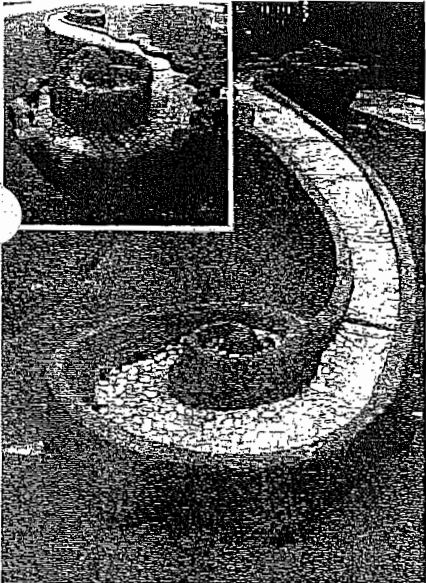
Building Entrance



Ornamental Fence



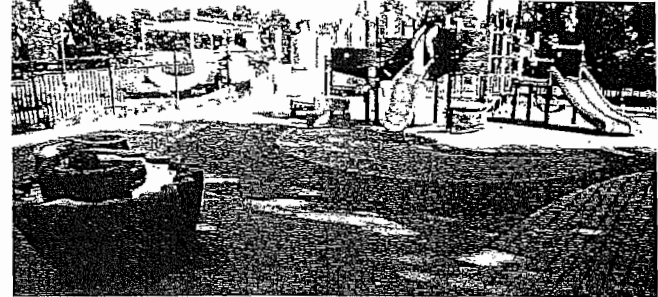
Art Piece - Gate



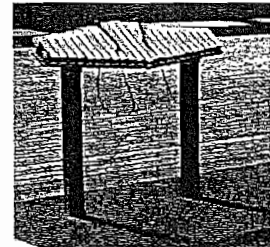
Interactive Water Feature



Music Play Chimes



Play Equipment on Rubber Play Surface

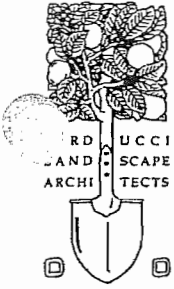


Music Play Pegasus

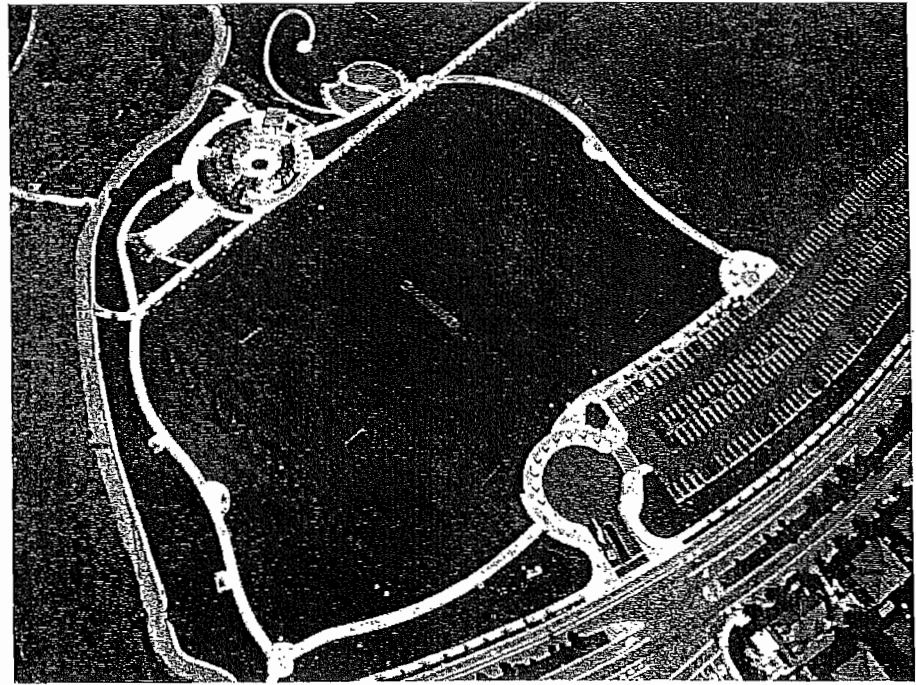
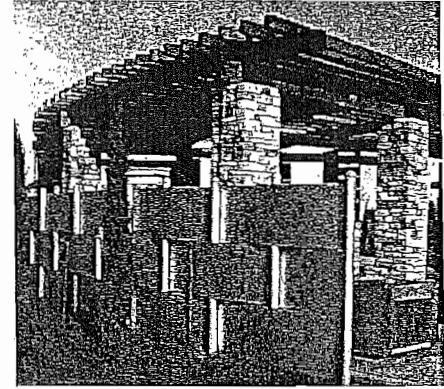
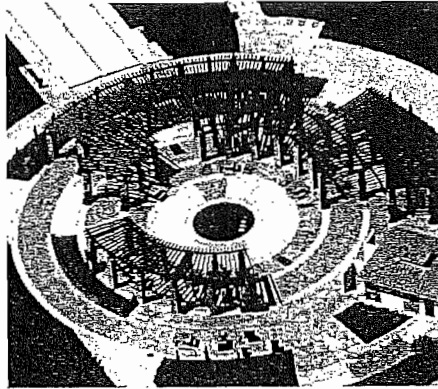
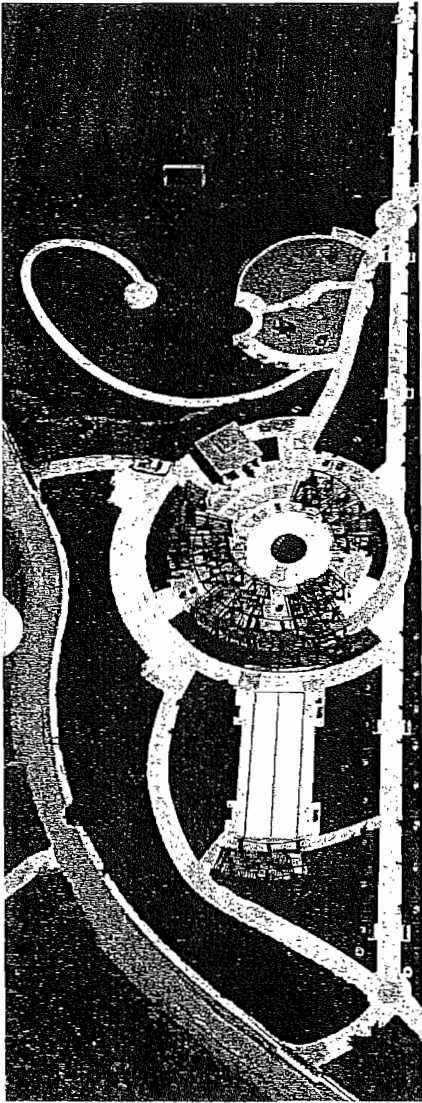


Play Equipment

Carducci & Associates helped design the City of Mountain View Child Care Center to provide high-quality child care services and activities to its residents. We visited the site, provided a mitigation plan and communicated our concerns related to the existing trees and impacts from construction. We developed a strong working relationships with the City, Public Works, and the contractors to design the best optimal play areas for the users. The center opened in September 2008 and provides care to children 6 weeks to 5 years of age.

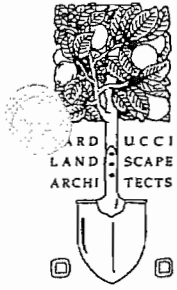


EMERALD GLEN PARK PHASE 3 DUBLIN, CA

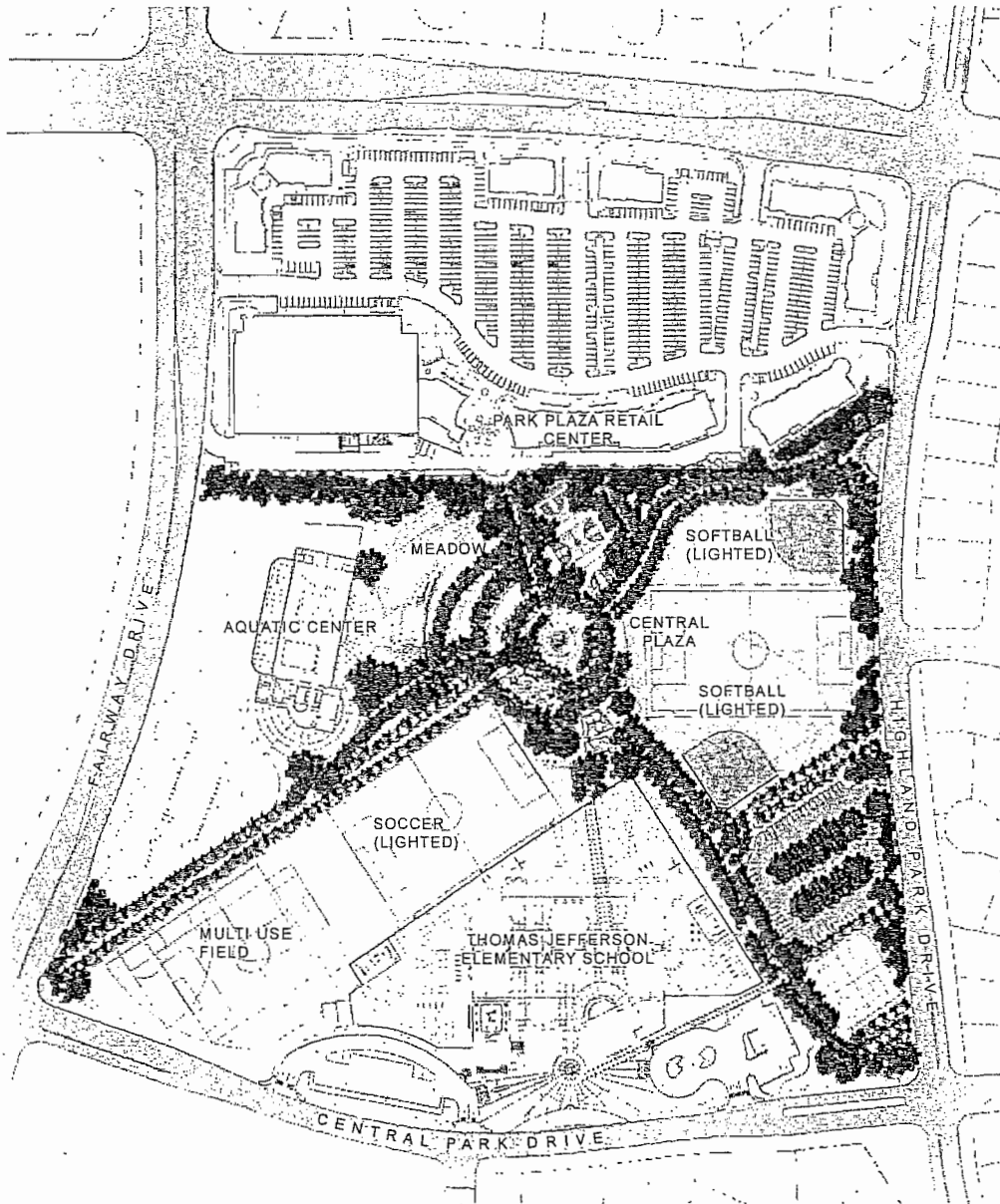


Emerald Glen Phase 3 is a 14-acre project within a 50-acre park and elements include two natural turf soccer fields with sand drainage and recycled water irrigation, a cricket overlay, bocce ball courts, a group-picnic area with circular arbor, pre-engineered restrooms, a bio-basin, bio-swales, a play area, a play hill, a mini native tree arboretum, walking paths, and connections to the public streetscape. The project involved a very successful community process. Meetings and public workshops were held to allow community members to vote on the various park features and to establish a final plan that had the public's support.

CARDUCCI & ASSOCIATES, INC. 555 BEACH ST. 4TH FL. SAN FRANCISCO, CA 94133 (415) 674-0990 FAX (415) 674-0999
LANDSCAPE ARCHITECTURE IRRIGATION DESIGN PLANNING URBAN DESIGN
www.carducciassociates.com

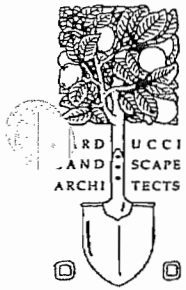


CENTRAL PARK ROSEVILLE, CA

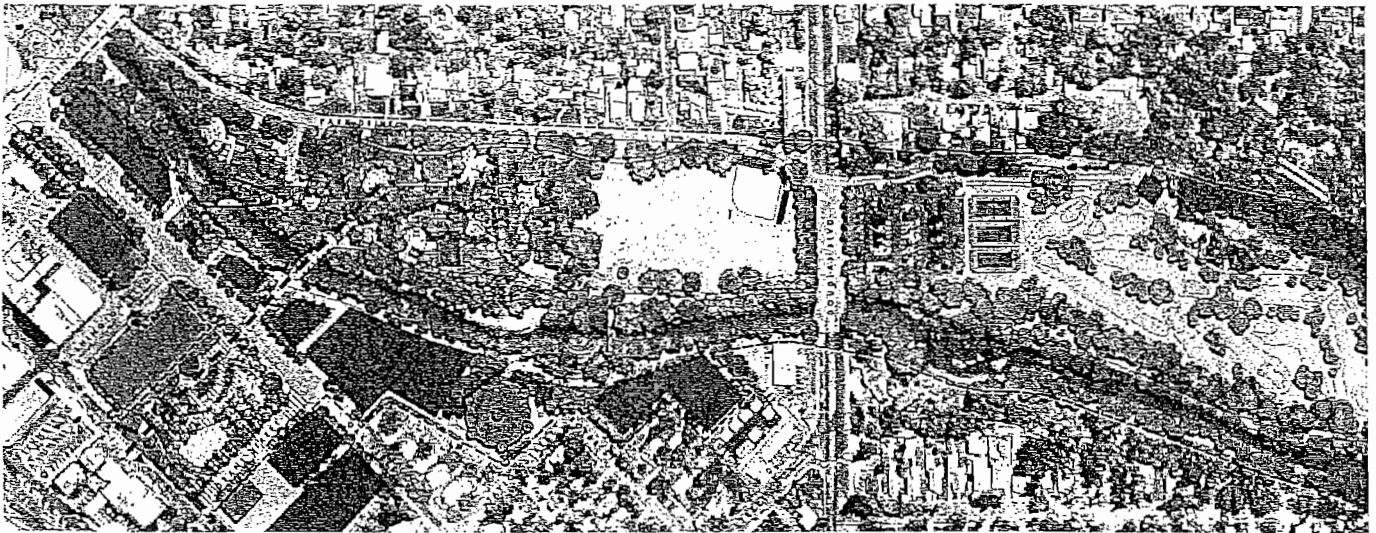
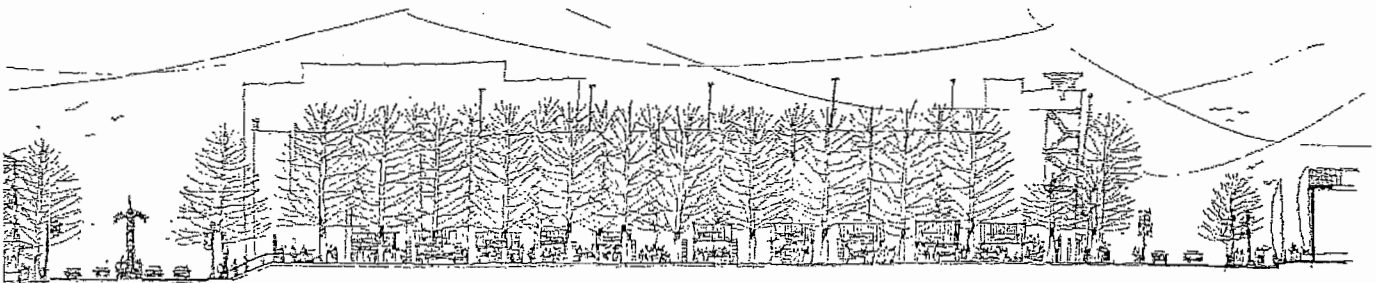


This 22-acre community park is part of a 50-acre super-block that includes the 10-acre Park Plaza Retail Center and the 15-acre Thomas Jefferson Elementary School. Curvilinear walkways weave through the park and connect the shopping and school sites to the park. The central plaza of the park holds farmer's markets and has a water play area. The park facilities include an indoor-outdoor aquatic center that meets LEED standards and an interactive water feature, 2 youth softball fields, 1 full size soccer field, 1 multi-use field, 2 tennis courts, and 2 basketball courts, picnic areas, children's play areas, shade structures, walkways, path and sports lighting, restroom building, parking with bio-filtration, irrigation and planting.

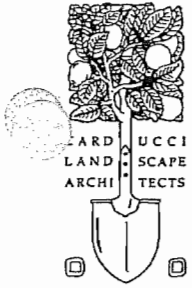
CARDUCCI & ASSOCIATES, INC. 555 BEACH ST. 4TH FL. SAN FRANCISCO, CA 94133 (415) 674-0990 FAX (415) 674-0999
LANDSCAPE ARCHITECTURE IRRIGATION DESIGN PLANNING URBAN DESIGN
www.carducciassociates.com



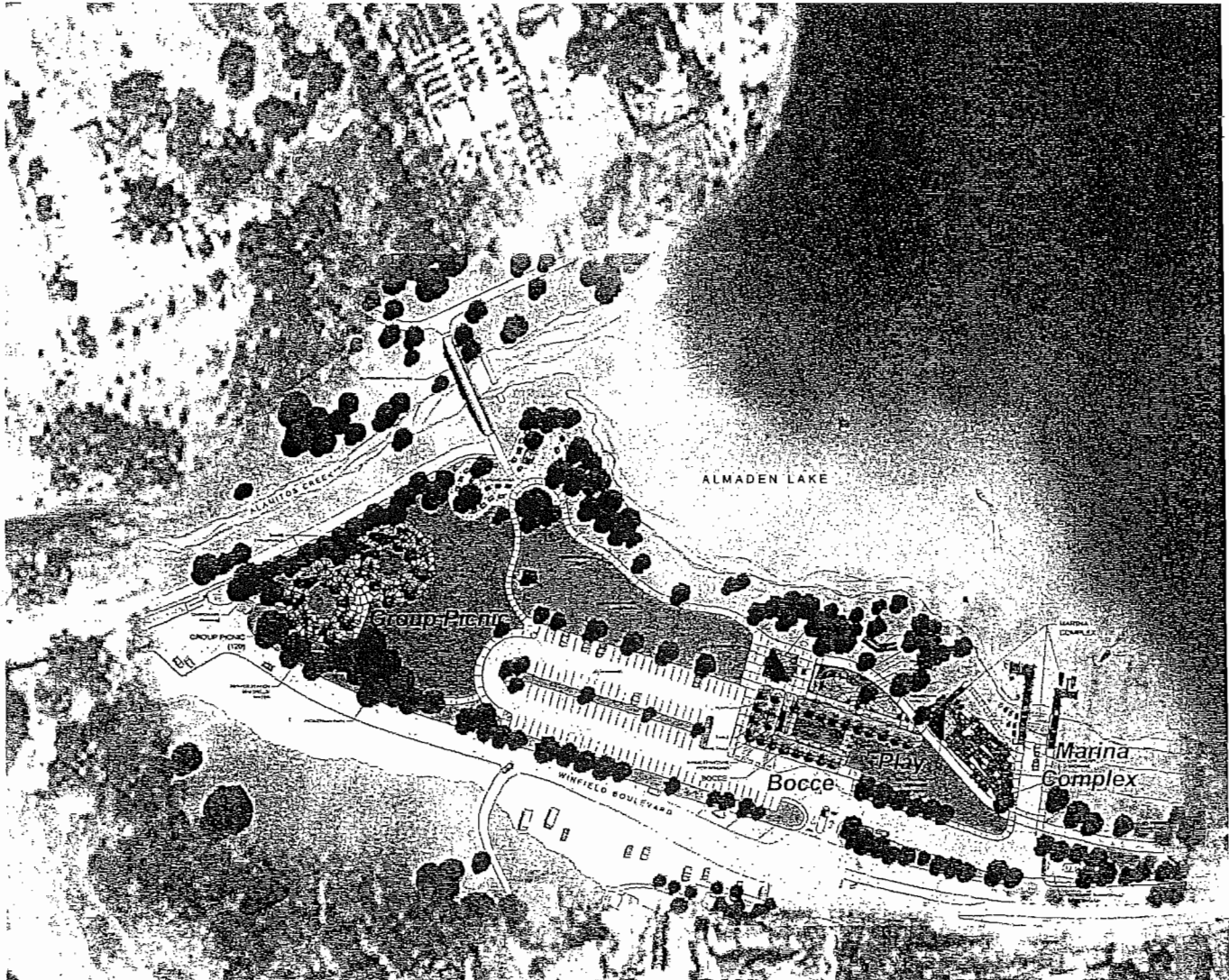
ROYER / SAUGSTAD PARK ROSEVILLE, CA



In collaboration with the Downtown Roseville Specific Plan, Carducci & Associates, Inc. developed a master plan for Royer/Saugstad Park. The master plan for the diverse, linear park increases connectivity with Downtown Roseville, by connecting the Civic Center and Town Square via a downtown bridge to Royer Park. Pedestrian bridges were upgraded and reoriented, and additional walking paths were created. Public enhancements included tree planting, creek restoration, relocation of tennis courts, and upgrading of the softball field, Dietrich Hall, and Cook Shack. Arts, culture, heritage, entertainment, and education were promoted through historical Roseville and natural history themes in signage, interpretive design, and public art. Connections, place-making, creek restoration, and flood conveyance were key components of the plan.



ALMADEN LAKE PARK SAN JOSE, CA



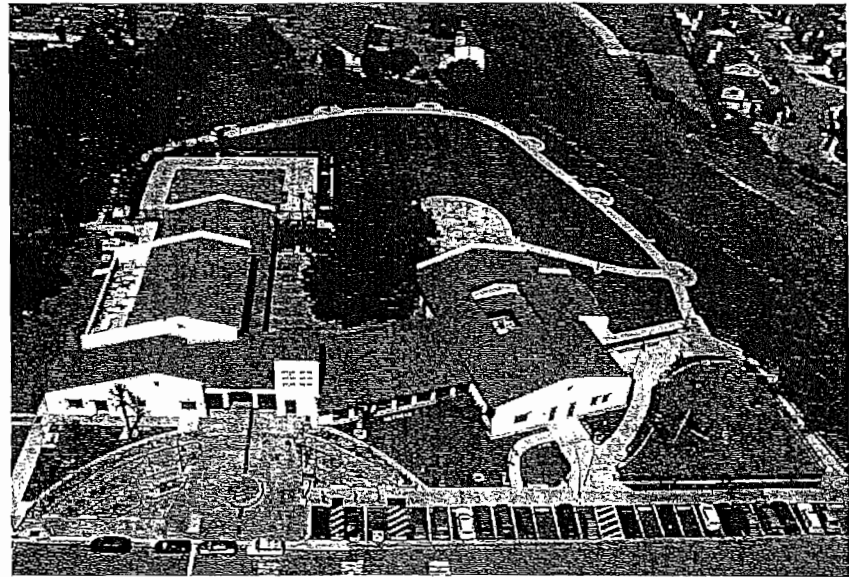
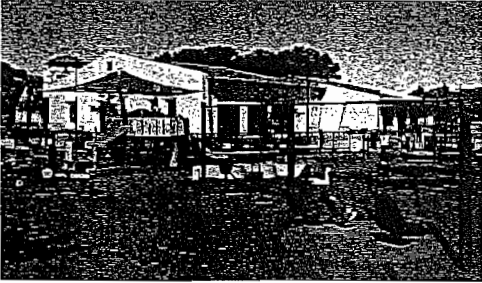
Carducci & Associates, Inc. worked with the City of San Jose Parks Department in facilitating community outreach to obtain approvals for a park bond project at the Lake Almaden Park in San Jose, California. Improvements included a group picnic area, bocce courts, children's play area, and a marina complex with snack area, rental facilities for paddleboats, a new boat ramp, and basketball courts for community use.

CARDUCCI & ASSOCIATES, INC. 555 BEACH ST. 4TH FL. SAN FRANCISCO, CA 94133 (415) 674-0990 FAX (415) 674-0999
LANDSCAPE ARCHITECTURE IRRIGATION DESIGN PLANNING URBAN DESIGN
www.carducciassociates.com

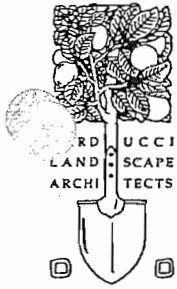


MAYFAIR COMMUNITY CENTER AND PARK SAN JOSE, CA

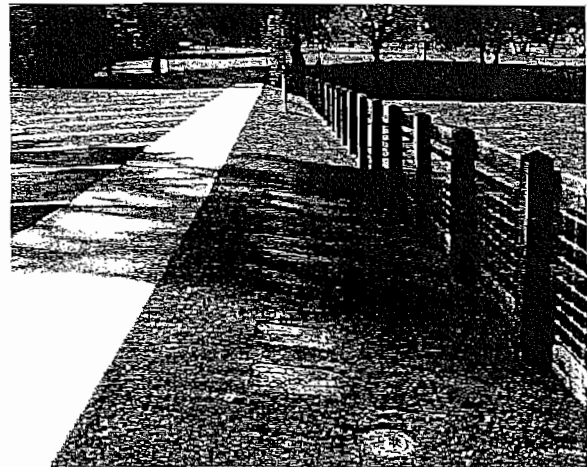
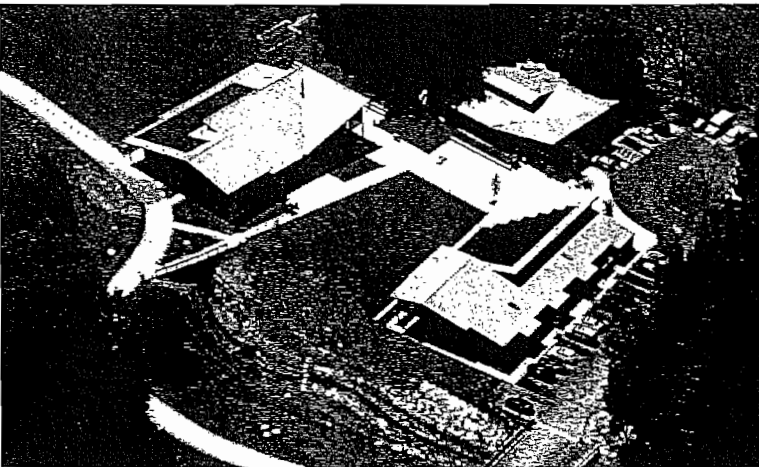
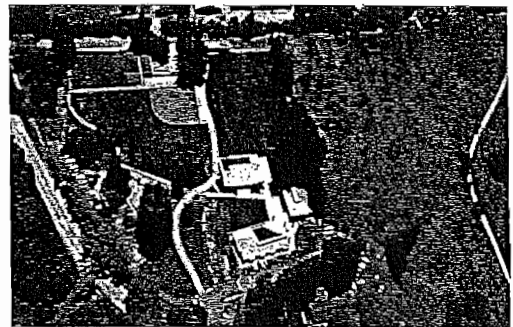
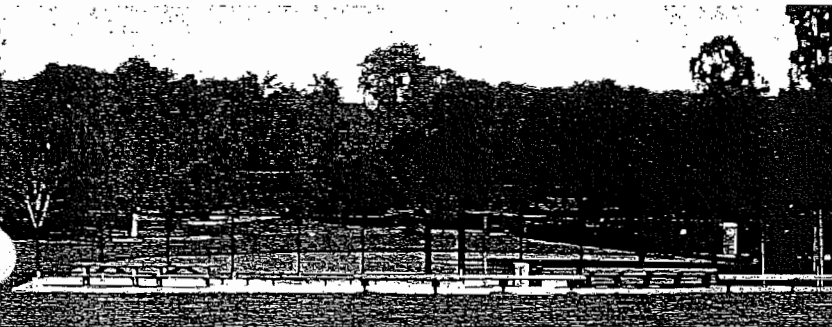
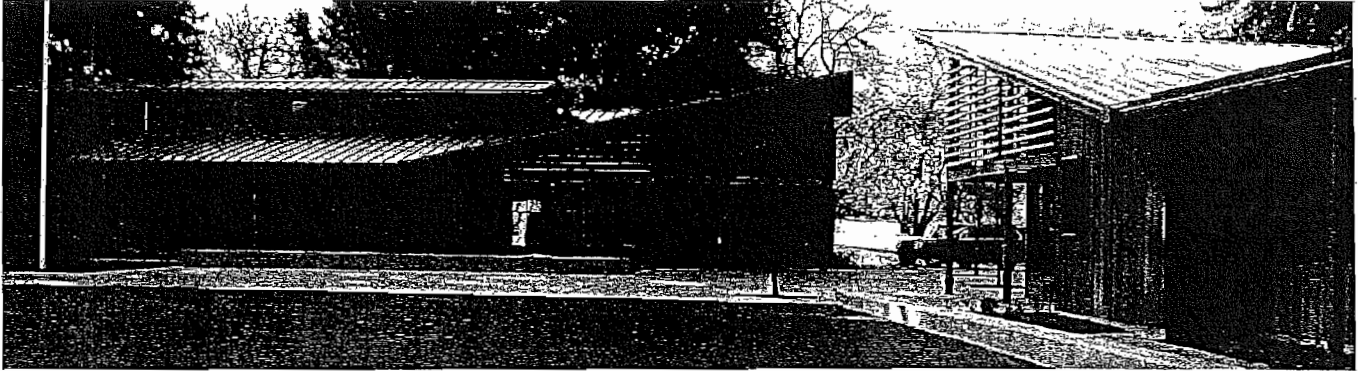
LEED®-CERTIFIED PROJECT



The 22,000-square-foot Mayfair Community Center is surrounded by an eight-acre park that is bordered by residential developments to the north and west, Kammerer Avenue to the south, and Lower Silver Creek to the east. The landscape has been awarded the Leadership in Energy and Environmental Design (LEED®) certification for environmental sensitivity and sustainability. Mayfair Community Center met standards for LEED® in many aspects of the project. Existing trees were preserved and additional native trees were planted. Xeriscaping principles were followed, and colorful and attractive, drought-tolerant plants were used for water conservation, including a succulent garden at the entry plaza that harmonizes with the mission-style architecture. Sensitive riparian areas were maximized and native trees were added for stormwater mitigation. Renovated park areas with shaded ADA compliant play equipment and renewed picnic areas, along with improved lighting throughout the park, have increased usability, site safety, and visibility.

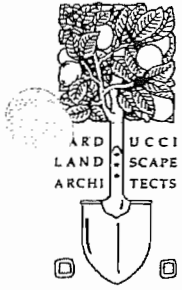


PORTOLA VALLEY TOWN CENTER
 PORTOLA VALLEY, CA
 LEED® PLATINUM CERTIFIED PROJECT

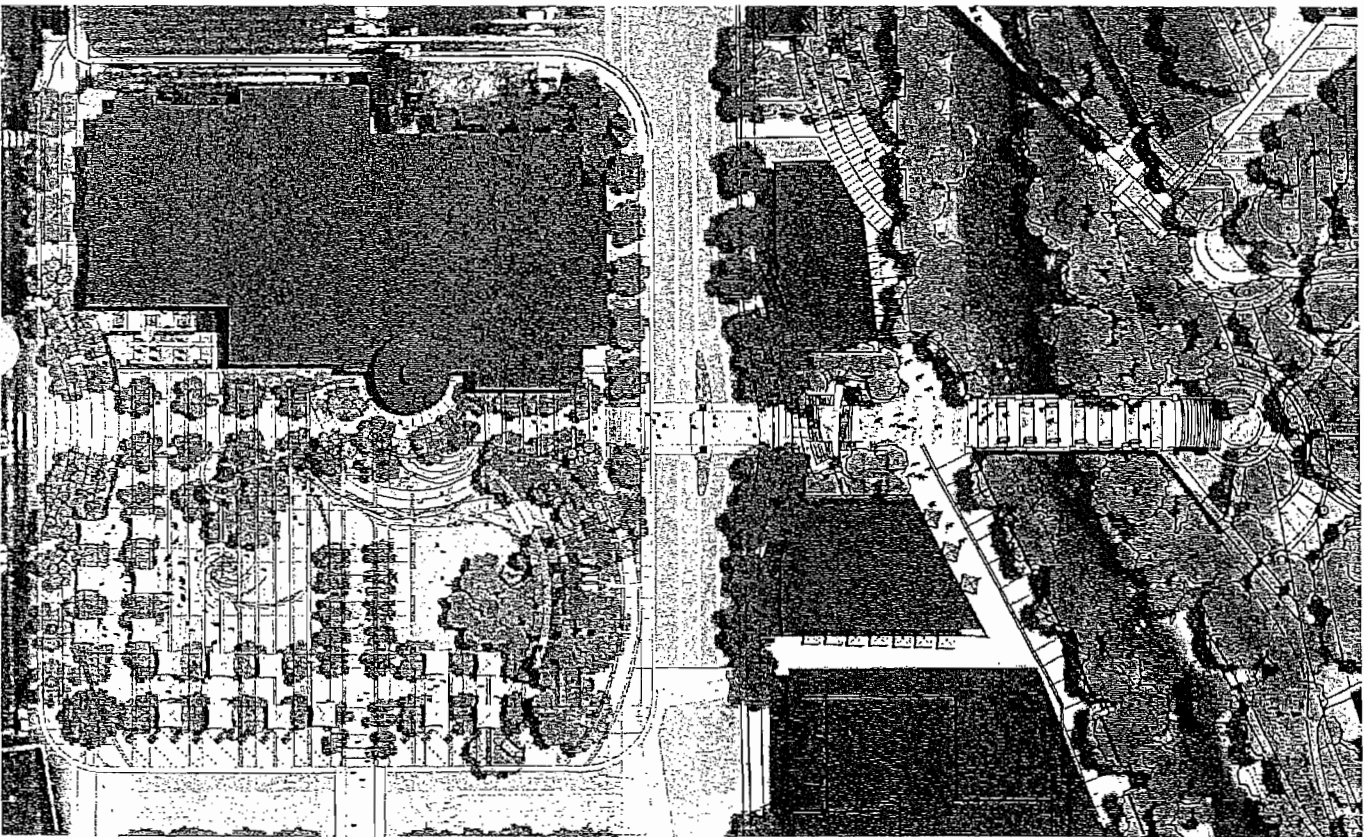
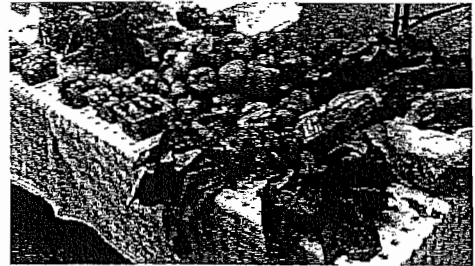
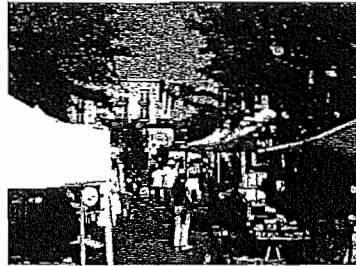
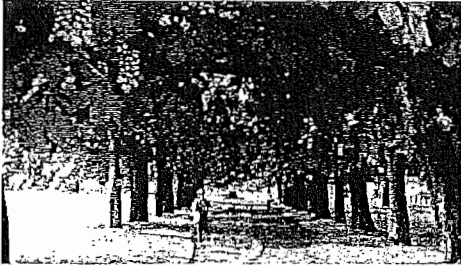


This 11-acre site sits beside a meadow and walnut grove, very close to the San Andreas Fault. The Portola Valley Town Center consists of a library, town hall and community hall. It also includes a 300-foot-long stretch of restored creek that had been diverted into a culvert. The landscaping strategy employed in the Portola Valley Town Center used all native plant species grouped by landscape type and water use needs. This approach created a beautiful, healthy, low maintenance, and ecologically sound landscape. Carducci & Associates designed the athletic facilities, including a baseball field, soccer field, and tennis courts, along with the irrigation for the Portola Valley Town Center. As part of the LEED accreditation we also provided the efficiency analysis for the irrigation design.

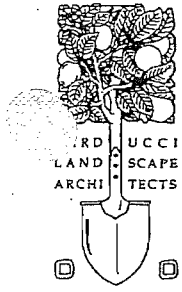
CARDUCCI & ASSOCIATES, INC. 555 BEACH ST. 4TH FL. SAN FRANCISCO, CA 94133 (415) 674-0990 FAX (415) 674-0999
 LANDSCAPE ARCHITECTURE IRRIGATION DESIGN PLANNING URBAN DESIGN
 www.carducciassociates.com



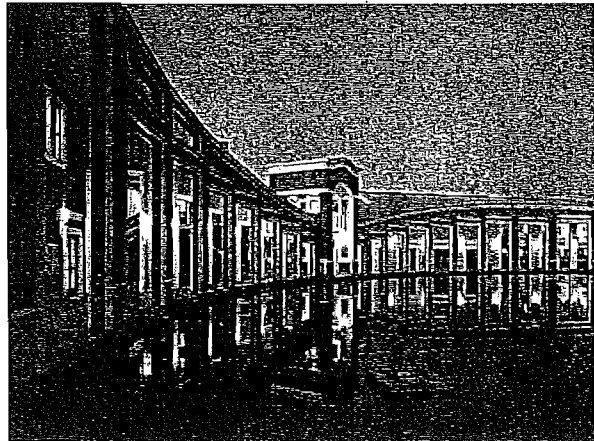
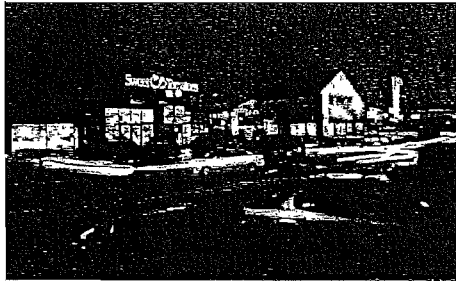
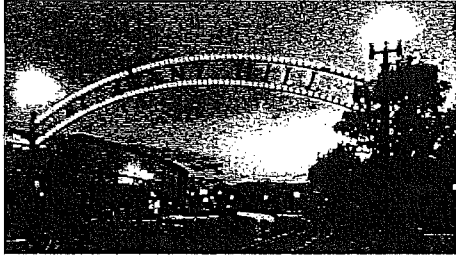
TOWN SQUARE ROSEVILLE, CA



The City of Roseville selected Carducci & Associates, Inc. to make its vision for downtown Roseville a reality. At the heart of the plan is a Town Square that will serve as the new community gathering space, reinvigorating downtown and catalyzing future redevelopment and reinvestment. A downtown bridge and mid block crossing, aligned on axis with the Civic Center promenade, provides a strong pedestrian connection between City hall, Royer Park, and outlying neighborhoods. This creates a cohesive city center and enlivens the commercial, cultural, and civic activities on Vernon Street. The promenade includes a special event stage, an open plaza with movable tables and chairs, water features, native valley oak groves, lawns, a rain garden, and many quiet sitting areas.



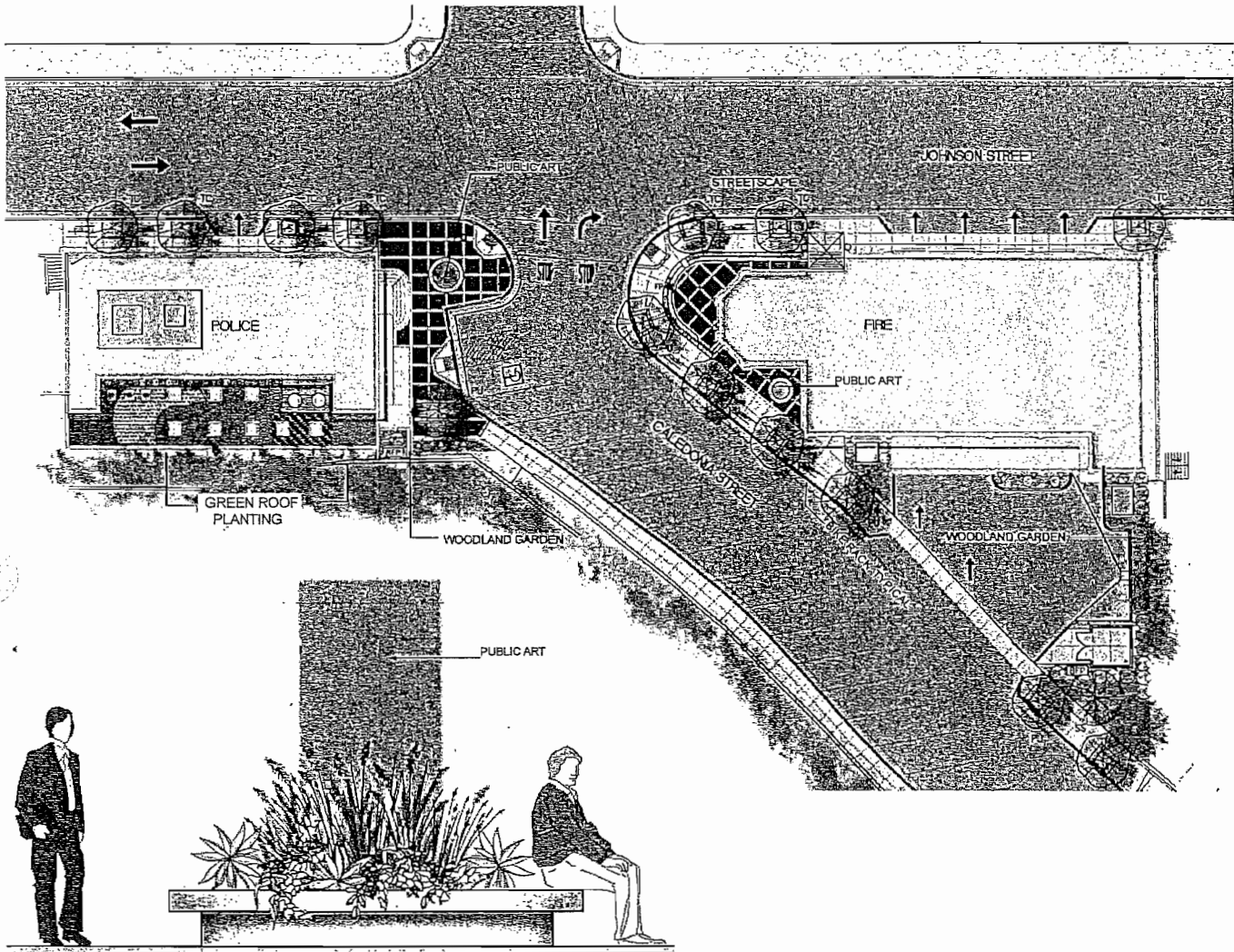
PLEASANT HILL CITY HALL PLEASANT HILL, CA



The City Hall project celebrates the community's active participation and involvement. This public-inspired scheme includes art podiums set in an engraved tile plaza with garden pavilions, that lead to a fountain courtyard, lake theater, rose trellis, demonstration garden, and art gazebo, connected by walks winding through a peaceful garden setting. Near the garden lake theater is a fountain lake that acts as a reservoir for nonpotable well water, used both to cool the building and to refresh the landscape, creating an ecological balance between the land and buildings.



PUBLIC SAFETY FACILITIES
 SAUSALITO, CA
 LEED® CERTIFIED PROJECT

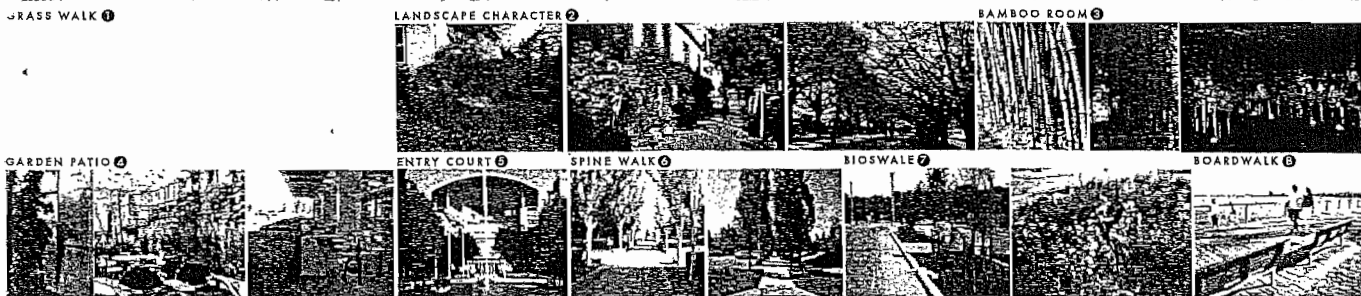
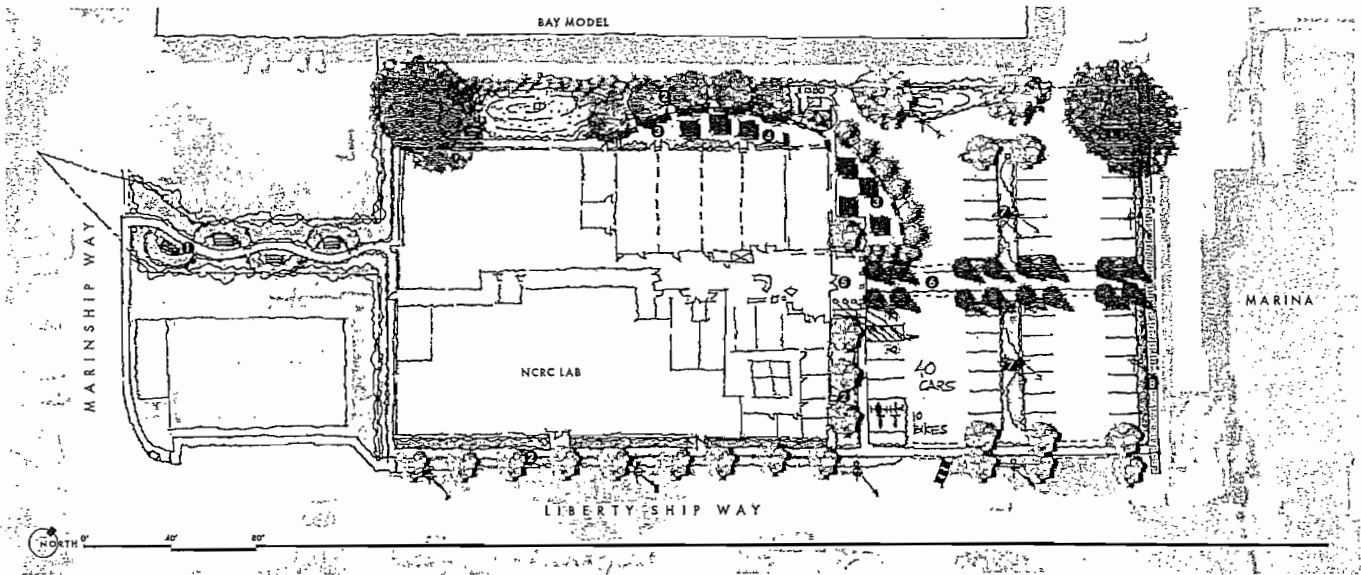


Precast Concrete Seat Planter with Public Art

This LEED certified project includes the replacement of the existing 8,000-square-foot two-story police station and 12,000-square-foot two-story firehouse that face each other from opposite street corners in a historic neighborhood near downtown Sausalito. The landscape includes a green roof for the police station, streetscape, street trees, brick plazas at the street corners for gathering places, a woodland garden, and space for rotating public art displays.



VETERANS ADMINISTRATION RESEARCH CENTER SAUSALITO, CA



Carducci & Associates, Inc. provided landscape and irrigation services for a new Veterans Administration (VA) research center located in Sausalito, CA. The current 25,000-square-foot building will be demolished and a new 30,000-square-foot building in Phase I and 19,320-square-foot building in Phase II with 96 parking stalls and Bay Conservation and Development Commission (BCDC) improvements.

Key site design elements for the project are focused on maximizing non-building space to accommodate parking, a private garden patio space, building entry arrival experience, public open space within BCDC jurisdiction. Best management practices (BMP) and sustainable design principles are utilized. Bicycle parking will be provided in parking lot and shared parking with the Bay Model Building will provide adequate parking for users. Landscaping adjacent to public sidewalk along Liberty Ship Way will be provided to public BCDC area. The landscape character will appeal to people's senses using various drought tolerant plant materials appropriate for the specific site conditions.

CITY OF SAUSALITO

PART TWO
ROBIN SWEENEY PARK
FEE PROPOSAL

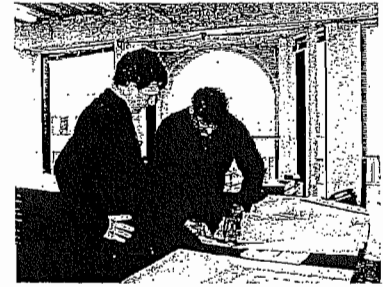
CARDUCCI & ASSOCIATES, INC.
OCTOBER 8, 2010



PART II. FEE PROPOSAL

a. Hourly Rate Schedule

Carducci & Associates, Inc.	
Principal	\$125.00
Landscape Architect	\$ 95.00
CAD	\$ 85.00
Clerical/Word Processing	\$ 55.00
Bohley Consulting	
Civil Engineer	\$200.00
2-Man Survey Crew	\$250.00
Zeiger Engineers, Inc.	
Electrical Engineer	\$180.00
Electrical CAD Drafter	\$ 99.00



b. TIME AND MATERIAL FOR BASIC SERVICES

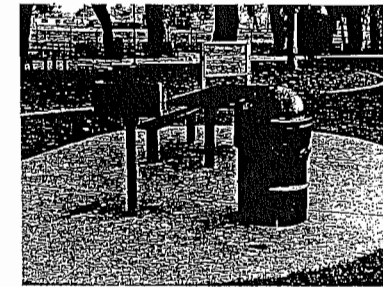
A time and material not-to-exceed fee (lump sum) for Basic Services for each phase of the project. Each such fee shall be composed of two components; basic design services and client meeting services. This includes:

Basic design services	\$130,317.00
20 Client meeting services	\$ 13,800.00



c. MEETINGS

A minimum of 20 meetings with staff, committees, commissions, public hearings, or City Council. For fee proposals purposes, assume that all meetings will be held in Sausalito and will last an average of two hours each; and will include preparation and follow up time for each meeting for an average of 4 hours.



*Orange Memorial Park
South San Francisco, CA*

d. LEVEL OF SERVICES ITEMIZATION

An itemization of the expected level of services to be provided by each subconsultant, including hours of work broken down by phase and corresponding fees. See fee proposal matrix attached.

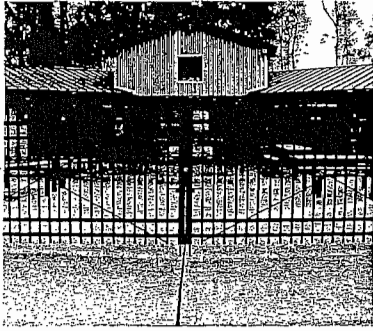


e. ADDITIONAL SERVICES

A suggested allowance for Additional Services with a list of possible services not covered in Basic Services. These additional services will be reviewed on a case-by-case basis by the City. If accepted, written authorization will be issued and the Additional Services will be compensated for on an hourly basis.

Geotechnical Report	\$ 10,000.00
Geotechnical Construction Inspection	\$ 20,000.00
Arborist Report	\$ 5,000.00
Separate Documents for offsite work	\$ 20,000.00
Boundary Survey	\$ 5,000.00
Underground Utility Survey	\$ 5,000.00
Public Art (Ned Kahn, Sonoma local artist)	\$100,000.00
Omit PG&E services	(\$ 10,000.00)

PART II. FEE PROPOSAL



Exclusions

The following exclusions are pertinent to this proposal

- Structural, geotechnical, and mechanical engineering beyond services noted above
- Off-site improvements
- Water features or fountains
- LEED certification
- Scoreboards
- Sports lighting
- Permits
- Design with recycled water
- Soil testing beyond initial soil test included in fee
- Public art design and coordination
- CEQA services beyond basic services
- Preparation of more than three (3) alternates
- Preparation of more than one bid package
- Arborist report (optional)



Orange Memorial Park
South San Francisco, CA

f. ADDITIONAL RATE SCHEDULE

A rate schedule valid during the term of the agreement for each additional City staff and public meeting.

Each City staff meeting	\$ 690.00
Each Public meeting	\$2,000.00

g. FEE PROPOSAL FOR LANDSCAPE ARCHITECTURAL SERVICES

See fee proposal summary on letterhead attached.



Westborough Park
South San Francisco, CA

h. WORK SCHEDULE, ASSUMPTIONS, AND ADDITIONAL SERVICES

A work schedule identifying milestones, time to complete and deliverables is shown below.

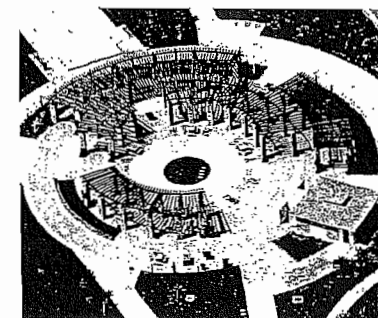
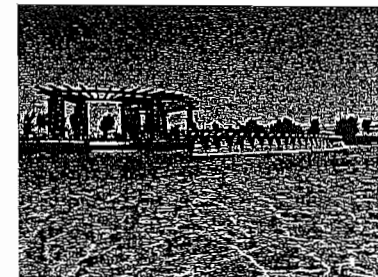
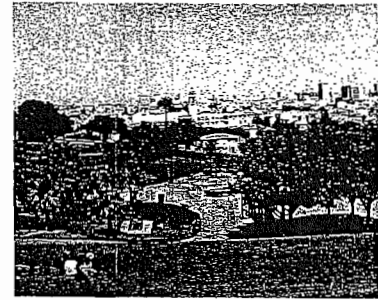
Award Design Contract	October/ November 2010
Neighborhood conceptual direction meeting	December 2010
Conceptual Design Submittal	January 2011
Conduct Public Meeting/ Refine Concept Plan	February 2011
PRC public meeting on concept approval of Park I	May 2011
Council Approval of Conceptual Design	July 2011
Schematic Design Submittal	August 2011
Design Development Submittal	September 2011
100 percent Bid Documents Submittal	November 2011
Approve Plans and Specifications and Authorize Bidding	November 2011
Advertise and Open Bids	December 2011
Award Construction Contract	January 2011
Construction	January-April 2011



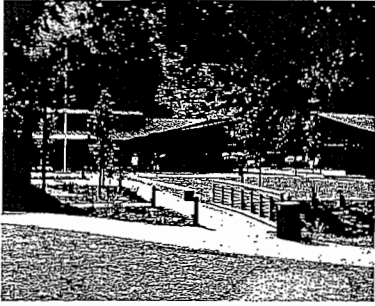
PART II. FEE PROPOSAL

ASSUMPTIONS

1. The work of the landscape architect, civil and electrical engineer are part of this proposal. Other consultation that may be required will be provided by the City or provided as an additional service to this contract.
2. A topographic survey of the area is included in the fee proposal. The City also has the option of providing a topographic survey.
3. Structural engineering, if required, will be an optional additional service.
4. An arborist report, if needed, will be an additional service.
5. Soil suitability and fertility tests will be provided as a basic expense by a soil testing lab prior to the commencement of the design phase.
6. Off site design work is not part of this proposal.
7. Traffic engineering is not part of this proposal.
8. Geotechnical investigation is not part of this proposal. If needed, this service will be provided by the City.
9. Design Phase: This proposal is based on the assumption that the project shall be installed in one phase. Additional phasing of the project shall require additional services.
10. Water Retention: No on-site water retention is anticipated.
11. Specifications: The City shall provide the standard general conditions, special conditions and bidding instructions. Carducci will prepare technical specifications.
12. Fees: The City shall pay all government fees, permits, assessments, required inspections, etc.
13. The City may assist in volunteer efforts, if available and organized, for playground installation by qualified city staff and residents, clubs, non-profit organizations to assist in savings of construction costs and building community pride for park areas.
14. The City shall have the option to provide construction support services where possible and directed by use of city staff to perform portions of the work that they are qualified to perform to minimize project costs and allow the City to pay City staff through the project budget.
15. Hazardous materials report, related work, or disposal is not part of this proposal.
16. Construction safety or means and methods is not part of the construction services work in this proposal.



*Emerald Glen Park
Dublin, CA*



*Portola Valley Town Square
Portola Valley, CA*



*Giorgi Park
Healdsburg, CA*



*Family Learning Center
San Jose, CA*



*Hamilton Community Park
Novato, CA*

ADDITIONAL SERVICES

The following services are not covered by Basic Services. The landscape architect will provide these services only when authorized by the City in writing. As Additional Services, the City may request that the landscape architect:

- Provide financial feasibility studies, environmental studies or other studies not covered under Basic Services.
- Provide models, videos or other presentation tools beyond those required under Basic Services.
- Provide graphics and/ or copy of interpretive signage.
- Attend additional meetings with outside agencies or City staff beyond the number required under Basic Services.
- Make revisions to plans, schedules, specifications or other documents for bidding and constructing the project due to the enactment or revisions of codes, laws or other regulations adopted subsequent to the preparation of each document or when such revisions are inconsistent with written approvals or written instructions previously given by the City. Revisions to bring the project within budget are not considered additional services.
- Provide for the services of professional consultants (other than the landscape architect's design team) as the City's request for assistance which does not fall within the scope of Basic Services.
- Provide assistance in grant application submittal.

Task	Cost of Work		LA Principal		LA Associate		Civil Engineer	Electrical Engineer	Electrical CAD Drafter
			Hourly Rates						
	Services	Meetings	\$125		\$95		\$200	\$180	\$99
			Services	Meetings	Services	Meetings	Services	Services	Services
Hours									
Phase I: Preliminary Investigation									
Meeting: Staff/Project Kick-off	\$0.00	\$690.00		4		2			
Meeting: Citizens Advisory Committee Parks and Recreation	\$0.00	\$690.00		4		2			
Data Review	\$2,240.00	\$0.00	4		8		4	1	
Site Visit	\$1,640.00	\$0.00	4		4		2	2	
Review Existing Playground	\$505.00	\$0.00	1		4				
Meeting: Citizens Advisory Committee	\$0.00	\$690.00		4		2			
Obtain input from city departments	\$600.00	\$0.00	1		1		1	1	
Utility Investigation	\$1,640.00	\$0.00	4		4		2	2	
Topographic Survey	\$11,260.00	\$0.00	4		8		50		
Utility Location	\$5,620.00	\$0.00	2		2		25	1	
Soils Testing	\$220.00	\$0.00	1		1				
Project Schedule	\$315.00	\$0.00	1		2				
SUBTOTAL PHASE I									
	Services	\$24,040.00	22		34		84	7	0
	Meetings	\$2,070.00		12		6			
Phase II: Conceptual Design									
Preliminary Design Concepts (3)	\$4,160.00	\$0.00	12		24		1	1	
Cost estimates	\$1,640.00	\$0.00	4		8		1	1	
Meeting/Review: City Staff	\$0.00	\$690.00		4		2			
Revise concepts	\$1,010.00	\$0.00	2		8				
Presentation: Citizens Advisory Committee	\$0.00	\$690.00		4		2			
Public Meeting/Presentation: 1st Neighborhood Meeting	\$0.00	\$690.00		4		2			
Incorporate requested revisions	\$3,280.00	\$0.00	8		24				
Public Meeting/Presentation: 2nd Neighborhood Meeting	\$0.00	\$690.00		4		2			
Presentation: Parks and Recreation Commission (PRC)	\$0.00	\$690.00		4		2			
Incorporate requested revisions	\$1,010.00	\$0.00	2		8				
Meeting/Review: City Staff	\$0.00	\$690.00		4		2			
Meeting/Presentation: City Council	\$0.00	\$690.00		4		2			
SUBTOTAL PHASE II									
	Services	\$11,100.00	28		72		2	2	0
	Meetings	\$4,830.00		28		14			
Phase III: Schematic Design 35%									
Prepare 35% design plans (3 Sets)	\$13,520.00	\$0.00	16		80		16	4	
Outline specifications	\$595.00	\$0.00	4		1				
General narrative	\$220.00	\$0.00	1		1				
Conform to city standards	\$440.00	\$0.00	2		2				
Cost estimate	\$1,390.00	\$0.00	2		8		1	1	
Update project schedule	\$220.00	\$0.00	1		1				
Address outside agency requirements	\$505.00	\$0.00	1		4				
Meeting/Review: City Staff	\$0.00	\$690.00		4		2			
Presentation: Citizens Advisory Committee	\$0.00	\$690.00		4		2			
Incorporate requested revisions	\$1,640.00	\$0.00	4		12				
CEQA Support Information and Documentation	\$1,260.00	\$0.00	4		8				
Meeting/Review: City Staff	\$0.00	\$690.00		4		2			
SUBTOTAL PHASE III									
	Services	\$19,790.00	35		117		17	5	0
	Meetings	\$2,070.00		12		6			
Phase IV: Design Development (65%)									
Assist with permit applications	\$1,459.00	\$0.00	2		2		1	4	1
Prepare 65% design plans (3 Sets)	\$10,700.00	\$0.00	8		40		16	4	20
Propose bid alternates	\$1,218.00	\$0.00	2		2		2	1	2
Cost estimate	\$1,390.00	\$0.00	2		8		1	1	
Update project schedule	\$95.00	\$0.00			1				
Meeting: Citizens Advisory Committee	\$0.00	\$690.00		4		2			

Task	Cost of Work		LA Principal		LA Associate		Civil Engineer	Electrical Engineer	Electrical CAD Drafter	
			Hourly Rates							
	Services	Meetings	\$125	\$95	\$200	\$180	\$99			
				Services	Meetings	Services	Services	Services		
				Hours						
Incorporate requested revisions	\$2,140.00	\$0.00	8		12					
Prepare presentation drawings, material boards	\$3,280.00	\$0.00	8		24					
<i>Meeting/Presentation: Parks & Recreation Commission (PRC)</i>	\$0.00	\$690.00		4		2				
Incorporate requested revisions	\$1,640.00	\$0.00	4		12					
Verify budget with estimate	\$880.00	\$0.00	4		4					
<i>Meeting/Review: City Staff</i>	\$0.00	\$690.00		4		2				
<i>Meeting/Presentation: Planning Commission</i>	\$0.00	\$690.00		4		2				
Incorporate Requested Revisions	\$820.00	\$0.00	2		6					
<i>Meeting/Presentation: City Council</i>	\$0.00	\$690.00		4		2				
SUBTOTAL PHASE IV	\$23,622.00		40		111		20	10	23	
		\$3,450.00		20		10				
Phase V: Construction Documents										
Prepare 95% Plans and Specifications (3 Sets)	\$11,208.00	\$0.00	12		40		20	4	12	
SWPPP Plans and C-3 Calcs	\$1,850.00	\$0.00	2				8			
Prepare up to 3 bid alternates	\$2,566.00	\$0.00	2		8		4	2	4	
Cost Estimate Update	\$1,010.00	\$0.00	2		8					
Update project schedule	\$220.00	\$0.00	1		1					
<i>Meeting: Citizens Advisory Committee</i>	\$0.00	\$690.00		4		2				
Incorporate requested revisions	\$1,640.00	\$0.00	4		12					
Prepare 100% Construction Plans & Specifications (2 Sets)	\$3,396.00	\$0.00	4		16		4	1	4	
<i>Meeting/Review: City Staff</i>	\$0.00	\$690.00		4		2				
SUBTOTAL PHASE V	\$21,890.00		27		85		36	7	20	
		\$1,380.00		8		4				
Phase VI: Bidding										
Provide list of Contractors	\$125.00	\$0.00	1							
Pre-bid conference	\$500.00	\$0.00	4							
Respond to RFI	\$1,840.00	\$0.00	4		8		2	1		
Prepare addenda	\$2,038.00	\$0.00	4		8		2	1	2	
Bid evaluation assistance	\$1,060.00	\$0.00	4		4			1		
SUBTOTAL PHASE VI	\$5,563.00		17		20		4	3	2	
		\$0.00		0		0				
Phase VII: Construction Administration										
Pre-construction meeting	\$880.00	\$0.00	4		4					
Review shop drawings and submittals	\$3,540.00	\$0.00	4		16		4	4		
Bi-weekly site visits (10 max)	\$5,760.00	\$0.00	40		8					
Review plant materials	\$500.00	\$0.00	4							
Prepare design clarifications	\$3,396.00	\$0.00	4		16		4	1	4	
Prepare punch list	\$2,020.00	\$0.00	4		8		2	2		
Preliminary review	\$880.00	\$0.00	4				1	1		
Final review	\$680.00	\$0.00	4					1		
Prepare Record Drawings in AutoCAD	\$6,656.00	\$0.00	4		40		8	2	4	
SUBTOTAL PHASE VII	\$24,312.00		72		92		19	11	8	
		\$0.00		0		0				
SUBTOTAL COSTS - ALL PHASES	\$130,317.00	\$13,800.00	\$30,125	\$10,000	\$50,445	\$3,800	\$36,400	\$8,100	\$5,247	
TOTAL	\$130,317.00	\$13,800.00	\$30,125	\$10,000	\$50,445	\$3,800	\$36,400	\$8,100	\$5,247	

TOTAL COSTS, INCLUDING MEETINGS: \$144,117.00
TOTAL BASIC SERVICES -DIRECT COSTS FOR PRINTING: \$5,850.00
TOTAL ALL SERVICES: \$149,967.00

CLIENT MEETINGS AND BASIC SERVICES AND DIRECT COST FOR PRINTING EXPENSES

Client Meetings Distribution (Estimate)	Phase I	Phase II	Phase III	Phase IV	Phase V	Phase VI	Phase VIII	Total
(5) Citizens Advisory Committee Meetings	1	1	1	1	1			5
(3) Parks and Recreation Meetings	1	1		1				3
(2) City Council Meetings		1		1				2
(2) Neighborhood Meetings		2						2
(1) Planning Commission Meeting				1				1
(7) Staff Meetings	1	2	2	1	1			7
SUBTOTAL MEETINGS	3	7	3	5	2	0	0	20

Basic Services - Direct Costs For Printing Expenses

Soil testing	\$250.00							
Conceptual Designs and Material Boards	\$800.00							
35% Design (3 Sets)	\$650.00							
65% Design (3 Sets)	\$650.00							
95% Design (3 Sets)	\$650.00							
100% Design (3 Sets)	\$650.00							
100% Design Mylar Drawings	\$1,200.00							
Record Mylar Drawings	\$1,000.00							
TOTAL BASIC SERVICES - DIRECT COSTS FOR PRINTING	\$5,850.00							