

# CITY OF SAUSALITO

Sausalito, CA 94965

Addendum No. 8

Notice Issued January 6, 2011

For

## **Priority 1 Sewer Replacement, Project 1B, Spinnaker/Humboldt Street Sewer & Anchor Street Pump Station Rehabilitation**

---

### **NOTICE TO ALL PLAN HOLDERS SUBMITTING BIDS FOR THIS WORK:**

You are hereby notified of the following information, changes, clarifications or modifications to the original Contract Documents, Project Manual, Drawings, Specifications and subsequent Addenda. The Addendum shall supersede the original Contract Documents and previous Addenda wherein it contradicts the same and shall take precedence over anything to the contrary therein. All other conditions remain, UNCHANGED.

This Addendum is hereby made a part of the Contract Documents to the same extent as though it were originally included therein.

#### **Additional Information:**

The City of Sausalito undertook potholing work to identify location and depths of various utilities related to this project and another City project. The results of this potholing work are provide in the following two documents:

1. Pothole Data Key – provides pothole information.
2. Pothole Locations – provides location of potholes and other information related to the potholing work.

This information is provided for the benefit of prospective bidders and does not purport to identify all utilities or to precisely locate them.

**END OF ADDENDUM NO. 8**

#### **ACKNOWLEDGED:**

\_\_\_\_\_  
Bidder's Signature

A signed copy of this addendum is to be submitted as a part of the bid package for the subject project. Failure to do so may subject the Bidder to disqualification.

#### **Attachment:**

Pothole Locations  
Pothole Data Key

POTHOLE KEY

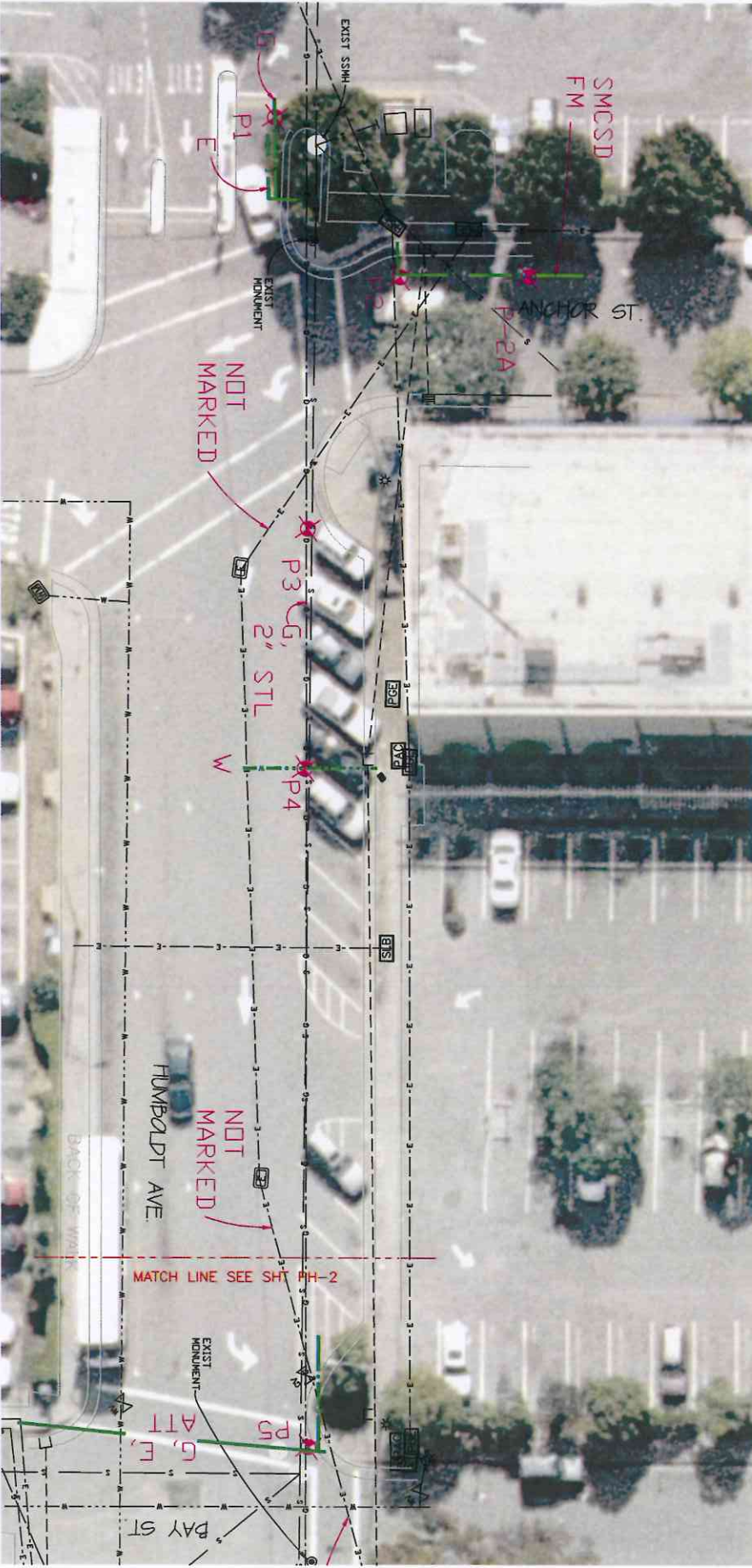
PH #	Cut Size	Asph	Conc.	Soil	Utility	Material	Depth	Comments
P1	1'x1'	4.5"		Dirt, sand	2" Gas	Steel	23.5"	
					Elec	Concrete duct	30"	
P2	1'x2.5'	8"		Rock, ballast, dirt	Elec? Force Main?	Concrete	Top: 22.5" Bot: 32.5"	Hit concrete at 22.5". Opened hole to a 1'x2.5' and still hit concrete at 32.5".
P-2A	1'x1'	6"		Gravel	Force Main	?	Dry hole	No locate on line. No visual due to gravel caving in. Cleared to 43".
P3	1'x1'	4"	6"	Dirt, rocks	2" Gas	Steel	17"	
P4	1'x1'	5"		Dirt, rocks	1" Water service	Steel	28"	
P5	1'x1'	5"		Lots of rocks, dirt	2" Gas	Steel	42"	
					Elec ATT	Wood concrete	47"	
P7	1'x1'	6"		Clay, base rock	4" ATT	PVC	42"	4" ATT was under wood.
					Unknown, water and elec	Concrete	50"	Possible concrete cap or duct.
P9	1'x1'	5"		Dirt, rocks, base rock	4" Sanitary sewer	Wood plank	40"	Wood plank 4" PVC sanitary sewer running under wood.
P10	12"	10"		Slurry, hard clay, loose pebbles	2" Unknown conduits	PVC	19"	Not clear if we found ATT or elec on location. Only found 1 conduit. Went down 5'. Per Andrew (City inspector), gave the OK.

POTHOLE KEY

PH #	Cut Size	Asph	Conc.	Soil	Utility	Material	Depth	Comments
P11	1x1'	6"		Base rock	Comm elec	Concrete cap	9.5"	
					4-1" Comm elec	PVC	18"	
P12	12"	2"		Dirt, AC, dirt, ground water	ATT wood duct South edge	Wood	39"	Hit ground water.

P14	1x1'	4"		Base rock	4" Sanitary sewer	PVC	23"	
P15	1x1'	3"		Dirt, AC, hard clay, ground water	2" Gas	Steel with black wrap		No locate on ATT line. Cleared to 5' deep. Felt possible 2" gas at 29".
P16	1x1'	4"		5" slurry, sand	1" ATT conduit	PVC	22"	

P20	12" 1x1'	8"		Dirt, AC, base rock	6" Water	Steel with white wrap	36"	
P21	12"	3"		Dirt, AC, base rock	6" Water	Steel with white wrap	42"	
P22	12"	2"		Dirt, AC, base rock, ground water	ATT duct	Clay	Top: 7" Bot: 19"	No elec might be underneath duct.
					1" Gas (N side)	Plastic	C: 28"	
					6" Water	Steel with white wrap	C: 38"	
P23	1x2'	4"		Dirt, slurry, AC dirt	red conc/slurry cap (N side), slurry below	Clay	red conc cap Top: 15" Bot: 27" slurry at 41"	No elec, or sanitary sewer but there's slurry at 41" on mark. Per Andrew (City inspector), said that's ok and that elec might be underneath concrete cap and not to go thru slurry because sanitary sewer might be under slurry.
					1" Gas	Plastic	C: 35"	
					Slurry	Slurry	Top: 41"	



✕ P2 APPROXIMATE POT HOLE LOCATION FOR UTILITY INFORMATION  
 NOT MARKED IN VACUITY OF UNDERGROUND SERVICE ALERT

G, E, ATT USA PAYEMENT MARKINGS  
 APPROXIMATE LOCATION OF USA MARKINGS

NOT MARKED IN VACUITY OF UNDERGROUND SERVICE ALERT

CITY OF SAUSALITO  
DEPARTMENT OF PUBLIC WORKS

POTHOLES PROJECT

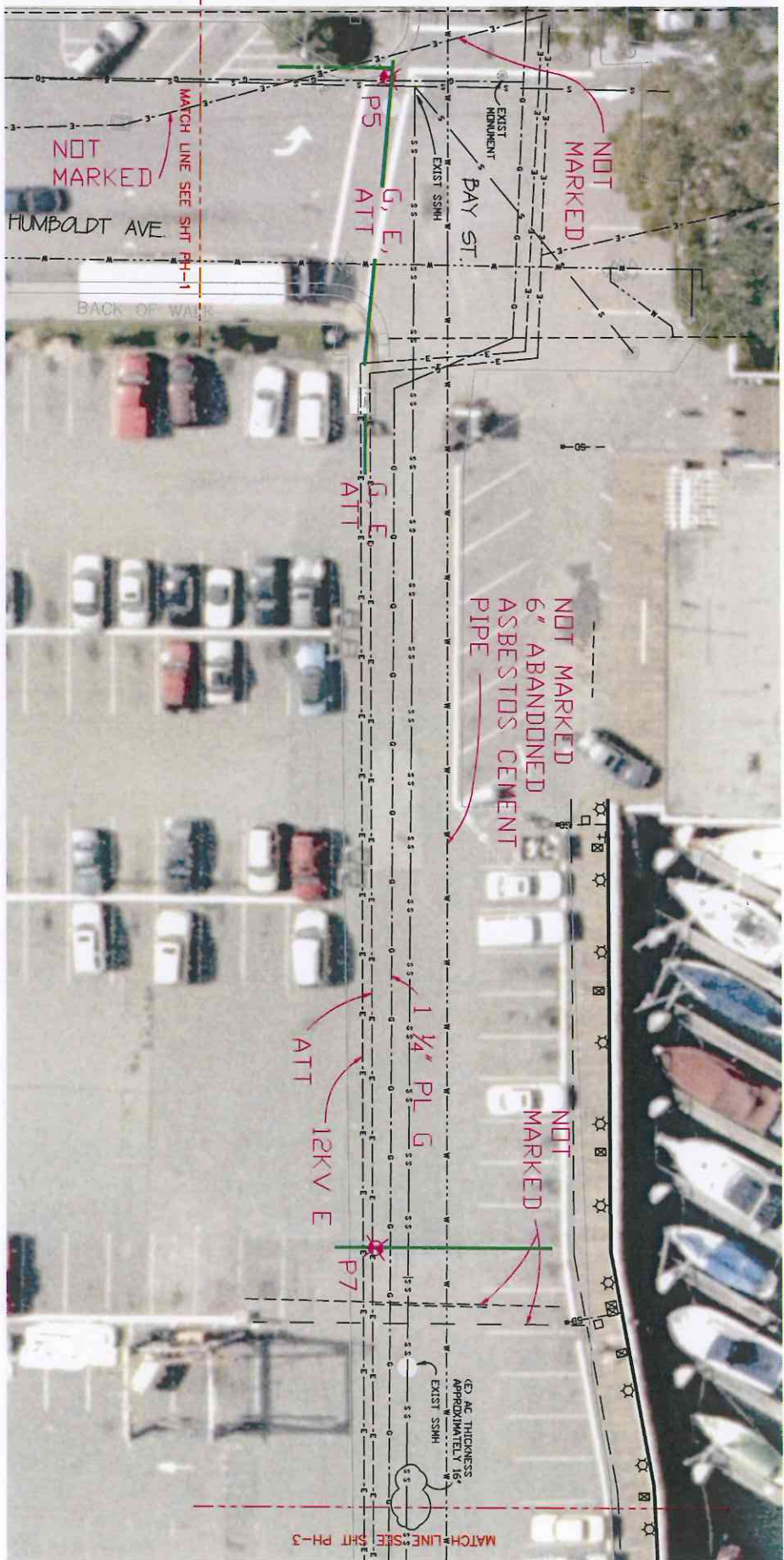
HUMBOLDT AVE - BAY ST - SPANNAKER POINT

NO.	DESCRIPTION OF WORK	BY	DATE	REVISION	DATE	SCALE	AS ENTERED	DATE	DATE	SHEET
1	DESIGN AND DRAWING									1
2	CHECKED									1
3	APPROVED									1
4	REVISION									1

PH-1

1" = 10'  
 0 10 20  
 MATCH LINE SEE SH-2  
 HUMBOLDT AVE  
 BAY ST  
 BACK OF WAREHOUSE





CITY OF SAUSALITO  
DEPARTMENT OF PUBLIC WORKS

NO.	DESCRIPTION OF WORK	BY	DATE

POT-Holing PROJECT  
HUMBOLDT AVE - BAY ST - SPANNAGER POINT

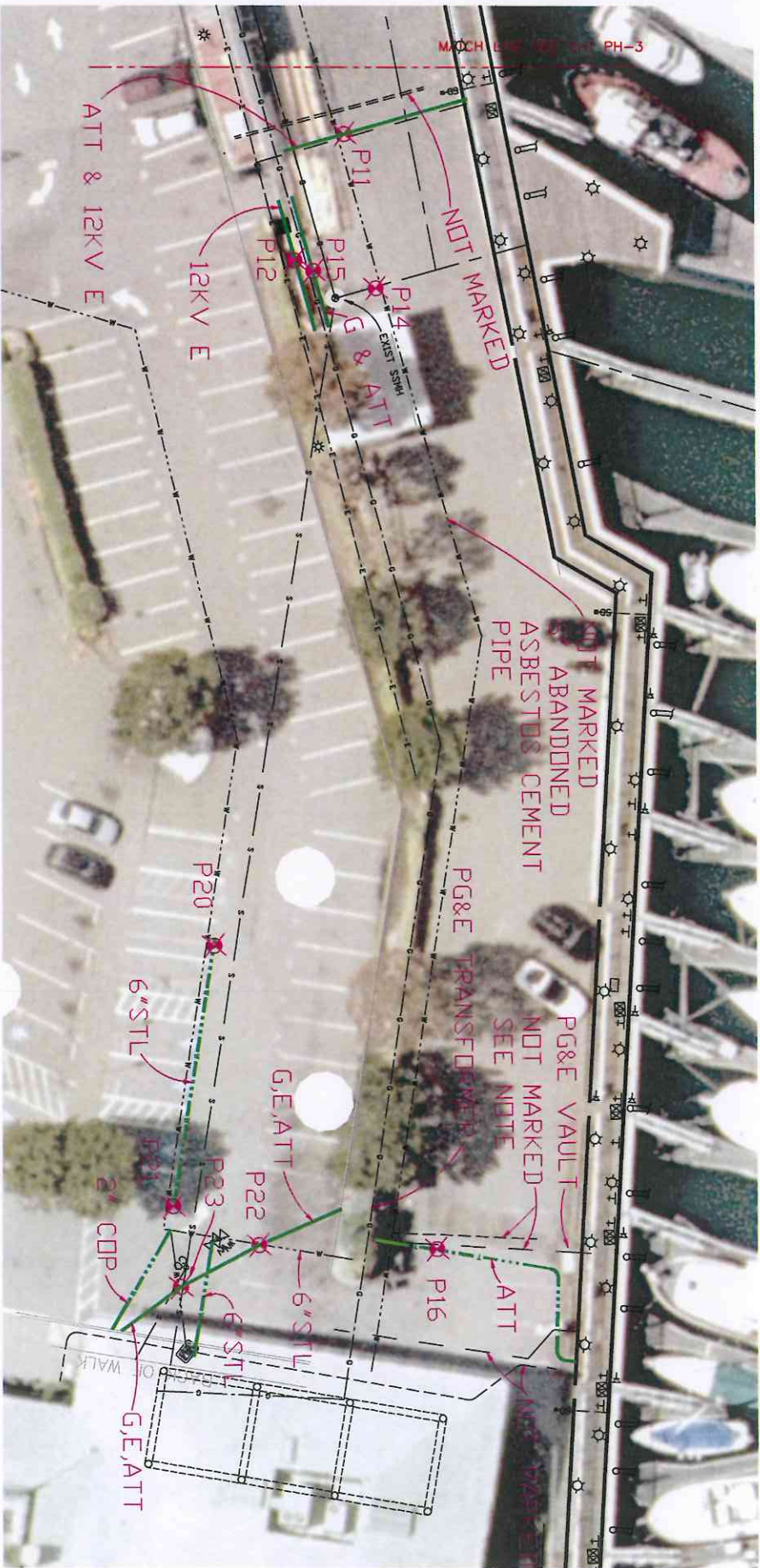
WARNING  
IF THIS BAR DOES NOT LOCKING IN NOT TO SCALE

PH-2

DESIGN AND CHECKED	SCALE	AS NOTED	DATE	DATE	SHEET







NOTE:  
 PER TELEPHONE CONVERSATION WITH PG&E  
 REPRESENTATIVE, THE EXISTING  
 PG&E ELECTRICAL LINE CONNECTING THE EXISTING  
 TRANSFORMER WITH THE EXISTING VAULT



CITY OF SAUSALITO  
 DEPARTMENT OF PUBLIC WORKS

NO.	DESCRIPTION OF REVISION	BY	DATE

POT-HOLING PROJECT  
 HUMBOLDT AVE - BAY ST - SPANWAGER POINT

NO.	DATE	BY	AS NOTED	DATE	DATE	REVISION

PH-4

DESIGN AND SCALE AS NOTED DATE 1/27/11 SHEET 4 OF 4

