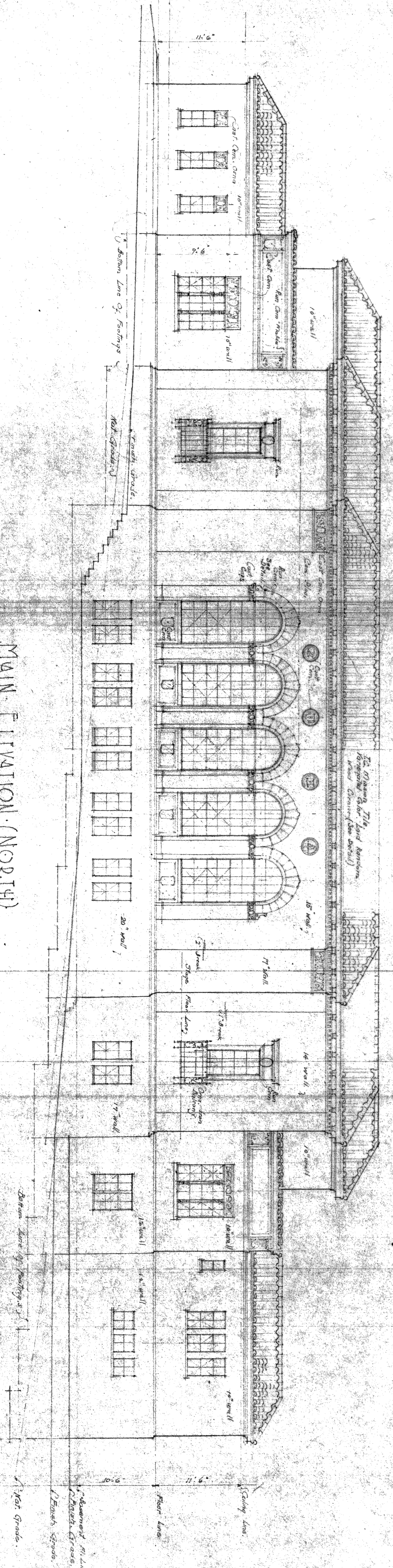


SOUTH ELEVATION

Scale 1/8" = 1'-0"



MAIN ELEVATION (NORTH)

Scale 1/8" = 1'-0"

CENTRAL SCHOOL SAUSALITO SCHOOL DISTRICT
 SAUSALITO MARIN COUNTY CALIF.

NORMAN R. COULTER,
 ARCHITECT
 MARKET BUILDING, 46 KALAMITY ST.
 SAN FRANCISCO, CALIF.
 DRAWING May 20th 1926

5