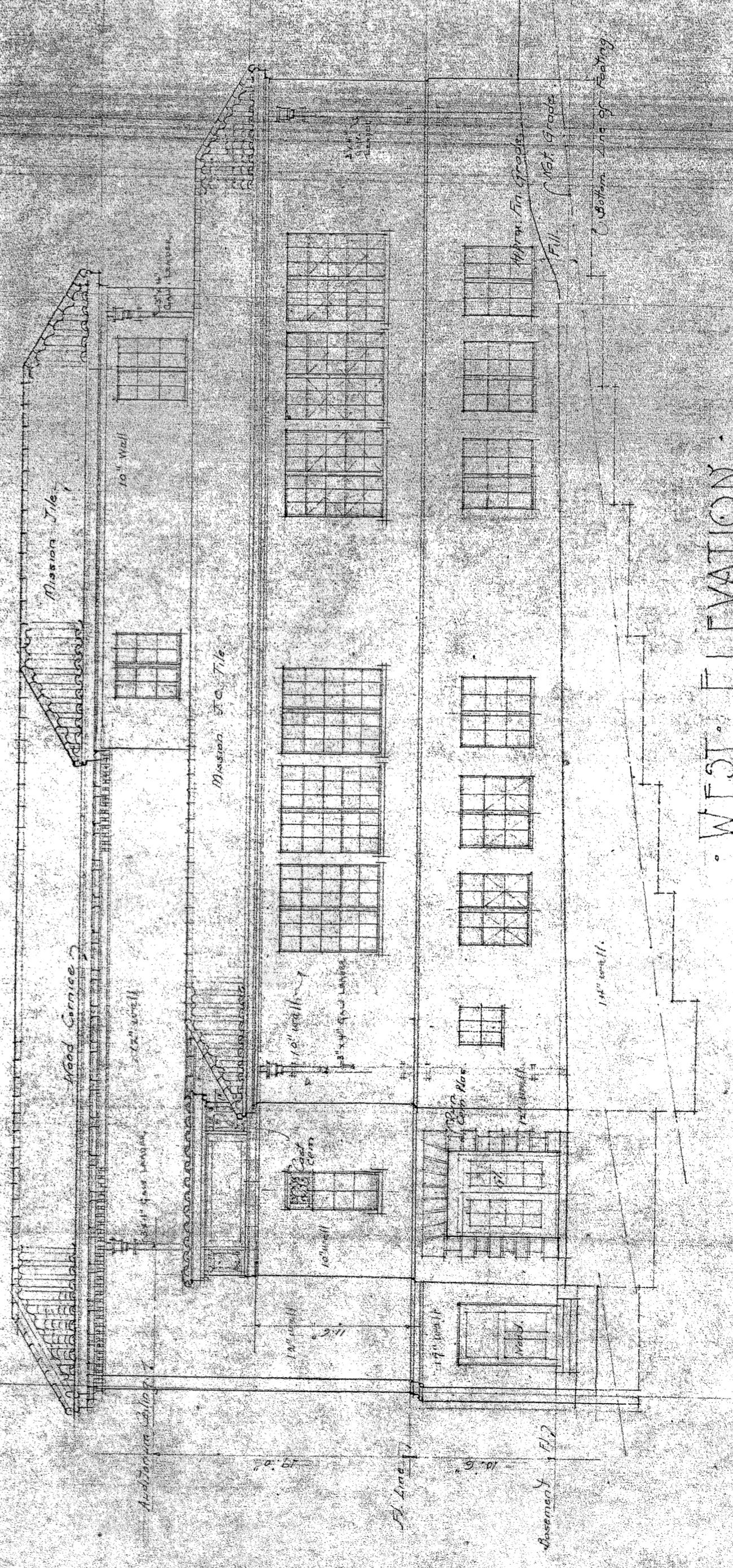
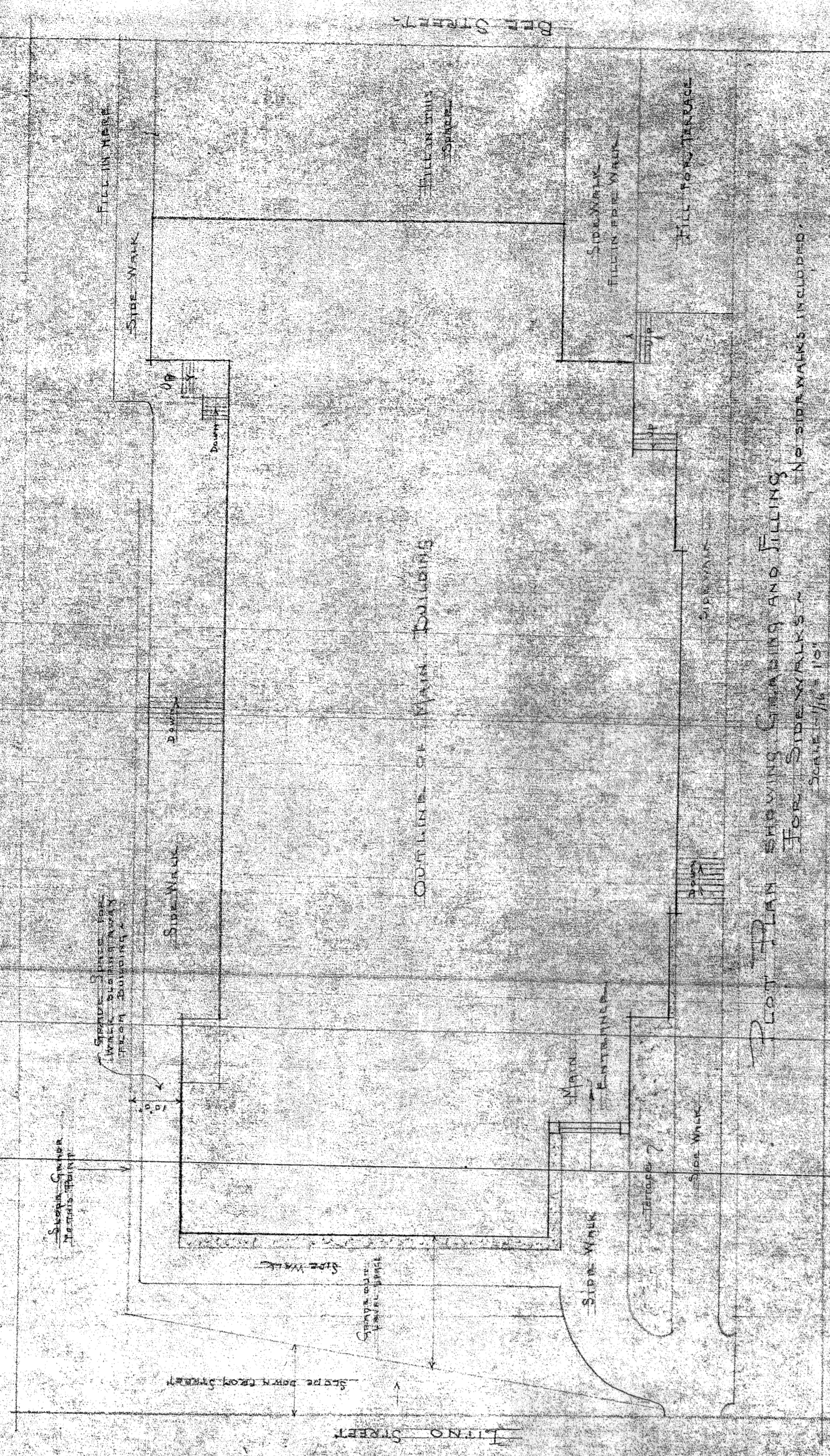


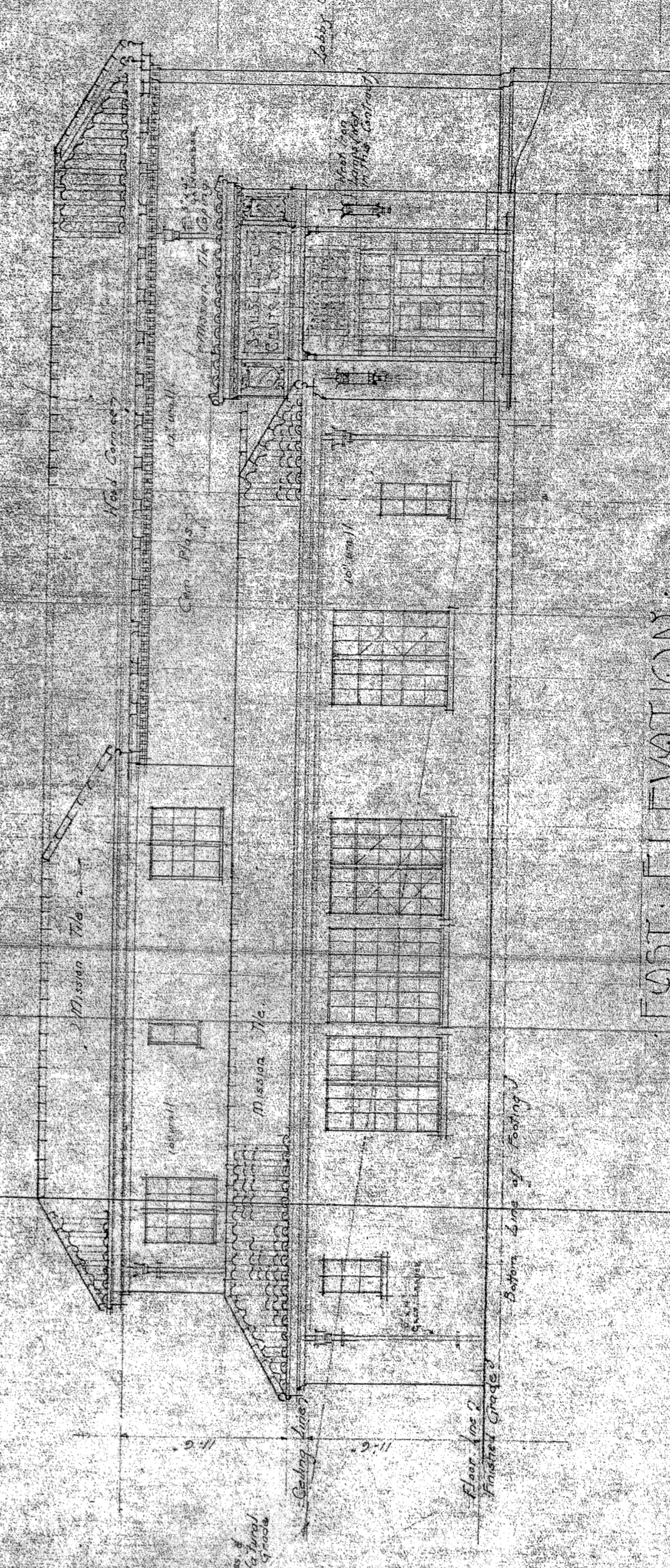
NORMAN R. COULTER,
 ARCHITECT
 MARKET BUILDING, 46 (CARRY) ST.
 SAN FRANCISCO, CAL.

Drawn May 20th 1926
 Revised

6



WEST ELEVATION
 SCALE 1/8" = 1'-0"



EAST ELEVATION
 SCALE 1/8" = 1'-0"

CENTRAL SCHOOL - Sausalito School District
 SAUSALITO, MARIN COUNTY, CALIF.