

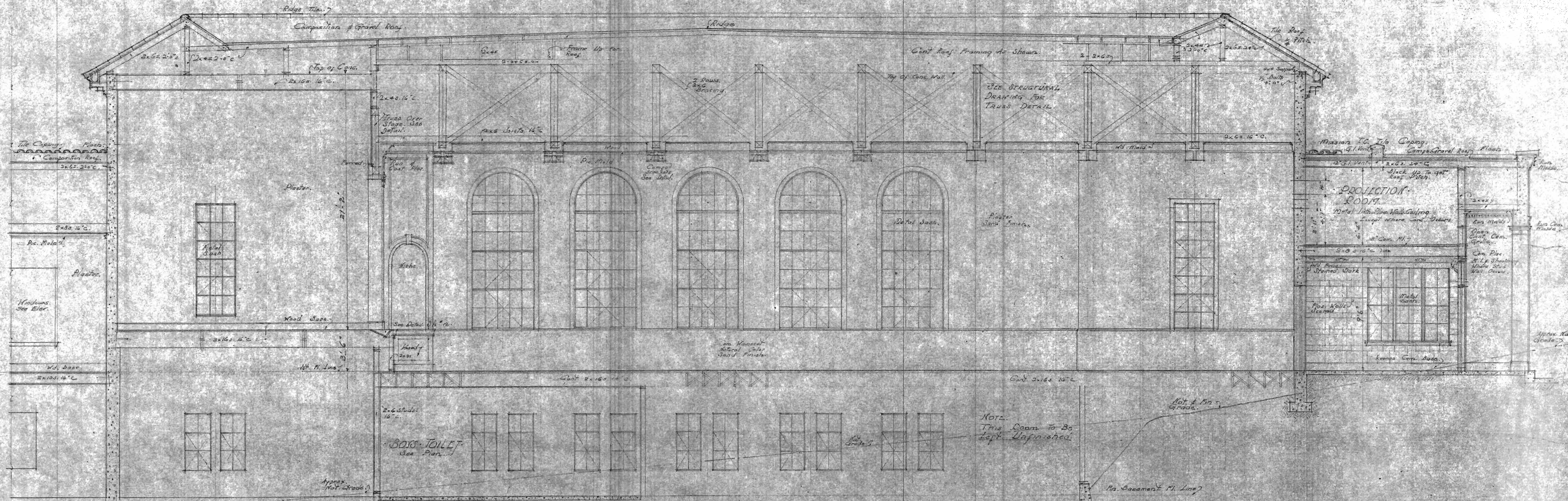
TOWARDS MAIN ENTRANCE

TOWARDS CORRIDOR

TOWARDS AUDITORIUM

LOBBY ELEVATIONS

SCALE 1/2" = 1'-0"



LONGITUDINAL SECTION LINE BB

SCALE 1/2" = 1'-0"

CENTRAL SCHOOL - SAUSALITO SCHOOL DISTRICT  
 SAUSALITO, MARIN COUNTY, CALIF.

NORMAN R. COULTER,  
 ARCHITECT  
 MASKEY BUILDING, 48 Kearny St.  
 SAN FRANCISCO, CALIF.

Drawn MAY 20th 1926

7